



MITCHELL 31 MKII

BROKER'S COMMENTS

If you are looking for a boat to cruise along the inland waterways... or are you looking for a boat to explore the big water... This Mitchell MK II "Blue Marlin" is synonymous with adventure & water sports. Come and meet this powerhouse in our covered sales harbor in Sneek.

Henk de Vries

SPECIFICATIONS

Dimensions	9.45 x 3.35 x 0.79 (m)	Builder	J.S. Mouldings Essex
Built	1993	Cabins	1
Material	GRP	Berths	2
Engine(s)	1 x Volvo Penta TAMD 71A diesel	Hp/Kw	380.00 (hp), 279.30 (kw)
Asking price	sold (VAT)	Lying	elsewhere / Not at sales office

CONTACT

Sales office	De Valk Sneek	Telephone	+31 (0)515 42 80 30
Address	Zwolsmanweg 7 8606 KC Sneek NL	E-mail	sneek@devalk.nl

DISCLAIMER

These particulars are given in good faith as supplied but cannot be guaranteed.



GENERAL

Model	MITCHELL 31 MKII
Type	motor yacht
LOA (m)	9,45
Beam (m)	3,35
Draft (m)	0,79
Air draft (m)	2,50
Headroom (m)	1,95
Year built	1993
Builder	J.S. Mouldings Essex
Country	Great Britain
Designer	Alan Hill
Displacement (t)	4
Hull material	GRP
Hull colour	blue
Hull shape	round-bilged
Keel type	long keel
Superstructure material	GRP
Rubbing strake	rubber
Deck material	GRP
Deck finish	TBS non-skid profile mats
Superstructure deck finish	non-skid moulded in
Cockpit deck finish	teak
Dorades	1x
Window frame	aluminium
Window material	glass
Deckhatch	1x
Portholes	aluminium
Mast can be lowered	electric
Fuel tank (litre)	stainless steel 450 ltr
Level indicator (fuel tank)	yes



Freshwater tank (litre)	stainless steel 80 ltr
Wheel steering	hydraulic
Inside helm position	yes

ACCOMMODATION

Cabins	1
Berths	2
Interior	cherry
Floor	teak and holly
Open cockpit	yes
Aft deck	yes
Doghouse	yes
Headroom saloon (m)	1.91 m.
Heating	diesel ducted hot air Eberspacher
Opening door to cockpit	yes
Galley	yes
Countertop	plastic
Sink	stainless steel
Cooker	Dometic Origo 3000 2-pits Gell
Fridge	with freezer Waeco 50 ltr
Freezer	yes
Hot water system	220V + engine Boiler
Water pressure system	electrical
Owners cabin	v-bed
Bed length (m)	2.00 m.
Toilet	shared
Toilet system	manual
Wash basin	at the toilet

MACHINERY

No of engines	1
---------------	---



MITCHELL 31 MKII

Make	Volvo Penta
Type	TAMD 71A
HP	380,00
kW	279,30
Fuel	diesel
Maximum speed (kn)	20
Engine hours	4000
Engine cooling system	freshwater heat exchanger
Drive	shaft
Shaft seal	yes
Engine controls	bowden cable
Gearbox	hydraulic
Bowthruster	electric
Exhaust	watercooled
Propeller type	fixed
Propeller blades	4 x
Propeller shaft material	stainless steel
Shaft lubrication	water
Electric bilge pump	yes
Electrical installation	24/220 volt
Start battery	2 x 105 Amp
Service battery	2 x 180 Amp
Battery monitor	Mastervolt
Diode battery combiners	yes
Shorepower	with cable
Trimtabs	Volvo QL

NAVIGATION

Depth sounder/log	AdvanSea C.56
Fish finder	AdvanSea C.56
VHF	Sailor RT144B



Rudder angle indicator	VDO
Plotter/GPS	AdvanSea C.56
Searchlight	Jabsco 60020-0024

EQUIPMENT

Bathing platform	yes
Boarding ladder	stainless steel
Anchor	CQR Plough
Windlass	electrical Remote control
Sea railing	stainless steel
Grab rail (superstructure)	stainless steel
Wiper	3x ROCA
Horn	electric
Radar reflector	Echomax
Fenders	yes
Mooring lines	yes
Fire extinguisher	yes



MITCHELL 31 MKII



MITCHELL 31 MKII



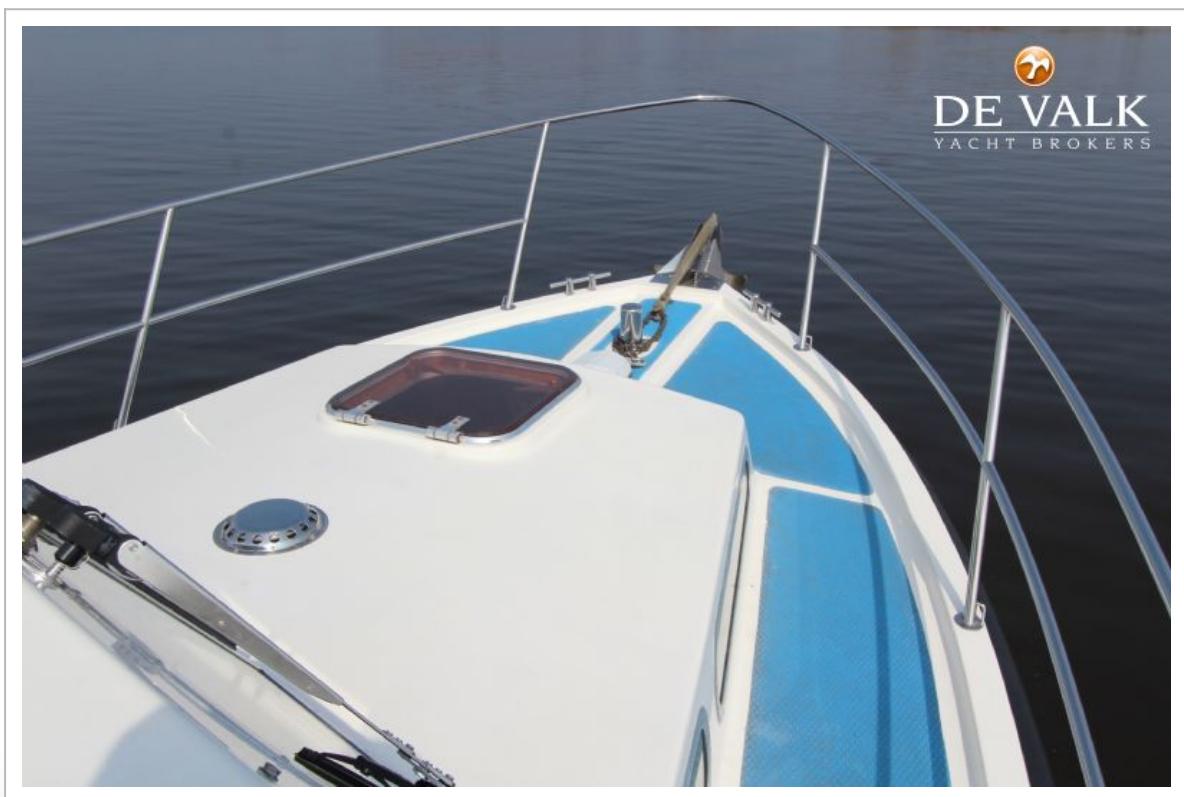
MITCHELL 31 MKII



MITCHELL 31 MKII



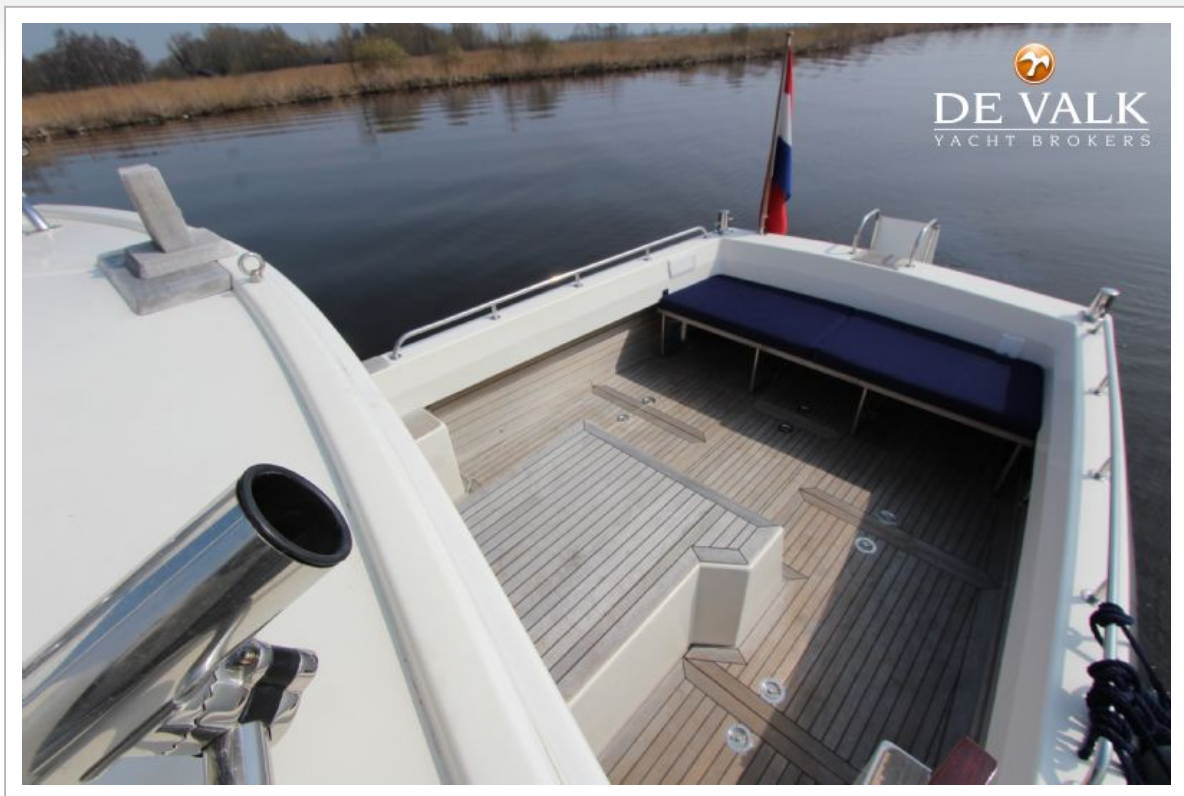
MITCHELL 31 MKII



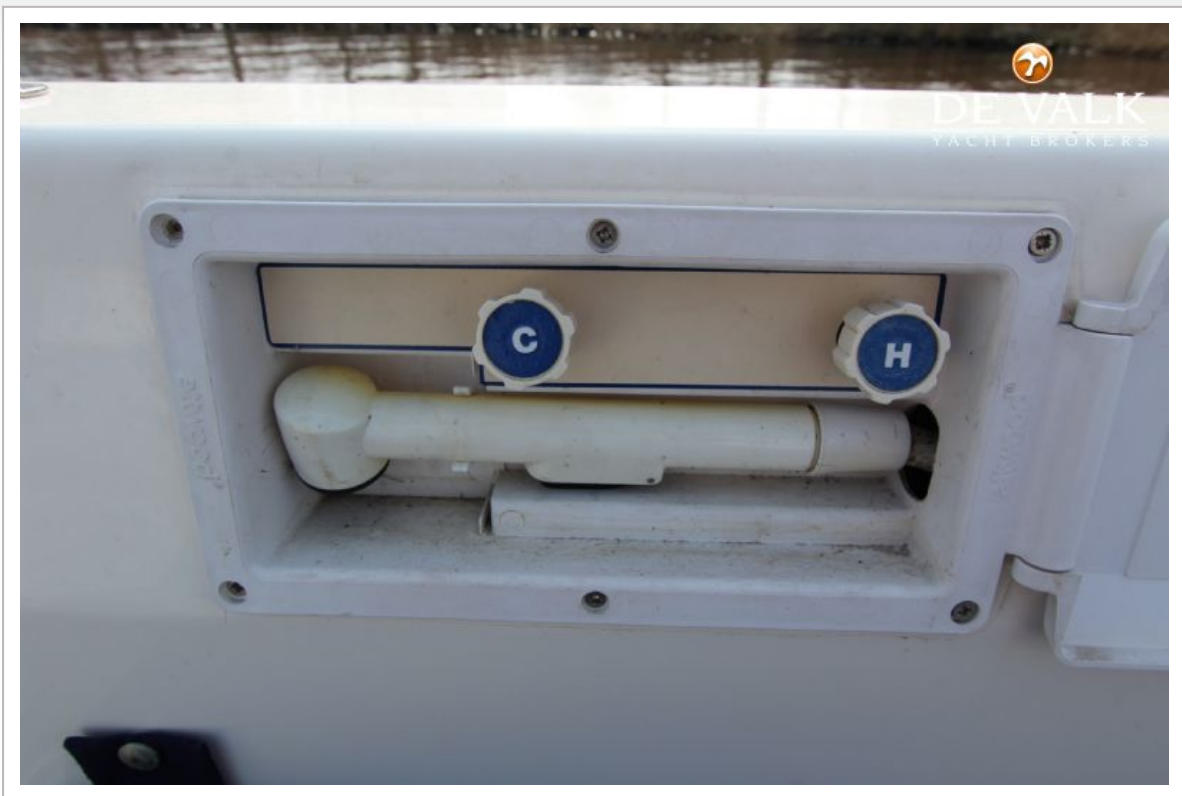
MITCHELL 31 MKII



MITCHELL 31 MKII



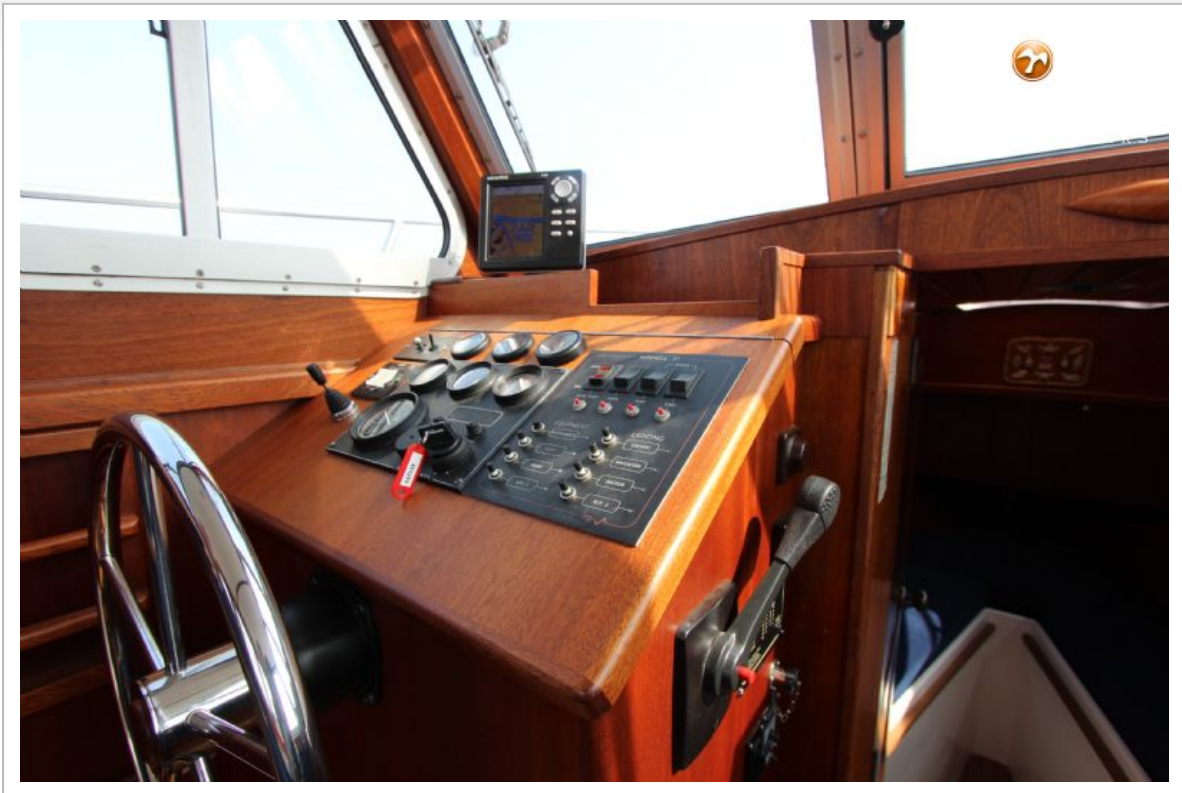
MITCHELL 31 MKII



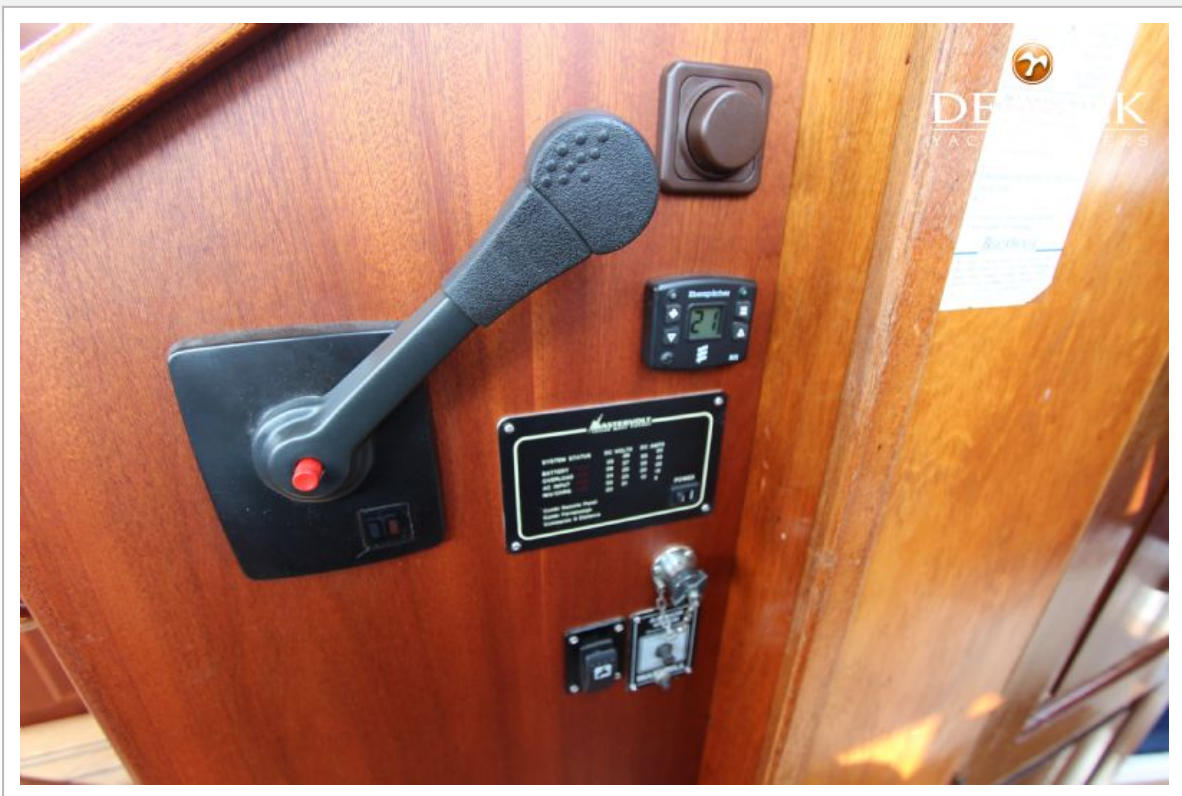
MITCHELL 31 MKII



MITCHELL 31 MKII



MITCHELL 31 MKII



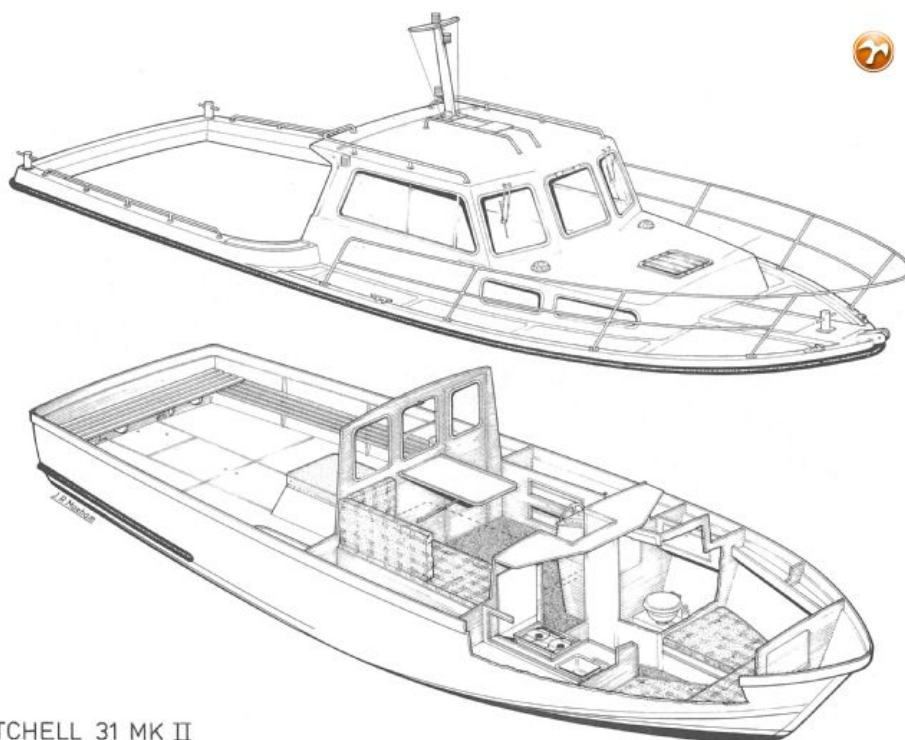
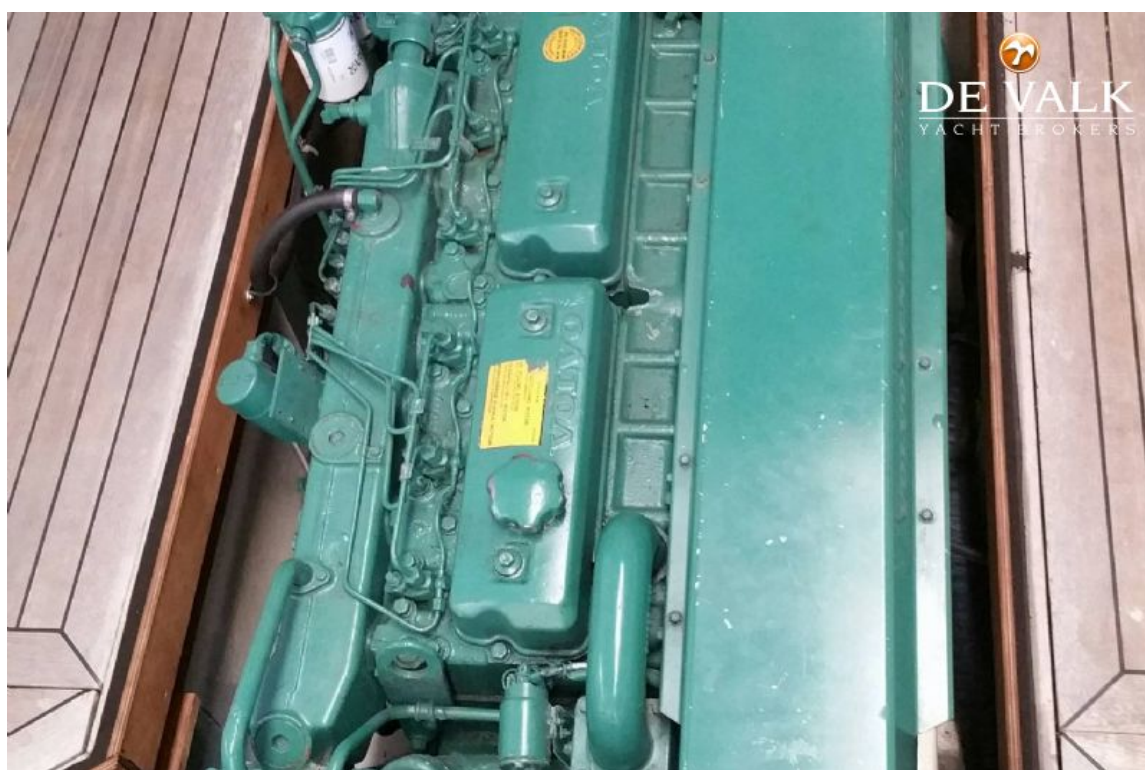
MITCHELL 31 MKII



MITCHELL 31 MKII



MITCHELL 31 MKII



MITCHELL 31 MK II

