



DOGGERSBANK 1780

BROKER'S COMMENTS

Doggersbank 1780 "Trewes" has been build in aluminum by Bloemsma & van Breemen, designed by Vripack Yacht Design. The interior has been finished by Ruiters Quality Interiors. All high quality Dutch yacht builders. The high standard in terms of finish and equipment shows the experience of her owner. Equipped with a Caterpillar main engine, 16 kVA generator, hydraulic bow- and sternthruster, stabilizers, Kabola central heating, air conditioning, professional navigation equipment. She is ready to go and awaiting her new owner. Hull sprayed 2022. Come and inspect her in our showroom in Sneek.

Pieter Bosma

SPECIFICATIONS

Dimensions	17.87 x 4.96 x 1.35 (m)	Builder	Bloemsma & van Breemen
Built	2000	Cabins	3
Material	Aluminium	Berths	6
Engine(s)	1 x Caterpillar 3116 DITA -205 diesel	Hp/Kw	205.00 (hp), 150.68 (kw)
Asking price	sold (VAT)	Lying	at sales office

CONTACT

Sales office	De Valk Sneek	Telephone	+31 (0)515 42 80 30
Address	Zwolsmanweg 7 8606 KC Sneek NL	E-mail	sneek@devalk.nl

DISCLAIMER

These particulars are given in good faith as supplied but cannot be guaranteed.



GENERAL

Model	DOGGERSBANK 1780
Type	motor yacht
LOA (m)	17,87
LWL (m)	15,92
Beam (m)	4,96
Draft (m)	1,35
Air draft (m)	10,00
Air draft min (m)	4,75
Headroom (m)	2,00
Year built	2000
Builder	Bloemsma & van Breemen
Country	The Netherlands
Designer	Vripack
Displacement (t)	33,5
CE norm	A
Hull material	aluminium
Hull colour	blue
Hull thickness (mm)	8 mm & 6 mm
Hull shape	round-bilged
Keel type	long keel
Bilge keels	yes
Superstructure material	aluminium
Superstructure (mm)	5 mm
Deck plate thickness (mm)	5 mm
Rubbing strake	stainless steel
Deck material	aluminium
Deck finish	teak
Superstructure deck finish	paint
Antifouling (year)	2022
Dorades	yes



Window frame	aluminium
Window material	double glazing Gebo
Deckhatch	Bomar
Portholes	stainless steel
Insulation	foam
Mast can be lowered	hydraulic
Steadying sail with mast	yes
Fuel tank (litre)	aluminium 4 tanks total 4.600 ltr
Level indicator (fuel tank)	Tanktender
Freshwater tank (litre)	aluminium 1x 841 + 1x 939 Ltr
Level indicator (freshwater)	Tanktender
Blackwater tank (litre)	aluminium 348 Ltr
Level indicator (blackwater)	Tanktender
Blackwater tank extraction	deck extraction + pump
Greywater tank (litre)	aluminium 1x 348 + 1x 348 Ltr
Level indicator (greywater)	Tanktender
Wheel steering	powersteer
Inside helm position	yes
More info on paintwork	Hull sprayed with Alexseal januari 2022

ACCOMMODATION

Cabins	3
Berths	6
Interior	cherry
Floor	teak and holly
Aft deck	yes
Pilot house	yes
Pilot house/deck saloon	yes
Saloon	yes
Headroom saloon (m)	2,00
Heating	central heating Kabola B17



Air-conditioning	reverse cycle airco Condaria
Chart table	yes
Aft Cabin	yes
Dinette	yes
Opening door to aft deck	yes
Galley	yes
Countertop	granite
Sink	stainless steel
Cooker	ceramic Miele 4 burner
Extractor	Miele
Microwave/oven combi	Miele
Fridge	Miele
Freezer	3 drawers Miele
Hot water system	on central heating
Water pressure system	electrical
Dishwasher	Miele
Owners cabin	twin single
Bed length (m)	2,10
Wardrobe	hanging/drawers/shelves
Bathroom	en suite
Toilet	en suite
Toilet system	electric
Wash basin	in the bathroom
Shower	en suite
Guest cabin 1	French bed
Bed length (m)	2,00
Wardrobe	drawers and shelves
Bathroom	shared
Guest cabin 2	bunk bed
Bed length (m)	2,10
Wardrobe	drawers and shelves
Bathroom	shared



Bathroom	yes
Toilet	
Toilet system	electric
Wash basin	in the bathroom
Shower	
Washing machine/dryer combi	Miele Novotronic WT945
Extra info	hot water tap

MACHINERY

No of engines	1
Make	Caterpillar
Type	3116 DITA -205
HP	205
kW	150,68
Fuel	diesel
Year installed	2000
Maximum speed (kn)	9,6
Cruising speed (kn)	8,5
Consumption (l/hr)	12,5
Engine hours	1381
Engine cooling system	freshwater heat exchanger
Drive	shaft
Shaft seal	yes
Engine controls	electrical Micro Commander
Gearbox	hydraulic Twindisc MG5050 3.00:1
Bowthruster	hydraulic 15
Sternthruster	hydraulic 15
Exhaust	watercooled
Thrust bearing	yes
Propeller type	fixed
Propeller blades	4



Propeller shaft material	stainless steel
Shaft lubrication	water
Manual bilge pump	yes
Electric bilge pump	yes
Bilge alarm	yes
Electrical installation	12-24 220-110
Generator	silent separator Northern Light 16 Kva.
Running hours generator	1509
Batteries	yes
Start battery	2x 200Ah.
Service battery	8x 200 Ah. Gel 2015
Generator battery	2x 80 Amp.
Battery charger	Mastervolt Mass 24-50 2x, Mass 24-12 2x
Inverter	Mastervolt Sinus 24-2500
Diode battery combiners	yes
Shorepower	with cable
Insulation transformer	yes
Stabilizers	fin Koopnautic
Extra info	Attema hydraulic installation

NAVIGATION

Electric compass	Radio Zeeland Gyro Delta 345 and electric Delta 371
Depth sounder	yes
Log	yes
Windset	Raytheon
VHF	Sailor RT4822
Autopilot	Radio Zeeland Delta 371
Rudder angle indicator	Radio Zeeland Delta 500 rudder indicator and curve indicator
Radar	yes
Radar/GPS/plotter	Raymarine GS serie
Navtex	Navtex Nav4 navtex Plus



Electronis chart(s)	yes
AIS receiver	yes
AIS transponder	yes
Navigation lights	yes
Searchlight	yes

EQUIPMENT

Cockpit cushions	yes
Cockpit table	yes
Cockpit chairs	yes
Bathing platform	yes
Boarding ladder	stainless steel
Transom door	yes
Bow ladder	yes
Deck shower	yes
Anchor	Danforth
Anchor chain	90 mtr.
Windlass	hydraulic Mur
Deck wash	yes
Dinghy	rigid inflatable Novurana
Outboard	Yamaha 40 Ps
Davits	stainless steel Simpson
Davits controls	electrical
Sea railing	stainless steel With Teak
Grab rail (superstructure)	stainless steel
Railing side opening gates	yes
Life raft	container
Life raft (pers)	6
Last life raft survey	needs inspection
Lifejackets	yes
Danbuoy	yes

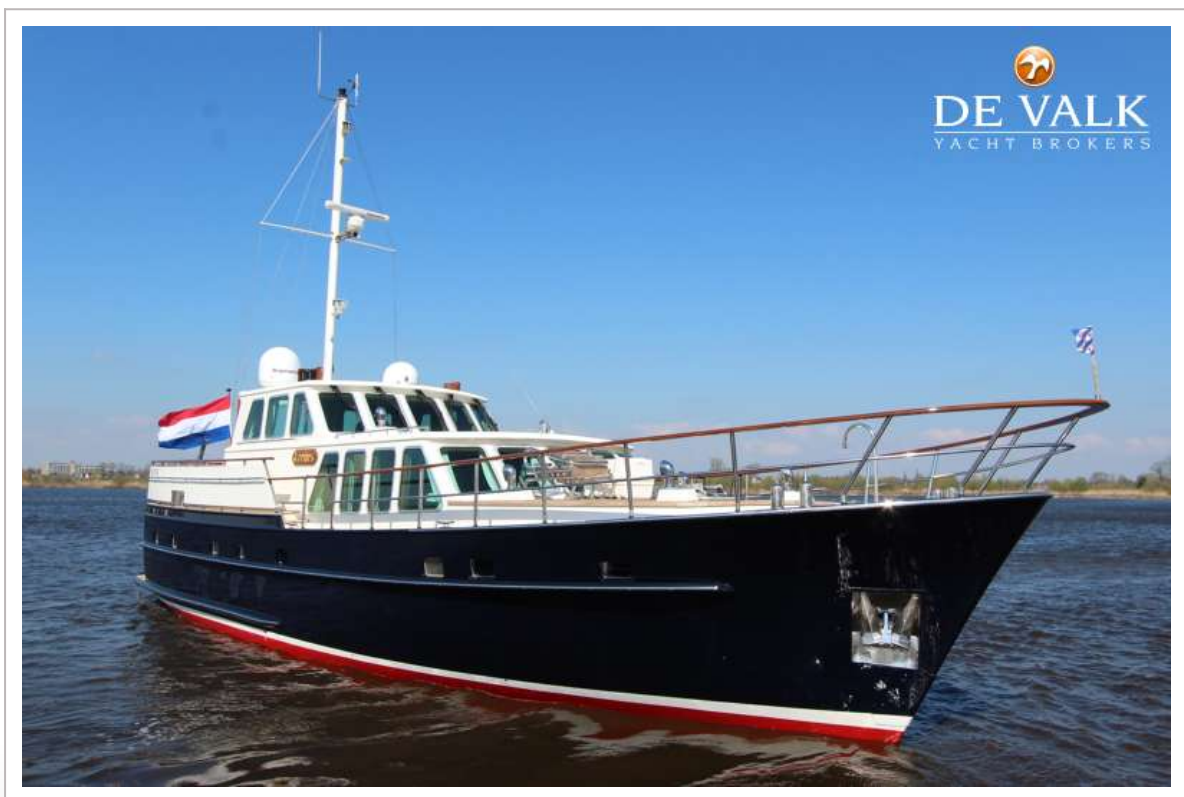


Wiper	5x with fresch waterspray
Horn	electric
Fenders	yes
Mooring lines	yes
Tools	yes
TV	Philips in salon and aftcabin
TV receiver	yes
Satellite	Raytheon Satelite
Radio-cd player	Sony in pilothouse, forecabin and aftcabin
DVD player	Philips
Speakers in salon	yes
Speakers in cabin	yes
Fire extinguisher	2019
Auto extinguisher system	Needs inspection
Extra info	CVO certified.

RIGGING

Rigging	
Brand mast	Proctor
Material mast	aluminium coated
Spreaders	yes
Mast lowering system	yes
Mainsail	steading sail
Stoway mast	yes





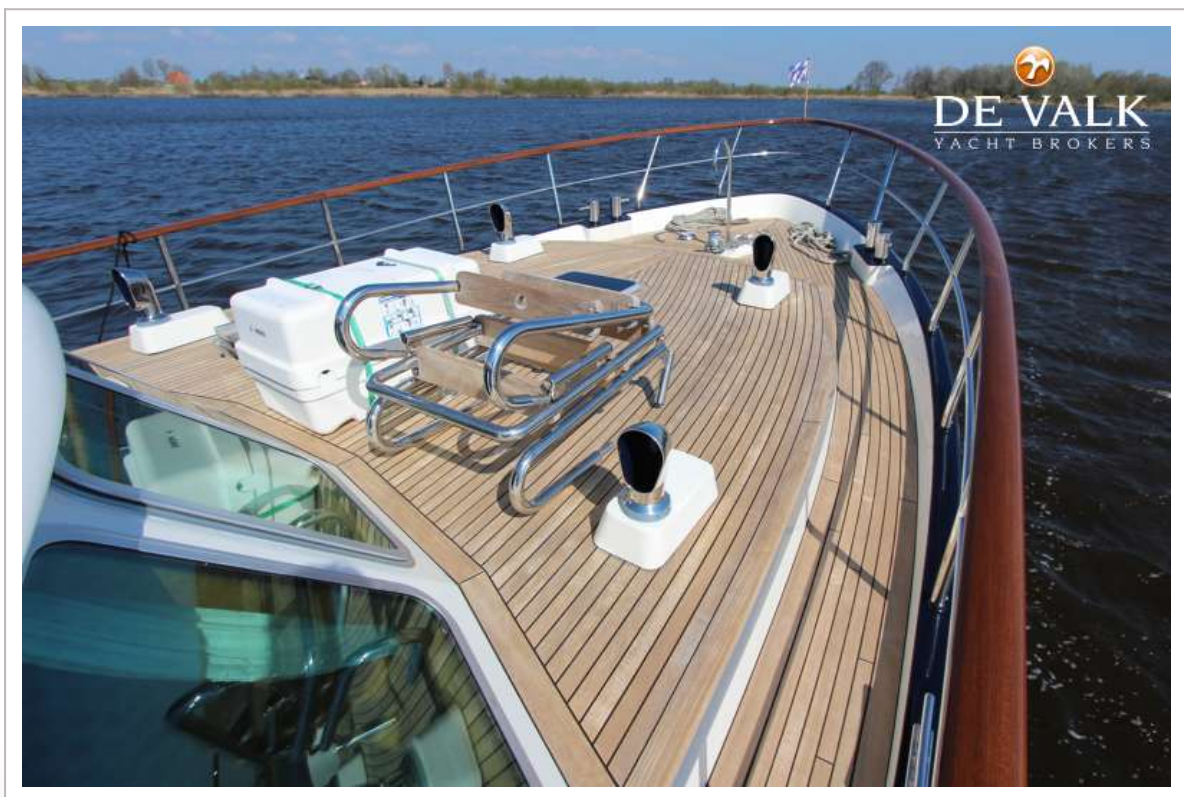
DOGGERSBANK 1780



DOGGERSBANK 1780

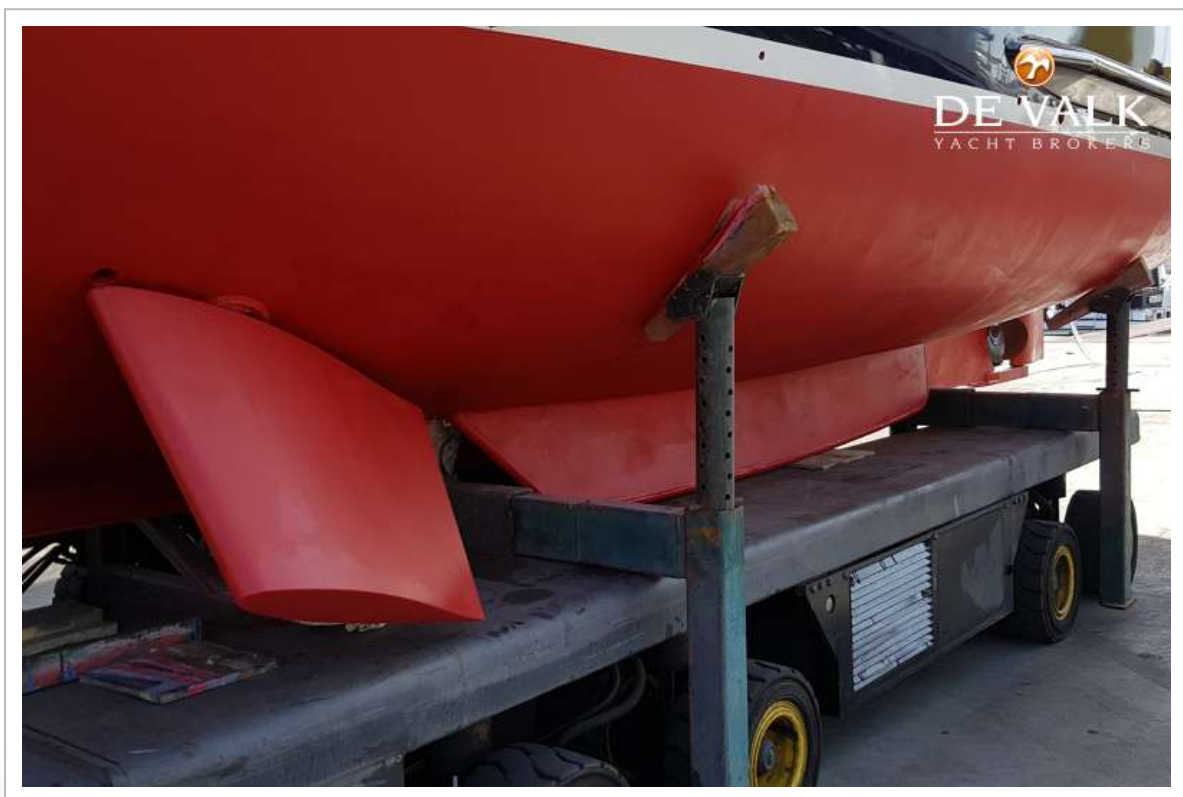
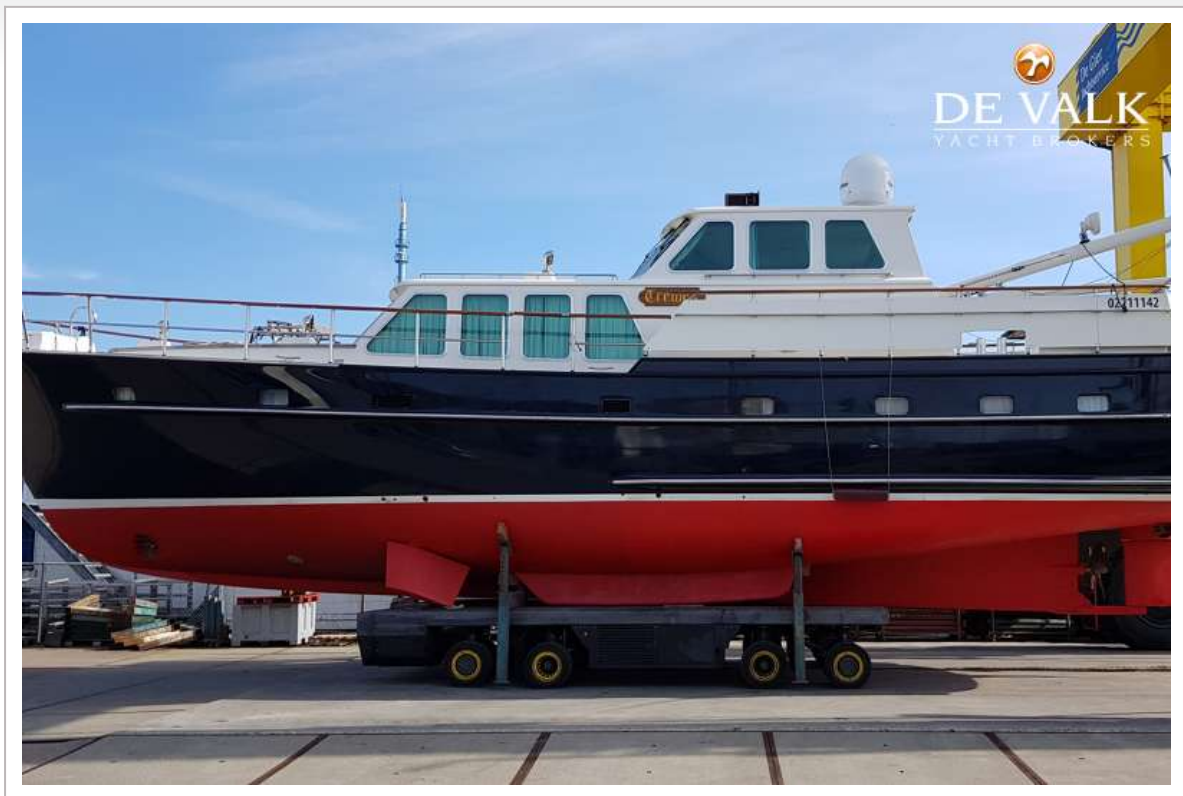


DOGGERSBANK 1780



DOGGERSBANK 1780

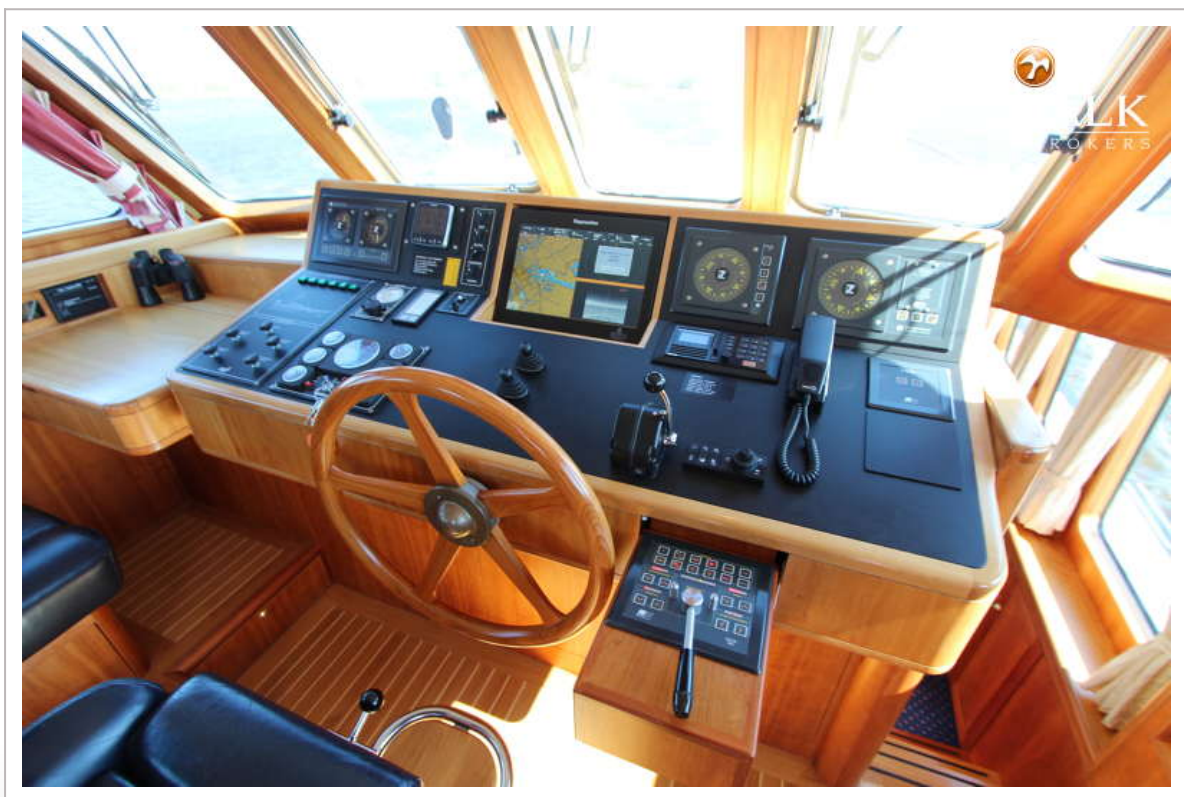




DOGGERSBANK 1780



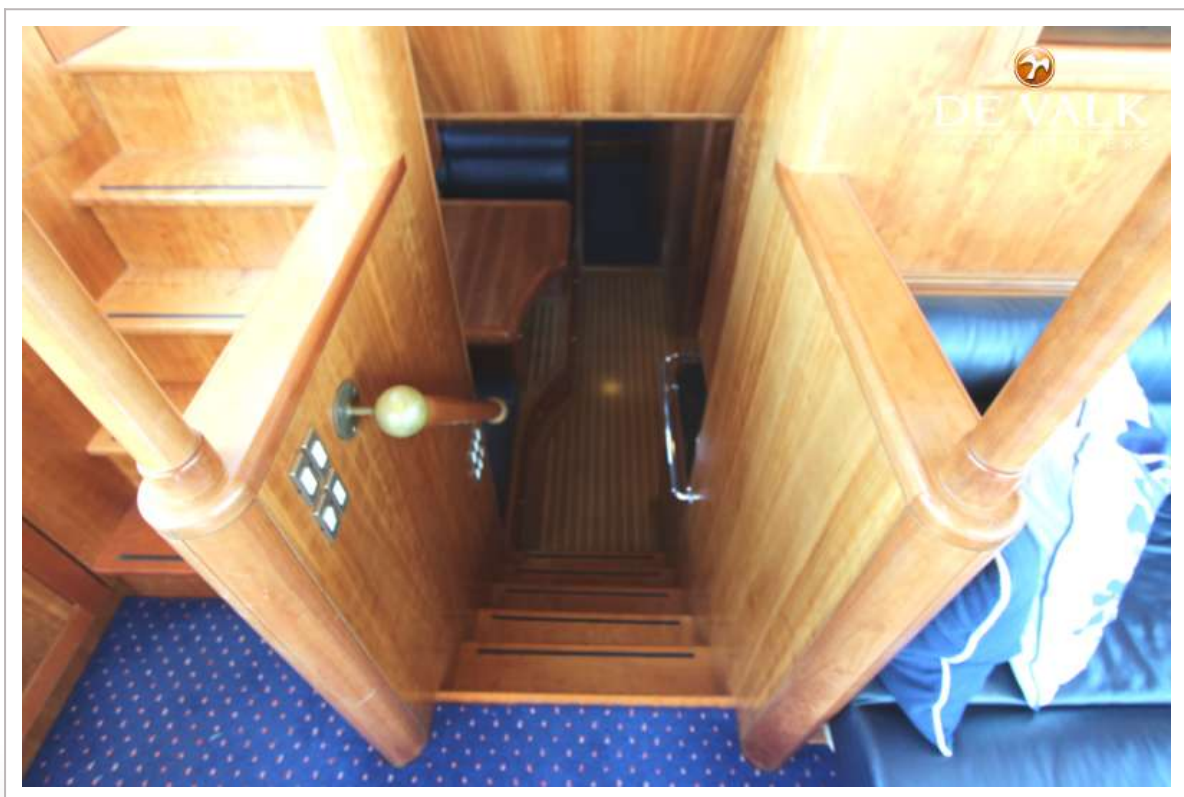
DOGGERSBANK 1780



DOGGERSBANK 1780



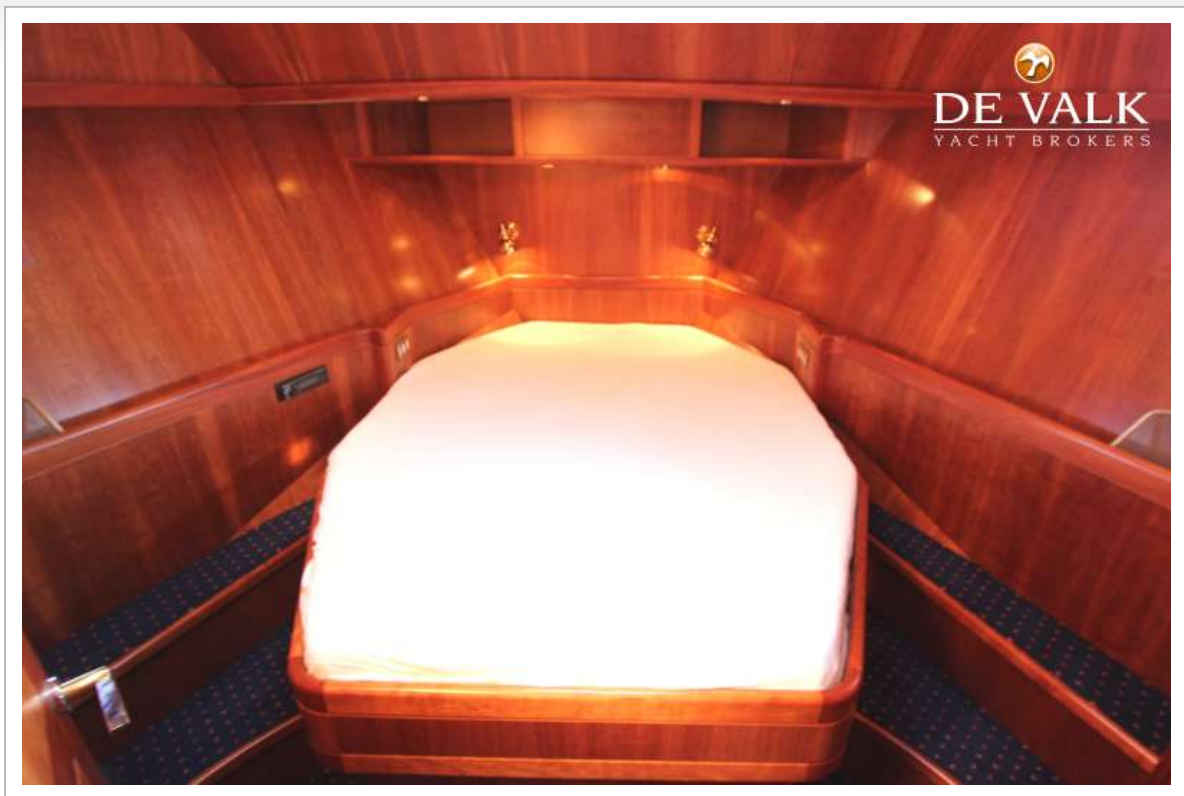
DOGGERSBANK 1780



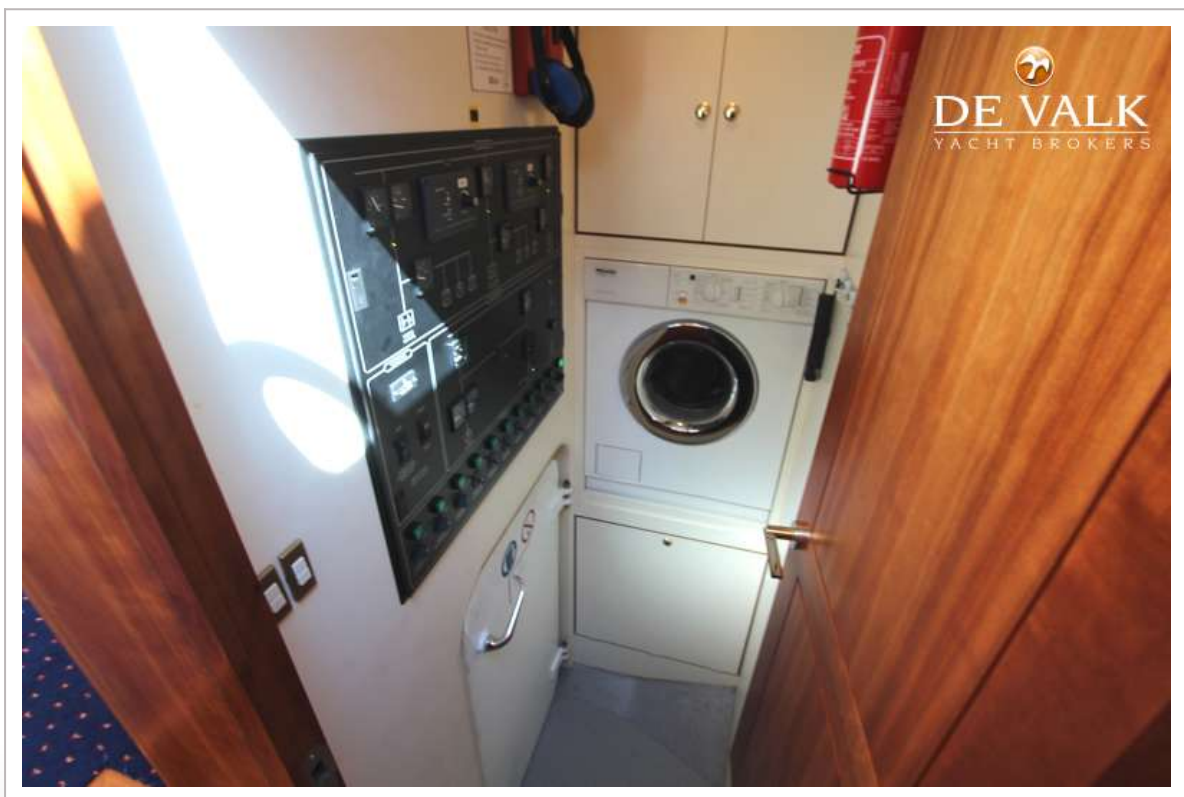
DOGGERSBANK 1780



DOGGERSBANK 1780



DOGGERSBANK 1780



DOGGERSBANK 1780









DOGGERSBANK 1780

