



SEAFARING 44 COUPÉ



SEAFARING 44 COUPÉ

BROKER'S COMMENTS

Seafaring 44 Coupe, a modern and contemporary motor yacht build in 2017 by Seafaring Yachts in Slovenia. we offer the version with three cabins, private shower and toilet room for the ownerscabin and a shared toilet room with washbowl for the guests cabins. It's easy maneuvering with the 180 HP Volvo Penta Diesel engine combined with the electric bow- and sternthruster. Comfortable onboard due Webasto heating and double glazed windows. Come over to our covered sale marina in Sneek to view this nearly new Seafaring. Delivery without VAT possible. Asking price has VAT included.

Arne Doodeman

SPECIFICATIONS

Dimensions	14.39 x 4.25 x 0.80 (m)	Builder	Seafaring Yachts
Built	2017	Cabins	3
Material	GRP	Berths	6
Engine(s)	1 x Volvo Penta D4-180-I-F diesel	Hp/Kw	180.00 (hp), 132.30 (kw)
Asking price	sold (VAT)	Lying	at sales office

CONTACT

Sales office	De Valk Sneek	Telephone	+31 (0)515 42 80 30
Address	Zwolsmanweg 7 8606 KC Sneek NL	E-mail	sneek@devalk.nl

DISCLAIMER

These particulars are given in good faith as supplied but cannot be guaranteed.



SEAFARING 44 COUPÉ

GENERAL

Model	SEAFARING 44 COUPÉ
Type	motor yacht
LOA (m)	14,39
LWL (m)	11,95
Beam (m)	4,25
Draft (m)	0,80
Year built	2017
Launched	August 2017
Builder	Seafaring Yachts
Country	Slovenia
Designer	Seafaring Yachts
Displacement (t)	11
CE norm	B
Hull material	GRP
Hull colour	white
Hull shape	deep-V
Keel type	
Superstructure material	GRP
Rubbing strake	rubber
Deck material	yes
Deck finish	synthetic teak Esthec
Cockpit deck finish	synthetic teak Esthec
Window material	double glazing
Deckhatch	3x
Fuel tank (litre)	stainless steel 1000L (2x500L)
Freshwater tank (litre)	550L
Blackwater tank (litre)	yes
Wheel steering	hydraulic
Inside helm position	yes



SEAFARING 44 COUPÉ

ACCOMMODATION

Cabins	3
Berths	6
Interior	oak Alpi Lignum
Saloon	yes
Heating	diesel ducted hot air Webasto airtop Evo 55
Chart table	yes
Sliding door to cockpit	yes
Galley	yes
Countertop	corian
Sink	stainless steel
Cooker	calor gas 4 burner
Fridge	yes
Hot water system	220V + engine 60L Quick nautic boiler
Water pressure system	yes
Owners cabin	French bed
Wardrobe	yes
Bathroom	en suite
Toilet	Dometic
Toilet system	electric
Wash basin	yes
Shower	en suite
Guest cabin 1	double bed
Wardrobe	yes
Toilet	shared Dometic
Toilet system	electric
Wash basin	at the toilet
Guest cabin 2	twin single
Wardrobe	yes

MACHINERY



SEAFARING 44 COUPÉ

No of engines	1
Make	Volvo Penta
Type	D4-180-I-F
HP	180
kW	132,30
Fuel	diesel
Engine hours	188
Engine cooling system	freshwater heat exchanger
Drive	shaft
Engine controls	electrical Volvo Penta
Gearbox	hydraulic Volvo Penta HS63AE-G
Bowthruster	electric Quick
Sternthruster	electric Quick
Exhaust	watercooled
Thrust bearing	Aquadrive
Propeller type	fixed
Propeller blades	4 bladed
Propeller shaft material	stainless steel
Shaft lubrication	water
Manual bilge pump	yes
Electric bilge pump	yes
Batteries	yes
Battery charger	Victron Centaur 12/80
Shorepower	with cable

NAVIGATION

Compass	Ritchie liquid compass
VHF	Garmin GHS 10i
Plotter/GPS	Garmin GPS map
Navigation lights	yes



SEAFARING 44 COUPÉ

EQUIPMENT

Cockpit cushions	yes
Bathing platform	yes
Boarding ladder	stainless steel
Transom door	2x
Deck shower	yes
Anchor	20 KG stainless steel
Anchor chain	8mm, 50 meter
Windlass	electrical Quick
Sea railing	stainless steel
Wiper	3x
Horn	yes
Fenders	yes
Mooring lines	yes
Radio	Fusion MS-RA70N
Fire extinguisher	yes
Extinguisher in engine room	yes



SEAFARING 44 COUPÉ



SEAFARING 44 COUPÉ



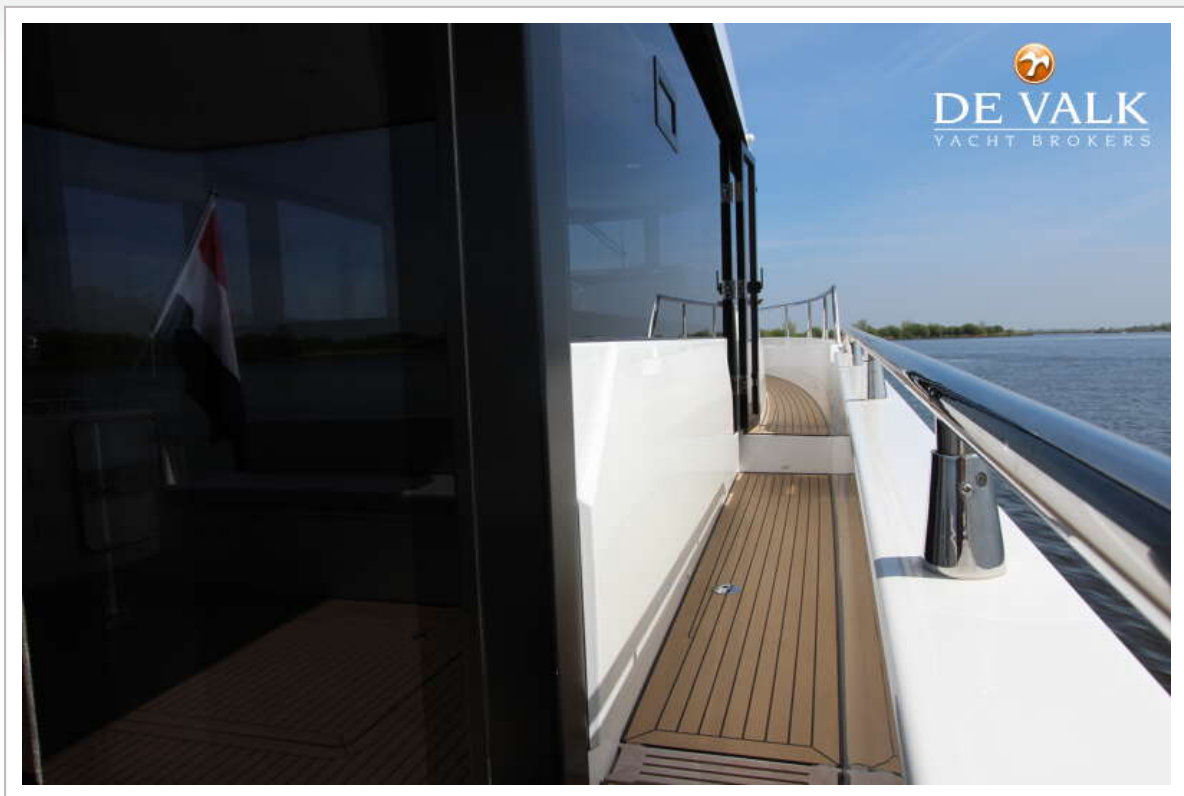
SEAFARING 44 COUPÉ



SEAFARING 44 COUPÉ



SEAFARING 44 COUPÉ



SEAFARING 44 COUPÉ



SEAFARING 44 COUPÉ



SEAFARING 44 COUPÉ



SEAFARING 44 COUPÉ



SEAFARING 44 COUPÉ



SEAFARING 44 COUPÉ



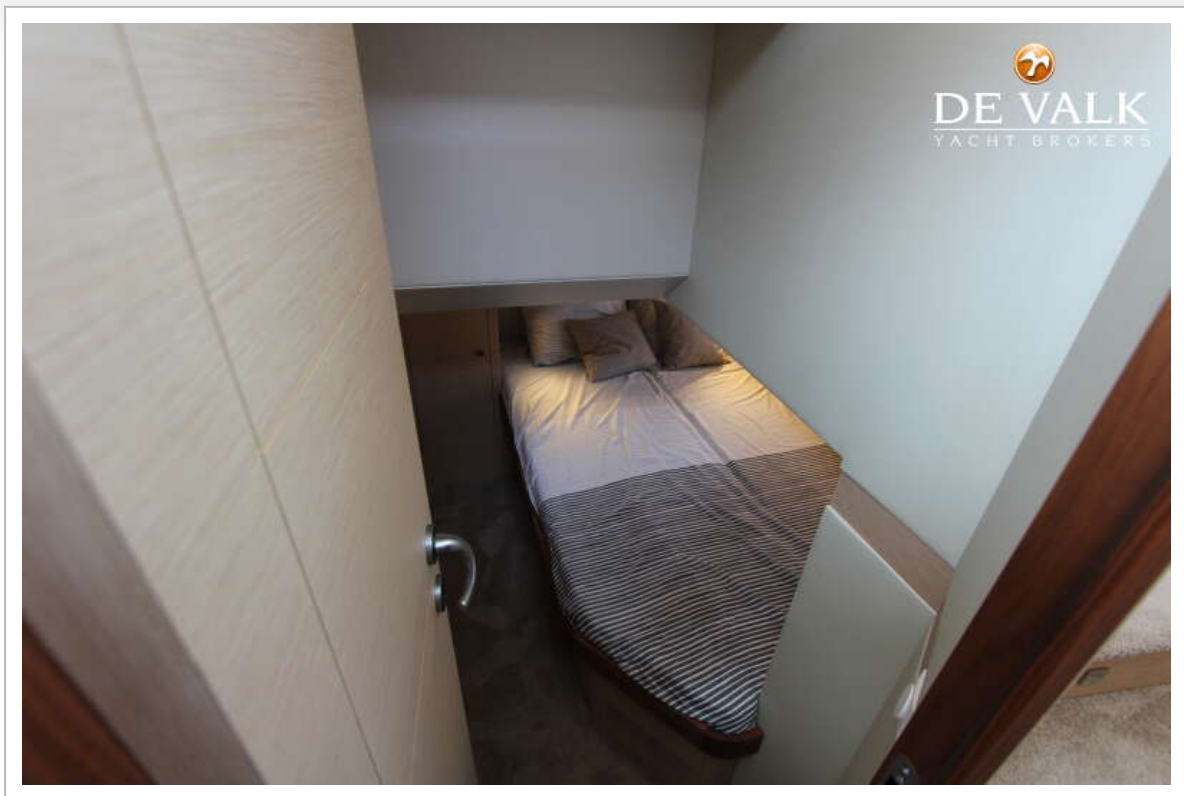
SEAFARING 44 COUPÉ



SEAFARING 44 COUPÉ



SEAFARING 44 COUPÉ



SEAFARING 44 COUPÉ



SEAFARING 44 COUPÉ



SEAFARING 44 COUPÉ

