



DE VALK  
YACHT BROKERS



## FLEMING 55



DE VALK  
YACHT BROKERS

## BROKER'S COMMENTS

Fleming 55 pilothouse motor yacht "Grand Lady", built by Fleming yachts in 2001 and customized (to the highest Swedish boat building craftsmanship) by her current owner in 2007. The current owner has more or less replaced all her equipment to the newest standard plus she has been massively upgraded . This Fleming 55 with extended saloon, closed galley and three cabin layout offers a lot of living space, perfect for a longer stay on board! Very well maintained and viewing in our salesmarina in Sneek - Holland is highly recommended!

*Pieter Bosma*

## SPECIFICATIONS

<b>Dimensions</b>	18.50 x 4.88 x 1.53 (m)	<b>Builder</b>	Flemming Yachts
<b>Built</b>	2001	<b>Cabins</b>	3
<b>Material</b>	GRP	<b>Berths</b>	5
<b>Engine(s)</b>	2 x Caterpillar 3208 diesel	<b>Hp/Kw</b>	2 x 435.00 (hp), 319.73 (kw)
<b>Asking price</b>	sold (VAT )	<b>Lying</b>	at sales office

## CONTACT

<b>Sales office</b>	De Valk Sneek	<b>Telephone</b>	+31 (0)515 42 80 30
<b>Address</b>	Zwolsmanweg 7 8606 KC Sneek NL	<b>E-mail</b>	sneek@devalk.nl

## DISCLAIMER

These particulars are given in good faith as supplied but cannot be guaranteed.



## GENERAL

Model	FLEMING 55
Type	motor yacht
LOA (m)	18,50
LWL (m)	15,27
Beam (m)	4,88
Draft (m)	1,53
Air draft (m)	4,57
Headroom (m)	1,95
Year built	2001
Builder	Flemming Yachts
Country	Taiwan
Designer	Larry Drake
Displacement (t)	32
CE norm	C
Hull material	GRP
Hull colour	white
Hull shape	yes
Keel type	long keel
Superstructure material	GRP
Rubbing strake	stainless steel
Deck material	GRP
Deck finish	teak
Cockpit deck finish	teak
Antifouling (year)	2018
Dorades	yes
Window frame	aluminium
Window material	tempered glass
Deckhatch	yes
Portholes	yes
Flybridge	yes



Flybridge suncover	yes
Radar arch	collapsible
Fuel tank (litre)	3880
Level indicator (fuel tank)	yes
Freshwater tank (litre)	1132
Level indicator (freshwater)	Phillipi 2017
Blackwater tank (litre)	yes
Level indicator (blackwater)	yes
Blackwater tank extraction	deck extraction + pump
Wheel steering	hydraulic
Inside helm position	yes
Outside helm position	hydraulic
Flybridge helm position	hydraulic
More info on paintwork	hull and superstructure painted in AWI-grip
Extra info	underwatership completely overhauled 2017
Extra info	This yacht is offered without a CVO certificate

## ACCOMMODATION

Cabins	3
Berths	5
Interior	American maple
Floor	carpet
Open cockpit	yes
Pilot house	yes
Deck saloon	yes
Headroom saloon (m)	2,00
Heating	diesel ducted hot air 2x Webasto 2007
Air-conditioning	single cycle airco Webasto 2007
Chart table	yes
Dinette	yes
Sliding door to aft deck	yes



Galley	yes
Countertop	stainless steel
Sink	stainless steel
Cooker	induction Gaggenau CX480 2017
Oven	Grill Gaggenau VR230 2017
Extractor	yes
Microwave/oven combi	Gaggenau EB388 2017
Fridge	Liebherr UIK1550 2017
Freezer	Liebherr UIG1323-21 2017
Hot water system	220V + engine Quik 80 Ltr
Water pressure system	electrical
Dishwasher	yes
Owners cabin	French bed
Bed length (m)	2,00
Wardrobe	hanging/drawers/shelves
Bathroom	en suite
Toilet	en suite
Toilet system	electric Tecma 2017
Wash basin	in the bathroom
Shower	en suite
Guest cabin 1	twin single
Bed length (m)	2,00
Wardrobe	hanging and drawers
Guest cabin 2	bunk bed
Bed length (m)	2,00
Wardrobe	yes
Toilet	yes
Toilet system	electric Tecma 2017
Wash basin	in the bathroom
Shower	yes
Washing machine	Electrolux 2007



## MACHINERY

No of engines	2
Make	Caterpillar
Type	3208
HP	435
kW	319.73
Fuel	diesel
Year installed	2005
Maximum speed (kn)	14
Cruising speed (kn)	8
Consumption (l/hr)	10
Engine hours	700
Engine cooling system	freshwater heat exchanger
Drive	shaft
Gearbox	hydraulic Twindisk
Engine controls	electrical Kobelt 6505+ 6527 and remote control by wire 2017
Bowthruster	electric Sidepower
Sternthruster	electric Sidepower
Exhaust	watercooled
Thrust bearing	yes
Propeller type	fixed
Propeller blades	4
Propeller shaft material	stainless steel
Shaft lubrication	water
Manual bilge pump	yes
Electric bilge pump	yes
Electrical installation	yes
Generator	silent separator Fisher Panda 15000i 15 Kva 2017
Running hours generator	140
Generator 2	Fisher panda 6,8 Kva 2007
Batteries	12x A602/1010C10 2.0 V and 4x 220Ah



Battery monitor	Phillipi
Battery charger/inverter	Studer XTH5000/24 2017
Shorepower	with cable
Watermaker	Sea Recovery 2017
Stabilizers	fin Vetus 2017
Trimtabs	yes

## NAVIGATION

Depth sounder/log	Raymarine i70S
Autopilot	Raymarine P70RS + Evolution EV400 power
Radar	Raymarine Quantum Q24C 18°
Plotter	1x Raymarine Axiom 9 Pro-S + 1x Axiom
Plotter/GPS	2x Raymarine Axiom 12
Electronic chart(s)	yes
AIS transponder	Raymarine AIS650
Camera	Raymarine M232 IR
Navigation lights	yes
Searchlight	DHR 230V 250W 18000 lumen 2017
Extra info	all navigational equipment replaced in 2018
Extra info	Maretron DSM150 fuel flow control

## EQUIPMENT

Cockpit cover	2017
Bimini	yes
Sun awning	yes
Cockpit cushions	yes
Cockpit chairs	yes
Bathing platform	yes
Boarding ladder	stainless steel
Transom door	yes
Gangway	SVB 2017



Deck shower	on the flybridge and in the cockpit
Anchor	Stainless Steel 45 Kg Ultra Marine 2017
Anchor chain	10 mm 110 meter Cromox iso 4565 2017
Chain counter	Lofrans 2017
Windlass	electrical Loffrans Falcon 24V 2000W
Deck wash	yes
Dinghy	rigid inflatable A-F24
Outboard	Mercury 30 Pk
Deck crane	hydraulic With remote control
Sea railing	yes
Grab rail (superstructure)	stainless steel
Railing side opening gates	yes
Life raft	container Plastimo 2017 iso 52391
Life raft (pers)	8
Wiper	yes
Horn	air pressure 130 decibel
Fenders	yes
Mooring lines	yes
TV	Flatscreen 2018
Cockpit speakers	Speaker in cockpit and flybridge
Speakers in salon	yes
Fire extinguisher	yes
Extra info	large storgae box on fly 2017

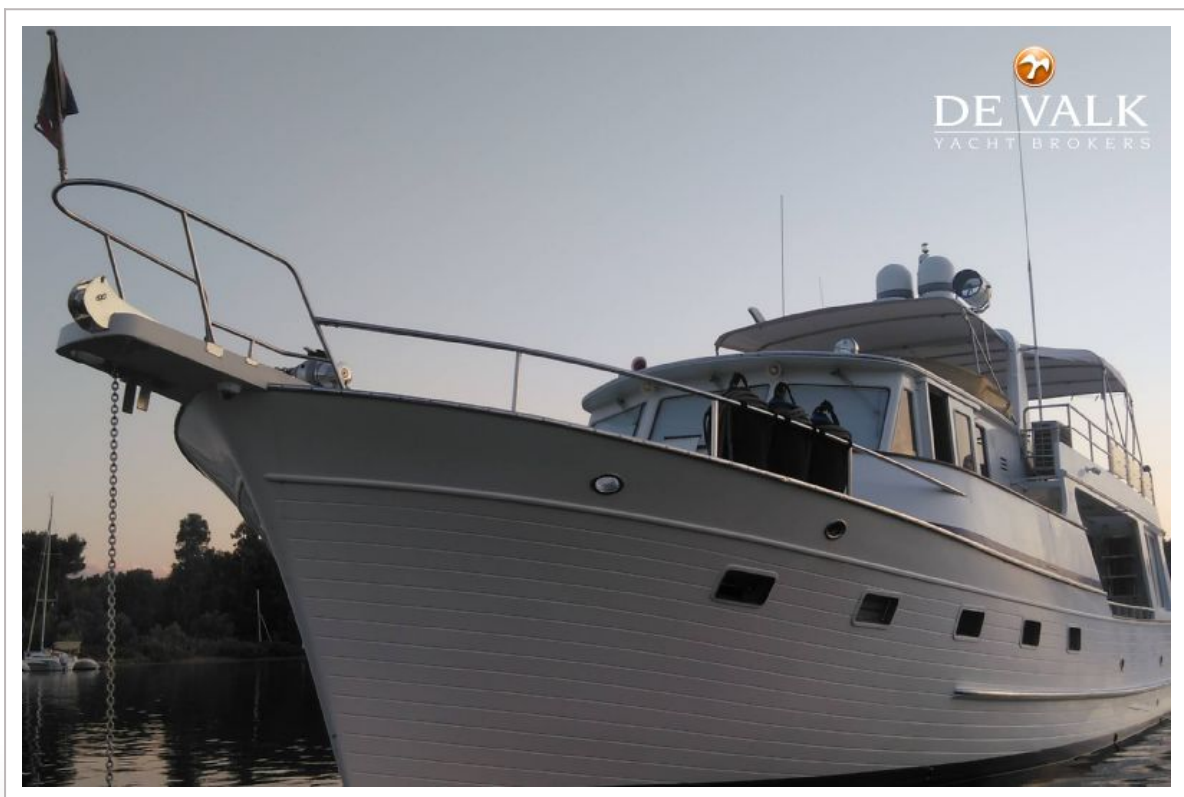




# FLEMING 55



# FLEMING 55



# FLEMING 55

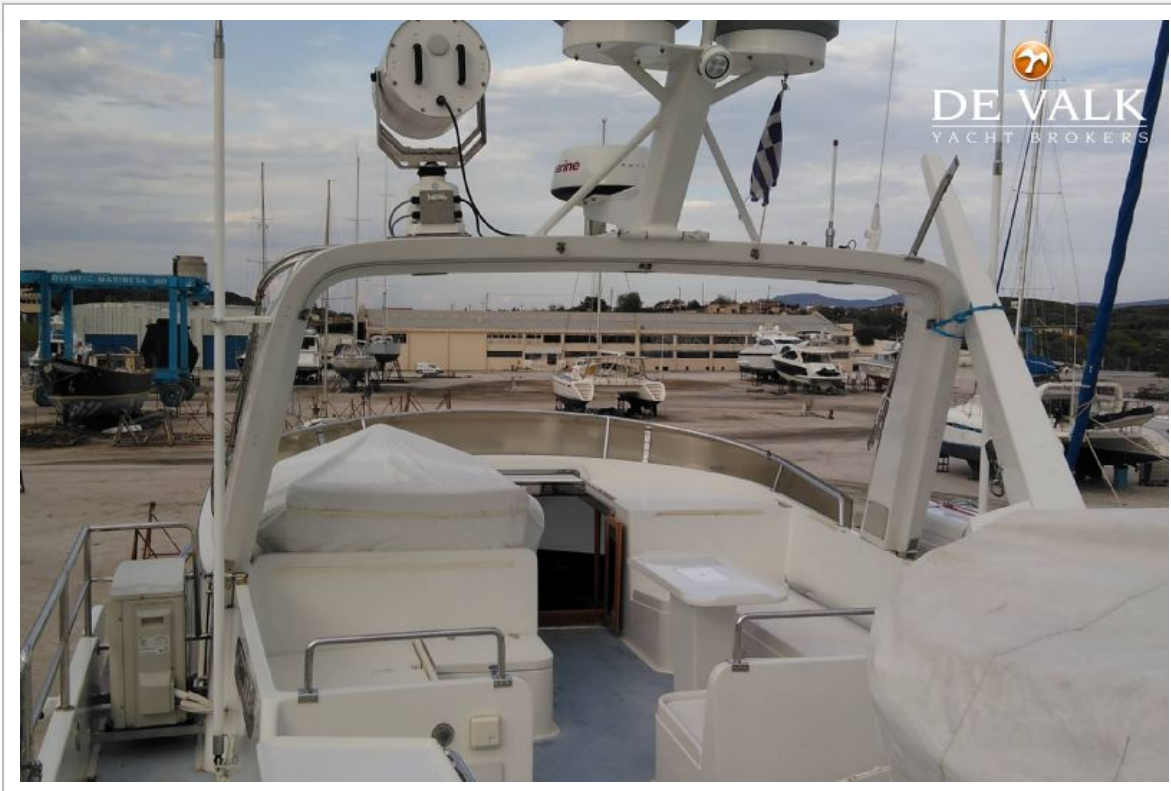




# FLEMING 55



# FLEMING 55





# FLEMING 55







## FLEMING 55





## FLEMING 55



## FLEMING 55

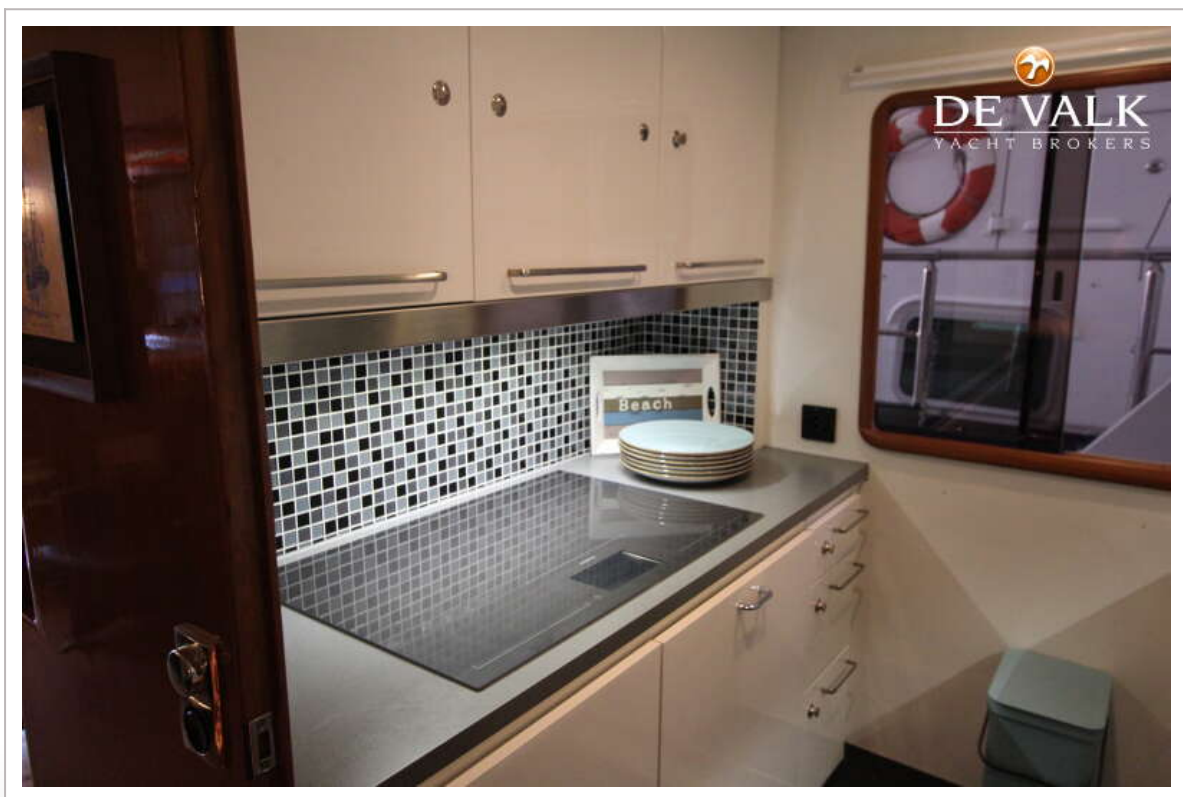
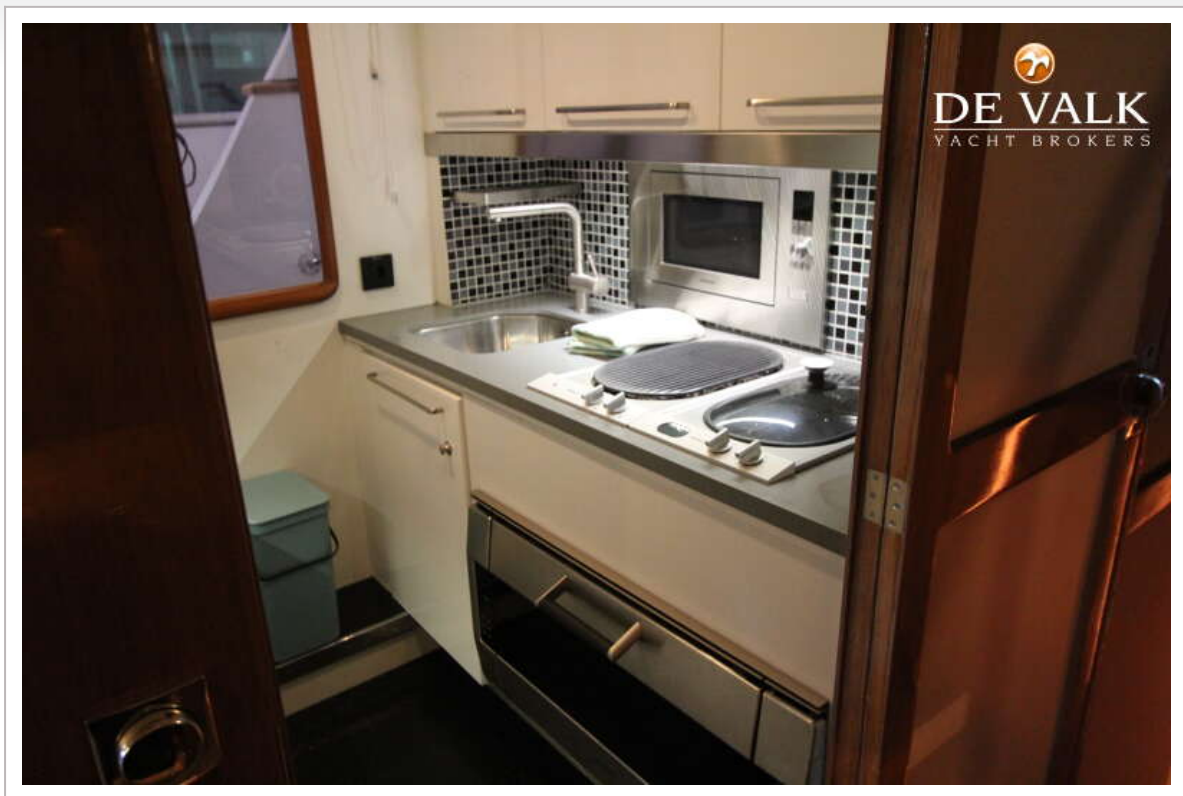




## FLEMING 55

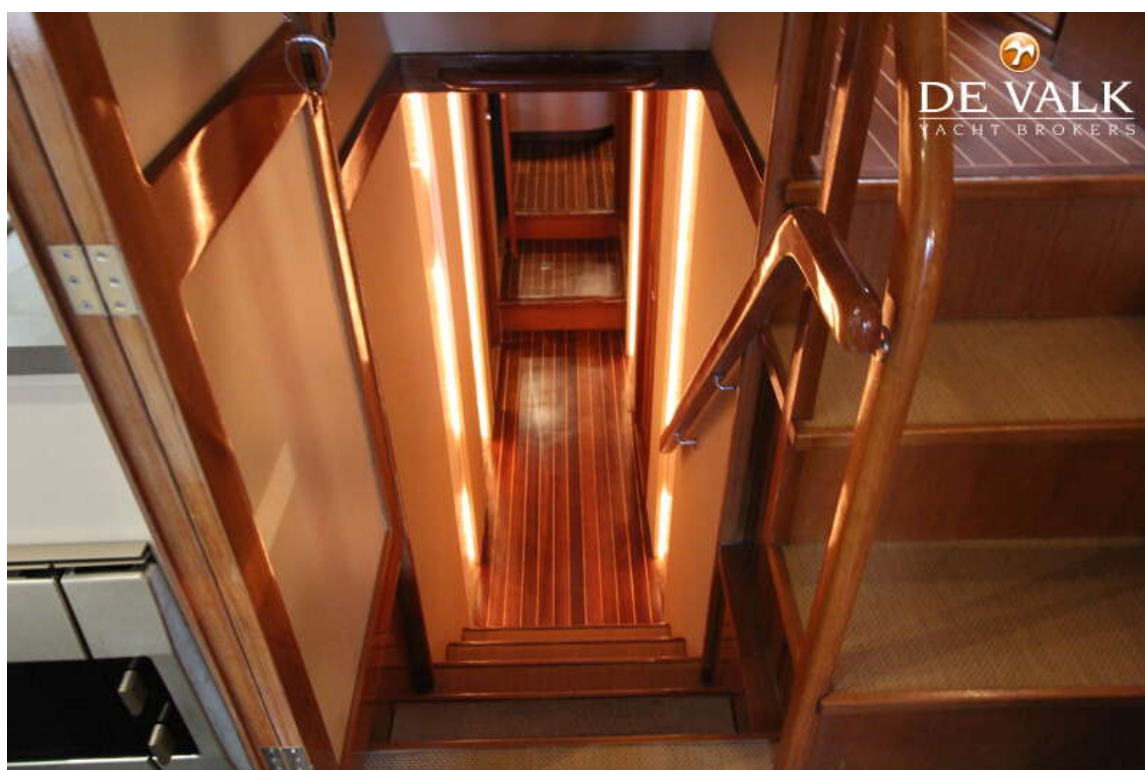


# FLEMING 55





# FLEMING 55



## FLEMING 55



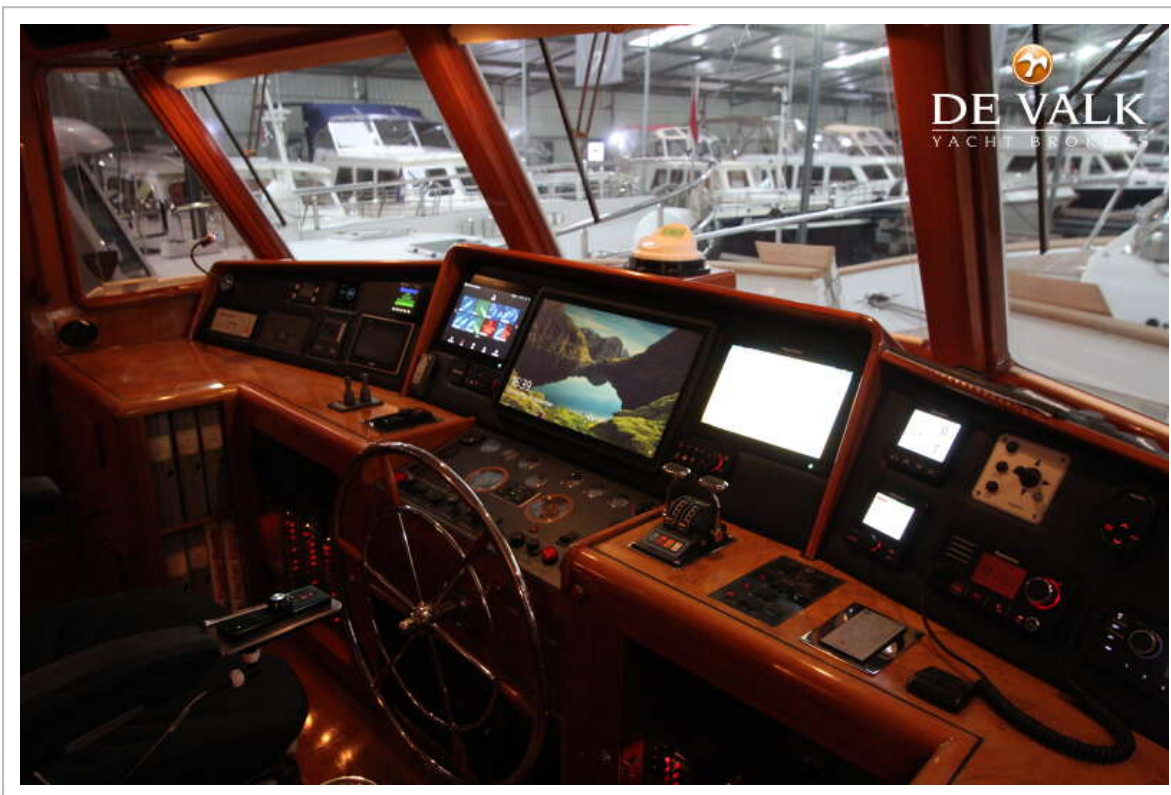




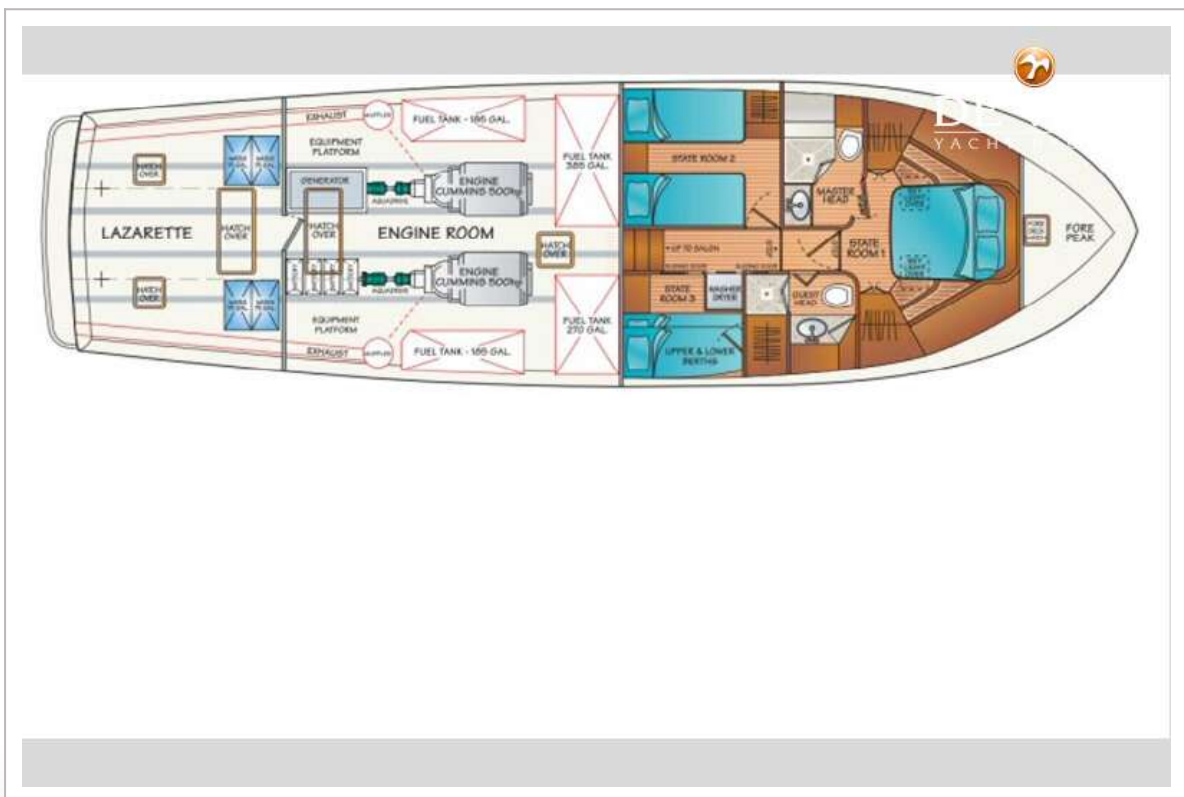




## FLEMING 55



# FLEMING 55





# FLEMING 55

