



DE VALK
YACHT BROKERS



RELINE 41 SLX



DE VALK
YACHT BROKERS

RELINE 41 SLX

BROKER'S COMMENTS

A well maintained Reline 41 SLX which is offered for sale by her second owner. Equipped with bow- and sternthruster, a 170 hp. Vetus Deutz diesel engine, Eberspacher hot air heating and a warm cherry interior en newly mounted Double glazing. The aft cabin is provided with a French bed and separate shower. The front cabin has a V berth. A new teakdeck is placed on the aftdeck. This Reline is ready to go on any trip with her new owners. Make an appointment for inspection, most of the time available in Friesland.

Pieter Bosma

SPECIFICATIONS

Dimensions	12.60 x 3.80 x 1.15 (m)	Builder	Reline Yachts
Built	2010	Cabins	2
Material	Steel	Berths	6
Engine(s)	1 x Vetus Deutz DT66422A diesel	Hp/Kw	170.00 (hp), 124.95 (kw)
Asking price	sold (VAT)	Lying	at sales office

CONTACT

Sales office	De Valk Sneek	Telephone	+31 (0)515 42 80 30
Address	Zwolsmanweg 7 8606 KC Sneek NL	E-mail	sneek@devalk.nl

DISCLAIMER

These particulars are given in good faith as supplied but cannot be guaranteed.



RELINE 41 SLX

GENERAL

Model	RELINE 41 SLX
Type	motor yacht
LOA (m)	12,60
Beam (m)	3,80
Draft (m)	1,15
Air draft (m)	4,85
Air draft min (m)	2,70
Year built	2010
Builder	Reline Yachts
Country	The Netherlands
Displacement (t)	12
CE norm	B
Hull material	steel
Hull colour	white
Hull thickness (mm)	4 mm
Hull shape	hard chine
Keel type	long keel
Superstructure material	steel
Superstructure (mm)	4 mm
Deck plate thickness (mm)	4 mm
Rubbing strake	yes
Deck material	steel
Deck finish	non-skid paint
Superstructure deck finish	paint
Cockpit deck finish	Aftdeck teak (2022)
Antifouling (year)	2023
Dorades	yes
Window frame	aluminium
Window material	double glazing 2022
Deckhatch	yes



RELINE 41 SLX

Portholes	aluminium
Insulation	yes
Radar arch	collapsible
Fuel tank (litre)	steel 650 l.
Level indicator (fuel tank)	yes
Freshwater tank (litre)	stainless steel 2x 250 l.
Level indicator (freshwater)	yes
Blackwater tank (litre)	polyethylene 130 l.
Blackwater tank extraction	deck extraction + pump
Wheel steering	hydraulic
Outside helm position	yes

ACCOMMODATION

Cabins	2
Berths	6
Interior	cherry
Floor	teak and holly
Aft deck	yes
Saloon	yes
Headroom saloon (m)	2.00 m.
Heating	diesel ducted hot air Eberspacher Airtronic L-B5
Aft Cabin	yes
Dinette	yes
Dinette to convert into berth	yes
Opening door to aft deck	yes
Galley	yes
Countertop	plastic
Sink	stainless steel
Cooker	calor gas 4-burner
Microwave	Exquisit
Fridge	Coolmatic MDC 110



RELINE 41 SLX

Hot water system	220V + engine Isotemp 40 l.
Water pressure system	electrical
Owners cabin	French bed
Bed length (m)	2.00 m.
Wardrobe	hanging and shelves
Bathroom	en suite
Toilet system	yes
Wash basin	in the bathroom
Shower	en suite
Guest cabin 1	v-bed
Bed length (m)	2.00 m.
Wardrobe	hanging and shelves
Toilet	separate
Toilet system	electric
Wash basin	at the toilet

MACHINERY

No of engines	1
Make	Vetus Deutz
Type	DT66422A
HP	170
kW	124.95
Fuel	diesel
Year installed	2010
Maximum speed (kn)	8
Cruising speed (kn)	7
Consumption (l/hr)	6
Engine hours	1100
Engine cooling system	freshwater heat exchanger
Drive	shaft
Shaft seal	yes



RELINE 41 SLX

Engine controls	yes
Gearbox	hydraulic ZF 45-1
Bowthruster	electric BOW 95 8 ps
Sternthruster	electric Bow 95 8 ps
Exhaust	watercooled
Thrust bearing	yes
Propeller type	fixed 22 x 18
Propeller blades	4 bladed
Propeller shaft material	stainless steel RVS 316 40 mm
Shaft lubrication	water
Manual bilge pump	yes
Electric bilge pump	yes
Electrical installation	12/220 V
Batteries	yes
Start battery	1x 135 Ah
Service battery	4x 200 Ah (2022)
Bowthruster battery	2x 230 Ah
Battery charger/inverter	Phoenix Combi 12/3000/120
Diode battery combiners	yes
Shorepower	with cable

NAVIGATION

Electric compass	VDO
Depth sounder/log	VDO
VHF	Shipmate RS81
Rudder angle indicator	VDO
Plotter/GPS	Raymarine Axiom (2017)
Navigation lights	yes

EQUIPMENT

Fixed windscreen	yes
-------------------------	-----



RELINE 41 SLX

Sprayhood	yes
Bimini	yes
Bathing platform	yes
Boarding ladder	stainless steel
Bow ladder	yes
Anchor	Pool Stainless steel
Anchor chain	yes
Windlass	manual
Deck wash	yes
Dinghy	inflatable Viamare
Outboard	yes
Davits	stainless steel
Davits controls	manual
Sea railing	yes
Grab rail (superstructure)	yes
Railing side opening gates	yes
Wiper	yes
Horn	electric
Fenders	yes
Mooring lines	yes
TV	yes
TV receiver	yes
Radio-cd player	yes
Speakers in salon	yes
Clock - barometer	yes
Extra info	2 fahrrader



RELINE 41 SLX



RELINE 41 SLX



RELINE 41 SLX



RELINE 41 SLX



RELINE 41 SLX



RELINE 41 SLX



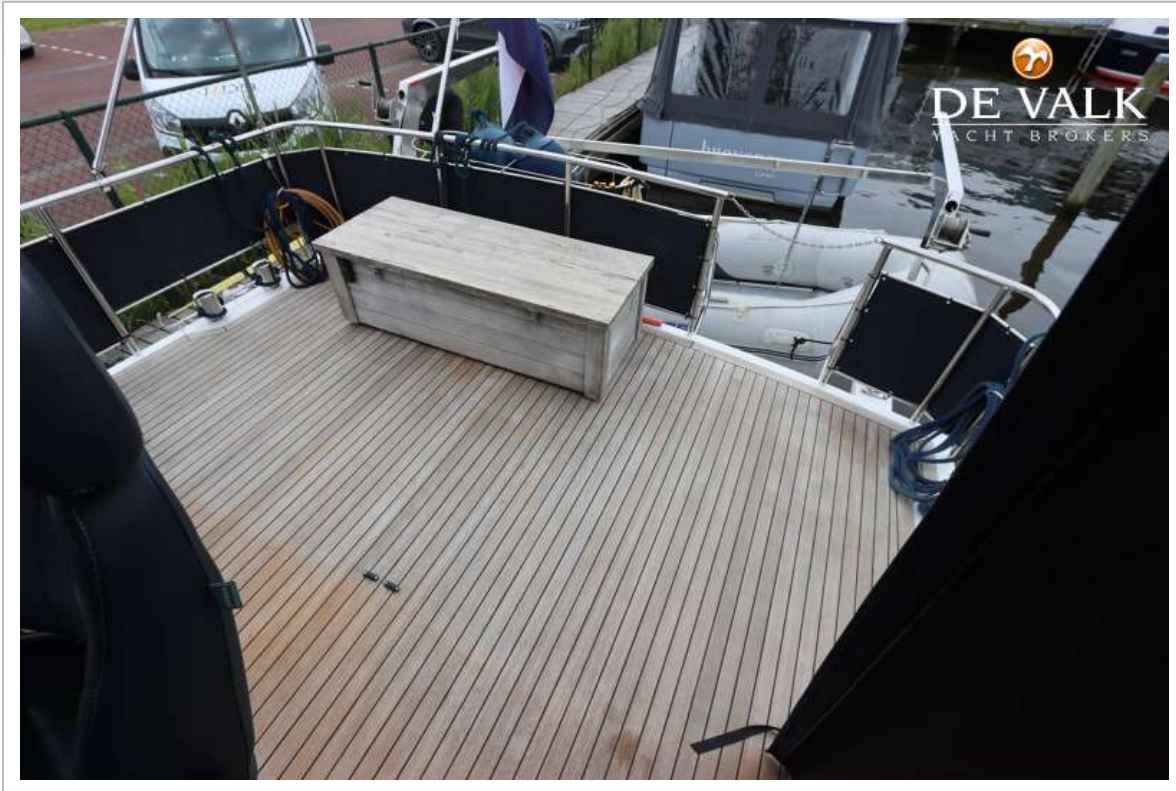
RELINE 41 SLX



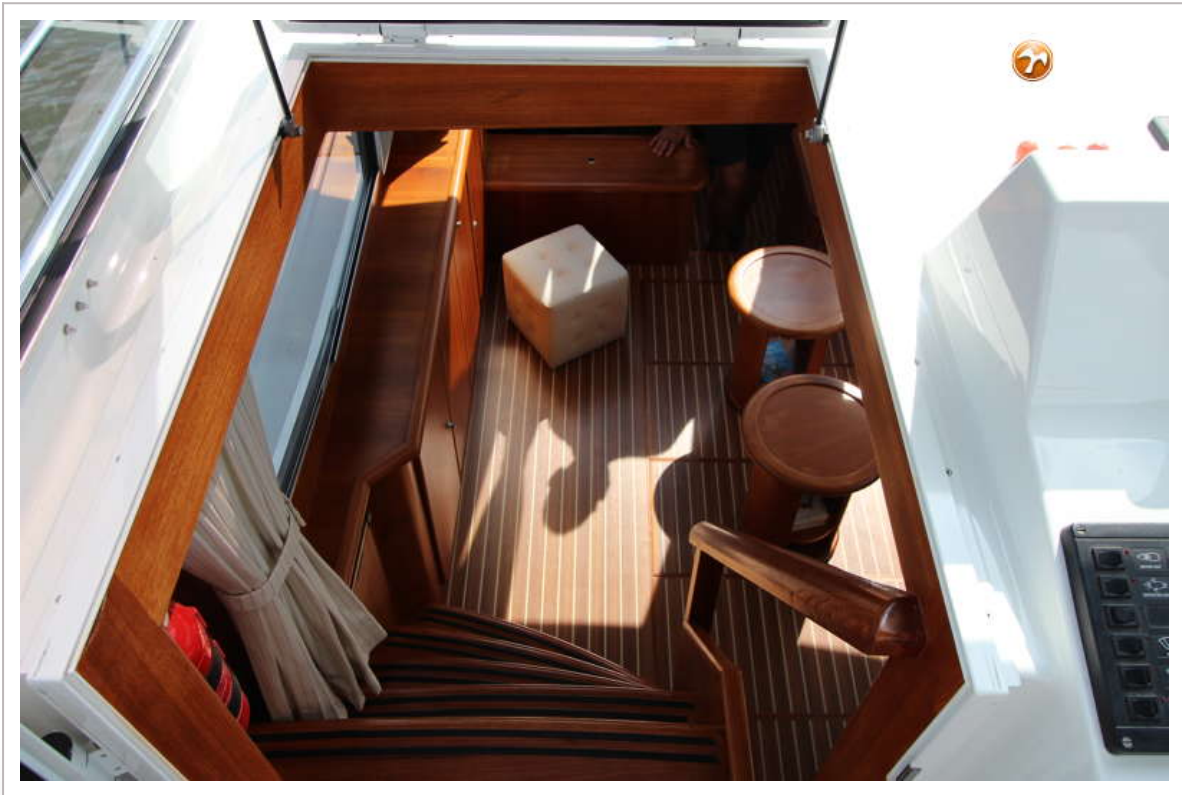
RELINE 41 SLX



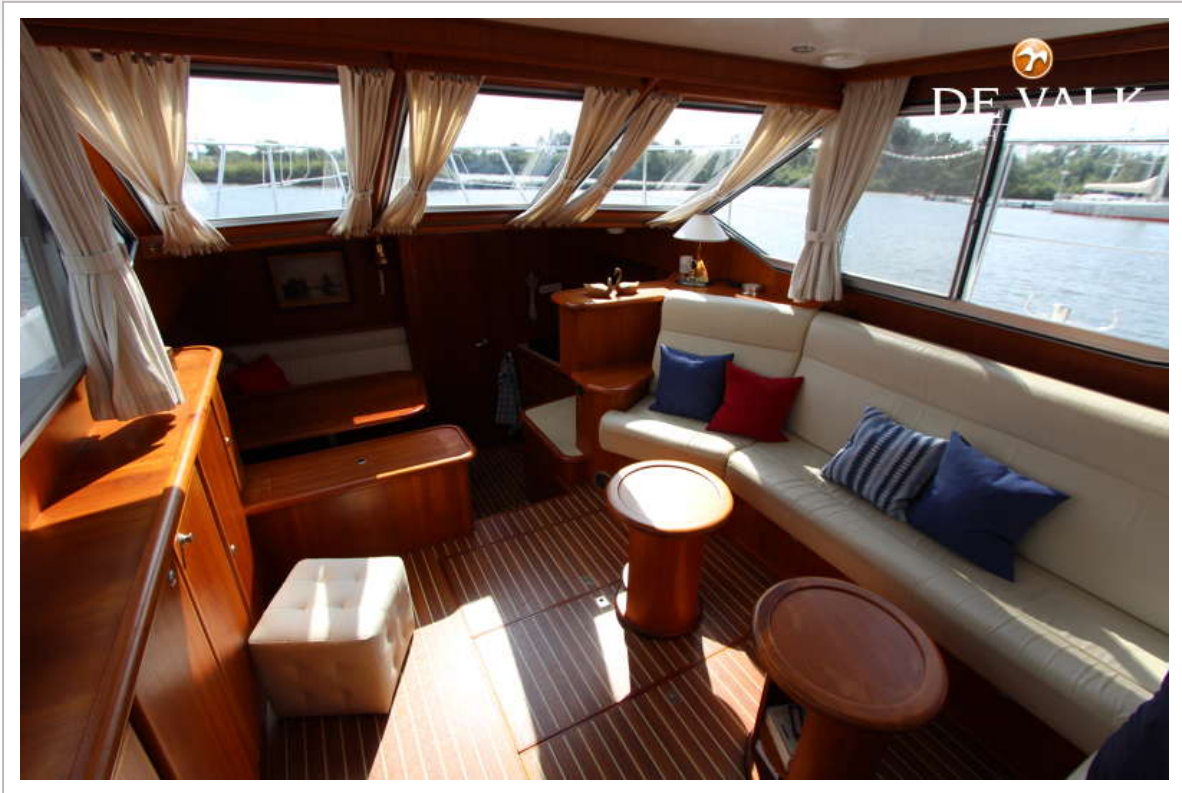
RELINE 41 SLX



RELINE 41 SLX



RELINE 41 SLX



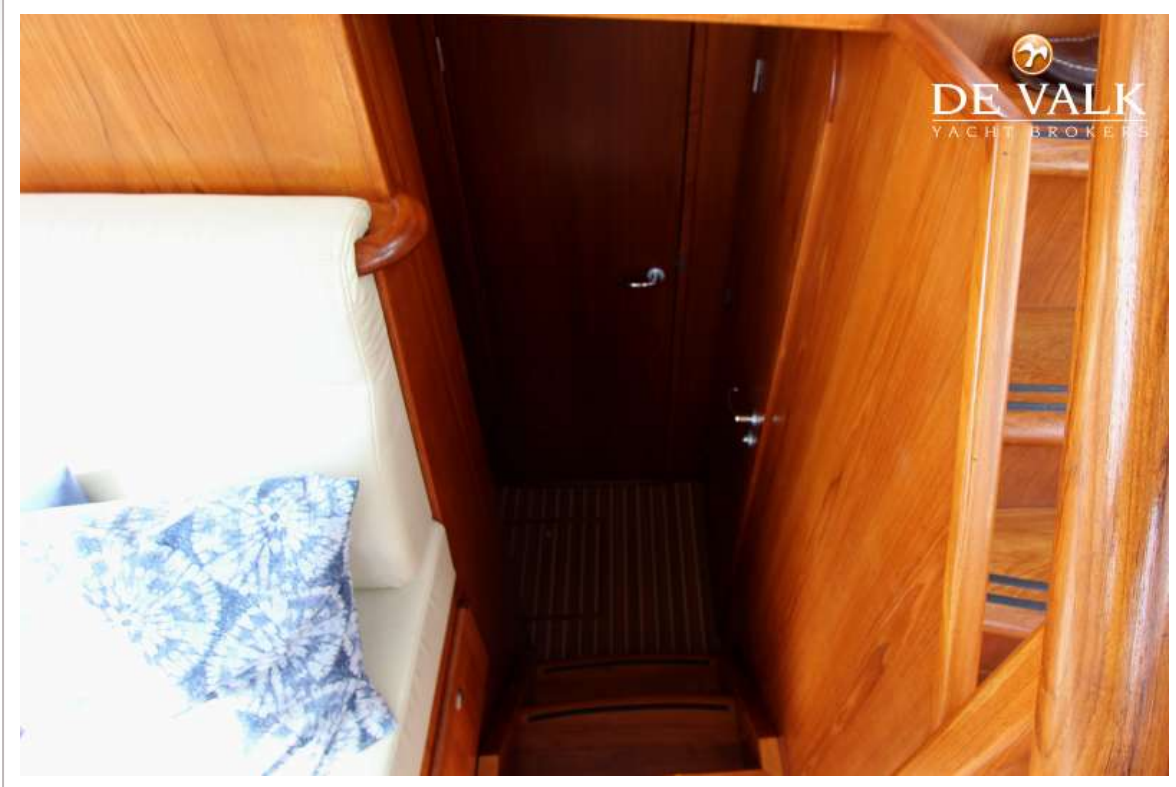
RELINE 41 SLX



RELINE 41 SLX



RELINE 41 SLX



RELINE 41 SLX



RELINE 41 SLX



RELINE 41 SLX



RELINE 41 SLX

