



ALMTRAWLER 1600 AD

ALMTRAWLER 1600 AD

BROKER'S COMMENTS

Almtrawler 1600 AD "Hong Kong Star" was built at Jacht- en Scheepsbouw De Alm in Werkendam, the Netherlands. A motoryacht built for travelling, therefore she is well equipped with i.a.: two Perkins diesel engines, hydraulic bowthruster, stabilizers, double glazed windows and Kabola central heating. This Almtrawler has a spacious interior with three cabins and two bathrooms. Come over to our covered sales marina in Sneek for a viewing!

Arne Doodeman

SPECIFICATIONS

Dimensions	15.98 x 4.85 x 1.40 (m)	Builder	Jacht en scheepsbouw De Alm B.V.
Built	2006	Cabins	3
Material	Steel	Berths	6
Engine(s)	2 x Perkins Sabre M225TI diesel	Hp/Kw	2 x 225.00 (hp), 165.00 (kw)
Asking price	sold (VAT)	Lying	at sales office

CONTACT

Sales office	De Valk Sneek	Telephone	+31 (0)515 42 80 30
Address	Zwolsmanweg 7 8606 KC Sneek NL	E-mail	sneek@devalk.nl

DISCLAIMER

These particulars are given in good faith as supplied but cannot be guaranteed.



GENERAL

Model	ALMTRAWLER 1600 AD
Type	motor yacht
LOA (m)	15,98
Beam (m)	4,85
Draft (m)	1,40
Air draft (m)	3,50
Year built	2006
Builder	Jacht en scheepsbouw De Alm B.V.
Country	The Netherlands
Displacement (t)	33
CE norm	A
Hull material	steel
Hull colour	blue (2019)
Hull thickness (mm)	6 mm
Hull shape	multi hard chine
Superstructure material	steel
Superstructure (mm)	4 mm
Deck plate thickness (mm)	4 mm
Rubbing strake	rubber
Deck material	steel
Deck finish	teak
Superstructure deck finish	paint
Cockpit deck finish	teak
Antifouling (year)	2019
Window frame	aluminium Gebo
Window material	double glazing
Deckhatch	2x Gebo
Portholes	Gebo
Flybridge	yes
Flybridge suncover	yes



ALMTRAWLER 1600 AD

Radar arch	collapsible
Fuel tank (litre)	steel 3950 l. (2x 1320 l., 310 l. & 1000 l.)
Level indicator (fuel tank)	VDO
Fuel daytank (litre)	310 l.
Freshwater tank (litre)	stainless steel 1410 l.
Level indicator (freshwater)	VDO
Blackwater tank (litre)	stainless steel 550 l.
Level indicator (blackwater)	Vetus
Wheel steering	hydraulic
Inside helm position	yes
Flybridge helm position	hydraulic
More info on paintwork	hull and antifouling painted in 2019
Extra info	bulbous bow

ACCOMMODATION

Cabins	3
Berths	6
Floor	teak
Open cockpit	yes
Saloon	yes
Heating	central heating Kabola B17 tap
Chart table	yes
Dinette	yes
Opening door to cockpit	yes
Galley	yes
Countertop	yes
Sink	stainless steel
Cooker	electric Etna 4-burner
Extractor	yes
Microwave/oven combi	Electrolux
Fridge	2x



ALMTRAWLER 1600 AD

Hot water system	220V + engine
Water pressure system	electrical
Dishwasher	Miele
Owners cabin	French bed
Wardrobe	hanging and shelves
Bathroom	shared
Toilet	shared
Toilet system	vacuum
Wash basin	in the bathroom
Shower	shared
Guest cabin 1	double bed
Wardrobe	hanging and shelves
Bathroom	shared
Toilet	shared
Toilet system	vacuum
Wash basin	in the bathroom
Shower	shared
Guest cabin 2	bunk bed
Wardrobe	yes
Washing machine/dryer combi	Bosch (2019)
Flybridge	yes

MACHINERY

No of engines	2
Make	Perkins Sabre
Type	M225TI
HP	225
kW	165,00
Fuel	diesel
Engine hours	4786
Engine cooling system	freshwater heat exchanger



ALMTRAWLER 1600 AD

Drive	shaft
Engine controls	bowden cable
Gearbox	hydraulic Twindisk MC5050SC
Bowthruster	hydraulic
Exhaust	watercooled
Thrust bearing	Phyton drive
Propeller type	fixed
Propeller blades	5-bladed
Propeller shaft material	stainless steel
Shaft lubrication	water
Electric bilge pump	yes
Generator	Fisher Panda 7,7 Kva
Running hours generator	1450 (31-10-2019)
Start battery	yes
Service battery	yes
Generator battery	yes
Battery monitor	Mastervolt
Battery charger	Mastervolt
Inverter	Mastervolt
Shorepower	with cable
Insulation transformer	Mastervolt
Stabilizers	fin Navio 301
Extra info	Double Racor dieselfilter

NAVIGATION

Compass	Raymarine ST60
Depth sounder/log	Raymarine ST60 tridata
Windset	Raymarine ST60
VHF	Raymarine Ray 240E
Autopilot	Raymarine ST6001 with smartcontrol remote
Rudder angle indicator	Raymarine ST60



Radar	Raymarine
Radar/GPS/plotter	Raymarine C120
Radio receiver	MRD 80 marine radio decoder
Navigation lights	yes
Searchlight	2x

EQUIPMENT

Cockpit cover	yes
Cockpit cushions	yes
Cockpit table	yes
Bathing platform	yes
Boarding ladder	stainless steel
Transom door	yes
Gangway	can be attached to the stern
Deck shower	yes
Anchor	Stainless steel
Anchor chain	stainless steel
Windlass	hydraulic Lofrance Falkon
Windlass aft	hydraulic Lofrance Falkon Stern anchor windlass
Deck wash	yes
Deck crane	hydraulic Stainless steel
Sea railing	stainless steel
Railing side opening gates	3x
Life raft	container Ocean safety
Life raft (pers)	8 pers
Last life raft survey	valid till 04-2021
Lifebuoy	yes
Wiper	5x
Horn	yes
Fenders	yes
Mooring lines	yes



ALMTRAWLER 1600 AD

Radio-cd player

Clock - barometer

Fire extinguisher

Alpine

Baro- & hygrometer

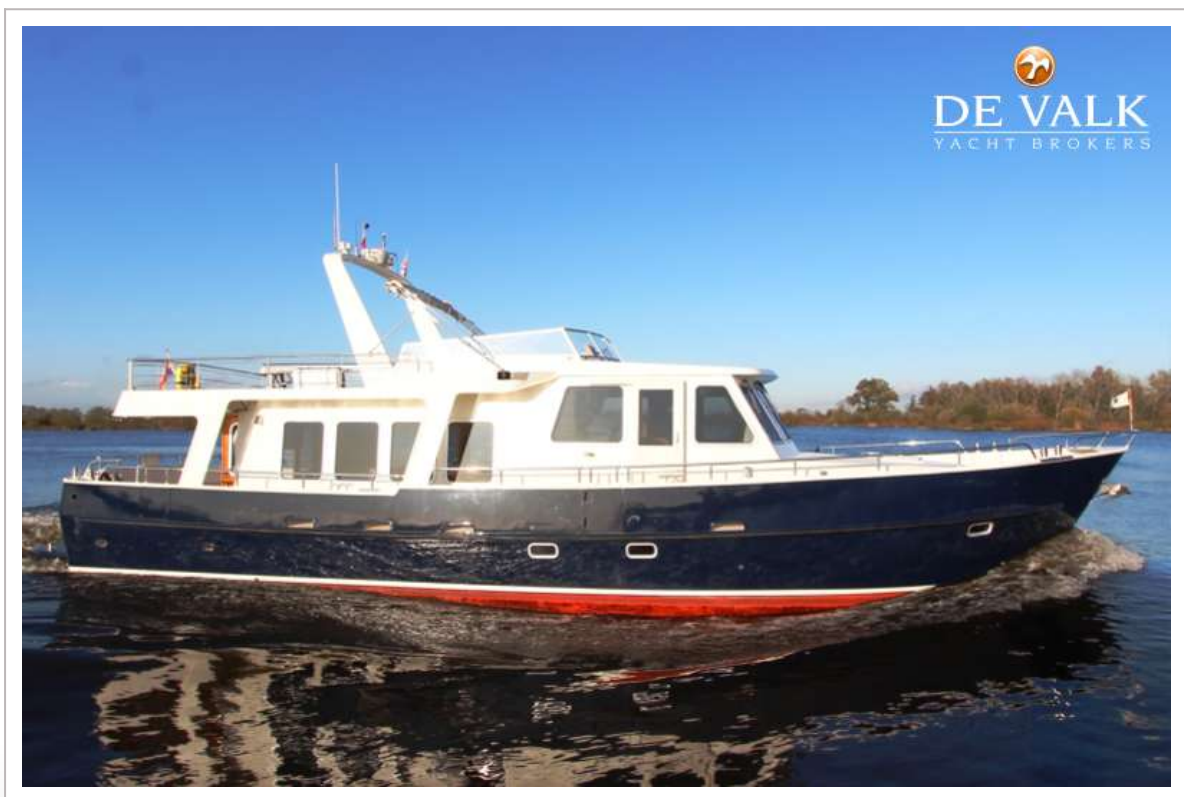
yes



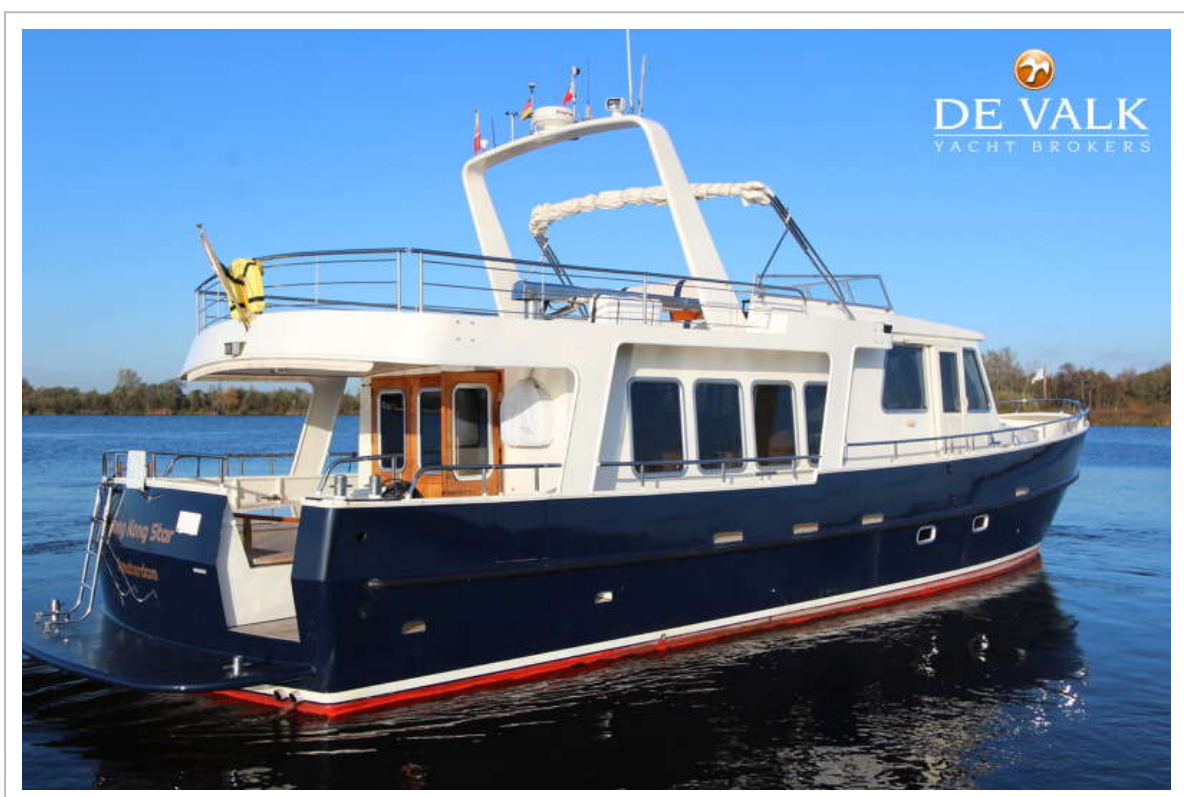
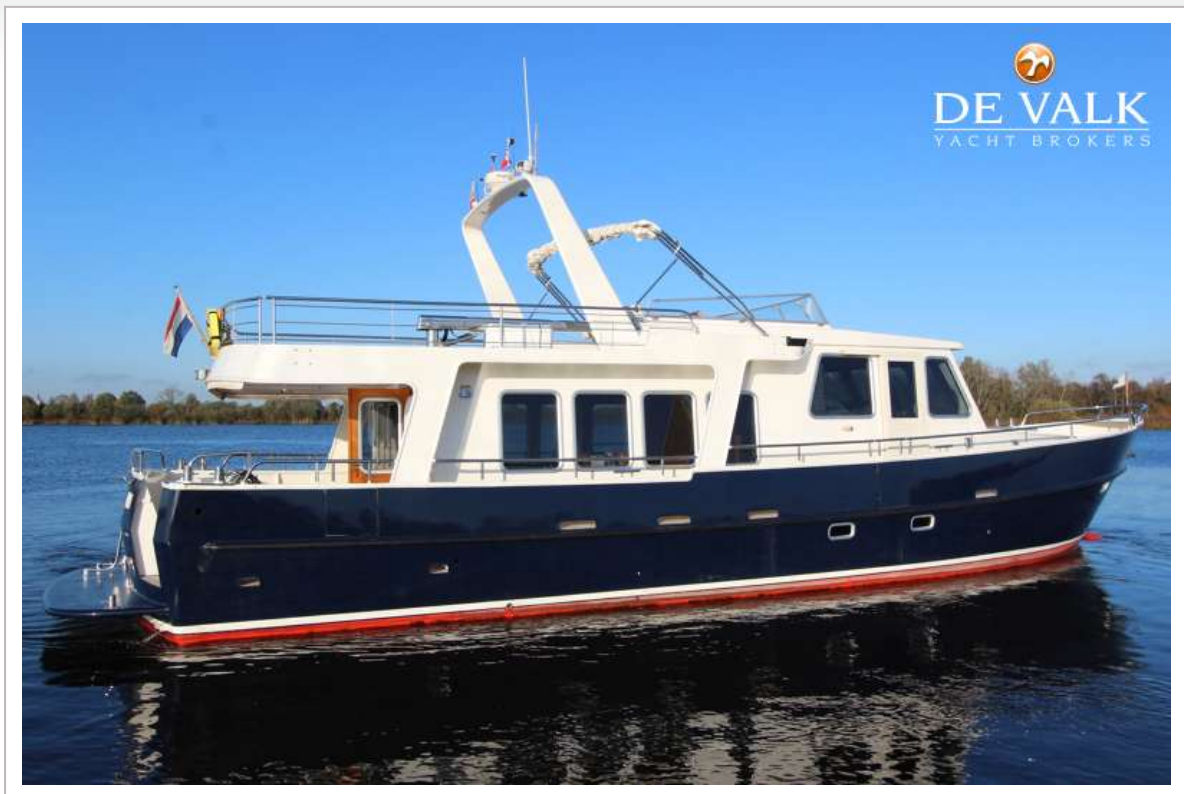
ALMTRAWLER 1600 AD



ALMTRAWLER 1600 AD



ALMTRAWLER 1600 AD



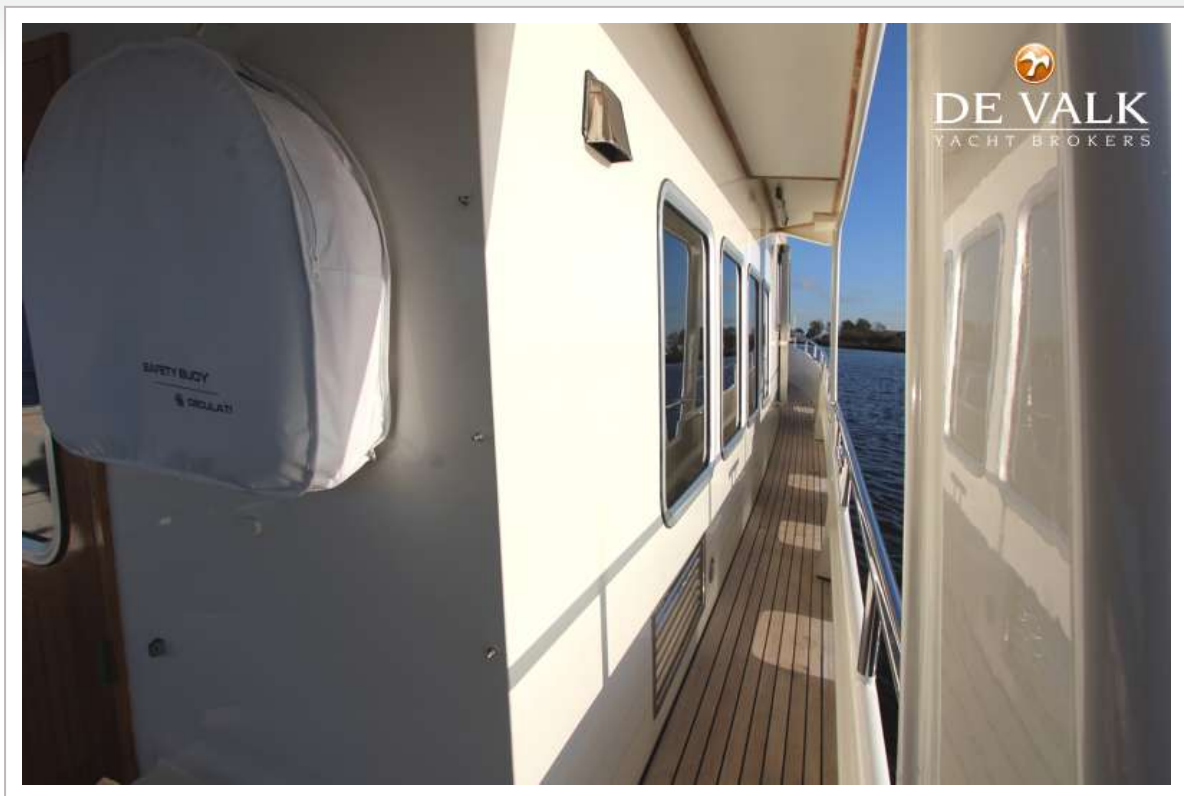
ALMTRAWLER 1600 AD



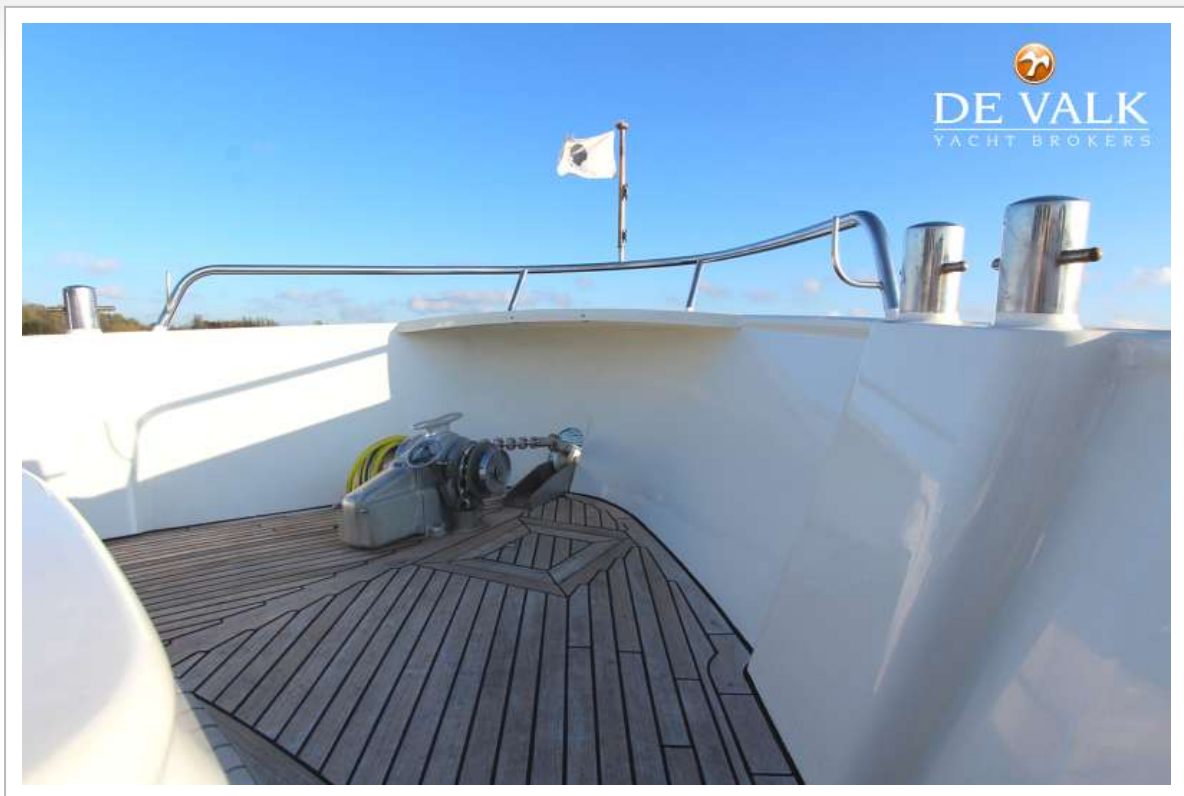
ALMTRAWLER 1600 AD



ALMTRAWLER 1600 AD



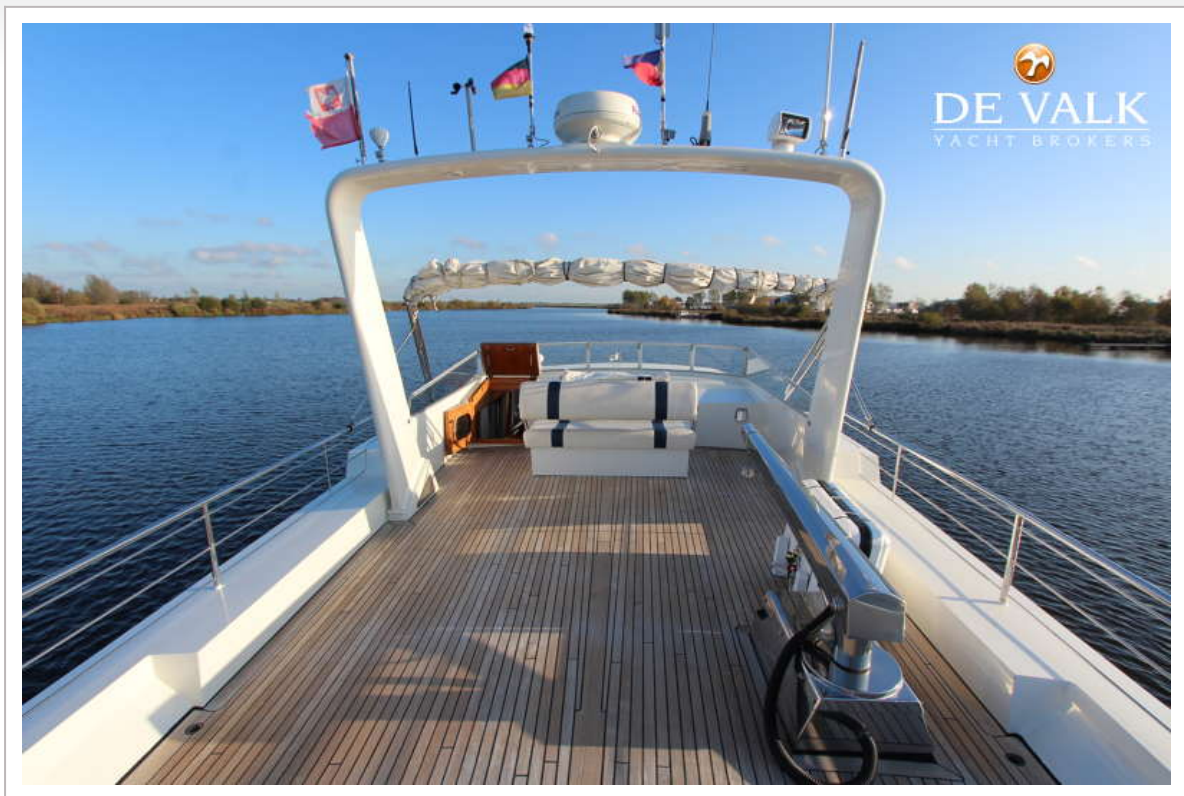
ALMTRAWLER 1600 AD



ALMTRAWLER 1600 AD



ALMTRAWLER 1600 AD



ALMTRAWLER 1600 AD



ALMTRAWLER 1600 AD



ALMTRAWLER 1600 AD



ALMTRAWLER 1600 AD



ALMTRAWLER 1600 AD



ALMTRAWLER 1600 AD



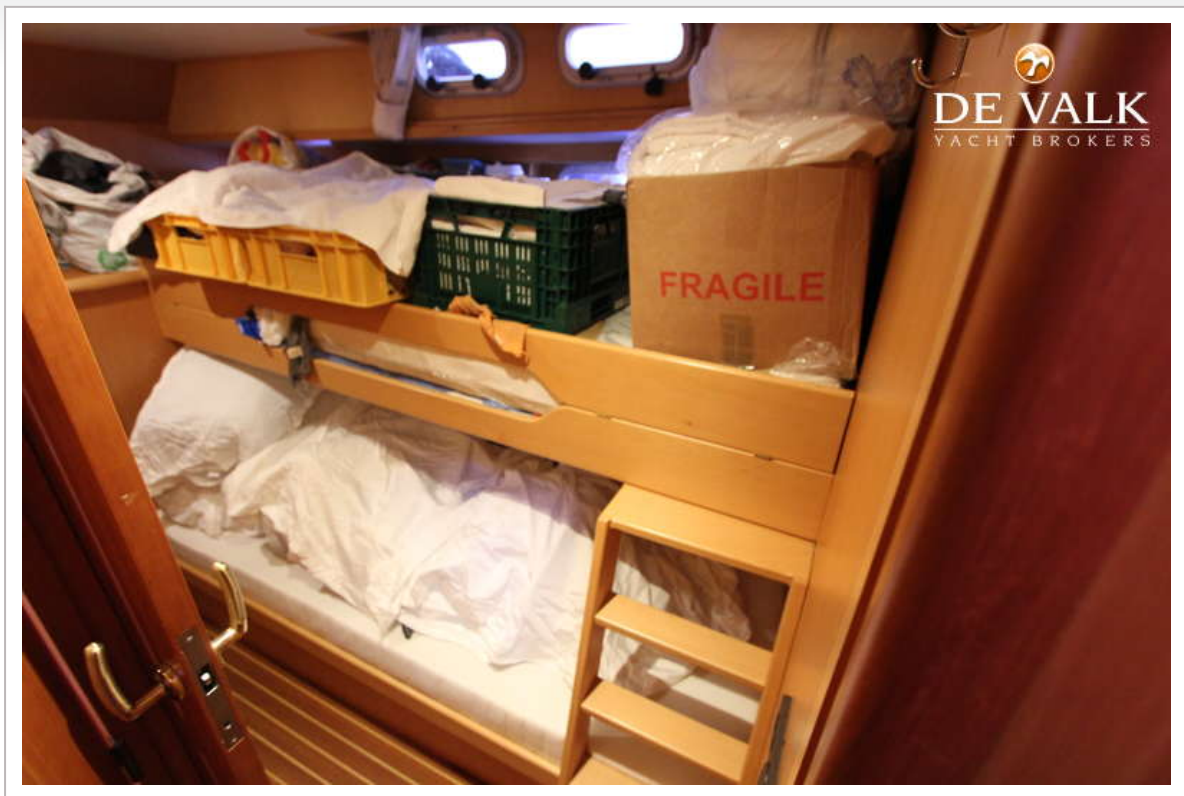
ALMTRAWLER 1600 AD



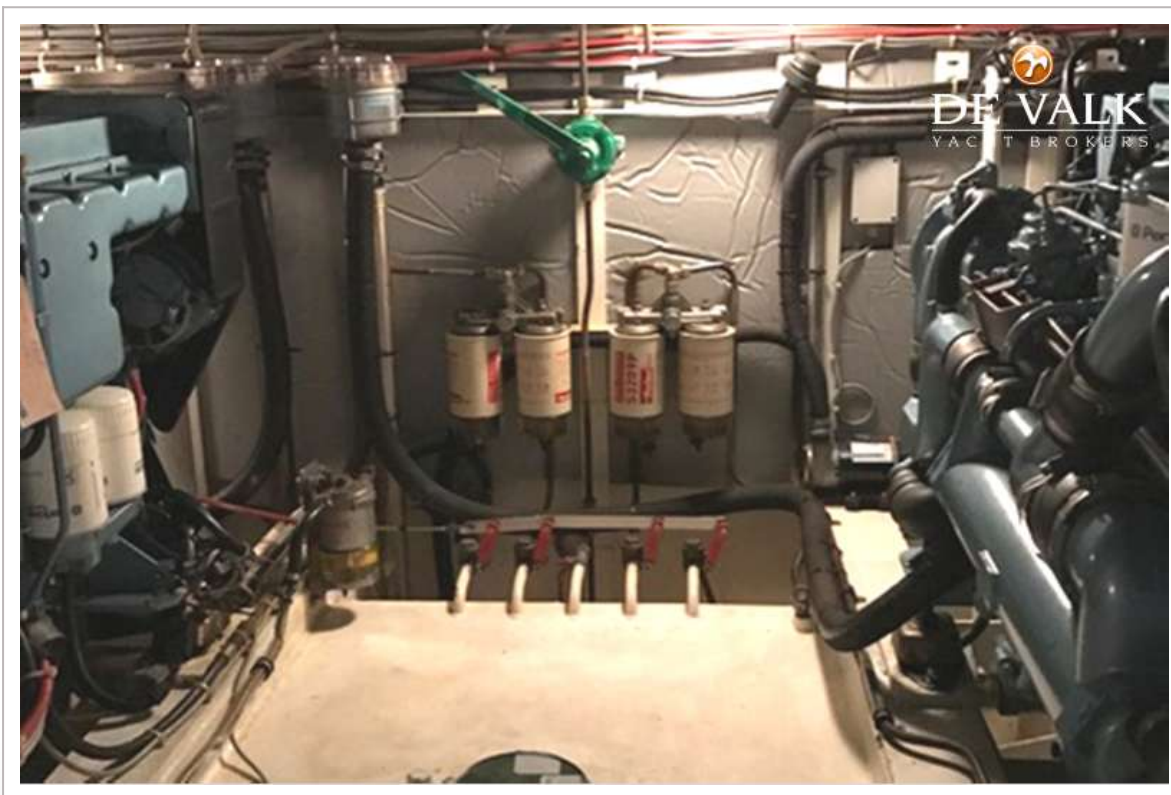
ALMTRAWLER 1600 AD



ALMTRAWLER 1600 AD



ALMTRAWLER 1600 AD



ALMTRAWLER 1600 AD



ALMTRAWLER 1600 AD

