



LINDEN KOTTER 13.70 AK



LINDEN KOTTER 13.70 AK

BROKER'S COMMENTS

This Lindenkotter "Frisian Pride" is simply stunning in all respects: design, layout, craftsmanship, equipment and maintenance are all up to a very high standard. She is equipped with a Mastervolt 8 kW generator, hydraulic anchor winch, hydraulic bow- and sternthruster etc. The layout of this Lindenkotter is very suitable for 4 persons with a spacious owners cabin and a more than comfortable guest cabin. Please make an appointment to view "Frisian Pride" now!

Pieter Bosma

SPECIFICATIONS

Dimensions	14.00 x 4.40 x 1.25 (m)	Builder	Linden Jachtbouw
Built	2001	Cabins	2
Material	Steel	Berths	6
Engine(s)	1 x Vetus Deutz DT64425A diesel	Hp/Kw	159.00 (hp), 116.87 (kw)
Asking price	sold (VAT)	Lying	at sales office

CONTACT

Sales office	De Valk Sneek	Telephone	+31 (0)515 42 80 30
Address	Zwolsmanweg 7 8606 KC Sneek NL	E-mail	sneek@devalk.nl

DISCLAIMER

These particulars are given in good faith as supplied but cannot be guaranteed.



GENERAL

Model	LINDEN KOTTER 13.70 AK
Type	motor yacht
LOA (m)	14,00
Beam (m)	4,40
Draft (m)	1,25
Air draft (m)	3,60
Air draft min (m)	2,80
Headroom (m)	2,00
Year built	2001
Builder	Linden Jachtbouw
Country	The Netherlands
Designer	Th. Gillissen
Displacement (t)	23
CE norm	B
Hull material	steel
Hull colour	blue
Hull thickness (mm)	keel 12 mm. and 6 mm., bottom 6 mm., sides and decks 5 mm.
Hull shape	round-bilged Overnaads gejoggeld
Keel type	long keel
Superstructure material	steel
Superstructure (mm)	4
Deck plate thickness (mm)	5
Rubbing strake	rubber
Deck material	steel
Deck finish	teak
Superstructure deck finish	paint
Dorades	yes
Window frame	aluminium
Window material	double glazing
Deckhatch	Gebo



LINDEN KOTTER 13.70 AK

Portholes	aluminium 6x
Insulation	rockwool
Mast can be lowered	hydraulic
Fuel tank (litre)	steel 2x 450 l.
Level indicator (fuel tank)	yes
Freshwater tank (litre)	stainless steel 750 l.
Level indicator (freshwater)	yes
Blackwater tank (litre)	polyethylene
Level indicator (blackwater)	yes
Blackwater tank extraction	deck extraction + pump
Wheel steering	hydraulic
Outside helm position	hydraulic
Emergency tiller	yes
Extra info	two front windows can be opened

ACCOMMODATION

Cabins	2
Berths	6
Interior	teak
Floor	teak and holly
Aft deck	yes
Deck saloon	yes
Headroom saloon (m)	2.00 m.
Heating	central heating Kabola B12TAP
Aft Cabin	yes
Dinette	yes
Opening door to aft deck	yes
Galley	yes
Countertop	granite
Sink	stainless steel
Cooker	ceramic Siemens 4-burner



LINDEN KOTTER 13.70 AK

Extractor	yes
Microwave	Siemens Microwelle plus
Microwave/oven combi	Siemens
Fridge	with freezing compartment Coolmatic 110 l.
Hot water system	on central heating
Water pressure system	electrical
Owners cabin	French bed
Bed length (m)	2.00 m.
Wardrobe	hanging and drawers
Bathroom	shared
Toilet	shared
Toilet system	electric
Wash basin	at the toilet
Shower	separate
Guest cabin 1	v-bed
Bed length (m)	2.00 m.
Wardrobe	hanging and shelves
Washing machine/dryer combi	Brandt WST3921
Extra info	Kickspace heater at steering position
Extra info	steering chair

MACHINERY

No of engines	1
Make	Vetus Deutz
Type	DT64425A
HP	159
kW	116,87
Fuel	diesel
Year installed	2001
Maximum speed (kn)	9
Cruising speed (kn)	7



LINDEN KOTTER 13.70 AK

Consumption (l/hr)	5
Engine hours	1230
Engine cooling system	freshwater heat exchanger
Drive	shaft
Shaft seal	yes
Engine controls	bowden cable
Gearbox	hydraulic
Bowthruster	hydraulic
Sternthruster	hydraulic
Exhaust	watercooled
Thrust bearing	yes
Propeller type	fixed
Propeller blades	5-bladed
Propeller shaft material	stainless steel
Shaft lubrication	water
Electric bilge pump	yes
Generator	wet exhaust Mastervolt 8 kW
Batteries	yes
Start battery	1x 140 aH
Service battery	4x 210 aH Gel
Generator battery	1x 140 aH
Battery charger	Mastervolt 24/75
Inverter	Mastervolt 24/2500
Shorepower	with cable

NAVIGATION

Electric compass	Simrad IS15
Depth sounder	Simrad IS15
Log	Simrad IS15 (defect)
Windset	Simrad IS15
VHF	Shipmate RS8700



Autopilot	with wire remote Robertson AP20
GPS	Geonav 4C
Radar/plotter	Simrad CR40
Wifi antenna	yes
Navigation lights	yes
Searchlight	with remote control

EQUIPMENT

Fixed windscreen	yes
Sprayhood	yes
Cockpit cover	completely closable (2016)
Cockpit table	Teak
Cockpit chairs	Teak
Boarding ladder	stainless steel
Transom door	yes
Deck shower	yes
Anchor	Danforth
Anchor chain	yes
Windlass	hydraulic Vetus TG00155
Dinghy	inflatable Aqua Marin
Outboard	Yamaha 4 hp.
Davits	stainless steel
Davits controls	manual
Sea railing	stainless steel
Grab rail (superstructure)	stainless steel
Railing side opening gates	yes
Life raft	container Plastimo
Life raft (pers)	6
Last life raft survey	needs survey (2014)
Danbuoy	yes
Wiper	3x



LINDEN KOTTER 13.70 AK

Window ventilator	yes
Horn	electric
Fenders	yes
Mooring lines	yes
TV	Sony
TV receiver	yes
Radio-cd player	Panasonic
Speakers in salon	yes
Clock - barometer	yes
Fire extinguisher	yes
Auto extinguisher system	yes
Extra info	teakrail on railing aft



LINDEN KOTTER 13.70 AK



LINDEN KOTTER 13.70 AK



LINDEN KOTTER 13.70 AK



LINDEN KOTTER 13.70 AK



LINDEN KOTTER 13.70 AK



LINDEN KOTTER 13.70 AK



LINDEN KOTTER 13.70 AK



LINDEN KOTTER 13.70 AK



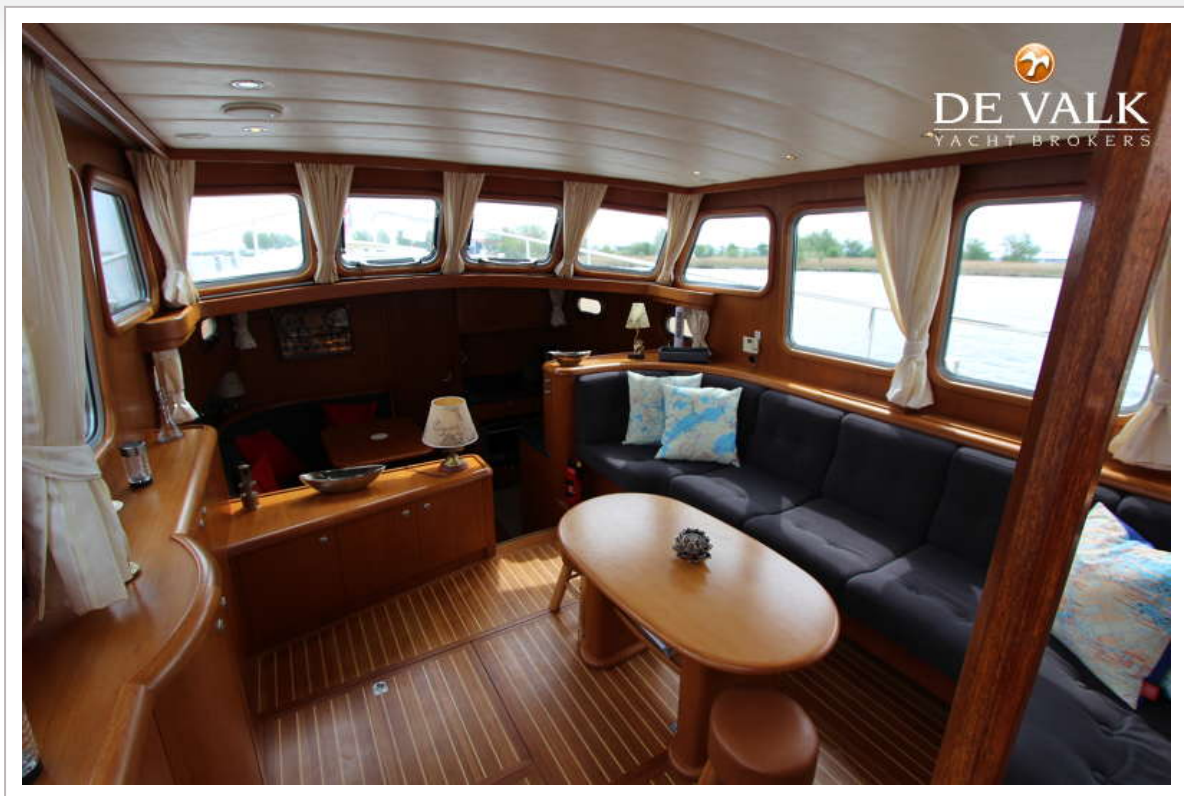
LINDEN KOTTER 13.70 AK



LINDEN KOTTER 13.70 AK



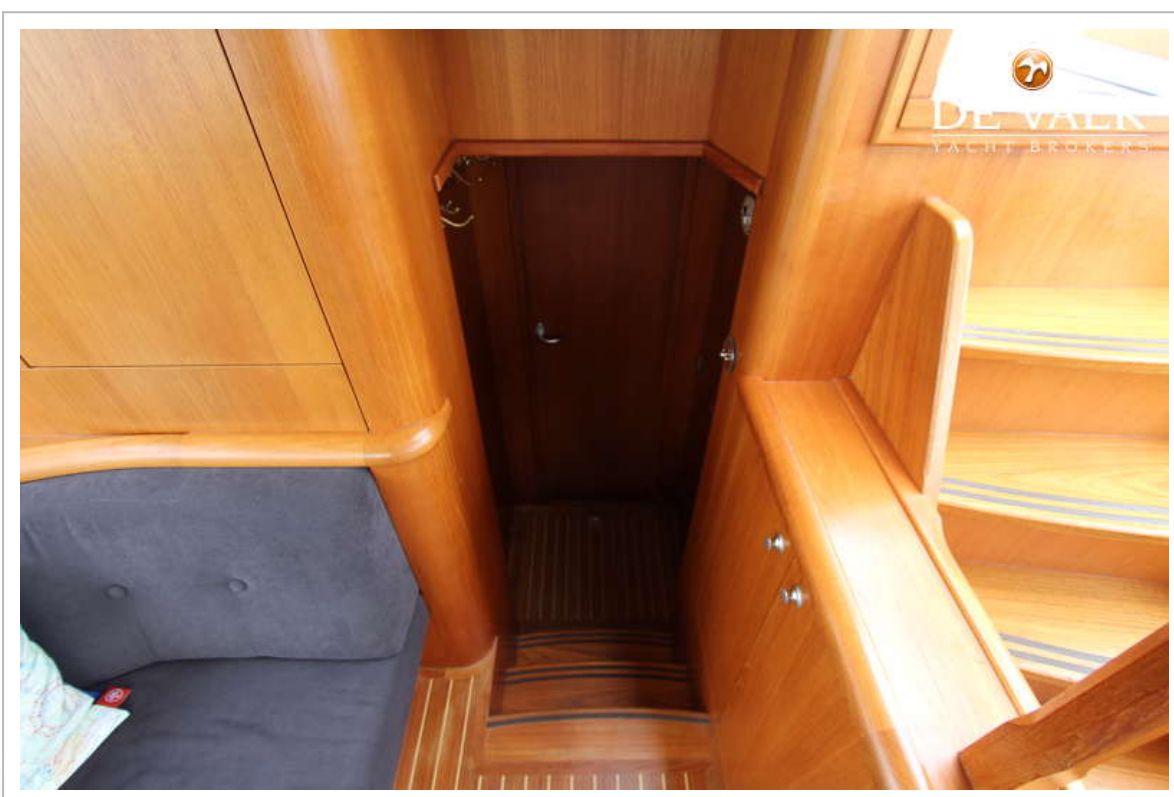
LINDEN KOTTER 13.70 AK



LINDEN KOTTER 13.70 AK



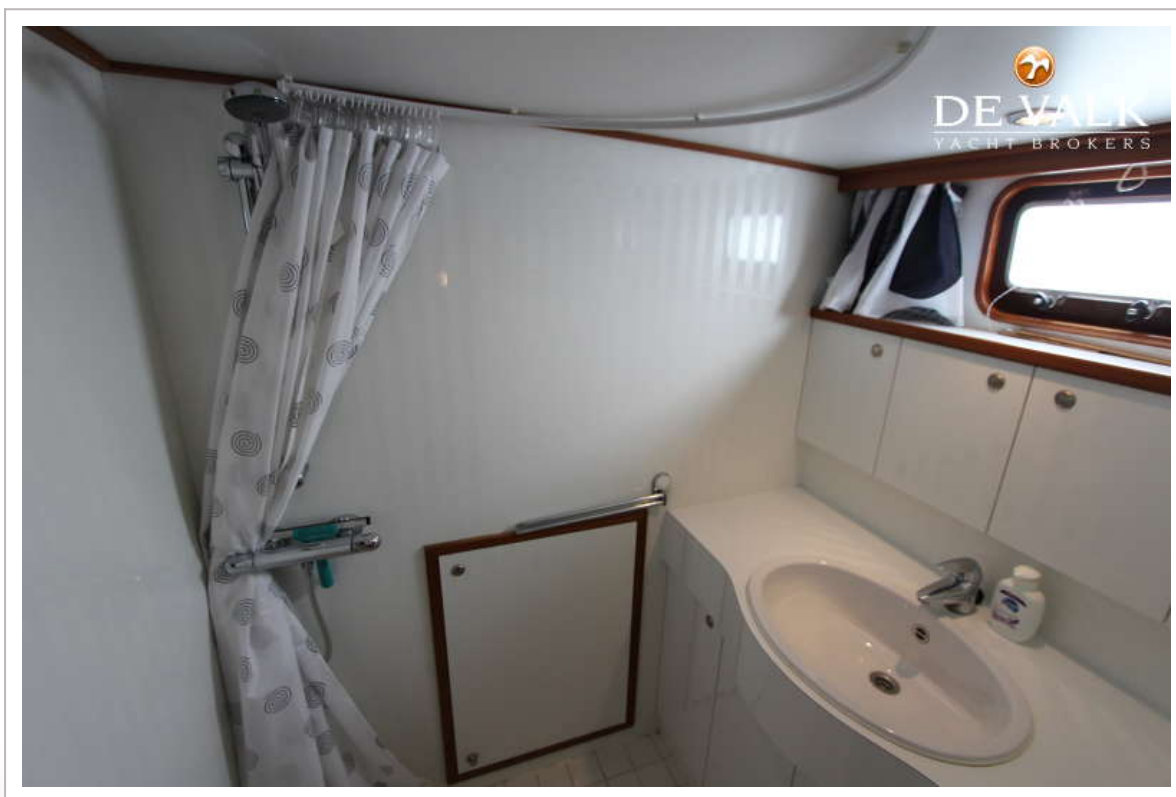
LINDEN KOTTER 13.70 AK



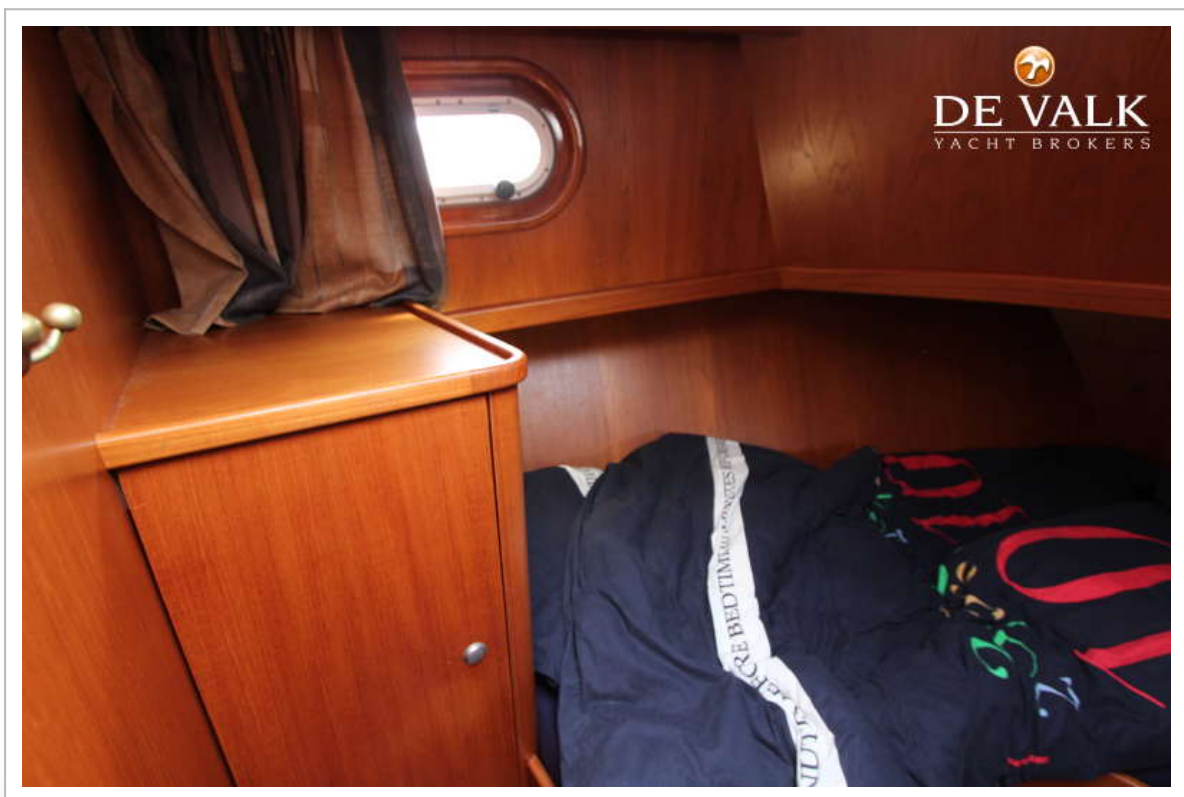
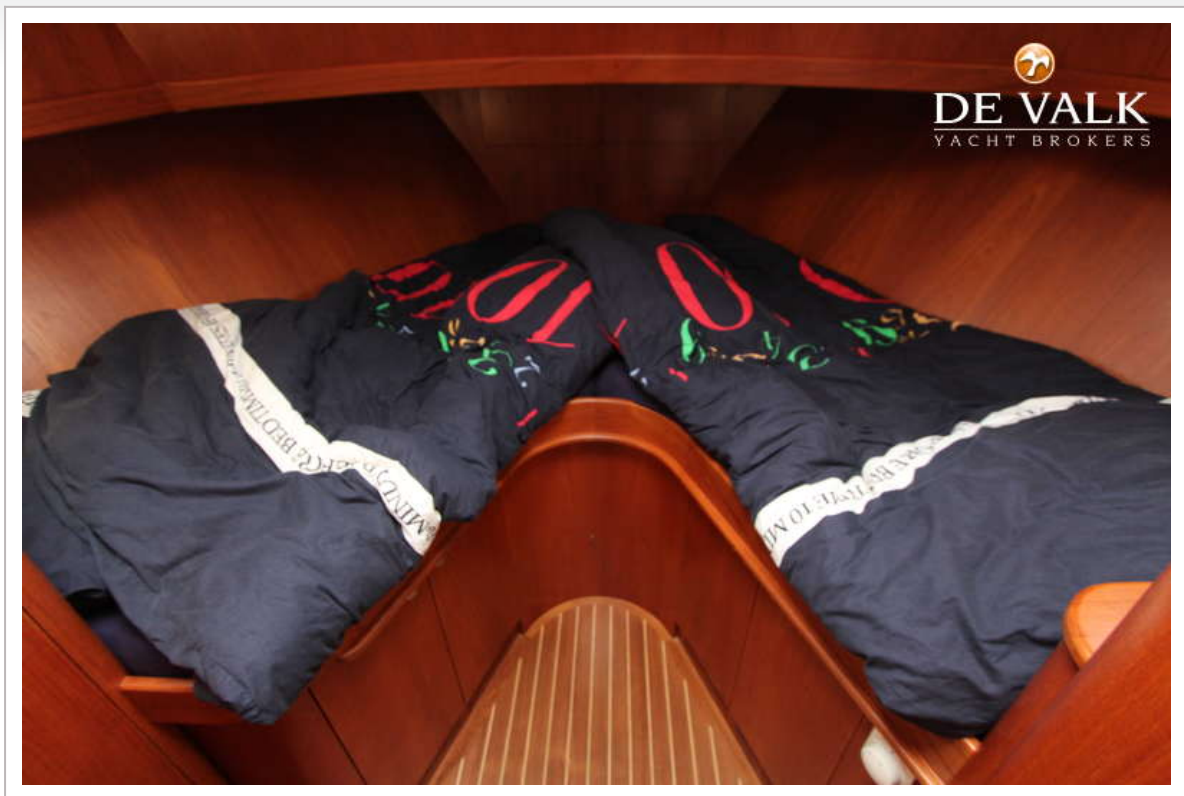
LINDEN KOTTER 13.70 AK



LINDEN KOTTER 13.70 AK



LINDEN KOTTER 13.70 AK



LINDEN KOTTER 13.70 AK

