



## X-YACHTS XC 42



# X-YACHTS XC 42

## BROKER'S COMMENTS

Innovative, fast, stylish, reliable and oh so comfortable.... the X-Yachts Xc-42 from Niels Jeppesen in a nutshell. Upon introduction the X-Yachts design team hit the mark on every aspect with this now much appreciated design. Taking all the best from their regatta performance and throwing safe long distance sailing parameters in the mix, it was no surprise the Xc-series have won many international professional awards. This Xc-42 comes very well equipped, is a dream to handle on both engine and while sailing and offers you the best in the performance cruising market.

*Marc Weijenberg*

## SPECIFICATIONS

<b>Dimensions</b>	12.81 x 4.10 x 2.10 (m)	<b>Builder</b>	X-Yachts
<b>Built</b>	2009	<b>Cabins</b>	3
<b>Material</b>	GRP	<b>Berths</b>	6
<b>Engine(s)</b>	1 x Volvo Penta D2-75 diesel	<b>Hp/Kw</b>	75.00 (hp), 55.13 (kw)
<b>Asking price</b>	sold (VAT )	<b>Lying</b>	at sales office

## CONTACT

<b>Sales office</b>	De Valk Sint Annaland B.V.	<b>Telephone</b>	+31 (0)166 601 000
<b>Address</b>	Koelhuisweg 4 4697 RM Sint Annaland NL	<b>E-mail</b>	sintannaland@devalk.nl

## DISCLAIMER

These particulars are given in good faith as supplied but cannot be guaranteed.



## GENERAL

Model	X-YACHTS XC 42
Type	sailing yacht
LOA (m)	12,81
LWL (m)	11,47
Beam (m)	4,10
Draft (m)	2,10
Air draft (m)	21,00
Headroom (m)	1,94
Year built	2009
Launched	2010
Builder	X-Yachts
Country	Denmark
Designer	Niels Jeppesen
Displacement (t)	11,4
Ballast (tonnes)	cast iron and lead 4,98
CE norm	A
Hull material	GRP
Hull colour	white
Hull shape	round-bilged
Keel type	fin keel with bulb
Superstructure material	GRP
Deck material	GRP
Deck finish	teak
Superstructure deck finish	teak
Cockpit deck finish	teak
Antifouling (year)	2019
Dorades	2 x
Window frame	aluminium
Window material	polycarbonate
Deckhatch	Flush mounted



# X-YACHTS XC 42

<b>Portholes</b>	aluminium
<b>Fuel tank (litre)</b>	stainless steel 250
<b>Freshwater tank (litre)</b>	stainless steel 500
<b>Blackwater tank (litre)</b>	stainless steel 2 x 60
<b>Blackwater tank extraction</b>	deck extraction + uw line
<b>Wheel steering</b>	cable steering 2 x Jefa
<b>Emergency tiller</b>	yes
<b>Extra info</b>	Hot-galvanised laminated hull-rigging frame A
<b>Extra info</b>	Bow-frame stainless st with teak planking for A-sym spinnaker
<b>Extra info</b>	Epoxy hull protection

## ACCOMMODATION

<b>Cabins</b>	3
<b>Berths</b>	6
<b>Interior</b>	teak
<b>Floor</b>	teak and holly
<b>Saloon</b>	With extended sofa
<b>Headroom saloon (m)</b>	1,94
<b>Heating</b>	diesel ducted hot air Eberspaecher D5L
<b>Navigation center</b>	With chart table
<b>Aft Cabin</b>	2 x
<b>Dinette</b>	yes
<b>Galley</b>	yes
<b>Countertop</b>	corian
<b>Sink</b>	stainless steel 2 x
<b>Cooker</b>	electric Force 10 (220v)
<b>Oven</b>	Force 10
<b>Microwave</b>	Eno
<b>Fridge</b>	Isotherm 12v front + toploader
<b>Hot water system</b>	220V + engine Isotherm 40 ltr
<b>Water pressure system</b>	electrical



# X-YACHTS XC 42

Owners cabin	double bed
Bed length (m)	2,00 x 2,00
Wardrobe	hanging/drawers/shelves
Bathroom	en suite I
Toilet	en suite
Toilet system	electric Jabsco
Wash basin	at the toilet
Shower	en suite
Guest cabin 1	double bed
Bed length (m)	2,00 x 1,40
Wardrobe	hanging and shelves
Bathroom	shared II
Toilet	shared
Toilet system	electric Jabsco
Wash basin	in the bathroom
Shower	separate
Guest cabin 2	double bed
Bed length (m)	2,00 x 1,40
Wardrobe	hanging and shelves
Extra info	Teak bulkheads Halogen interior lighting LED night lighting
Extra info	Ocean Air blinds-screens for deckhatches

## MACHINERY

No of engines	1
Make	Volvo Penta
Type	D2-75
HP	75
kW	55,13
Fuel	diesel
Year installed	2009
Maximum speed (kn)	8



# X-YACHTS XC 42

Cruising speed (kn)	7
Consumption (l/hr)	3
Engine hours	1300
Engine cooling system	freshwater heat exchanger
Drive	sail-drive
Saildrive seal	(2009)
Engine controls	bowden cable
Gearbox	Volvo Penta
Bowthruster	electric Maxpower 85kgf (retractable)
Exhaust	watercooled
Propeller type	folding
Propeller blades	3
Manual bilge pump	1 x
Electric bilge pump	1 x
Electrical installation	12/220v
Generator	silent separator Fisher Panda 4000i
Start battery	1 x (2018)
Service battery	7 x 130ah AGM (2010)
Battery monitor	Victron
Battery charger/inverter	Victron 12v/3000/120amp
Diode battery combiners	yes
Shorepower	with cable
Extra info	5 x 220v sockets 12v DC sockets
Extra info	Victron remote for inverter/genset/charger

## NAVIGATION

Compass	Suunto
Electric compass	Raymarine via autopilot
Depth sounder	Raymarine ST290
Log	Raymarine ST290
Windset	Raymarine ST290



<b>Repeater</b>	Raymarine ST70 at chart table
<b>VHF</b>	Raymarine 240 + handset for cockpit
<b>Autopilot</b>	Raymarine S3G
<b>Rudder angle indicator</b>	Raymarine via autopilot
<b>Radar</b>	Raymarine RD424 HD
<b>GPS</b>	Raymarine Raystar 125
<b>Plotter</b>	Raymarine E80 in cockpit
<b>Personal computer</b>	+ Raytech RNS6.2 software + 16" display
<b>Wifi antenna</b>	yes
<b>Electronic chart(s)</b>	yes
<b>AIS transponder</b>	Raymarine AIS500 - Class B
<b>EPIRB</b>	ACR RLBN-37 valid till 04-2021
<b>Navigation lights</b>	LED + 3 color masthead

## EQUIPMENT

<b>Fixed windscreen</b>	With toughened glass
<b>Sprayhood with grab rail</b>	(2017)
<b>Cockpit cushions</b>	yes
<b>Cockpit table</b>	yes
<b>Bathing platform</b>	Foldable electric
<b>Boarding ladder</b>	stainless steel
<b>Transom door</b>	yes
<b>Deck shower</b>	Hot + cold
<b>Anchor</b>	Delta 20kg
<b>Anchor chain</b>	80 mtr
<b>Windlass</b>	electrical Quick 12v/1500 watt
<b>Windlass aft</b>	electrical + Bruce anchor/50mtr line
<b>Sea railing</b>	wire
<b>Grab rail (superstructure)</b>	stainless steel
<b>Railing side opening gates</b>	2 x
<b>Pushpit</b>	yes



<b>Pulpit</b>	yes
<b>Life raft</b>	valise (or bag) Plastimo Transocean
<b>Life raft (pers)</b>	6 x
<b>Last life raft survey</b>	2019
<b>Lifejackets</b>	6 x
<b>Safety harness</b>	yes
<b>Lifebuoy</b>	yes
<b>Safety lines on deck</b>	yes
<b>Radar reflector</b>	Echomax ActiveX (12v)
<b>Fenders</b>	yes
<b>Mooring lines</b>	yes
<b>Spare parts</b>	yes
<b>Tools</b>	yes
<b>TV</b>	JVC 19"
<b>Radio-cd player</b>	Fusion AV700i MP3/Bluetooth/etc
<b>Cockpit speakers</b>	2 x Bose
<b>Speakers in salon</b>	2 x
<b>Clock - barometer</b>	No
<b>Fire extinguisher</b>	4 x
<b>Latest extinguisher survey</b>	(2013)

## RIGGING

<b>Rigging</b>	sloop
<b>Standing rigging</b>	(2017)
<b>Brand mast</b>	John mast (2017)
<b>Material mast</b>	aluminium
<b>Spreaders</b>	2 x set
<b>Keel stepped mast</b>	yes
<b>Mainsail cover</b>	+ Lazy Jacks
<b>Battcars</b>	Ronstan with track on mast
<b>Fully battened mainsail</b>	Elvstrom Epex/Vectron (2017) double Taffeta 22.000DPI





<b>Jib</b>	Elvstrom Epex/Vectran 2017 double Taffeta 25.000DPI + UV strip
<b>Genoa furler</b>	Profurl (2017)
<b>Stormjib</b>	Elvstrom (2010)
<b>Reefing System</b>	slabreefing
<b>Backstay adjuster</b>	hydraulic Harken
<b>Boomvang</b>	mechanical
<b>Primary sheet winch</b>	2 x Andersen 46ST
<b>Genoa sheetwinches</b>	2 x Andersen 58ST
<b>Halyard winches</b>	1 x Andersen 46STE electric
<b>Reefing winch</b>	1 x Andersen 46ST
<b>Extra info</b>	A-sym spinnaker equipment German mainsheet system
<b>Extra info</b>	Spinnaker pole on mast 4 foldable mast steps



## X-YACHTS XC 42



## X-YACHTS XC 42

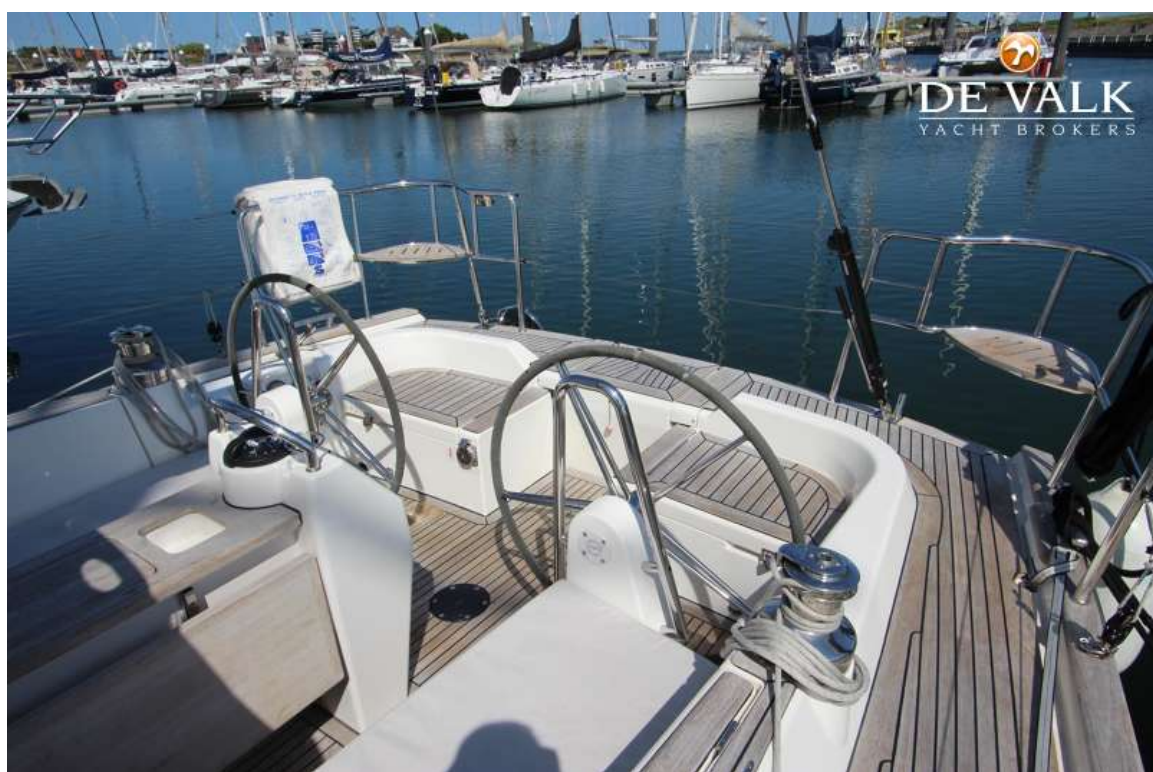




## X-YACHTS XC 42



## X-YACHTS XC 42





## X-YACHTS XC 42

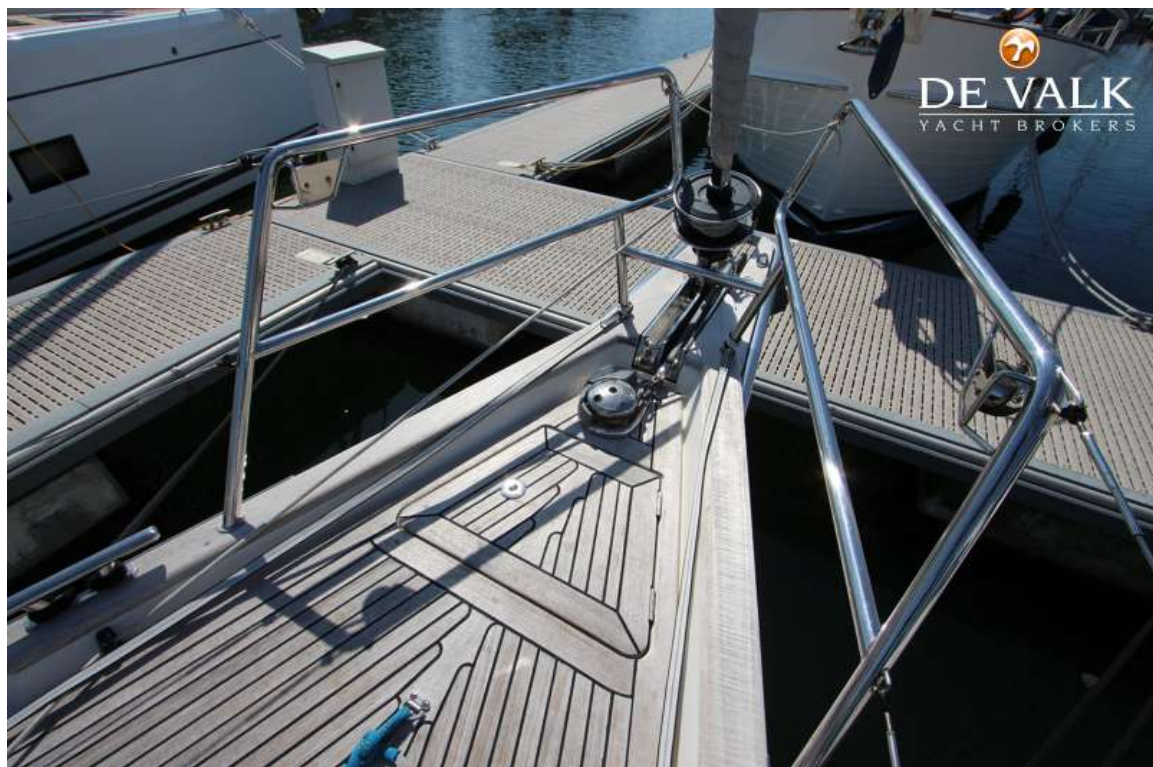




## X-YACHTS XC 42

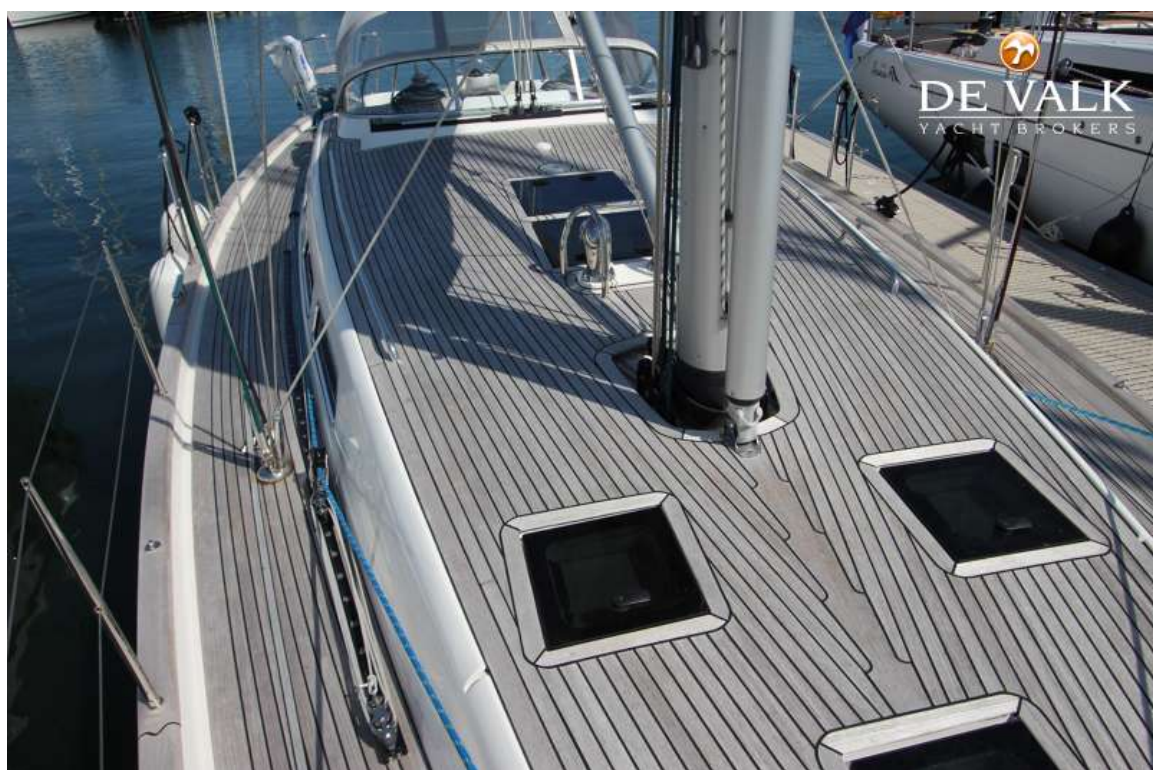


## X-YACHTS XC 42





## X-YACHTS XC 42





## X-YACHTS XC 42



## X-YACHTS XC 42





## X-YACHTS XC 42

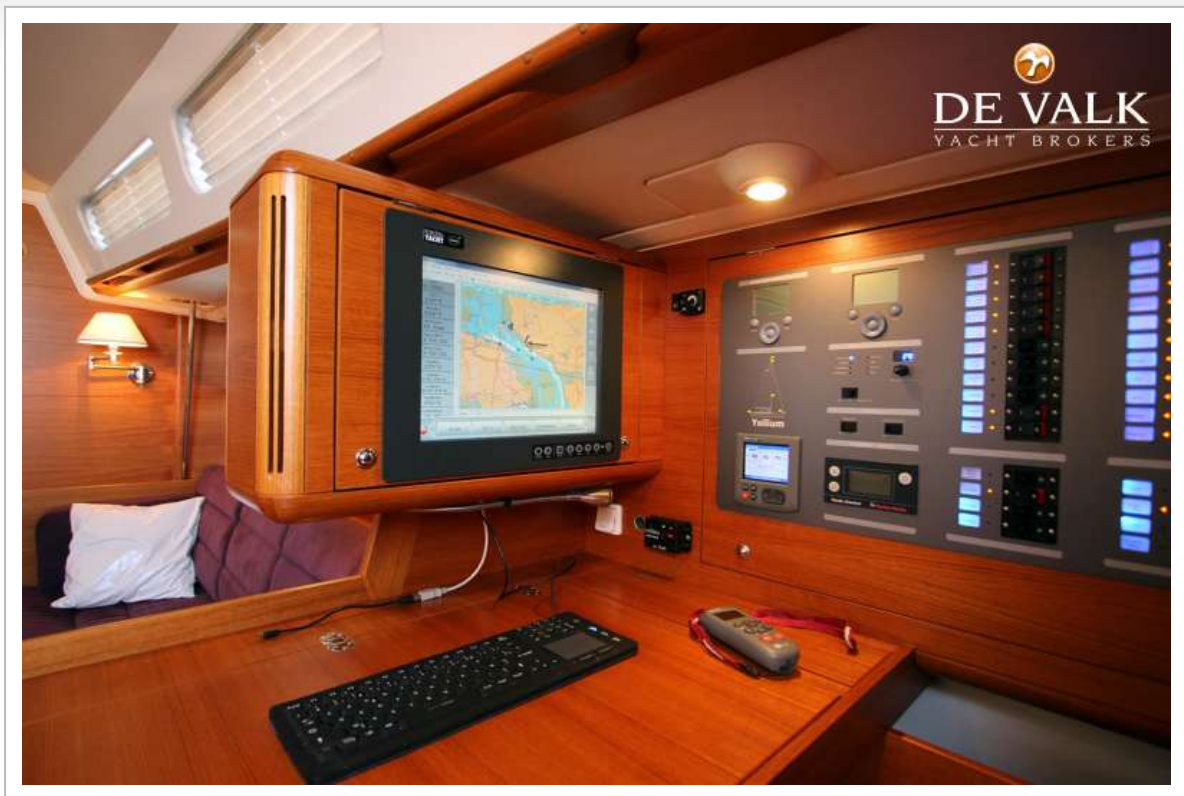


## X-YACHTS XC 42





## X-YACHTS XC 42



## X-YACHTS XC 42



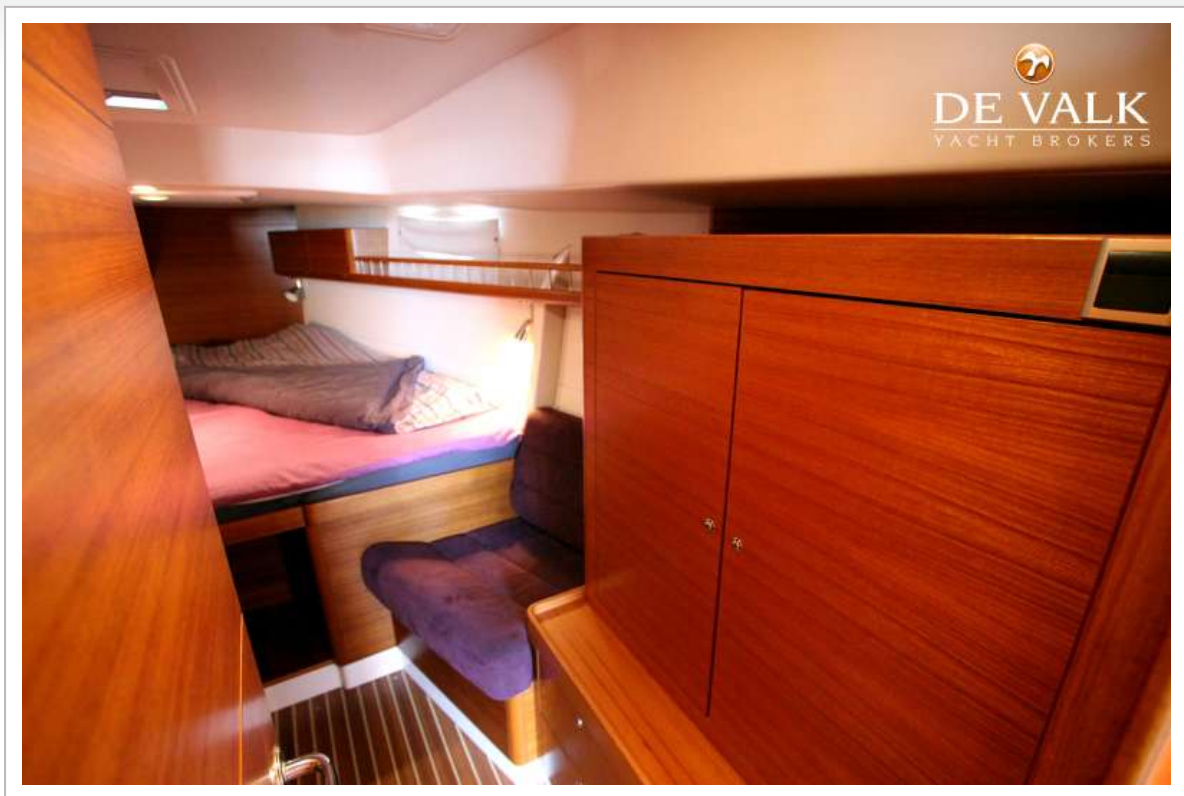


## X-YACHTS XC 42





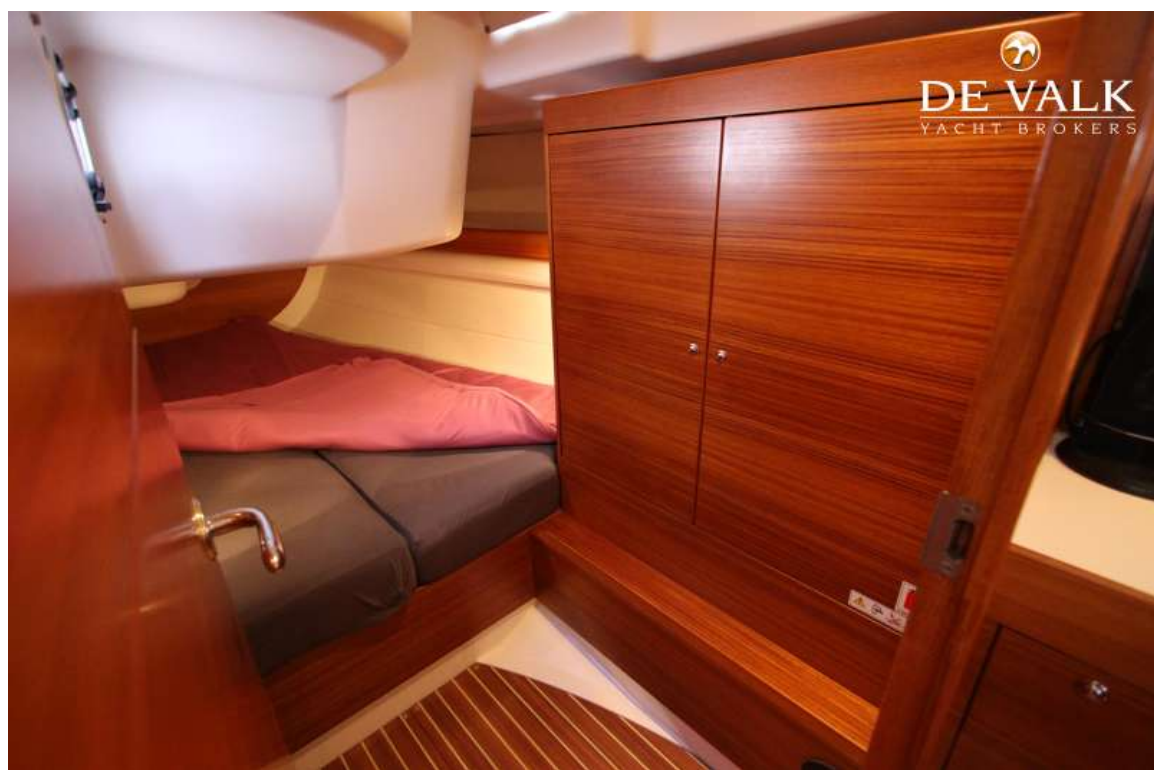
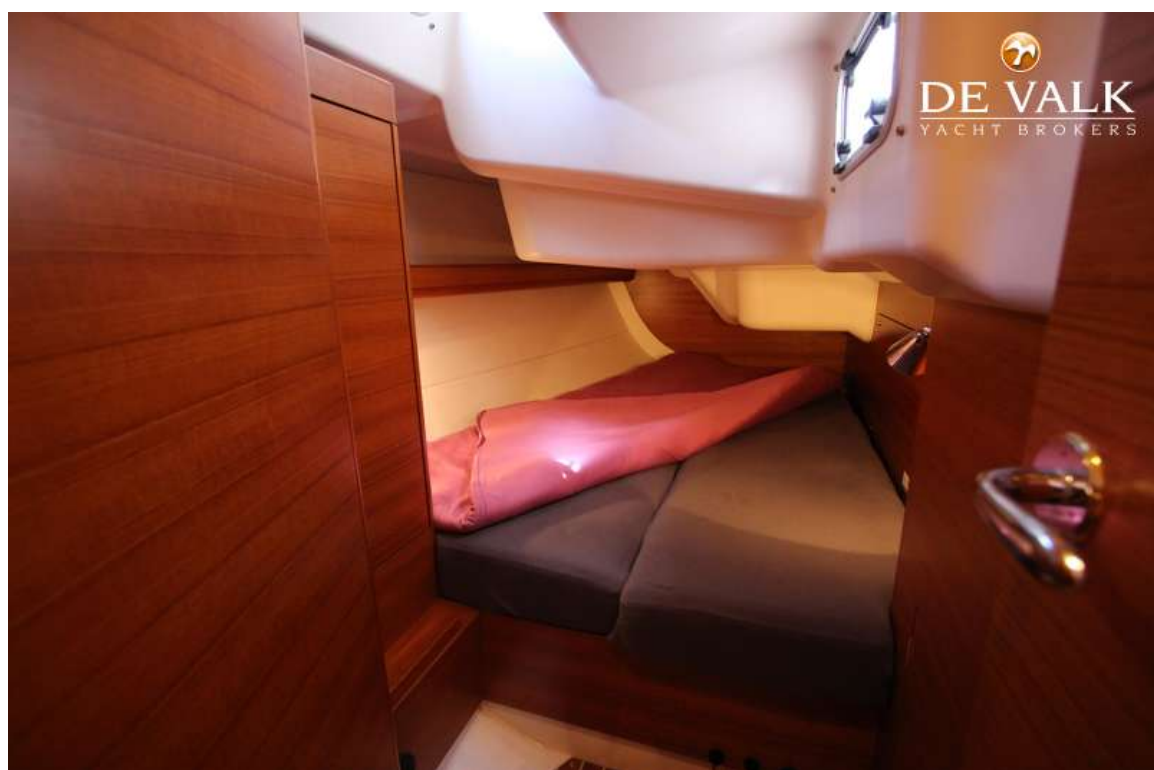
## X-YACHTS XC 42



## X-YACHTS XC 42



## X-YACHTS XC 42

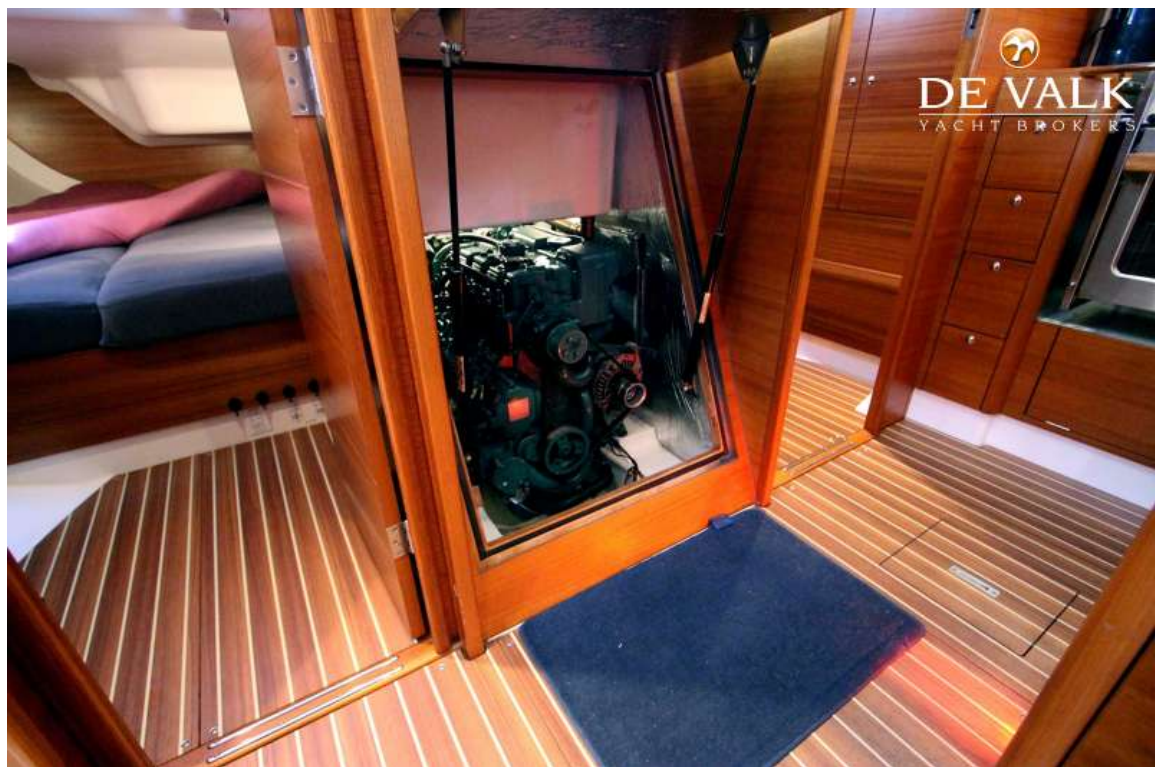




## X-YACHTS XC 42



## X-YACHTS XC 42



## X-YACHTS XC 42

