



NIDELV 33 CLASSIC

NIDELV 33 CLASSIC

BROKER'S COMMENTS

The Nidelv 33 Classic 33 "Archer" was built in 2006 at Nidelv boats in Norway and has 6 sleeping places in two cabins and a folding bed in the salon. The boat is equipped with a Yanmar 75 Hp diesel engine, Vetus electric bow thruster and Sydpower stern thruster. This Nidelv 33 Classic is in super condition and looks like new. She can be viewed in our covered sales harbor in Sneek

Peter Spruyt

SPECIFICATIONS

Dimensions	10.40 x 3.30 x 0.90 (m)	Builder	Zaadnoordijk Heerenveen
Built	2006	Cabins	2
Material	GRP	Berths	6
Engine(s)	1 x Yanmar 4JH4-TE diesel	Hp/Kw	75.00 (hp), 55.13 (kw)
Asking price	sold (VAT)	Lying	at sales office

CONTACT

Sales office	De Valk Sneek	Telephone	+31 (0)515 42 80 30
Address	Zwolsmanweg 7 8606 KC Sneek NL	E-mail	sneek@devalk.nl

DISCLAIMER

These particulars are given in good faith as supplied but cannot be guaranteed.



NIDELV 33 CLASSIC

GENERAL

Model	NIDELV 33 CLASSIC
Type	motor yacht
LOA (m)	10,40
Beam (m)	3,30
Draft (m)	0,90
Air draft (m)	2,70
Air draft min (m)	2,53
Headroom (m)	1,95
Year built	2006
Builder	Zaadnoordijk Heerenveen
Country	The Netherlands
Designer	Vripack
Displacement (t)	7
CE norm	C
Hull material	GRP
Hull colour	off-white
Hull shape	round-bilged
Keel type	box keel
Superstructure material	GRP
Rubbing strake	rubber
Deck material	GRP
Dorades	3x
Window frame	aluminium
Window material	glass
Mast can be lowered	manual
Fuel tank (litre)	480 l.
Level indicator (fuel tank)	yes
Freshwater tank (litre)	225 l.
Level indicator (freshwater)	yes
Blackwater tank (litre)	122 l.



NIDELV 33 CLASSIC

Wheel steering	hydraulic
Inside helm position	yes
Emergency tiller	yes

ACCOMMODATION

Cabins	2
Berths	6
Interior	teak
Floor	teak and holly
Headroom saloon (m)	1.95 m.
Heating	diesel ducted hot air Webasto
Dinette to convert into berth	U-settee in saloon convertible into double bed
Opening door to cockpit	yes
Opening door to aft deck	yes
Galley	yes
Countertop	corian
Sink	stainless steel
Cooker	diesel 2-burner
Fridge	Waeco 65 l.
Freezer	yes
Hot water system	220V + engine Boiler 40 l.
Water pressure system	electrical
Owners cabin	French bed
Wardrobe	hanging and shelves
Toilet	shared
Toilet system	electric Tecma
Wash basin	at the toilet
Shower	shared
Guest cabin 1	twin single

MACHINERY



NIDELV 33 CLASSIC

No of engines	1
Make	Yanmar
Type	4JH4-TE
HP	75,00
kW	55,13
Fuel	diesel
Year installed	2006
Engine hours	1292
Engine cooling system	freshwater heat exchanger
Drive	shaft
Engine controls	bowden cable
Gearbox	hydraulic
Bowthruster	electric Sidepower 2018 + remote control
Sternthruster	electric Vetus 55 kgf + remote control
Propeller type	fixed
Propeller shaft material	stainless steel
Shaft lubrication	water
Manual bilge pump	yes
Electric bilge pump	yes
Electrical installation	12/220 Volt
Start battery	1x Optima 50 Amp
Service battery	3x 110 Amp (2019)
Bowthruster battery	1x 66 Amp
Battery charger	Mastervolt
Shorepower	with cable

NAVIGATION

Navigation lights	yes
-------------------	-----

EQUIPMENT

Cockpit cover	2018
---------------	------



NIDELV 33 CLASSIC

Bathing platform	yes
Boarding ladder	stainless steel
Deck shower	yes
Anchor	Umbrella anchor
Anchor chain	yes
Sea railing	stainless steel
Wiper	3x
Window heating	yes
Horn	electric
Fenders	yes
Mooring lines	yes
Alarm system	carbon monoxide detector
Fire extinguisher	yes



NIDELV 33 CLASSIC



NIDELV 33 CLASSIC



NIDELV 33 CLASSIC



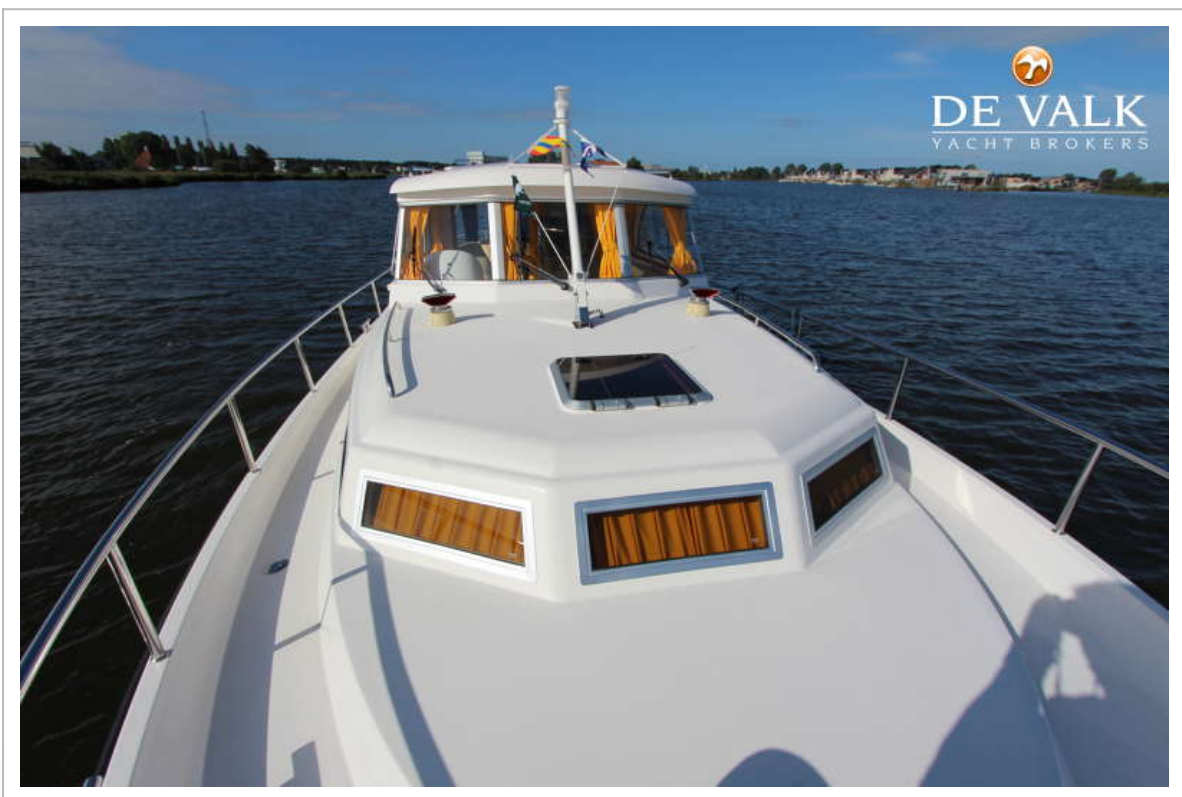
NIDELV 33 CLASSIC



NIDELV 33 CLASSIC



NIDELV 33 CLASSIC



NIDELV 33 CLASSIC



NIDELV 33 CLASSIC



NIDELV 33 CLASSIC



NIDELV 33 CLASSIC



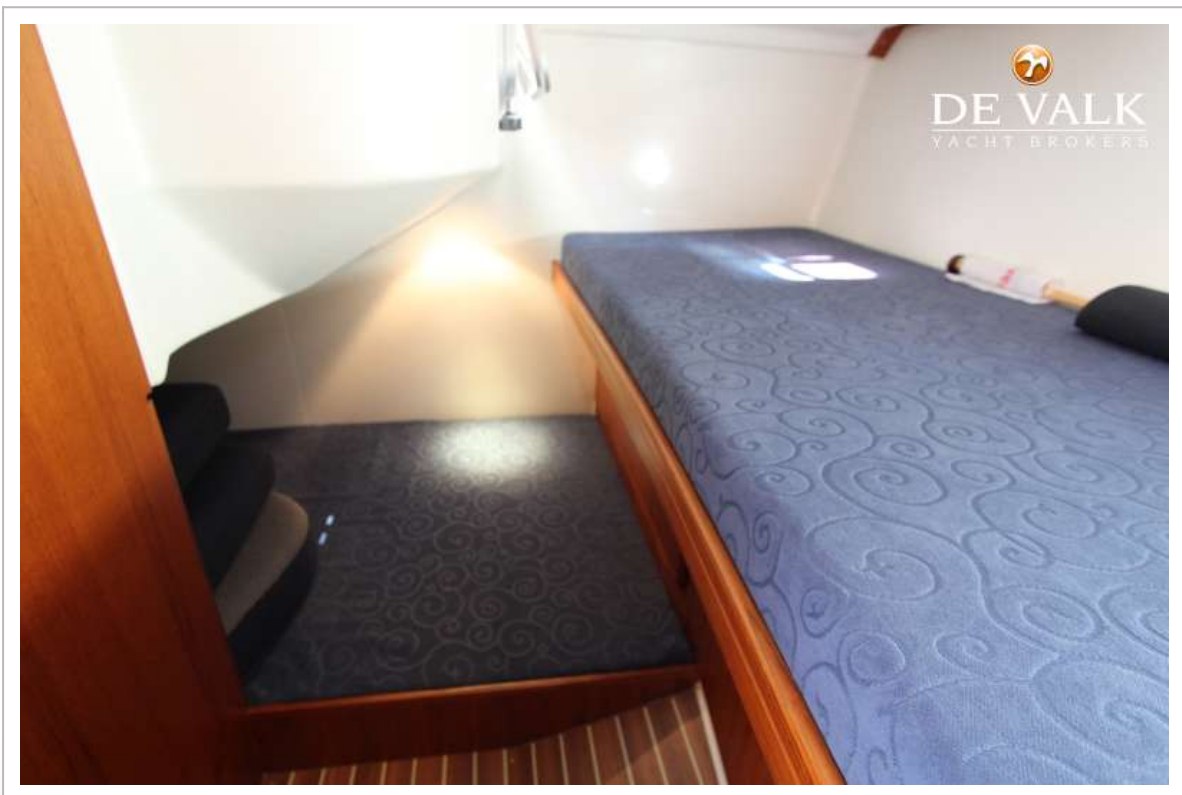
NIDELV 33 CLASSIC



NIDELV 33 CLASSIC



NIDELV 33 CLASSIC



NIDELV 33 CLASSIC

