



## VRIPACK 46 AC

## BROKER'S COMMENTS

"Meander" is a steel motor yacht, designed by Vripack Yacht Design Sneek and built to the highest standards. A motor yacht that is equipped with all conveniences and comfort such as central heating, air conditioning, double glazing, inside and outside steering, three cabins with six berths and two bathrooms... actually too many to mention. You must see and experience this Vripack 46 AC. Enthusiastic? Make an appointment with our location in Sneek now to admire Meander with your own eyes.

*Henk de Vries*

## SPECIFICATIONS

<b>Dimensions</b>	13.89 x 4.32 x 1.35 (m)	<b>Builder</b>	Peters Shipyard Kampen
<b>Built</b>	2014	<b>Cabins</b>	3
<b>Material</b>	Steel	<b>Berths</b>	6
<b>Engine(s)</b>	1 x Vetus Deutz DET66E422E diesel	<b>Hp/Kw</b>	170.00 (hp), 124.95 (kw)
<b>Asking price</b>	sold (VAT )	<b>Lying</b>	at sales office

## CONTACT

<b>Sales office</b>	De Valk Sneek	<b>Telephone</b>	+31 (0)515 42 80 30
<b>Address</b>	Zwolsmanweg 7 8606 KC Sneek NL	<b>E-mail</b>	sneek@devalk.nl

## DISCLAIMER

These particulars are given in good faith as supplied but cannot be guaranteed.



## GENERAL

Model	VRIPACK 46 AC
Type	motor yacht
LOA (m)	13,89
LWL (m)	12,14
Beam (m)	4,32
Draft (m)	1,35
Air draft (m)	3,10
Headroom (m)	2,00
Year built	2014
Builder	Peters Shipyard Kampen
Country	The Netherlands
Designer	Vripack Naval Architecture
Displacement (t)	26
CE norm	B
Hull material	steel
Hull colour	AquaBlue metallic (Alexseal)
Hull thickness (mm)	5 mm
Hull shape	multi hard chine
Keel type	long keel
Superstructure material	aluminium
Superstructure (mm)	4 mm
Rubbing strake	stainless steel
Deck material	steel
Deck finish	teak
Superstructure deck finish	paint
Cockpit deck finish	paint
Antifouling (year)	2021
Dorades	mechanical ventilation
Window frame	Geïntegreerd in de opbouw
Window material	double glazing Tempered safety glass & front windows are heated



Deckhatch	electric in saloon in the front cabin flat in the deck (hb) Webasto
Portholes	stainless steel Incl. screens
Insulation	50 mm Isover Ultimate MPH36
Radar arch	collapsible Hydraulic
Fuel tank (litre)	steel 500 l.
Fuel tank 2 (litre)	steel 500 l.
Level indicator (fuel tank)	yes
Freshwater tank (litre)	polyethylene 2 tanks: 345 l. & 265 l.
Level indicator (freshwater)	yes
Blackwater tank (litre)	polyethylene 180 l.
Level indicator (blackwater)	yes
Blackwater tank extraction	deck extraction + pump
Greywater tank (litre)	polyethylene 600 l.
Level indicator (greywater)	yes
Wheel steering	hydraulic ProDock manoeuvring system
Inside helm position	yes
Outside helm position	yes
Emergency tiller	yes
Extra info	Qblinds window decoration & blinds
Extra info	Panoramaraam op het bovendek

## ACCOMMODATION

Cabins	3
Berths	6
Interior	bambo Light color
Floor	carpet Parket &
Aft deck	2x
Saloon	yes
Headroom saloon (m)	1.90 m.
Sliding roof	electric
Heating	central heating Webasto in saloon



Heating 2	Webasto fan coils in all cabins & saloon
Air-conditioning	reverse cycle airco Webasto Blue Cool 32, fan coils in all cabins & saloon
Aft Cabin	2x
Galley	yes
Countertop	corian
Sink	stainless steel Incl. Quooker
Cooker	induction Bauknecht 3-burner
Extractor	Atag
Microwave/oven combi	Siemens Compact
Fridge	Liebherr 120 l.
Freezer	In fridge
Hot water system	220V + engine Boiler 75 l.
Water pressure system	electrical
Hot water tap	Quooker 100 degree tap
Owners cabin	French bed
Bed length (m)	2.00 m.
Wardrobe	drawers and shelves
Bathroom	en suite
Toilet	en suite
Toilet system	electric
Wash basin	at the toilet
Shower	en suite
Guest cabin 1	double bed
Bed length (m)	1,90 m.
Wardrobe	hanging and shelves
Bathroom	shared
Toilet	shared
Toilet system	electric
Wash basin	in the bathroom
Shower	shared
Guest cabin 2	bunk bed



Bed length (m)	2.00 m.
Wardrobe	hanging/drawers/shelves
Bathroom	shared
Toilet	shared
Washing machine/dryer combi	Miele WT 2780WPM

## MACHINERY

No of engines	1
Make	Vetus Deutz
Type	DET66E422E
HP	170
kW	124,95
Fuel	diesel
Year installed	2013
Maximum speed (kn)	9
Cruising speed (kn)	8
Engine hours	Ca.680
Engine cooling system	freshwater heat exchanger
Drive	shaft
Engine controls	electrical Vetus
Gearbox	ZF45 2,2:1 with trolingvalve & ProDock
Bowthruster	hydraulic Vetus 95 Kgf
Sternthruster	hydraulic Vetus 95 Kgf
Exhaust	watercooled
Thrust bearing	Python-Drive 140-500 (2017)
Propeller type	fixed
Propeller blades	5-bladed / 60 cm
Propeller shaft material	stainless steel Exalto
Shaft lubrication	water
Electric bilge pump	3x
Bilge alarm	yes



<b>Electrical installation</b>	El-Tec, PLC control system
<b>Generator</b>	wet exhaust WhisperGen SQ8/8Kva
<b>Generator 2</b>	2e Dynamo Bosch 24V 80A
<b>Start battery</b>	2x Optima 12V / 50Ah (2018)
<b>Service battery</b>	12x 2V / 580Ah ( 2019)
<b>Generator battery</b>	1x Mastervolt MF130 12V / 130Ah (2020)
<b>Battery monitor</b>	Mastervolt BTM III
<b>Battery charger</b>	Mastervolt 12V 20A for the generator
<b>Battery charger/inverter</b>	Victron Quatro 5000W / 24V / 120A
<b>Shorepower</b>	with cable

## NAVIGATION

<b>Electric compass</b>	via multi system, Furuno Navnet 3D, Black Box
<b>Multi control display</b>	yes
<b>Depth sounder</b>	via multi system
<b>Log</b>	via multi system
<b>Fish finder</b>	via multi system
<b>VHF</b>	Furuno with DSC
<b>Autopilot</b>	via multi system
<b>Rudder angle indicator</b>	via multi system
<b>Radar/GPS/plotter</b>	Furuno NavNet 3D on both displays
<b>Weather receiver</b>	via multi system
<b>Electronic chart(s)</b>	via multi system with satellite photos
<b>Camera</b>	yes
<b>Navigation lights</b>	yes
<b>Extra info</b>	inside and outside steering position with multi display 20x30 cm

## EQUIPMENT

<b>Fixed windscreen</b>	yes
<b>Sprayhood</b>	yes
<b>Bimini</b>	yes



Cockpit cushions	Sunbrella matt covers
Cockpit table	with cover
Bathing platform	yes
Boarding ladder	stainless steel
Deck shower	hot & cold
Anchor	Pool RVS316, 40kg
Anchor chain	RVS 50 m. incl.powerball (2020)
Windlass	hydraulic Maxwell
Capstan	yes
Deck wash	on foredeck with pressure pump
Sea railing	stainless steel
Grab rail (superstructure)	stainless steel
Railing side opening gates	yes
Wiper	3x with windscreen washers
Window heating	front windows Salon &
Horn	yes
Fenders	with fender baskets
Mooring lines	yes
Alarm system	fire & burglary
TV	Philips Smart LED TV met elektrische lift
TV receiver	DVB-T
DVD player	Dune Blu-Ray
iPod connection	yes
Surround Sound System	Marantz
Sub-woofer	yes
Speakers in salon	yes
Fire extinguisher	4x
Auto extinguisher system	yes

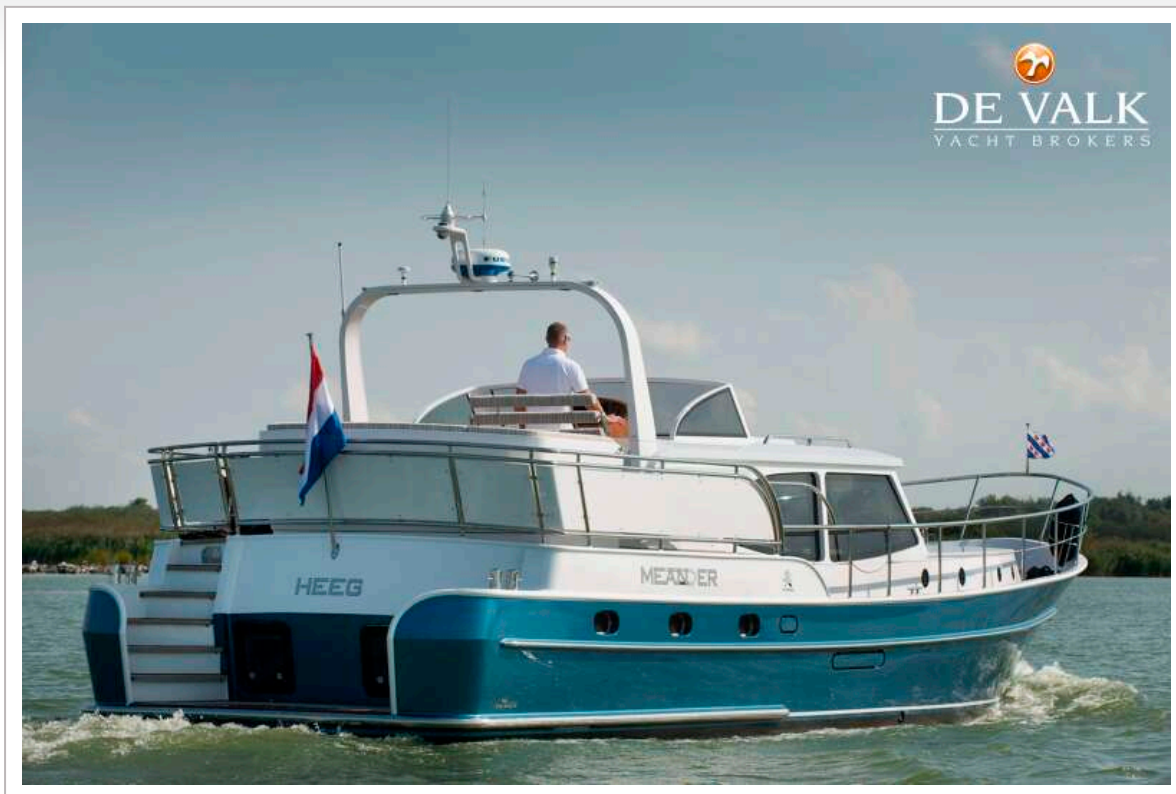






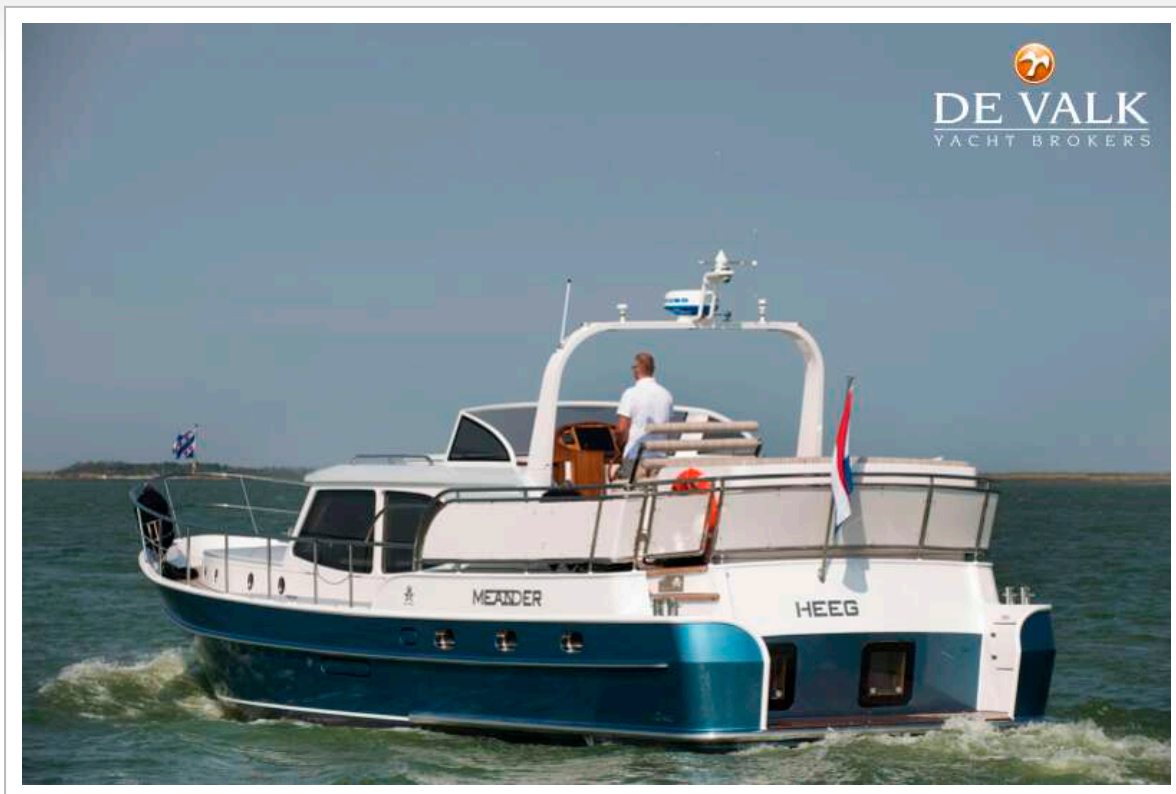


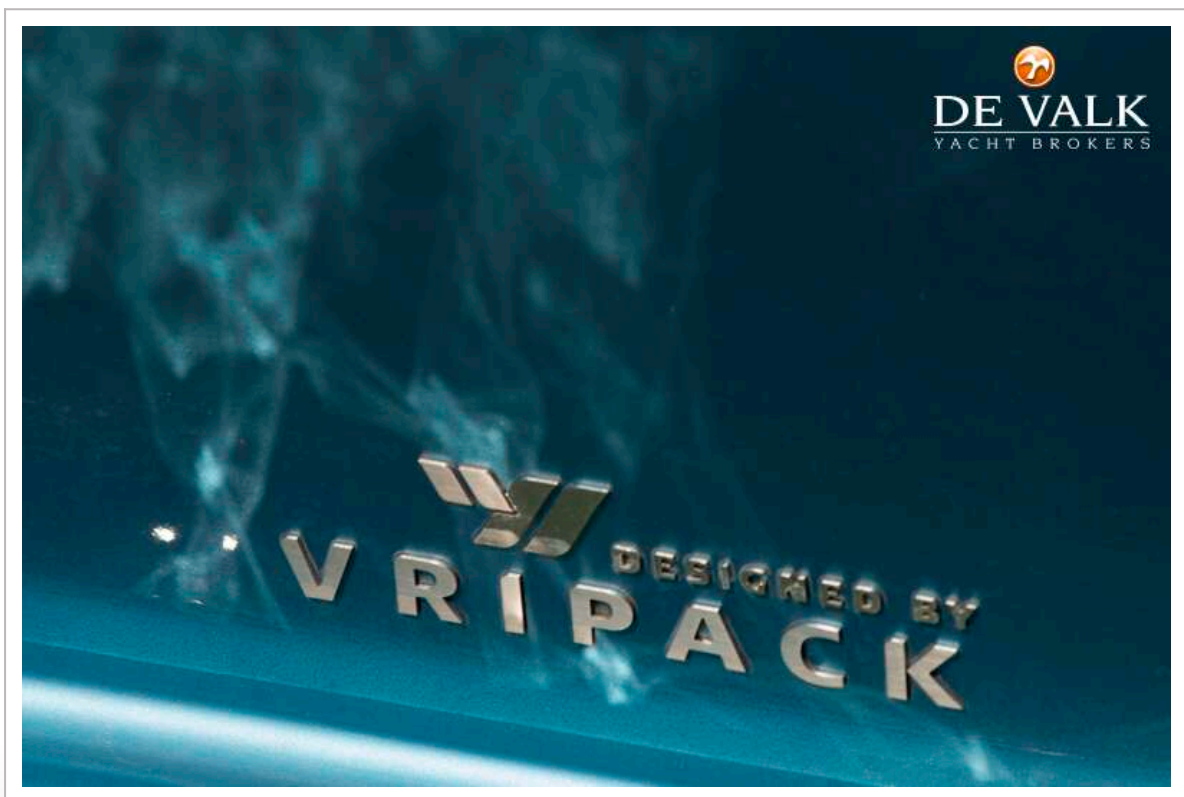
# VRIPACK 46 AC



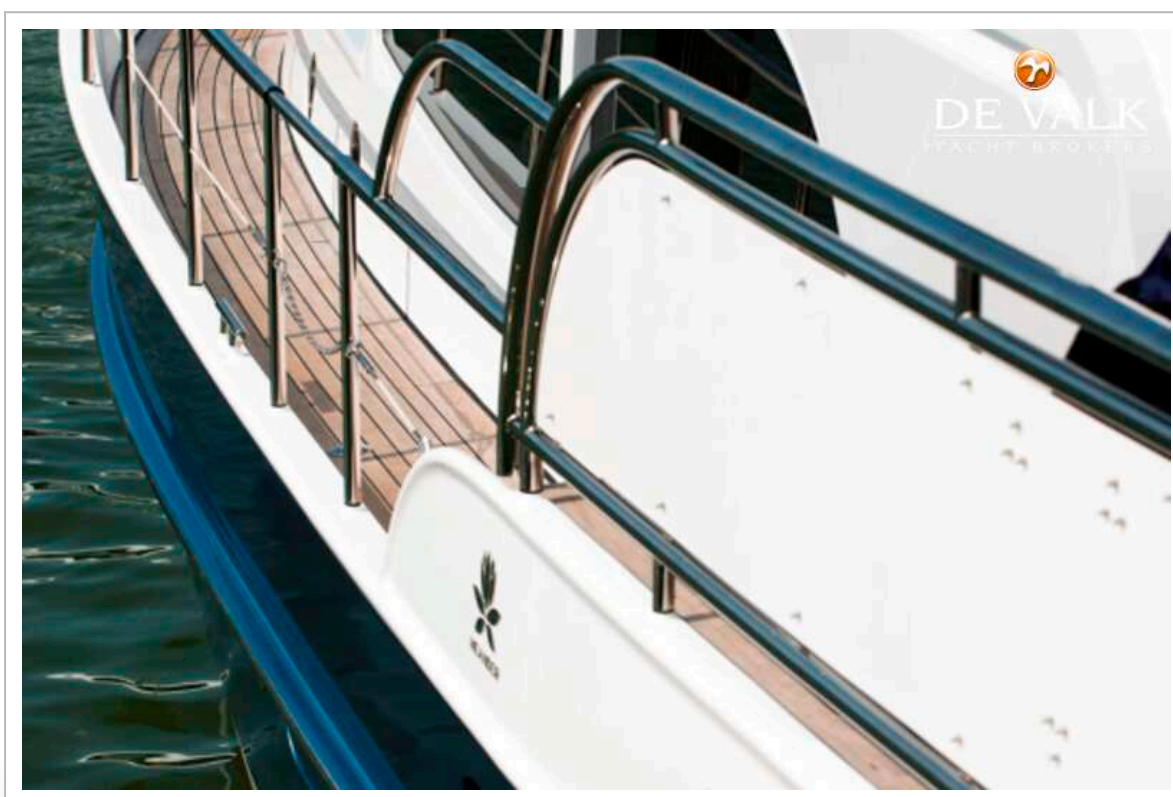
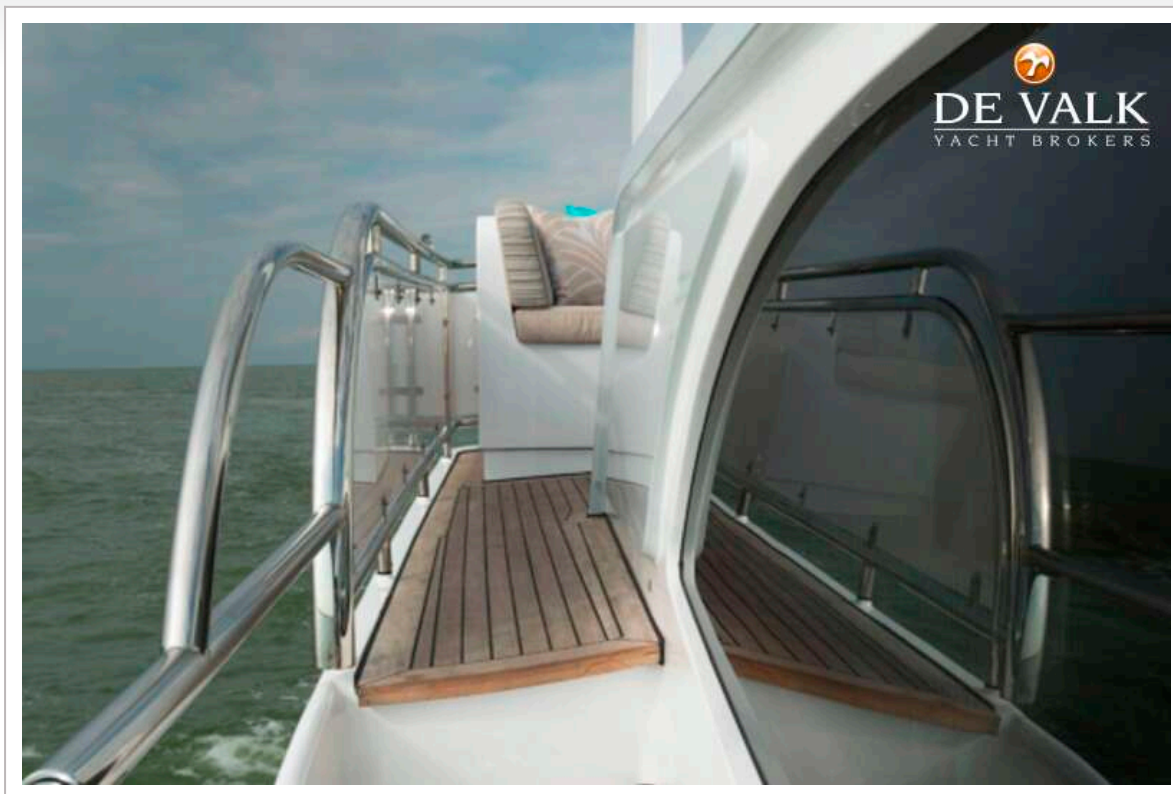


# VRIPACK 46 AC



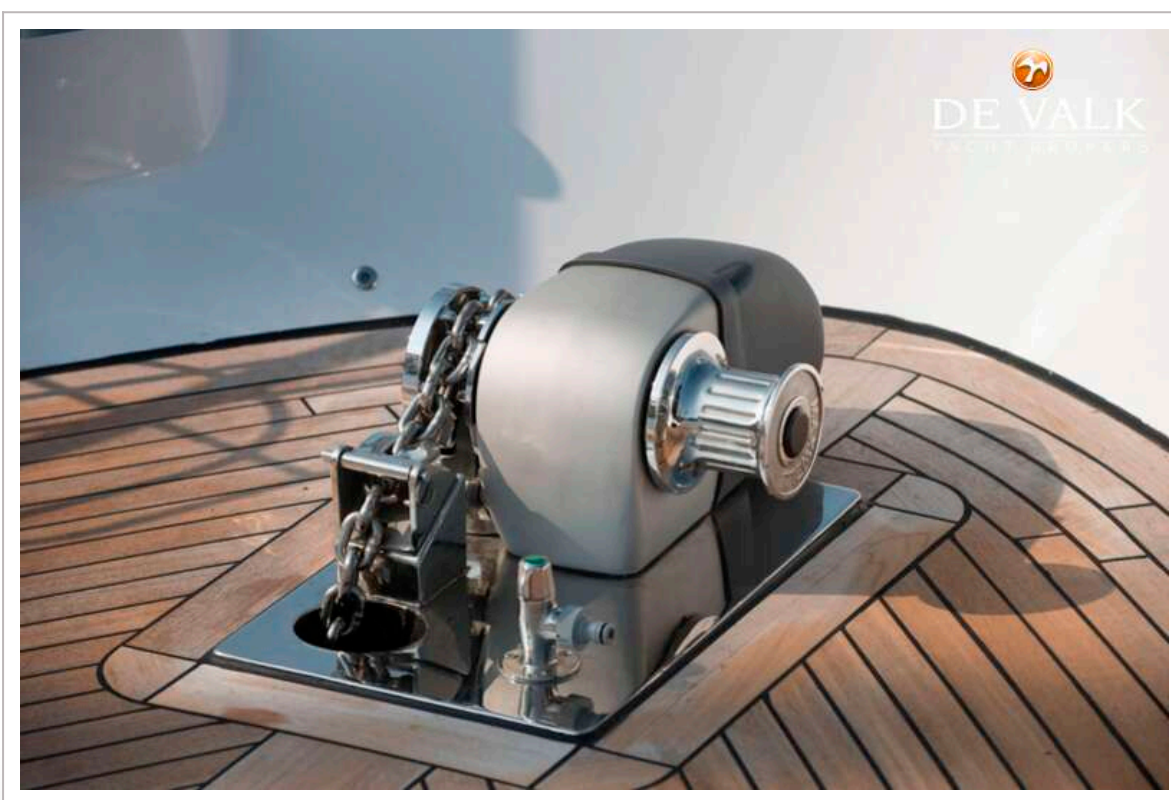
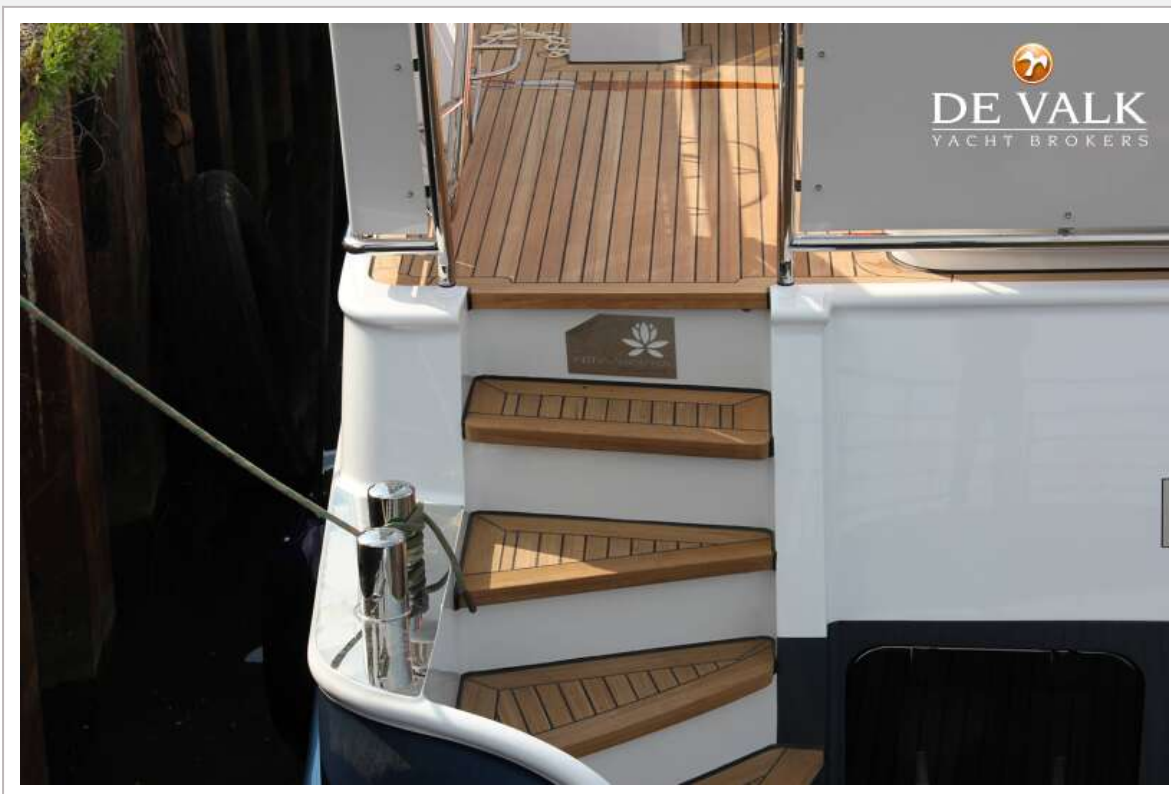


## VRIPACK 46 AC

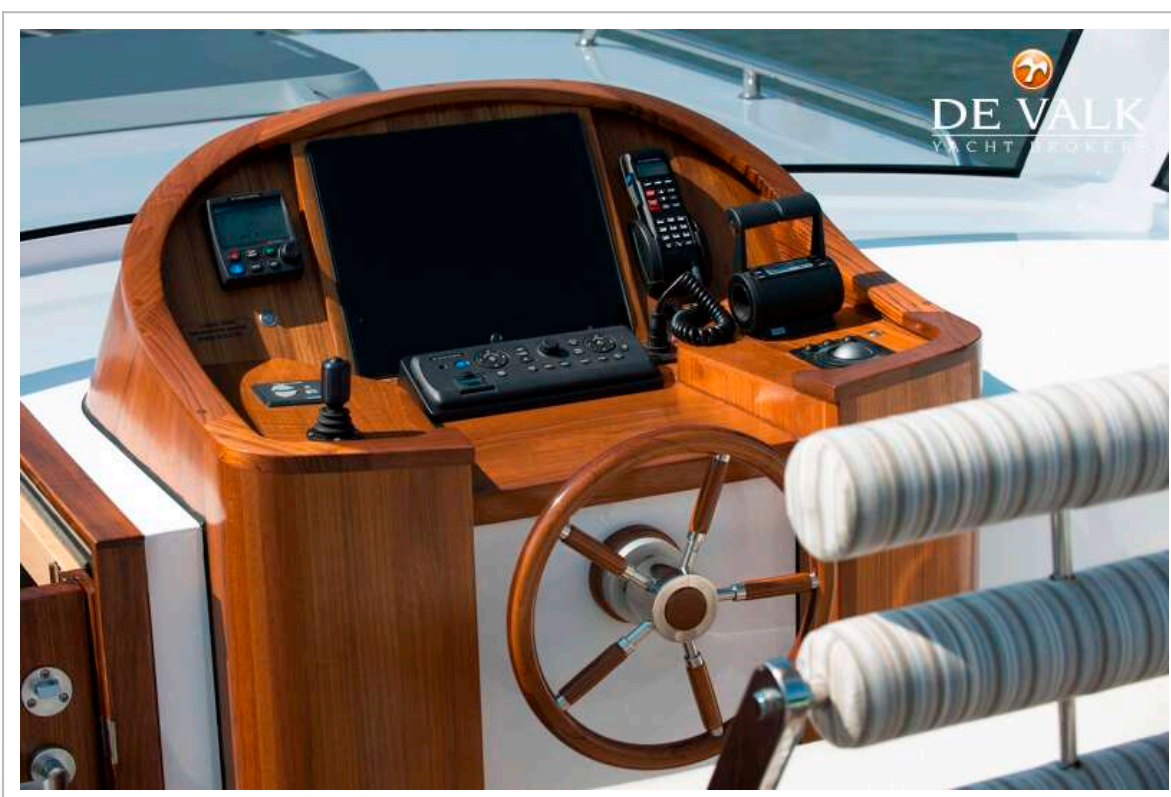




## VRIPACK 46 AC

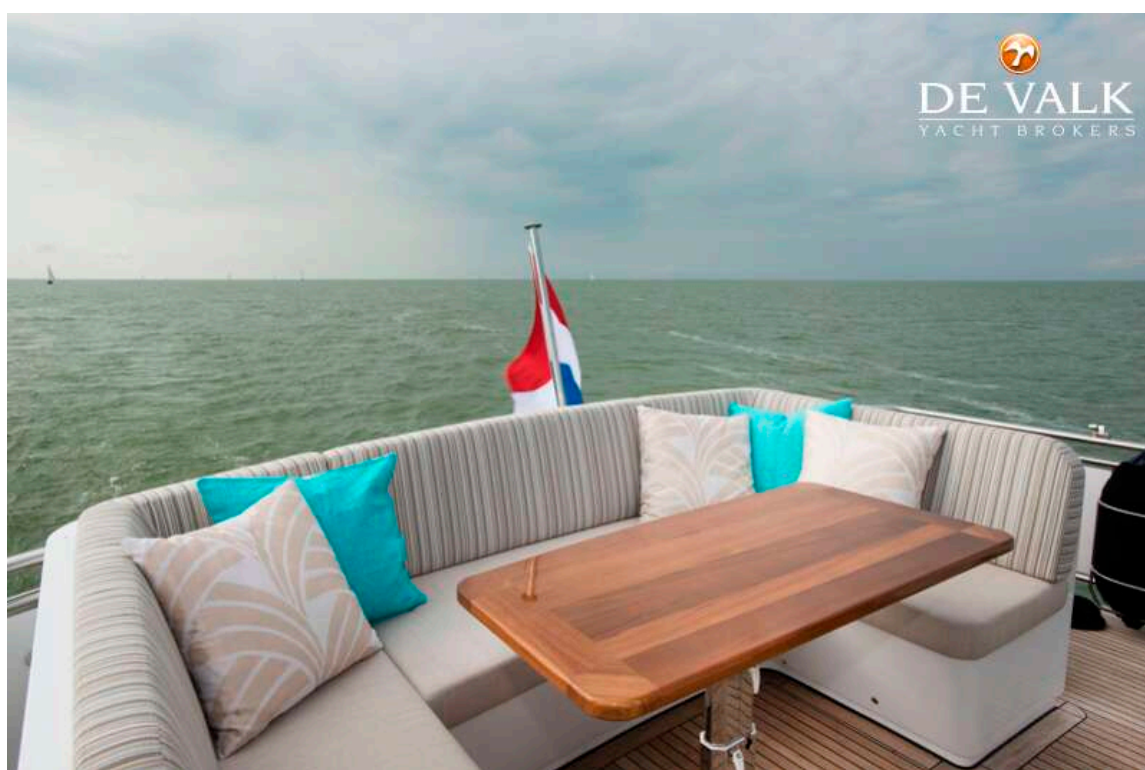
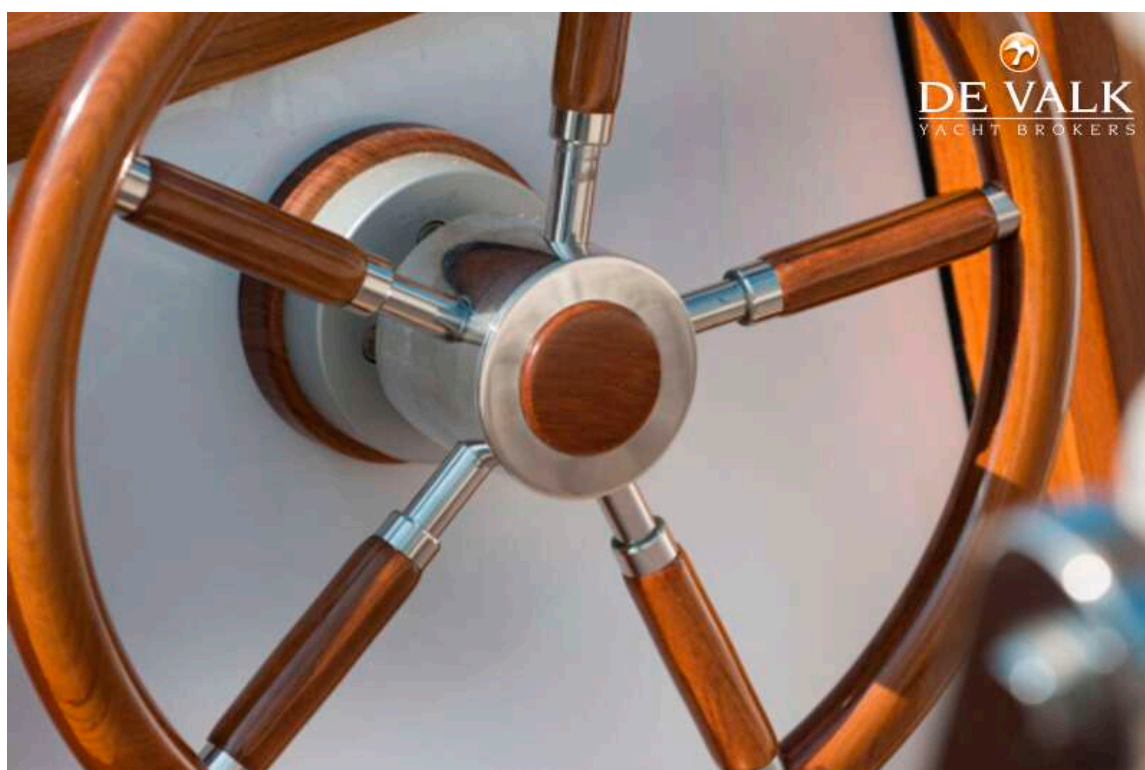


## VRIPACK 46 AC





# VRIPACK 46 AC

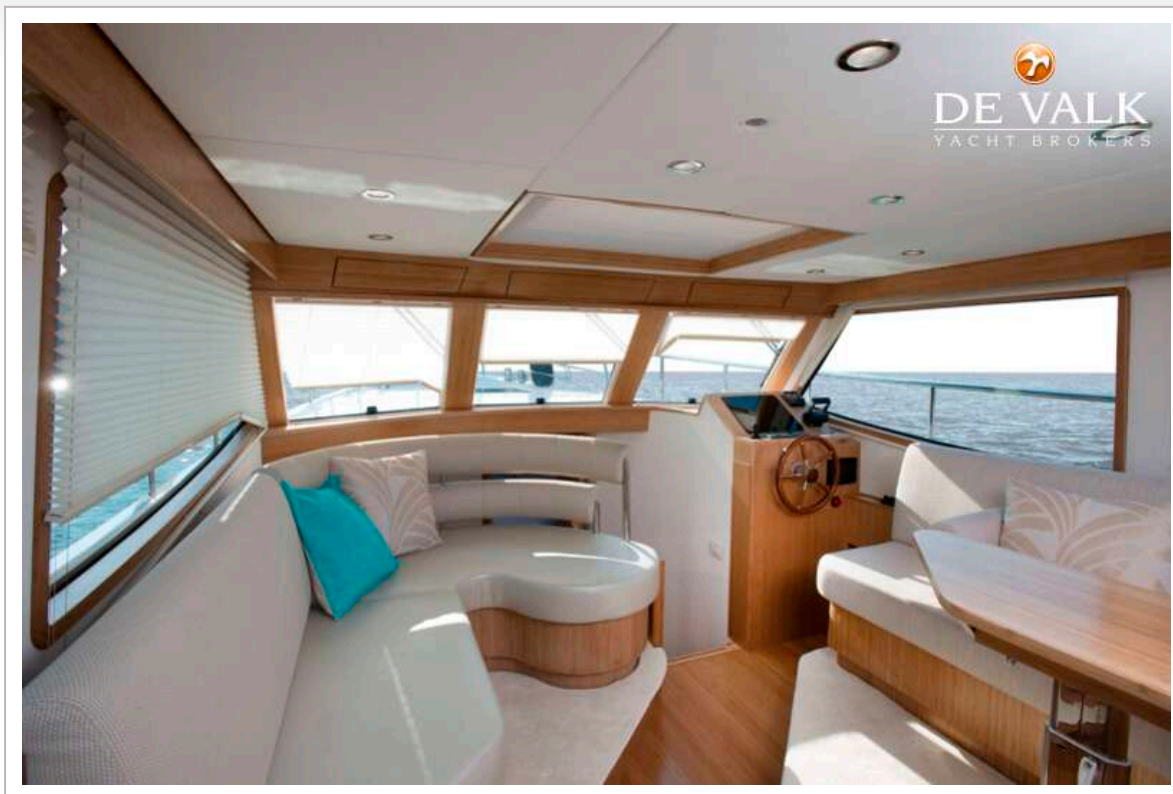


# VRIPACK 46 AC

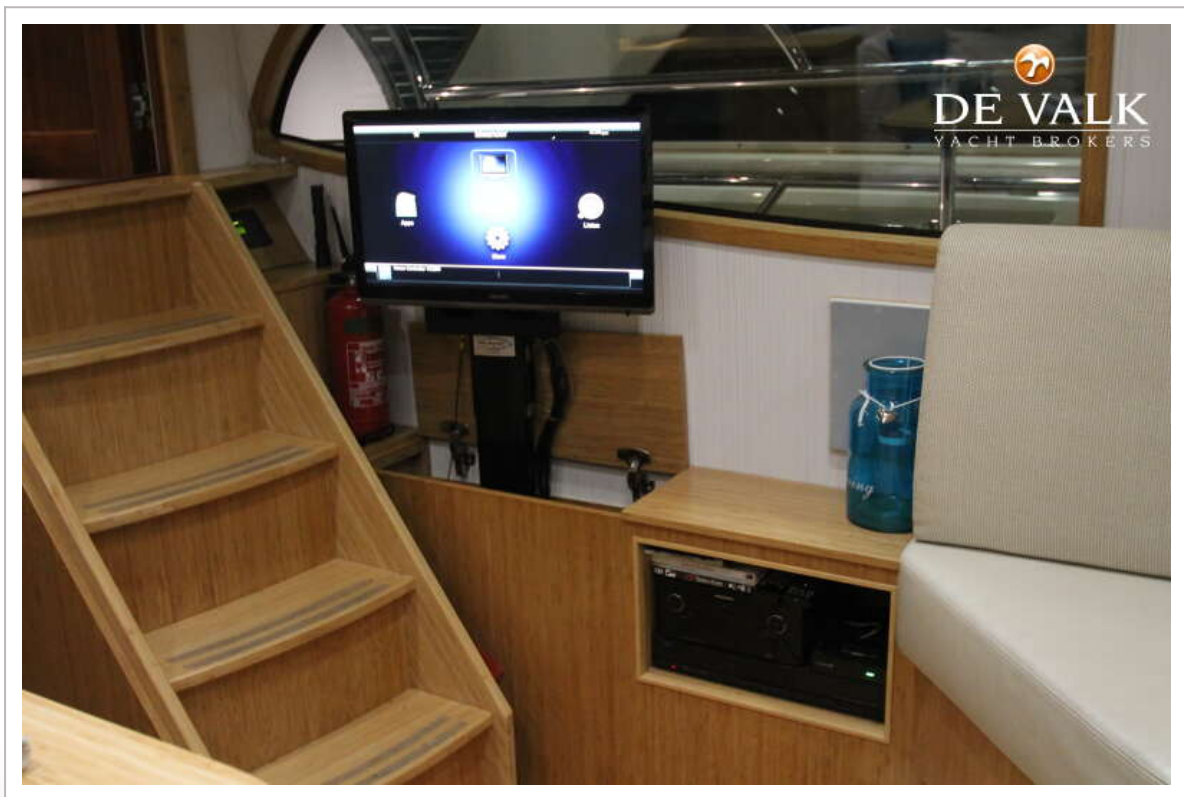




# VRIPACK 46 AC

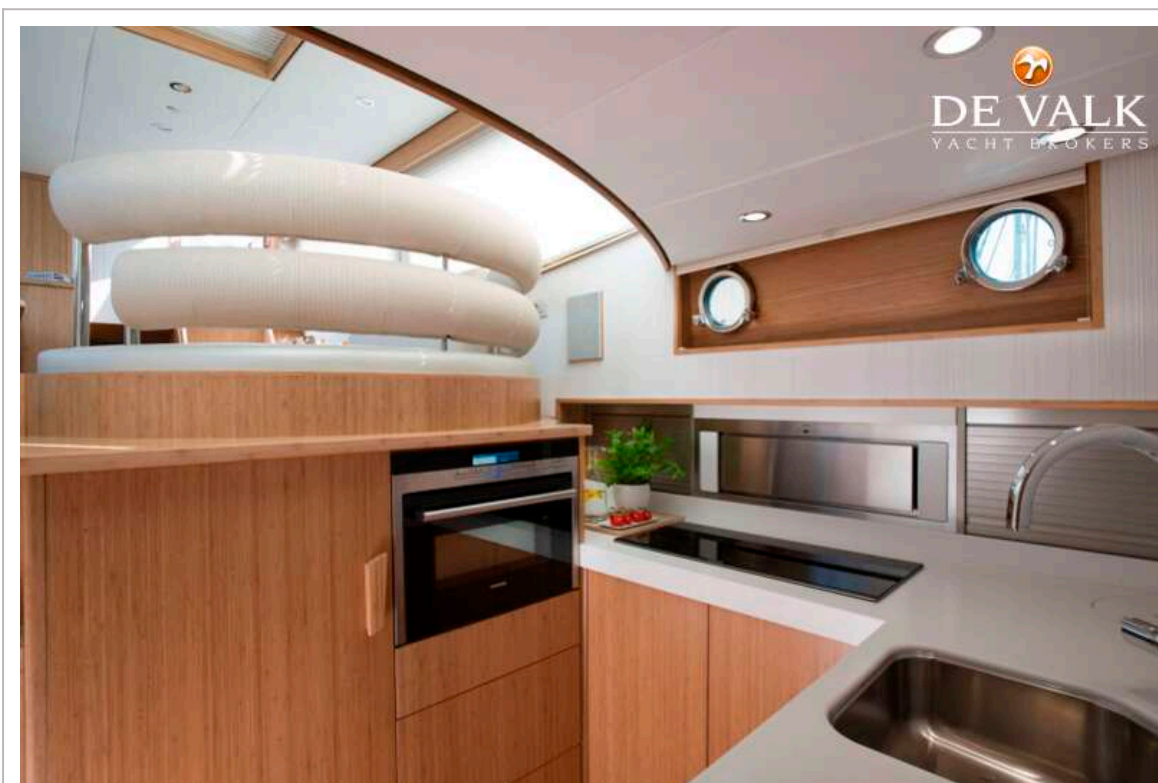


# VRIPACK 46 AC





# VRIPACK 46 AC

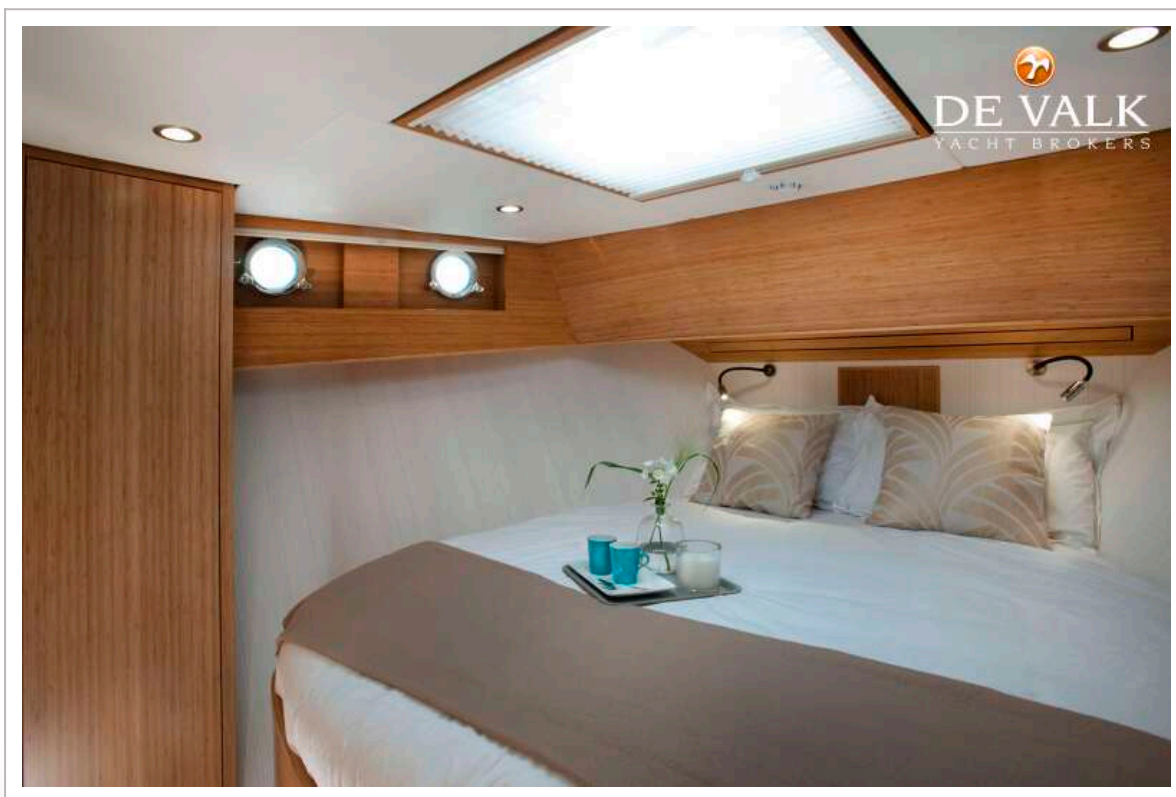
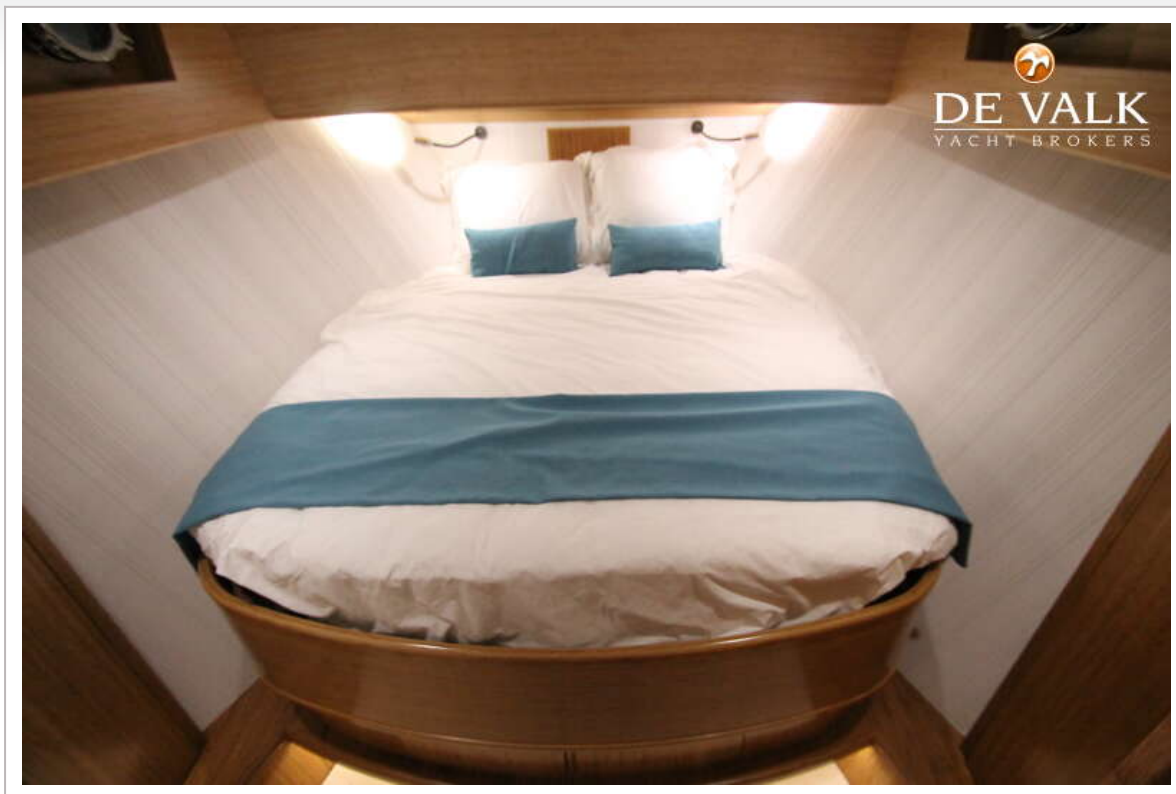


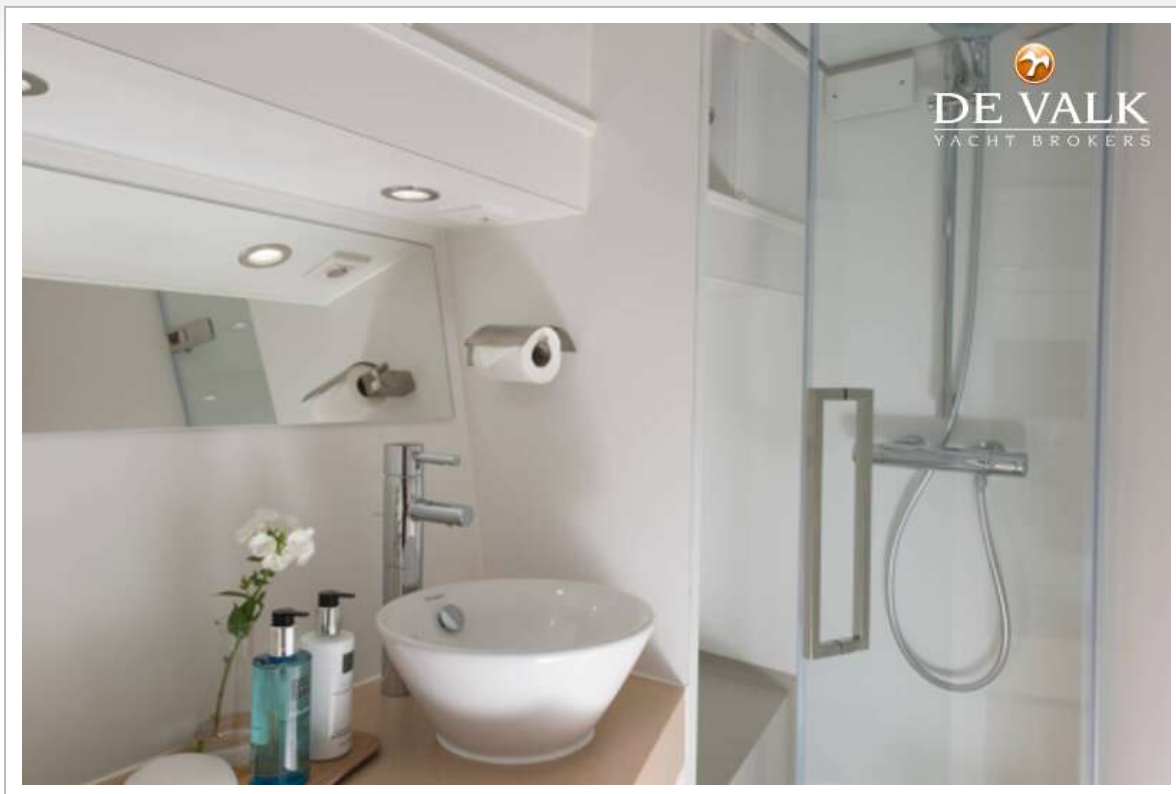
## VRIPACK 46 AC





## VRIPACK 46 AC

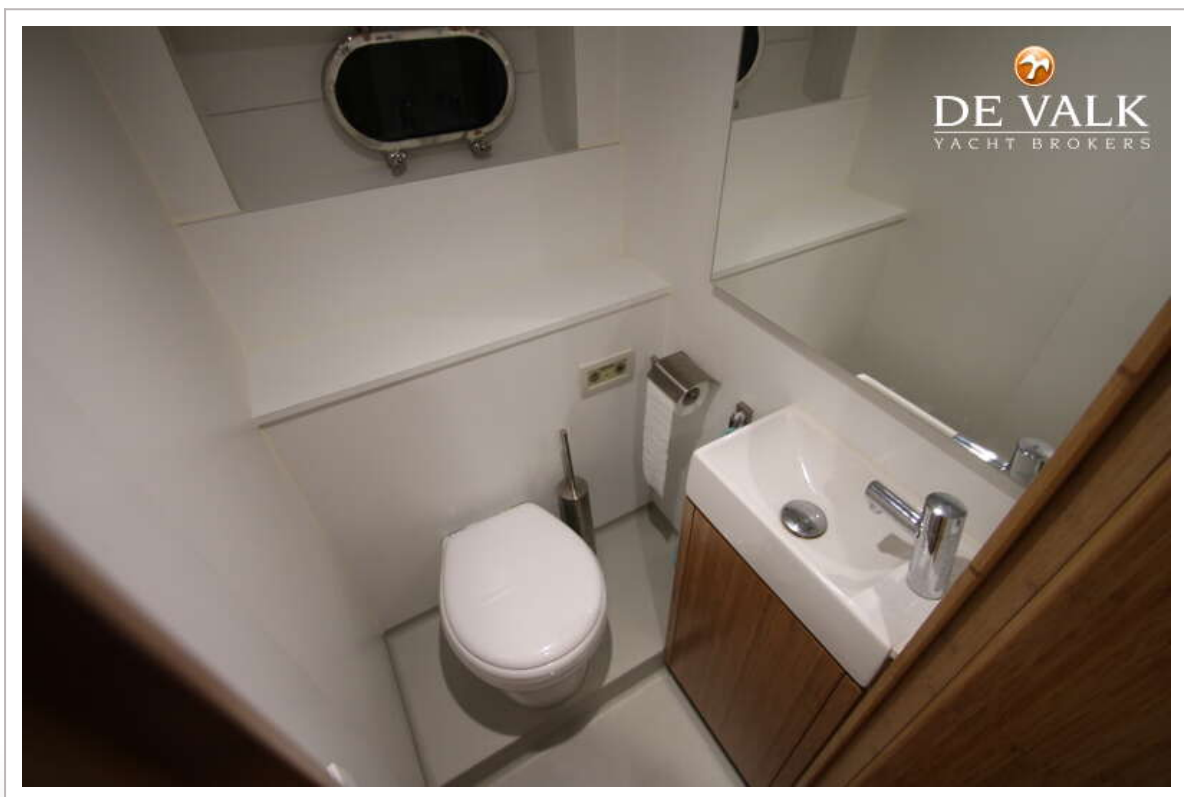
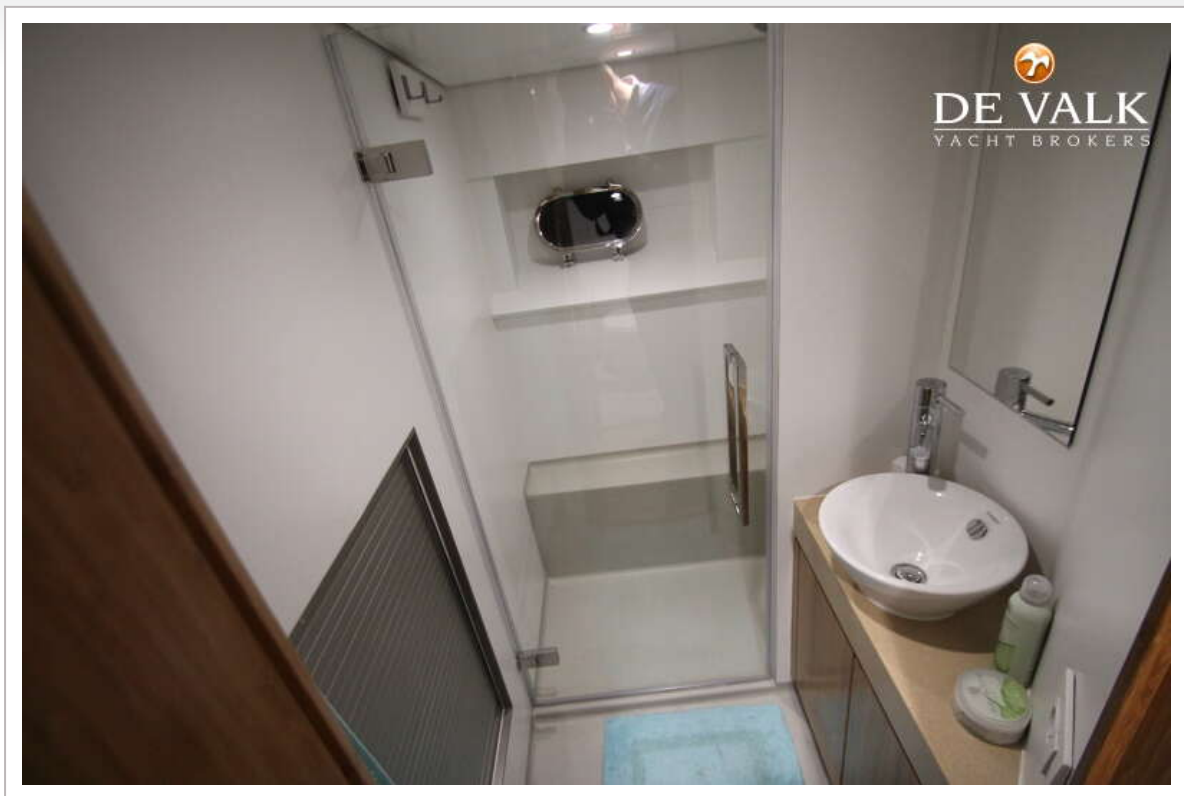




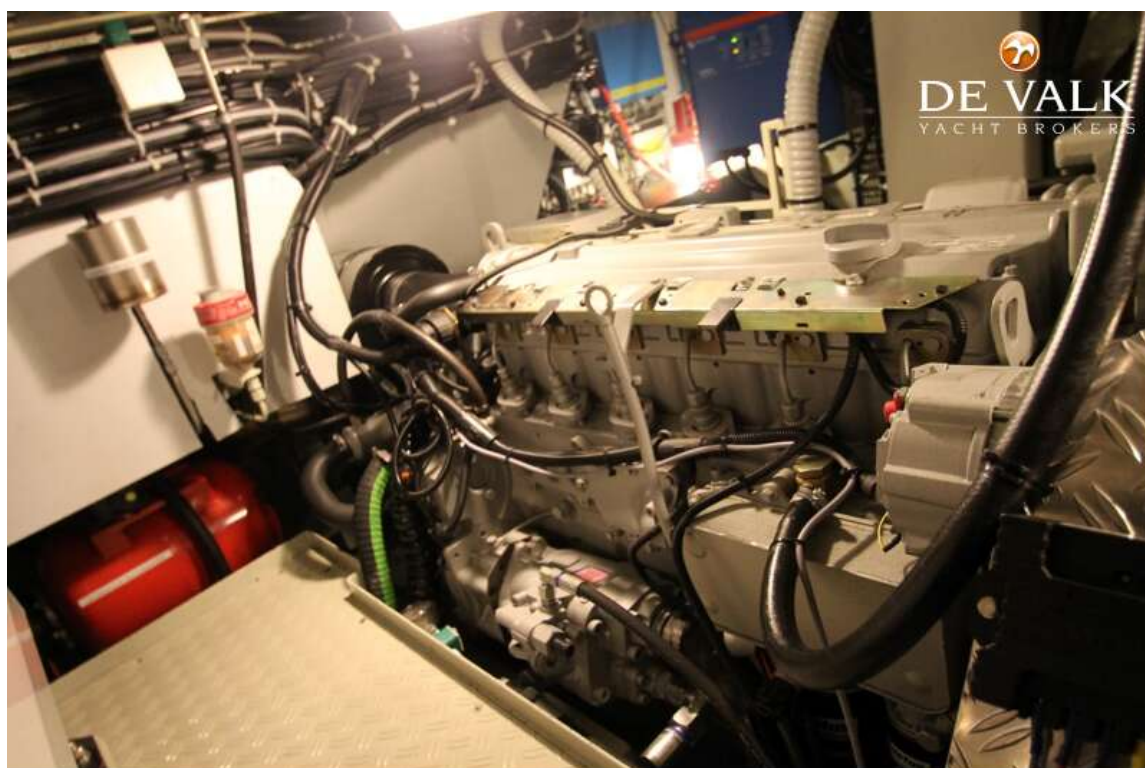


## VRIPACK 46 AC





## VRIPACK 46 AC





## VRIPACK 46 AC

