



DE VALK
YACHT BROKERS



HORIZON 45



DE VALK
YACHT BROKERS

BROKER'S COMMENTS

When we search for comfortable, spacious and fast going motor yacht this Horizon 45 could be of interest. She has two spacious cabins with private toilet and shower, a galley with a dinette that can be converted into a double berth, a salon with large windows, a spacious aft deck with a roof, and a large fly bridge. Two Caterpillar engine's and a 12 Kva generator make the boat complete. Make an appointment with our Sneek office, the boat is moored inside a 'shore at this moment.

Pieter Bosma

SPECIFICATIONS

Dimensions	14.65 x 4.57 x 1.22 (m)	Builder	Horizon Yachts Ltd
Built	1992	Cabins	2
Material	GRP	Berths	6
Engine(s)	2 x Caterpillar 3208 diesel	Hp/Kw	2 x 375.00 (hp), 275.63 (kw)
Asking price	sold (VAT)	Lying	contact Sneek

CONTACT

Sales office	De Valk Sneek	Telephone	+31 (0)515 42 80 30
Address	Zwolsmanweg 7 8606 KC Sneek NL	E-mail	sneek@devalk.nl

DISCLAIMER

These particulars are given in good faith as supplied but cannot be guaranteed.



GENERAL

Model	HORIZON 45
Type	motor yacht
LOA (m)	14,65
Beam (m)	4,57
Draft (m)	1,22
Air draft min (m)	4,50
Headroom (m)	1,95
Year built	1992
Builder	Horizon Yachts Ltd
Country	Taiwan
Displacement (t)	18
CE norm	NA
Hull material	GRP
Hull colour	white
Hull shape	deep-V
Superstructure material	GRP
Rubbing strake	stainless steel Teak with
Deck material	GRP
Deck finish	teak
Superstructure deck finish	non-skid moulded in
Antifouling (year)	2020
Window frame	stainless steel
Window material	glass
Deckhatch	yes
Portholes	aluminium With flyscreens
Flybridge	yes
Flybridge cover	yes
Flybridge suncover	Bimini
Radar arch	collapsible
Fuel tank (litre)	aluminium 1800 ltr



Level indicator (fuel tank)	yes
Freshwater tank (litre)	stainless steel 800 ltr
Blackwater tank (litre)	polyethylene 160 ltr
Wheel steering	hydraulic
Inside helm position	yes
Flybridge helm position	
More info on hull	has been treated against osmosis in 2012
Extra info	standing a'shore inside

ACCOMMODATION

Cabins	2
Berths	6
Interior	teak
Floor	carpet
Aft deck	with teak and roof
Saloon	yes
Headroom saloon (m)	1,95 m
Heating	central hot water Webasto
Heating 2	electric 220V
Air-conditioning	single cycle airco Marine Air
Aft Cabin	yes
Dinette	yes
Dinette to convert into berth	yes
Sliding door to aft deck	Stainless Steel
Galley	yes
Countertop	plastic
Sink	stainless steel Double
Cooker	ceramic Siemens Topline
Oven	Siemens
Microwave	AEG
Fridge	Norcold



Hot water system	220V + engine Raritan
Water pressure system	electrical
Manual and/or foot pump	Handpump
Kettle	yes
Ice maker	yes
Coffee maker	Krups
Owners cabin	French bed
Bed length (m)	2,00
Wardrobe	hanging/drawers/shelves
Bathroom	en suite
Toilet	en suite
Toilet system	electric
Wash basin	in the bathroom
Shower	en suite
Guest cabin 1	French bed
Bed length (m)	2,00 m
Wardrobe	hanging/drawers/shelves
Bathroom	en suite
Toilet	separate
Toilet system	electric
Wash basin	in the bathroom
Shower	en suite

MACHINERY

No of engines	2
Make	Caterpillar
Type	3208
HP	375
kW	275,63
Fuel	diesel
Year installed	1992



Engine hours	1259
Engine cooling system	freshwater heat exchanger
Drive	shaft
Shaft seal	yes
Engine controls	hydraulic
Gearbox	hydraulic
Bowthruster	electric
Sternthruster	electric
Exhaust	watercooled
Propeller type	fixed
Propeller blades	4
Propeller shaft material	stainless steel
Shaft lubrication	water
Manual bilge pump	yes
Electric bilge pump	yes
Electrical installation	12/220V
Generator	wet exhaust Onan 12 Marine Genset
Batteries	yes
Start battery	2x
Service battery	1x
Generator battery	1x
Bowthruster battery	1x
Sternthruster battery	1x
Battery charger	Sterling Pro Charge D
Shorepower	with cable
Trimtabs	yes

NAVIGATION

Compass	Silva 100
Compass on flybridge	Silva 100
Depth sounder/log	Autohelm Tridata



VHF	Simrad RS35 VHF Seefunck (2020)
VHF handheld	Simrad Handset HS 35 (2020)
Autopilot	Autohelm 7000
Plotter/GPS	inside and on the fly Raymarine E series 2020
AIS receiver	yes
Navigation lights	yes
Loudhailer	yes

EQUIPMENT

Bimini	yes
Window cover	yes
Cockpit cushions	yes
Bathing platform	yes
Boarding ladder	stainless steel
Transom door	yes
Bow ladder	yes
Gangway	Teak
Deck shower	yes
Anchor	CQR Plough
Anchor chain	yes
Windlass	electrical Lofrans
Deck wash	yes
Davits	stainless steel Prasolux
Sea railing	stainless steel
Grab rail (superstructure)	
Railing side opening gates	yes
Wiper	2x
Horn	electric
Fenders	yes
Mooring lines	yes
Radio-cd player	yes



Cockpit speakers	yes
Speakers in salon	yes
Clock - barometer	Wempe
Extinguisher in engine room	Need inspection
Extra info	fender corbs



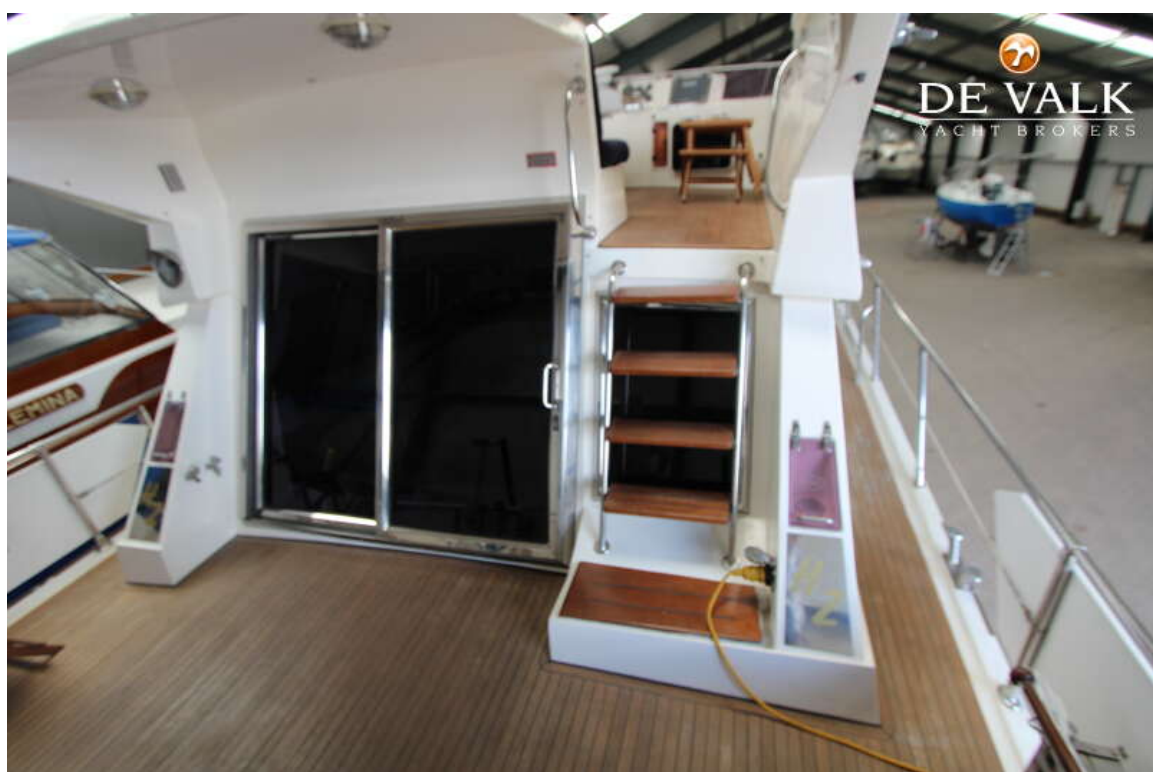
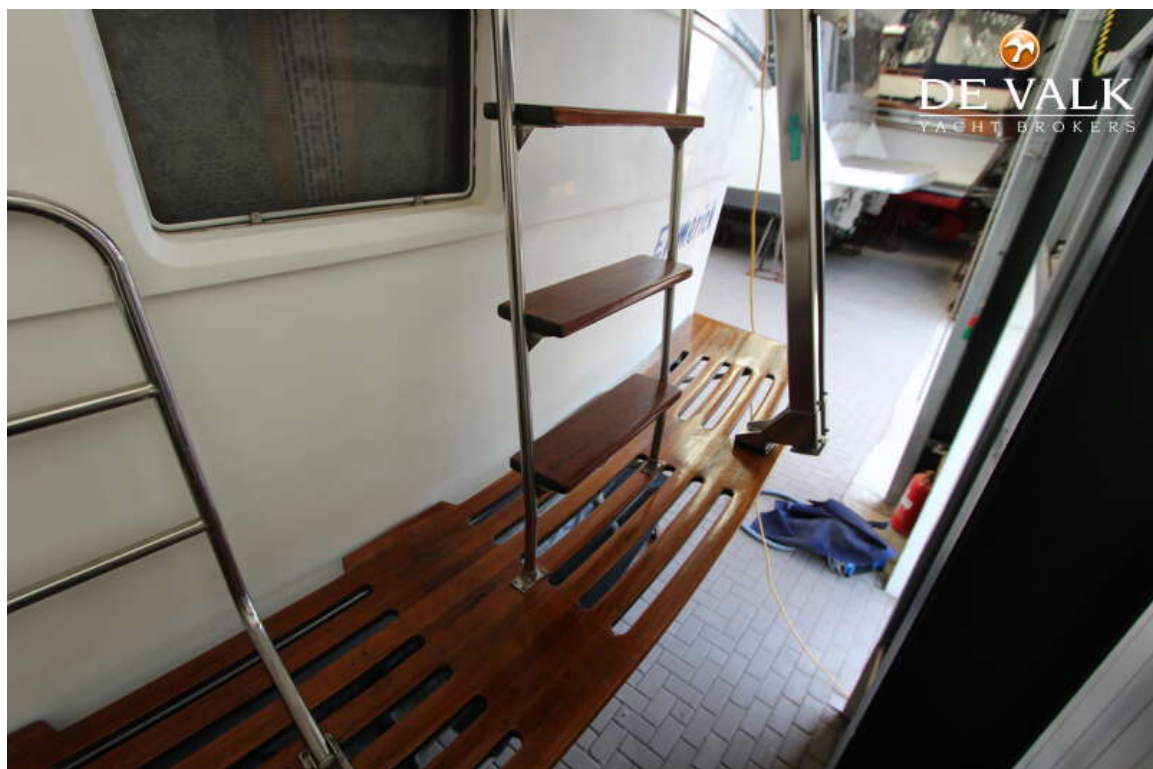
HORIZON 45



HORIZON 45



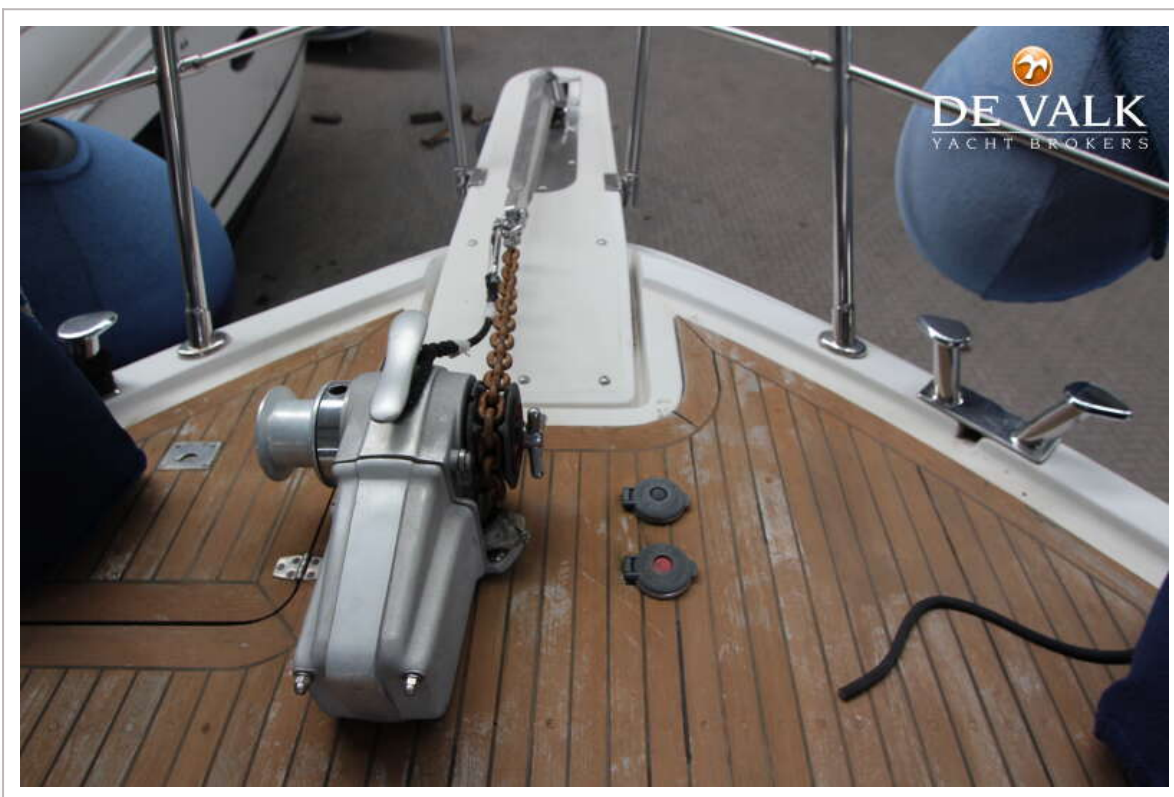
HORIZON 45



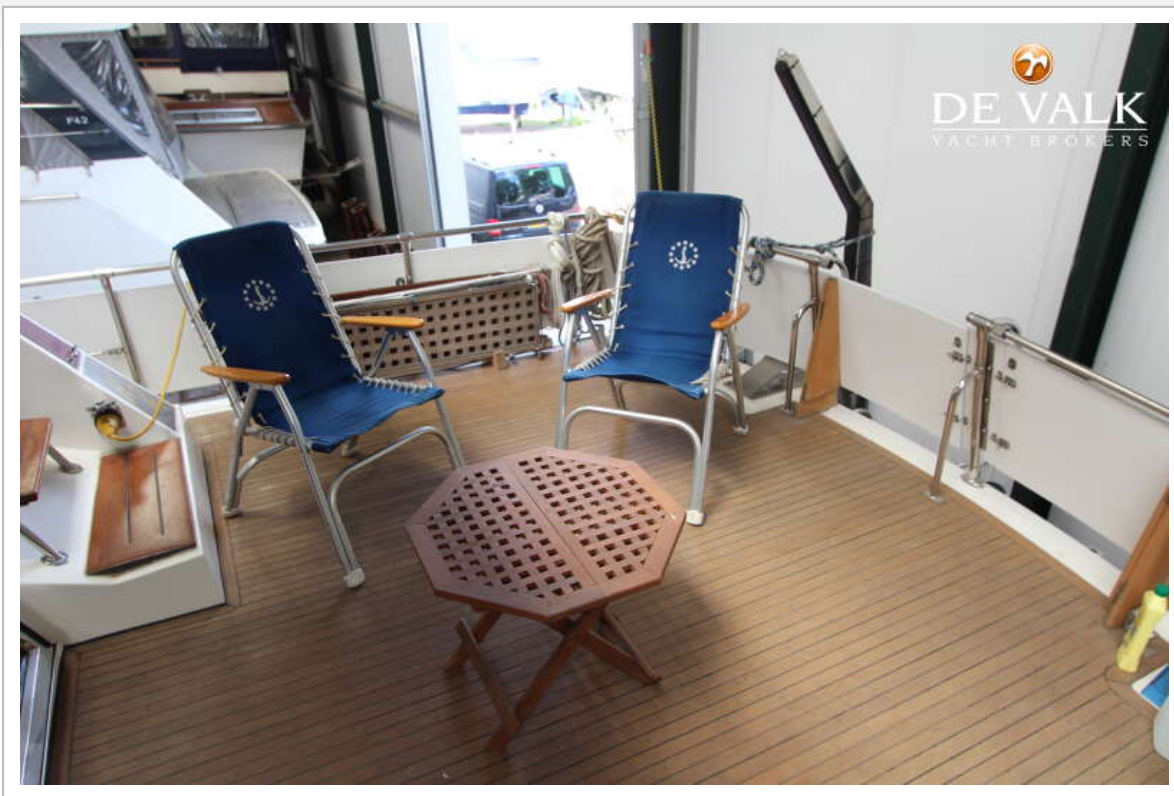
HORIZON 45



HORIZON 45



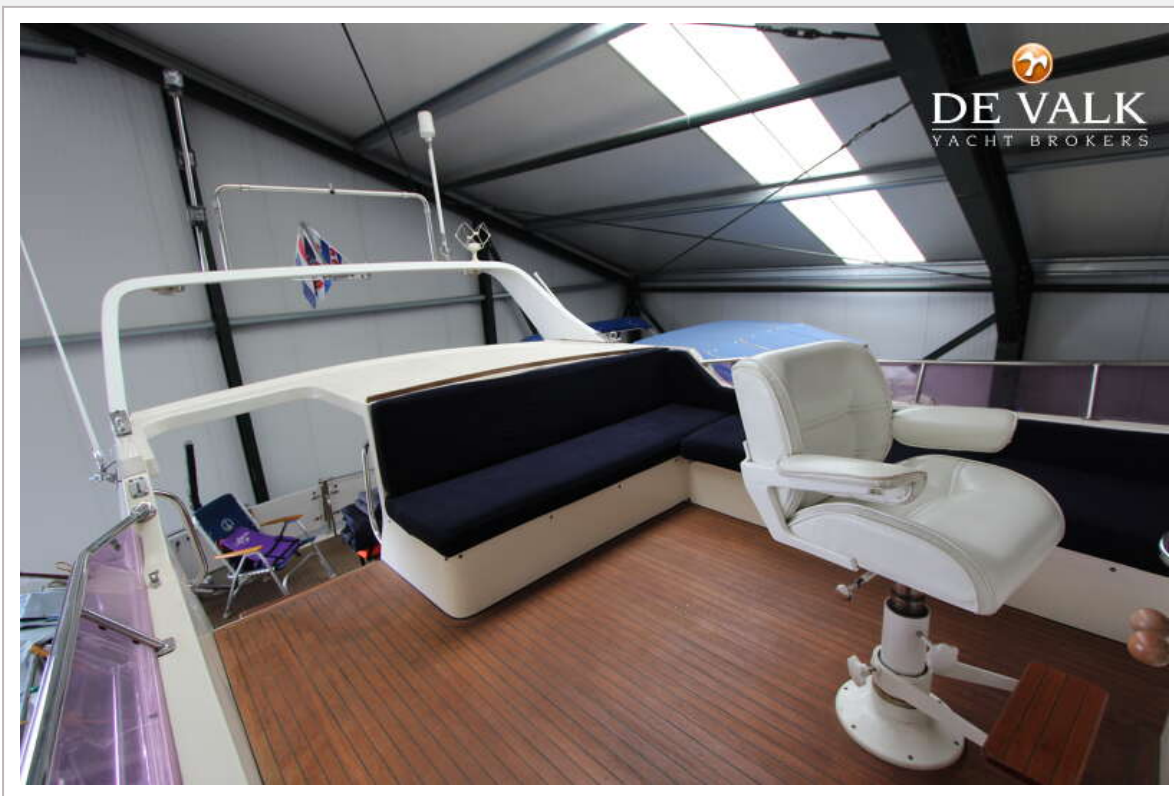
HORIZON 45

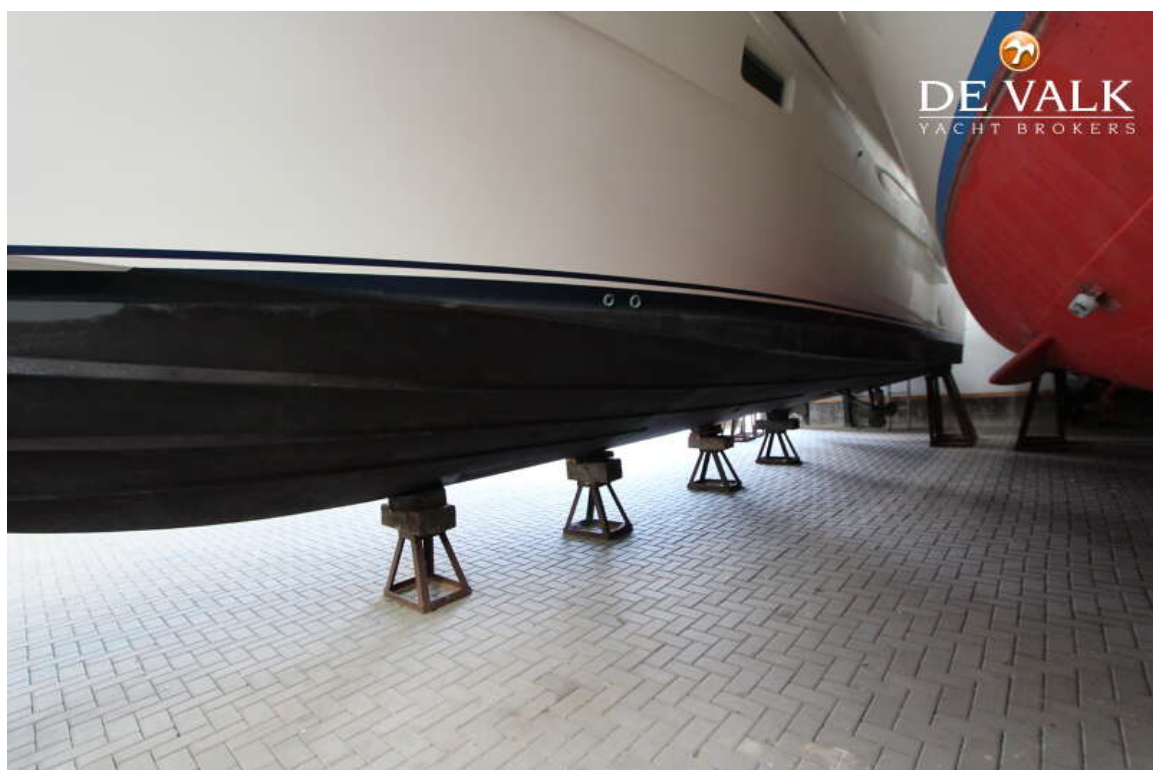


HORIZON 45

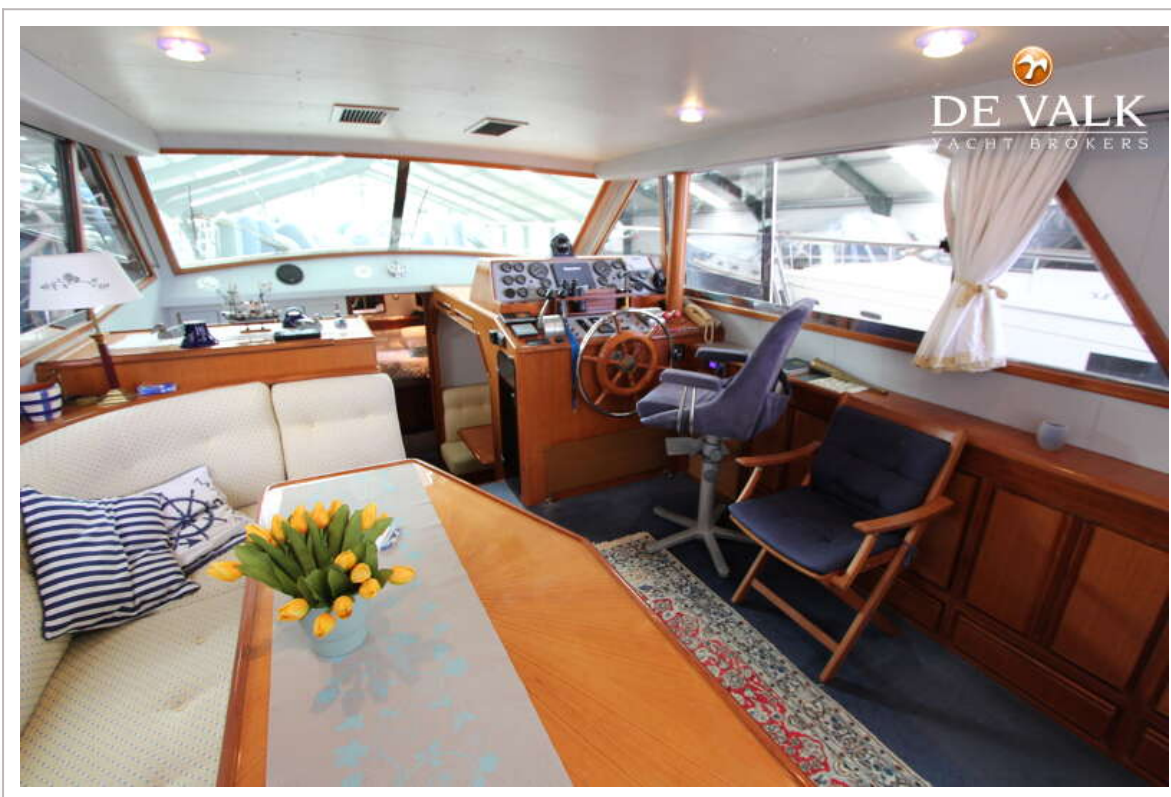


HORIZON 45



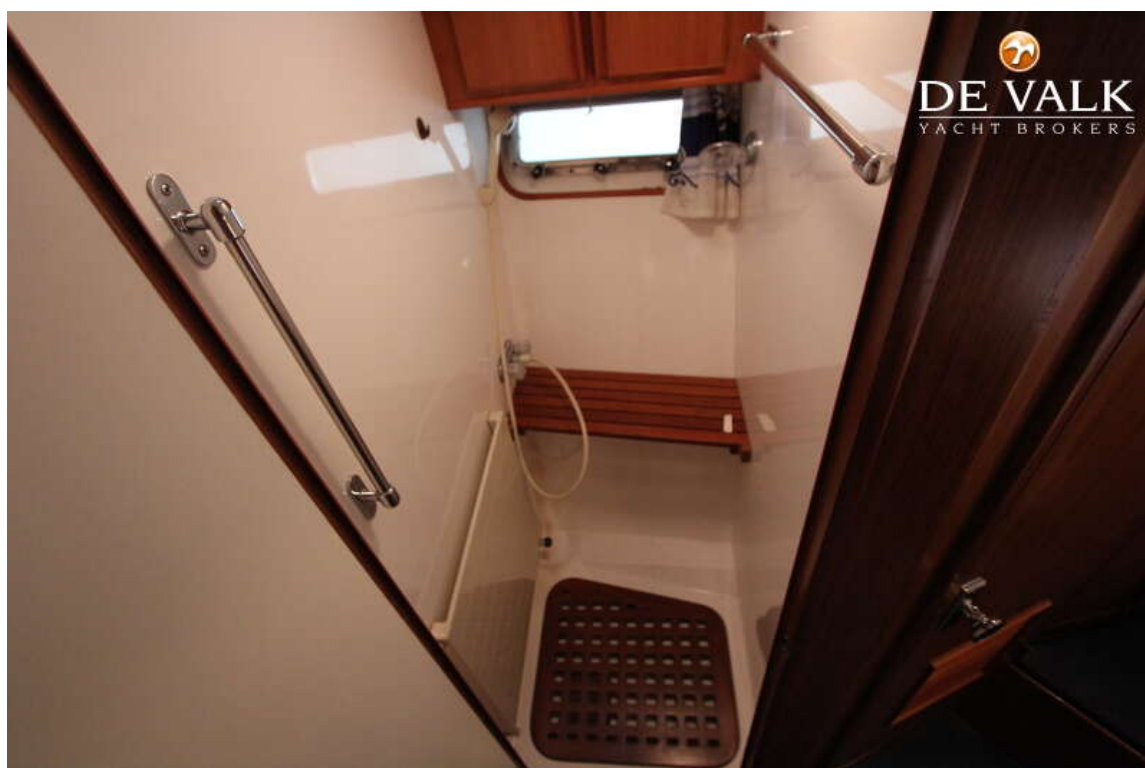


HORIZON 45



HORIZON 45





HORIZON 45



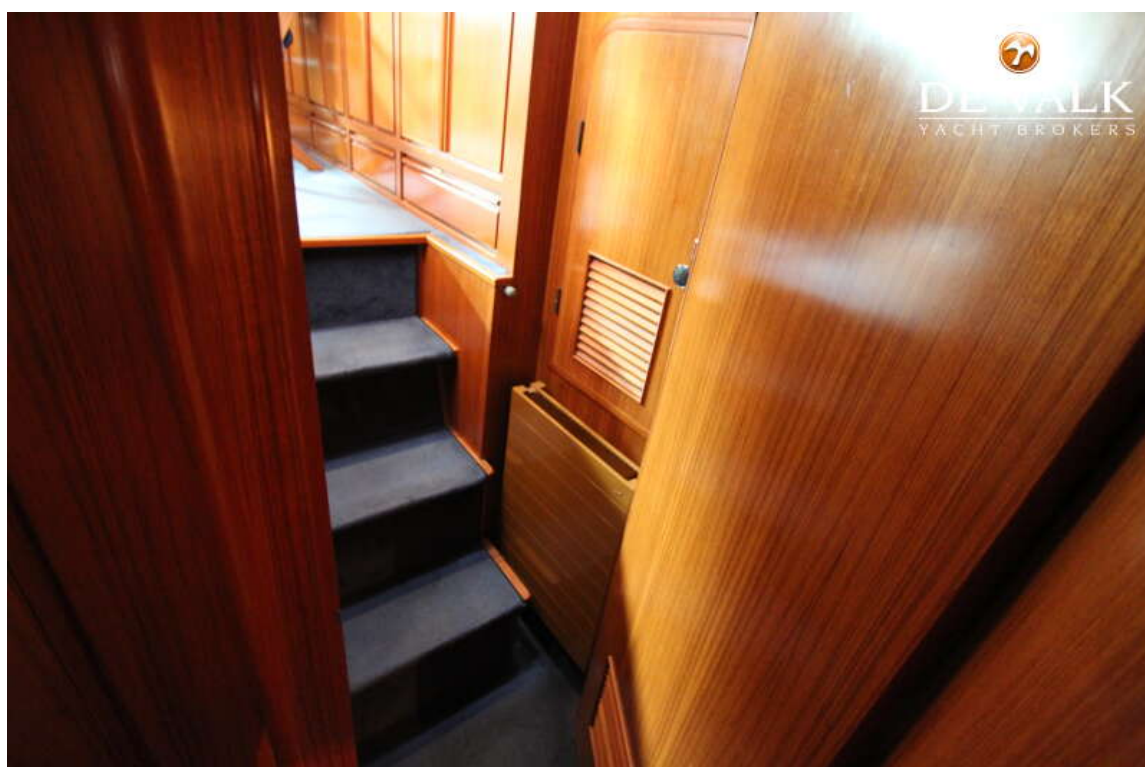
HORIZON 45



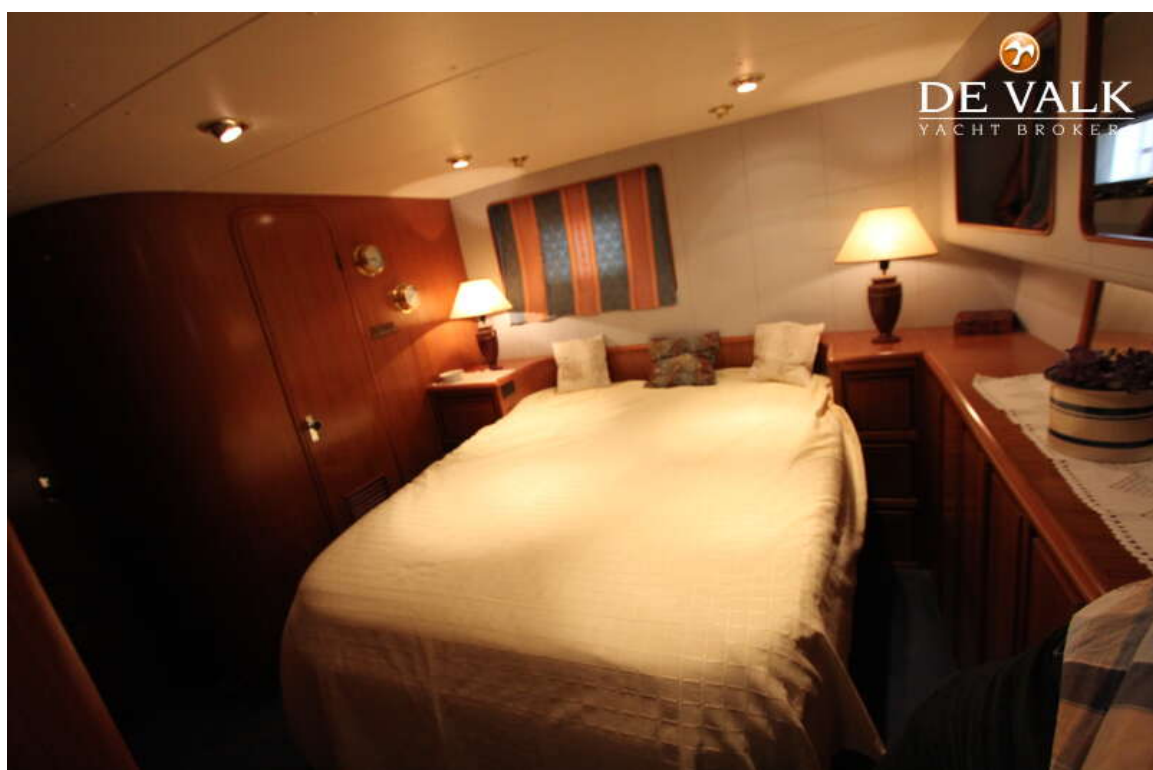
HORIZON 45



HORIZON 45



HORIZON 45



HORIZON 45

