



DE VALK  
YACHT BROKERS



## VIVANTE 55



DE VALK  
YACHT BROKERS

## BROKER'S COMMENTS

Vivante 55 "Salu" a mega motor yacht, classically lined with a modern but timeless interior and great sailing characteristics. That is "Salu" in short. Yet just a small summary of the equipment level: Kabola central (floor) heating, air conditioning. Hydraulic stabilizers, Electrically operated spud poles, Electrically operated convertible top, Hydraulic submersible bathing platform, Hydraulic bow and stern propeller with remote control, Motor control with remote control, Spacious fully equipped kitchen & CVO approved. De Vivante 55 is as new. . . we hope to see you soon at De Valk in Sneek

*Henk de Vries*

## SPECIFICATIONS

<b>Dimensions</b>	18.20 x 5.22 x 1.40 (m)	<b>Builder</b>	Vivante Yachts Sneek
<b>Built</b>	2010	<b>Cabins</b>	3
<b>Material</b>	Steel	<b>Berths</b>	6
<b>Engine(s)</b>	2 x Vetus Deutz DET 66E 452A diesel	<b>Hp/Kw</b>	2 x 170.00 (hp), 124.95 (kw)
<b>Asking price</b>	sold (VAT )	<b>Lying</b>	at sales office

## CONTACT

<b>Sales office</b>	De Valk Sneek	<b>Telephone</b>	+31 (0)515 42 80 30
<b>Address</b>	Zwolsmanweg 7 8606 KC Sneek NL	<b>E-mail</b>	sneek@devalk.nl

## DISCLAIMER

These particulars are given in good faith as supplied but cannot be guaranteed.



## GENERAL

<b>Model</b>	VIVANTE 55
<b>Type</b>	motor yacht
<b>LOA (m)</b>	18,20
<b>LWL (m)</b>	14,88
<b>Beam (m)</b>	5,22
<b>Draft (m)</b>	1,40
<b>Air draft (m)</b>	3,45
<b>Headroom (m)</b>	2,00
<b>Year built</b>	2010
<b>Builder</b>	Vivante Yachts Sneek
<b>Country</b>	The Netherlands
<b>Designer</b>	Vripack Sneek
<b>Displacement (t)</b>	40
<b>CE norm</b>	A
<b>Hull material</b>	steel
<b>Hull colour</b>	white
<b>Hull thickness (mm)</b>	5
<b>Hull shape</b>	round-bilged
<b>Keel type</b>	long keel
<b>Superstructure material</b>	steel
<b>Superstructure (mm)</b>	4
<b>Deck plate thickness (mm)</b>	4
<b>Rubbing strake</b>	stainless steel
<b>Deck material</b>	steel
<b>Deck finish</b>	teak
<b>Superstructure deck finish</b>	paint
<b>Antifouling (year)</b>	2020
<b>Dorades</b>	yes
<b>Window frame</b>	aluminium
<b>Window material</b>	double glazing



<b>Deckhatch</b>	3X Bomar
<b>Portholes</b>	stainless steel
<b>Insulation</b>	foam Met vrij hangende vloeren
<b>Radar arch</b>	collapsible
<b>Mast can be lowered</b>	electric
<b>Fuel tank (litre)</b>	steel 2000
<b>Level indicator (fuel tank)</b>	VDO
<b>Freshwater tank (litre)</b>	stainless steel 1000
<b>Level indicator (freshwater)</b>	VDO
<b>Blackwater tank (litre)</b>	stainless steel 400
<b>Level indicator (blackwater)</b>	VDO
<b>Blackwater tank extraction</b>	deck extraction + pump
<b>Greywater tank (litre)</b>	yes
<b>Level indicator (greywater)</b>	VDO
<b>Wheel steering</b>	hydraulic
<b>Outside helm position</b>	hydraulic
<b>More info on paintwork</b>	2 componenten Alex Seal
<b>Extra info</b>	2 Spudpalen, elektrisch bedienbaar
<b>Extra info</b>	CVO Gekeurd

## ACCOMMODATION

<b>Cabins</b>	3
<b>Berths</b>	6
<b>Floor</b>	carpet
<b>Aft deck</b>	yes
<b>Saloon</b>	yes
<b>Headroom saloon (m)</b>	2,0
<b>Heating</b>	central heating Kabola HR500 Vloerverwarming/floorheating
<b>Heating 2</b>	Elektrisch "Kick Space"
<b>Air-conditioning</b>	reverse cycle airco CruiseAir met DDC Chilled Water Master Control.



Aft Cabin	yes
Dining room	yes
Opening door to cockpit	yes
Galley	yes
Countertop	corian
Sink	stainless steel
Cooker	ceramic Gaggenau 4-pits
Extractor	Gaggenau
Microwave/oven combi	Bosch Gourmet Combi
Fridge	Isotherm
Freezer	Isotherm 4-laden
Hot water system	on central heating
Water pressure system	electrical
Dishwasher	Bosch
Ice maker	yes
Coffee maker	yes
Owners cabin	French bed
Bed length (m)	2,10
Wardrobe	hanging and drawers
Bathroom	en suite
Toilet	en suite
Toilet system	electric
Wash basin	in the bathroom Dubbel / Double
Shower	en suite
Guest cabin 1	v-bed
Bed length (m)	2,0
Wardrobe	hanging/drawers/shelves
Bathroom	shared
Toilet	separate
Toilet system	electric
Wash basin	at the toilet
Shower	separate



<b>Guest cabin 2</b>	twin single
<b>Bed length (m)</b>	2,0
<b>Wardrobe</b>	hanging/drawers/shelves
<b>Bathroom</b>	shared
<b>Toilet</b>	shared
<b>Washing machine/dryer combi</b>	Candy A Wash CDB134
<b>Central vacuum cleaner</b>	Away C 30
<b>Extra info</b>	Kantoor ruimte met bureau en bergruimte naast de eigenaarshut

## MACHINERY

<b>No of engines</b>	2
<b>Make</b>	Vetus Deutz
<b>Type</b>	DET 66E 452A
<b>HP</b>	170
<b>kW</b>	124,95
<b>Fuel</b>	diesel
<b>Year installed</b>	2010
<b>Maximum speed (kn)</b>	10
<b>Cruising speed (kn)</b>	8
<b>Consumption (l/hr)</b>	6
<b>Engine hours</b>	612/617
<b>Engine cooling system</b>	freshwater heat exchanger
<b>Drive</b>	shaft
<b>Engine controls</b>	electrical
<b>Gearbox</b>	ZF
<b>Bowthruster</b>	hydraulic Proportional
<b>Sternthruster</b>	hydraulic Proportional
<b>Propeller type</b>	fixed
<b>Propeller blades</b>	4-blads
<b>Propeller shaft material</b>	stainless steel
<b>Shaft lubrication</b>	water



<b>Electric bilge pump</b>	yes
<b>Bilge alarm</b>	yes
<b>Electrical installation</b>	24V / 220V
<b>Generator</b>	silent separator Mastervolt Whispergen 16 KvA
<b>Start battery</b>	yes
<b>Service battery</b>	2 volt cellen 780Ah (2016)
<b>Generator battery</b>	yes
<b>Battery monitor</b>	yes
<b>Battery charger</b>	2x Mastervolt Chargemaster 24/100/3
<b>Inverter</b>	Mastervolt Sinewave 5 KvA
<b>Diode battery combiners</b>	yes
<b>Shorepower</b>	with cable
<b>Insulation transformer</b>	2x Mastervolt Mass 3.5 16A
<b>Stabilizers</b>	fin Naiad
<b>Extra info</b>	Afstandsbediening boeg-hekschroef en motorbediening
<b>Extra info</b>	Hydraulische pompen op beide motoren
<b>Extra info</b>	Lucht compressor,actieve kathodische bescherming, 2x wierfilter

## NAVIGATION

<b>Electric compass</b>	yes
<b>Depth sounder/log</b>	Raymarine ST70
<b>Log</b>	Raymarine ST70
<b>VHF</b>	Raymarine
<b>Autopilot</b>	Raymarine
<b>Rudder angle indicator</b>	yes
<b>Radar/GPS/plotter</b>	Raymarine E120
<b>Electronic chart(s)</b>	yes
<b>AIS transponder</b>	True Heading Carbon Pro
<b>Camera</b>	Voor/stuurboord/bakboord
<b>Navigation lights</b>	yes
<b>Searchlight</b>	Met afstandbediening ITT Jabsco



## EQUIPMENT

<b>Bimini</b>	yes
<b>Cockpit cushions</b>	yes
<b>Cockpit table</b>	yes
<b>Bathing platform</b>	Hydraulisch neerlaatbaar om eventueel een bijboot te tillen.
<b>Boarding ladder</b>	stainless steel
<b>Transom door</b>	2x
<b>Deck shower</b>	yes
<b>Anchor</b>	2x RVS
<b>Anchor chain</b>	50 mtr. met kettingstopper op de ankerlier
<b>Windlass</b>	hydraulic 2x Vetus
<b>Deck wash</b>	yes
<b>Sea railing</b>	stainless steel Oval 60x40
<b>Grab rail (superstructure)</b>	stainless steel
<b>Railing side opening gates</b>	yes
<b>Wiper</b>	3x Speich Heavy Duty
<b>Horn</b>	electric 2x
<b>Fenders</b>	yes
<b>Mooring lines</b>	yes
<b>TV</b>	3x Flatscreen 2x Salora 1x LG
<b>TV receiver</b>	yes
<b>Satellite</b>	Tracvision M5
<b>Radio-cd player</b>	yes
<b>Cockpit speakers</b>	yes
<b>Speakers in salon</b>	yes
<b>Fire extinguisher</b>	yes
<b>Auto extinguisher system</b>	yes





# VIVANTE 55



# VIVANTE 55





# VIVANTE 55



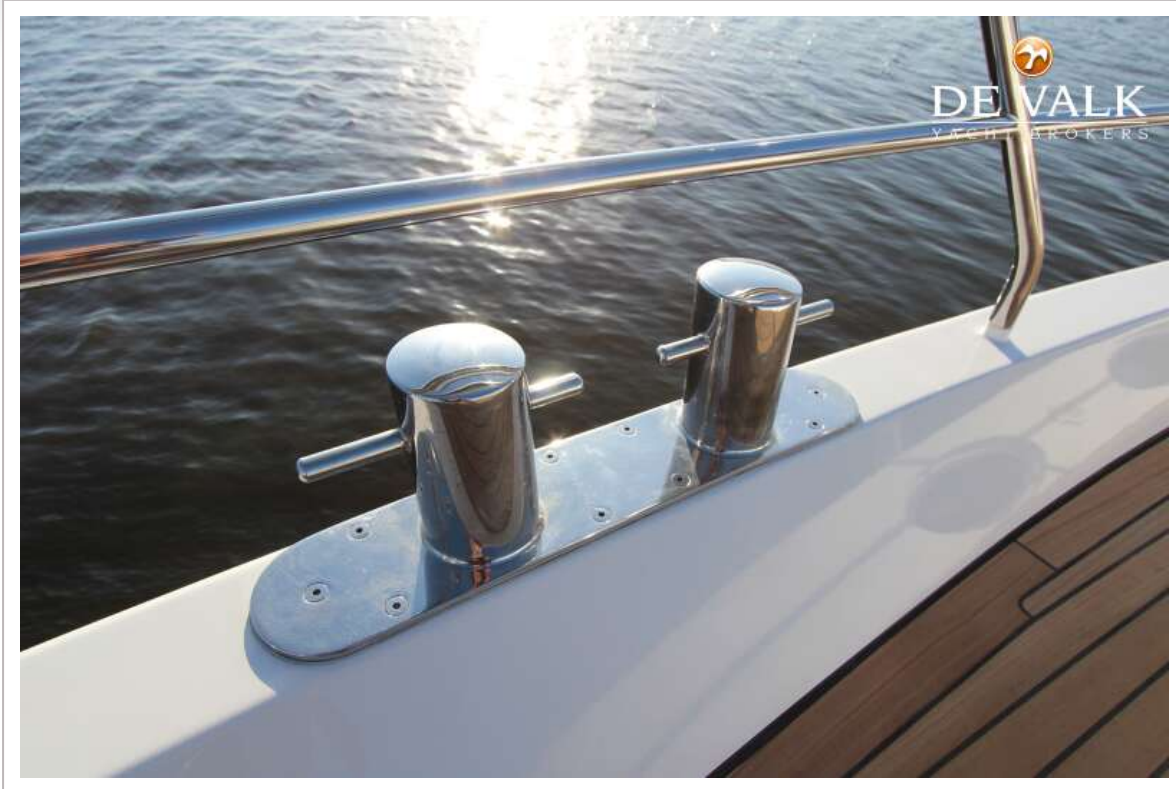
# VIVANTE 55



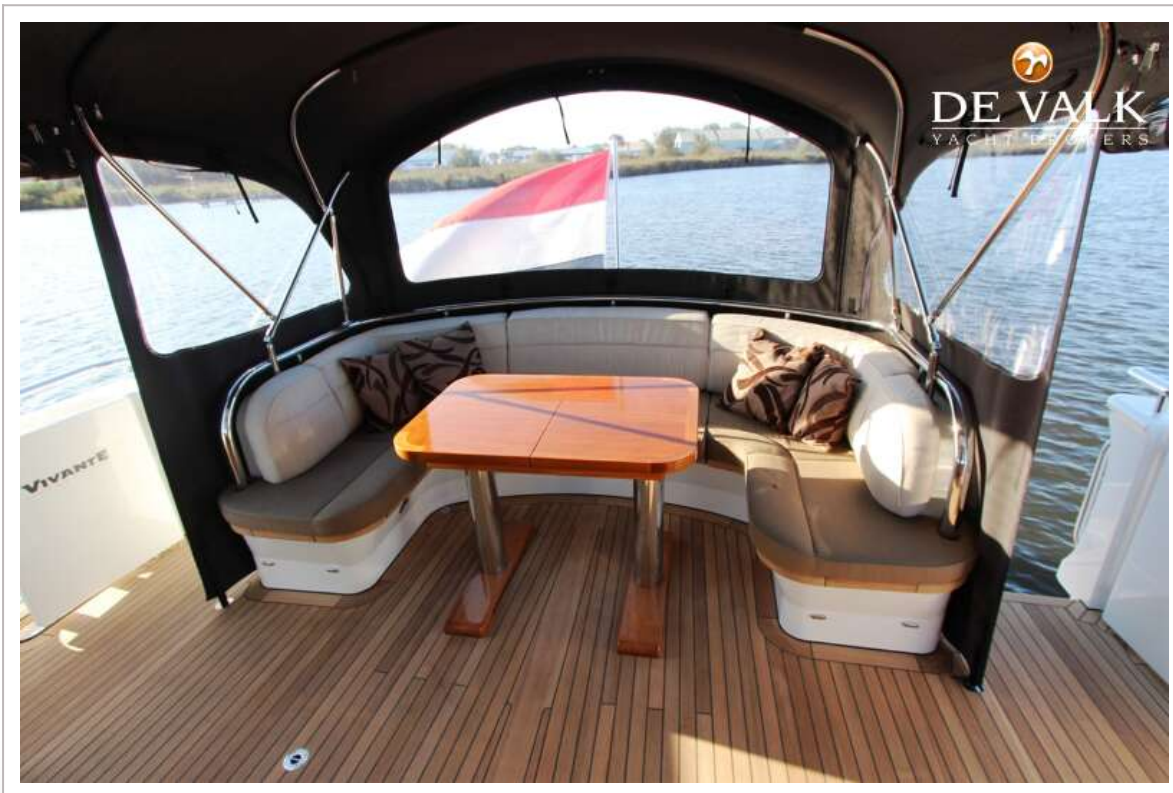
# VIVANTE 55



# VIVANTE 55

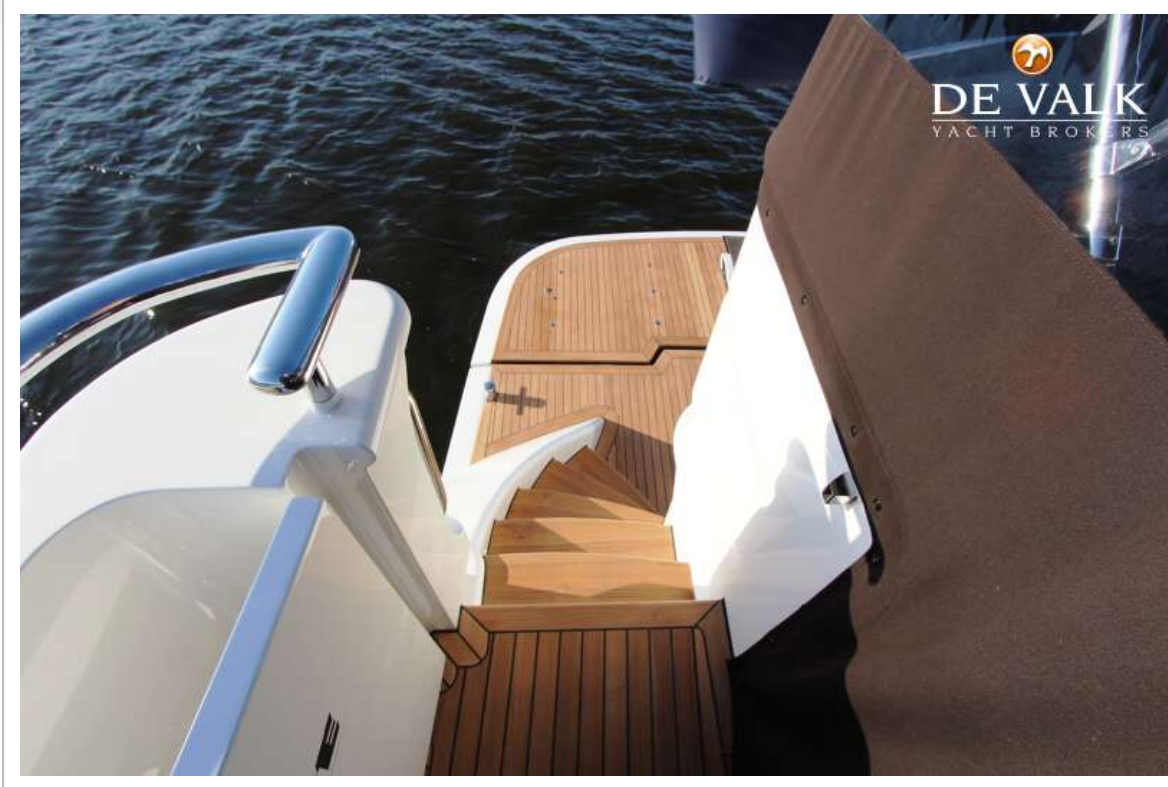


# VIVANTE 55

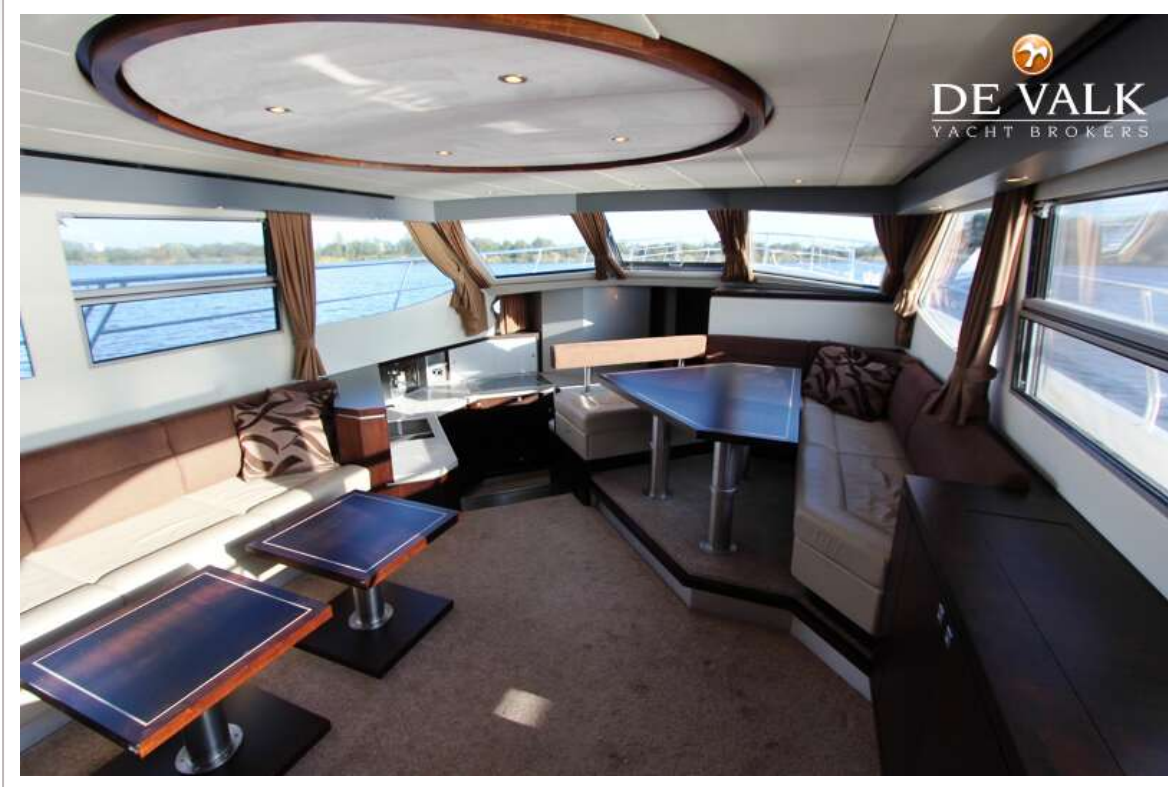




# VIVANTE 55



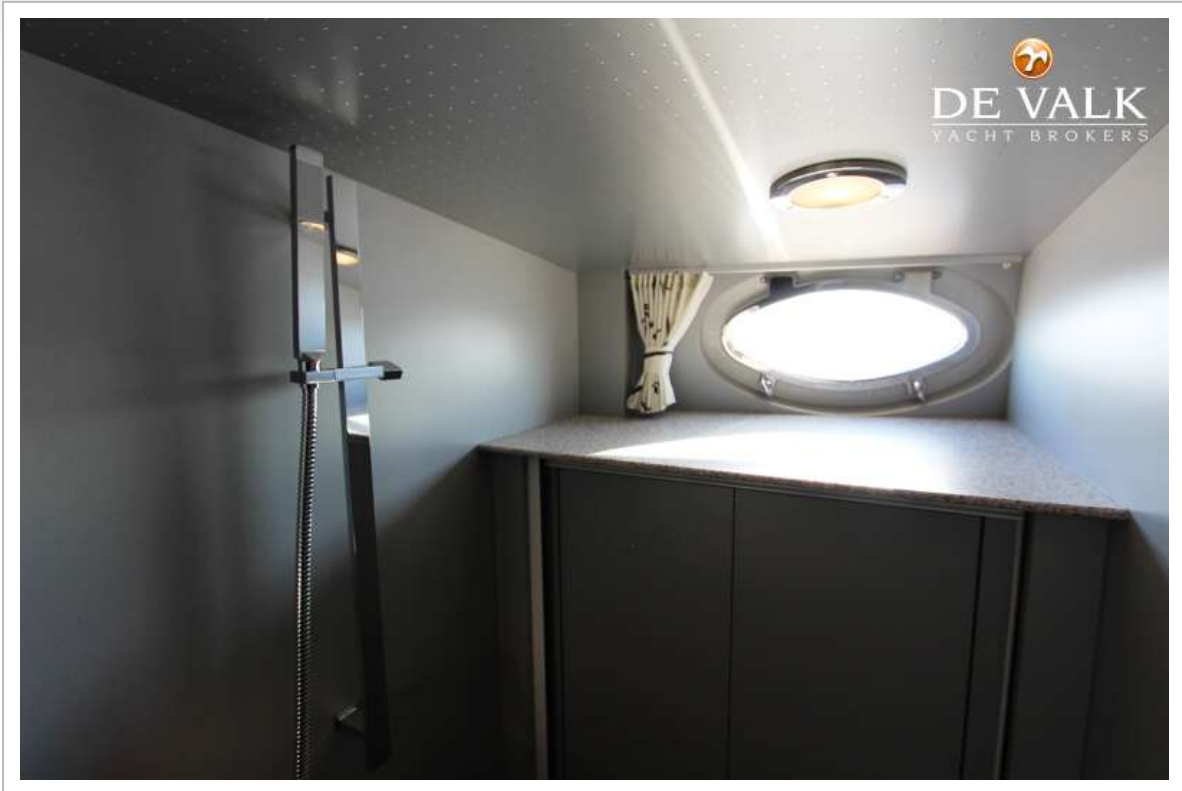
# VIVANTE 55



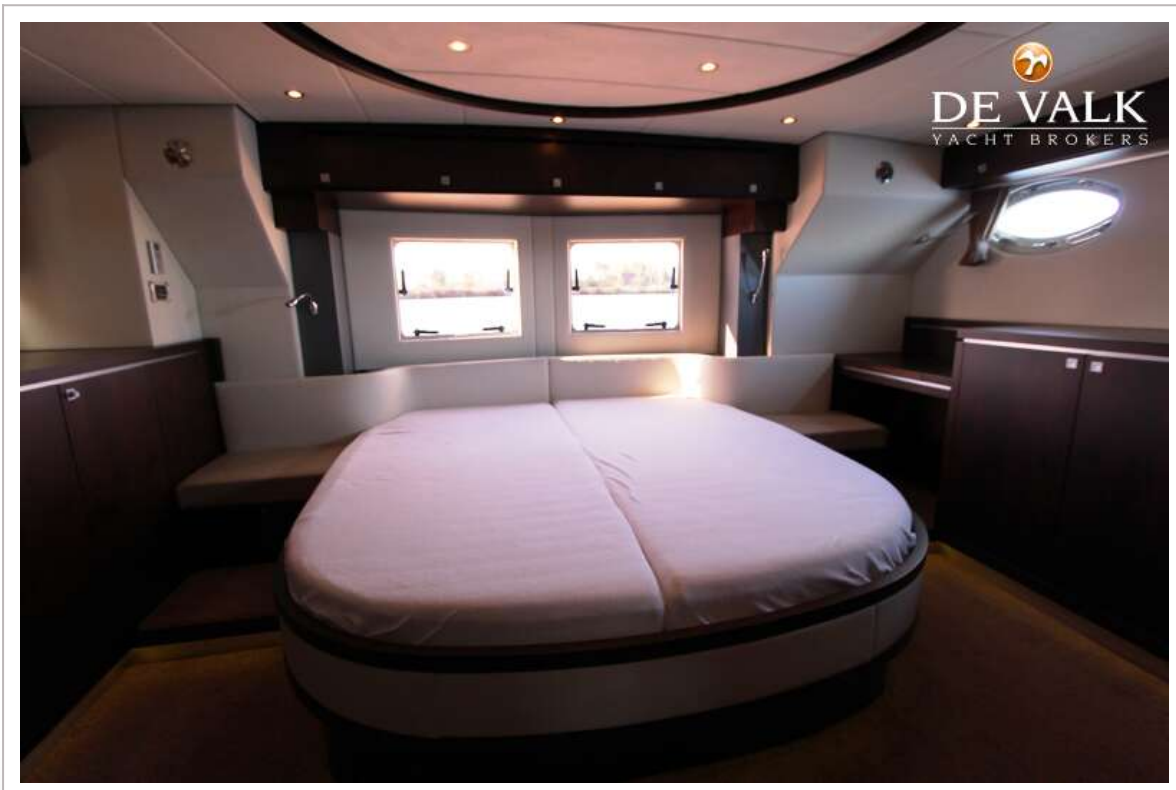
# VIVANTE 55

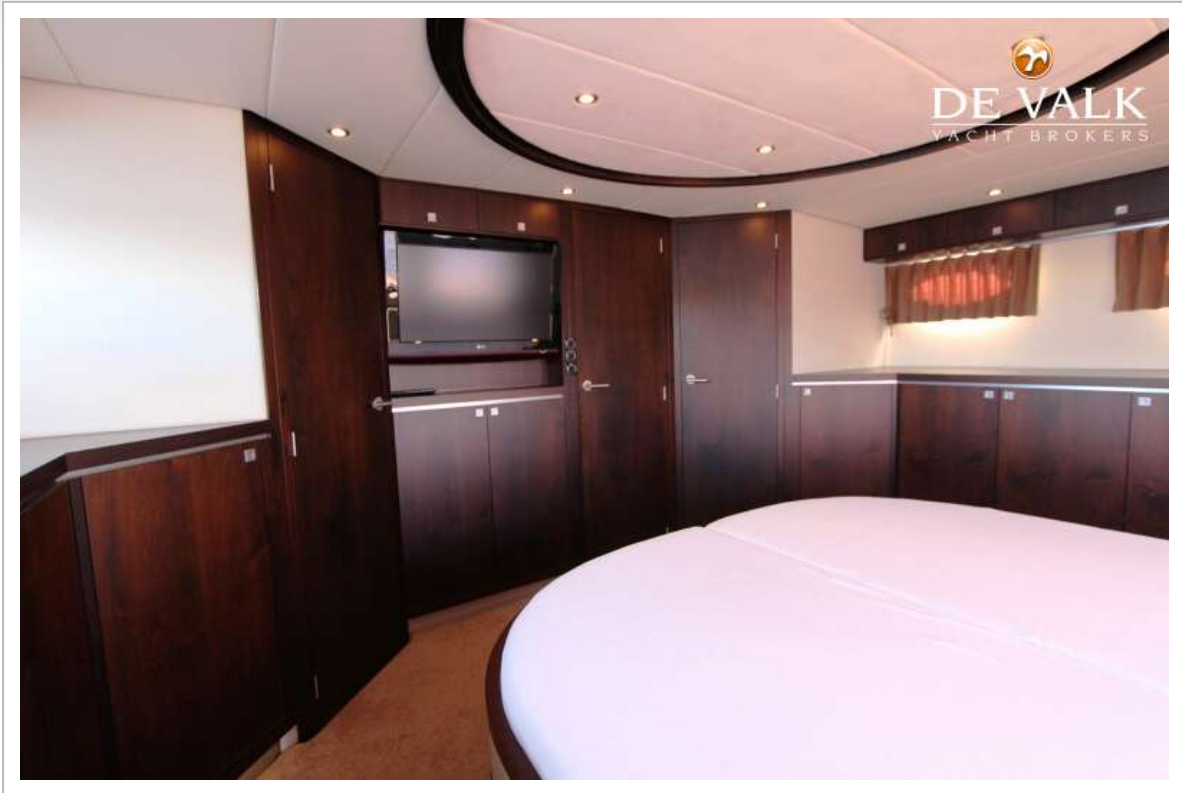






# VIVANTE 55





# VIVANTE 55





