



PRINCESS 41

PRINCESS 41

BROKER'S COMMENTS

The Princess 41, a well known desing. Looking at the famous range of the Princess yachts, the Princess 41 is one of the most populair ever seen. The 3 cabin lay out makes her the perfect family yacht. She will be auctioned on October 10th 2018 in cooperation with Schipveiling and BVA Auctions. For further details and viewing days go to: <http://bit.ly/Princess41Auction> starting price of the auction EUR. 10,000, offers can be made from October 3th 2018 on the website of BVA..

Peter van Diggele

SPECIFICATIONS

Dimensions	12.45 x 3.96 x 0.96 (m)	Builder	Marine Projects
Built	1980	Cabins	2
Material	GRP	Berths	4
Engine(s)	2 x Volvo Penta TAMD 60 B diesel	Hp/Kw	2 x 235.00 (hp), 172.73 (kw)
Asking price	sold (VAT)	Lying	at sales office

CONTACT

Sales office	De Valk Loosdrecht B.V.	Telephone	+31 (0)35 582 90 30
Address	't Breukeleveense Meentje 6 1231LM Loosdrecht / Wijdmeren NL	E-mail	loosdrecht@devalk.nl

DISCLAIMER

These particulars are given in good faith as supplied but cannot be guaranteed.



GENERAL

Model	PRINCESS 41
Type	motor yacht
LOA (m)	12,45
Beam (m)	3,96
Draft (m)	0,96
Air draft (m)	3,43
Headroom (m)	1,95
Year built	1980
Builder	Marine Projects
Country	Great Britain
Designer	John Bennett
Displacement (t)	9
Hull material	GRP
Hull colour	white
Hull shape	deep-V
Superstructure material	GRP
Rubbing strake	rubber
Deck material	GRP
Window frame	aluminium
Window material	tempered glass
Portholes	aluminium
Flybridge	yes
Flybridge cover	yes
Flybridge suncover	yes
Radar arch	yes
Fuel tank (litre)	2x 550
Freshwater tank (litre)	500
Wheel steering	hydraulic
Inside helm position	yes
Flybridge helm position	yes



ACCOMMODATION

Cabins	2
Berths	4
Aft deck	yes
Saloon	yes
Headroom saloon (m)	1,95
Heating	diesel ducted hot air Webasto, 2008
Aft Cabin	yes
Opening door to aft deck	yes
Galley	yes
Countertop	yes
Sink	yes
Cooker	yes
Fridge	yes
Hot water system	220V + engine
Water pressure system	electrical
Owners cabin	double bed
Bathroom	yes
Toilet	en suite
Toilet system	electric
Shower	yes
Guest cabin 1	twin single
Bathroom	yes
Toilet	yes
Toilet system	manual
Shower	yes
Guest cabin 2	Workspace

MACHINERY

No of engines	2
Make	Volvo Penta



PRINCESS 41

Type	TAMD 60 B
HP	235,00
kW	172,73
Fuel	diesel
Maximum speed (kn)	22
Cruising speed (kn)	15
Consumption (l/hr)	12
Engine hours	945
Engine cooling system	freshwater heat exchanger
Drive	shaft
Engine controls	bowden cable
Gearbox	Twin Disc
Bowthruster	electric (2007)
Exhaust	watercooled
Propeller shaft material	stainless steel
Manual bilge pump	yes
Electrical installation	12/220 Volt
Generator	wet exhaust (2007)
Batteries	yes
Battery charger	yes
Inverter	yes
Shorepower	yes
Trimtabs	yes

NAVIGATION

Compass	Plastimo
Depth sounder	Eagle

EQUIPMENT

Cockpit cover	yes
Bathing platform	yes



Boarding ladder	yes
Anchor	yes
Anchor chain	60 m.
Windlass	electrical Lofrans
Sea railing	stainless steel
Grab rail (superstructure)	yes
Wiper	yes
Horn	yes
Radio-cd player	yes



PRINCESS 41



BROKERAGE | CHARTER | BERTHS | FINANCE | INSURANCE | YACHT MANAGEMENT



DE VALK
YACHT BROKERS



**This yacht will be auctioned,
for further details please visit www.devalk.nl**

**Dit schip zal worden geveild,
voor meer informatie gaat u naar www.devalk.nl**

**Dieses Schiff wird versteigert,
für weitere informationen besuchen Sie www.devalk.nl**

WWW.DEVALK.NL



DE VALK
YACHT BROKERS



PRINCESS 41



PRINCESS 41



PRINCESS 41



PRINCESS 41



PRINCESS 41



PRINCESS 41



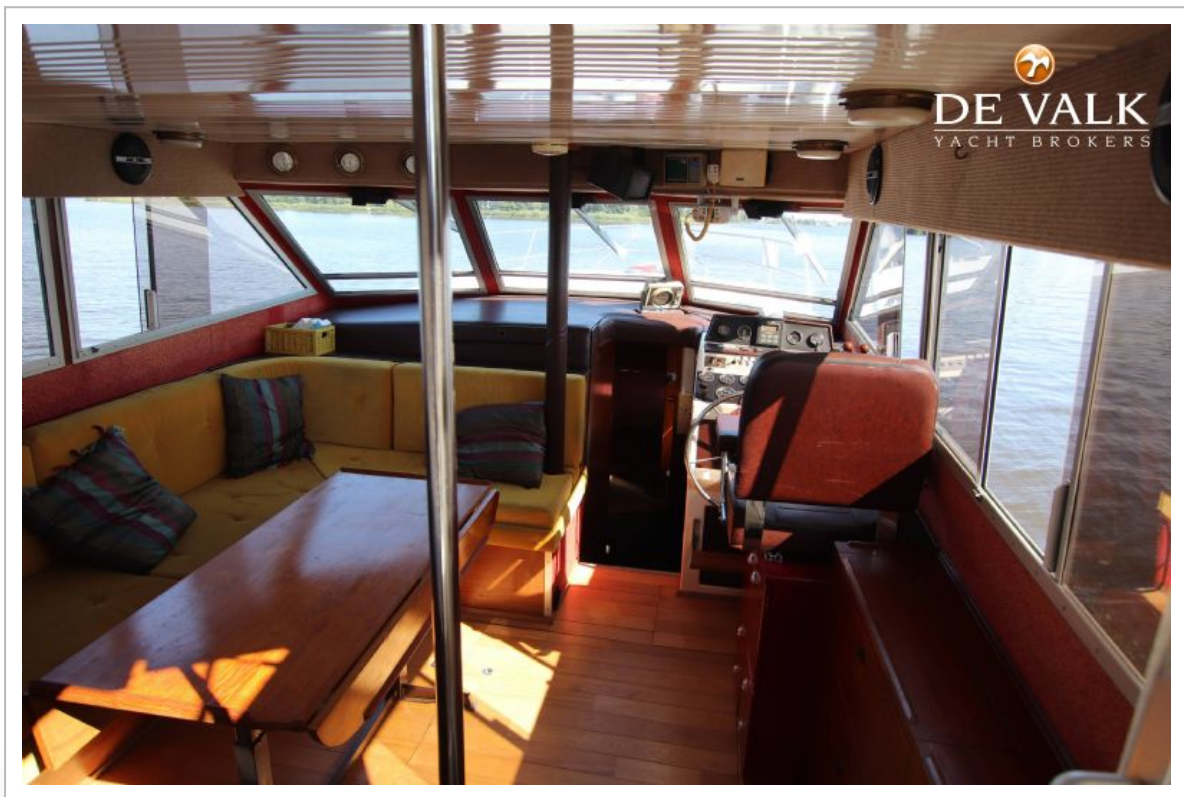
PRINCESS 41



PRINCESS 41



PRINCESS 41



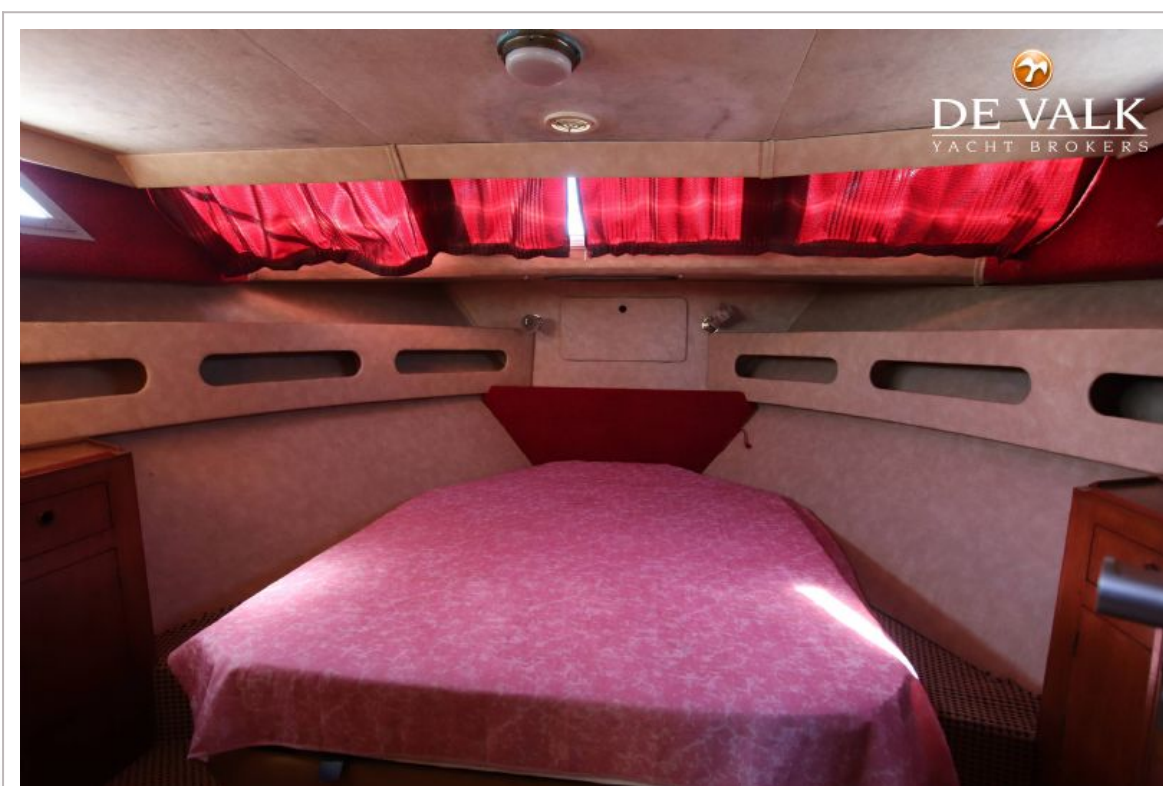
PRINCESS 41

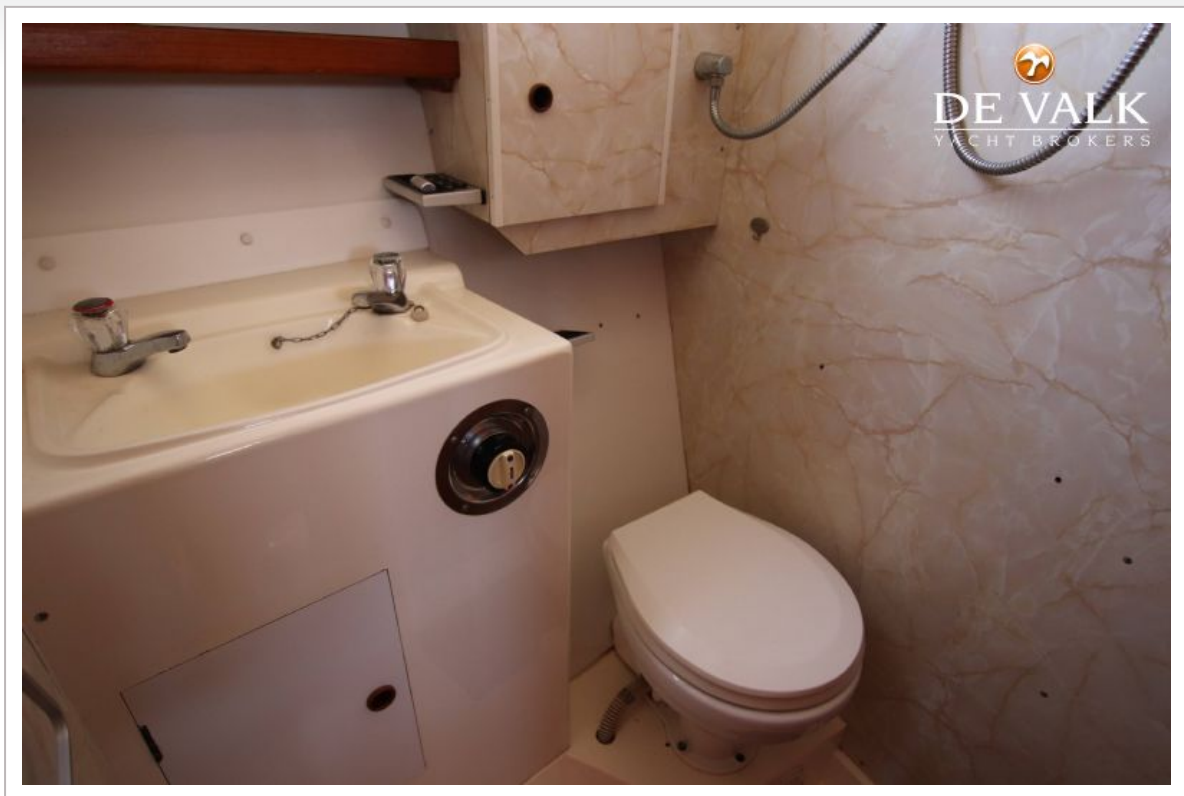


PRINCESS 41

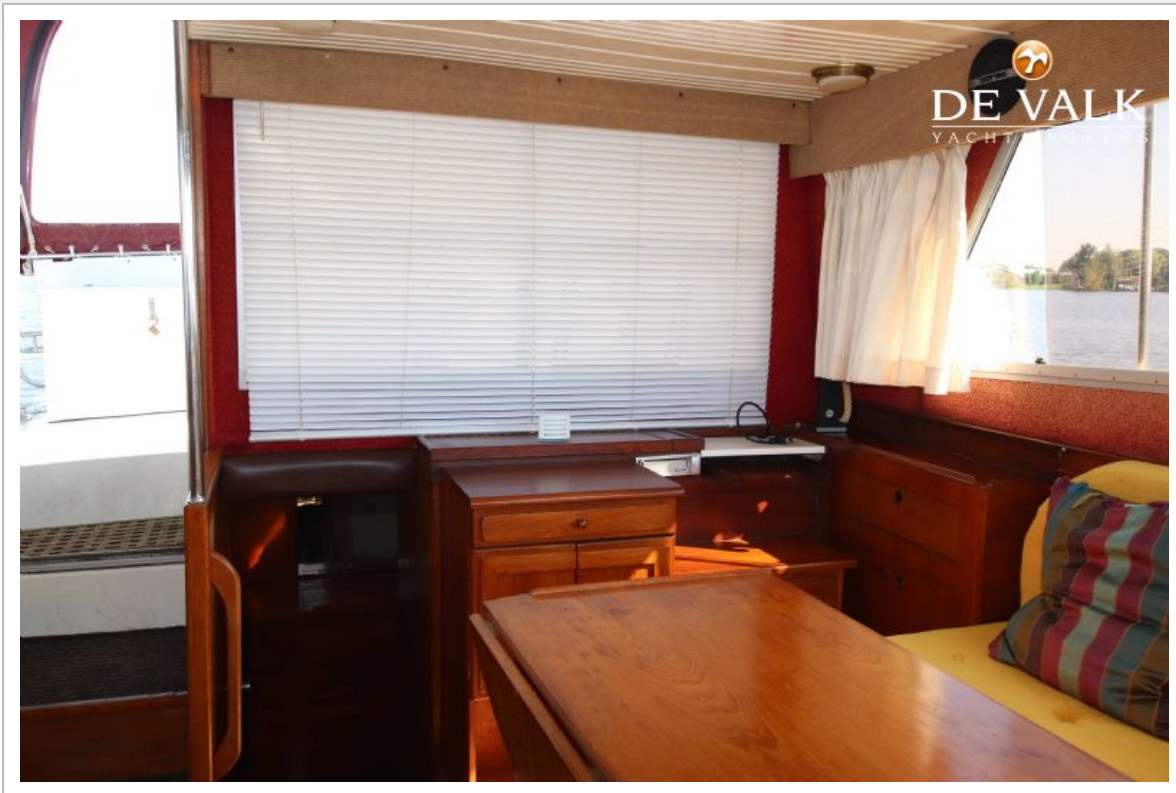


PRINCESS 41





PRINCESS 41



PRINCESS 41

