



DE VALK
YACHT BROKERS



FUNCRAFT 1300



DE VALK
YACHT BROKERS

BROKER'S COMMENTS

Popular familycruiser with cherry wood interior. Roomy ownerscabin with French bed, seperate shower and toilet facilities. Guestcabin with large V-bed and a lot of storage room..Vetus Deutz 159hp diesel engine with only 43 engine hours, electric bow- and sternthruster.

Peter van Diggele

SPECIFICATIONS

Dimensions	13.00 x 4.25 x 1.10 (m)	Builder	Funcraft - Harderwijk
Built	2001	Cabins	2
Material	Steel	Berths	4
Engine(s)	1 x Deutz DT 64 Diesel	Hp/Kw	159.00 (hp), 116.87 (kw)
Asking price	sold (VAT)	Lying	at sales office

CONTACT

Sales office	De Valk Loosdrecht B.V.	Telephone	+31 (0)35 582 90 30
Address	't Breukeleveense Meentje 6 1231LM Loosdrecht / Wijdmeren NL	E-mail	loosdrecht@devalk.nl

DISCLAIMER

These particulars are given in good faith as supplied but cannot be guaranteed.



GENERAL

Model	FUNCRAFT 1300
Type	motor yacht Motor yacht
LOA (m)	13,00
Beam (m)	4,25
Draft (m)	1,10
Air draft (m)	2,90
Headroom (m)	2,35
Year built	2001
Builder	Funcraft - Harderwijk
Country	The Netherlands
Displacement (t)	11
Hull material	steel
Hull colour	blue
Hull shape	Hard chine
Superstructure material	Steel
Rubbing strake	Steel
Deck material	Steel
Deck finish	anti-slip paint
Window frame	Aluminum
Window material	Glass Rhigo
Portholes	Aluminum Gebo
Radar arch	Collapsible Stainless steel
Fuel tank (litre)	800
Level indicator (fuel tank)	yes
Freshwater tank (litre)	400
Level indicator (freshwater)	yes
Wheel steering	Hydraulic
More info on paintwork	Painted in 2013

ACCOMMODATION



FUNCRAFT 1300

Cabins	2
Berths	4
Interior	Cherry Spacious
Saloon	Spacious living area with 2,35m headroom
Headroom saloon (m)	yes
Heating	Central heating Webasto
Aft Cabin	Master bedroom
Dinette	yes
Galley	yes
Countertop	yes
Sink	Stainless steel
Cooker	electric Wallas Ceran
Oven	Agon 24 Volt
Fridge	with freezer compartment Isotherm
Hot water system	220v Isotemp boiler 15L
Water pressure system	electrical
Owners cabin	french bed
Wardrobe	hanging and drawers
Bathroom	en suite
Toilet	En suite
Toilet system	Manual Raske
Wash basin	at the toilet
Shower	En suite
Guest cabin 1	twin single V-berth
Wardrobe	hanging and drawers

MACHINERY

No of engines	1
Make	Deutz
Type	DT 64
HP	159,00



kW	116,87
Fuel	diesel
Maximum speed (kn)	10
Engine hours	43
Engine cooling system	freshwater heat exchanger
Drive	shaft
Engine controls	mechanical Vetus
Gearbox	Hydraulic ZF Hurth
Bowthruster	Electric 24V
Sternthruster	Electric 24V
Propeller shaft material	Stainless steel
Electrical installation	24/230V
Start battery	yes
Service battery	yes
Battery charger	Victron 24V/15A
Shorepower	with cable
Insulation transformer	yes

EQUIPMENT

Cockpit cover	yes
Bathing platform	yes
Anchor	Not in function
Davits	stainless steel
Davits controls	manual
Sea railing	Stainless steel
Horn	yes



FUNCRAFT 1300



FUNCRAFT 1300



FUNCRAFT 1300



FUNCRAFT 1300



FUNCRAFT 1300



FUNCRAFT 1300



FUNCRAFT 1300



FUNCRAFT 1300



FUNCRAFT 1300



FUNCRAFT 1300



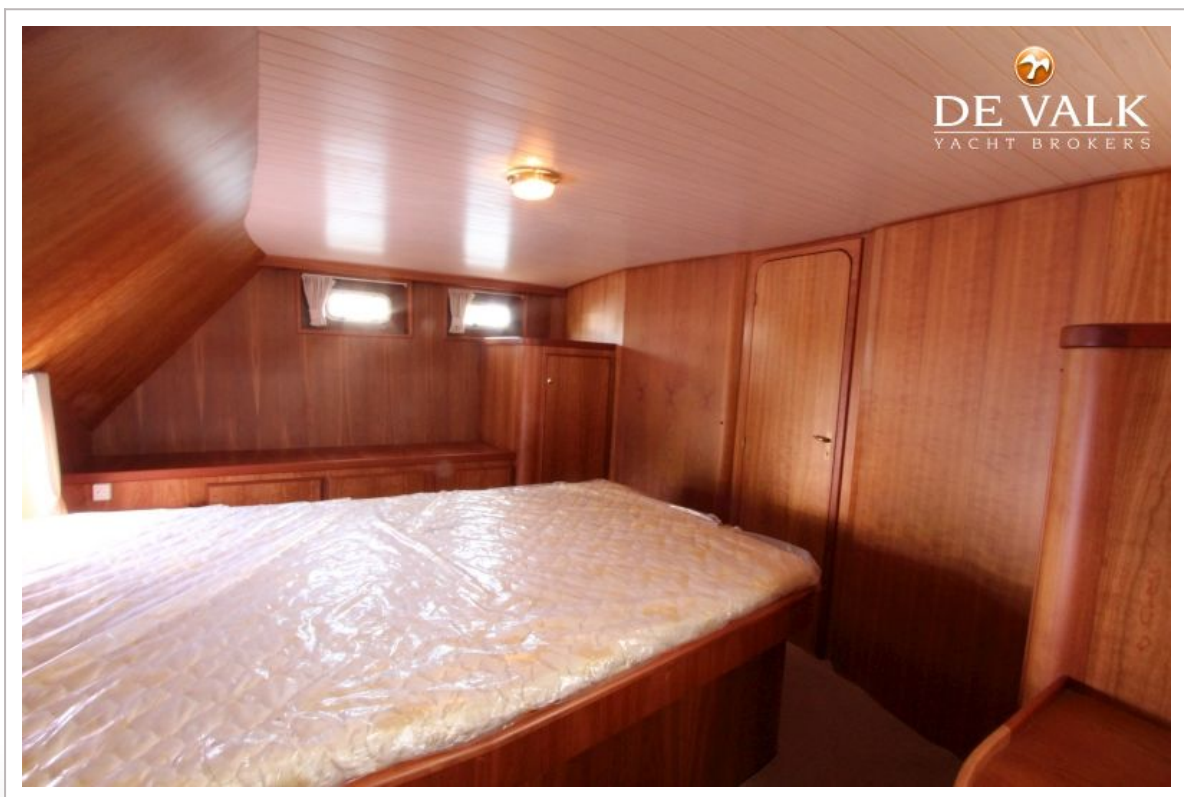
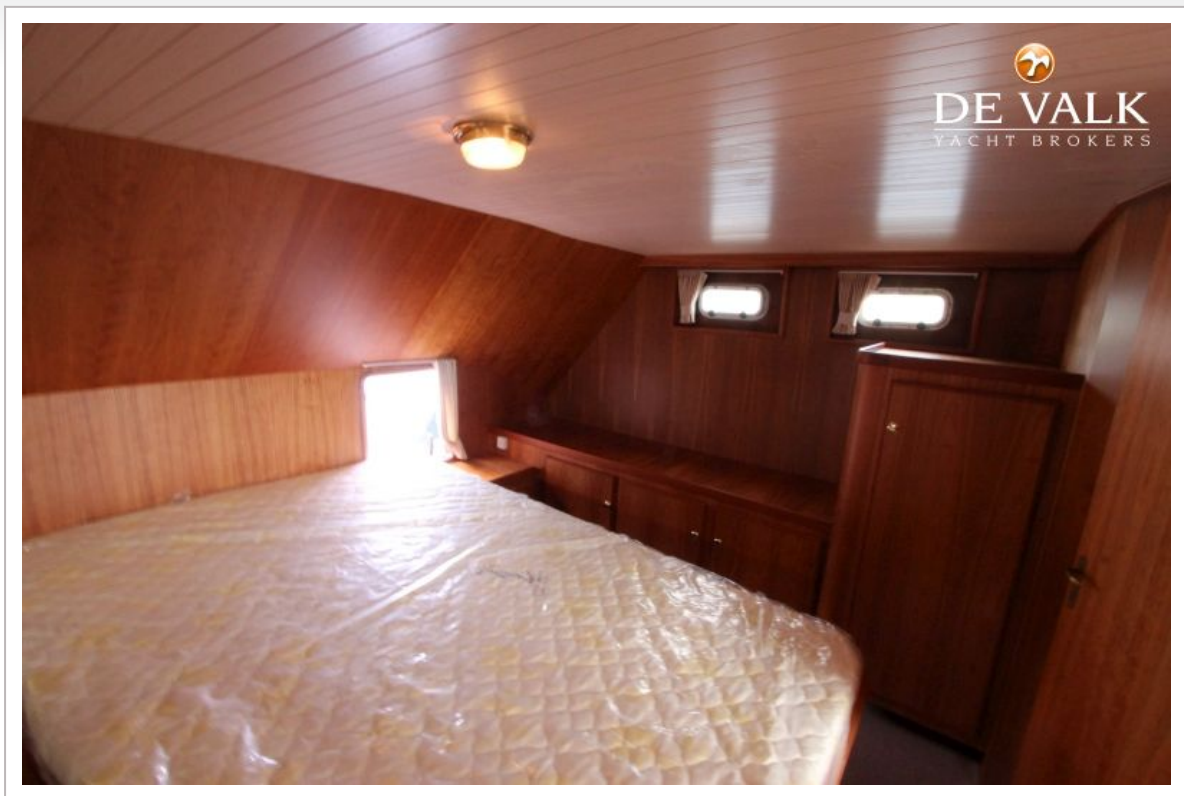
FUNCRAFT 1300



FUNCRAFT 1300



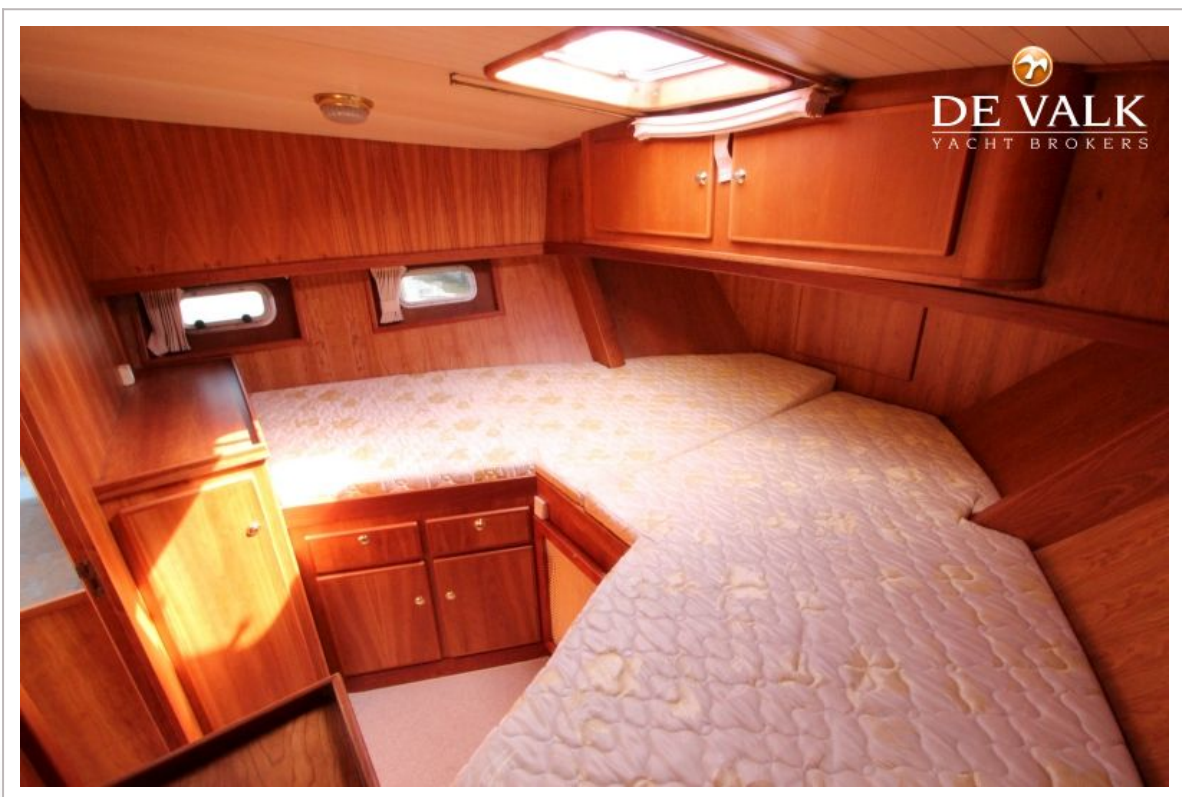
FUNCRAFT 1300



FUNCRAFT 1300



FUNCRAFT 1300



FUNCRAFT 1300

