



DE VALK
YACHT BROKERS



VANDUTCH 40



DE VALK
YACHT BROKERS

BROKERAGE | CHARTER | BERTHS | FINANCE | INSURANCE | YACHT MANAGEMENT

BROKER'S COMMENTS

Composite powerboat VanDutch 40. Designed by Frank Mulder. Spacious open lounge area with sunbed, modern styled interior, with hydraulic table that can be transformed into a large bed for two persons. Perfect helmposition in de lee of the windscreen. Offered in good condition! Minimum airdraft 2,30 m.

Peter van Diggele

SPECIFICATIONS

Dimensions	12.08 x 3.50 x 0.82 (m)	Builder	Zaadnoordijk
Built	2009	Cabins	1
Material	Composite	Berths	2
Engine(s)	2 x Yanmar 2BY260 Diesel	Hp/Kw	2 x 260.00 (hp), 191.10 (kw)
Asking price	sold (VAT)	Lying	at sales office

CONTACT

Sales office	De Valk Loosdrecht B.V.	Telephone	+31 (0)35 582 90 30
Address	't Breukeleveense Meentje 6 1231LM Loosdrecht / Wijdmeren NL	E-mail	loosdrecht@devalk.nl

DISCLAIMER

These particulars are given in good faith as supplied but cannot be guaranteed.



GENERAL

Model	VANDUTCH 40
Type	motor yacht Motor yacht
LOA (m)	12,08
Beam (m)	3,50
Draft (m)	0,82
Air draft (m)	2,30
Headroom (m)	1,50
Year built	2009
Builder	Zaadnoordijk
Country	The Netherlands
Designer	Frank Mulder
Displacement (t)	7,5
CE norm	C
Hull material	composite
Hull colour	grey
Hull shape	Deep-V
Deck material	Composite
Deck finish	teak-imitation
Window frame	Stainless steel
Window material	yes
Insulation	yes
Fuel tank (litre)	600
Level indicator (fuel tank)	yes
Freshwater tank (litre)	115
Level indicator (freshwater)	yes
Blackwater tank (litre)	24
Wheel steering	Hydraulic
More info on hull	Versterkt met Kevlar
More info on paintwork	2 components DD-coat



ACCOMMODATION

Cabins	1
Berths	2
Interior	Modern black/white
Layout	yes
Open cockpit	Large sunbed and seats in cockpit
Saloon	yes
Headroom saloon (m)	1,5
Dinette	yes
Dinette to convert into berth	yes
Galley	yes
Countertop	Corian
Sink	Stainless steel
Microwave	yes
Fridge	150L
Hot water system	220v Boiler 20 L
Water pressure system	electrical
Owners cabin	double bed
Bathroom	yes
Toilet	yes
Toilet system	Electric
Wash basin	yes
Shower	yes

MACHINERY

No of engines	2
Make	Yanmar
Type	2BY260
HP	260,00
kW	191,10
Fuel	diesel



Year installed	2009
Maximum speed (kn)	32
Engine hours	540
Engine cooling system	freshwater heat exchanger
Drive	Z-drive
Engine controls	electrical
Bowthruster	Max Power
Sternthruster	Max Power
Exhaust	Watercooled
Propeller shaft material	Stainless steel
Electric bilge pump	4x
Electrical installation	12/230V
Start battery	yes
Service battery	yes
Battery monitor	Mastervolt
Battery charger/inverter	Mastervolt 12/2000-100A batterycharger/inverter
Shorepower	with cable
Trimtabs	QL

NAVIGATION

Electric compass	Via GPS
Depth sounder	Raymarine St-60 Tri-data
Log	Raymarine St-60 Tri-data
Autopilot	Raymarine ST6002
Rudder angle indicator	yes
Radar/GPS/plotter	Raymarine C-120 color

EQUIPMENT

Fixed windscreen	yes
Bimini	yes
Cockpit cushions	yes



Cockpit table	yes
Bathing platform	With Estec-teak
Boarding ladder	stainless steel
Deck shower	yes
Anchor	Delta
Anchor chain	Inox
Windlass	electrical Lewmar
Horn	yes
TV	JVC Flatscreen 19"
Radio-cd player	Pioneer with mp3
Cockpit speakers	yes
Extra info	Pop-up aluminium cleats



VANDUTCH 40



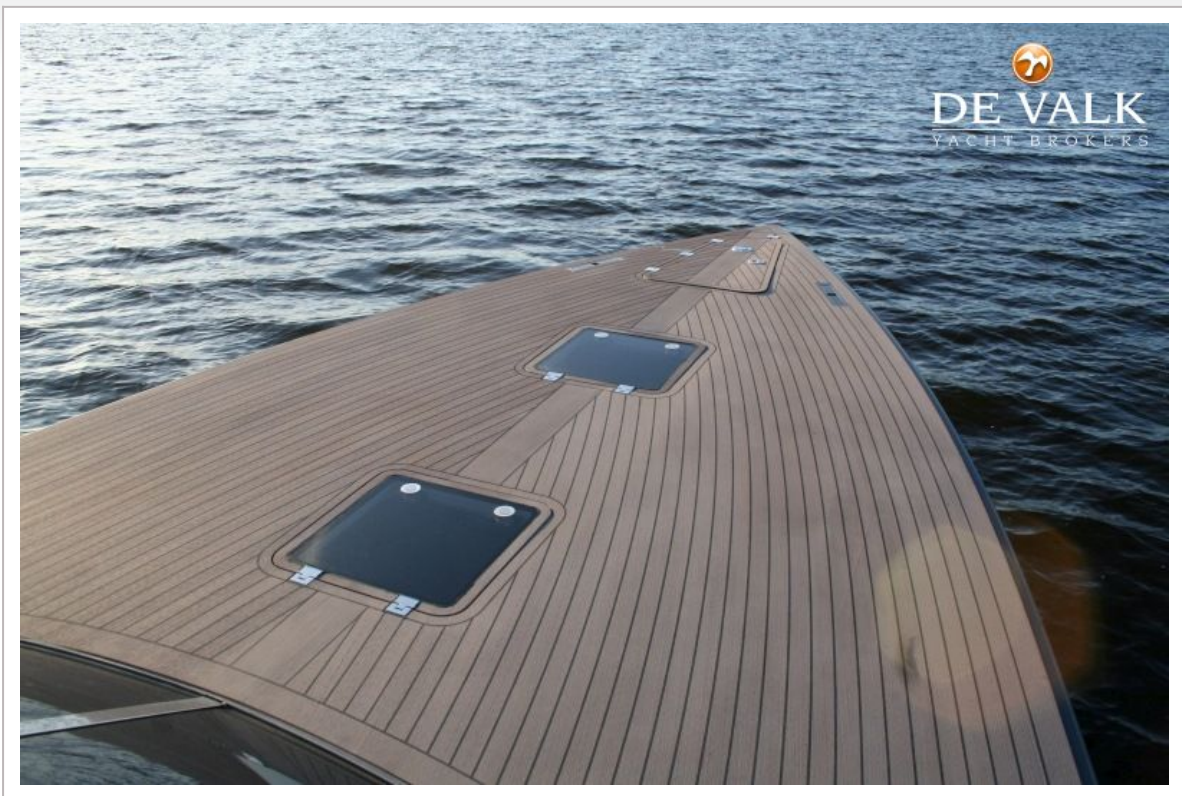
VANDUTCH 40



VANDUTCH 40



VANDUTCH 40



VANDUTCH 40



VANDUTCH 40



VANDUTCH 40



VANDUTCH 40



VANDUTCH 40



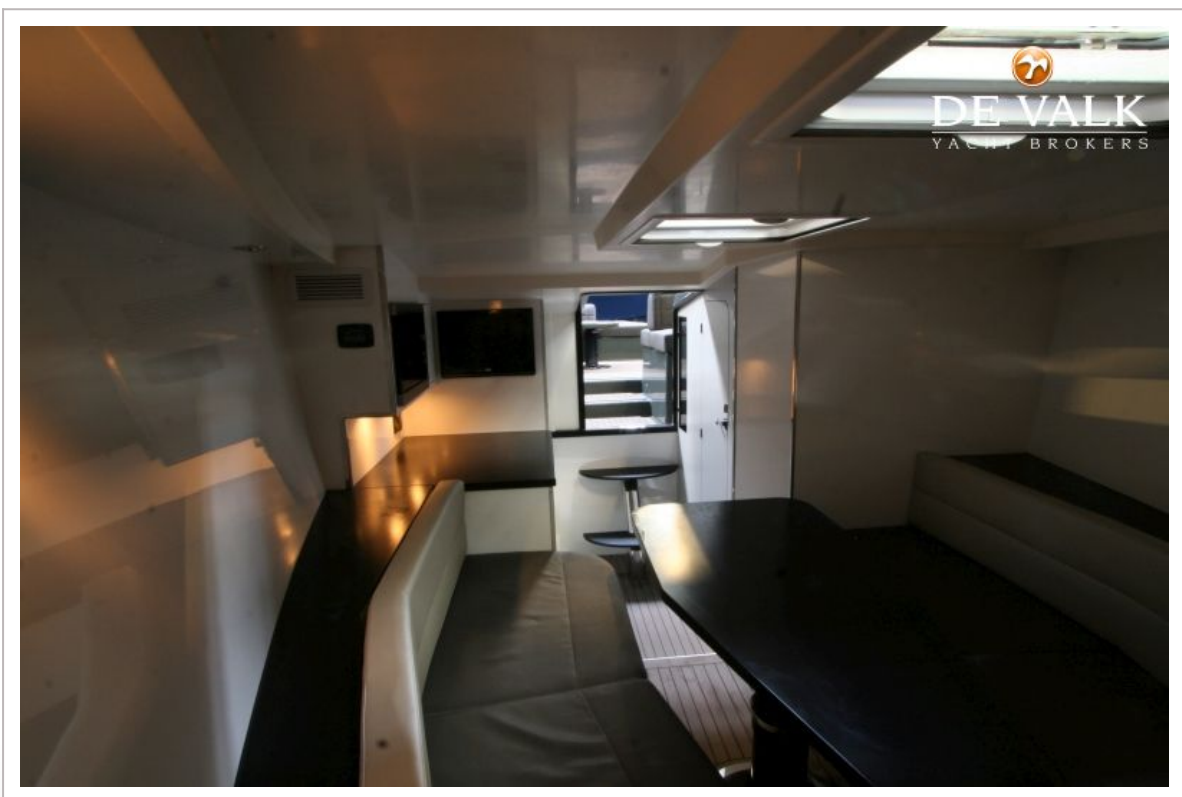
VANDUTCH 40



VANDUTCH 40



VANDUTCH 40



VANDUTCH 40



VANDUTCH 40





VANDUTCH 40



VANDUTCH 40



VANDUTCH 40

