



STEVENS COLUMBUS KOTTER 16.40

BROKER'S COMMENTS

Columbus kotter. Spacious steel motor yacht, well suited for cruising at open sea or French water canals. Teak finished interior. Comfortable 3 cabin lay-out, equipped for long stay aboard/liveaboard. Central heating, Flexi-teak on deck, bowthruster, generator. Owner has not saved any costs to maintain the yacht in top condition.

Jan-Ward van Dantzig

SPECIFICATIONS

Dimensions	16.40 x 4.85 x 1.20 (m)	Builder	Stevens Shipyards
Built	1997	Cabins	3
Material	Steel	Berths	7
Engine(s)	1 x DAF DH 825 diesel	Hp/Kw	165.00 (hp), 121.28 (kw)
Asking price	sold (VAT)	Lying	elsewhere / Not at sales office

CONTACT

Sales office	De Valk Sint Annaland B.V.	Telephone	+31 (0)166 601 000
Address	Koelhuisweg 4 4697 RM Sint Annaland NL	E-mail	sintannaland@devalk.nl

DISCLAIMER

These particulars are given in good faith as supplied but cannot be guaranteed.



GENERAL

Model	STEVENS COLUMBUS KOTTER 16.40
Type	motor yacht
LOA (m)	16,40
Beam (m)	4,85
Draft (m)	1,20
Air draft (m)	2,95
Headroom (m)	2,00
Year built	1997
Builder	Stevens Shipyards
Country	The Netherlands
Displacement (t)	28
CE norm	NA
Hull material	steel
Hull colour	blue
Hull thickness (mm)	6
Hull shape	multi hard chine
Keel type	Bottom of keel : 20 mm
Superstructure material	steel Painted in Alexseal in 2014
Superstructure (mm)	5
Rubbing strake	stainless steel
Deck material	steel Painted in Alexseal in 2014
Deck finish	cork Marinedeck (applied in 2000 - slightly sanded in 2023)
Superstructure deck finish	non-skid paint Painted in Alexseal in 2014
Cockpit deck finish	cork Marinedeck (applied in 2000 - slightly sanded in 2023)
Antifouling (year)	End of 2023
Dorades	Stainless steel
Window frame	aluminium
Window material	glass SB & PS 2 x sliding window and middel front can be opened
Deckhatch	Moonlight with screens & shades
Portholes	aluminium Moonlight



Insulation	yes
Fuel tank (litre)	steel 900 - Port side in engine room
Fuel tank 2 (litre)	steel 900 - Starboard side in engine room
Freshwater tank (litre)	steel 2000
Level indicator (freshwater)	yes
Blackwater tank (litre)	steel 300 - under the galley floor
Blackwater tank extraction	pump Alpha - electric
Wheel steering	hydraulic Vetus
Inside helm position	Vetus stainless steel with teak steering wheel
Outside helm position	hydraulic Vetus stainless steel with teak steering wheel
More info on hull	Hull sandblasted in 2005 and painted in Alexseal in 2014
More info on paintwork	Painted in Alexseal in 2014
Extra info	Stainless steel antenna arch can be manual lowered
Extra info	Marinedeck (cork - applied on the deck) is easy to maintain and has the great advantage that it has strong sound-absorbing properties and also provides good insulation against the cold in winter.

ACCOMMODATION

Cabins	3
Berths	7
Interior	teak Carpentry done by Muilwijk Ship Interiors (NL)
Floor	teak and holly
Aft deck	yes
Pilot house/deck saloon	Dark blue upholstery & blue curtains & dimmable saloon lights
Saloon	Spacious saloon with U-shaped settee with blue upholstery
Headroom saloon (m)	2,00
Heating	central heating Kabola EL01B3H TC 24 Volt with an Elco Econom 2000 (2001)
Heating 2	electric 220V Several installed throughout the interior
Chart table	On starboard side in the steering house saloon
Aft Cabin	Very spacious (with an escape hatch above the bed)



Dining room	U-shaped, next to the galley, with blue upholstery
Dinette	In steering house saloon, enlargable varnished teak table
Opening door to aft deck	yes
Galley	On starboard side - Headroom : 2,02 m
Countertop	yes
Sink	stainless steel 2 x
Cooker	induction Whirlpool Schott Ceran - 4 x burner
Oven	Samsung Smart Oven
Extractor	220 Volt
Fridge	Front loader Bauknecht with a compressor (in the gallery)
Freezer	Small Zanker freezer (loose installed in the laundry room)
Hot water system	220V or central heating Liter stainless steel Sigmar boiler
Water pressure system	electrical With a 20 Liter Wilo pressure vessel (new in 2014)
Crockery	Complete, but without cutlery
Owners cabin	French bed In aft cabin - Headroom : 2,08 m - with blue carpet
Bed length (m)	2,05 x 1,55
Wardrobe	hanging/drawers/shelves
Bathroom	en suite Headroom : 2,05 m
Toilet	en suite
Toilet system	electric
Wash basin	in the bathroom
Shower	en suite With sliding doors - Headroom : 2,08 m
Extra info	Slats under the Neptune mattresses & large storage under bed
Guest cabin 1	French bed In front cabin - Headroom : 2,05 m
Bed length (m)	2,00 x 1,40
Wardrobe	drawers and shelves
Bathroom	yes
Toilet	separate Headroom : 2,05 m
Toilet system	electric
Wash basin	In the shower bathroom
Shower	separate Headroom : 2,05 m - with a loose Thetford Porta Potti toilet



Extra info	Slats under the Neptune mattresses
Guest cabin 2	double bed + single bed Under the steering house saloon - Headroom : 1,25 m
Bed length (m)	1,95 x 1,20 & 1,95 x 0,80
Wardrobe	hanging and shelves
Extra info	Neptune mattresses
Washing machine	Beko WMB 61632 Green Line in the laundryroom (6 Kg-1600 RPM-A++)
Dryer	Beko DCU723CBXT in the laundryroom (1-7 Kg / B)
Extra info	Headroom in laundryroom & in hallway to aft cabin : 2,08 m
Extra info	Loose water softener, to connect before filling up watertank

MACHINERY

No of engines	1
Make	DAF
Type	DH 825
HP	165
kW	121.28
Fuel	diesel
Year installed	1997
Maximum speed (kn)	8,5
Cruising speed (kn)	7
Consumption (l/hr)	8,5
Engine hours	782
Engine cooling system	closed keelcooling
Drive	shaft
Shaft seal	yes
Engine controls	bowden cable 2 x
Gearbox	hydraulic PRM Coventry
Bowthruster	electric Side Power (2x 4-bladed propeller) with 2 control-joysticks
Exhaust	dry



Propeller type	fixed
Propeller blades	4
Propeller shaft material	stainless steel
Shaft lubrication	grease
Manual bilge pump	yes
Electric bilge pump	2 x Johnson (1 x automatic)
Bilge alarm	yes
Electrical installation	12 & 24 & 220 Volt
Generator	Mitsubishi 10 KVA - in isolated box in engineroom - keel cooling
Running hours generator	800
Start battery	2 x Varta AGM 260 Ah
Service battery	4 x Varta AGM 260 Ah
Generator battery	1 x SMF Maintenance free 100 Ah
Bowthruster battery	yes
Battery monitor	Battery Watch & Mastervolt Battery Monitor BTM-I
Battery charger	1 x Mastervolt (12 Volt)
Battery charger/inverter	Mastervolt Combi 24/2000/60
Diode battery combiners	yes
Shorepower	with cable Marinco connector
Insulation transformer	Victron Isolation Transformer 7000
Extra info	Mastervolt Control (Inverter/charger + AC Power)

NAVIGATION

Electric compass	yes
Multi control display	Raytheon ST60 Multi (outside)
Depth sounder/log	Raytheon ST60 Tridata (inside)
VHF	Raymarine Ray49E with a mic (outside)
VHF handheld	Icom BC-120
Autopilot	Raytheon ST6000+ (inside) & Raytheon ST7000+ (display outside)
Rudder angle indicator	Via autopilot displays



Plotter/GPS	Raymarine C90W (outside)
Wifi antenna	yes
Electronic chart(s)	yes
Navigation lights	yes

EQUIPMENT

Fixed windscreen	yes
Sprayhood	Dark blue Headroom : 2,05 m
Cockpit cover	dark blue, all panels on the aft and on both sides can be removed (with zippers) or rolled up
Bimini	The cockpit cover can be used as a bimini. On the pictures, made when the boat was cruising, you can see a bimini, which isn't available anymore
Winter cover	For over the cockpit
Window cover	White covers (sun protection) & dark and isolated covers (for the winter period). These can be mounted around the steering house
Cockpit cushions	4 x dark blue Comfort Seat
Cockpit table	1 x loose, high and expandable teak table & 1 x loose, small & low teak drinks table
Cockpit chairs	2 x folding teak Destiny chairs with blue cushions & 4 x folding plastic chairs with blue cushions & 2 x folding and low teak chairs
Bathing platform	With teak slatts
Boarding ladder	stainless steel With teak steps
Deck shower	At the bathing platform
Anchor	Fortress (aluminium)
Anchor chain	yes
Windlass	electrical Lofrance Falcon with buttons on the front deck
Capstan	On the windlass
Deck wash	Alpha pump & deck-connection, not used, functioning unknown
Davits	stainless steel
Davits controls	manual



Sea railing	stainless steel
Grab rail (superstructure)	stainless steel
Railing side opening gates	On both sides
Pushpit	Stainless steel
Lifebuoy	Round
Wiper	5 x
Horn	electric
Fenders	yes
Mooring lines	yes
Spare parts	yes
TV	1 x (saloon) & 1 x Sony (aft cabin)
Radio-cd player	Alpine
Speakers in salon	Sony & Pioneer
Speakers in cabin	yes
Clock - barometer	yes
Fire extinguisher	& a fire blanket
Latest extinguisher survey	Need to be checked / renewed
Extinguisher in engine room	Needs to be checked / renewed
Extra info	Teak storage box on bow for anchor rope, also be used as table
Extra info	Removable & automatic Meaco DD8L Junior de-humidifier at inside
Extra info	In 2024 the port side diesel tank was professional cleaned and 2 inspection hatches were mounted on the side of this tank. This tank is filled with approx. 550 litre diesel. The starboard diesel tank wasn't cleaned, because there is already enough diesel in the port side tank. The valves from the starboard side tank are closed and hasn't been used, but still filled up with approx. 550 litre diesel. The costs for having 2 inspection hatches mounted on the the side of the starboard tank and to have it cleaned would be approx. € 2.000,-.



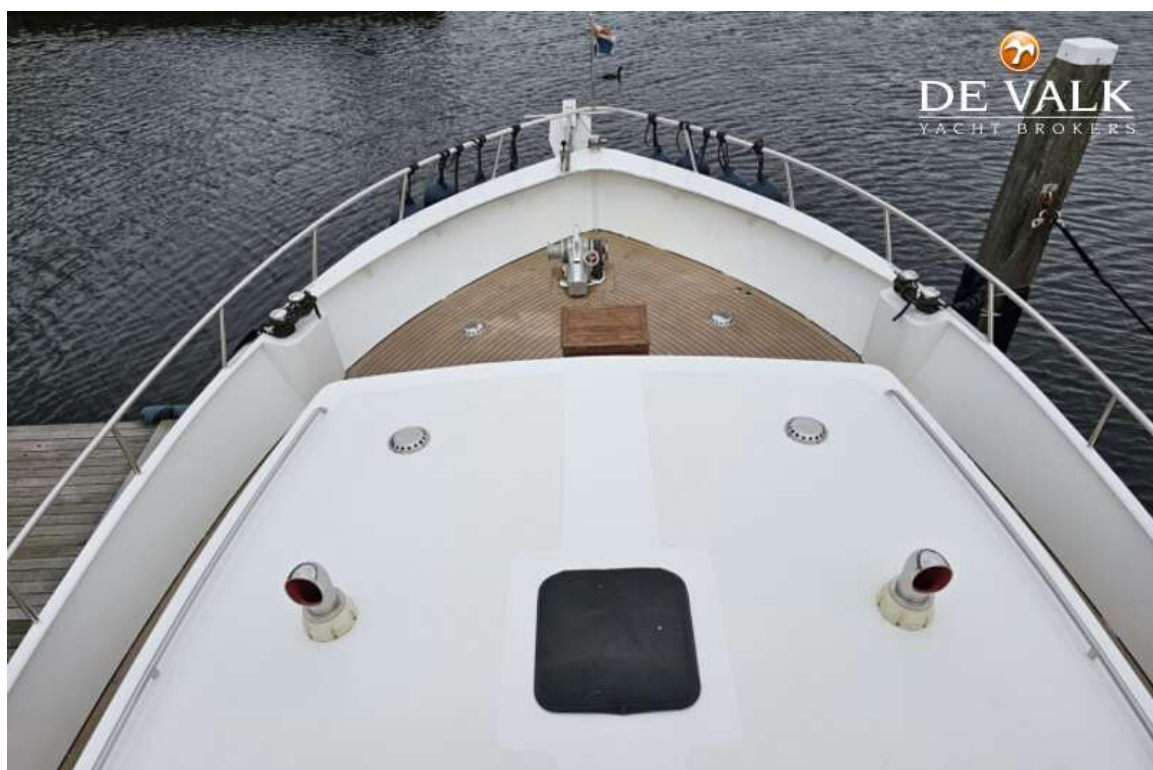


STEVENS COLUMBUS KOTTER 16.40





STEVENS COLUMBUS KOTTER 16.40





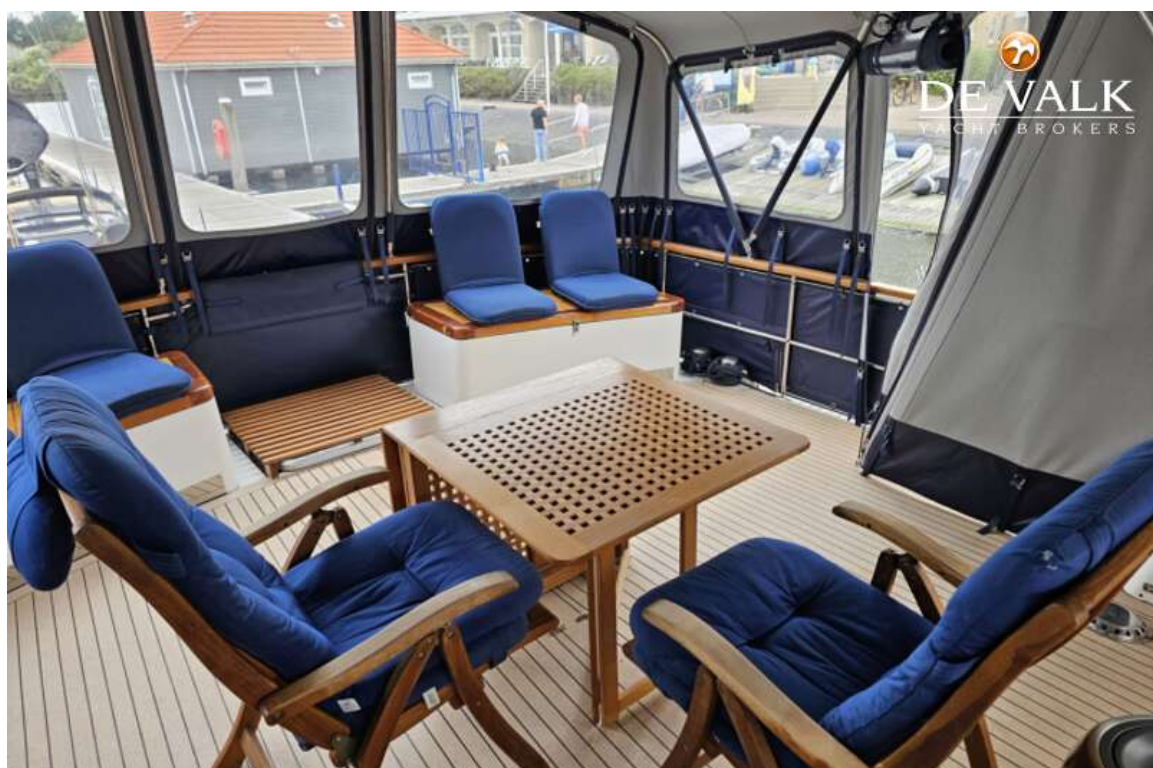
STEVENS COLUMBUS KOTTER 16.40



STEVENS COLUMBUS KOTTER 16.40



STEVENS COLUMBUS KOTTER 16.40



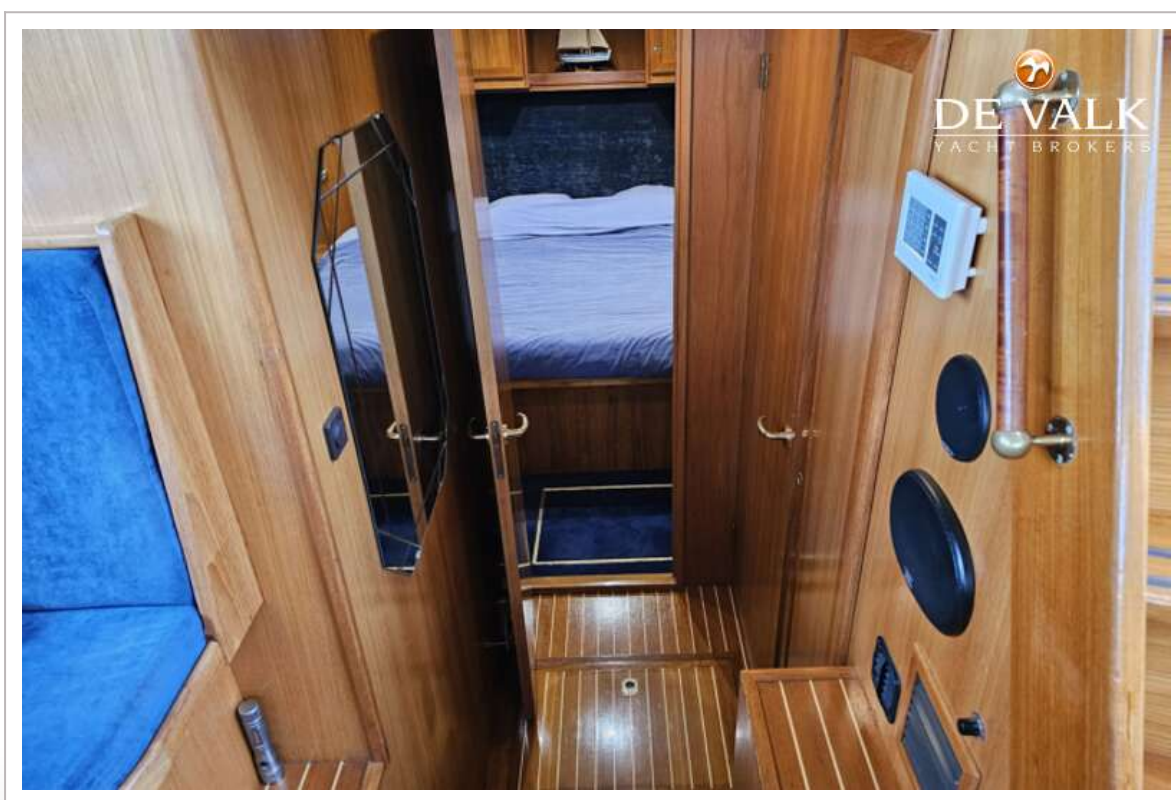
STEVENS COLUMBUS KOTTER 16.40



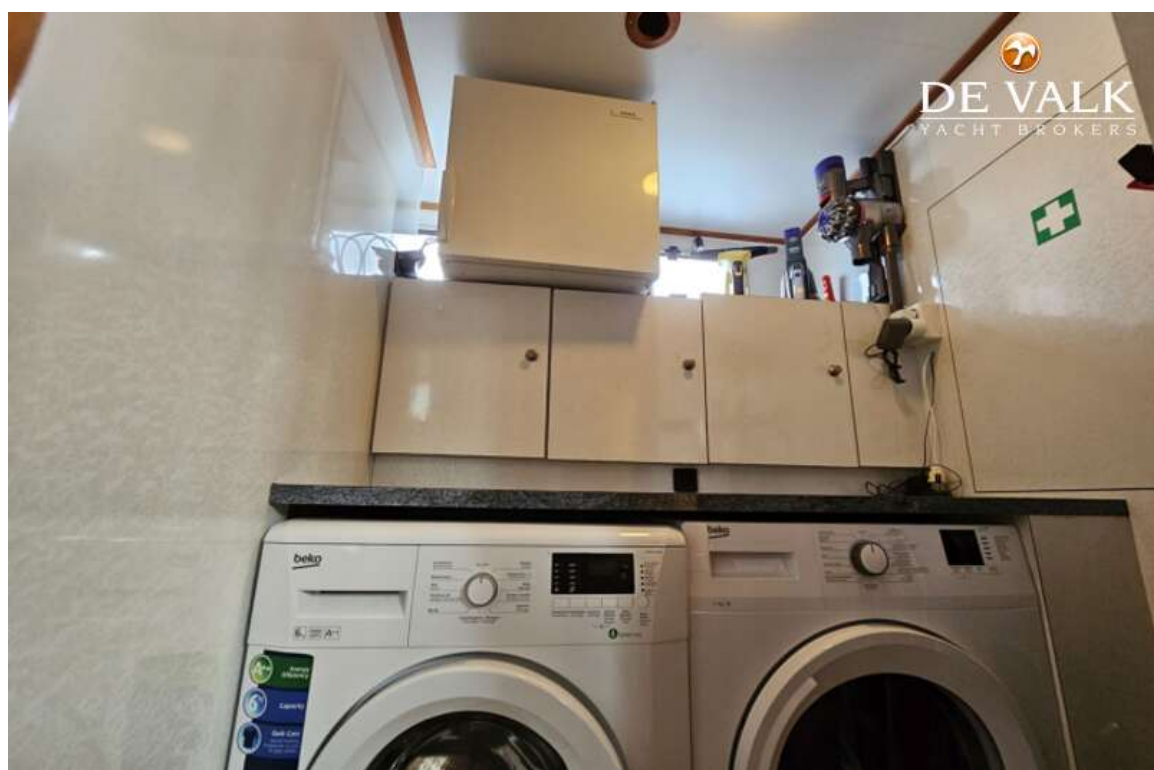
STEVENS COLUMBUS KOTTER 16.40



STEVENS COLUMBUS KOTTER 16.40







STEVENS COLUMBUS KOTTER 16.40



STEVENS COLUMBUS KOTTER 16.40



