



DE VALK
YACHT BROKERS



CHEOY LEE 36



DE VALK
YACHT BROKERS

BROKERAGE | CHARTER | BERTHS | FINANCE | INSURANCE | YACHT MANAGEMENT

BROKER'S COMMENTS

Sturdy trawler, built at one of the most biggest Ship Yards, the Cheoy Lee Shipyard in Hong Kong. Comfortable motoryacht. Recent survey report available.

Arjen Hoeksma

SPECIFICATIONS

Dimensions	11.00 x 4.00 x 1.20 (m)	Builder	Cheoy Lee Shipyard
Built	1974	Cabins	1
Material	GRP	Berths	6
Engine(s)	2 x Ford 2710 Diesel	Hp/Kw	2 x 120.00 (hp), 88.20 (kw)
Asking price	sold (VAT)	Lying	at sales office

CONTACT

Sales office	De Valk Loosdrecht B.V.	Telephone	+31 (0)35 582 90 30
Address	't Breukeleveense Meentje 6 1231LM Loosdrecht / Wijdmeren NL	E-mail	loosdrecht@devalk.nl

DISCLAIMER

These particulars are given in good faith as supplied but cannot be guaranteed.



GENERAL

Model	CHEOY LEE 36
Type	motor yacht Motor
LOA (m)	11,00
Beam (m)	4,00
Draft (m)	1,20
Air draft (m)	3,90
Year built	1974
Builder	Cheoy Lee Shipyard
Country	Hong Kong
Displacement (t)	16
Hull material	GRP
Hull colour	Blue
Hull shape	Deep-V
Superstructure material	GRP Painted in 2008, 2 comp. system
Deck finish	Teak
Superstructure deck finish	Teak
Cockpit deck finish	Teak
Window material	Toughened glass
Flybridge	yes
Flybridge cover	yes
Flybridge cockpit cover	yes
Mast can be lowered	Manual
Fuel tank (litre)	2.300
Level indicator (fuel tank)	yes
Freshwater tank (litre)	2 x 1.200
Blackwater tank (litre)	200 (not in function)
Wheel steering	Hydraulic
Flybridge helm position	Hydraulic Wagner, (2010)
More info on paintwork	Superstructures painted in 2008 with 2 comp. system



ACCOMMODATION

Cabins	1
Berths	6
Interior	Teak
Floor	Teak
Pilot house	2 side doors
Deck saloon	large settee
Headroom saloon (m)	2,00
Heating	Central hot water Eberspacher
Chart table	yes
Dinette	yes
Dinette to convert into berth	yes
Galley	yes
Countertop	yes
Sink	Stainless steel
Cooker	Calor gas Zanussi, 4x
Fridge	Electrolux
Hot water system	
Water pressure system	Electrical
Owners cabin	V-bed
Toilet	Electric
Toilet system	Manual
Wash basin	in the bathroom
Shower	en suite

MACHINERY

No of engines	2
Make	Ford
Type	2710
HP	120,00
kW	88,20



Fuel	diesel
Year installed	1974
Maximum speed (kn)	12
Cruising speed (kn)	9.00
Consumption (l/hr)	10.00
Engine hours	3400
Engine cooling system	Freshwater heatexchanger
Drive	shaft
Engine controls	Bowden cable
Gearbox	Hydraulic Velvet
Bowthruster	Electric Vetus
Propeller type	Fixed
Propeller shaft material	Stainless steel
Electric bilge pump	yes
Electrical installation	12/220 Volt
Generator	dry exhaust Honda 2,0L.
Start battery	2
Service battery	4 x 200 Amp.
Battery charger	Victron 12/2000/80 Service
Extra info	start + bowthruster Vetus batterycharger

NAVIGATION

Compass	Plastimo
Depth sounder	Robertson Dataline
Log	Robertson Dataline
VHF	Sailor RT 2048
Autopilot	Benmar
Extra info	Rudderindicator

EQUIPMENT

Fixed windscreen	yes
------------------	-----



Cockpit cover	Aftdeck
Bimini	yes
Bathing platform	yes
Boarding ladder	yes
Transom door	aft
Anchor	yes
Anchor chain	35 m.
Windlass	Electrical
Sea railing	Stainless steel
Horn	yes
Radio-cd player	Philips

RIGGING

Material mast	Aluminum
Mast lowering system	manual



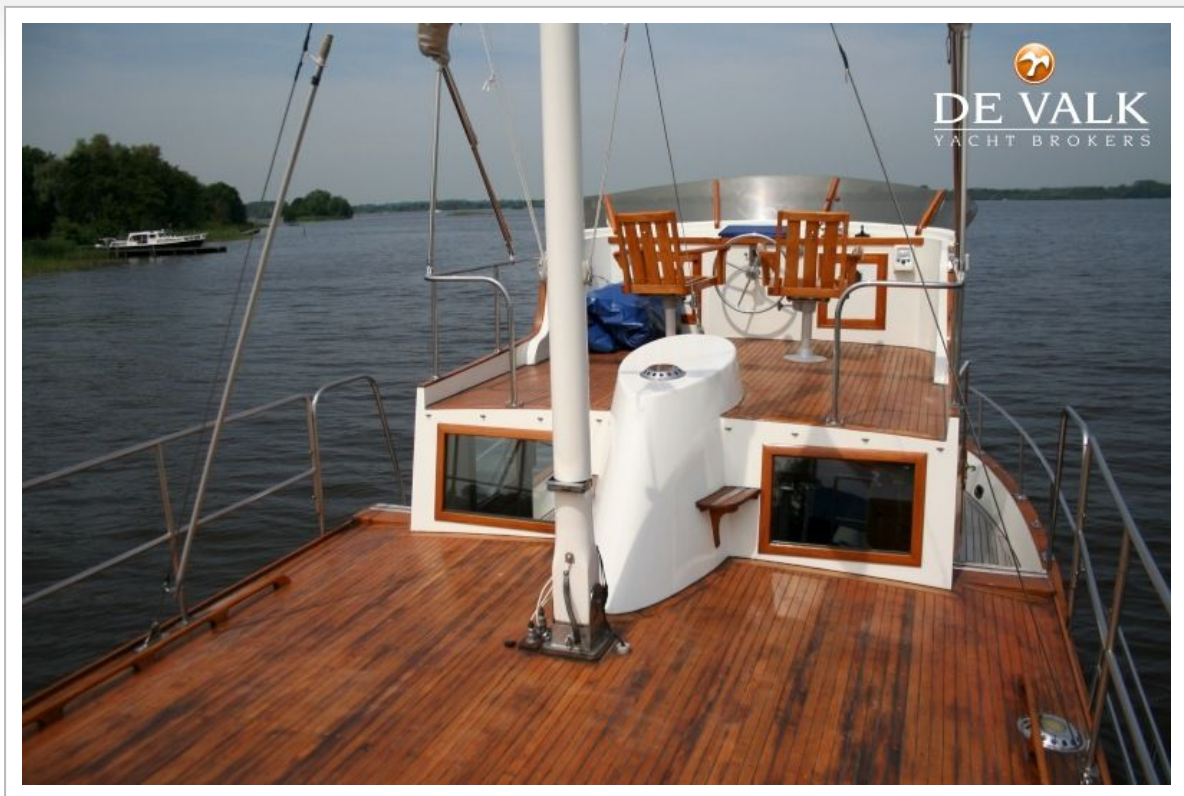




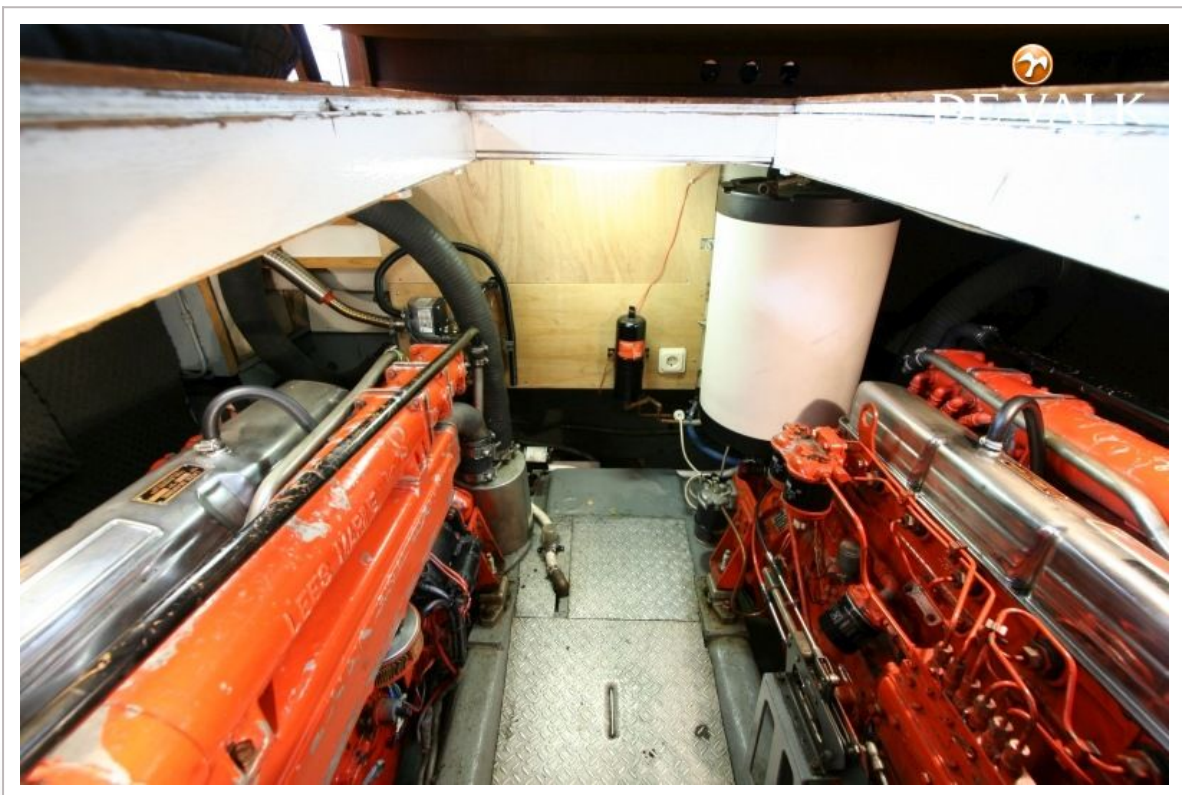




CHEOY LEE 36











CHEOY LEE 36





