



DE VALK
YACHT BROKERS



BERTRAM 58



DE VALK
YACHT BROKERS

BROKER'S COMMENTS

The perfect 'live a board', if you are looking for comfortable living space in the Barcelona area, the Bertram 58 must be seen. At the same time The Bertram 58 Aft cabin also is a very comfortable off-shore cruiser. Cruising the Mediterranean with your own yacht and in all comfort is now possible. The Bertram 58 offers with her volume the comfort of a serious apartment. The many upgrades on the Bertram made in the passed years makes this strong built motoryacht ready for the future.

Peter van Diggele

SPECIFICATIONS

Dimensions	17.80 x 5.45 x 1.52 (m)	Builder	Bertram Yachts Florida
Built	1978	Cabins	3
Material	GRP	Berths	6
Engine(s)	2 x Detroit GM 12V-71TI diesel	Hp/Kw	2 x 675.00 (hp), 496.13 (kw)
Asking price	sold (VAT)	Lying	elsewhere / Not at sales office

CONTACT

Sales office	De Valk Loosdrecht B.V.	Telephone	+31 (0)35 582 90 30
Address	't Breukeleveense Meentje 6 1231LM Loosdrecht / Wijdmeren NL	E-mail	loosdrecht@devalk.nl

DISCLAIMER

These particulars are given in good faith as supplied but cannot be guaranteed.



GENERAL

Model	BERTRAM 58
Type	motor yacht Motor yacht
LOA (m)	17,80
Beam (m)	5,45
Draft (m)	1,52
Year built	1978
Builder	Bertram Yachts Florida
Country	U.S.A.
Designer	Richard Bertram
Displacement (t)	34
Hull material	GRP
Hull colour	White
Hull shape	Deep-V
Superstructure material	GRP
Rubbing strake	Stainless steel
Deck finish	Teak-imitation
Window frame	Aluminium
Window material	Toughened glass
Flybridge	Wetbar with fresh water tap and sink
Flybridge cover	yes
Radar arch	Non collapsible
Fuel tank (litre)	5.000
Level indicator (fuel tank)	yes
Freshwater tank (litre)	1.000
Level indicator (freshwater)	yes
Wheel steering	Hydraulic
Flybridge helm position	Hydraulic
Extra info	Aft deck, 23 m2

ACCOMMODATION



Cabins	3
Berths	6
Interior	Teak Renewed in 2000
Floor	Teak
Pilot house	yes
Saloon	table, settee, 2 chairs and separate dining area
Headroom saloon (m)	2,05
Air-conditioning	5 units, serviced in 2007,
Aft Cabin	master stateroom with king-size bed and full side-to-side closet
Galley	yes
Sink	Stainless steel 2 x
Cooker	Keramic Miele, (2001)
Oven	Miele, (2001)
Extractor	Miele, (2001)
Microwave	Miele M611S, (2001)
Fridge	with freezer compartment Bailay
Water pressure system	Electrical
Dishwasher	Miele
Crockery	6 persons, (2001)
Owners cabin	French bed
Bathroom	en suite
Toilet	Electric
Toilet system	Electric
Wash basin	in the bathroom
Shower	en suite
Guest cabin 1	Bunk bed
Bathroom	en suite
Wash basin	yes
Guest cabin 2	Double bed
Bathroom	en suite
Toilet	Electric
Toilet system	Electric



Wash basin	in the bathroom
Shower	en suite
Washing machine	Bosch, (2009)
Dryer	Bosch, (2009)

MACHINERY

No of engines	2
Make	Detroit
Type	GM 12V-71TI
HP	675,00
kW	496,13
Fuel	diesel
Maximum speed (kn)	21
Cruising speed (kn)	17.00
Consumption (l/hr)	85.00
Engine hours	2500
Engine cooling system	Freshwater heatexchanger
Drive	shaft
Engine controls	Bowden cable
Gearbox	Hydraulic Twin Disc
Exhaust	Watercooled HMI (2000)
Propeller type	Fixed
Propeller blades	4
Propeller shaft material	Stainless steel
Electric bilge pump	3
Bilge alarm	yes
Electrical installation	12/24/32/110/220 Volt
Generator	Onan, 6.5 kw
Generator 2	Onan, 39 kw
Start battery	32 Volt
Service battery	32 Volt



Generator battery	2
Battery charger	3 x Sentry
Shorepower	2 x
Trimtabs	yes

NAVIGATION

Compass	Riviera B6W3
Depth sounder	Sonar
VHF	Skanti
Autopilot	Robertson
Radar	Furuno
Plotter	Simrad SE 40
Navtex	Furuno
Radio receiver	Sailor SSB
Loudhailer	Raytheon Ray 430

EQUIPMENT

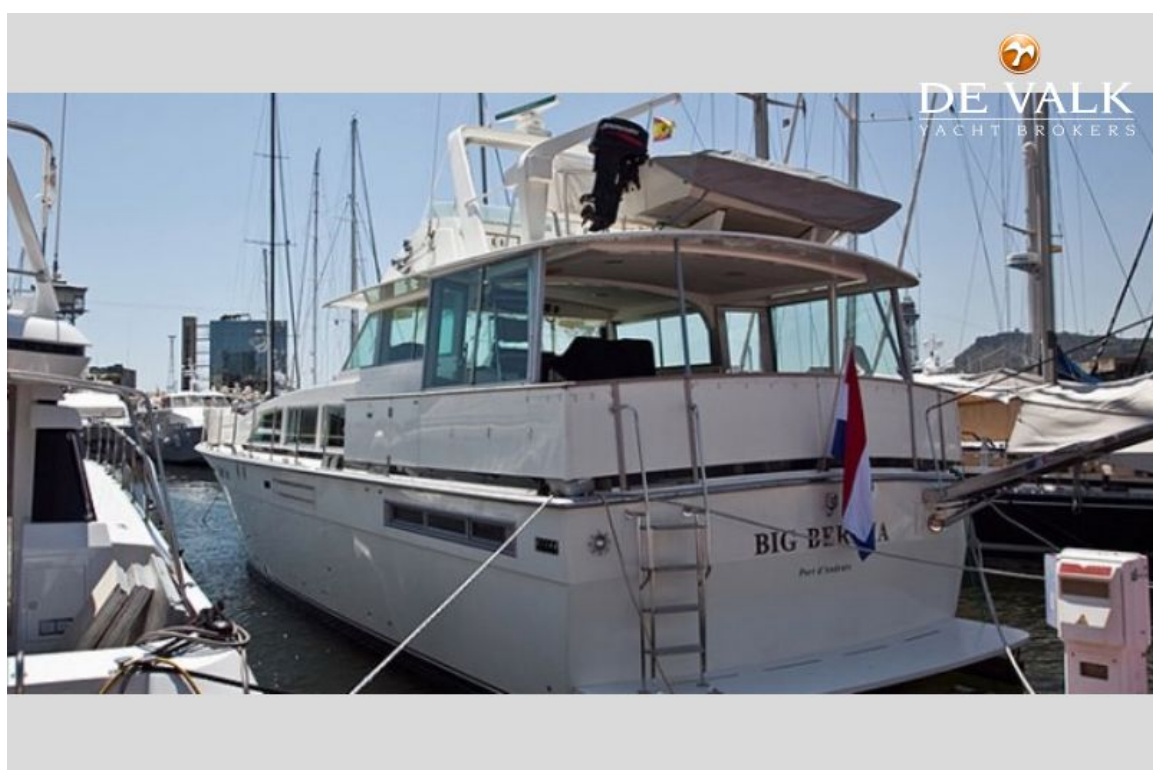
Bimini	yes
Sun awning	yes
Winter cover	yes
Cockpit cushions	yes
Bathing platform	yes
Boarding ladder	yes
Gangway	hydraulic Opacmare passerelle, (2001)
Deck shower	yes
Anchor	yes
Anchor chain	60 m. 10m/m (2008)
Windlass	Electrical Orvea 0530
Deck wash	yes
Deck crane	yes
Sea railing	yes



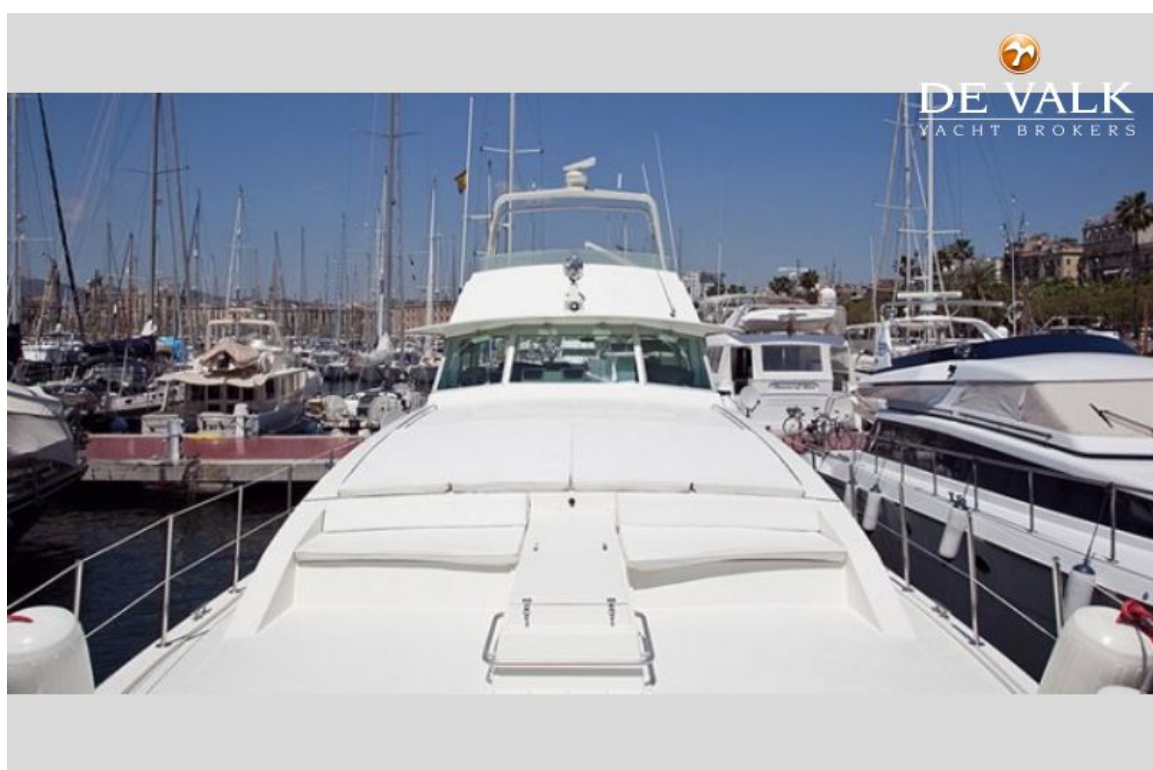
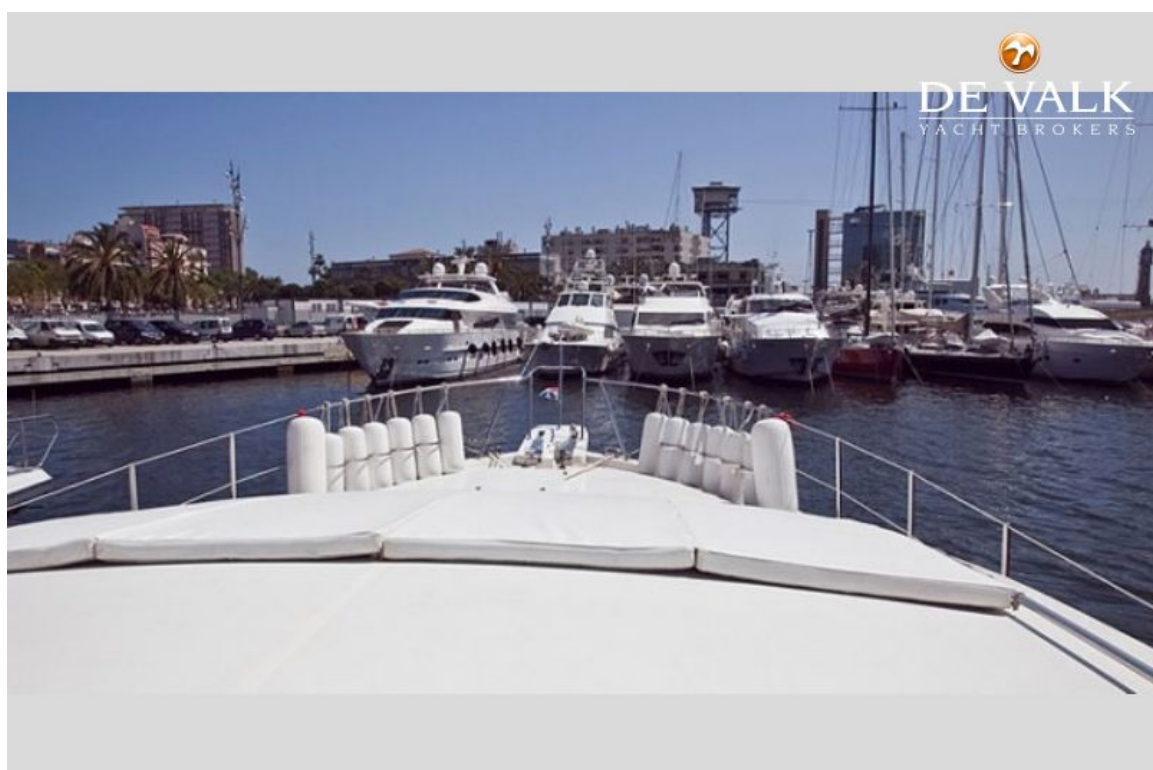
Life raft	Container 6 p, need to be serviced
Lifejackets	yes
Mooring lines	(2008)
Radio-cd player	Pioneer + Sony
Clock - barometer	yes



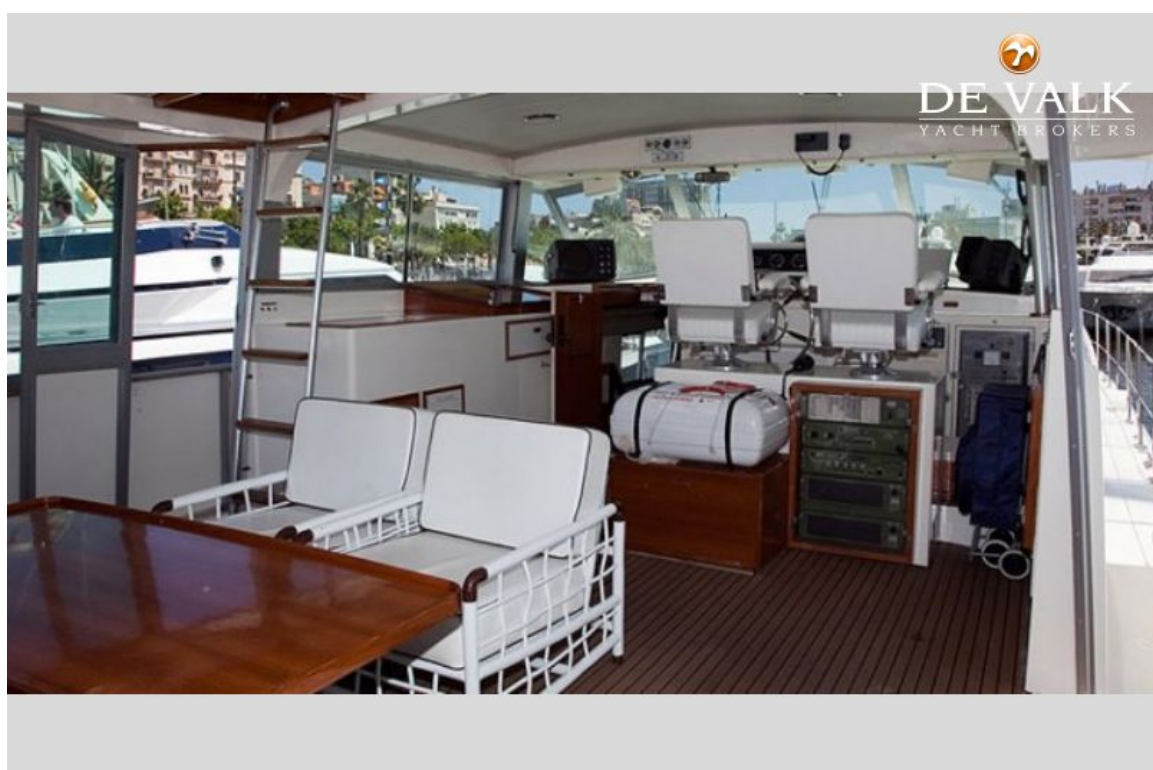
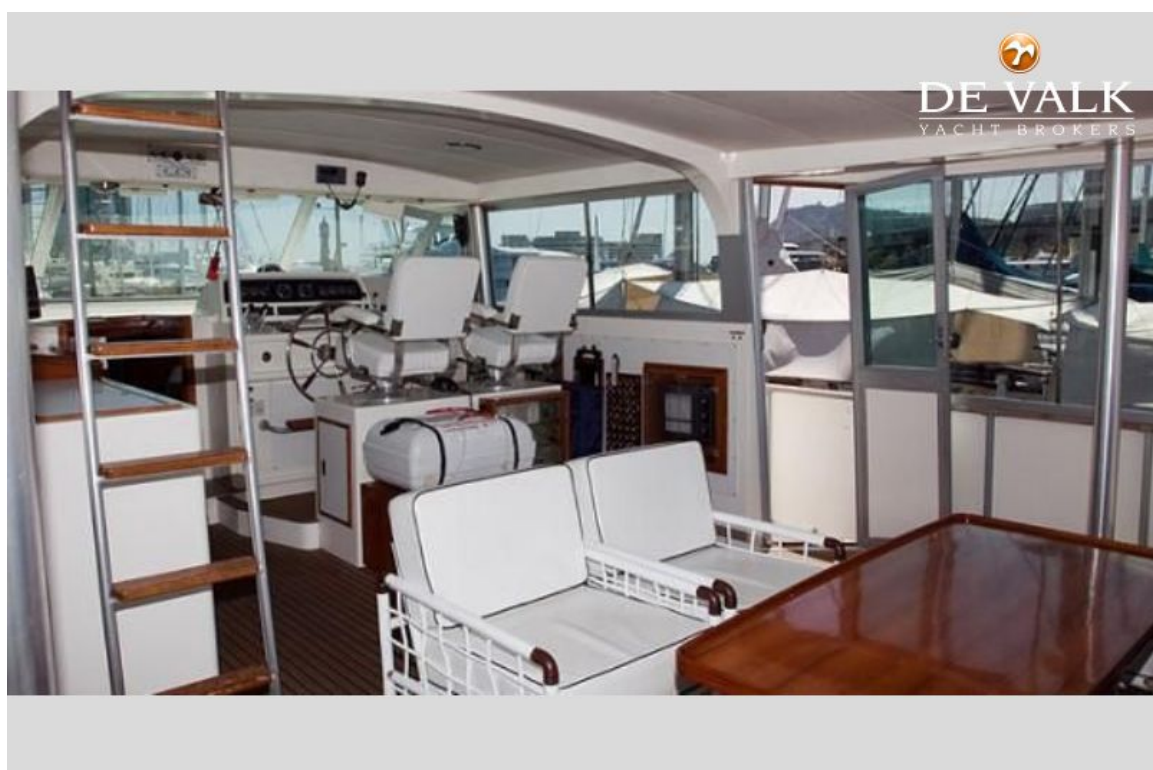
BERTRAM 58

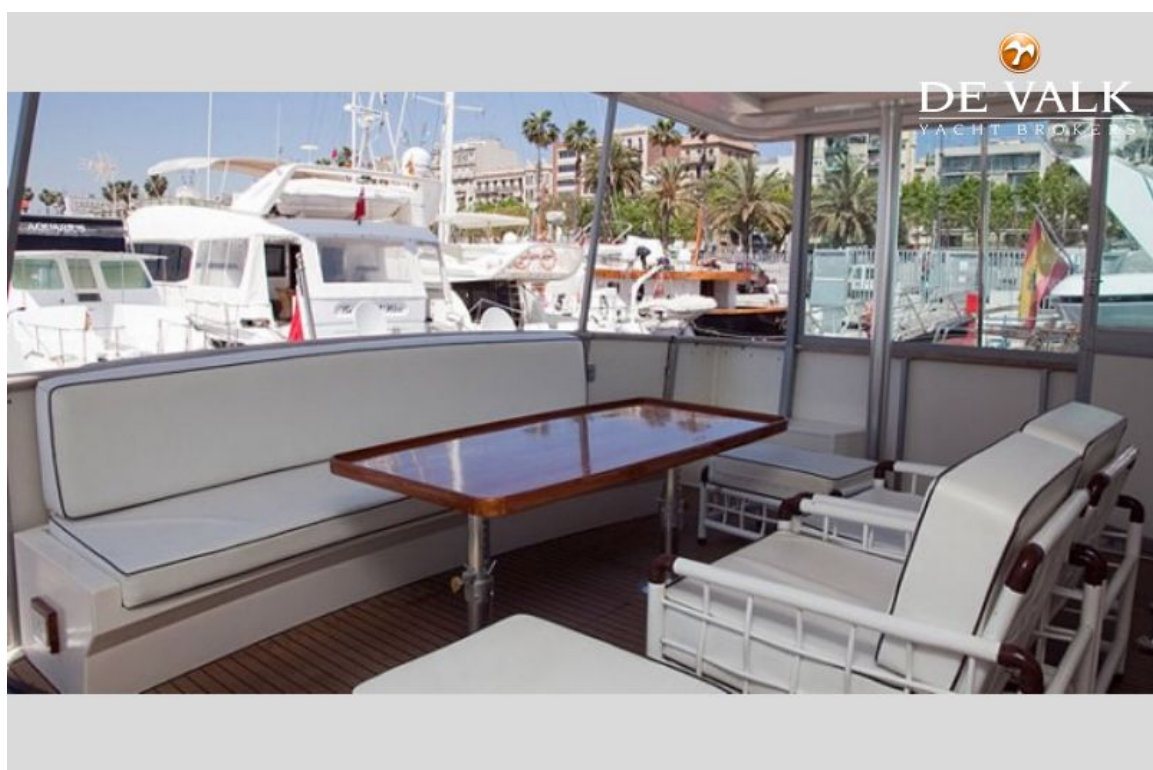






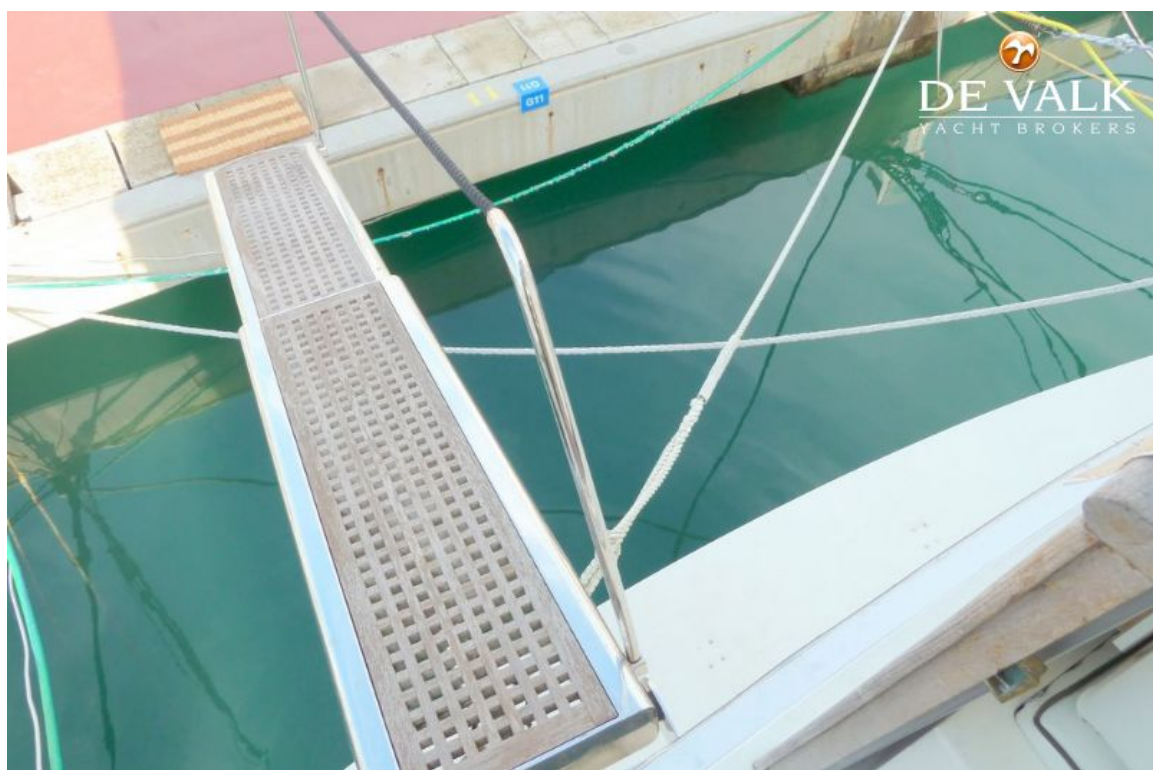
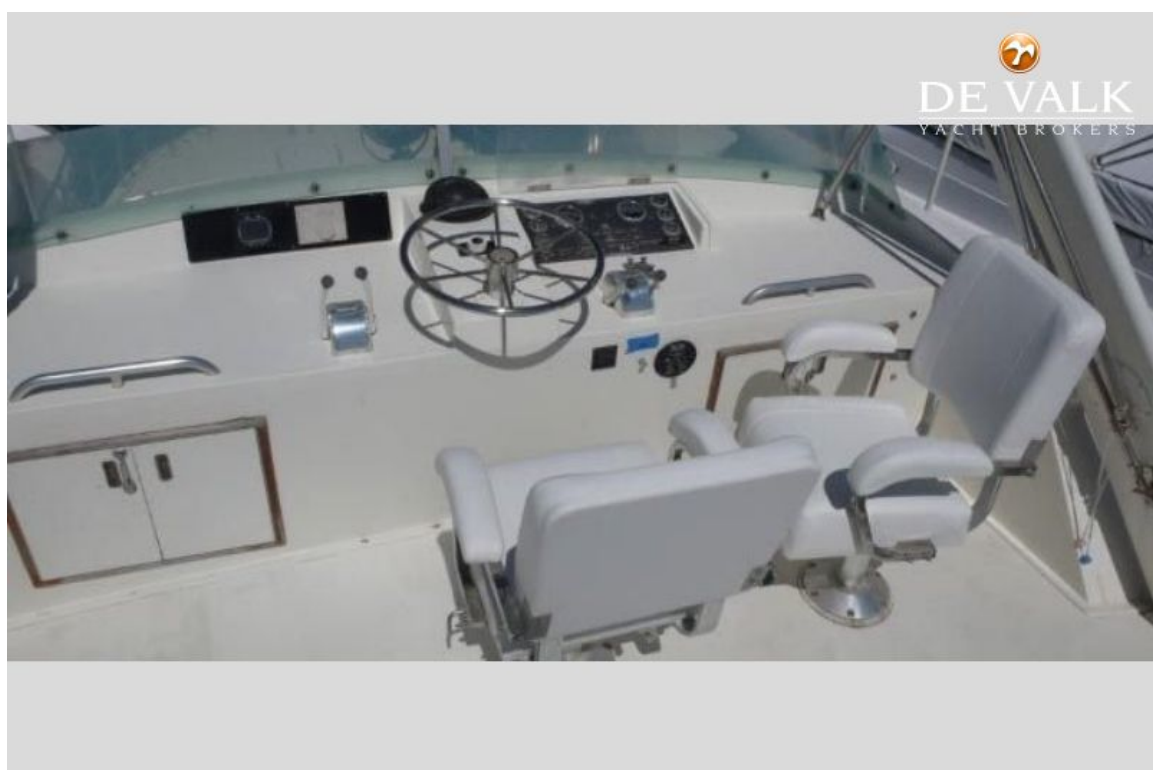
BERTRAM 58

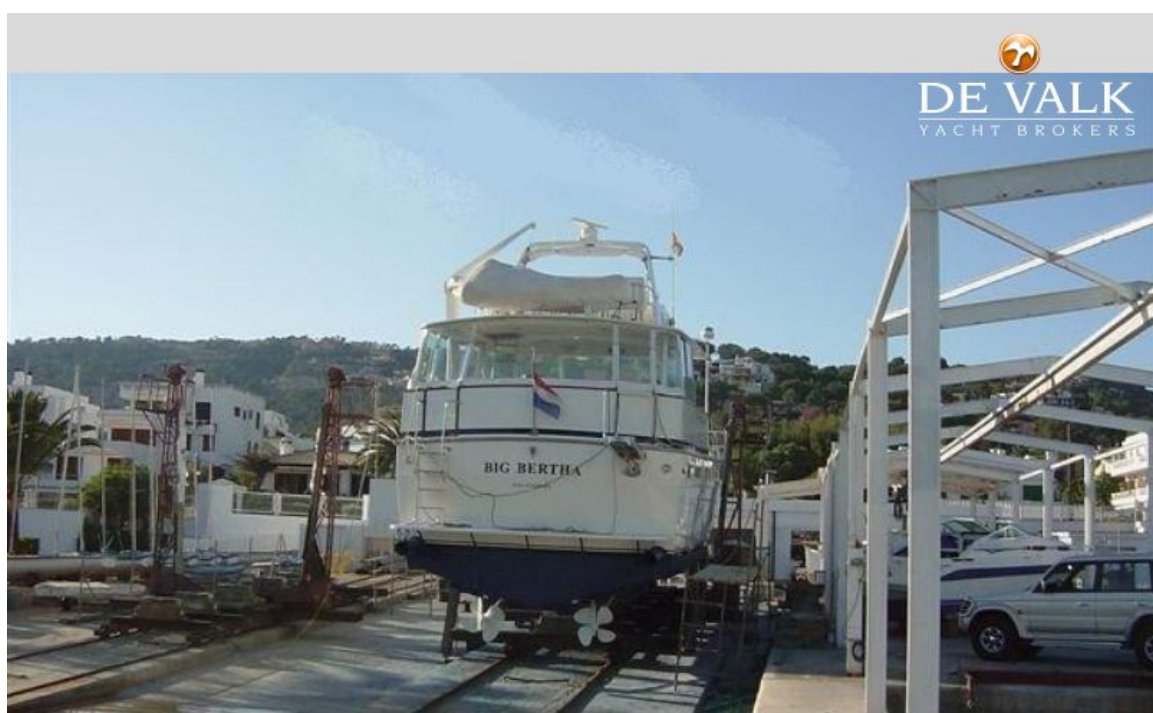


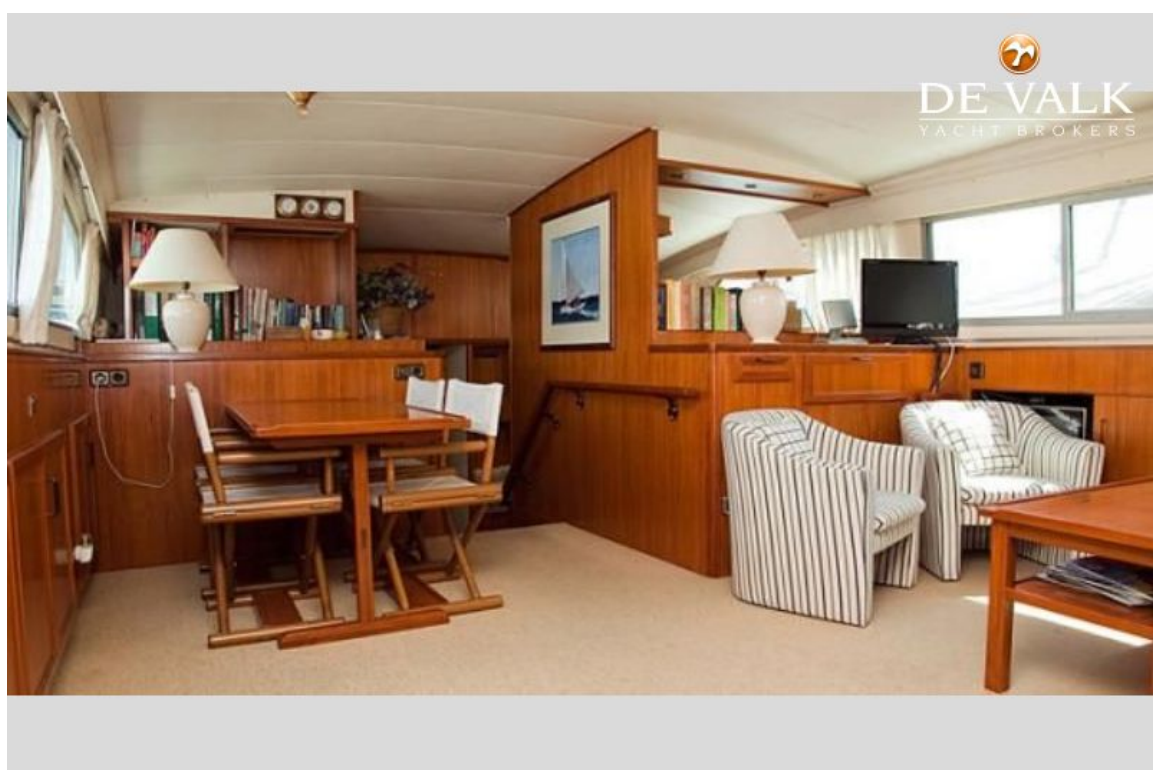




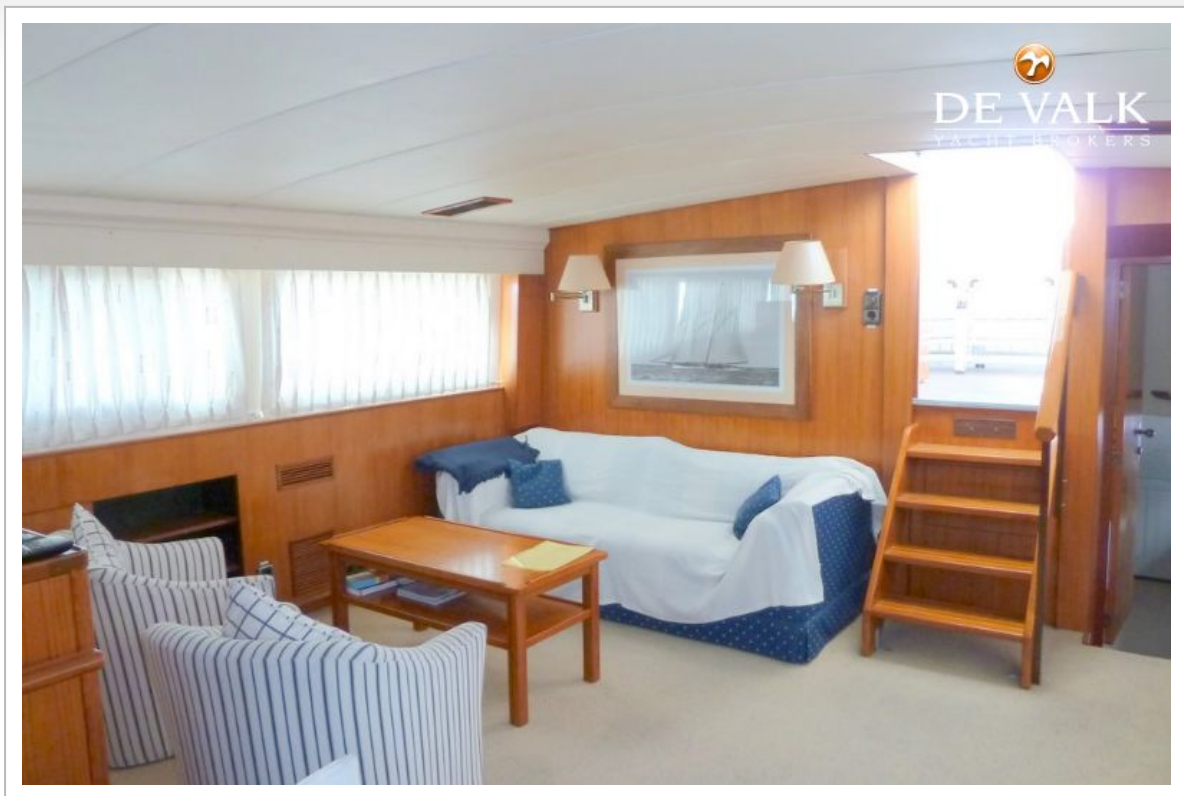
BERTRAM 58





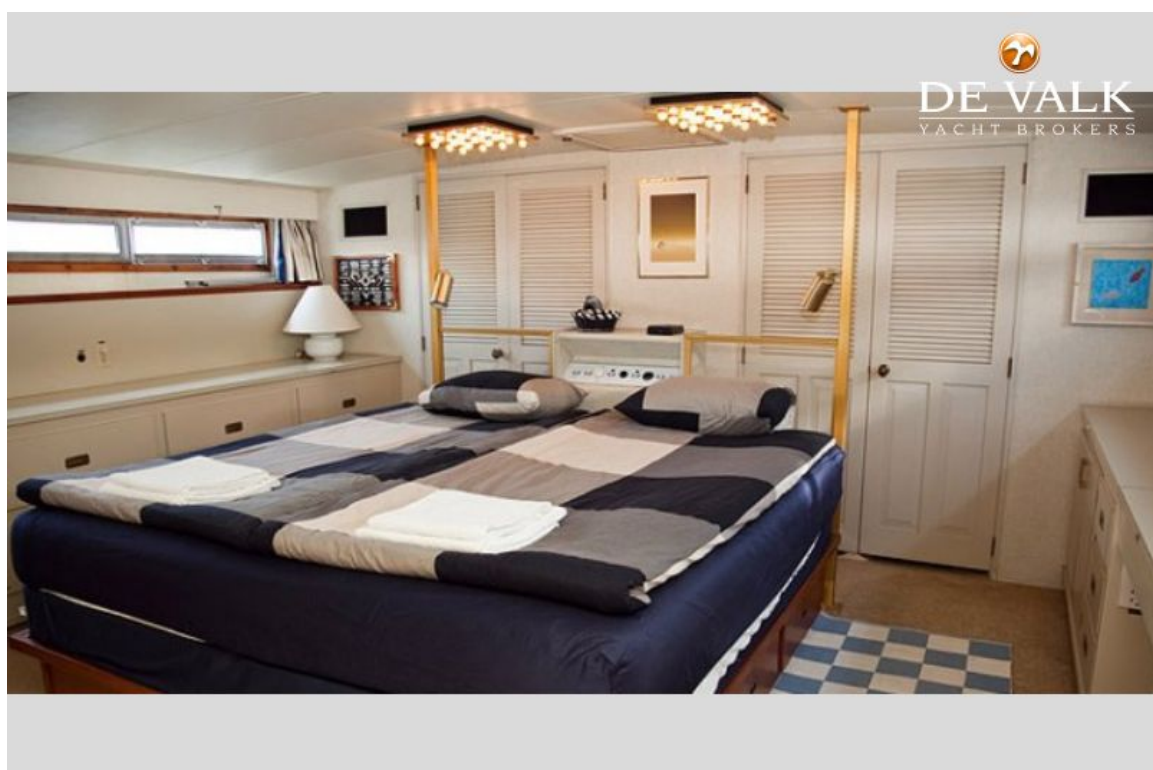


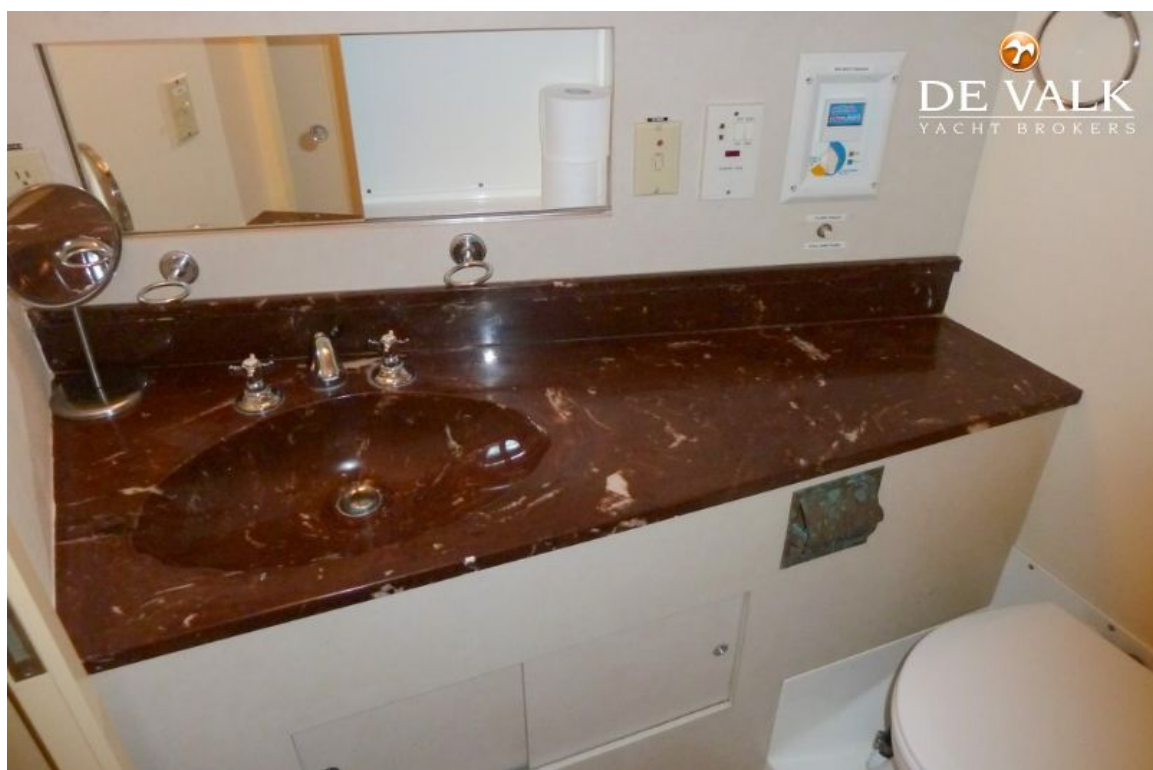
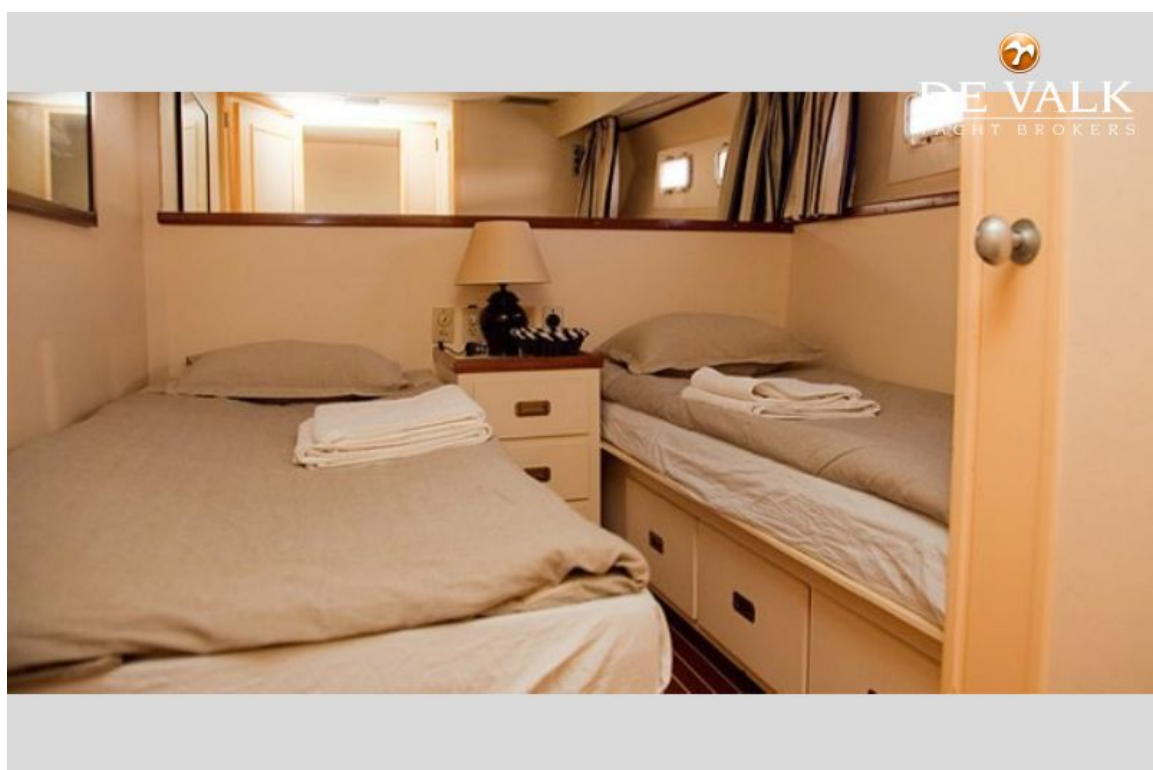






BERTRAM 58





BERTRAM 58

