



GRAND BANKS 36 HERITAGE CLAI



GRAND BANKS 36 HERITAGE CLAI

BROKER'S COMMENTS

Beautiful Grand Banks 36 Heritage Classic, built in 1990 by American Marine Singapore. With her good state of overall maintenance and cruising facilities is she a very nice boat to make cruises on the European waterways! Minimum airdraft 3,70 m.

Erwin van den Braak

SPECIFICATIONS

Dimensions	11.23 x 3.86 x 1.22 (m)	Builder	American Marine - Singapore
Built	1990	Cabins	2
Material	GRP	Berths	5
Engine(s)	2 x Ford Lehman diesel	Hp/Kw	2 x 135.00 (hp), 99.22 (kw)
Asking price	sold (VAT)	Lying	at sales office

CONTACT

Sales office	De Valk Loosdrecht B.V.	Telephone	+31 (0)35 582 90 30
Address	't Breukeleveense Meentje 6 1231LM Loosdrecht / Wijdmeren NL	E-mail	loosdrecht@devalk.nl

DISCLAIMER

These particulars are given in good faith as supplied but cannot be guaranteed.



GENERAL

Model	GRAND BANKS 36 HERITAGE CLAI
Type	motor yacht Motor yacht
LOA (m)	11,23
Beam (m)	3,86
Draft (m)	1,22
Air draft (m)	3,70
Year built	1990
Builder	American Marine - Singapore
Country	Singapore
Designer	American Marine
Displacement (t)	11,8
Hull material	GRP
Hull colour	White
Hull shape	Deep-V
Superstructure material	GRP
Rubbing strake	Stainless steel
Deck finish	Teak
Superstructure deck finish	Teak
Window frame	Wood
Window material	Toughened glass
Flybridge	yes
Mast can be lowered	Manual
Fuel tank (litre)	Stainless Steel 1514
Level indicator (fuel tank)	yes
Freshwater tank (litre)	582
Blackwater tank (litre)	40
Wheel steering	Mechanical 2 x
Flybridge helm position	Mechanical

ACCOMMODATION



Cabins	2
Berths	5
Interior	Teak
Layout	yes
Floor	Parquett
Pilot house/deck saloon	inside steering position, settee and galley
Saloon	2 side doors
Headroom saloon (m)	1,95
Heating	Diesel ducted hot air Eberspacher
Aft Cabin	Berths 2 + 1
Galley	yes
Countertop	yes
Sink	Stainless steel
Cooker	Calor gas Princess
Oven	Seaward
Fridge	with freezer compartment Engel, 89 L.
Hot water system	220v
Water pressure system	Electrical
Owners cabin	Double bed + single bed
Bathroom	en suite
Toilet	En suite
Toilet system	Manual
Wash basin	in the bathroom
Guest cabin 1	V-bed
Bathroom	En suite
Toilet	En suite
Toilet system	Manual
Wash basin	in the bathroom
Shower	En suite

MACHINERY



No of engines	2
Make	Ford
Type	Lehman
HP	135,00
kW	99,22
Fuel	diesel
Year installed	1990
Maximum speed (kn)	12
Cruising speed (kn)	9.00
Consumption (l/hr)	15.00
Engine hours	2822
Engine cooling system	Freshwater heatexchanger
Drive	shaft
Engine controls	Bowden cable
Gearbox	Hydraulic Velvet
Exhaust	Watercooled
Propeller type	Fixed
Propeller shaft material	Stainless steel
Shaft lubrication	Water
Electric bilge pump	yes
Electrical installation	12/220 Volt
Start battery	2
Service battery	2
Battery charger	Victron Centauer 12V/30Amp.
Inverter	Mastervolt AC Master 12/500
Shorepower	yes

NAVIGATION

Compass	Danforth, 2 x
Depth sounder	Simrad CE 33 BJG
Log	B&G



VHF	Simrad RS 87
Autopilot	Robertson AP 2500
Radar	Furuno 1725
GPS	Simrad CE 33
Plotter	Simrad CE 33

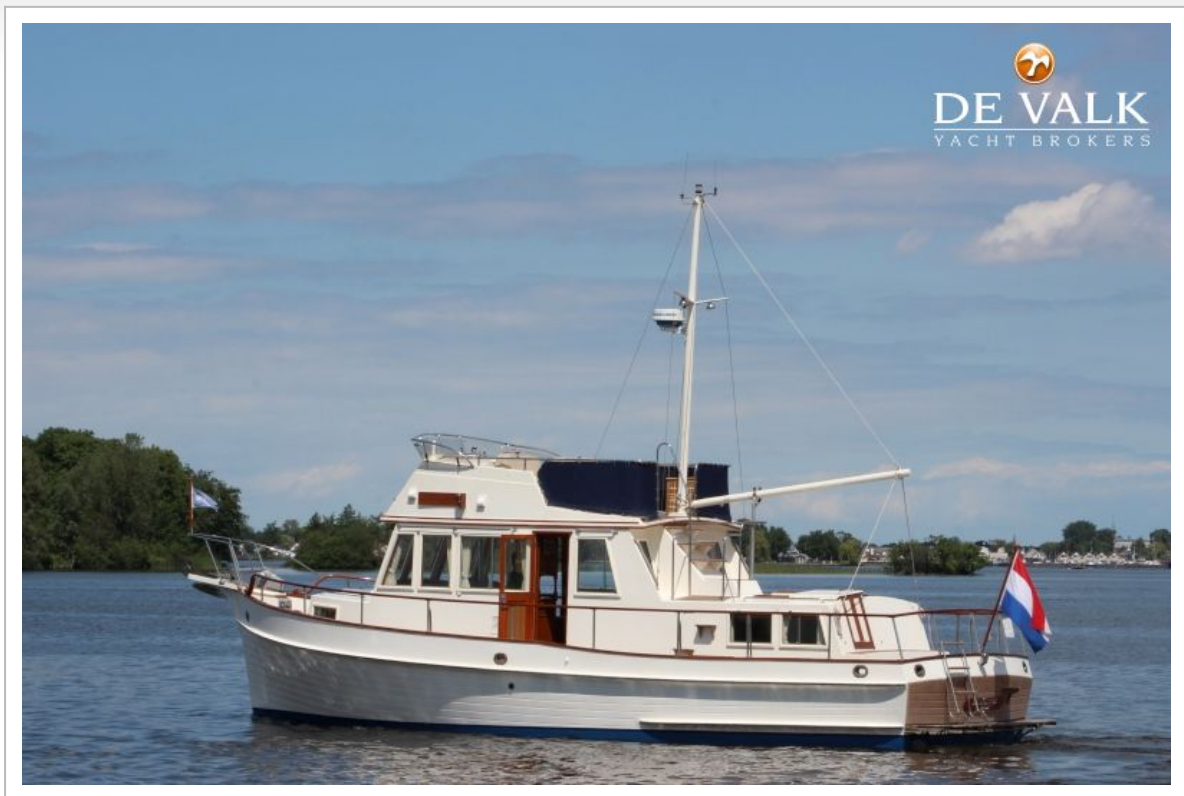
EQUIPMENT

Fixed windscreen	yes
Bimini	yes
Bathing platform	Teak
Boarding ladder	yes
Anchor	yes
Anchor chain	yes
Windlass	Lofrans
Sea railing	Teak
Grab rail (superstructure)	Stainless steel
Railing side opening gates	yes
Pulpit	yes
Wiper	yes
Horn	yes



GRAND BANKS 36 HERITAGE CLAI





GRAND BANKS 36 HERITAGE CLAI



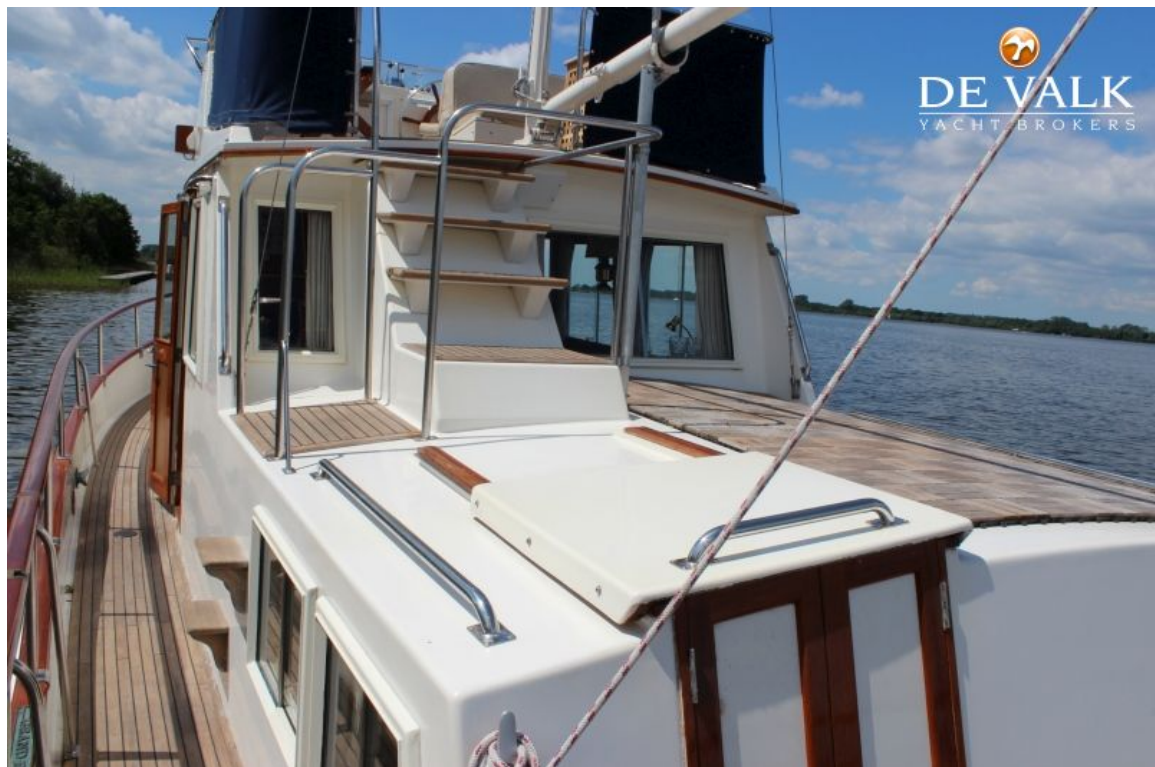
GRAND BANKS 36 HERITAGE CLAI



GRAND BANKS 36 HERITAGE CLAI



GRAND BANKS 36 HERITAGE CLAI



GRAND BANKS 36 HERITAGE CLAI



GRAND BANKS 36 HERITAGE CLAI



GRAND BANKS 36 HERITAGE CLAI



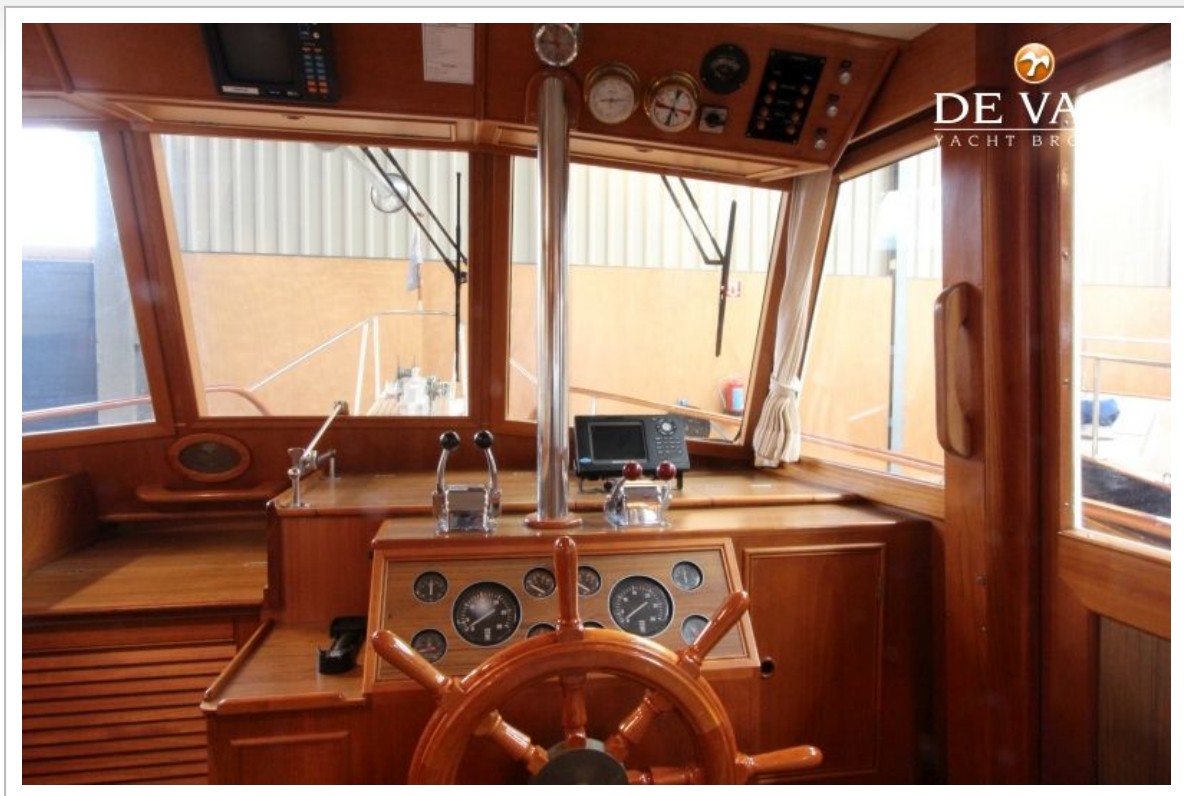
GRAND BANKS 36 HERITAGE CLAI



GRAND BANKS 36 HERITAGE CLAI



GRAND BANKS 36 HERITAGE CLAI



GRAND BANKS 36 HERITAGE CLAI



GRAND BANKS 36 HERITAGE CLAI



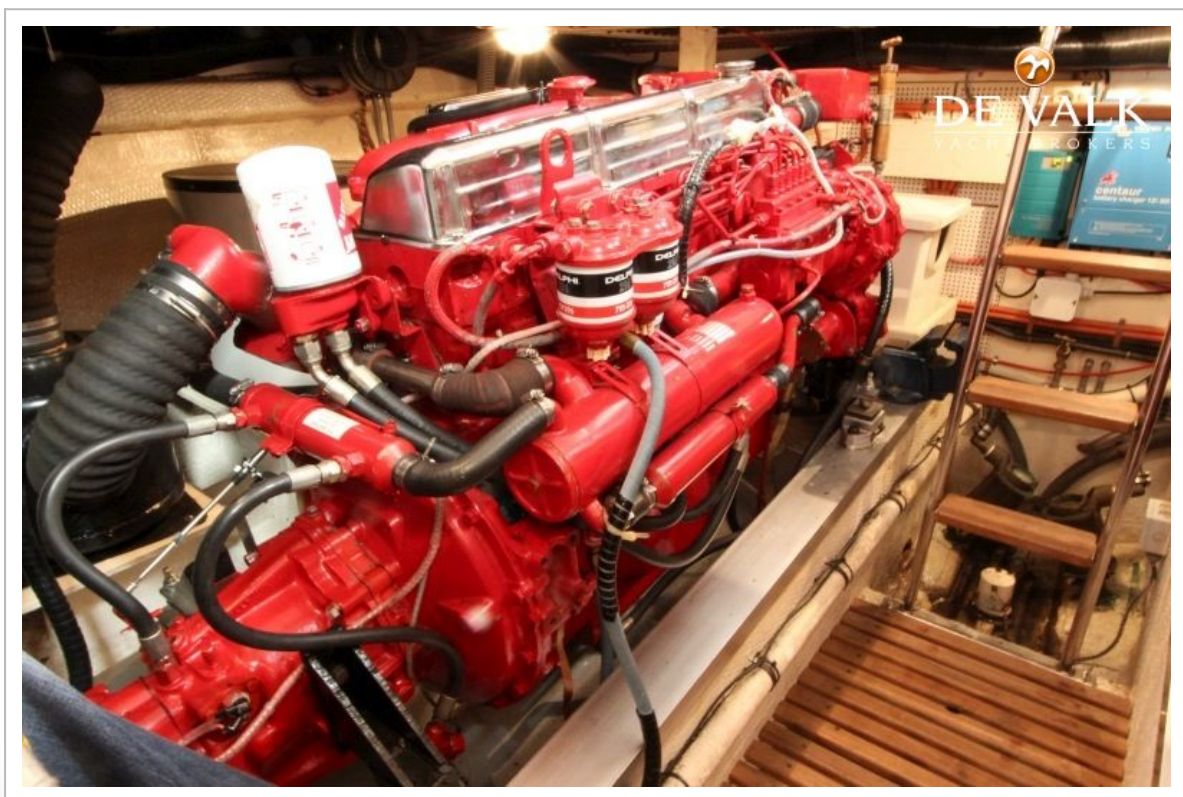
GRAND BANKS 36 HERITAGE CLAI



GRAND BANKS 36 HERITAGE CLAI



GRAND BANKS 36 HERITAGE CLAI



GRAND BANKS 36 HERITAGE CLAI

