



FJORD 40 CRUISER



DE VALK
YACHT BROKERS

FJORD 40 CRUISER

BROKER'S COMMENTS

Fjord 40 Cruiser. A unique craft with excellent maneuvering capabilities due to her IPS system with Joystick steering. The Fjord 40 Cruiser combines modern design with state-of-the art technology. This vessel is in an outstanding state of maintenance and has only 115 engine hours. Ready to go!

Arjen Hoeksma

SPECIFICATIONS

Dimensions	11.99 x 3.99 x 0.90 (m)	Builder	Hanse yachts
Built	2011	Cabins	2
Material	GRP	Berths	4
Engine(s)	2 x VOLVO PENTA IPS 500 diesel	Hp/Kw	2 x 370.00 (hp), 271.95 (kw)
Asking price	sold (VAT)	Lying	at sales office

CONTACT

Sales office	De Valk Loosdrecht B.V.	Telephone	+31 (0)35 582 90 30
Address	't Breukeleveense Meentje 6 1231LM Loosdrecht / Wijdmeren NL	E-mail	loosdrecht@devalk.nl

DISCLAIMER

These particulars are given in good faith as supplied but cannot be guaranteed.



FJORD 40 CRUISER

GENERAL

Model	FJORD 40 CRUISER
Type	motor yacht Motor yacht
LOA (m)	11,99
Beam (m)	3,99
Draft (m)	0,90
Air draft (m)	3,40
Headroom (m)	2,00
Year built	2011
Builder	Hanse yachts
Country	Germany
Designer	Allseas Design
Displacement (t)	10
CE norm	B
Hull material	GRP
Hull colour	Grey
Hull shape	Deep-V
Superstructure material	GRP
Rubbing strake	Stainless steel
Deck finish	Teak
Window frame	Aluminum
Window material	Toughened glass
Portholes	Lewmar
Insulation	Engine room
Fuel tank (litre)	1000
Level indicator (fuel tank)	yes
Freshwater tank (litre)	340
Level indicator (freshwater)	yes
Blackwater tank (litre)	yes
Level indicator (blackwater)	yes
Wheel steering	Electric Volvo Penta Drive by Wire



FJORD 40 CRUISER

ACCOMMODATION

Cabins	2
Berths	4
Interior	Mahogany Exotic
Floor	Teak
Headroom saloon (m)	2
Heating	Diesel ducted hot air Webasto
Dinette	Collapsible
Dinette to convert into berth	yes
Galley	Spacious in saloon
Countertop	Corian
Sink	Corian
Cooker	Keramic Dometic Origo 3-burner
Microwave	LG
Fridge	with freezer compartment Isotherm
Hot water system	220v + engine Boiler
Water pressure system	Electrical
Owners cabin	French bed
Bathroom	en suite
Toilet	En suite
Toilet system	Electric Jabsco
Wash basin	in the bathroom
Shower	En suite
Guest cabin 1	Single bed

MACHINERY

No of engines	2
Make	VOLVO PENTA
Type	IPS 500
HP	370,00
kW	271,95



FJORD 40 CRUISER

Fuel	diesel
Year installed	2011
Maximum speed (kn)	35
Engine hours	115
Engine cooling system	Freshwater heatexchanger
Engine controls	Electrical Volvo Penta
Exhaust	Watercooled
Propeller type	Volvo Penta IPS
Propeller blades	Volvo Penta IPS
Manual bilge pump	yes
Electric bilge pump	yes
Electrical installation	12V/230V
Generator	Fischer Panda 6kW
Start battery	2x 95 Ah Varta
Service battery	3x 150 Ah AGM Victron Energy
Battery charger/inverter	Victron Energy Multiplus 12V/3000W/120A inverter/battery charger
Shorepower	yes
Trimtabs	yes

NAVIGATION

Depth sounder	yes
Log	yes
VHF	Raymarine VHF 240 E
Autopilot	Raymarine ST 8002
Rudder angle indicator	Volvo Penta
Radar	Raymarine Radar 2 kW, painted in black
Radar/GPS/plotter	Raymarine E 120W touchscreen chartplotter with GPS/Radar

EQUIPMENT

Sun awning	yes
------------	-----



FJORD 40 CRUISER

Cockpit cushions	yes
Cockpit table	yes
Cockpit chairs	yes
Bathing platform	yes
Boarding ladder	yes
Deck shower	Hot/Cold
Anchor	Hydraulisch folding out
Anchor chain	yes
Windlass	Electrical
Sea railing	Stainless steel
Grab rail (superstructure)	Stainless steel
Wiper	2x double
Window ventilator	yes
Horn	Electric
Radio-cd player	Clarion
Cockpit speakers	yes
Fire extinguisher	yes
Extinguisher in engine room	yes
Auto extinguisher system	yes



FJORD 40 CRUISER



FJORD 40 CRUISER



FJORD 40 CRUISER



FJORD 40 CRUISER



FJORD 40 CRUISER



FJORD 40 CRUISER



FJORD 40 CRUISER



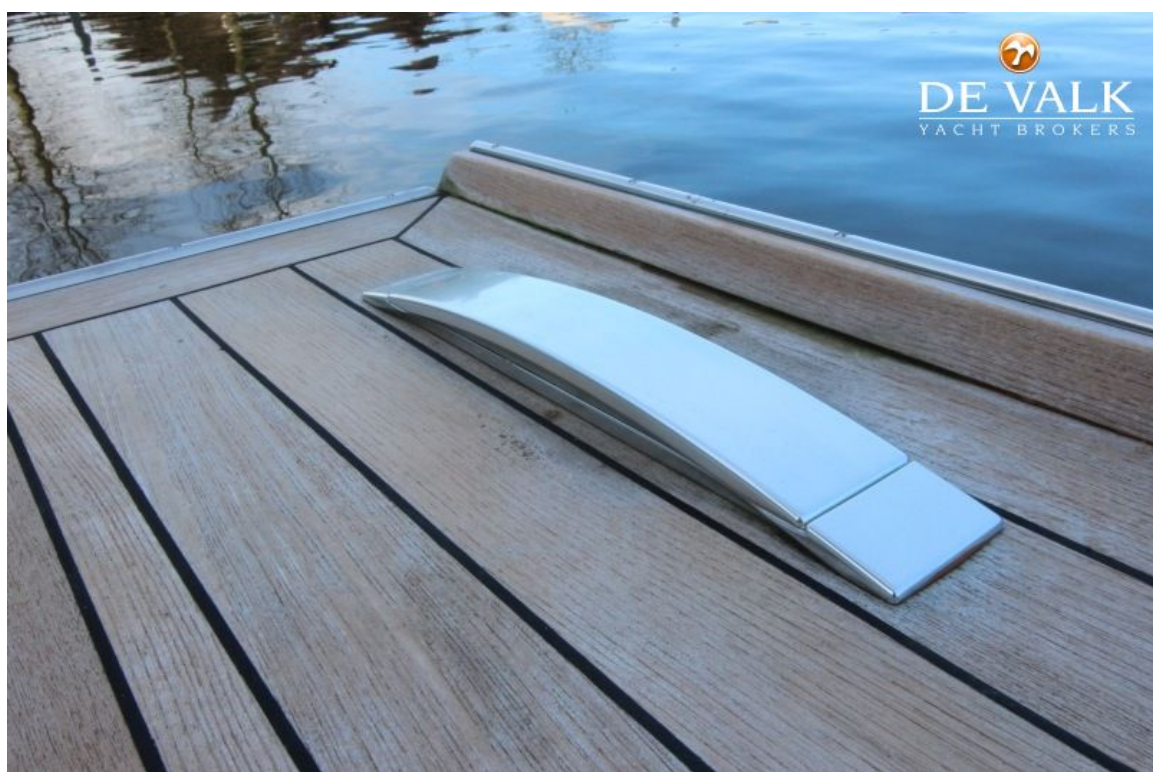
FJORD 40 CRUISER



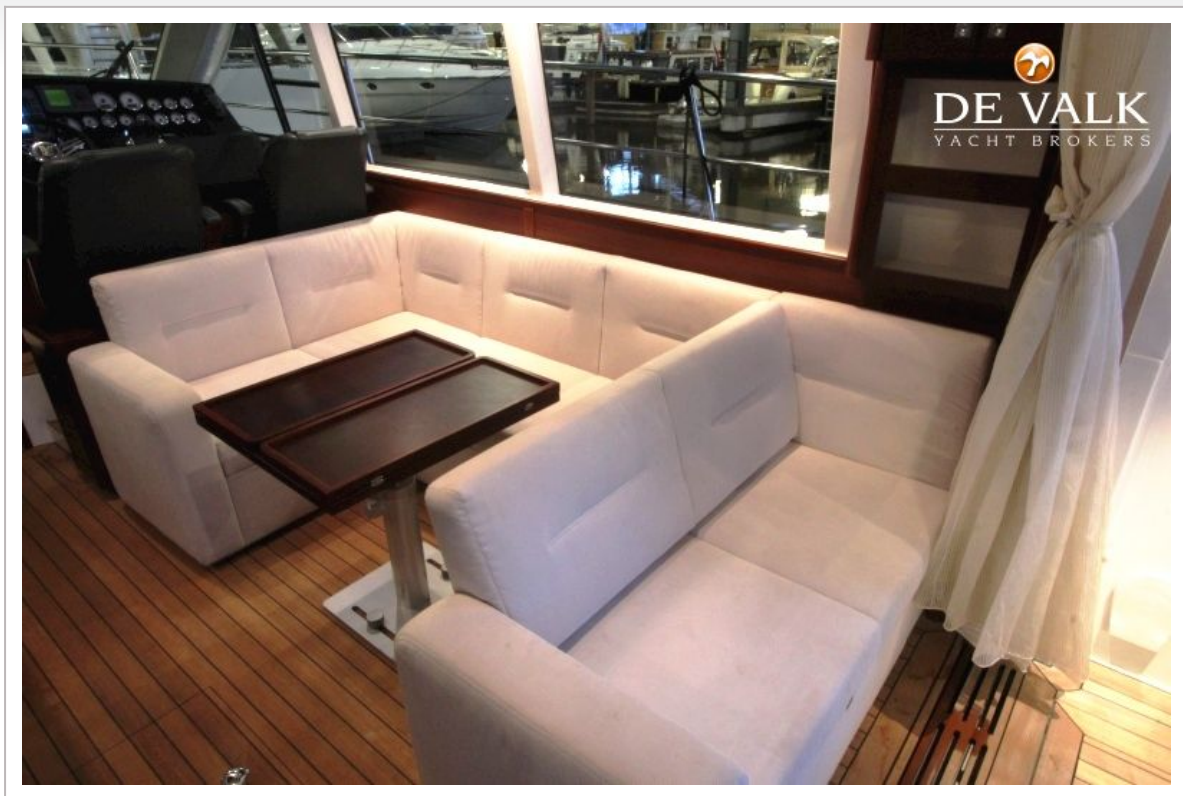
FJORD 40 CRUISER



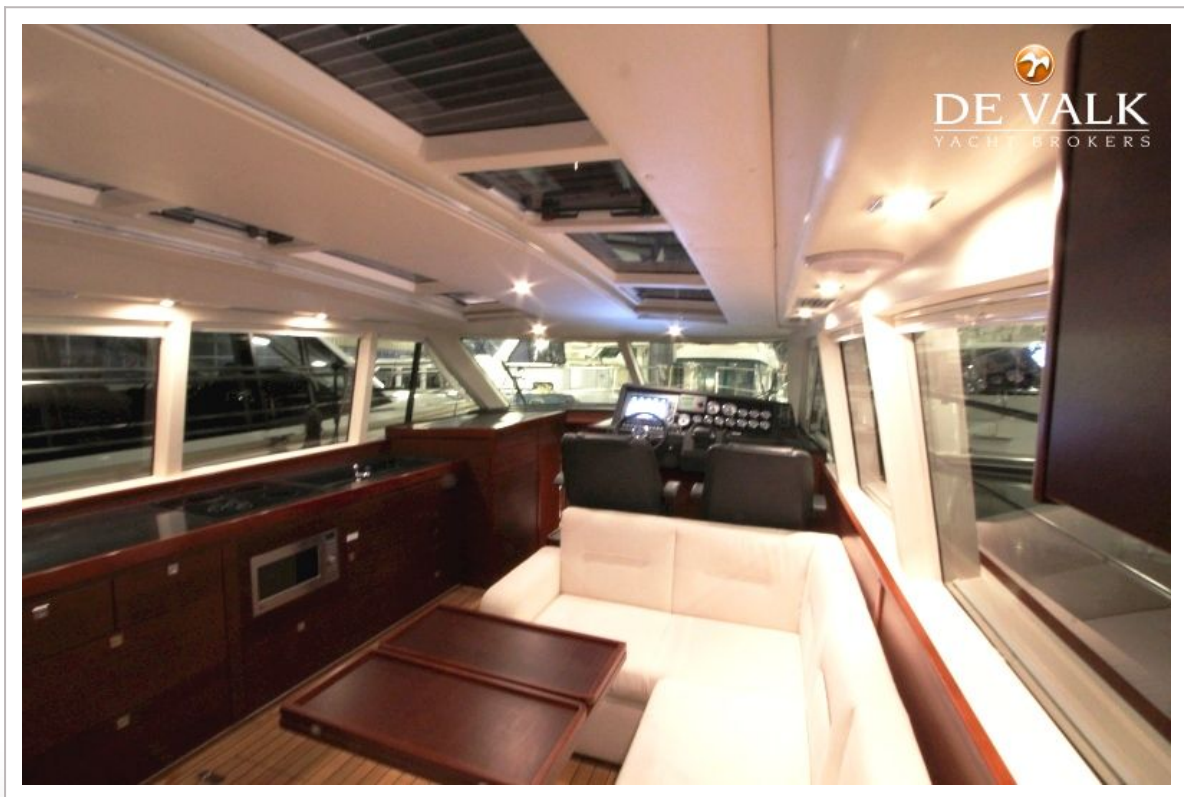
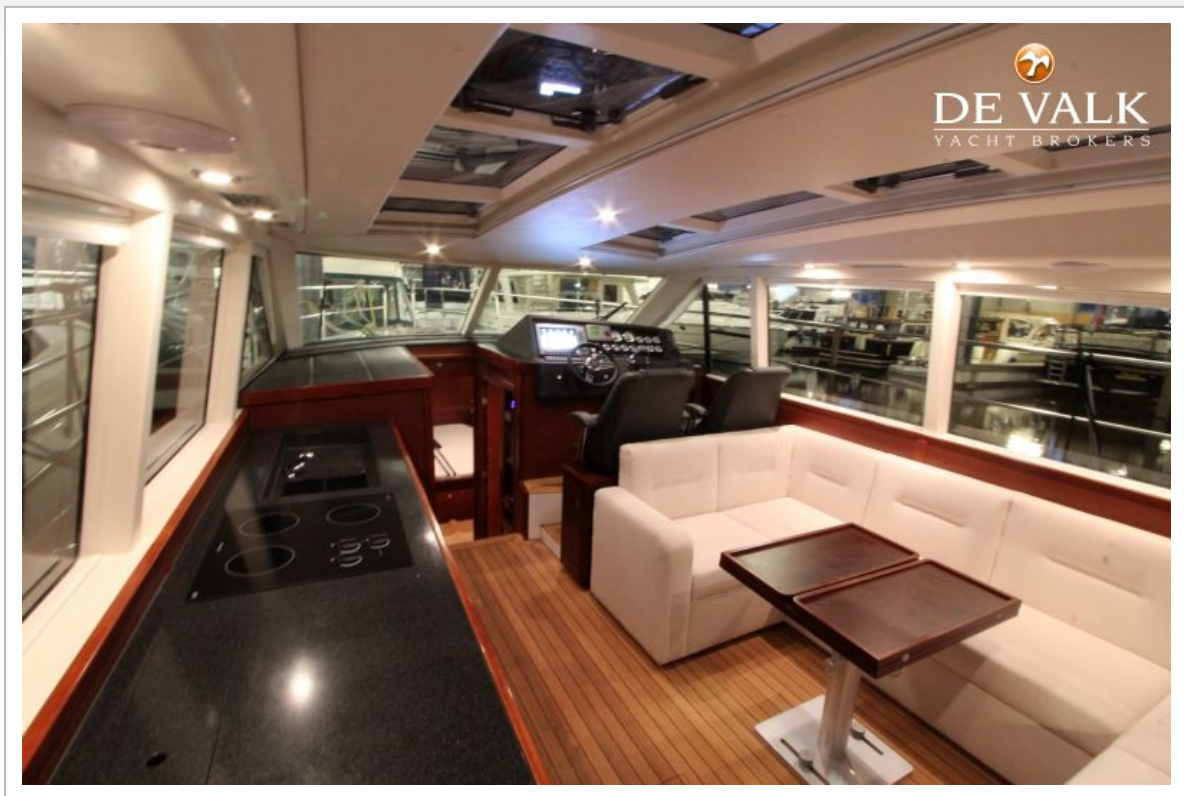
FJORD 40 CRUISER



FJORD 40 CRUISER



FJORD 40 CRUISER



FJORD 40 CRUISER



FJORD 40 CRUISER



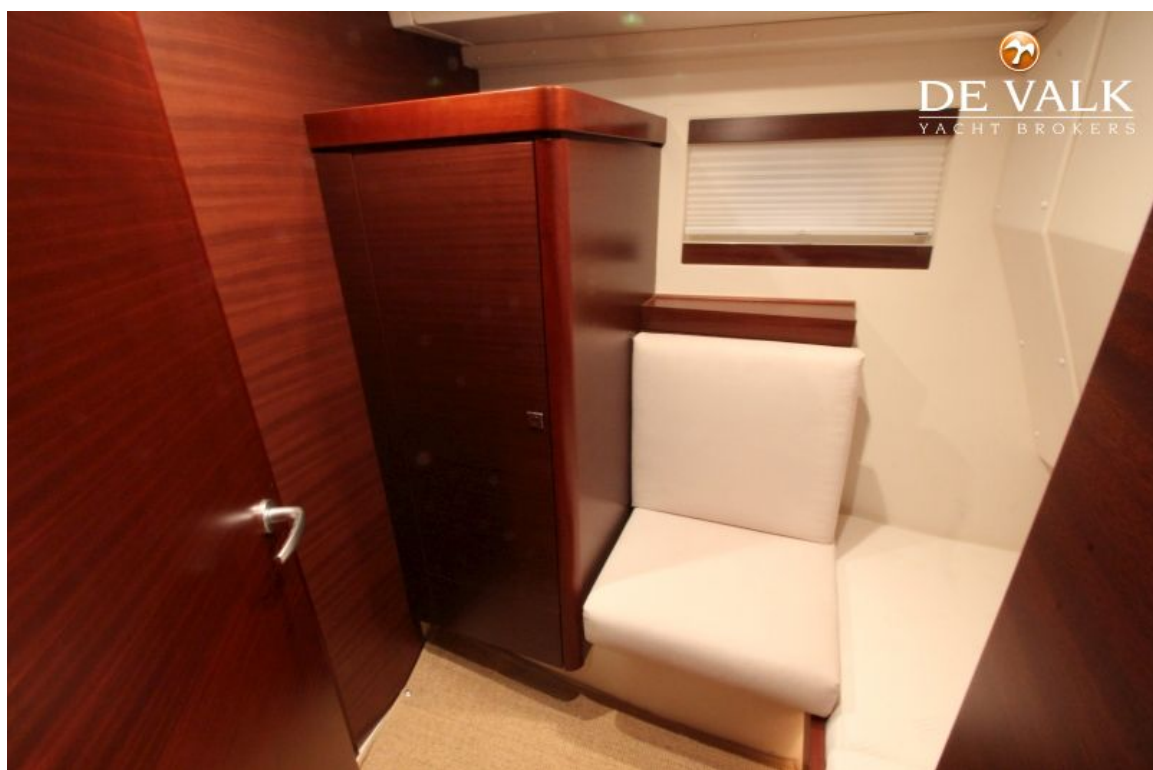
FJORD 40 CRUISER



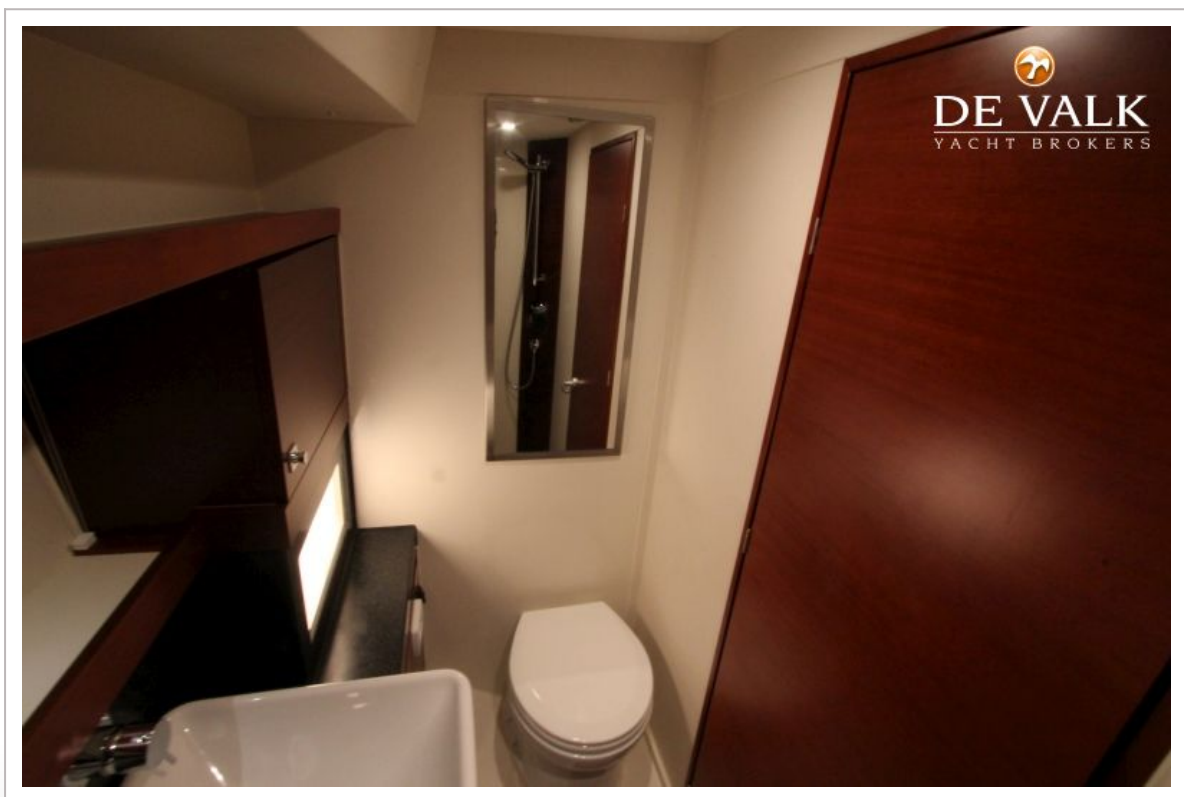
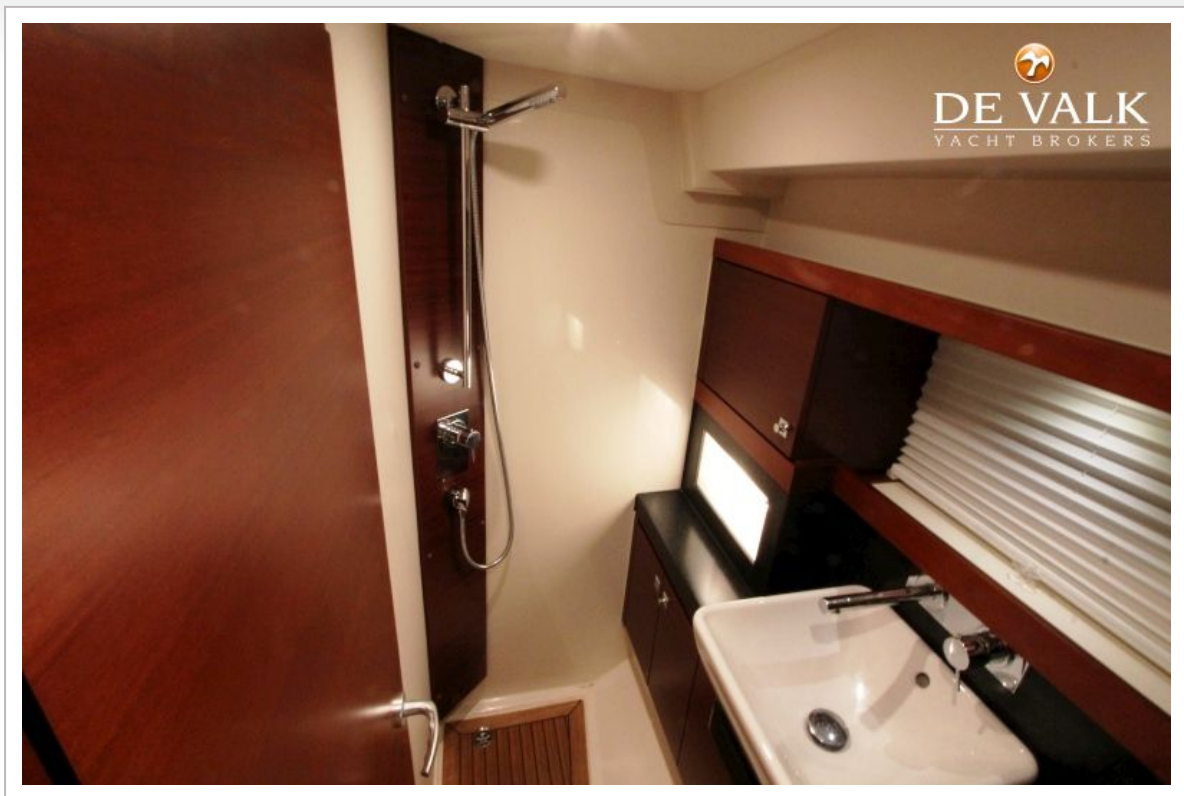
FJORD 40 CRUISER



FJORD 40 CRUISER



FJORD 40 CRUISER



FJORD 40 CRUISER

