



APREAMARE 45 COMFORT

APREAMARE 45 COMFORT

BROKER'S COMMENTS

For more than half a century, Apreamare has not only produced boats, but it has produced authentic jewels. Their gozzo's are real treasures, handcrafted and well thought out whilst constructed with the most modern and advanced equipment. Highly skilled carpenters and shipwrights work closely together on each model of the standard range as well as the custom built boats. Apreamare today enjoys the reputation of being one of the most prestigious Italian sailing brands in the world, catering to a clientele with a passion for craftsmanship, luxury and exclusivity.

Leonard Bonnema

SPECIFICATIONS

Dimensions	13.62 x 4.48 x 1.25 (m)	Builder	Apreamare S.p.A
Built	2006	Cabins	2
Material	GRP	Berths	6
Engine(s)	2 x Volvo VVP D9	Hp/Kw	2 x 480.00 (hp), 352.80 (kw)
Asking price	sold (VAT)	Lying	contact Loosdrecht

CONTACT

Sales office	De Valk Amsterdam B.V.	Telephone	+31 (0)35 5829014
Address	Peperstraat 7 1411 PX Naarden NL	E-mail	amsterdam@devalk.nl

DISCLAIMER

These particulars are given in good faith as supplied but cannot be guaranteed.



APREAMARE 45 COMFORT

GENERAL

Model	APREAMARE 45 COMFORT
Type	motor yacht Motor yacht
LOA (m)	13,62
Beam (m)	4,48
Draft (m)	1,25
Air draft (m)	3,95
Year built	2006
Builder	Apreamare S.p.A
Country	Italy
Displacement (t)	17
CE norm	yes
Hull material	GRP
Hull colour	blue
Hull shape	deep-V
Deck finish	teak
Cockpit deck finish	teak
Window frame	stainless steel
Window material	toughened glass
Portholes	stainless steel
Fuel tank (litre)	stainless steel 1480
Freshwater tank (litre)	stainless steel 450
Blackwater tank (litre)	stainless steel
Wheel steering	hydraulic

ACCOMMODATION

Cabins	2
Berths	6
Interior	cherry
Open cockpit	yes
Heating	diesel ducted hot air Webasto



APREAMARE 45 COMFORT

Air-conditioning	yes
Dinette	yes
Dinette to convert into berth	yes
Galley	yes
Countertop	corian
Sink	stainless steel
Cooker	ceramic
Oven	Combi
Microwave	Combi
Fridge	yes
Freezer	yes
Hot water system	yes
Water pressure system	electrical
Owners cabin	double bed
Bed length (m)	2
Wardrobe	yes
Bathroom	en suite
Toilet	en suite
Toilet system	electric
Wash basin	in the bathroom
Shower	en suite
Guest cabin 1	yes
Wardrobe	yes
Bathroom	shared
Toilet	shared
Toilet system	electric
Wash basin	in the bathroom
Shower	shared

MACHINERY

No of engines	2
---------------	---



APREAMARE 45 COMFORT

Make	Volvo
Type	VVP D9
HP	480,00
kW	352,80
Year installed	2006
Maximum speed (kn)	30
Cruising speed (kn)	24.00
Engine hours	Ca 700
Drive	V-drive
Engine controls	electrical
Gearbox	hydraulic
Bowthruster	electric
Propeller type	fixed
Propeller blades	4
Propeller shaft material	stainless steel
Electric bilge pump	yes
Generator	wet exhaust 3 KW Mase
Start battery	2
Service battery	2
Generator battery	1
Bowthruster battery	1
Battery charger	yes
Shorepower	with cable
Trimtabs	yes

NAVIGATION

Compass	yes
Electric compass	yes
Depth sounder	yes
VHF	Navman
Autopilot	RM ST 6001



Rudder angle indicator	yes
Radar	4KW Raymarine
Plotter	Navionics

EQUIPMENT

Fixed windscreen	Stainless Steel
Cockpit cover	Vertical drop
Sun awning	yes
Cockpit cushions	yes
Cockpit table	yes
Bathing platform	yes
Boarding ladder	yes
Gangway	Hydraulic Opac Mare
Deck shower	yes
Anchor	Stainless Steel
Anchor chain	70 mtr.
Windlass	electrical
Dinghy	rigid hull
Outboard	yes
Horn	electric
Fenders	yes
Mooring lines	yes
TV	yes
Auto extinguisher system	yes



APREAMARE 45 COMFORT



APREAMARE 45 COMFORT



APREAMARE 45 COMFORT



APREAMARE 45 COMFORT



APREAMARE 45 COMFORT



APREAMARE 45 COMFORT



APREAMARE 45 COMFORT



APREAMARE 45 COMFORT



APREAMARE 45 COMFORT



APREAMARE 45 COMFORT



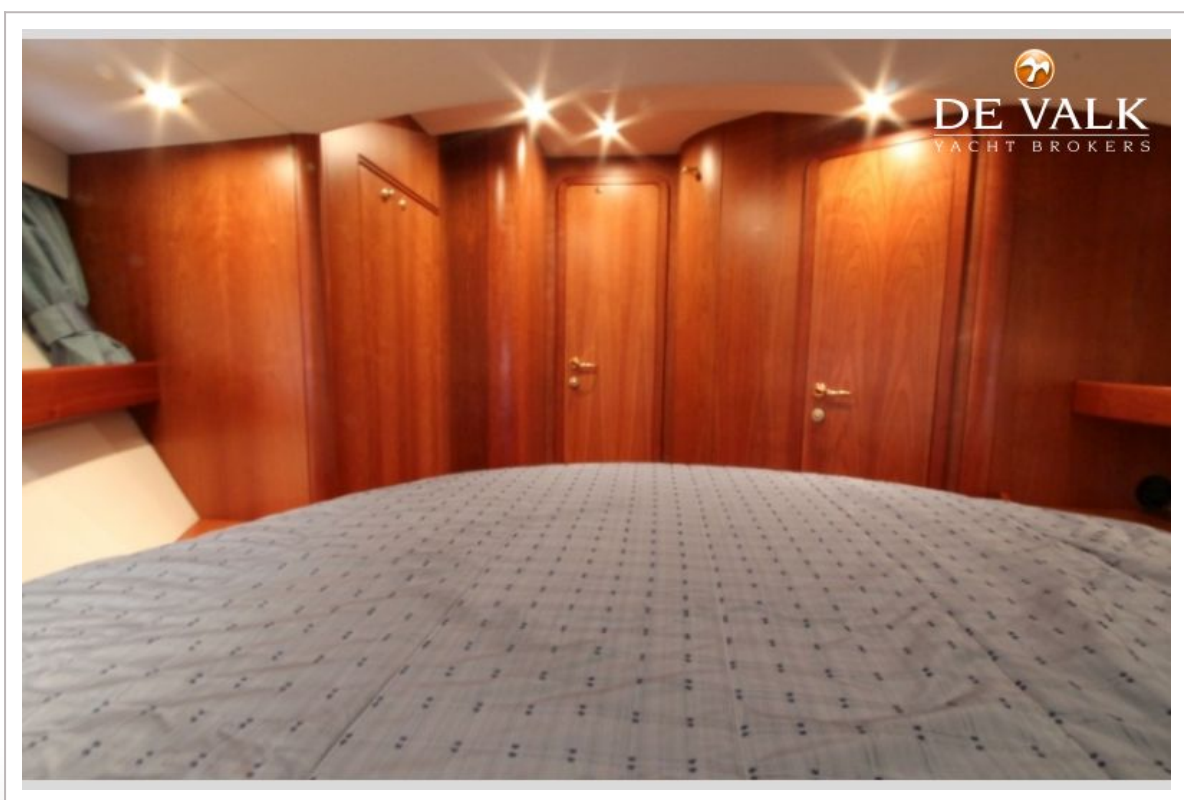
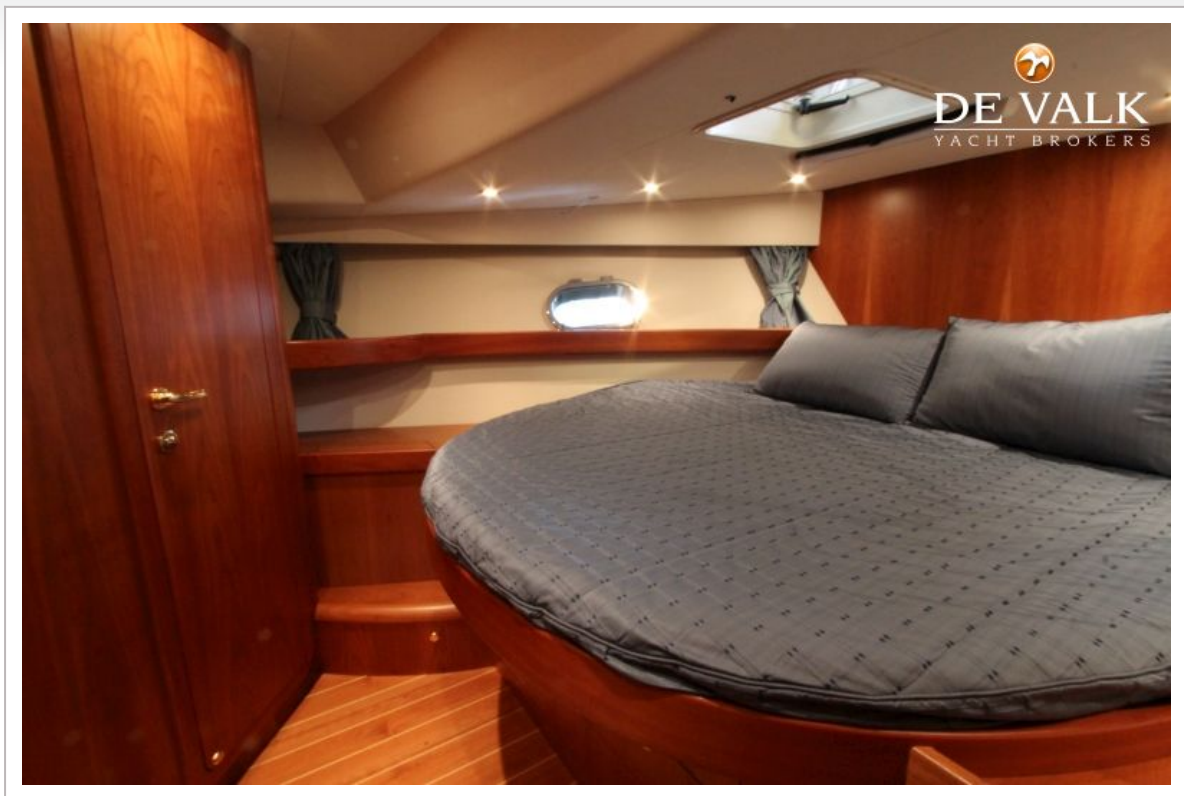
APREAMARE 45 COMFORT



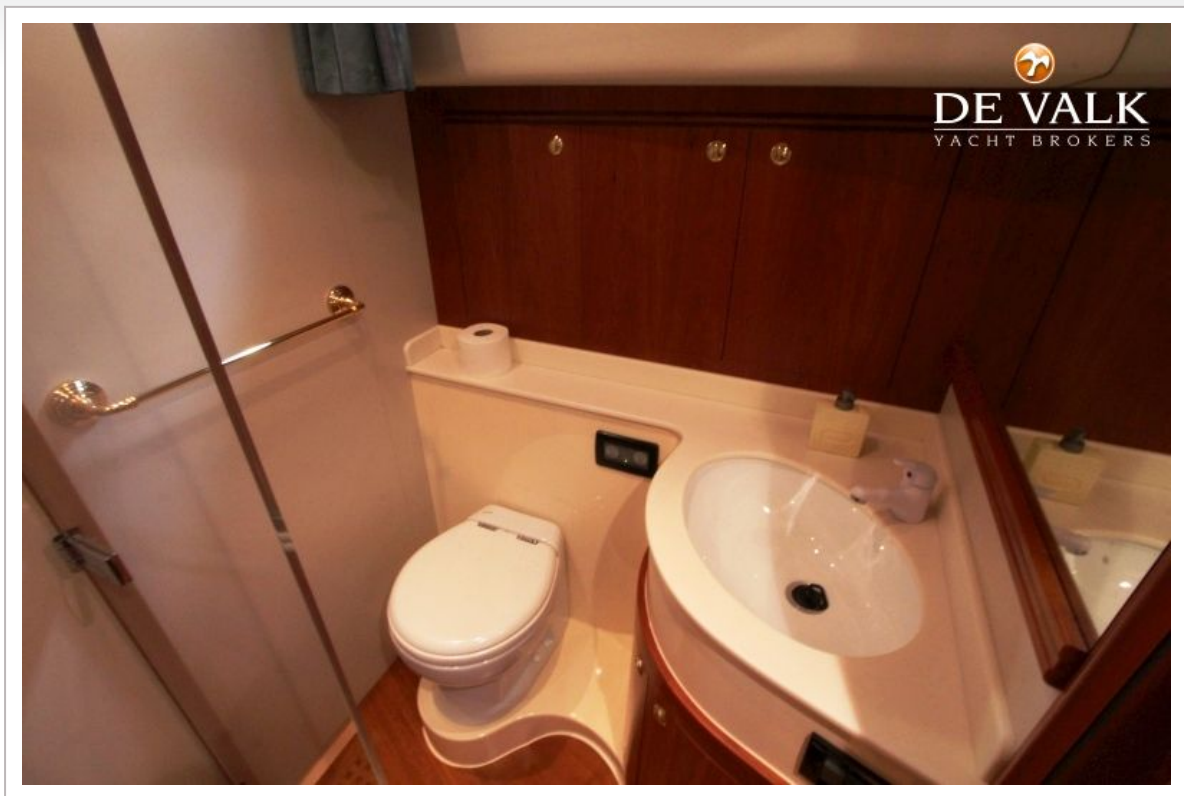
APREAMARE 45 COMFORT



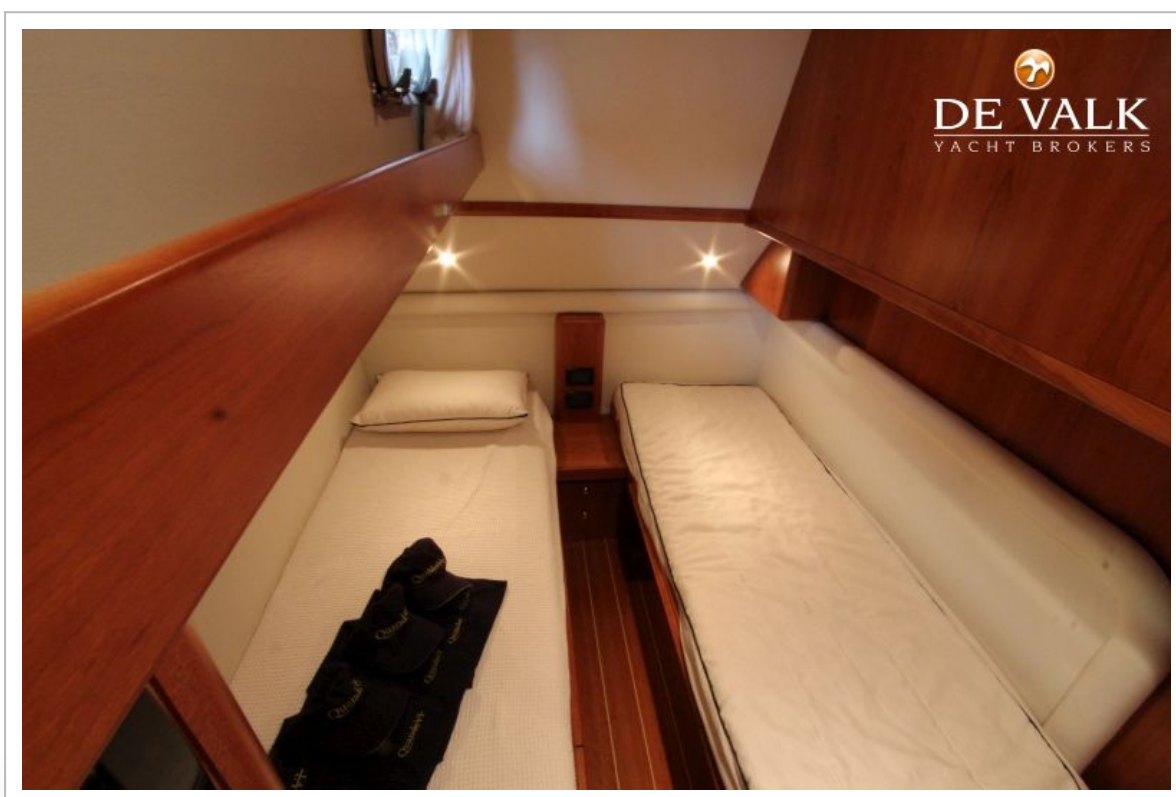
APREAMARE 45 COMFORT



APREAMARE 45 COMFORT



APREAMARE 45 COMFORT



APREAMARE 45 COMFORT



APREAMARE 45 COMFORT



APREAMARE 45 COMFORT

