



DE VALK
YACHT BROKERS



ABATI YACHTS 55 PORTLAND



DE VALK
YACHT BROKERS

ABATI YACHTS 55 PORTLAND

BROKER'S COMMENTS

This Abati yachts 55 Portland is a top yacht with pedigree that will impress you. The Italian lobster & picnic design combines space, beauty and quality in a way only Italians can. The Abati yachts 55 Portland has stunning performance due to her hull design and powerful MAN diesel engines. 3 double cabins plus crew quarters. Used for only a few days a year and stored on the hard in a shed every year during the late autumn winter and spring.

Peter van Diggele

SPECIFICATIONS

Dimensions	17.90 x 5.32 x 1.25 (m)	Builder	Cantieri Abati
Built	2006	Cabins	4
Material	GRP	Berths	7
Engine(s)	2 x MAN R6-800 turbo diesel	Hp/Kw	2 x 800.00 (hp), 588.00 (kw)
Asking price	sold (VAT)	Lying	elsewhere / Not at sales office

CONTACT

Sales office	De Valk Loosdrecht B.V.	Telephone	+31 (0)35 582 90 30
Address	't Breukeleveense Meentje 6 1231LM Loosdrecht / Wijdmeren NL	E-mail	loosdrecht@devalk.nl

DISCLAIMER

These particulars are given in good faith as supplied but cannot be guaranteed.



ABATI YACHTS 55 PORTLAND

GENERAL

Model	ABATI YACHTS 55 PORTLAND
Type	motor yacht
LOA (m)	17,90
LWL (m)	14,60
Beam (m)	5,32
Draft (m)	1,25
Air draft (m)	5,10
Headroom (m)	2,30
Year built	2006
Launched	2006
Builder	Cantieri Abati
Country	Italy
Displacement (t)	26
CE norm	A
Hull material	GRP
Hull colour	blue Awl Gripp
Hull shape	deep-V With 25 cm speed stabelizer.
Superstructure material	GRP
Rubbing strake	stainless steel
Deck material	GRP
Deck finish	teak
Superstructure deck finish	paint
Cockpit deck finish	teak
Antifouling (year)	2017
Dorades	stainless 2
Window frame	aluminium Black
Window material	glass
Deckhatch	3 x Stainless, 4 x Alu. 7 Nemo
Portholes	stainless steel 6
Fuel tank (litre)	stainless steel 3100



ABATI YACHTS 55 PORTLAND

Level indicator (fuel tank)	yes
Freshwater tank (litre)	stainless steel 1000
Level indicator (freshwater)	yes
Blackwater tank (litre)	GRP 150
Level indicator (blackwater)	yes
Blackwater tank extraction	deck extraction + pump
Greywater tank (litre)	stainless steel 300
Wheel steering	hydraulic
Inside helm position	yes
Emergency tiller	yes
Extra info	Electric operated engineroom hatch
Extra info	Emergency start on service batteries
Extra info	Separ fuel filters and oil extraction pump

ACCOMMODATION

Cabins	4
Berths	7
Interior	mahogany
Floor	teak and holly
Open cockpit	yes
Aft deck	yes
Pilot house	yes
Saloon	yes
Headroom saloon (m)	Over 2,2 M.
Air-conditioning	reverse cycle airco Individual units for ech cabin, the salon and galley
Navigation center	yes
Chart table	yes
Dinette	In salon and galley
Dinette to convert into berth	In galley
Opening door to aft deck	Mahogany



ABATI YACHTS 55 PORTLAND

Galley	yes
Countertop	stainless steel
Sink	stainless steel Double
Cooker	electric 4 burner
Oven	Bosch oven and Grill
Extractor	Whirlpool
Gas alarm	yes
Fridge	120 liter
Freezer	30 liter
Hot water system	220V + engine Quick 45 liter
Water pressure system	electrical
Owners cabin	French bed
Bed length (m)	2,00 x 1,60
Wardrobe	hanging/drawers/shelves
Bathroom	en suite
Toilet	en suite With bidet
Toilet system	electric
Wash basin	at the toilet
Shower	en suite
Guest cabin 1	twin single
Bed length (m)	2 x 200 x 65
Wardrobe	drawers and shelves
Bathroom	en suite
Toilet	en suite
Toilet system	electric
Wash basin	in the bathroom
Shower	en suite
Guest cabin 2	twin single
Bed length (m)	2 x 200 x 65
Wardrobe	drawers and shelves
Bathroom	en suite
Toilet	en suite



ABATI YACHTS 55 PORTLAND

Toilet system	electric
Wash basin	in the bathroom
Shower	en suite
Crew cabin(s)	1
Bathroom (crew)	1
Toilet (crew)	1
Toilet system	electric
Wash basin	at the toilet
Shower (crew)	yes
Washing machine	Hoover
Wet bar	sink and fridge In the pilothouse
Extra info	Large technical space and storage

MACHINERY

No of engines	2
Make	MAN
Type	R6-800 turbo
HP	800,00
kW	588,00
Fuel	diesel
Year installed	2006
Maximum speed (kn)	30+ kn. @ 330 l/h
Cruising speed (kn)	17 kn. @ 160 l/h
Consumption (l/hr)	35 l/h @ 9 knots
Engine hours	715
Engine cooling system	freshwater heat exchanger
Drive	shaft
Shaft seal	yes
Engine controls	electrical
Gearbox	hydraulic
Bowthruster	electric Vetus



ABATI YACHTS 55 PORTLAND

Sternthruster	electric Maxpower
Exhaust	watercooled
Propeller type	fixed
Propeller blades	4 blades
Propeller shaft material	stainless steel
Shaft lubrication	water
Manual bilge pump	3
Electric bilge pump	3
Bilge alarm	yes
Electrical installation	12V (gen. start) 24 V DC (engines and ship service) and 240 V AC
Generator	wet exhaust Fischer Panda (rebuilt)
Running hours generator	Approx 100 after rebuilt in 2015
Batteries	24 Volt
Start battery	4 x "Red Top" optima 55 ah each (2015)
Service battery	4 x 165 ah AMG (2017)
Generator battery	1 x 55 Ah
Battery monitor	Integrated ship system
Battery charger	Quick 60 Amp 24 Volt
Inverter	Sine Wave J1302
Diode battery combiners	yes
Shorepower	with cable
Trimtabs	Hydraulic
Extra info	10 liters/hour@ 6 knots

NAVIGATION

Compass	Riviera Uranus magnetic
Electric compass	On Raymarine
Depth sounder/log	Raymarine ST 60 Tridata
Windset	Raymarine ST 60 (not working)
VHF	Raymarine R240E with speaker



ABATI YACHTS 55 PORTLAND

Autopilot	Raymarine ST6000
Rudder angle indicator	yes
Radar/GPS/plotter	Raymarine C120
Navtex	ICS Mcmurdo VI (defect)
Navigation lights	yes
Searchlight	Jabsco remote controled

EQUIPMENT

Fixed hardtop	yes
Cockpit cover	Convertible to bimini
Sun awning	For pilothouse windows
Cockpit cushions	And foredeck
Cockpit table	Foldable with cover
Cockpit chairs	2 x
Bathing platform	1,30-1,50 covered with teak grating
Boarding ladder	Folding stainless on platform
Transom door	yes
Gangway	Besenzoni Hydraulic
Deck shower	yes
Anchor	Bruce Trefoil 30 KG RVS
Anchor chain	11 mm 60 meter
Windlass	yes
Capstan	Quick electrical 1700 Watt
Windlass aft	2 x Quick 1000 Watt
Deck wash	yes
Dinghy	Lomac 2,85 RIB
Outboard	Mercury 6 hp
Sea railing	stainless steel
Grab rail (superstructure)	stainless steel
Pushpit	yes
Pulpit	1 meter long



ABATI YACHTS 55 PORTLAND

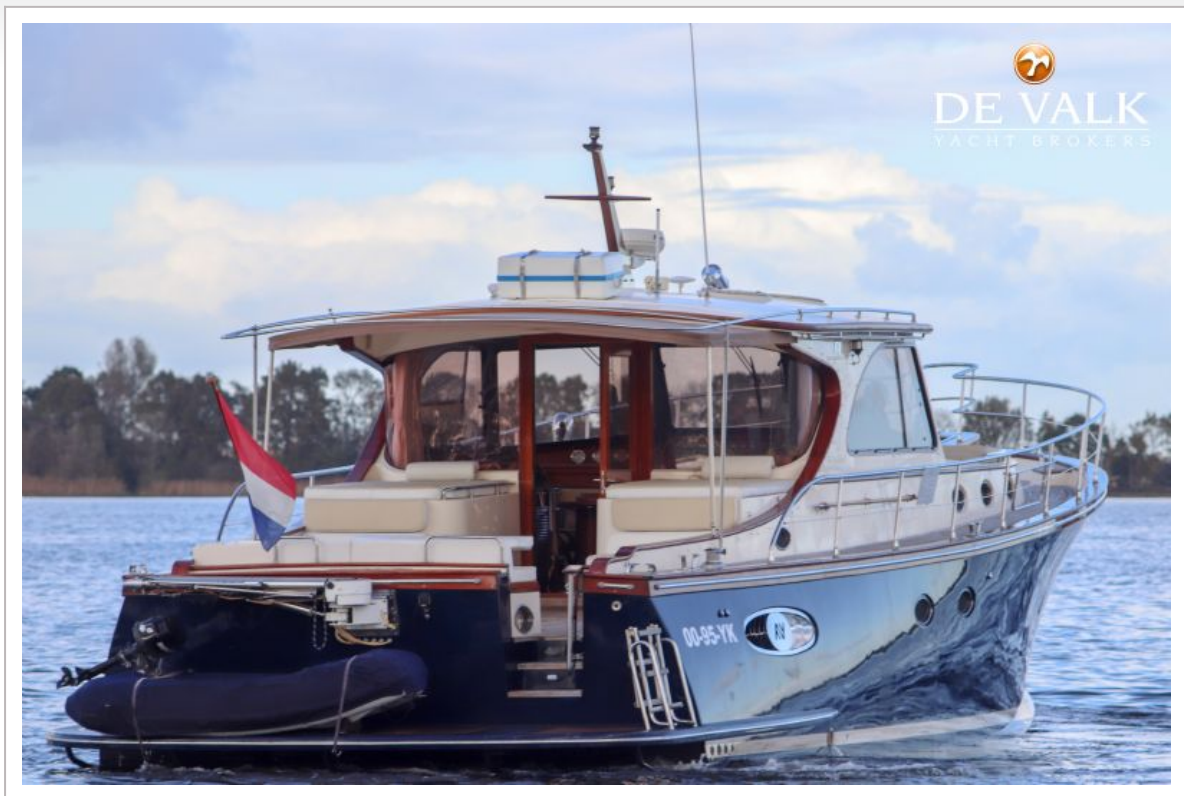
Life raft	container 12 pers
Last life raft survey	Needs service
Lifejackets	Two lifejackets in each cabin plus 1 in crewcabin + 2 spare
Wiper	3 x with washdown
Horn	yes
Radar reflector	yes
Fenders	8 with holders 4 each
Mooring lines	8
Spare parts	yes
Tools	yes
TV	Samsung
TV receiver	DVBT with antennae no card
Radio-cd player	4 x Blaupunkt Vancouver 35 radio CD one for each cabin including
DVD player	LG DVD player in Salon
Cockpit speakers	2 x
Speakers in salon	4 x
Speakers in cabin	2 in each cabin
Clock - barometer	Hygro and temperature
Fire extinguisher	4 x
Extra info	Sliding windows
Extra info	Leather upholstery
Extra info	Fly screens at all windows, curtains for all windows and hatches



ABATI YACHTS 55 PORTLAND



ABATI YACHTS 55 PORTLAND



ABATI YACHTS 55 PORTLAND



ABATI YACHTS 55 PORTLAND



ABATI YACHTS 55 PORTLAND



ABATI YACHTS 55 PORTLAND



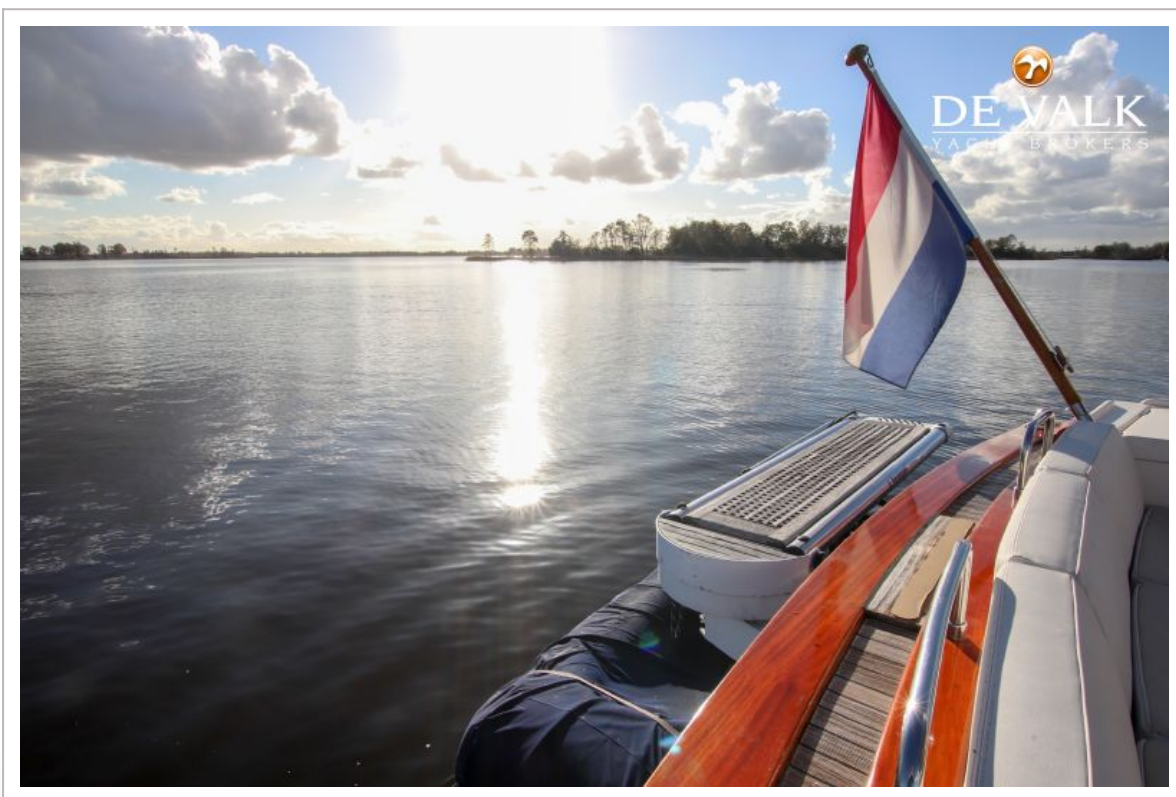
ABATI YACHTS 55 PORTLAND



ABATI YACHTS 55 PORTLAND



ABATI YACHTS 55 PORTLAND



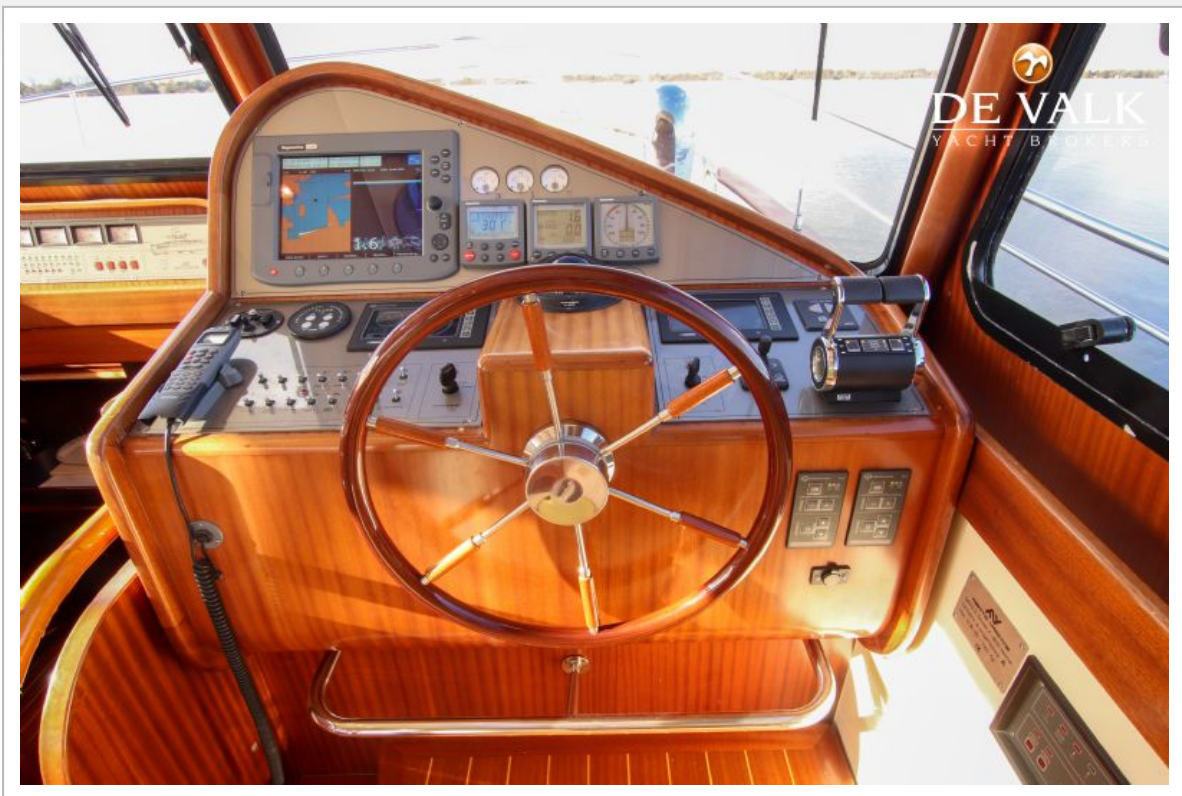
ABATI YACHTS 55 PORTLAND



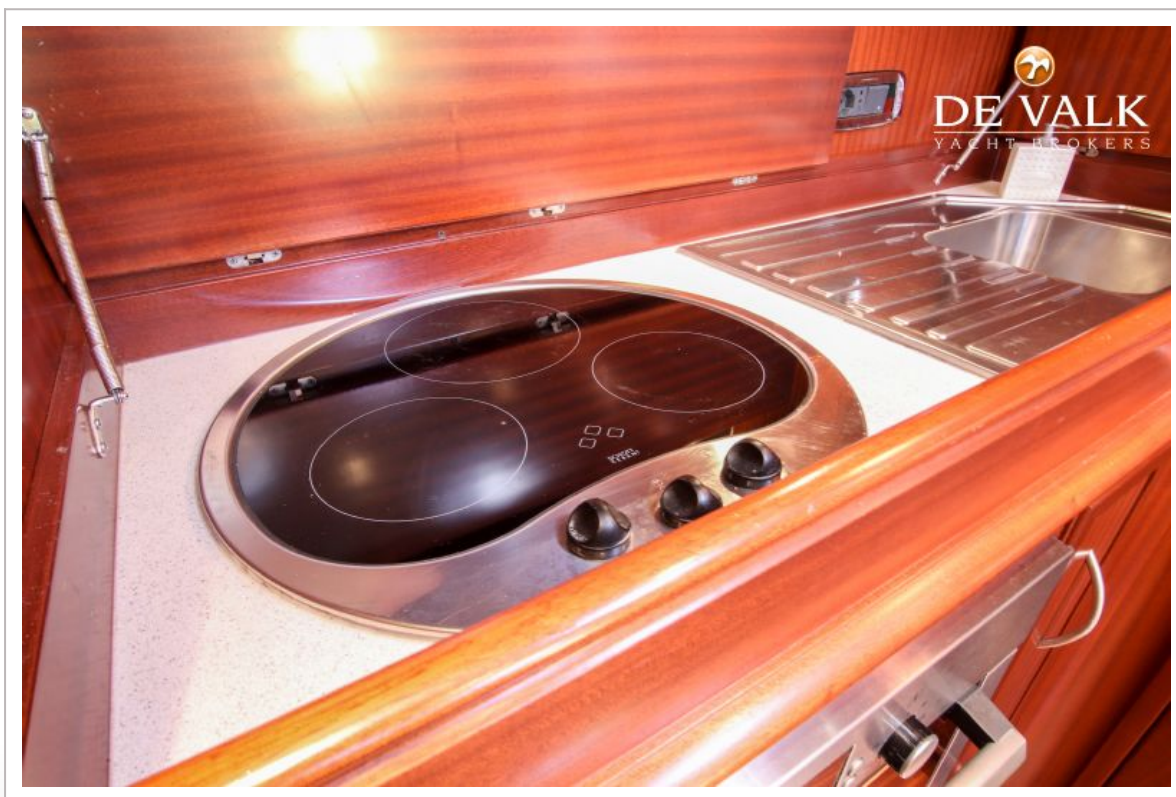
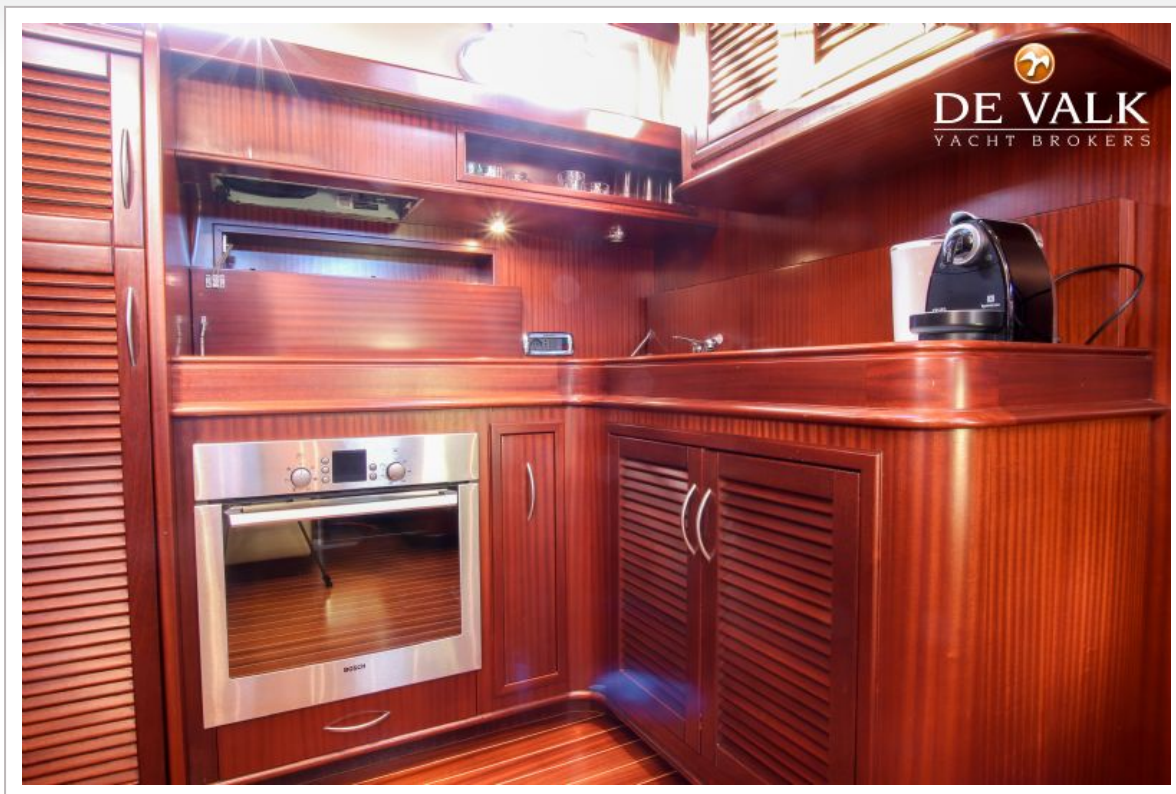
ABATI YACHTS 55 PORTLAND



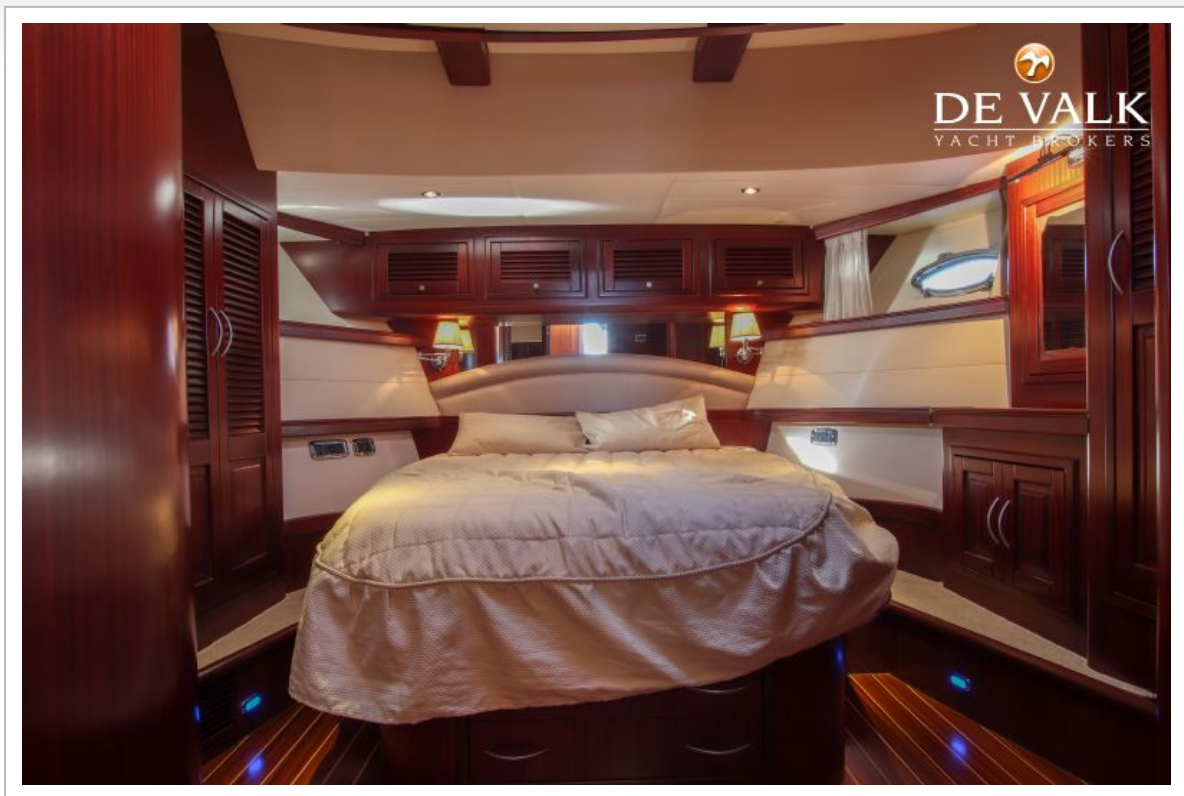
ABATI YACHTS 55 PORTLAND



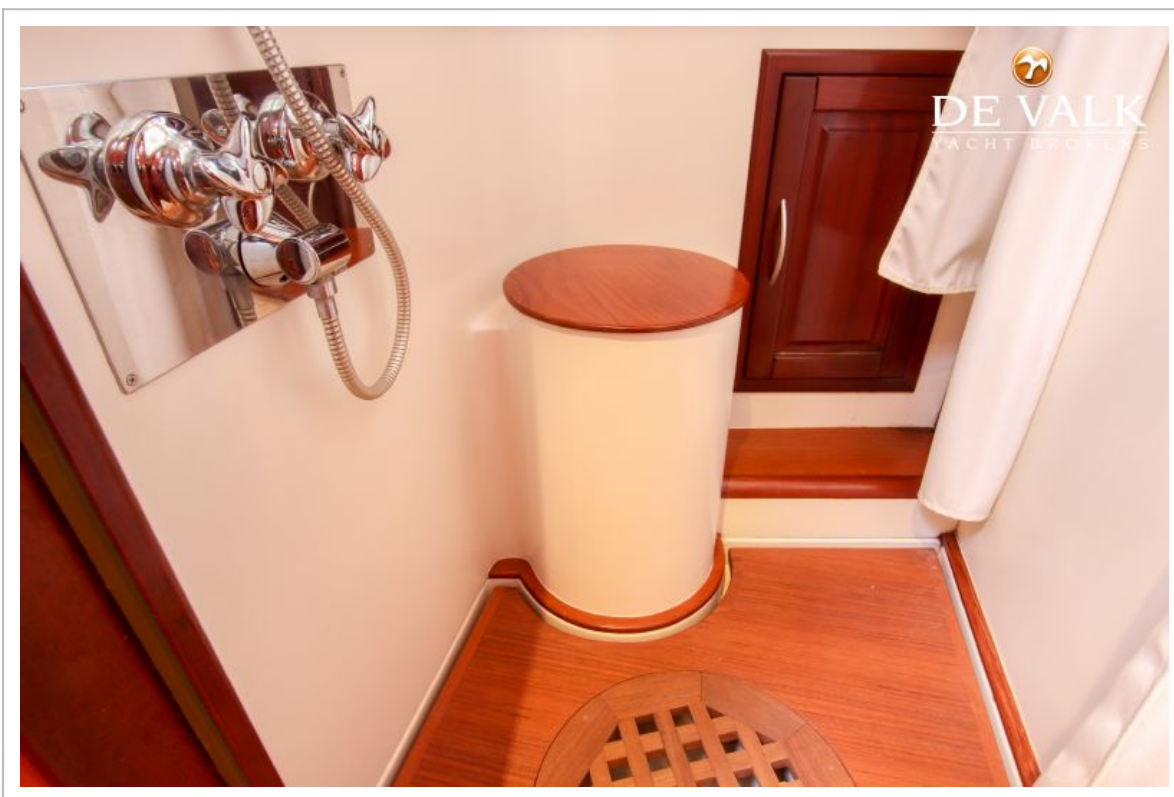
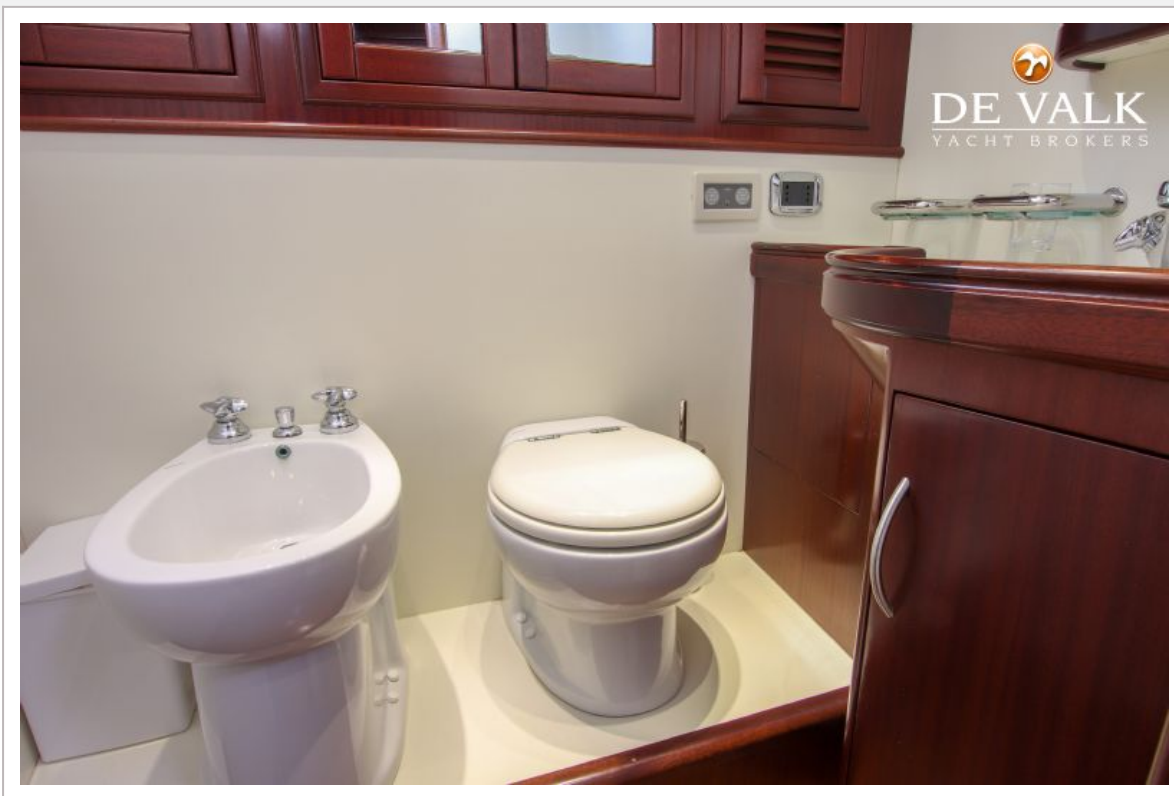
ABATI YACHTS 55 PORTLAND



ABATI YACHTS 55 PORTLAND



ABATI YACHTS 55 PORTLAND



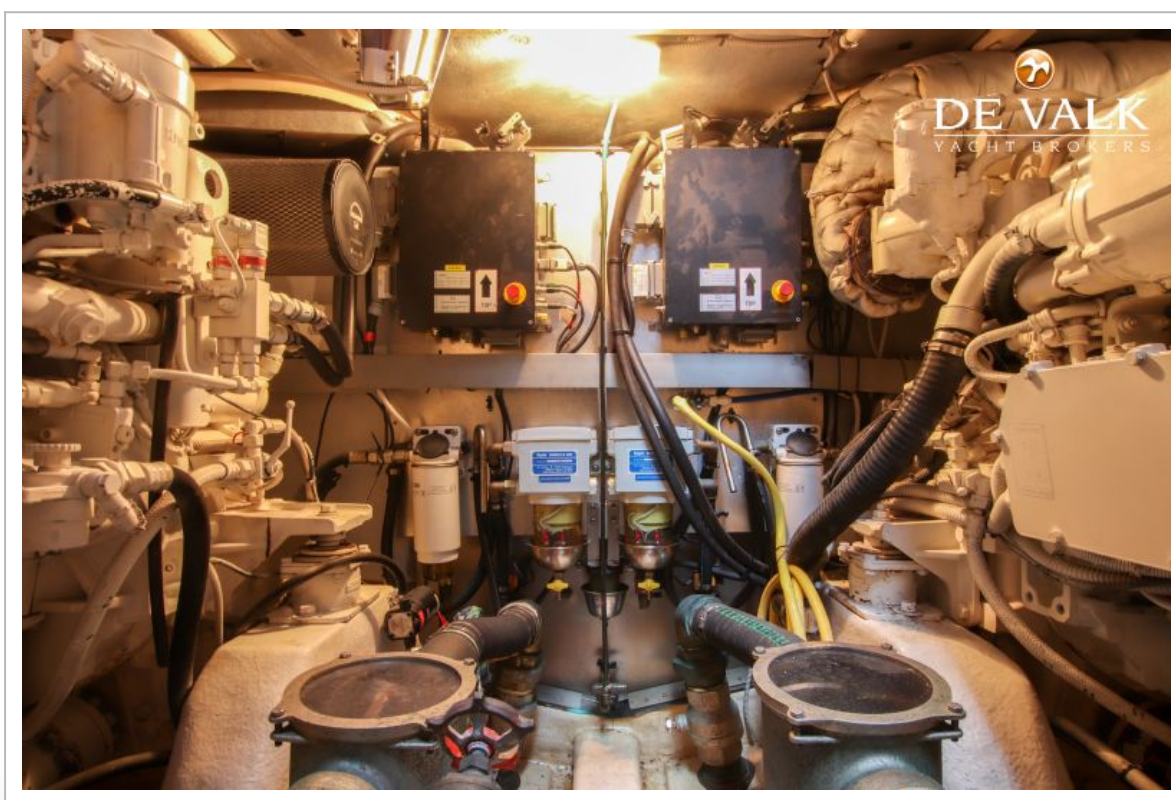
ABATI YACHTS 55 PORTLAND



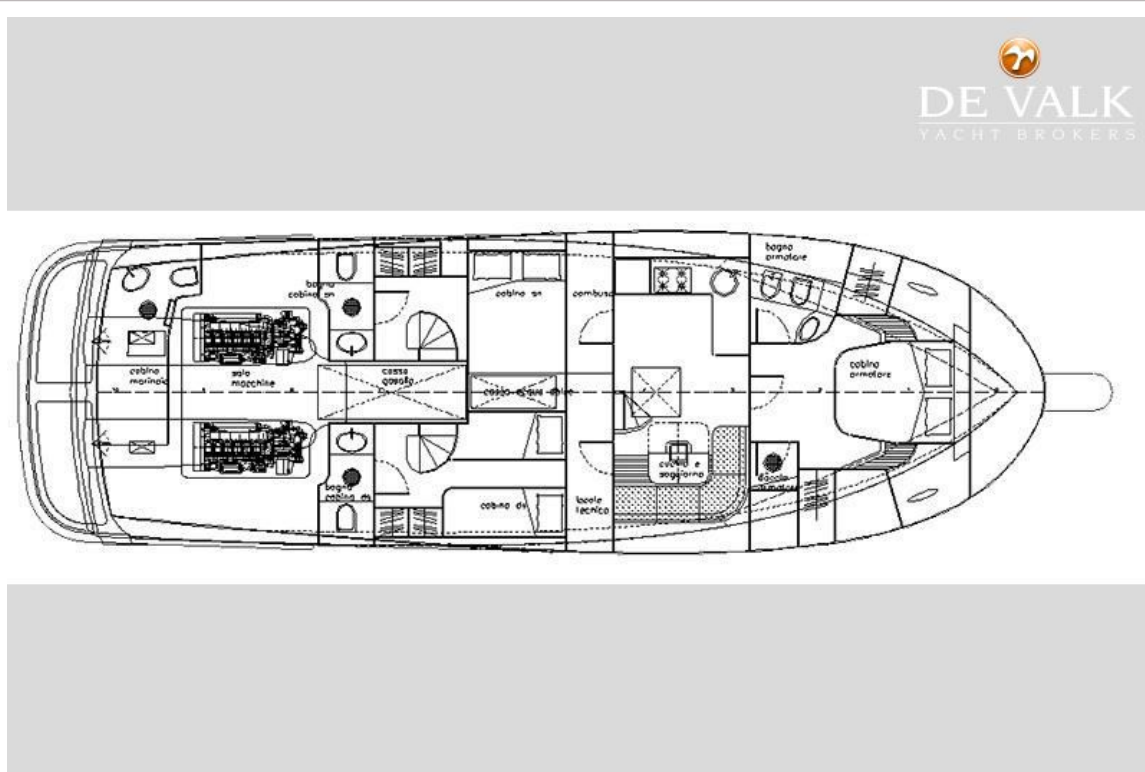
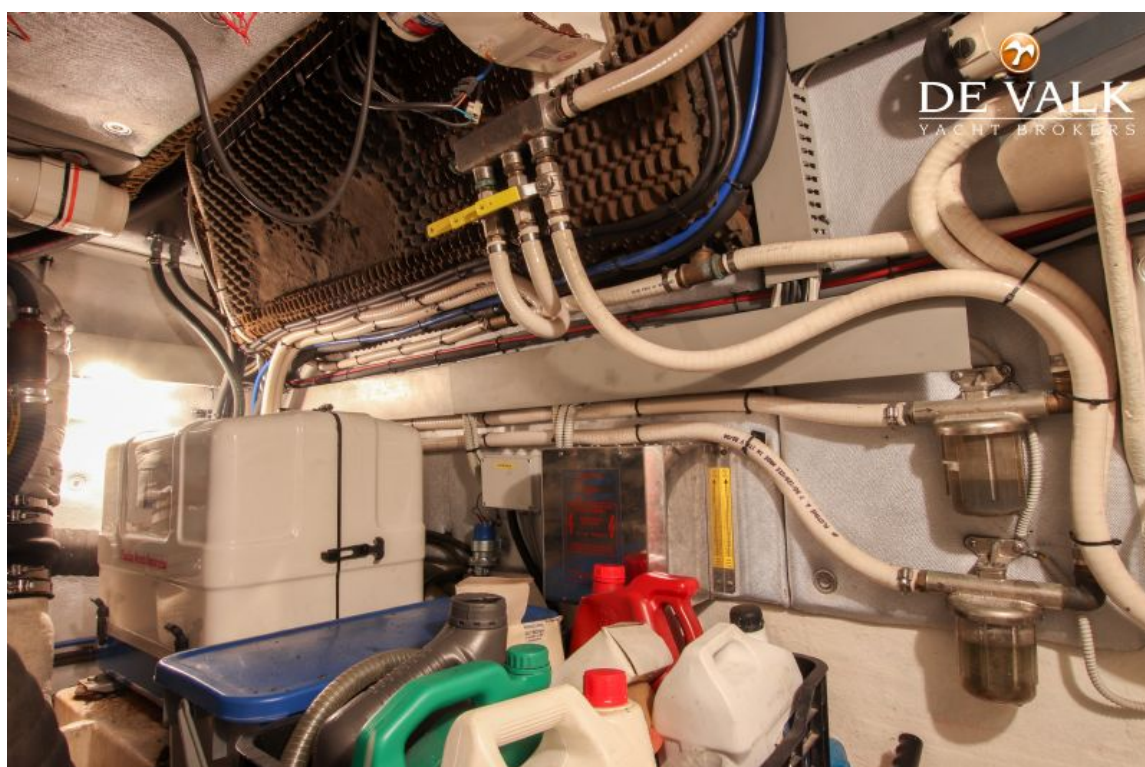
ABATI YACHTS 55 PORTLAND



ABATI YACHTS 55 PORTLAND



ABATI YACHTS 55 PORTLAND



ABATI YACHTS 55 PORTLAND

