



DE VALK
YACHT BROKERS



SUCCES 108 ULTRA



DE VALK
YACHT BROKERS

SUCCES 108 ULTRA

BROKER'S COMMENTS

Succes 108 Ultra Sport, well lined and conveniently divided yacht. The spacious owner's cabin features a French bed and bathroom ensuite. The guest cabin is equipped with bunk beds and a own toilet. The ship is also fitted out with an electric bow- and stern thruster. The reliable Deutz diesel engine has only 900 runninghours. The Succes 108 Ultra Sport is beautifully maintained.

Peter van Diggele

SPECIFICATIONS

Dimensions	10.80 x 3.65 x 1.00 (m)	Builder	Succes Yachts
Built	2004	Cabins	2
Material	Steel	Berths	6
Engine(s)	1 x Vetus Deutz DT64 422 A diesel	Hp/Kw	159.00 (hp), 116.87 (kw)
Asking price	sold (VAT)	Lying	at sales office

CONTACT

Sales office	De Valk Loosdrecht B.V.	Telephone	+31 (0)35 582 90 30
Address	't Breukeleveense Meentje 6 1231LM Loosdrecht / Wijdmeren NL	E-mail	loosdrecht@devalk.nl

DISCLAIMER

These particulars are given in good faith as supplied but cannot be guaranteed.



SUCCES 108 ULTRA

GENERAL

Model	SUCCES 108 ULTRA
Type	motor yacht
LOA (m)	10,80
Beam (m)	3,65
Draft (m)	1,00
Air draft (m)	2,65
Headroom (m)	2,00
Year built	2004
Builder	Succes Yachts
Country	The Netherlands
Displacement (t)	8,5
Hull material	steel
Hull colour	off-white
Hull shape	hard chine
Superstructure material	steel
Rubbing strake	stainless steel
Deck material	steel
Deck finish	anti-slip paint
Superstructure deck finish	teak Aft deck
Window frame	aluminium
Window material	glass
Radar arch	collapsible
Fuel tank (litre)	2x 300
Freshwater tank (litre)	500
Greywater tank (litre)	250
Wheel steering	hydraulic
Outside helm position	hydraulic

ACCOMMODATION

Cabins	2
---------------	---



SUCCES 108 ULTRA

Berths	6
Interior	mahogany
Floor	carpet
Headroom saloon (m)	2,00
Heating	calorgas ducted hot air Webasto
Aft Cabin	yes
Dinette	yes
Dinette to convert into berth	yes
Galley	yes
Countertop	yes
Sink	stainless steel
Cooker	calor gas
Microwave	yes
Fridge	Coolmatic
Hot water system	220V + engine
Water pressure system	electrical
Owners cabin	french bed
Wardrobe	drawers
Bathroom	en suite
Toilet	en suite
Toilet system	manual
Wash basin	at the toilet
Shower	shared
Guest cabin 1	bunk bed
Wardrobe	drawers
Bathroom	en suite
Toilet	en suite
Toilet system	manual
Wash basin	in the bathroom

MACHINERY



SUCCES 108 ULTRA

No of engines	1
Make	Vetus Deutz
Type	DT64 422 A
HP	159,00
kW	116,87
Fuel	diesel
Maximum speed (kn)	10
Cruising speed (kn)	8
Consumption (l/hr)	8
Engine hours	900
Engine cooling system	freshwater heat exchanger
Drive	shaft
Gearbox	hydraulic ZF 45
Bowthruster	electric BCS
Sternthruster	electric BCS
Thrust bearing	yes
Propeller type	fixed 22" x 18"
Propeller blades	4
Propeller shaft material	stainless steel
Shaft lubrication	water
Electric bilge pump	yes
Electrical installation	12/220 Volt
Start battery	1x 105 Ah
Service battery	2x 105 Ah
Battery monitor	Mastervolt
Battery charger/inverter	Victron
Shorepower	yes

NAVIGATION

Electric compass	Raytheon ST-40
Rudder angle indicator	VDO



GPS

Geonav

EQUIPMENT

Sprayhood

yes

Bathing platform

yes

Boarding ladder

stainless steel

Anchor

yes

Anchor chain

yes

Windlass

Vetus

Davits

stainless steel

Sea railing

stainless steel

Grab rail (superstructure)

stainless steel

Wiper

yes

Horn

yes

TV

Samsung

Radio-cd player

JVC



SUCCES 108 ULTRA



SUCCES 108 ULTRA



SUCCES 108 ULTRA



SUCCES 108 ULTRA



SUCCES 108 ULTRA



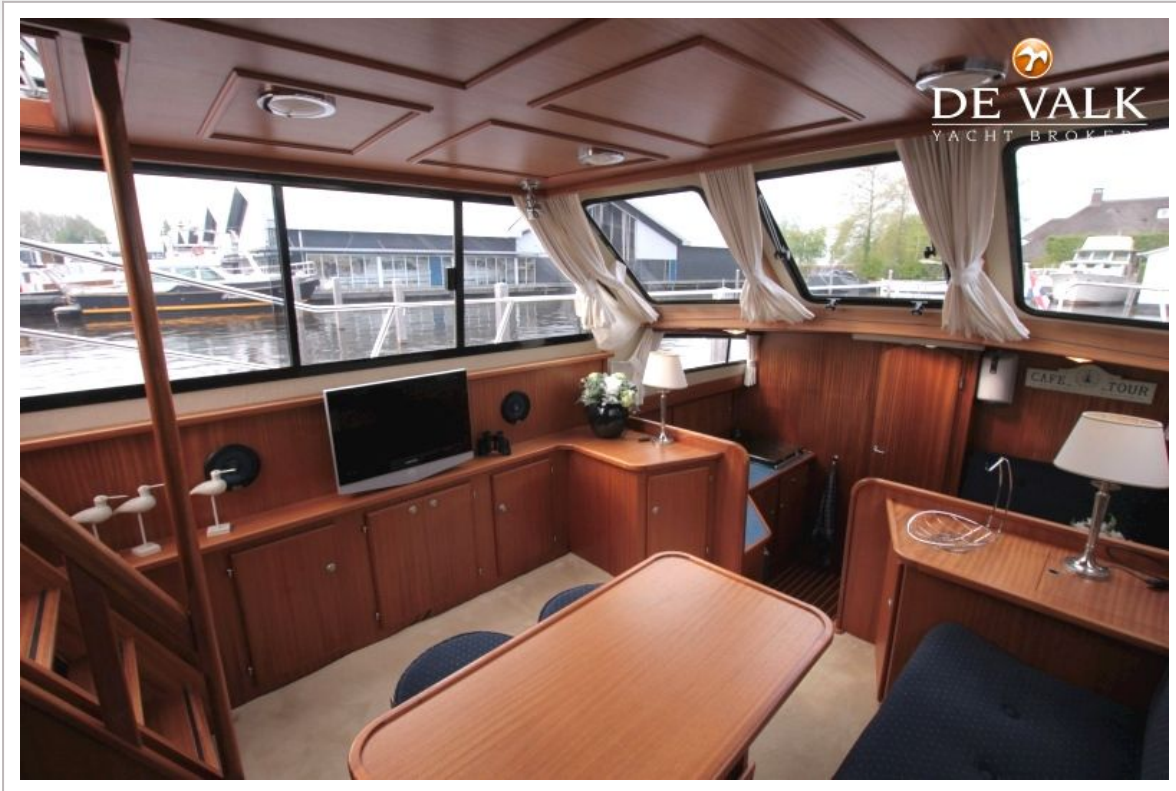
SUCCES 108 ULTRA



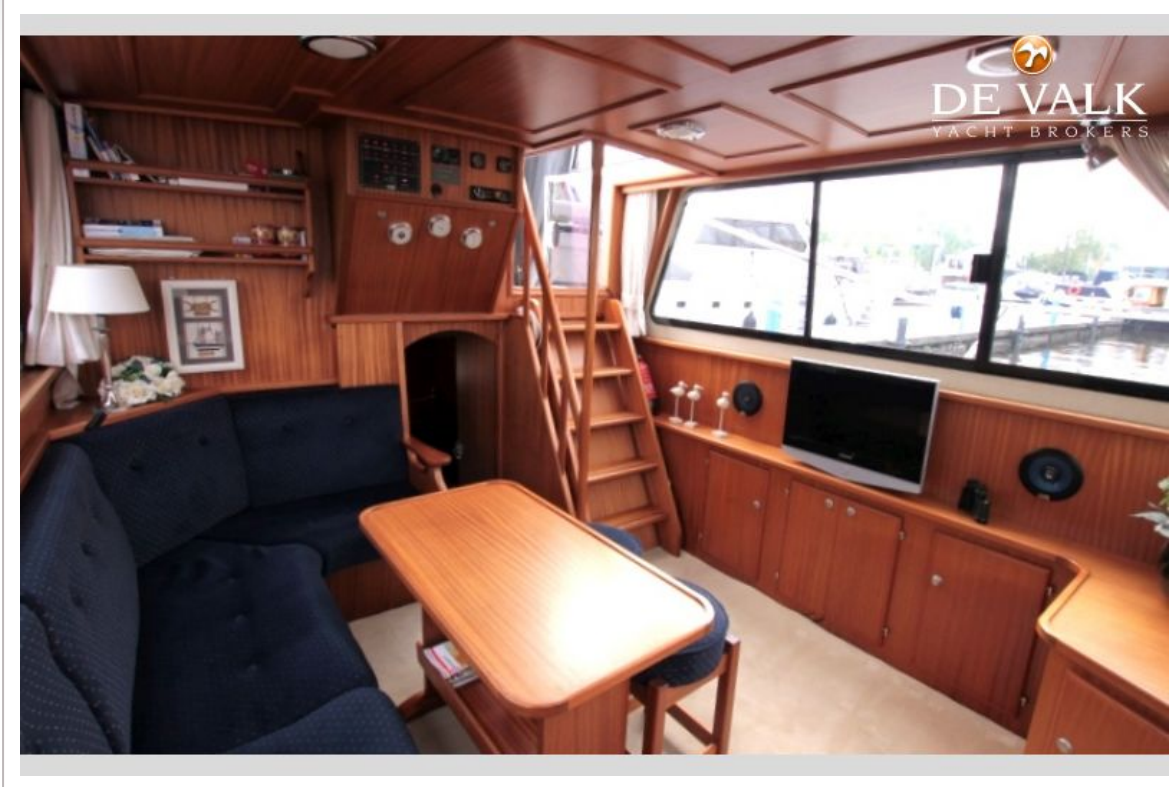
SUCCES 108 ULTRA



SUCCES 108 ULTRA



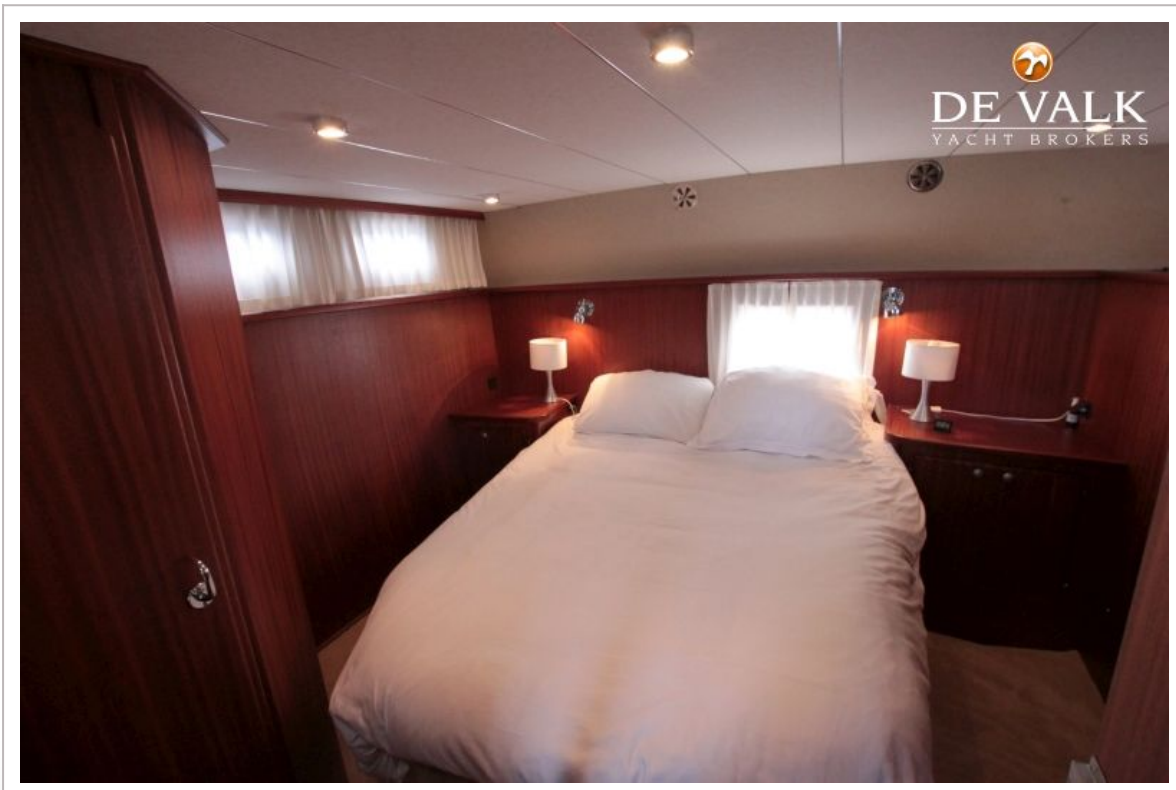
SUCCES 108 ULTRA



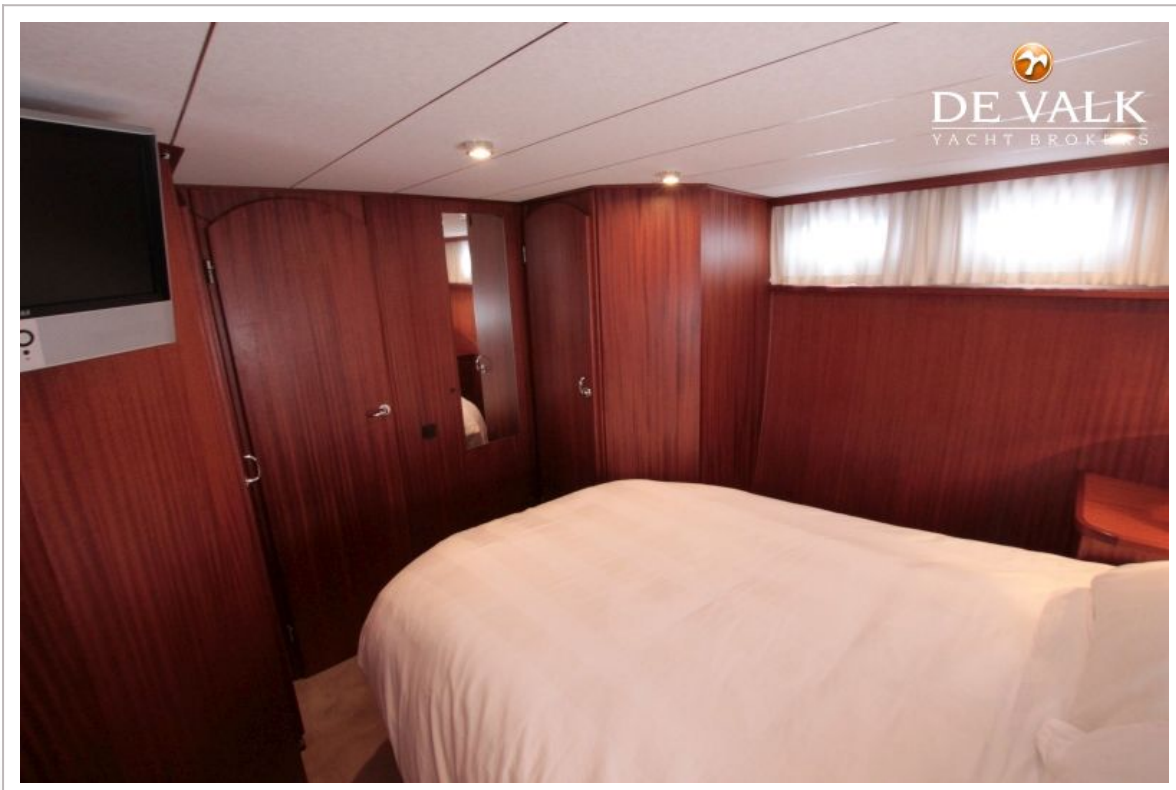
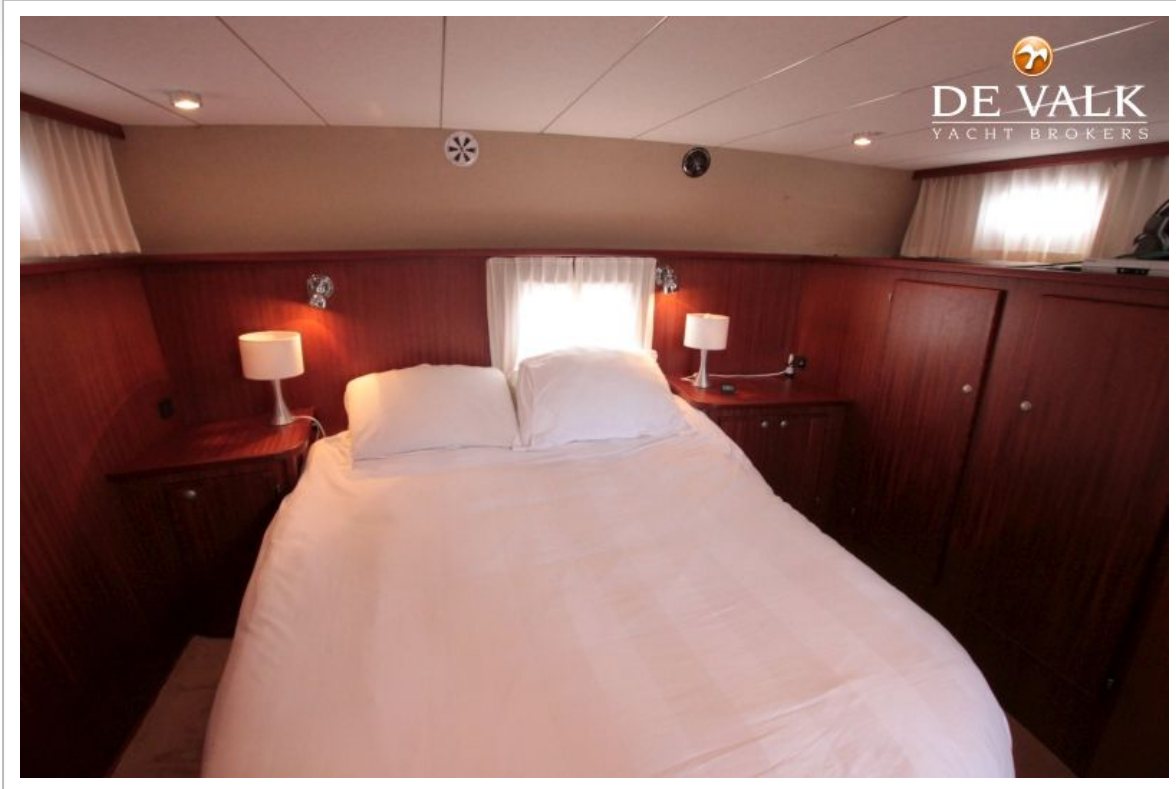
SUCCES 108 ULTRA



SUCCES 108 ULTRA



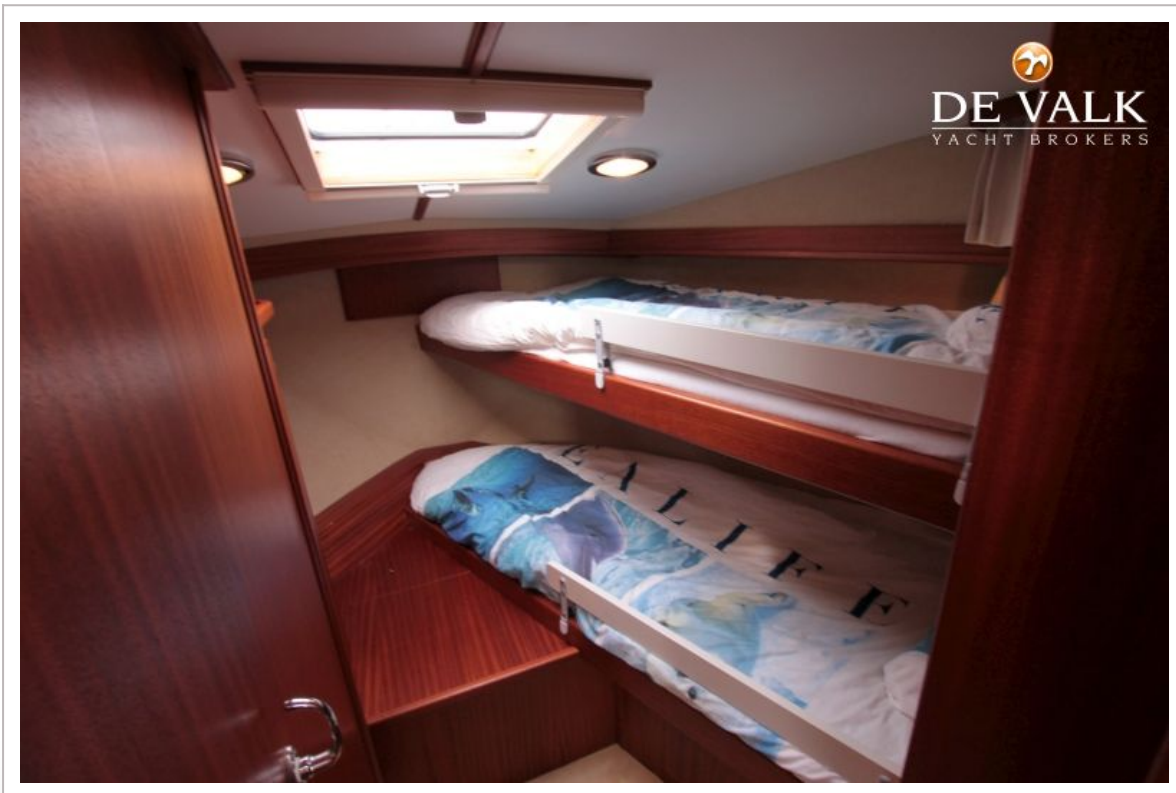
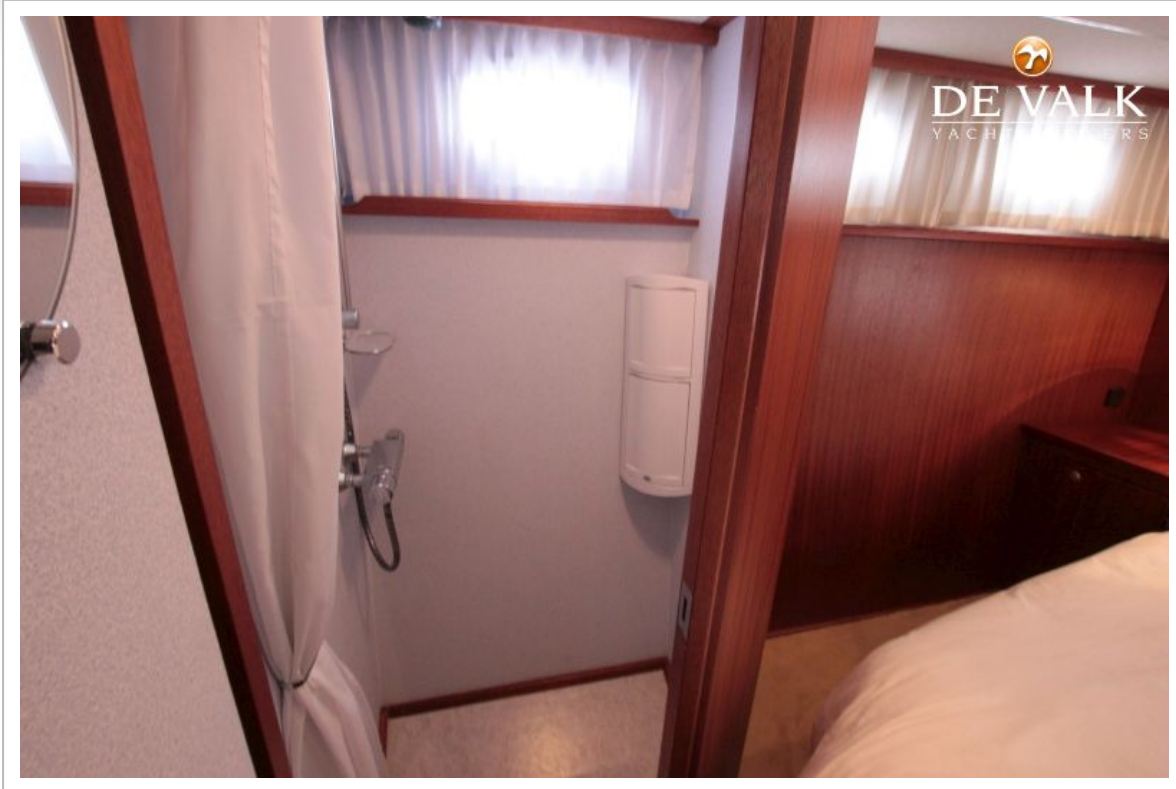
SUCCES 108 ULTRA



SUCCES 108 ULTRA



SUCCES 108 ULTRA



SUCCES 108 ULTRA

