



PRINCESS 45 FLY

PRINCESS 45 FLY

BROKER'S COMMENTS

Attractive motoryacht. Well maintained and well equipped. With a length of 13,57 m. this Princess 45 Fly is the popular one in the range of the fast family yachts. Tender and outboard not included.

Peter van Diggele

SPECIFICATIONS

Dimensions	13.57 x 4.30 x 1.10 (m)	Builder	Marine Projects - UK
Built	1989	Cabins	2
Material	GRP	Berths	4
Engine(s)	2 x Caterpillar 3208 diesel	Hp/Kw	2 x 375.00 (hp), 275.63 (kw)
Asking price	sold (VAT)	Lying	elsewhere / Not at sales office

CONTACT

Sales office	De Valk Loosdrecht B.V.	Telephone	+31 (0)35 582 90 30
Address	't Breukeleveense Meentje 6 1231LM Loosdrecht / Wijdmeren NL	E-mail	loosdrecht@devalk.nl

DISCLAIMER

These particulars are given in good faith as supplied but cannot be guaranteed.



PRINCESS 45 FLY

GENERAL

Model	PRINCESS 45 FLY
Type	motor yacht Motor yacht
LOA (m)	13,57
Beam (m)	4,30
Draft (m)	1,10
Headroom (m)	1,95
Year built	1989
Builder	Marine Projects - UK
Country	Great Britain
Designer	B. Olesinski
Displacement (t)	11
Hull material	GRP
Hull colour	white
Hull shape	deep-V
Superstructure material	GRP
Rubbing strake	rubber
Deck material	GRP
Deck finish	teak-imitation
Superstructure deck finish	teak-imitation
Cockpit deck finish	teak-imitation
Dorades	yes
Window frame	stainless steel
Window material	toughened glass
Portholes	stainless steel
Flybridge	yes
Radar arch	yes
Fuel tank (litre)	1568
Level indicator (fuel tank)	yes
Freshwater tank (litre)	805
Level indicator (freshwater)	yes



PRINCESS 45 FLY

Wheel steering	hydraulic
Inside helm position	yes
Flybridge helm position	hydraulic

ACCOMMODATION

Cabins	2
Berths	4
Interior	yes
Floor	carpet
Saloon	yes
Headroom saloon (m)	1,95
Heating	diesel ducted hot air
Dinette to convert into berth	yes
Sliding door to cockpit	yes
Galley	yes
Sink	2x
Cooker	2x
Oven	Panasonic
Extractor	yes
Microwave	yes
Fridge	2x
Hot water system	220V + engine 80 L.
Water pressure system	electrical
Owners cabin	yes
Wardrobe	hanging and drawers
Bathroom	yes
Toilet	1x
Wash basin	yes
Shower	yes
Guest cabin 1	yes
Bathroom	yes



PRINCESS 45 FLY

Toilet	1x
Shower	yes

MACHINERY

No of engines	2
Make	Caterpillar
Type	3208
HP	375,00
kW	275,63
Fuel	diesel
Maximum speed (kn)	30
Cruising speed (kn)	18.00
Consumption (l/hr)	40.00
Engine hours	2300
Engine cooling system	freshwater heat exchanger
Drive	shaft
Gearbox	hydraulic ZF-Hurth RM 301
Bowthruster	electric Vetus 3 kW
Sternthruster	electric
Gearbox	hydraulic
Exhaust	watercooled
Propeller type	fixed
Propeller blades	3
Propeller shaft material	stainless steel
Electric bilge pump	yes
Electrical installation	12/24/230 Volt
Generator	10 kW G&M
Start battery	yes
Service battery	yes
Battery charger	Mastervolt 50A
Inverter	Mastervolt 1500W



PRINCESS 45 FLY

Shorepower	with cable
Trimtabs	yes

NAVIGATION

Compass	yes
Depth sounder	B&G + repeater
Log	B&G + repeater
Repeater	Atis plus
VHF	Simrad 8400
Radar	Furuno
GPS	Shipmate GPS8200
Plotter	Simrad C32
Navtex	Shipmate
Radio receiver	ICOM
Searchlight	yes

EQUIPMENT

Fixed windscreen	yes
Bimini	yes
Bathing platform	yes
Deck shower	yes
Anchor	yes
Anchor chain	30 m.
Windlass	electrical Lewmar
Deck wash	yes
Davits	stainless steel Simpson
Sea railing	stainless steel
Wiper	yes
Window ventilator	yes
Horn	yes
TV	Bang & Olufsen



PRINCESS 45 FLY

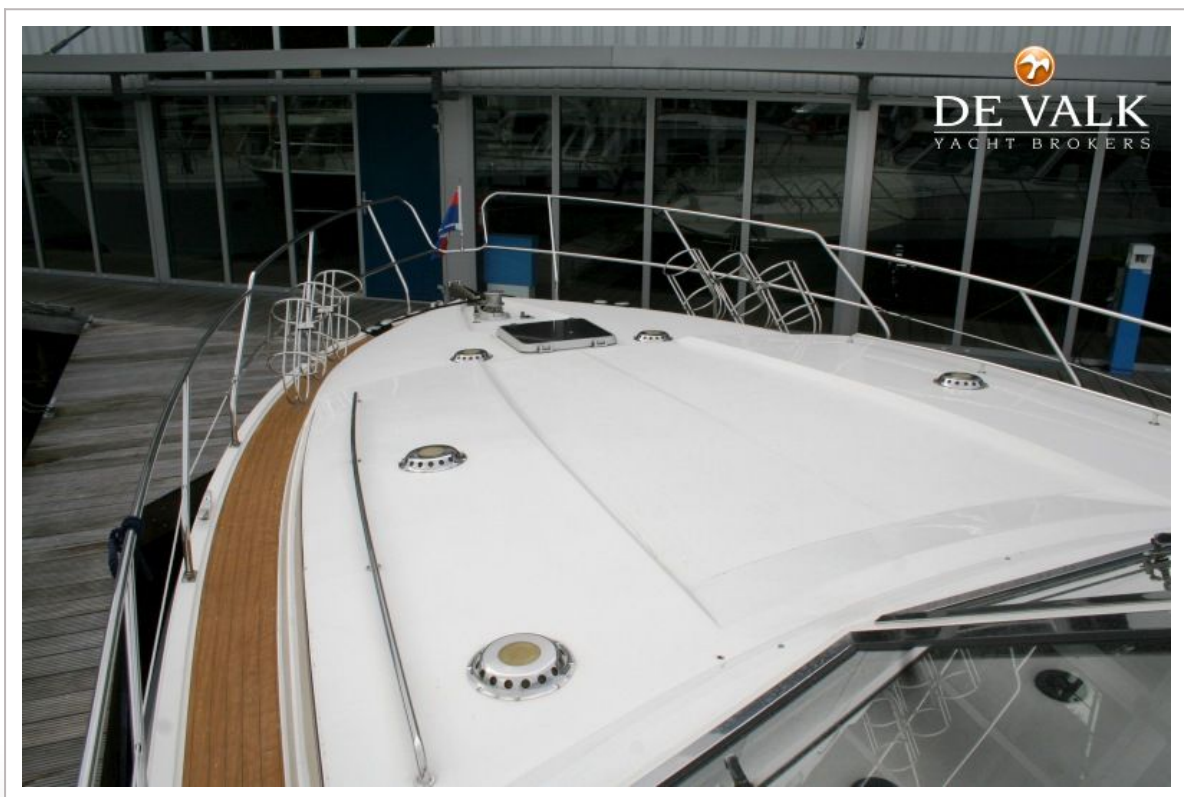
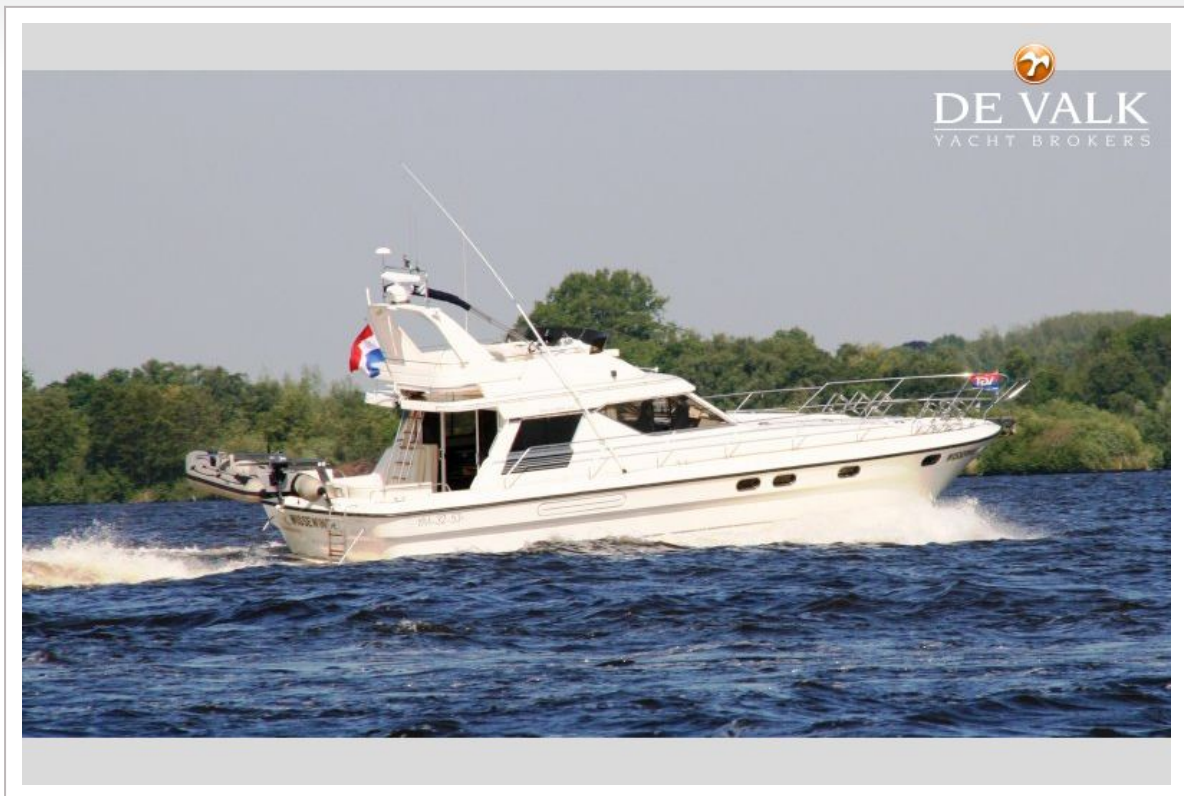
Radio-cd player	yes
DVD player	yes
Speakers in salon	yes
Clock - barometer	yes



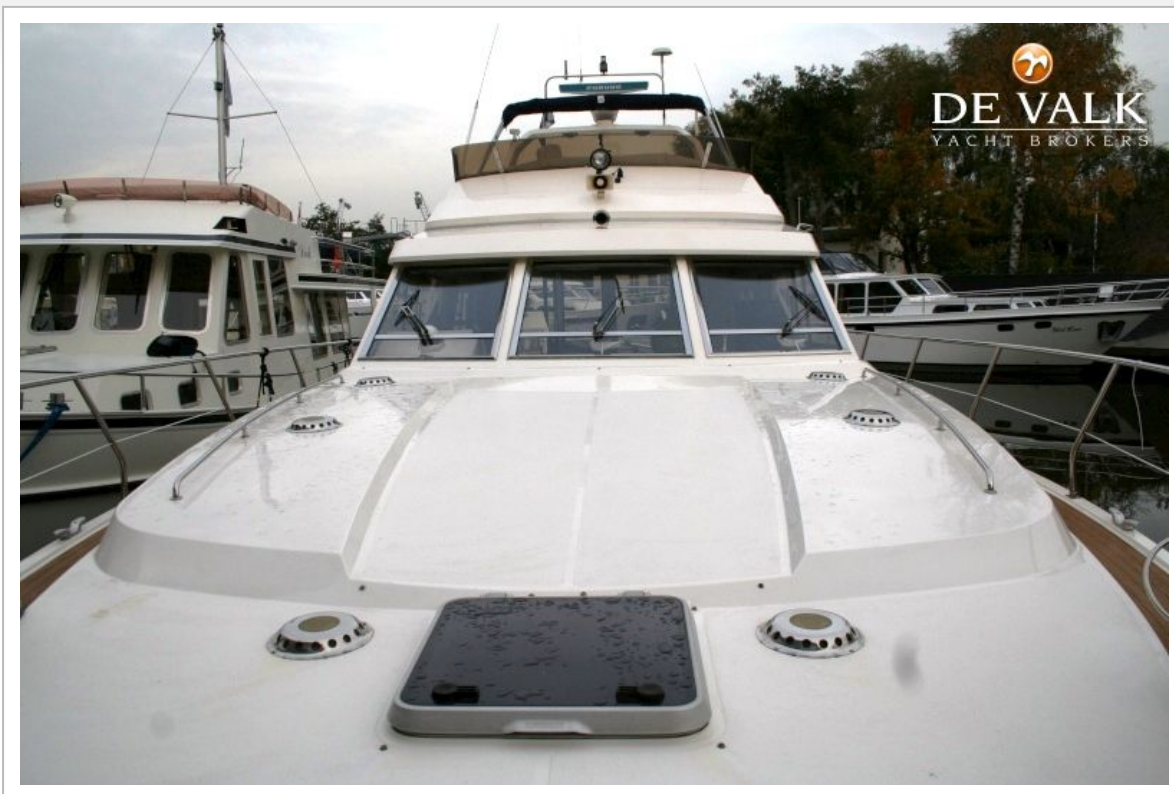
PRINCESS 45 FLY



PRINCESS 45 FLY



PRINCESS 45 FLY



PRINCESS 45 FLY



PRINCESS 45 FLY



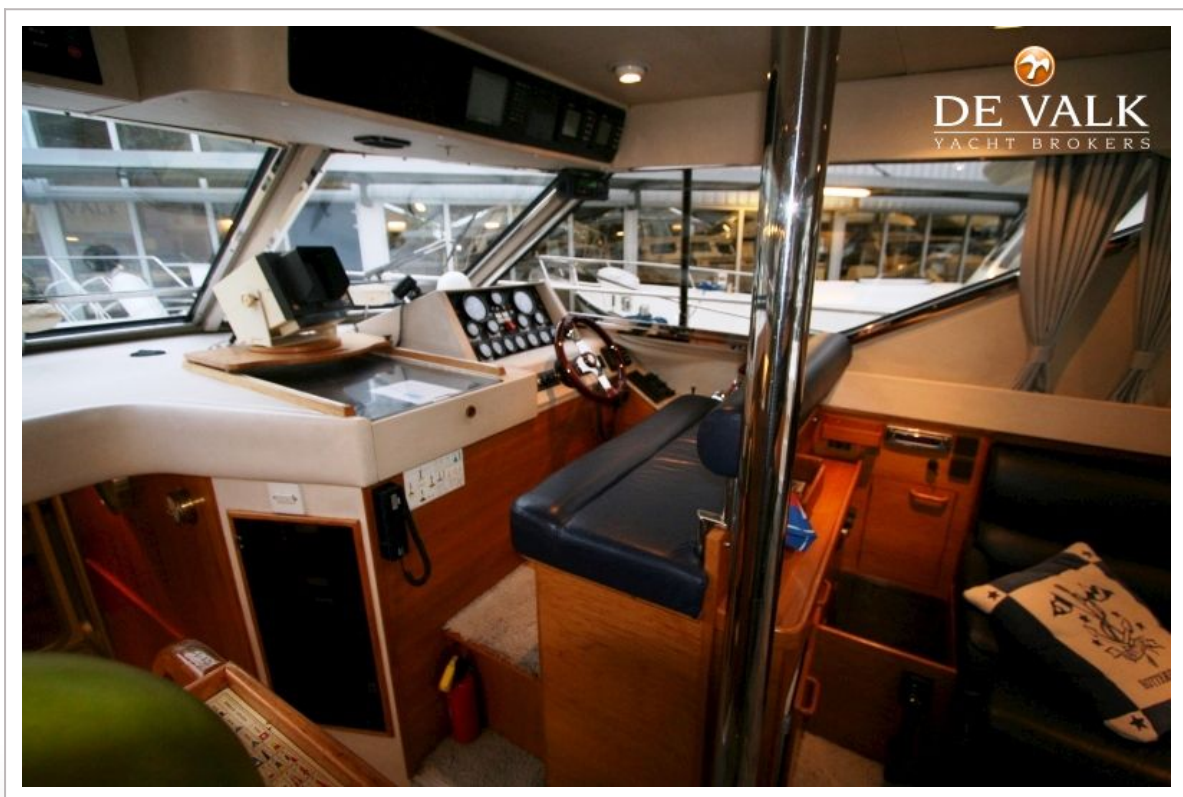
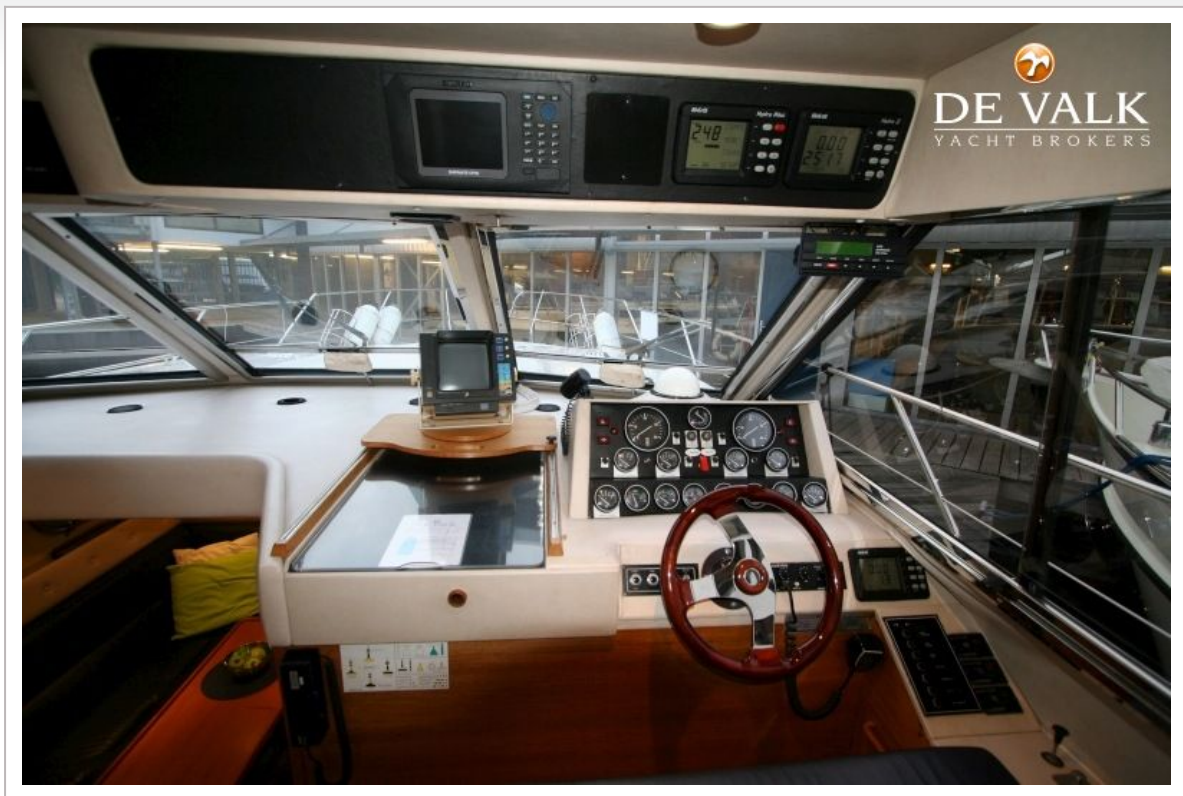
PRINCESS 45 FLY



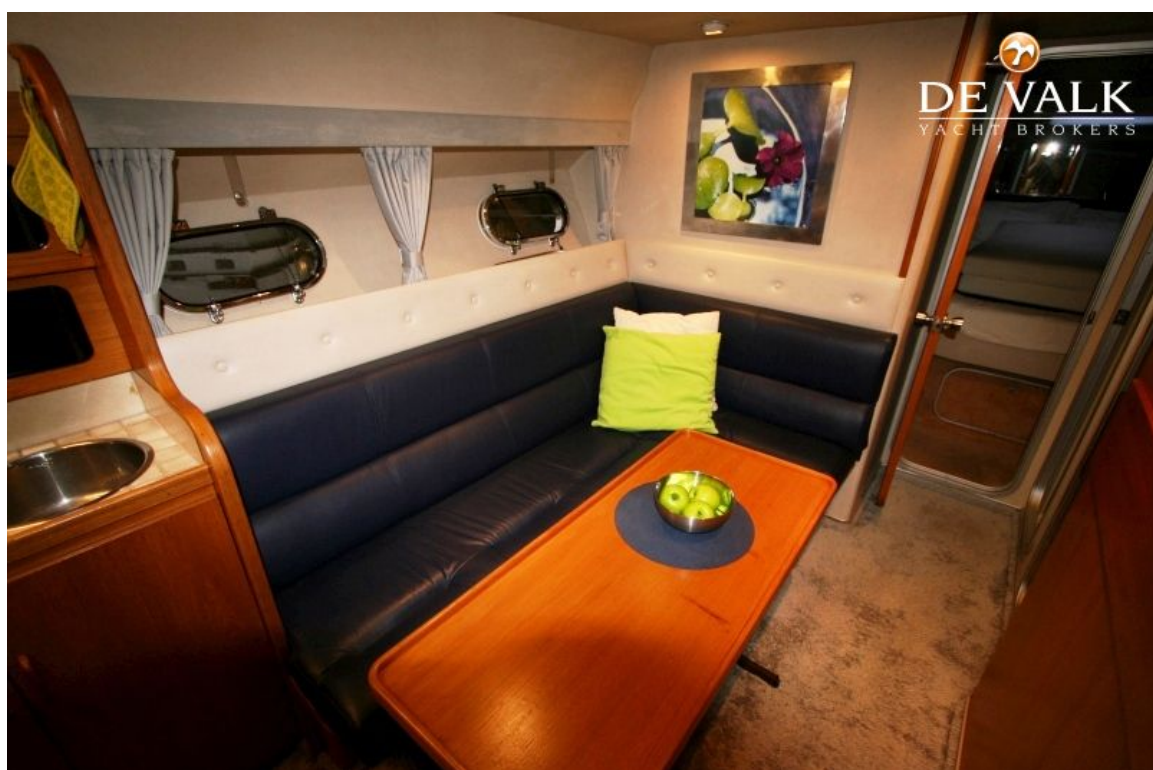
PRINCESS 45 FLY



PRINCESS 45 FLY



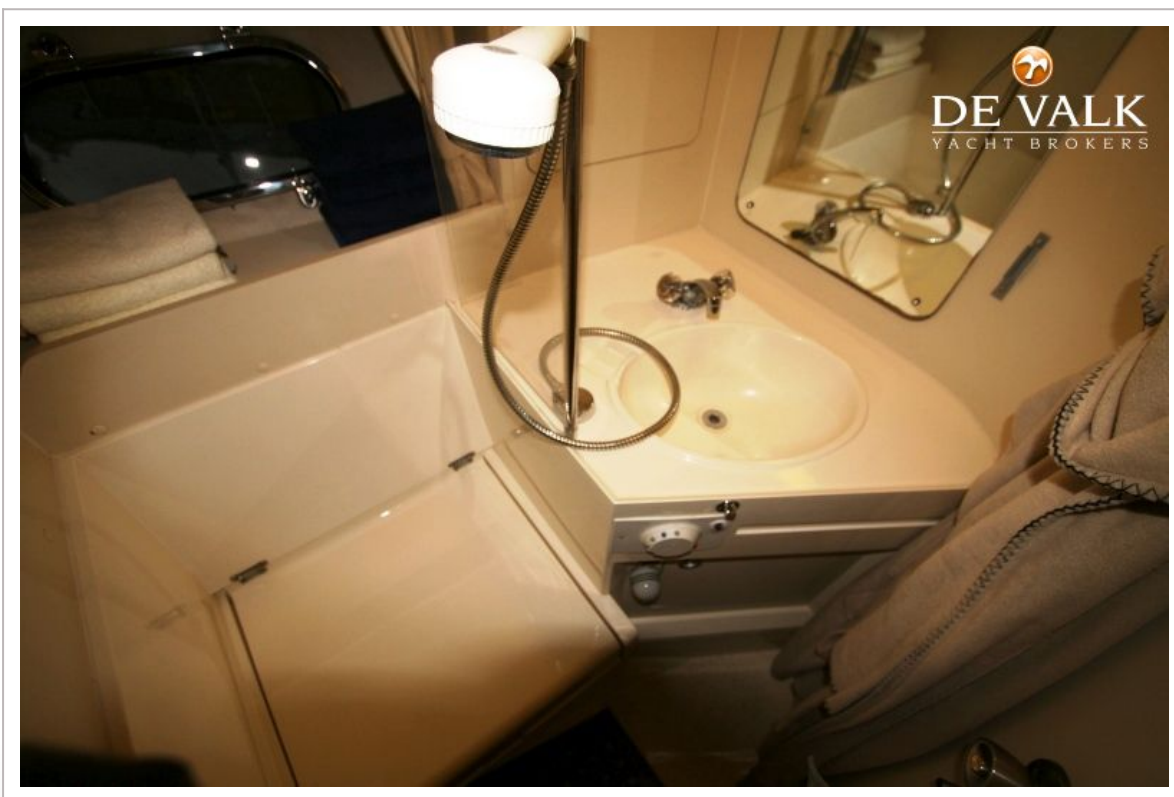
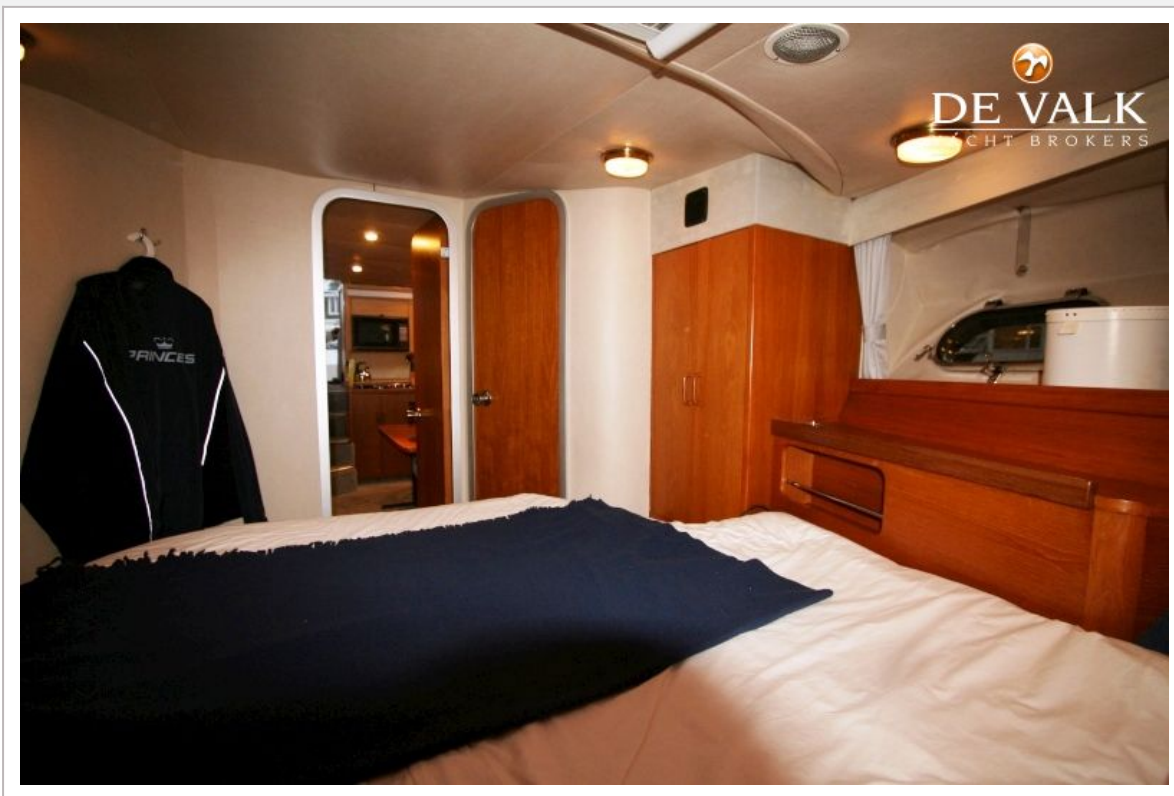
PRINCESS 45 FLY



PRINCESS 45 FLY



PRINCESS 45 FLY



PRINCESS 45 FLY

