



GRAND BANKS 36 CL

GRAND BANKS 36 CL

BROKER'S COMMENTS

Beautiful Grand Banks 36 Classic, maintained by her proud owner and ready to go. Popular motoryacht, well known on the Dutch waterways and abroad.

Peter van Diggele

SPECIFICATIONS

Dimensions	11.23 x 3.86 x 1.22 (m)	Builder	American Marine Ltd.
Built	1994	Cabins	2
Material	GRP	Berths	5
Engine(s)	2 x Ford Lehman 135 L diesel	Hp/Kw	2 x 135.00 (hp), 99.22 (kw)
Asking price	sold (VAT)	Lying	at sales office

CONTACT

Sales office	De Valk Loosdrecht B.V.	Telephone	+31 (0)35 582 90 30
Address	't Breukeleveense Meentje 6 1231LM Loosdrecht / Wijdmeren NL	E-mail	loosdrecht@devalk.nl

DISCLAIMER

These particulars are given in good faith as supplied but cannot be guaranteed.



GENERAL

Model	GRAND BANKS 36 CL
Type	motor yacht
LOA (m)	11,23
Beam (m)	3,86
Draft (m)	1,22
Air draft (m)	3,99
Headroom (m)	1,95
Year built	1994
Builder	American Marine Ltd.
Country	Singapore
Designer	Ken smith
Displacement (t)	12
Hull material	GRP
Hull colour	white
Hull shape	deep-V
Superstructure material	GRP
Rubbing strake	stainless steel
Deck material	GRP
Deck finish	teak
Window frame	wood
Flybridge	yes
Flybridge cover	yes
Flybridge cockpit cover	yes
Flybridge suncover	yes
Mast can be lowered	manual
Steadying sail with mast	yes
Fuel tank (litre)	steel 1514
Level indicator (fuel tank)	yes
Freshwater tank (litre)	580
Level indicator (freshwater)	yes



Blackwater tank (litre)	80
Greywater tank (litre)	yes
Wheel steering	hydraulic
Inside helm position	yes
Flybridge helm position	hydraulic

ACCOMMODATION

Cabins	2
Berths	5
Interior	teak
Floor	parquett
Headroom saloon (m)	1,95
Heating	diesel ducted hot air
Aft Cabin	yes
Galley	yes
Countertop	yes
Sink	stainless steel
Cooker	calor gas Princess
Oven	Princess
Extractor	yes
Fridge	with freezer compartment Engel, 85 L.
Hot water system	220V + engine
Water pressure system	electrical
Owners cabin	double bed + single bed
Wardrobe	yes
Bathroom	en suite
Toilet	shared
Toilet system	manual
Wash basin	in the bathroom
Shower	shared
Guest cabin 1	v-bed



Wardrobe	yes
Bathroom	en suite
Toilet	shared
Toilet system	manual
Wash basin	in the bathroom
Shower	shared
Washing machine	yes
Dryer	yes
Extra info	fridge at Fly Coolmatic

MACHINERY

No of engines	2
Make	Ford Lehman
Type	135 L
HP	135,00
kW	99,22
Fuel	diesel
Year installed	1994
Maximum speed (kn)	11
Cruising speed (kn)	9
Consumption (l/hr)	15
Engine hours	2100
Engine cooling system	freshwater heat exchanger
Drive	shaft
Engine controls	mechanical
Gearbox	hydraulic Velvet
Exhaust	watercooled
Propeller type	fixed
Propeller shaft material	stainless steel
Shaft lubrication	water
Electric bilge pump	yes



Electrical installation	12/220 Volt
Generator	wet exhaust Mase 3,5 kW
Batteries	yes
Battery charger	Mastervolt 40 amp.
Inverter	Victron 12/6000 watt
Shorepower	with cable

NAVIGATION

Compass	Magnetic
Compass on flybridge	Magnetic
Depth sounder	Autohelm Tridata
Log	Autohelm Tridata
Windset	Autohelm
VHF	Raymarine 240E
Autopilot	Autohelm ST 7000
Radar	Raymarine 4 kW HD
GPS	Raymarine C90 Widescreen
Plotter	Worldmap
Navtex	ICS
AIS receiver	Raymarine
Searchlight	yes
Extra info	Huger Weather station

EQUIPMENT

Fixed windscreen	yes
Cockpit cover	yes
Bimini	yes
Sun awning	yes
Bathing platform	yes
Boarding ladder	stainless steel
Deck shower	yes



GRAND BANKS 36 CL

Anchor	yes
Anchor chain	yes
Windlass	electrical Lofrans 1000Watt
Deck wash	yes
Sea railing	teak
Grab rail (superstructure)	teak
Wiper	3 x
Horn	
TV	Philips
TV receiver	Digitenne
Radio-cd player	Fusion MS-RA50
DVD player	Panasonic
iPod connection	yes
Clock - barometer	yes



GRAND BANKS 36 CL



GRAND BANKS 36 CL



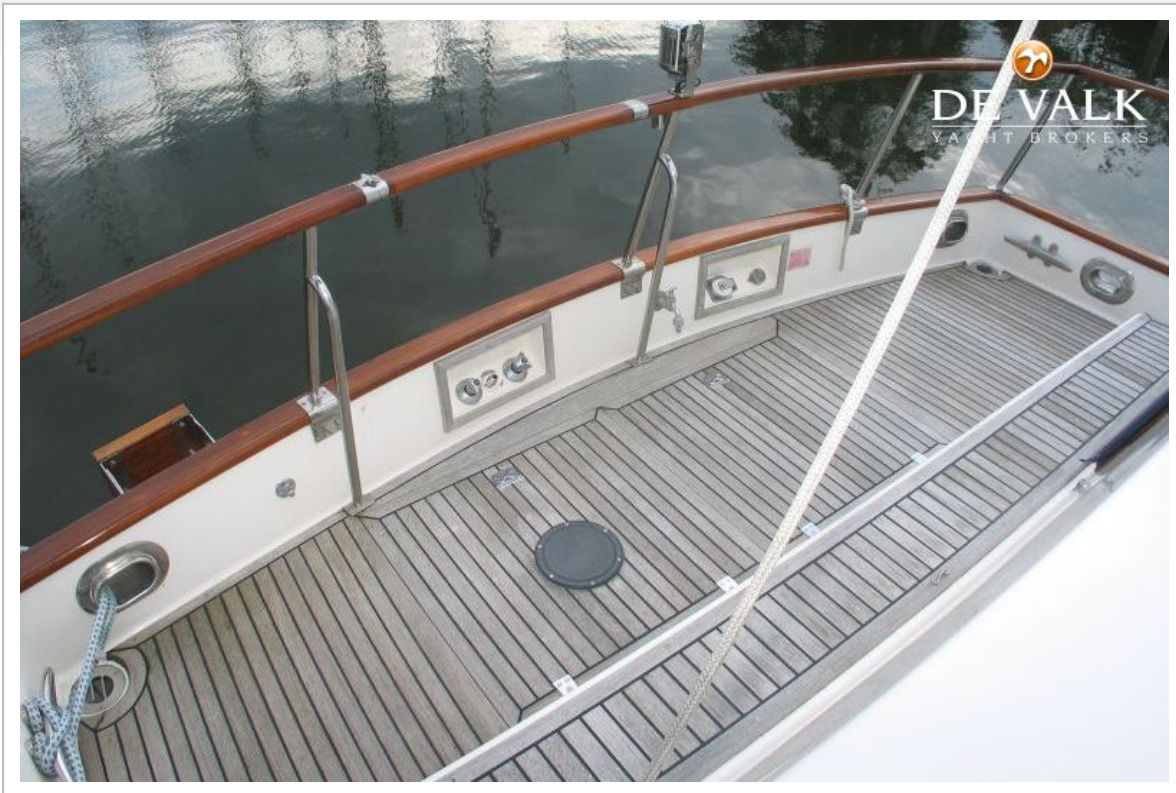
GRAND BANKS 36 CL



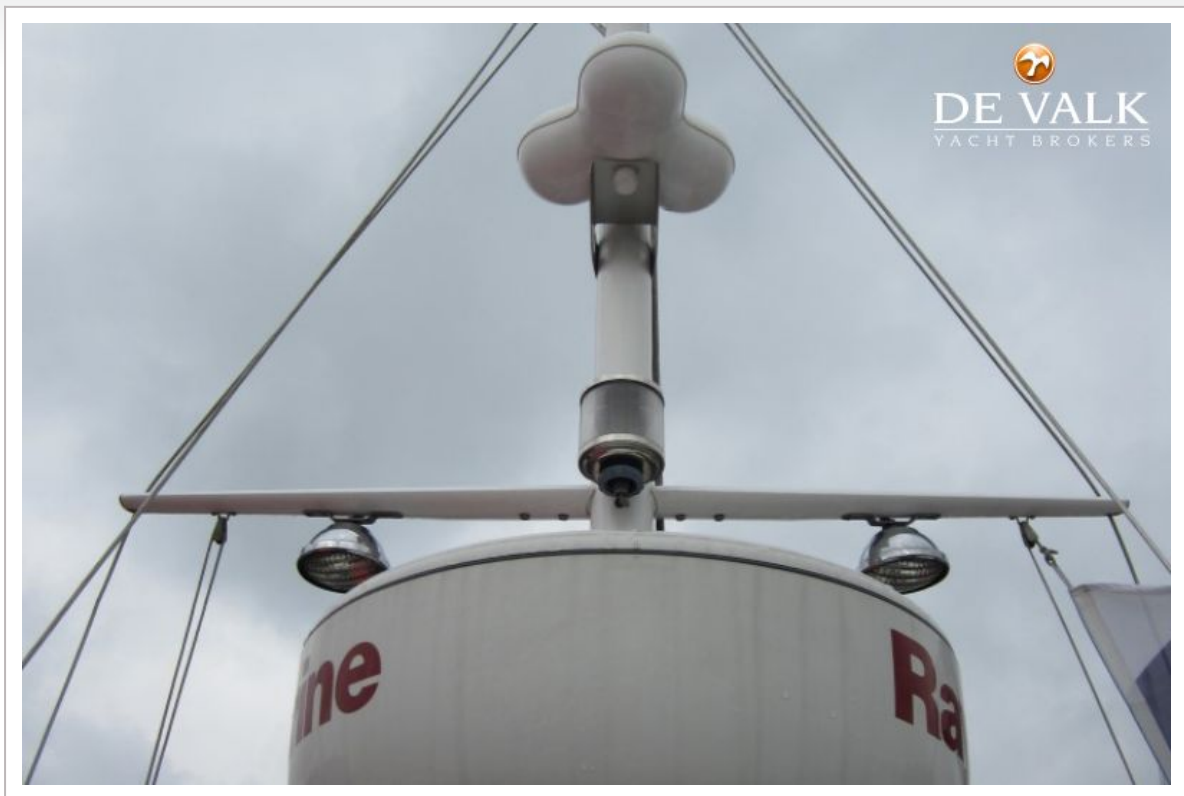
GRAND BANKS 36 CL



GRAND BANKS 36 CL



GRAND BANKS 36 CL



GRAND BANKS 36 CL



GRAND BANKS 36 CL



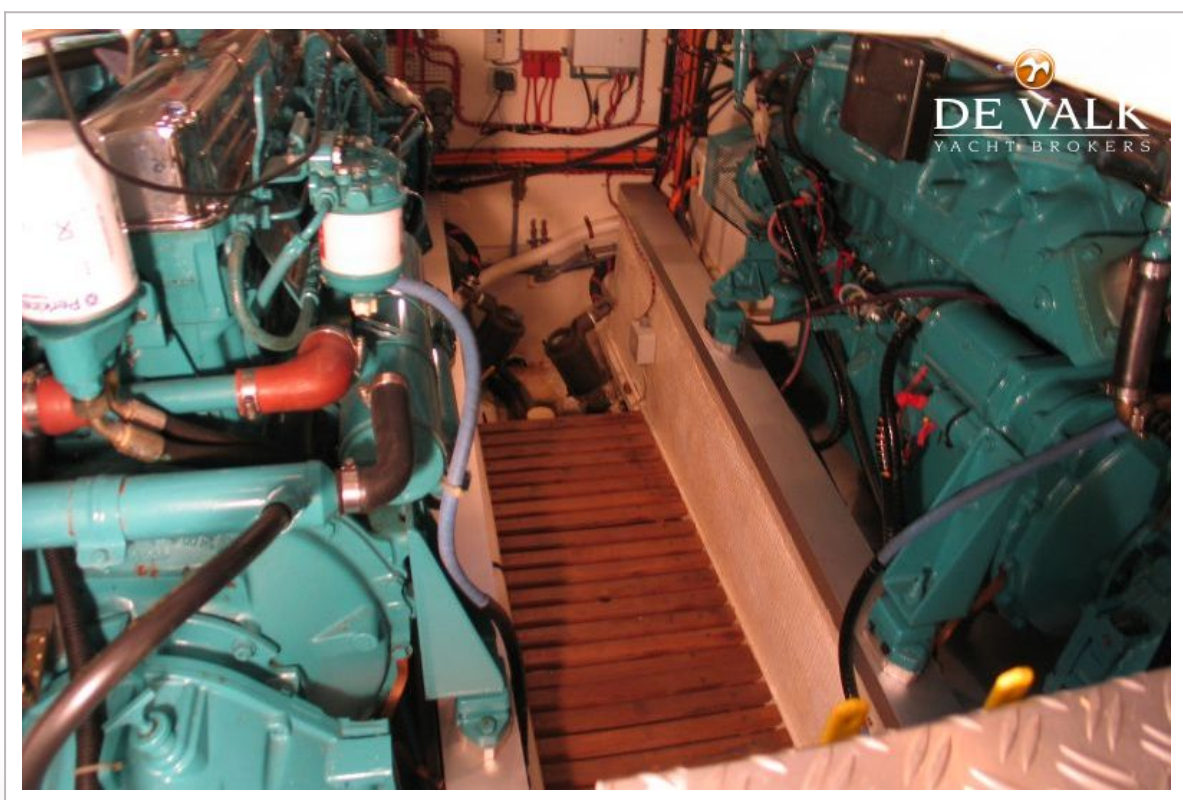
GRAND BANKS 36 CL



GRAND BANKS 36 CL



GRAND BANKS 36 CL



GRAND BANKS 36 CL

