



DE VALK
YACHT BROKERS



BAVARIA 33 CRUISER



DE VALK
YACHT BROKERS

BAVARIA 33 CRUISER

BROKER'S COMMENTS

Commissioned in 2006 and now offered with only 140 engine hours. The two-cabin layout makes her ideal for family cruising providing privacy and extra comfort. If you are looking for a 33 ft yacht, with for extensive cruising or for just sailing local waters, the Bavaria 33 Cruiser is well worth looking at.

Reinier van der Wolf

SPECIFICATIONS

Dimensions	10.65 x 3.48 x 1.50 (m)	Builder	Bavaria Yachtbau GmbH
Built	2005	Cabins	2
Material	GRP	Berths	4
Engine(s)	1 x Volvo Penta MD2030-BT diesel	Hp/Kw	29.00 (hp), 21.32 (kw)
Asking price	sold (VAT)	Lying	at sales office

CONTACT

Sales office	De Valk Monnickendam B.V.	Telephone	+31 (0)299 65 63 50
Address	Hoogedijk 6 1145 PM Katwoude NL	E-mail	monnickendam@devalk.nl

DISCLAIMER

These particulars are given in good faith as supplied but cannot be guaranteed.



BAVARIA 33 CRUISER

GENERAL

Model	BAVARIA 33 CRUISER
Type	sailing yacht
LOA (m)	10,65
LWL (m)	9,70
Beam (m)	3,48
Draft (m)	1,50
Air draft (m)	15,10
Headroom (m)	1,85
Year built	2005
Builder	Bavaria Yachtbau GmbH
Country	Germany
Designer	Bavaria
Displacement (t)	6,5
Ballast (tonnes)	1,4
CE norm	A
Hull material	GRP
Hull colour	white
Hull shape	roundbilged
Keel type	1,50 m.
Superstructure material	GRP
Rubbing strake	wood
Deck material	GRP
Deck finish	moulded in
Superstructure deck finish	moulded in
Cockpit deck finish	moulded in Teak on benches
Antifouling (year)	2012
Dorades	yes
Window frame	aluminum
Window material	perspex
Portholes	aluminum



BAVARIA 33 CRUISER

Fuel tank (litre)	polyethylene 150
Level indicator (fuel tank)	On steering consel Turotest
Freshwater tank (litre)	polyethylene 210
Level indicator (freshwater)	On dashboard charttable
Blackwater tank (litre)	polyethylene 40
Blackwater tank extraction	deck extraction
Wheel steering	mechanical
Emergency tiller	Stainless steel

ACCOMMODATION

Cabins	2
Berths	4
Interior	mahogany
Floor	teak and holly
Open cockpit	yes
Saloon	yes
Headroom saloon (m)	1,91
Heating	diesel ducted hot air Airtronic
Chart table	yes
Aft Cabin	yes
Galley	yes
Countertop	yes
Sink	stainless steel 1 x
Cooker	calor gas 2 pits Bavaria yachts
Oven	Bavaria Yachts
Fridge	Waeco
Hot water system	220V + engine QL boiler
Water pressure system	electrical Shurflo
Owners cabin	double bed
Bed length (m)	2.00 x 1.65
Wardrobe	hanging and drawers



BAVARIA 33 CRUISER

Bathroom	yes
Toilet	shared
Toilet system	manual Jabsco
Wash basin	in the bathroom
Shower	shared Hand
Guest cabin 1	v-bed
Bed length (m)	1.95 x 2.00
Wardrobe	hanging/drawers/shelves

MACHINERY

No of engines	1
Make	Volvo Penta
Type	MD2030-BT
HP	29,00
kW	21,32
Fuel	diesel
Year installed	2005
Maximum speed (kn)	7
Cruising speed (kn)	6,0
Consumption (l/hr)	3,0
Engine hours	140
Engine cooling system	freshwater heat exchanger
Drive	sail-drive
Engine controls	
Exhaust	watercooled
Propeller type	folding
Propeller blades	3
Manual bilge pump	Pump 1038
Electric bilge pump	Rule
Electrical installation	12 V DC, 220 V AC
Start battery	1 x Bosch Silver 55 Ah



BAVARIA 33 CRUISER

Service battery	2 x Bosch Heavy Duty 140 Ah
Battery charger	Quick SBC 251 12v/25 Ah
Shorepower	with cable

NAVIGATION

Compass	Plastimo Olympic 135
Depth sounder	Raymarine ST 60 Tridata
Log	Raymarine ST 60 Tridata
Windset	Raymarine ST 60 Wind
VHF	Icom M401E
Autopilot	Raymarine ST 4000 +
GPS	Navman Tracker 5500
Plotter	Navman Tracker 5500
Electronic chart(s)	C-map NT + wide

EQUIPMENT

Sprayhood	yes
Cockpit table	yes
Bathing platform	yes
Boarding ladder	stainless steel
Deck shower	yes
Anchor	yes
Anchor chain	+ line
Sea railing	wire
Grab rail (superstructure)	stainless steel
Pushpit	Stainless steel
Pulpit	Stainless steel
Fenders	yes
Mooring lines	yes
Radio-cd player	Blaupunkt Malaga CD 35
Speakers in salon	2 x Blaupunkt



BAVARIA 33 CRUISER

Clock - barometer

Barigo

Fire extinguisher

2 x

Extra info

Steeringcover (blue)

RIGGING

Rigging

sloop

Brand mast

Seldén

Material mast

aluminum

Spreaders

yes

Mainsail

Elvstrom Cruising, 29,7 m.

Mainsail cover

Easy drop system

Genoa

Elvstrom Cruising, 27,6 m.

Genoa furler

Furlex 200S

Backstay adjuster

tackle

Boomvang

tackle Selden Rodkicker

Primary sheet winch

2 x Lewmar 30

Secondary sheet winch

2 x Lewmar 16

Spi-pole

aluminum Pfeiffer



BAVARIA 33 CRUISER



BAVARIA 33 CRUISER



BAVARIA 33 CRUISER



BAVARIA 33 CRUISER



BAVARIA 33 CRUISER



BAVARIA 33 CRUISER



BAVARIA 33 CRUISER



BAVARIA 33 CRUISER



BAVARIA 33 CRUISER



BAVARIA 33 CRUISER



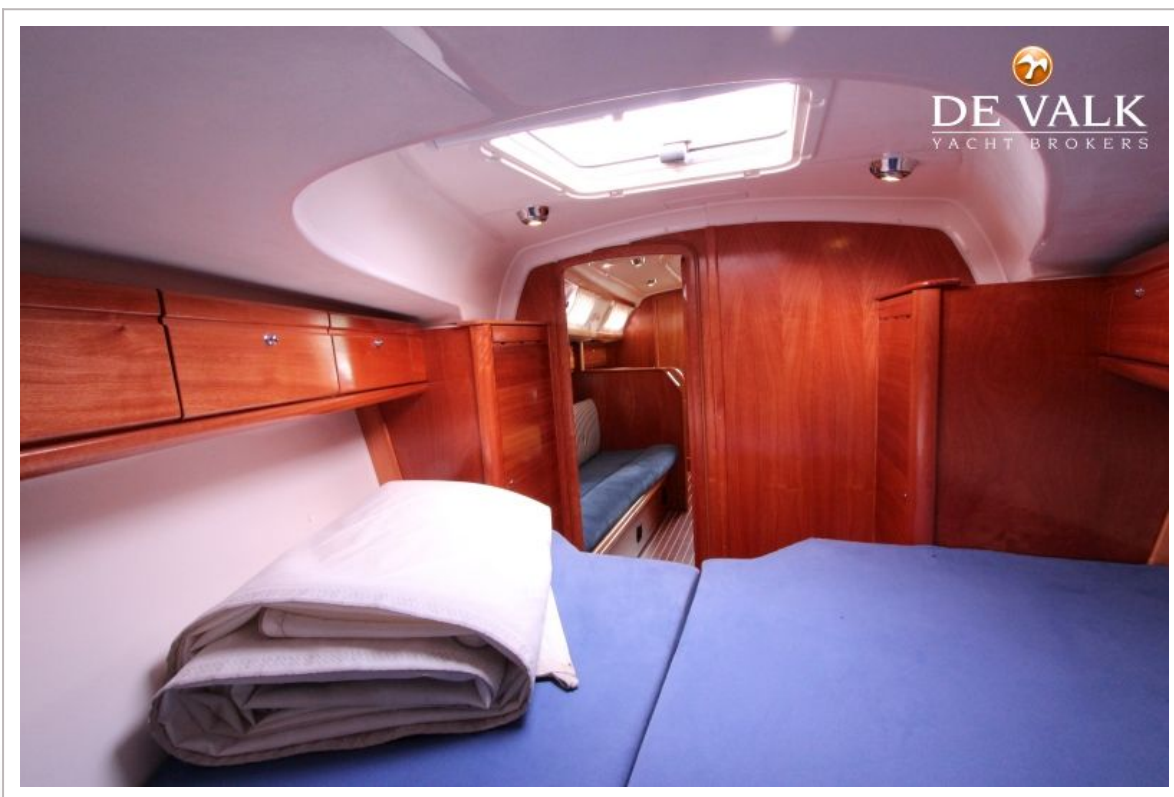
BAVARIA 33 CRUISER



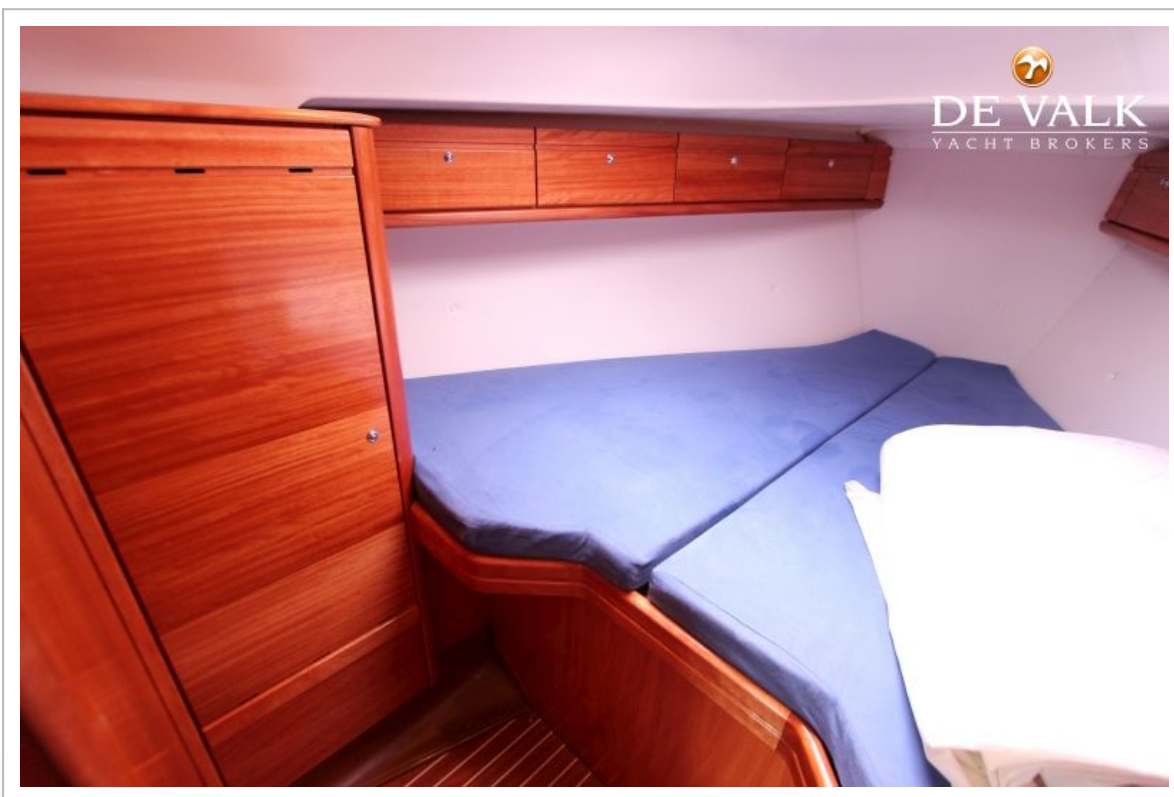
BAVARIA 33 CRUISER



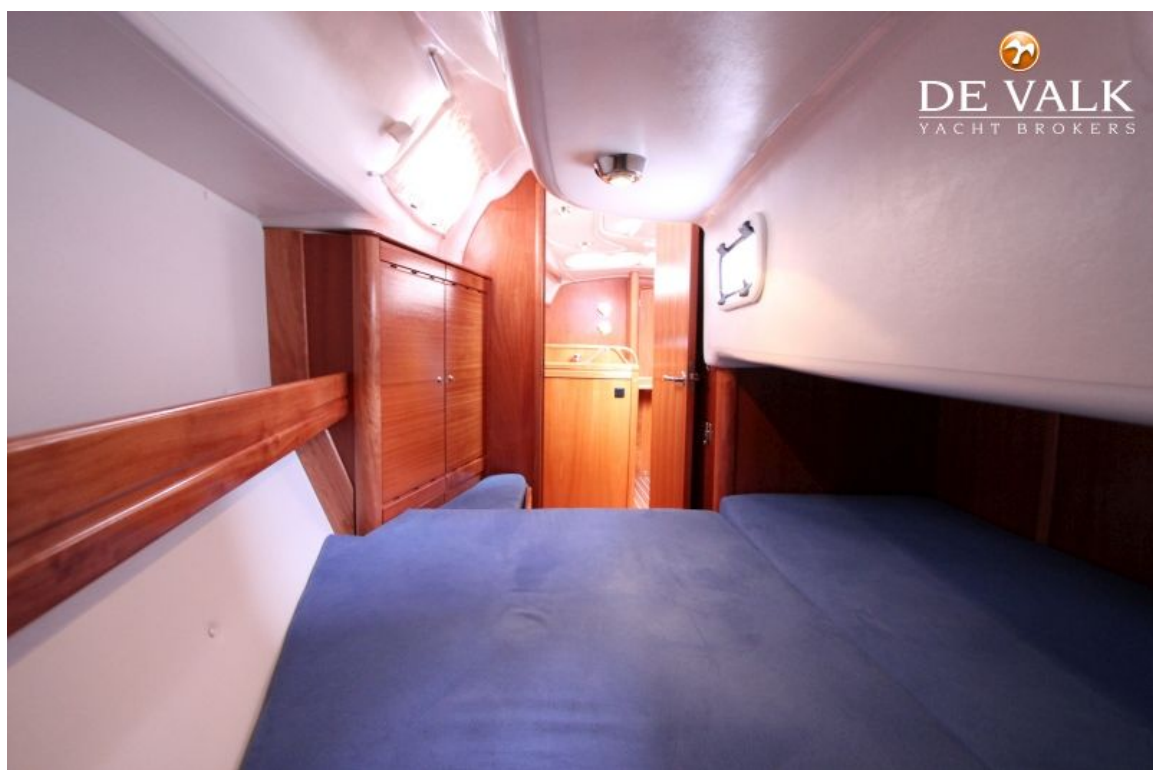
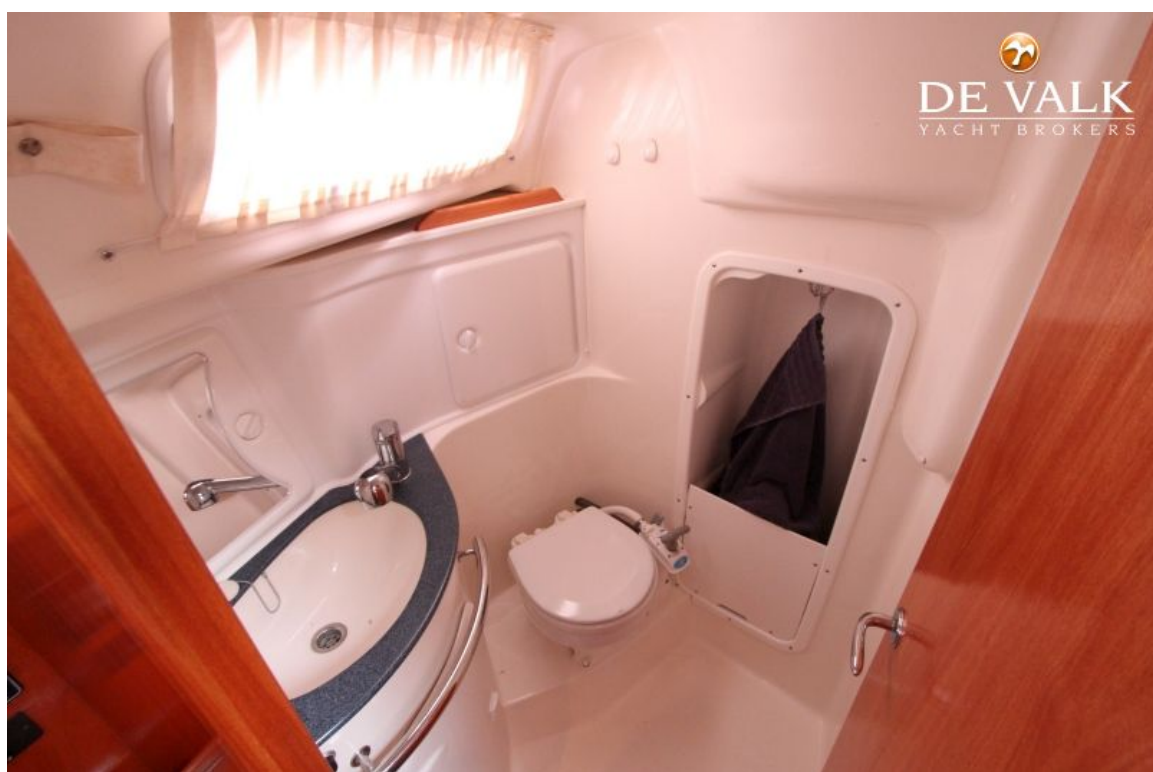
BAVARIA 33 CRUISER



BAVARIA 33 CRUISER



BAVARIA 33 CRUISER



BAVARIA 33 CRUISER



BAVARIA 33 CRUISER



BAVARIA 33 CRUISER

