



RAVENKOTTER 900

RAVENKOTTER 900

BROKER'S COMMENTS

The Raven Kotter 900 has been launched in 2013 and has been build by 'Van Vliet' in Vinkeveen, the Netherlands. Since the launch she only have sailed 20 hours and is very good condition, almost like new. The 900 can house up to 4 people and has everything you wish for onboard.

Arjen Hoeksma

SPECIFICATIONS

Dimensions	9.00 x 3.25 x 0.80 (m)	Builder	Jachtwerf Van Vliet - Vinkeveen
Built	2013	Cabins	1
Material	Steel	Berths	4
Engine(s)	1 x VETUS M4.55 diesel	Hp/Kw	42.04 (hp), 30.90 (kw)
Asking price	sold (VAT)	Lying	at sales office

CONTACT

Sales office	De Valk Loosdrecht B.V.	Telephone	+31 (0)35 582 90 30
Address	't Breukeleveense Meentje 6 1231LM Loosdrecht / Wijdmeren NL	E-mail	loosdrecht@devalk.nl

DISCLAIMER

These particulars are given in good faith as supplied but cannot be guaranteed.



GENERAL

Model	RAVENKOTTER 900
Type	motor yacht
LOA (m)	9,00
Beam (m)	3,25
Draft (m)	0,80
Air draft (m)	1,70
Headroom (m)	1,95
Year built	2013
Builder	Jachtwerf Van Vliet - Vinkeveen
Country	The Netherlands
CE norm	C C
Hull material	steel
Hull colour	grey
Hull shape	hard chine
Superstructure material	steel
Rubbing strake	fender rope
Deck material	steel
Deck finish	anti-slip paint
Cockpit deck finish	teak-imitation
Window frame	aluminum
Window material	tempered glass Gebo
Portholes	stainless steel
Fuel tank (litre)	yes
Level indicator (fuel tank)	yes
Freshwater tank (litre)	yes
Level indicator (freshwater)	yes
Blackwater tank (litre)	yes
Level indicator (blackwater)	yes
Wheel steering	hydraulic
More info on hull	New



More info on paintwork

New

ACCOMMODATION

Cabins	1
Berths	4
Interior	mahogany
Floor	parquett Oak
Open cockpit	yes
Heating	diesel ducted hot air
Dinette	yes
Dinette to convert into berth	yes
Countertop	corian
Sink	stainless steel
Cooker	ceramic Wallas 2-burner
Extractor	yes
Microwave	yes
Fridge	with freezer compartment Waeco
Hot water system	220V + engine
Water pressure system	electrical
Owners cabin	v-bed
Bathroom	en suite
Toilet	en suite
Toilet system	manual
Wash basin	at the toilet
Shower	en suite

MACHINERY

No of engines	1
Make	VETUS
Type	M4.55
HP	42,04



RAVENKOTTER 900

kW	30,90
Fuel	diesel
Year installed	2013
Maximum speed (kn)	8
Engine hours	7
Engine cooling system	freshwater heat exchanger
Drive	shaft
Engine controls	manual
Gearbox	hydraulic Twin Disc
Bowthruster	electric Vetus 3kW
Exhaust	watercooled
Propeller type	fixed
Electric bilge pump	yes
Electrical installation	12/220 Volt
Start battery	12V 60 Ah
Service battery	12V 120 Ah
Bowthruster battery	12V
Battery charger/inverter	Victron Phoenix 12V2500VA/120A
Shorepower	with cable

NAVIGATION

Depth sounder	Raymarine ST40
Log	Raymarine ST40
Rudder angle indicator	Wema

EQUIPMENT

Dodger	yes
Bimini	yes
Sun awning	yes
Bathing platform	yes
Boarding ladder	



RAVENKOTTER 900

Anchor	yes
Anchor chain	yes
Windlass	manual Lofrans
Sea railing	stainless steel
Wiper	3
Horn	electric
Fenders	yes
Radio-cd player	Kenwood + USB
Speakers in salon	yes
Fire extinguisher	yes
Extinguisher in engine room	yes
Auto extinguisher system	yes



RAVENKOTTER 900



RAVENKOTTER 900



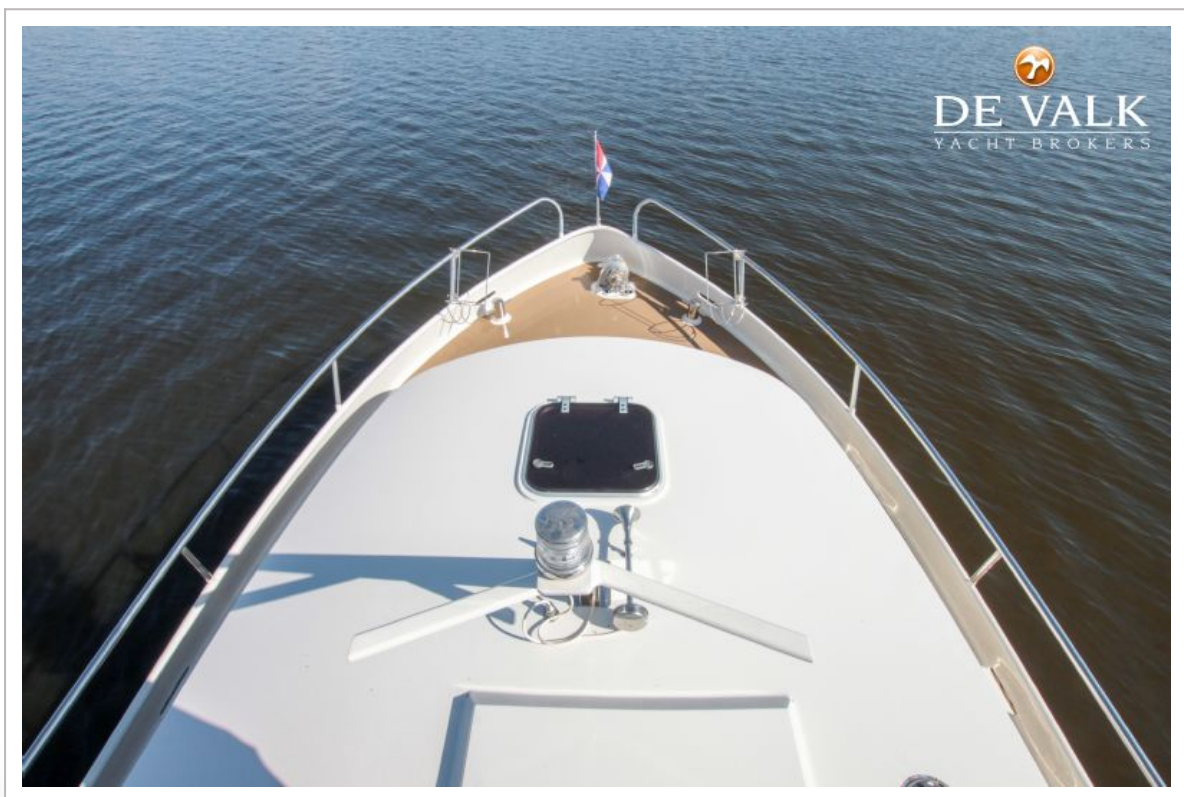
RAVENKOTTER 900



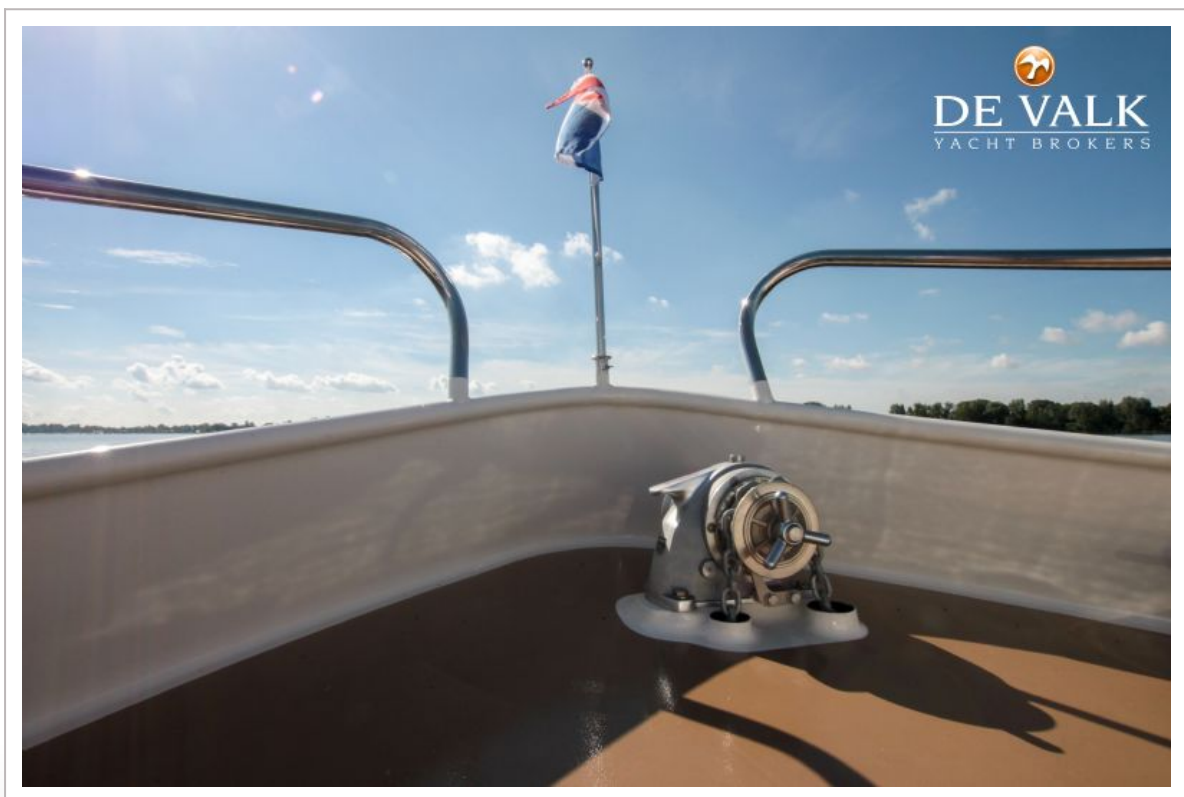
RAVENKOTTER 900



RAVENKOTTER 900



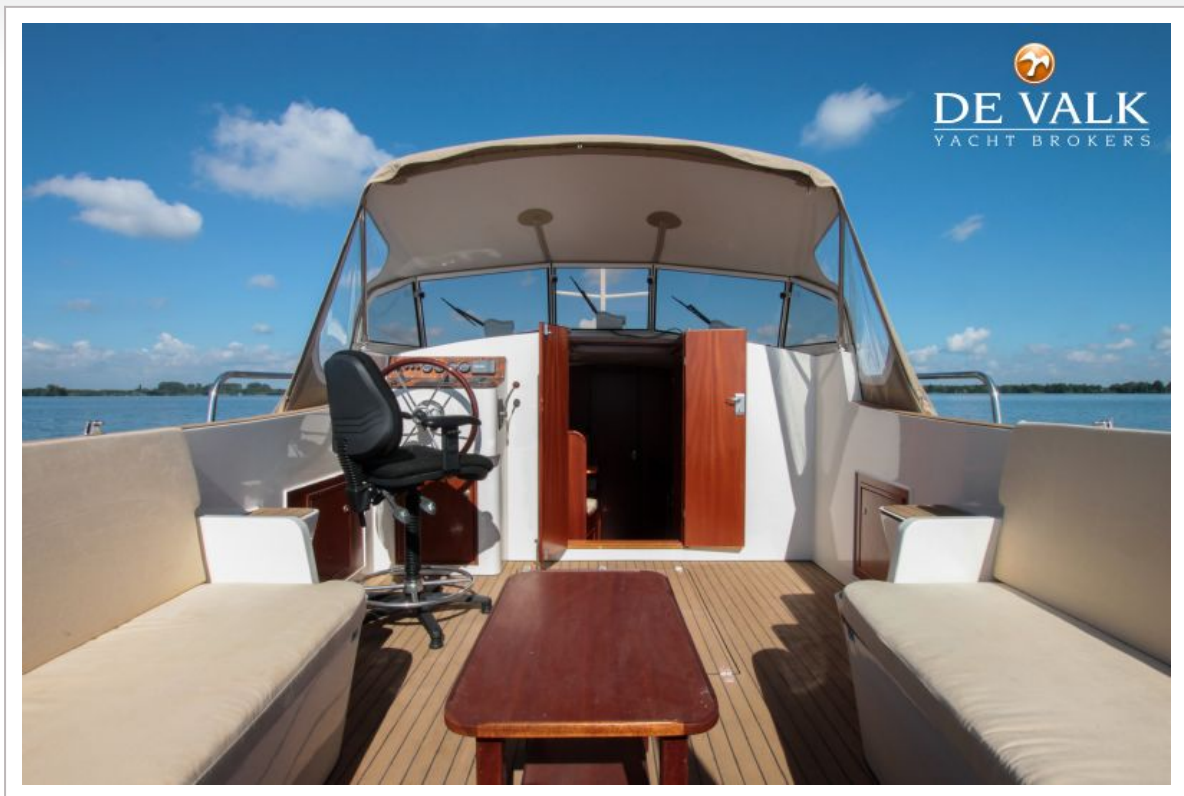
RAVENKOTTER 900



RAVENKOTTER 900



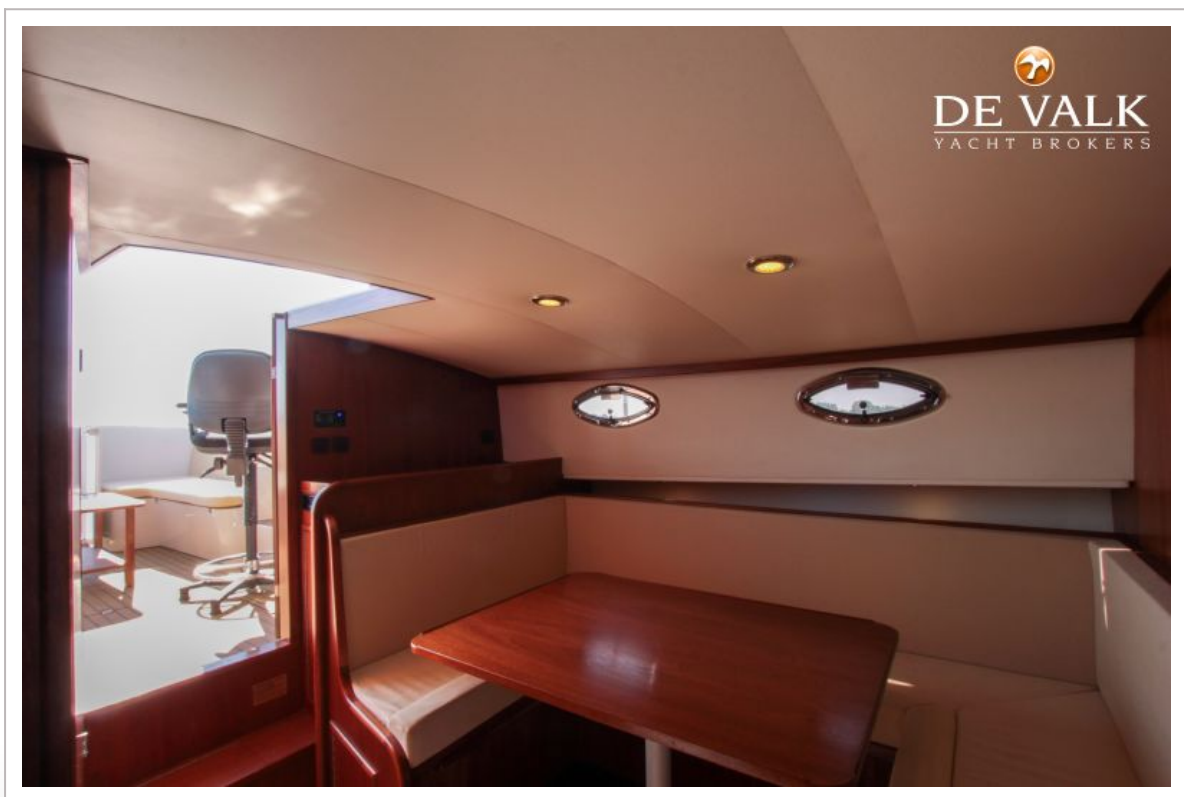
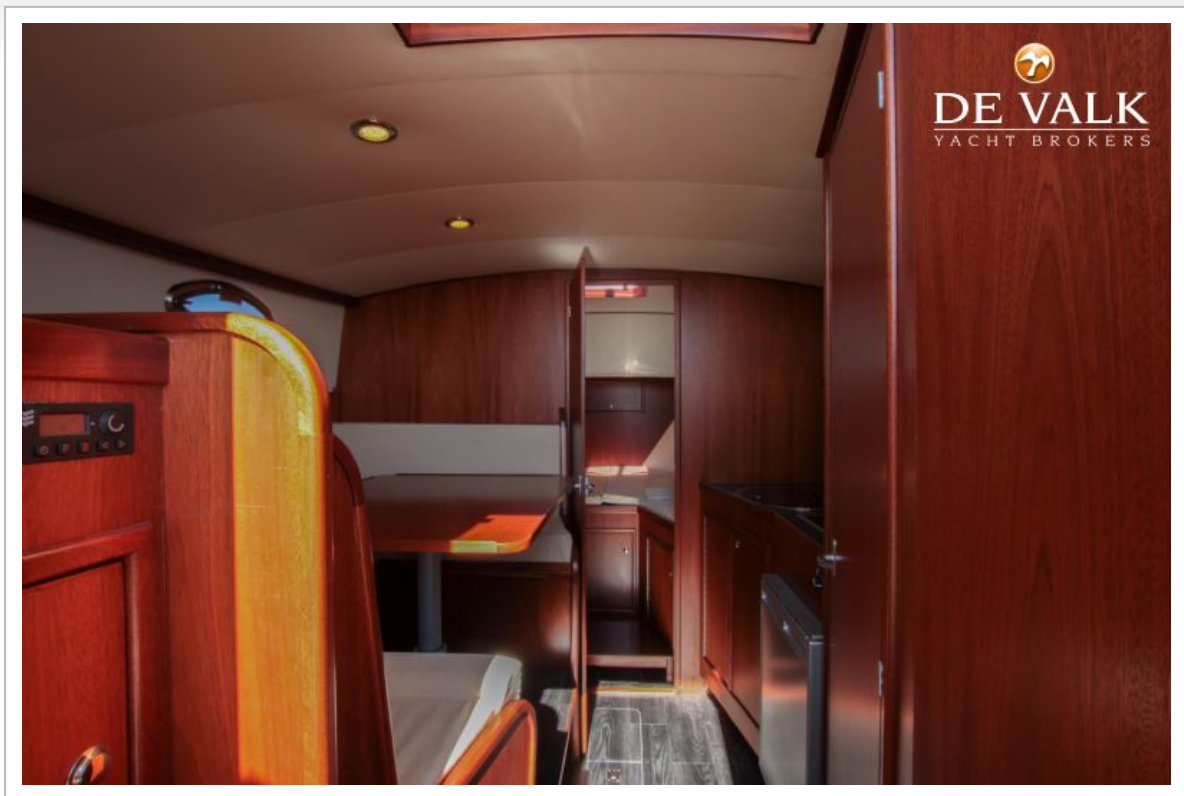
RAVENKOTTER 900



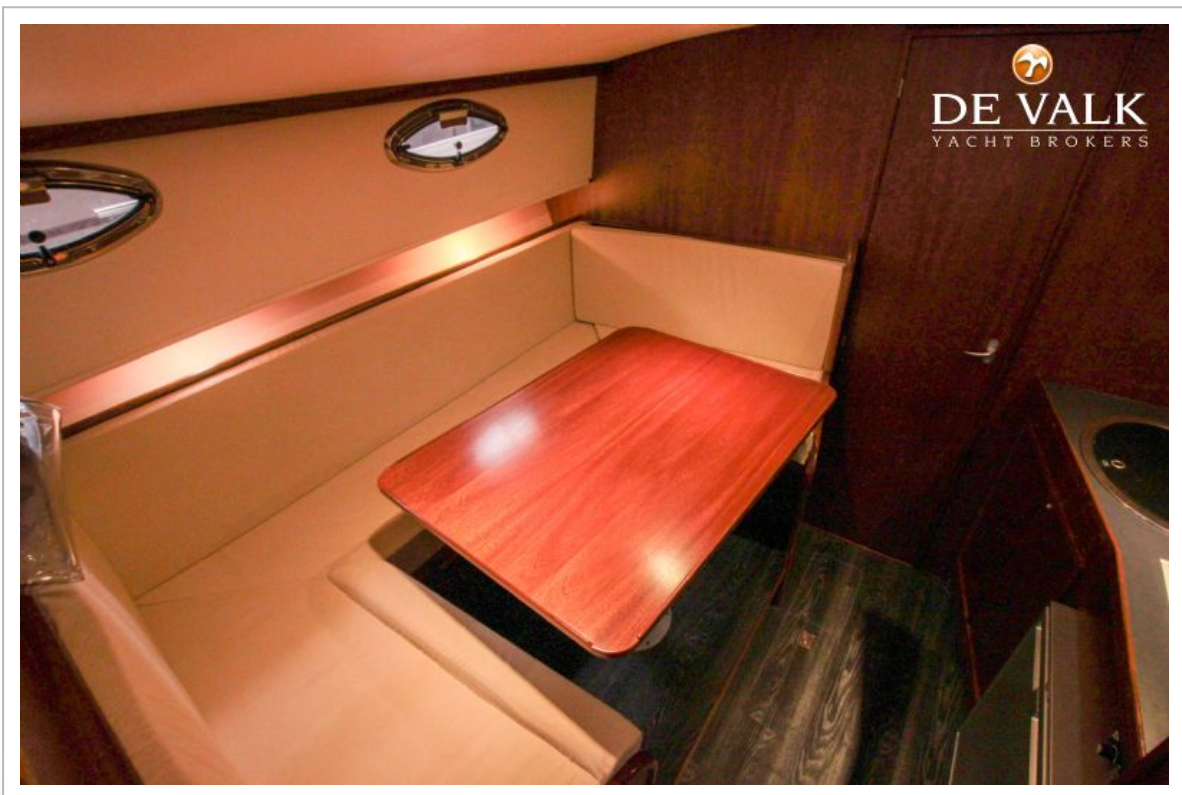
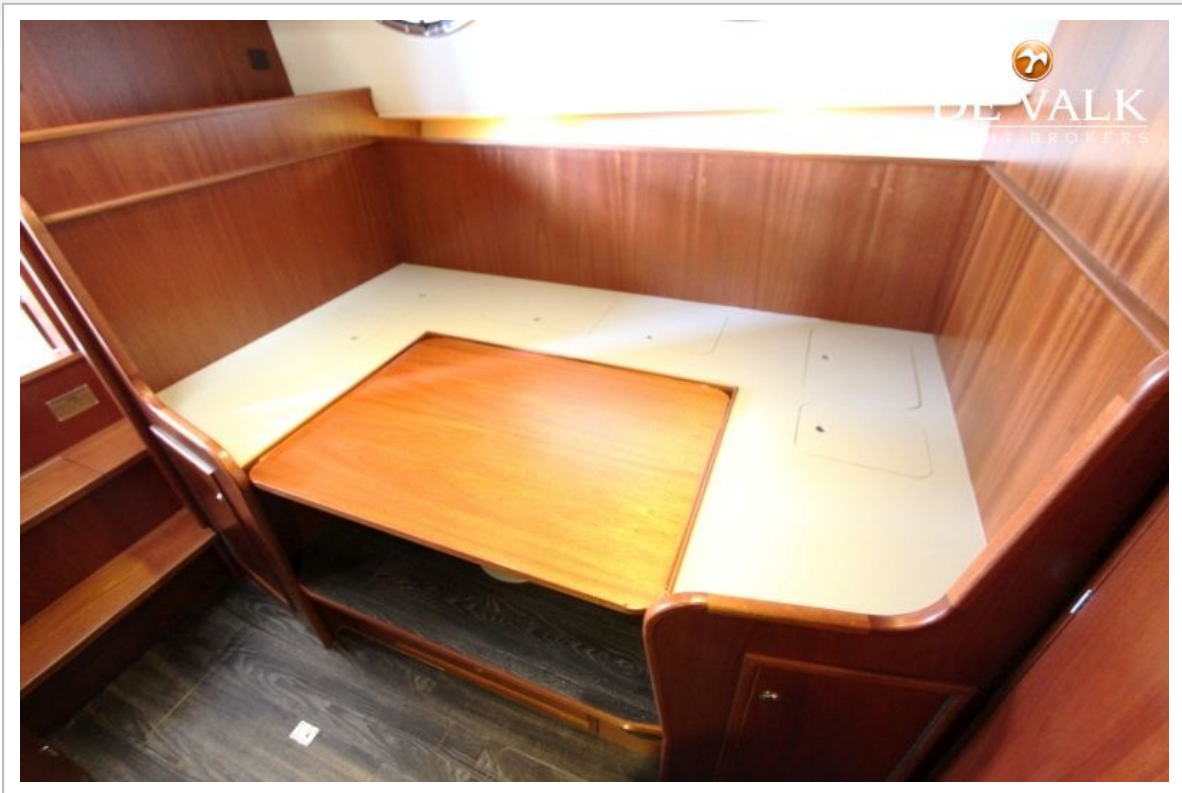
RAVENKOTTER 900



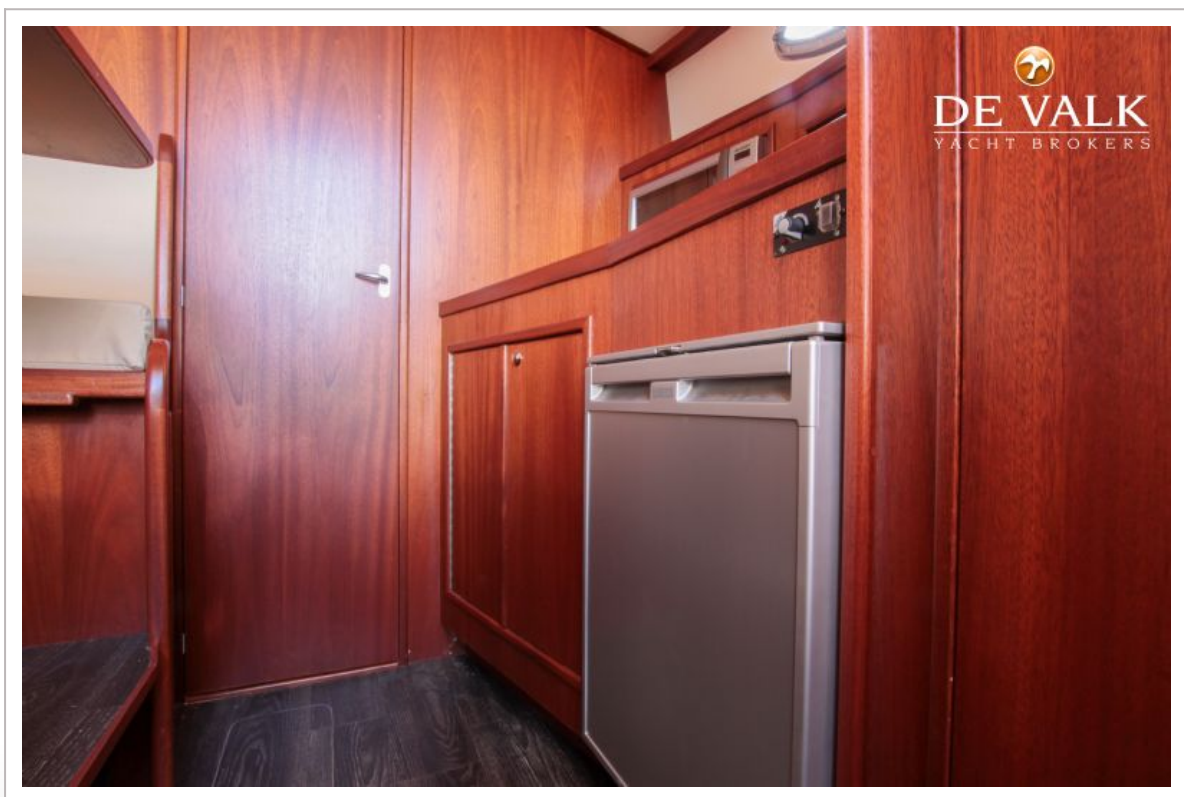
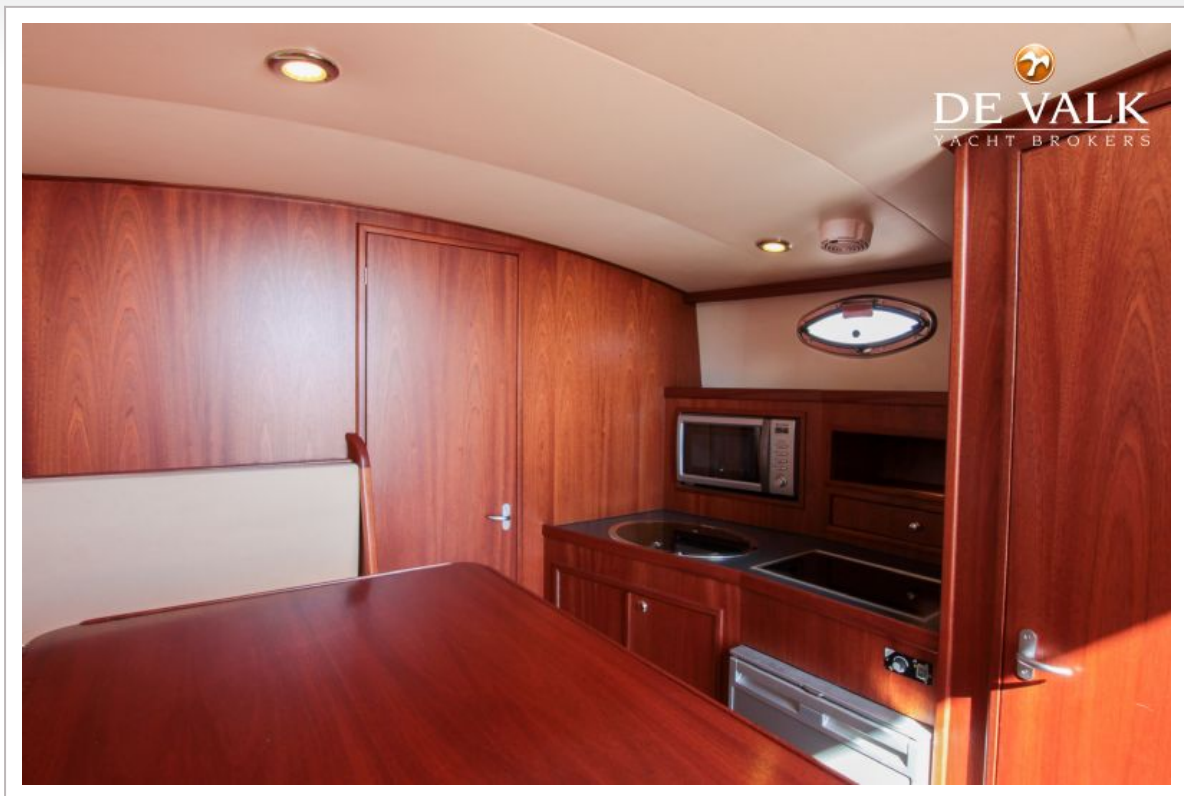
RAVENKOTTER 900



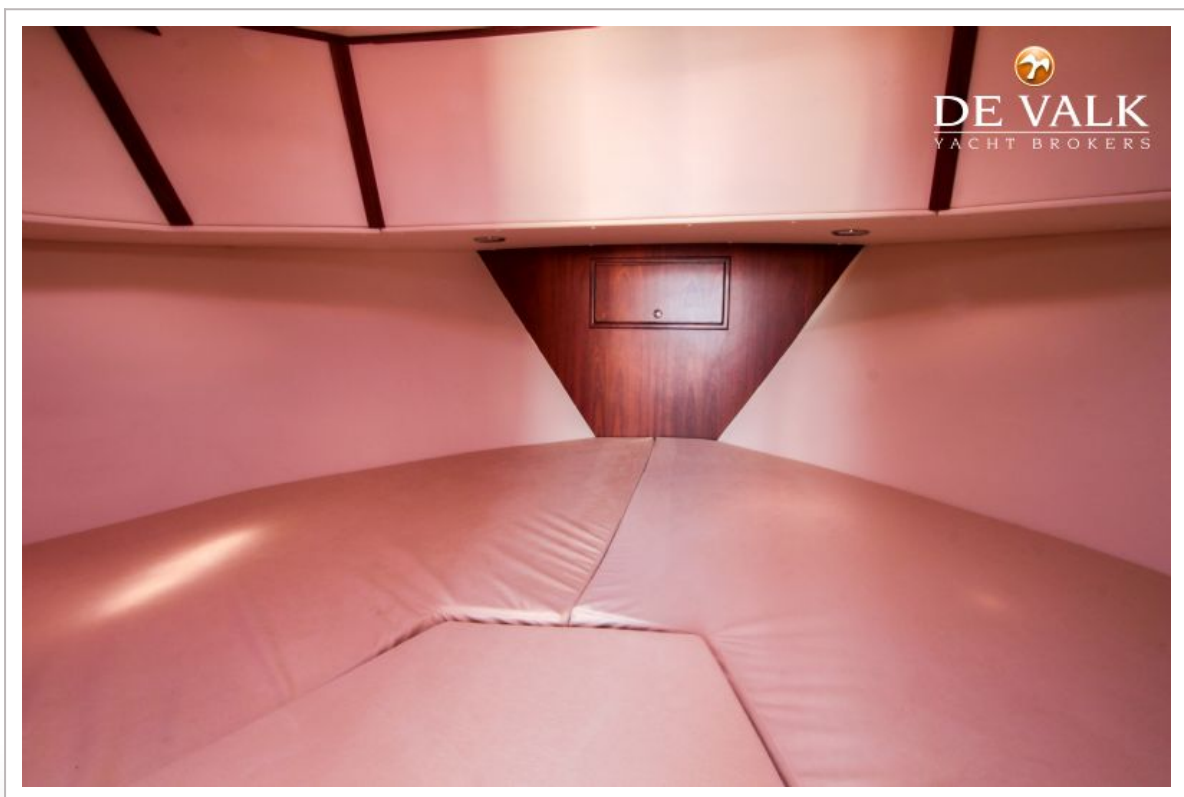
RAVENKOTTER 900



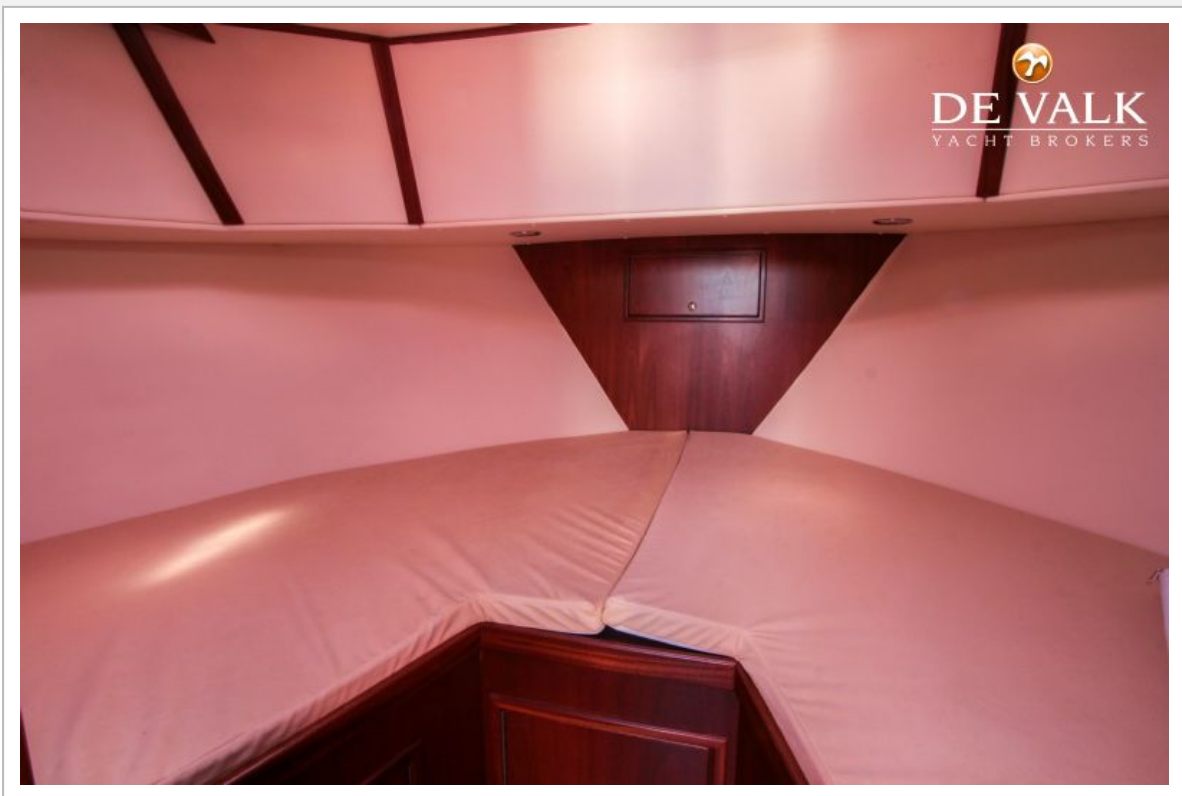
RAVENKOTTER 900

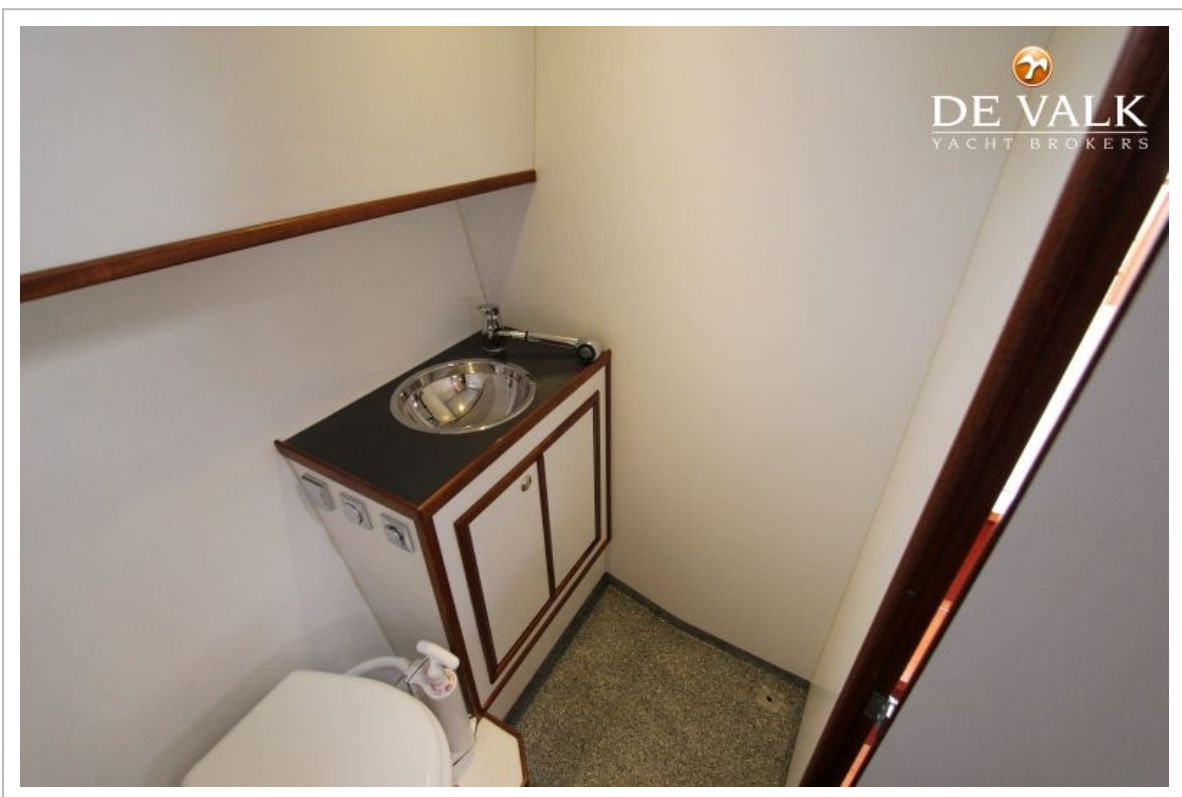
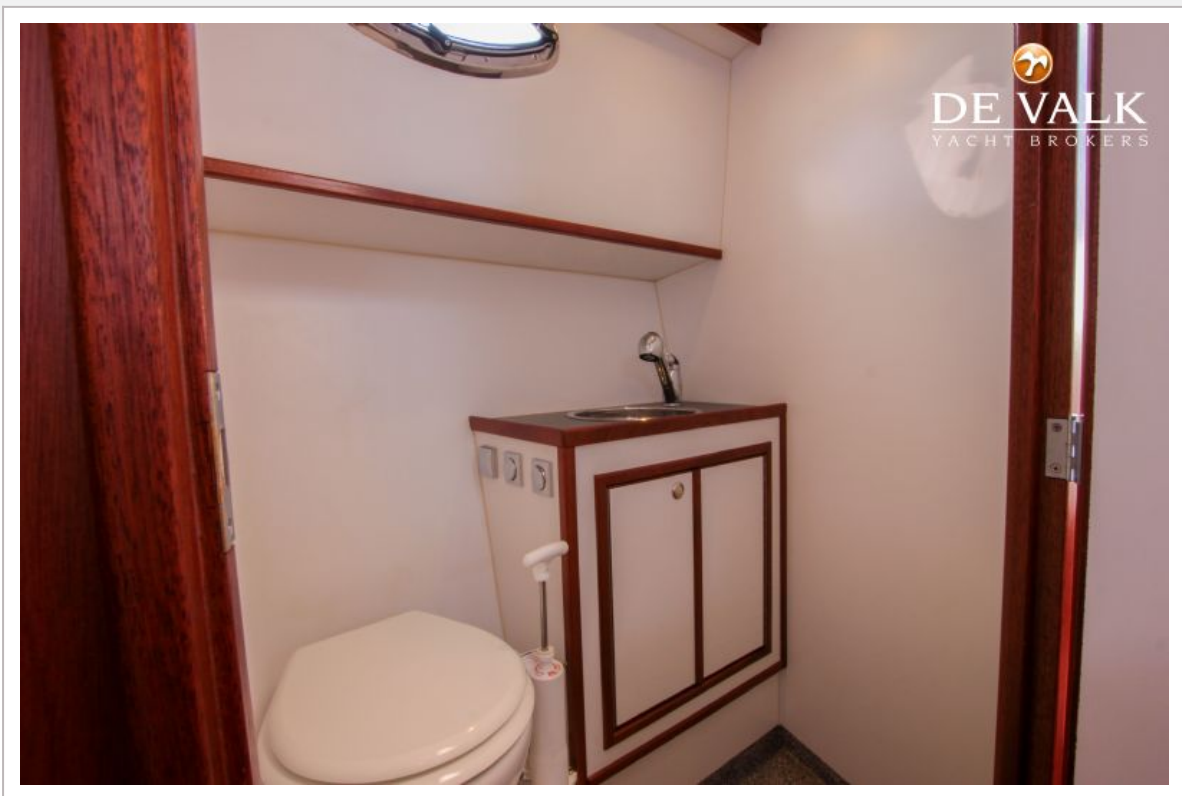


RAVENKOTTER 900



RAVENKOTTER 900





RAVENKOTTER 900

