



GRAND BANKS 58



GRAND BANKS 58

BROKER'S COMMENTS

Grand Banks 58 gentleman's yacht. Built in 1993 and equipped with all possible options. Spacious saloon and flybridge. This ship is the flagship of Grand Banks which was assigned to the "Happy Few". Only nine ships were built between 1991 and 1993. Experience the comfort and luxury of this ship!

Arjen Hoeksma

SPECIFICATIONS

Dimensions	17.86 x 5.33 x 1.68 (m)	Builder	American Marine Ltd
Built	1993	Cabins	5
Material	GRP	Berths	11
Engine(s)	2 x Caterpillar diesel	Hp/Kw	2 x 325.00 (hp), 238.88 (kw)
Asking price	sold (VAT)	Lying	at sales office

CONTACT

Sales office	De Valk Loosdrecht B.V.	Telephone	+31 (0)35 582 90 30
Address	't Breukeleveense Meentje 6 1231LM Loosdrecht / Wijdmeren NL	E-mail	loosdrecht@devalk.nl

DISCLAIMER

These particulars are given in good faith as supplied but cannot be guaranteed.



GENERAL

Model	GRAND BANKS 58
Type	motor yacht
LOA (m)	17,86
Beam (m)	5,33
Draft (m)	1,68
Air draft (m)	5,50
Headroom (m)	2,00
Year built	1993
Builder	American Marine Ltd
Country	Singapore
Displacement (t)	45
Hull material	GRP
Hull colour	off-white
Hull shape	deep-V
Superstructure material	GRP
Rubbing strake	stainless steel
Deck material	GRP
Deck finish	teak
Superstructure deck finish	teak
Cockpit deck finish	teak
Window frame	aluminum
Window material	tempered glass
Portholes	stainless steel
Insulation	yes
Flybridge	yes
Radar arch	collapsible
Mast can be lowered	manual
Fuel tank (litre)	aluminum 6150L with manhole
Level indicator (fuel tank)	yes
Fuel daytank (litre)	yes



Freshwater tank (litre)	stainless steel 1600L
Level indicator (freshwater)	yes
Blackwater tank (litre)	750L
Level indicator (blackwater)	yes
Blackwater tank extraction	deck extraction
Wheel steering	hydraulic
Inside helm position	yes
Outside helm position	yes
Flybridge helm position	hydraulic

ACCOMMODATION

Cabins	5
Berths	11
Crew cabin	1 cabin
Crew berths	2x2 bunkbeds
Interior	teak Classic
Floor	parquett
Pilot house	yes
Saloon	With open bar
Headroom saloon (m)	2
Heating	Marine Air Systems
Air-conditioning	Marine Air Systems
Chart table	yes
Aft Cabin	yes
Dinette	L-shaped leather upholstered
Galley	yes
Countertop	corian
Sink	stainless steel
Cooker	ceramic De Dietrich
Oven	Bauknecht
Fridge	4 fridges: trays and shelves



Freezer	Fridges can be used as freezer
Hot water system	220V + engine Boiler 100L
Water pressure system	electrical
Dishwasher	Bosch
Kettle	Kitchen Aid
Owners cabin	double bed
Wardrobe	hanging and drawers
Bathroom	en suite
Toilet	en suite
Toilet system	electric
Wash basin	in the bathroom
Shower	en suite
Guest cabin 1	double bed
Wardrobe	hanging and drawers
Toilet	shared
Toilet system	electric
Shower	shared
Guest cabin 2	double bed
Wardrobe	hanging and drawers
Guest cabin 3	double bed
Wardrobe	hanging and drawers
Toilet	en suite
Toilet system	electric
Wash basin	in the bathroom
Shower	en suite
Guest cabin 4	double bed
Wardrobe	hanging and drawers
Toilet	en suite
Toilet system	electric
Crew cabin(s)	1, with own toilet/shower accomodation
Washing machine	Zanussi
Dryer	Zanussi



MACHINERY

No of engines	2
Make	Caterpillar
HP	325,00
kW	238,88
Fuel	diesel
Maximum speed (kn)	13
Engine hours	3500
Drive	shaft
Engine controls	electrical Micro Commander
Gearbox	hydraulic Twin Disc
Bowthruster	yes
Sternthruster	yes
Exhaust	watercooled
Propeller shaft material	stainless steel
Electrical installation	12/24/230V
Generator	Onan 6,5 kW
Running hours generator	2422 hours
Generator 2	Onan 16 kW
Running hours generator 2	2434 hours
Start battery	yes
Service battery	yes
Battery charger	Victron Energy 24V/25A + 12V charger
Shorepower	with cable Stern and bowconnections
Stabilizers	Naiad hydraulic

NAVIGATION

Compass	Danforth
Depth sounder	Stowe Dataline
Log	Stowe Dataline
Windset	Stowe Dataline



Repeater	On flybridge
VHF	Sailor Compact VHF RT2048
Autopilot	Robertson Ap200 DL
Rudder angle indicator	VDO
Radar	Furuno
GPS	Geonav 11 color/Furuno GPS navigator GP70
Plotter	Lorenz MK-11 plus
Navtex	ICS Navtex plus
Searchlight	yes

EQUIPMENT

Bimini	yes
Cockpit cushions	yes
Bathing platform	yes
Boarding ladder	stainless steel
Transom door	yes
Gangway	Opacmare hydraulic max 200 kg
Deck shower	yes
Anchor	Bruce
Anchor chain	yes
Anchor 2	yes
Anchor chain	yes
Windlass	Lofrans 2000W/24V
Capstan	Lofrans
Deck wash	yes
Dinghy	Yamaha Waverunner Jet Ski
Deck crane	hydraulic
Sea railing	stainless steel
Railing side opening gates	Port- and starboard
Wiper	3x
Horn	yes



TV	Sony LCD on lift + Samsung LCD in masterbedroom
TV receiver	KPN digitenne
Radio-cd player	Clarion with Ipad-connection
DVD player	Philips
iPod connection	yes
Surround Sound System	yes
Sub-woofer	yes
Cockpit speakers	yes
Speakers in salon	yes
Speakers in cabin	yes
Fire extinguisher	yes
Extinguisher in engine room	yes
Auto extinguisher system	yes
Extra info	Speakers at flybridge, central vacuum cleaner system

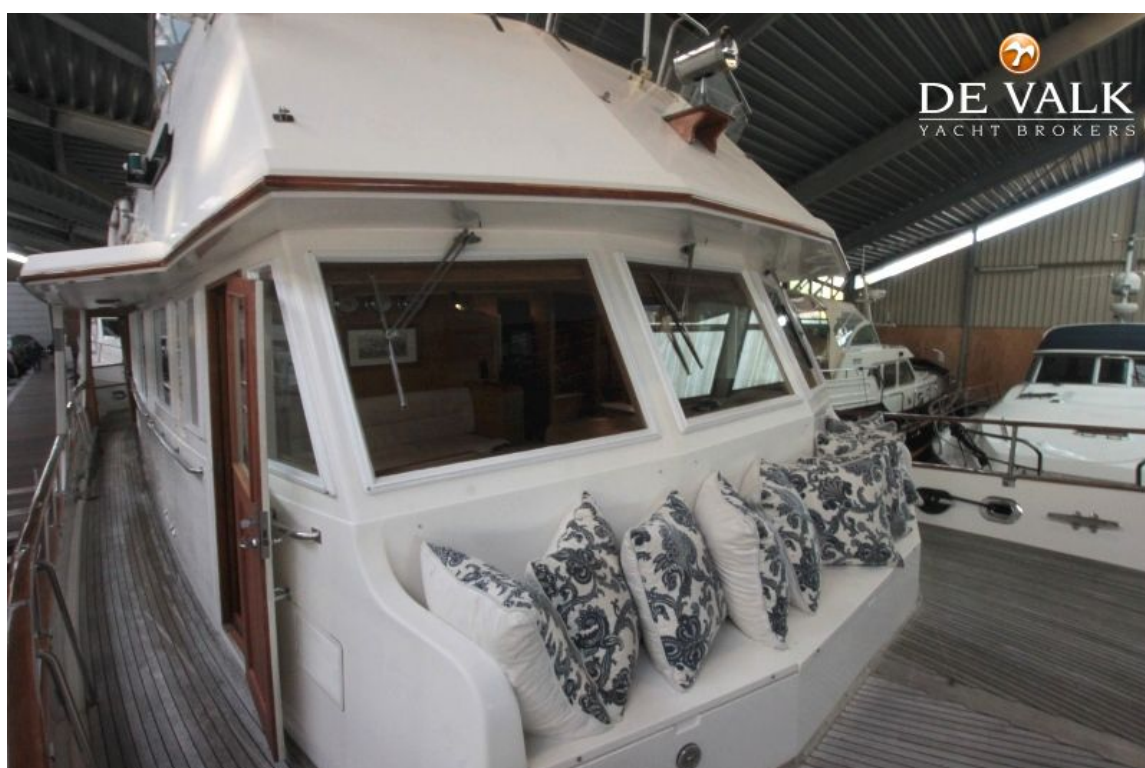




GRAND BANKS 58

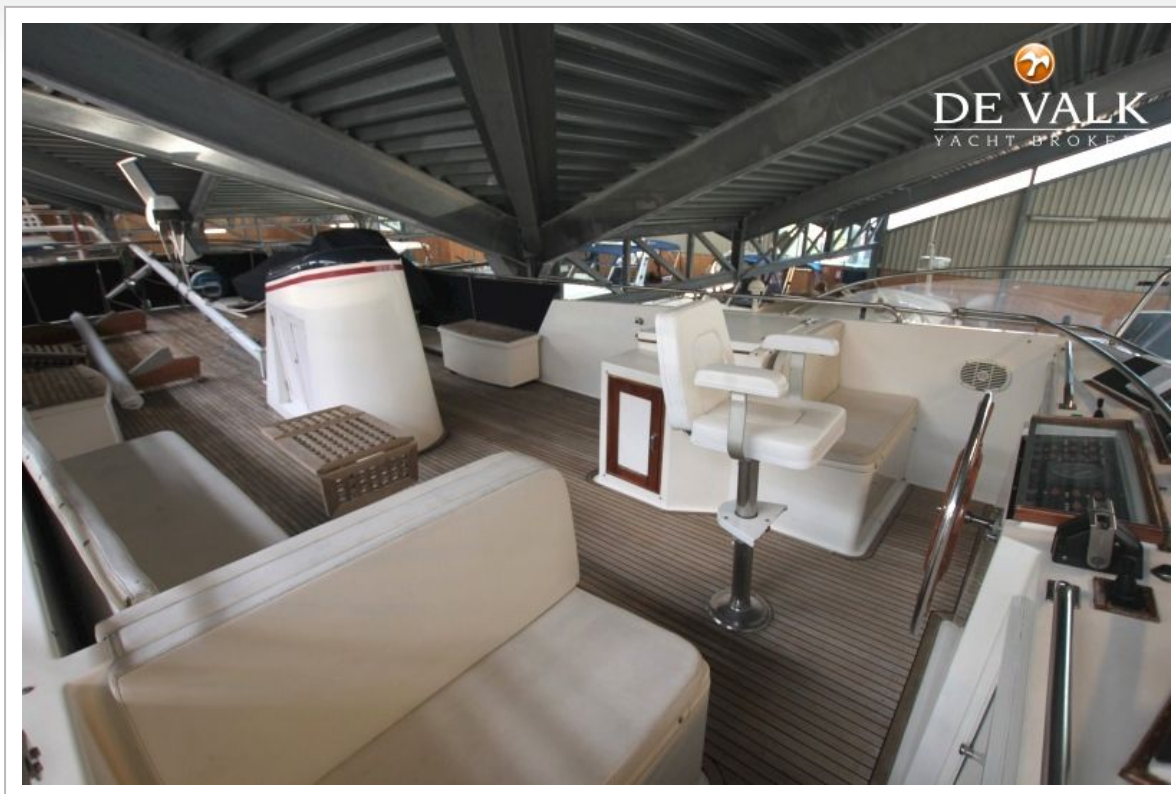










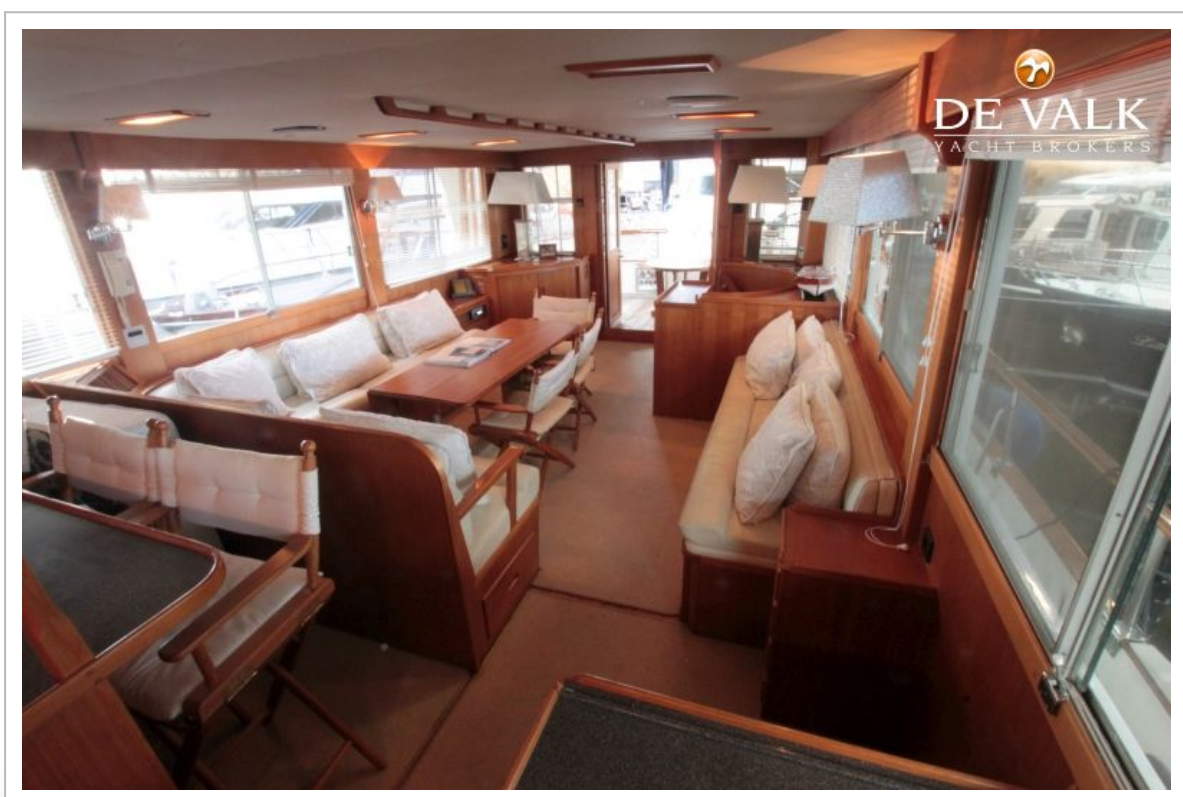
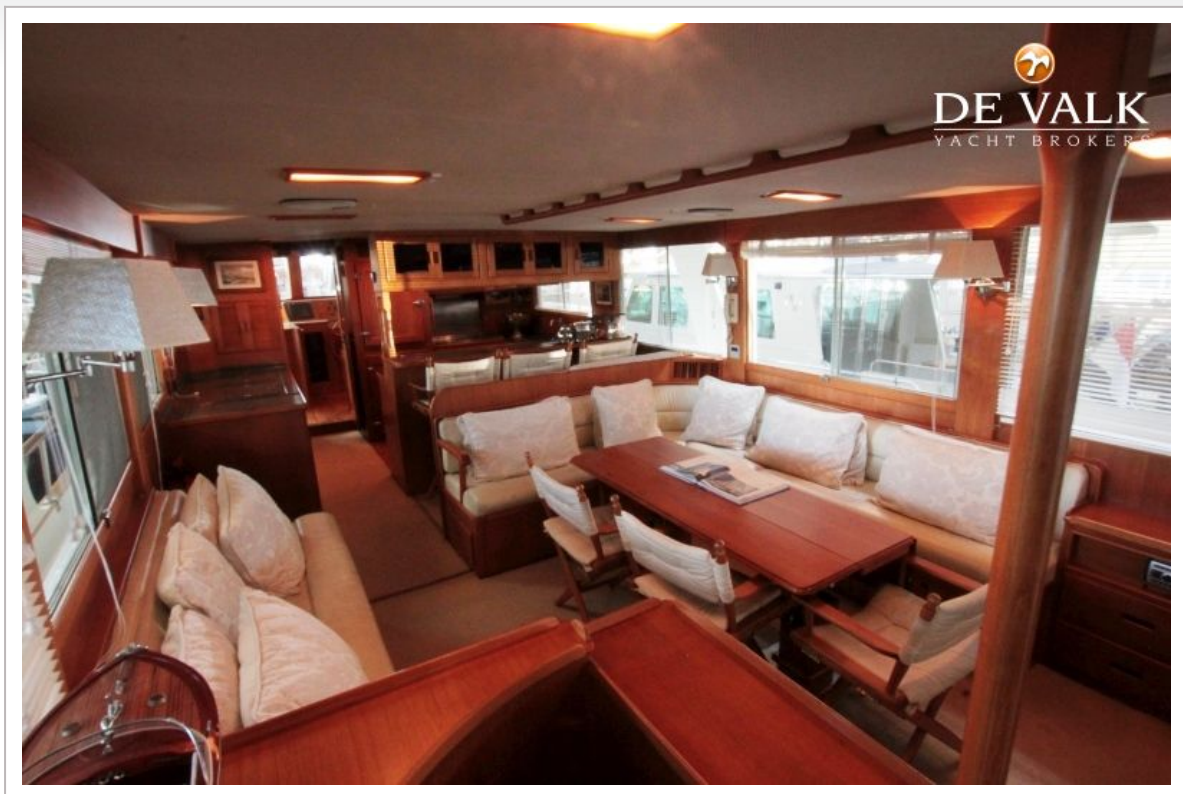








GRAND BANKS 58



GRAND BANKS 58





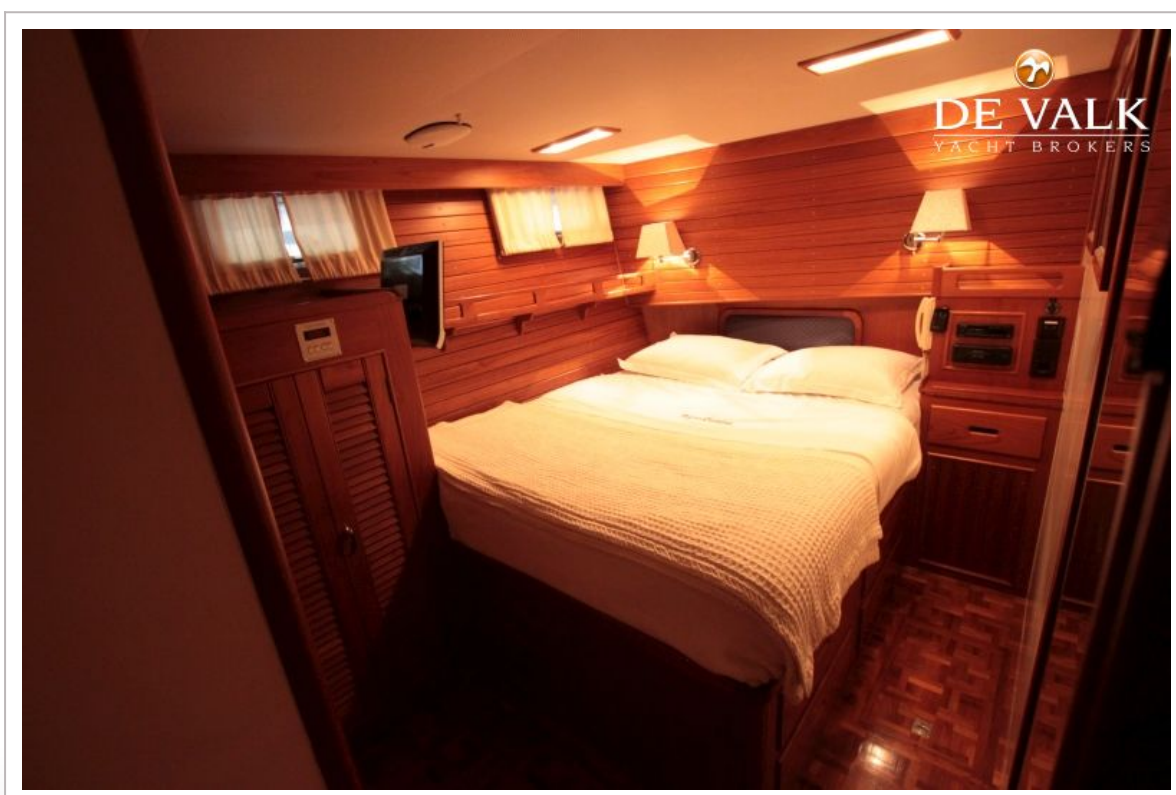
GRAND BANKS 58



GRAND BANKS 58



GRAND BANKS 58



GRAND BANKS 58



