



DE VALK  
YACHT BROKERS



## KEMPALA KOTTER 13.50



DE VALK  
YACHT BROKERS

# KEMPALA KOTTER 13.50

## BROKER'S COMMENTS

Very fine example of a Dutch built motorkotter. A well known design, comfortable interior and large aft deck. The sailing capacities make her suitable for long distance cruising. She will be auctioned on September 5th 2016 in cooperation with Schipveiling and BVA Auctions. Viewing days for this auction will be during 'Hiswa te Water 2016' in Amsterdam, from August 30th till September 4th. For further details go to:

<https://en.bva-auctions.com/auction/lot/21823/7742400> Starting price of the auction EUR. 25.000, offers can be made on the website of BVA.

*Peter van Diggele*

## SPECIFICATIONS

<b>Dimensions</b>	13.50 x 4.20 x 1.20 (m)	<b>Builder</b>	Kempers
<b>Built</b>	1978	<b>Cabins</b>	2
<b>Material</b>	Steel	<b>Berths</b>	5
<b>Engine(s)</b>	2 x DAF 475 diesel	<b>Hp/Kw</b>	2 x 85.00 (hp), 62.48 (kw)
<b>Asking price</b>	sold (VAT )	<b>Lying</b>	elsewhere / Not at sales office

## CONTACT

<b>Sales office</b>	De Valk Loosdrecht B.V.	<b>Telephone</b>	+31 (0)35 582 90 30
<b>Address</b>	't Breukeleveense Meentje 6 1231LM Loosdrecht / Wijdmeren NL	<b>E-mail</b>	loosdrecht@devalk.nl

## DISCLAIMER

These particulars are given in good faith as supplied but cannot be guaranteed.



# KEMPALA KOTTER 13.50

## GENERAL

Model	KEMPALA KOTTER 13.50
Type	motor yacht
LOA (m)	13,50
Beam (m)	4,20
Draft (m)	1,20
Air draft (m)	3,17
Headroom (m)	2,00
Year built	1978
Builder	Kempers
Country	The Netherlands
Designer	De Vries Lentsch
Displacement (t)	16
Hull material	steel
Hull colour	blue
Hull shape	multi hard chine
Superstructure material	steel
Rubbing strake	
Deck material	steel
Window frame	aluminum
Window material	glass
Mast can be lowered	manual
Fuel tank (litre)	1.200
Freshwater tank (litre)	2x 300
Blackwater tank (litre)	115L Installed 2012
Wheel steering	hydraulic
Inside helm position	yes
Outside helm position	hydraulic

## ACCOMMODATION

Cabins	2
--------	---



# KEMPALA KOTTER 13.50

Berths	5
Interior	teak
Floor	teak and holly
Aft deck	yes
Saloon	yes
Headroom saloon (m)	2,00
Aft Cabin	yes
Galley	yes
Countertop	stainless steel
Sink	stainless steel
Cooker	calor gas 4 burners
Oven	Gas
Fridge	Electrolux
Hot water system	geyser on calorgas
Water pressure system	yes
Coffee maker	yes
Owners cabin	double bed + single bed
Wardrobe	yes
Bathroom	yes
Toilet	shared
Shower	yes
Guest cabin 1	v-bed
Wardrobe	yes
Wash basin	yes

## MACHINERY

No of engines	2
Make	DAF
Type	475
HP	85,00
kW	62,48



# KEMPALA KOTTER 13.50

Fuel	diesel
Maximum speed (kn)	8
Cruising speed (kn)	6
Consumption (l/hr)	5L per engine
Engine hours	4180
Engine cooling system	closed keelcooling
Drive	shaft
Engine controls	bowden cable
Gearbox	hydraulic Paragon
Bowthruster	electric Side Power, 2005
Propeller type	fixed
Propeller blades	4
Propeller shaft material	stainless steel
Shaft lubrication	grease
Electrical installation	12/220 Volt
Start battery	yes
Service battery	yes
Bowthruster battery	yes
Battery charger	Mastervolt installed 2015
Inverter	Mastervolt installed 2015
Shorepower	yes

## NAVIGATION

Compass	Ritchie
VHF	Sailor
Autopilot	Vetus
Searchlight	yes

## EQUIPMENT

Sprayhood	2015
Cockpit cover	yes



# KEMPALA KOTTER 13.50

Sun awning	New
Boarding ladder	stainless steel
Gangway	yes
Anchor	yes
Anchor chain	yes
Windlass	electrical
Deck wash	yes
Sea railing	stainless steel
Wiper	yes
Radio-cd player	yes

## RIGGING

Material mast	aluminum
---------------	----------





BROKERAGE | CHARTER | BERTHS | FINANCE | INSURANCE | YACHT MANAGEMENT



**This yacht will be auctioned,  
for further details please visit [www.devalk.nl](http://www.devalk.nl)**

**Dit schip zal worden geveild,  
voor meer informatie gaat u naar [www.devalk.nl](http://www.devalk.nl)**

**Dieses Schiff wird versteigert,  
für weitere informationen besuchen Sie [www.devalk.nl](http://www.devalk.nl)**

[WWW.DEVALK.NL](http://WWW.DEVALK.NL)



**DE VALK**  
YACHT BROKERS





# KEMPALA KOTTER 13.50





## KEMPALA KOTTER 13.50



## KEMPALA KOTTER 13.50





# KEMPALA KOTTER 13.50



## KEMPALA KOTTER 13.50

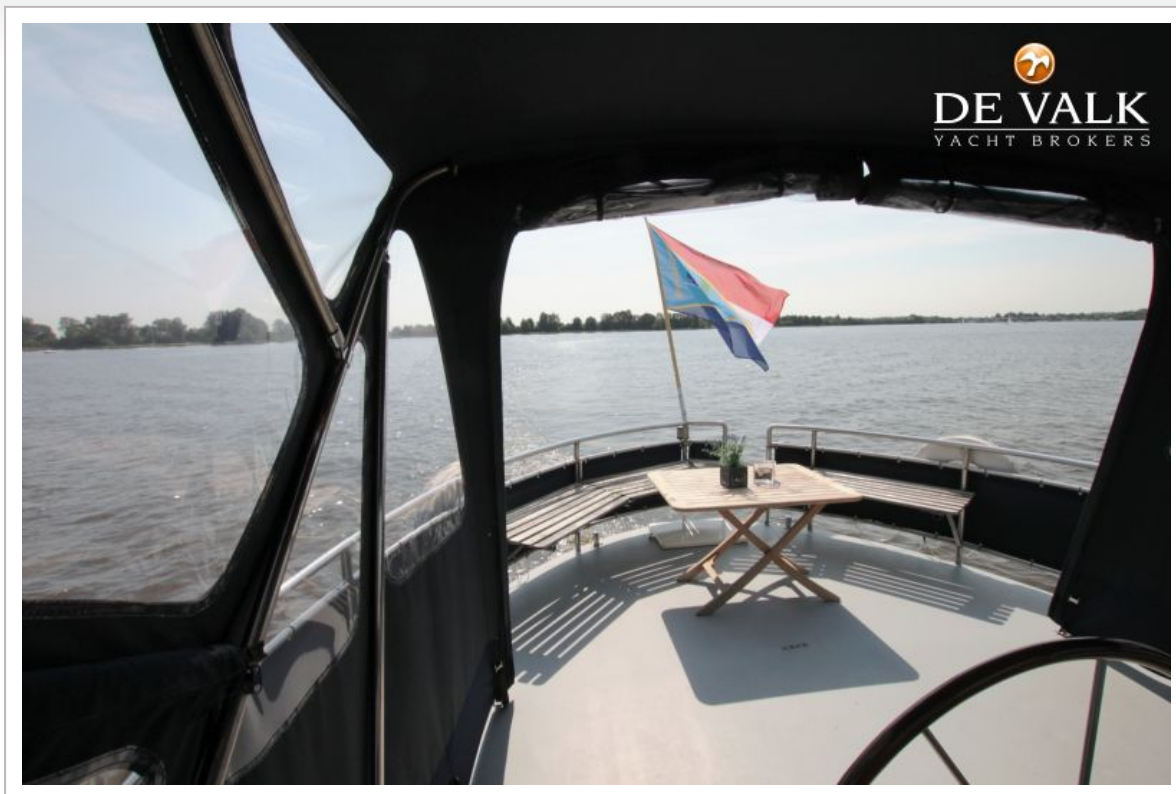


## KEMPALA KOTTER 13.50





## KEMPALA KOTTER 13.50

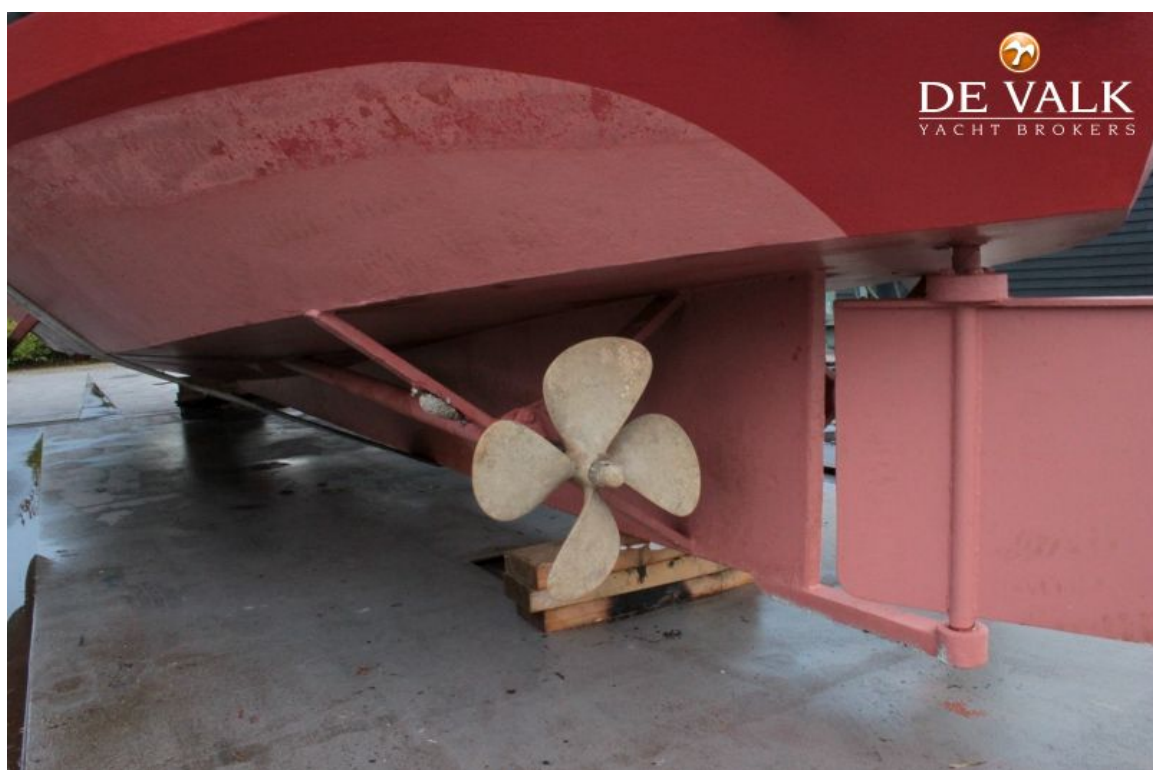


## KEMPALA KOTTER 13.50





## KEMPALA KOTTER 13.50



## KEMPALA KOTTER 13.50





## KEMPALA KOTTER 13.50





## KEMPALA KOTTER 13.50



## KEMPALA KOTTER 13.50

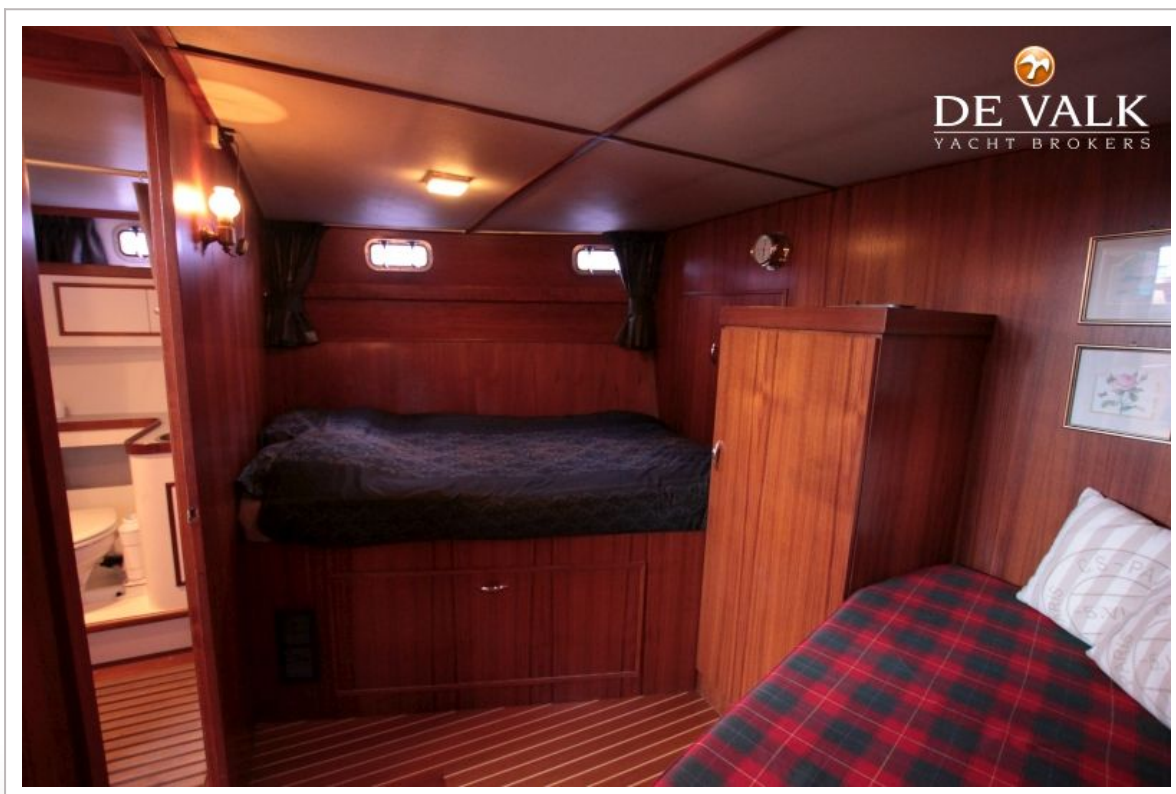
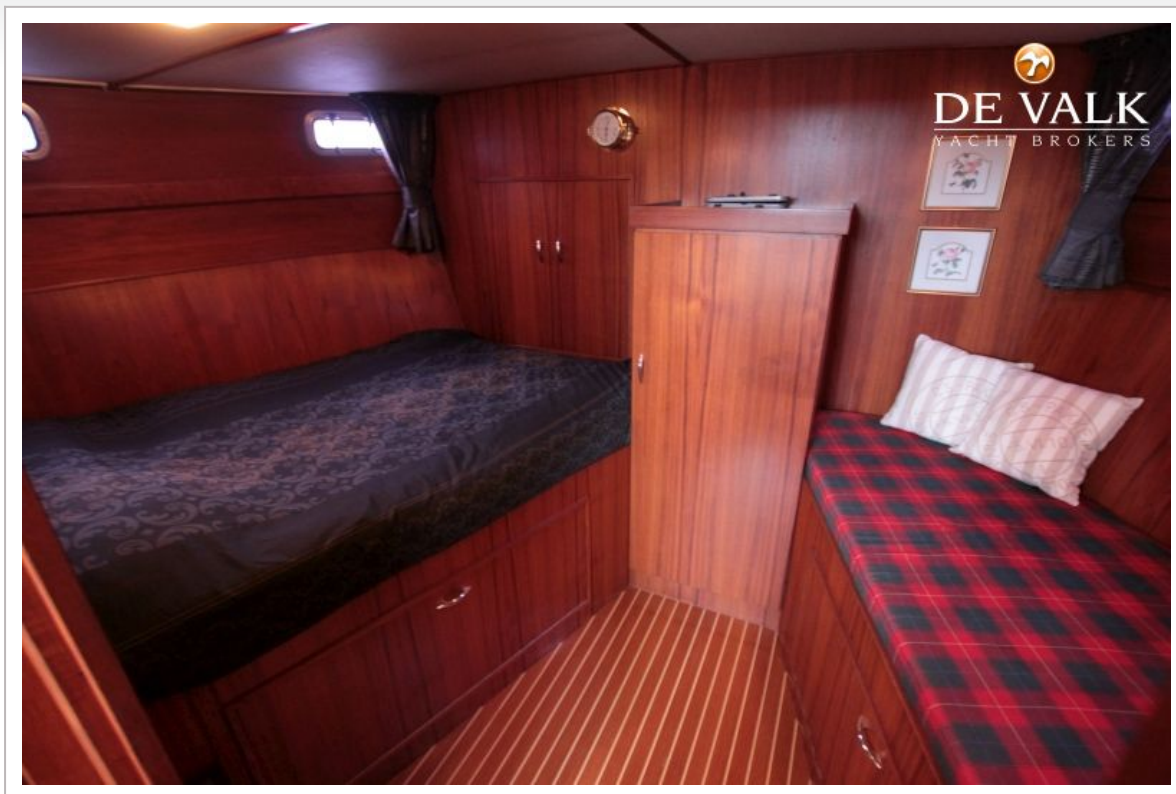




## KEMPALA KOTTER 13.50

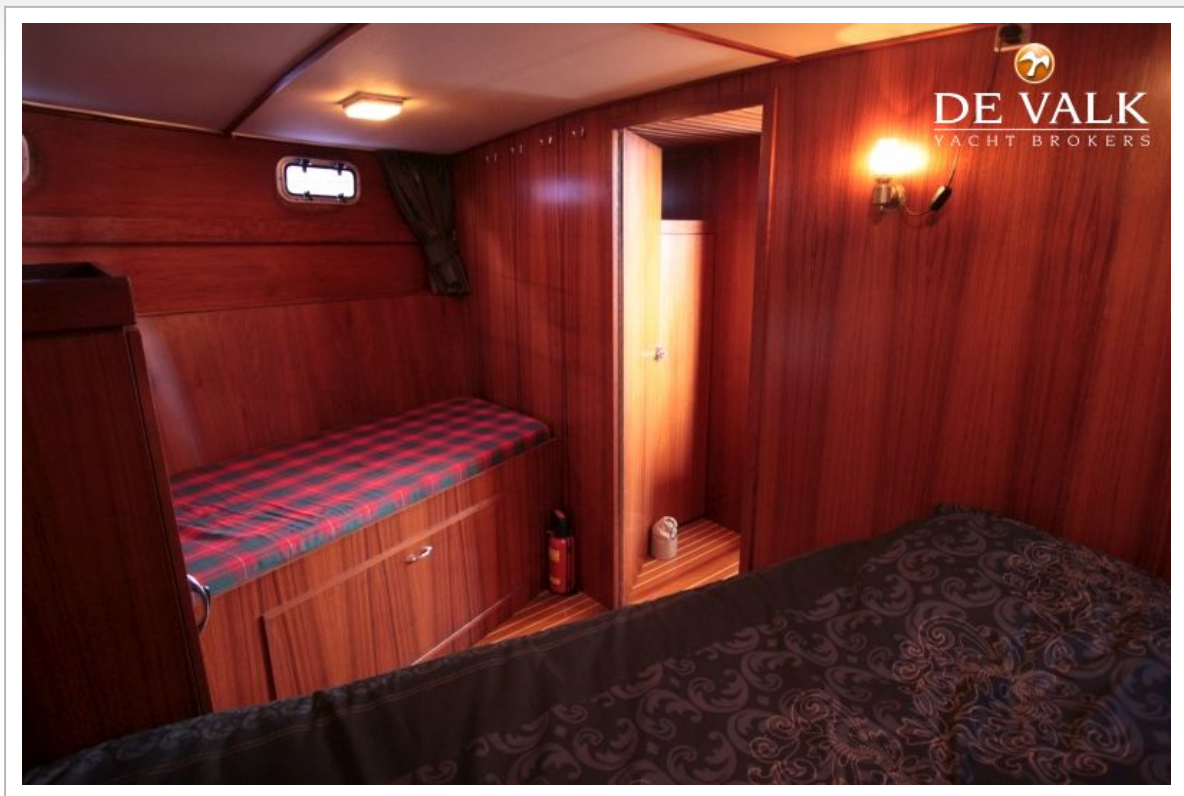


## KEMPALA KOTTER 13.50



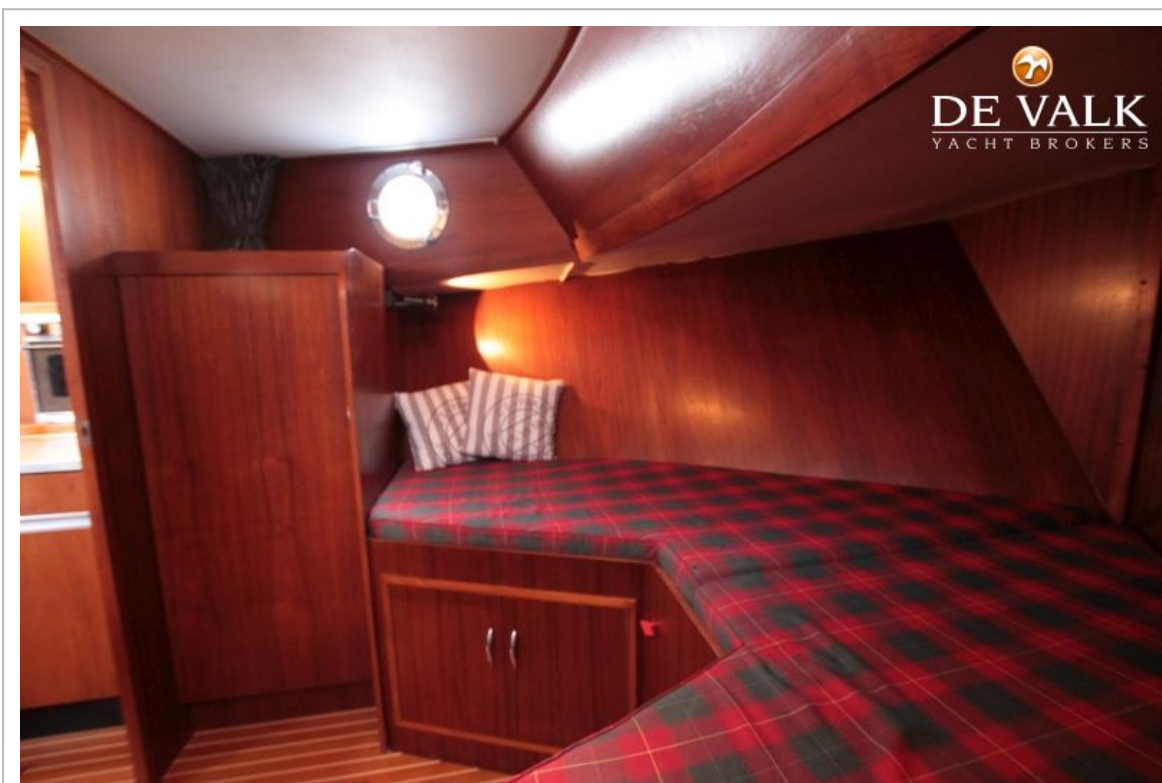


## KEMPALA KOTTER 13.50





## KEMPALA KOTTER 13.50



## KEMPALA KOTTER 13.50

