



## PRINCESS 33

# PRINCESS 33

## BROKER'S COMMENTS

All time favorite, the Princess 33. Easy handling. Suitable for cruising the coastal waters and inland waterways. Due to her headway of only 2,70 m. even the inland waterways of France are on the list. The upgrades made in 2008 will bring a more than pleasant stay on board. Must be seen!

*Peter van Diggele*

## SPECIFICATIONS

<b>Dimensions</b>	10.60 x 3.43 x 0.90 (m)	<b>Builder</b>	Princess Yachts - Plymouth
<b>Built</b>	1978	<b>Cabins</b>	1
<b>Material</b>	GRP	<b>Berths</b>	4
<b>Engine(s)</b>	2 x Ford Mermaid TD 2712E diesel	<b>Hp/Kw</b>	2 x 130.00 (hp), 95.55 (kw)
<b>Asking price</b>	sold (VAT )	<b>Lying</b>	contact Loosdrecht

## CONTACT

<b>Sales office</b>	De Valk Loosdrecht B.V.	<b>Telephone</b>	+31 (0)35 582 90 30
<b>Address</b>	't Breukeleveense Meentje 6 1231LM Loosdrecht / Wijdmeren NL	<b>E-mail</b>	loosdrecht@devalk.nl

## DISCLAIMER

These particulars are given in good faith as supplied but cannot be guaranteed.



## GENERAL

Model	PRINCESS 33
Type	motor yacht
LOA (m)	10,60
Beam (m)	3,43
Draft (m)	0,90
Air draft (m)	2,70
Headroom (m)	1,95
Year built	1978
Builder	Princess Yachts - Plymouth
Country	Great Britain
Designer	John Bennet
Displacement (t)	6
Hull material	GRP
Hull colour	off-white
Hull shape	deep-V
Superstructure material	GRP
Rubbing strake	rubber
Deck finish	moulded in
Dorades	yes
Window frame	aluminum
Window material	glass
Radar arch	collapsible
Fuel tank (litre)	550
Level indicator (fuel tank)	yes
Freshwater tank (litre)	2x 300
Blackwater tank extraction	30
Wheel steering	hydraulic
Inside helm position	yes

## ACCOMMODATION



# PRINCESS 33

Cabins	1
Berths	4
Floor	teak and holly
Open cockpit	yes
Saloon	yes
Headroom saloon (m)	1,95
Heating	Eberspacher D5
Dinette	yes
Galley	yes
Countertop	yes
Sink	stainless steel
Cooker	calor gas + grill,Smev
Oven	Smev
Fridge	Waeco
Hot water system	220V + engine 40 L.
Water pressure system	electrical Jabsco
Owners cabin	v-bed
Bathroom	
Toilet	shared Jabsco
Toilet system	manual
Wash basin	in the bathroom
Shower	shared

## MACHINERY

No of engines	2
Make	Ford Mermaid
Type	TD 2712E
HP	130,00
kW	95,55
Fuel	diesel
Year installed	1978



Maximum speed (kn)	18
Cruising speed (kn)	14
Consumption (l/hr)	16
Engine cooling system	freshwater heat exchanger
Drive	shaft
Engine controls	bowden cable
Gearbox	hydraulic
Propeller type	fixed
Propeller shaft material	stainless steel
Shaft lubrication	water
Electric bilge pump	yes
Start battery	1x 120 Amp.
Service battery	2x 250 Amp.
Battery monitor	Phoenix Multo Control
Battery charger/inverter	Victron Multi 1600W/70Amp.
Shorepower	yes
Trimtabs	+ Led indication, 2008
Extra info	Dynamo 150 Amp.

## NAVIGATION

Compass	Autohelm
---------	----------

## EQUIPMENT

Cockpit cover	yes
Cockpit cushions	yes
Bathing platform	Teak
Boarding ladder	Teak
Deck shower	yes
Anchor	yes
Windlass	manual S-L Hyspeed
Sea railing	stainless steel



Wiper  
DVD player

Parrallel  
yes



# PRINCESS 33



# PRINCESS 33

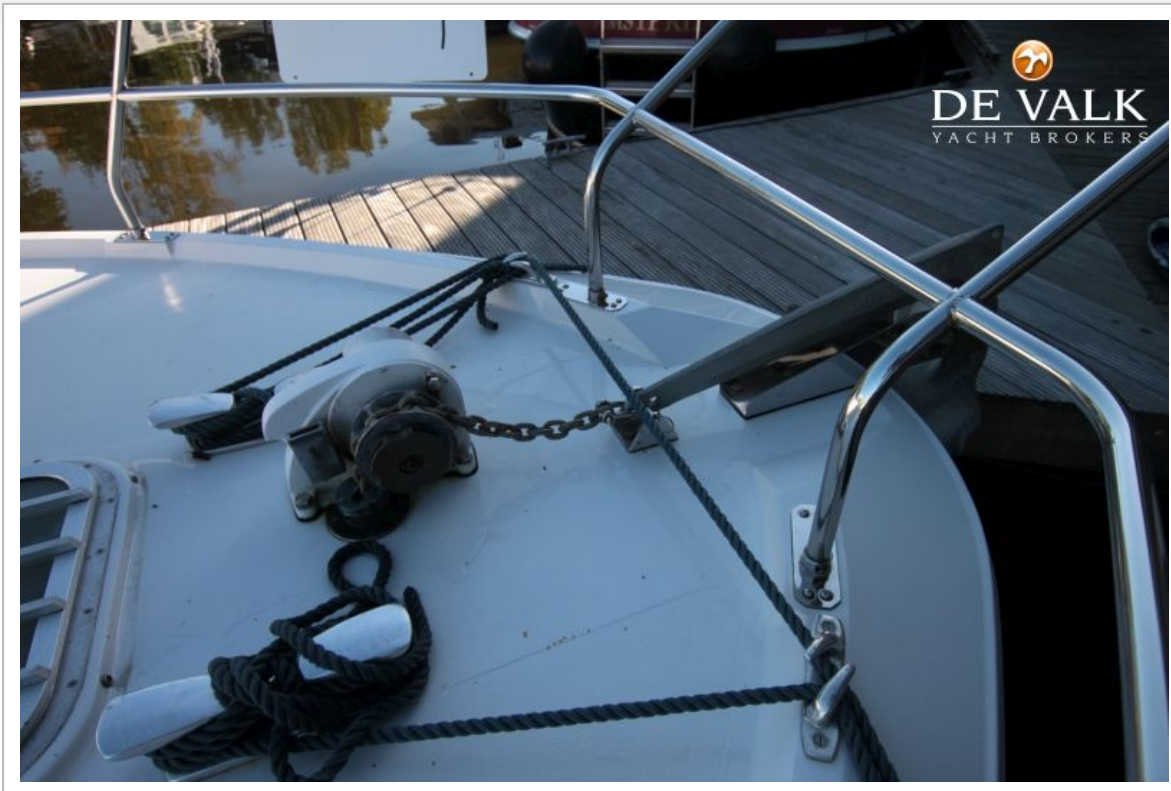




# PRINCESS 33



# PRINCESS 33





# PRINCESS 33



# PRINCESS 33





# PRINCESS 33



## PRINCESS 33

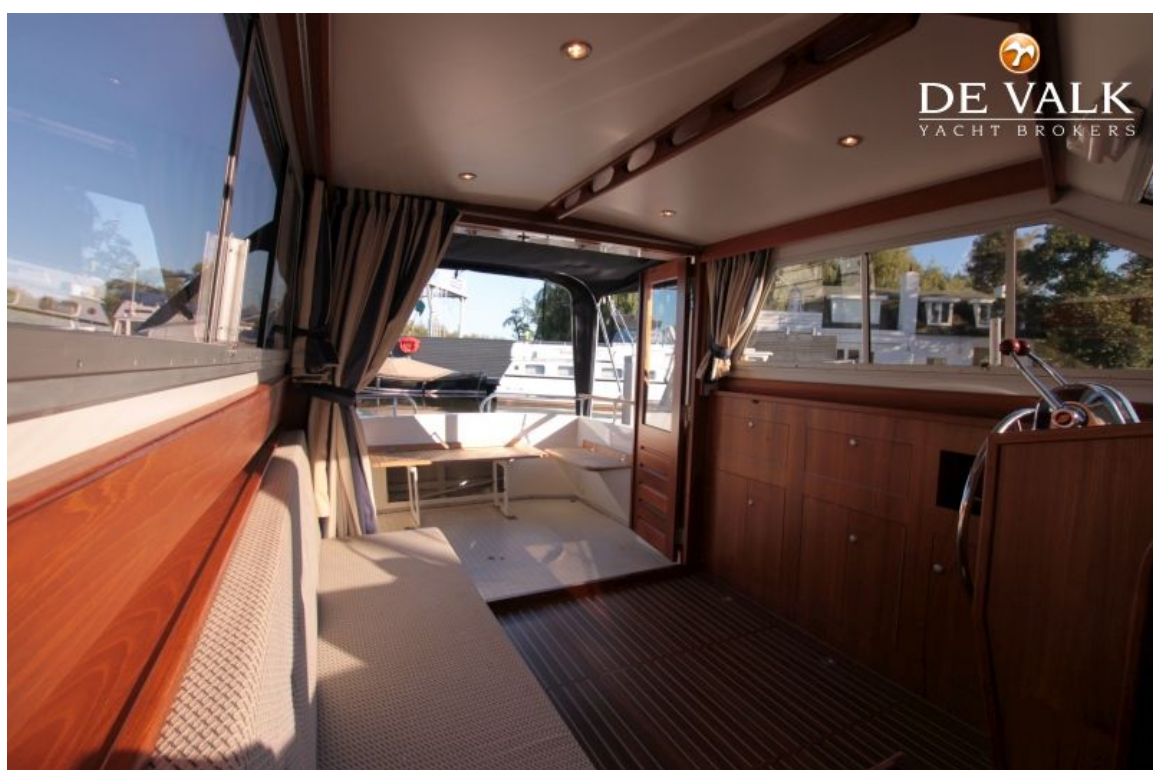




# PRINCESS 33



# PRINCESS 33

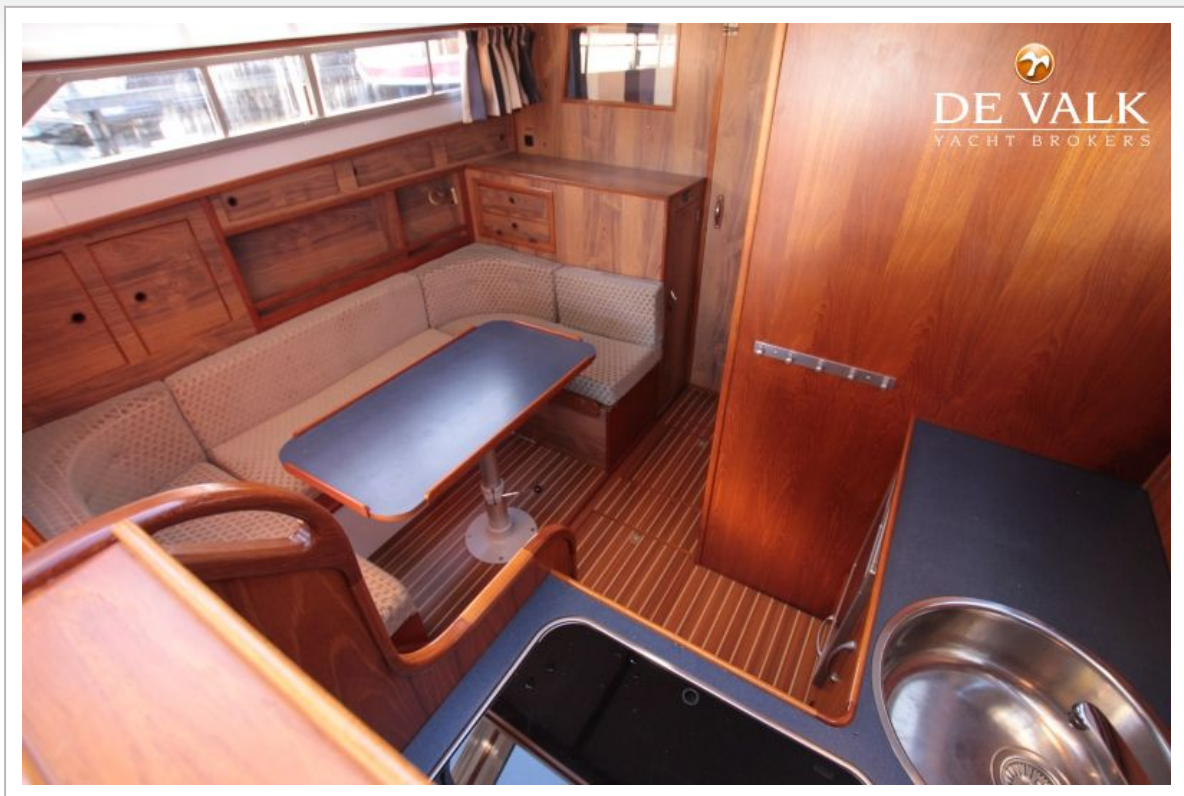




## PRINCESS 33

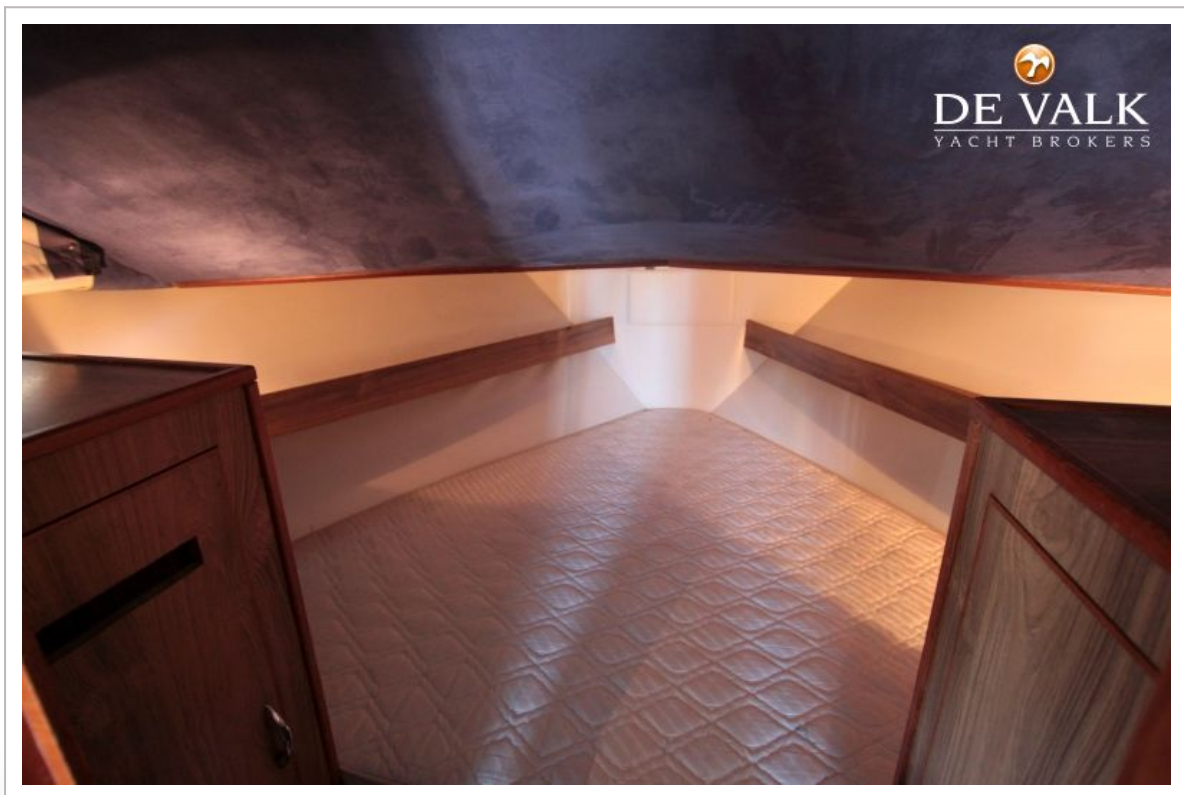


# PRINCESS 33





# PRINCESS 33



## PRINCESS 33

