



DE VALK  
YACHT BROKERS



## MULDER 88 FLYBRIDGE



DE VALK  
YACHT BROKERS

# MULDER 88 FLYBRIDGE

## BROKER'S COMMENTS

Magnificent Mulder in superb and well maintained condition. Engineered according to CE-A regulations. Built to the highest standards. Featuring a gracious profile, a stunning interior and fully equipt. Her unique, round-bilged hull, built to Lloyds specifications, guarantees you superb trim and stability whatever speed you hoose to cruise. Below decks, the Mulder 88 combines exclusive Dutch standards of luxury and comfort with the practical design and top-drawer facilities that you'd expect from a bluewater yacht.

*Leonard Bonnema*

## SPECIFICATIONS

<b>Dimensions</b>	27.10 x 6.50 x 1.80 (m)	<b>Builder</b>	Mulder Shipyard
<b>Built</b>	2001	<b>Cabins</b>	4
<b>Material</b>	Aluminium	<b>Berths</b>	7
<b>Engine(s)</b>	2 x Caterpillar 3412E DI-TTA diesel	<b>Hp/Kw</b>	2 x 1,400.00 (hp), 1,045.00 (kw)
<b>Asking price</b>	sold (VAT )	<b>Lying</b>	elsewhere / Not at sales office

## CONTACT

<b>Sales office</b>	De Valk Amsterdam B.V.	<b>Telephone</b>	+31 (0)35 5829014
<b>Address</b>	Marinaweg 8 (postal address) 1361 AC Almere NL	<b>E-mail</b>	amsterdam@devalk.nl

## DISCLAIMER

These particulars are given in good faith as supplied but cannot be guaranteed.



# MULDER 88 FLYBRIDGE

## GENERAL

<b>Model</b>	MULDER 88 FLYBRIDGE
<b>Type</b>	motor yacht
<b>LOA (m)</b>	27,10
<b>Beam (m)</b>	6,50
<b>Draft (m)</b>	1,80
<b>Year built</b>	2001
<b>Builder</b>	Mulder Shipyard
<b>Country</b>	The Netherlands
<b>Designer</b>	Guido de Groot Design
<b>Displacement (t)</b>	95
<b>Hull material</b>	aluminium
<b>Hull shape</b>	round-bilged Ingenious hull design
<b>Superstructure material</b>	aluminium
<b>Deck material</b>	aluminium
<b>Deck finish</b>	teak
<b>Antifouling (year)</b>	2013
<b>Flybridge</b>	yes
<b>Flybridge cockpit cover</b>	yes
<b>Flybridge suncover</b>	yes
<b>Fuel tank (litre)</b>	5 tanks total 17000 ltrs
<b>Fuel daytank (litre)</b>	yes
<b>Freshwater tank (litre)</b>	3000 liters
<b>Blackwater tank (litre)</b>	1000 liters
<b>Wheel steering</b>	yes
<b>Flybridge helm position</b>	
<b>More info on hull</b>	New paintjob 2009
<b>Extra info</b>	Excellent performance at slower speeds, but 24 knots is possible

## ACCOMMODATION

<b>Cabins</b>	4
---------------	---



# MULDER 88 FLYBRIDGE

Berths	7
Crew cabin	yes
Crew berths	3
Open cockpit	yes
Aft deck	yes
Pilot house	yes
Headroom saloon (m)	2,10m
Heating	Kabola central heating in each cabin
Air-conditioning	Central water system with fan-coil units in each cabin
Chart table	yes
Dining room	yes
Galley	yes
Countertop	corian
Sink	stainless steel
Cooker	yes
Oven	yes
Extractor	yes
Microwave	Miele
Fridge	Miele
Freezer	Miele
Dishwasher	Miele
Owners cabin	double bed Kingsize
Wardrobe	Walk-in closet
Bathroom	en suite
Toilet	en suite
Toilet system	electric
Wash basin	in the bathroom Double
Shower	en suite
Bath tub	en suite
Jacuzzi	On Flybridge
Guest cabin 1	double bed
Wardrobe	yes



# MULDER 88 FLYBRIDGE

Bathroom	yes
Toilet	yes
Toilet system	electric
Shower	yes
Guest cabin 2	twin single
Bathroom	en suite
Toilet	yes
Toilet system	electric
Shower	yes
Guest cabin 3	single bed
Wardrobe	yes
Crew cabin(s)	Good quality accomodation for three with settee and kitchenette
Washing machine	yes
Dryer	yes
Ironing facilities	yes
Flybridge	yes
Extra info	All taps Grohe

## MACHINERY

No of engines	2
Make	Caterpillar
Type	3412E DI-TTA
HP	1400,00
kW	1045,00
Fuel	diesel
Maximum speed (kn)	24
Cruising speed (kn)	10
Consumption (l/hr)	100 (9a 10 kn)
Range (nm)	2000
Engine hours	2251 bb/ 2253 sb
Bowthruster	40 ps



# MULDER 88 FLYBRIDGE

<b>Propeller type</b>	yes
<b>Propeller blades</b>	5
<b>Shaft lubrication</b>	water
<b>Generator</b>	22,5 kw Onan
<b>Running hours generator</b>	3925
<b>Generator 2</b>	22,5 kw Onan
<b>Running hours generator 2</b>	3927
<b>Batteries</b>	yes
<b>Start battery</b>	2x 230ah / 24V
<b>Service battery</b>	880 ah/24V
<b>Generator battery</b>	yes
<b>Inverter</b>	2x 3 KW Mass
<b>Battery charger/inverter</b>	2x 100 Ampere Mass
<b>Shorepower</b>	yes
<b>Stabilizers</b>	Naiad / KoopNautic with AVA control
<b>Extra info</b>	Aquadrive connection to eliminate vibrations + very low noise

## NAVIGATION

<b>Compass</b>	yes
<b>Compass on flybridge</b>	yes
<b>Log</b>	yes
<b>VHF</b>	yes
<b>Autopilot</b>	Raytheon
<b>Radar/GPS/plotter</b>	Simrad (2009)
<b>AIS receiver</b>	yes
<b>AIS transponder</b>	yes

## EQUIPMENT

<b>Cockpit cushions</b>	yes
<b>Cockpit table</b>	yes
<b>Cockpit chairs</b>	yes



# MULDER 88 FLYBRIDGE

<b>Bathing platform</b>	yes
<b>Boarding ladder</b>	yes
<b>Gangway</b>	yes
<b>Anchor</b>	2x 75 kg
<b>Anchor chain</b>	2 x 100 meters
<b>Anchor chain</b>	13 mm
<b>Deck wash</b>	yes
<b>Dinghy</b>	6 person Scanner Ino tender,inboard 175 bhp engine in garaga
<b>Deck crane</b>	1x 450kg for tender, 1x 350kg jetski on flybridge
<b>Sea railing</b>	yes
<b>Grab rail (superstructure)</b>	yes
<b>Life raft</b>	yes
<b>Fenders</b>	yes
<b>Mooring lines</b>	yes
<b>Spare parts</b>	yes
<b>TV</b>	yes
<b>Extra info</b>	Yamaha 120 bhp waverunner on flybridge



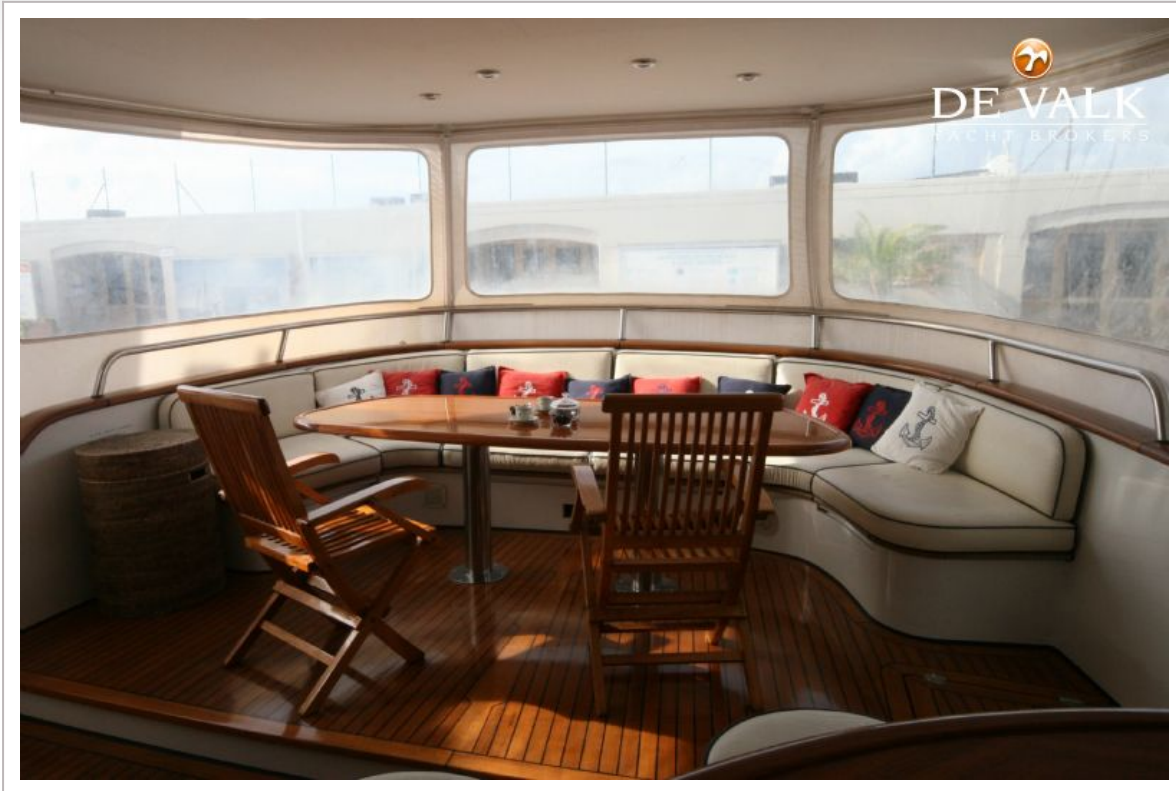
# MULDER 88 FLYBRIDGE



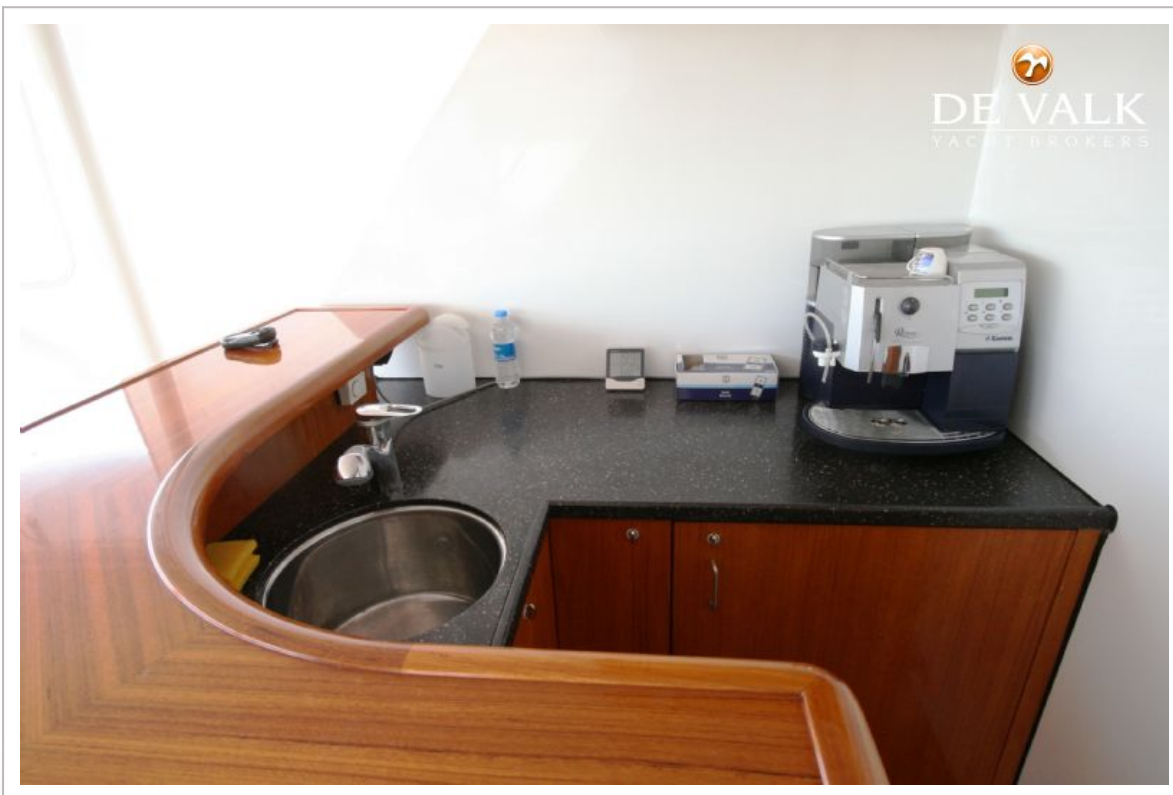
# MULDER 88 FLYBRIDGE



# MULDER 88 FLYBRIDGE



# MULDER 88 FLYBRIDGE



# MULDER 88 FLYBRIDGE



# MULDER 88 FLYBRIDGE



# MULDER 88 FLYBRIDGE



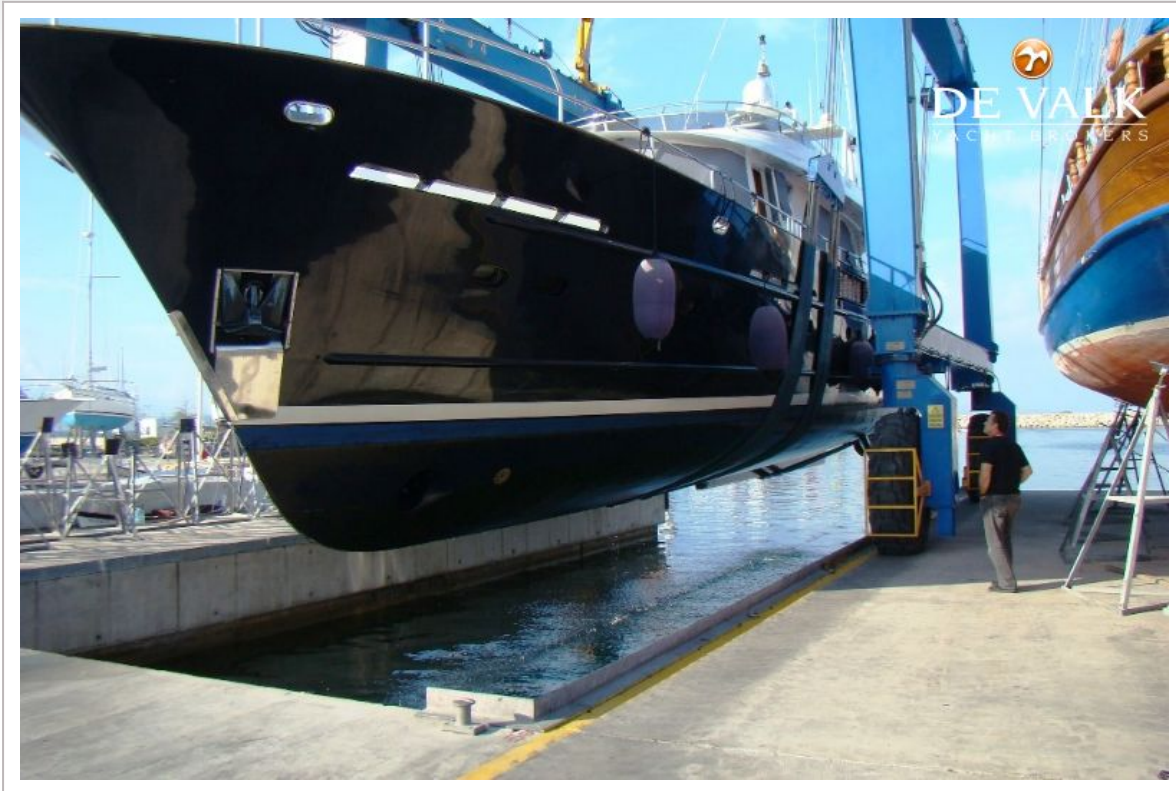
# MULDER 88 FLYBRIDGE



# MULDER 88 FLYBRIDGE



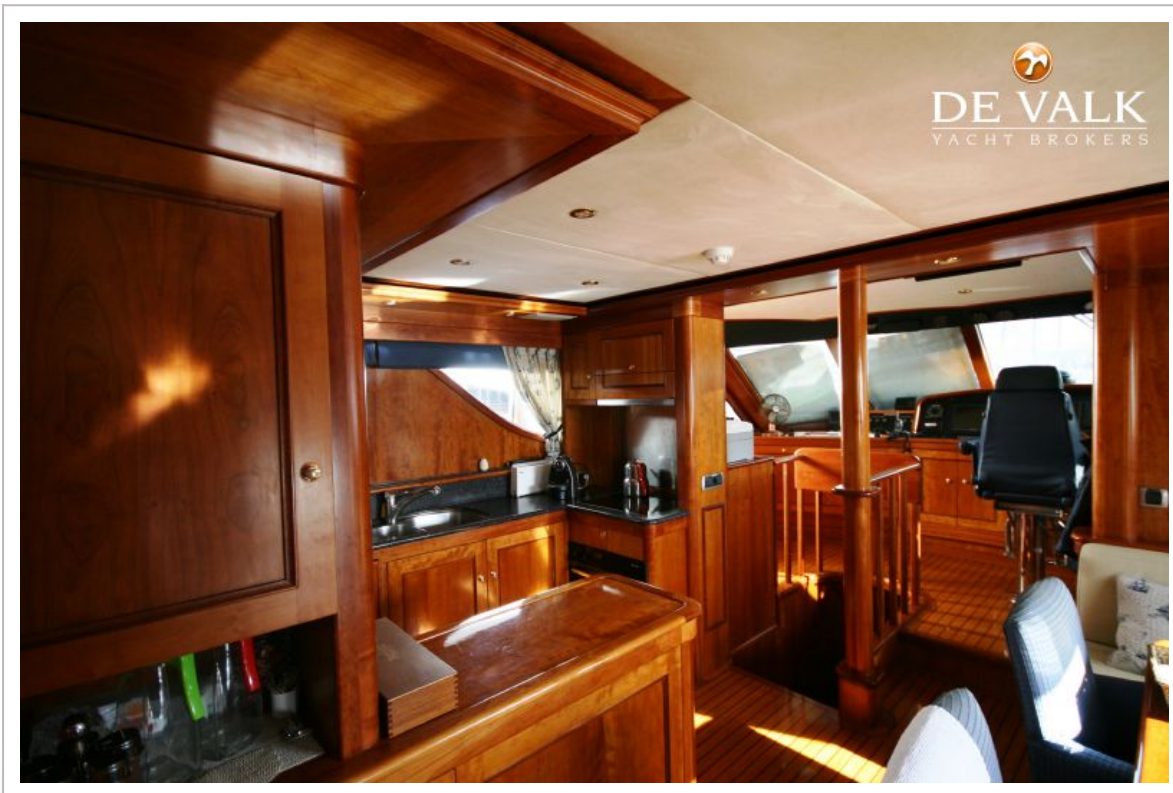
# MULDER 88 FLYBRIDGE



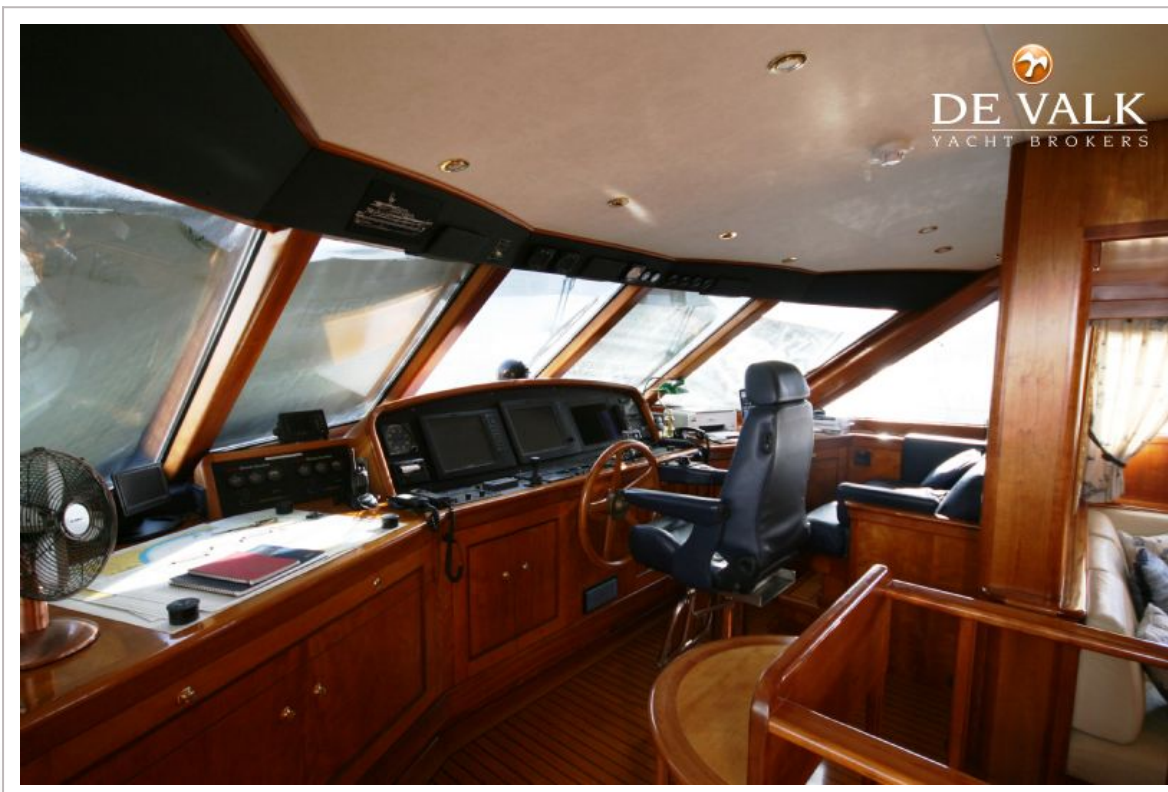
# MULDER 88 FLYBRIDGE



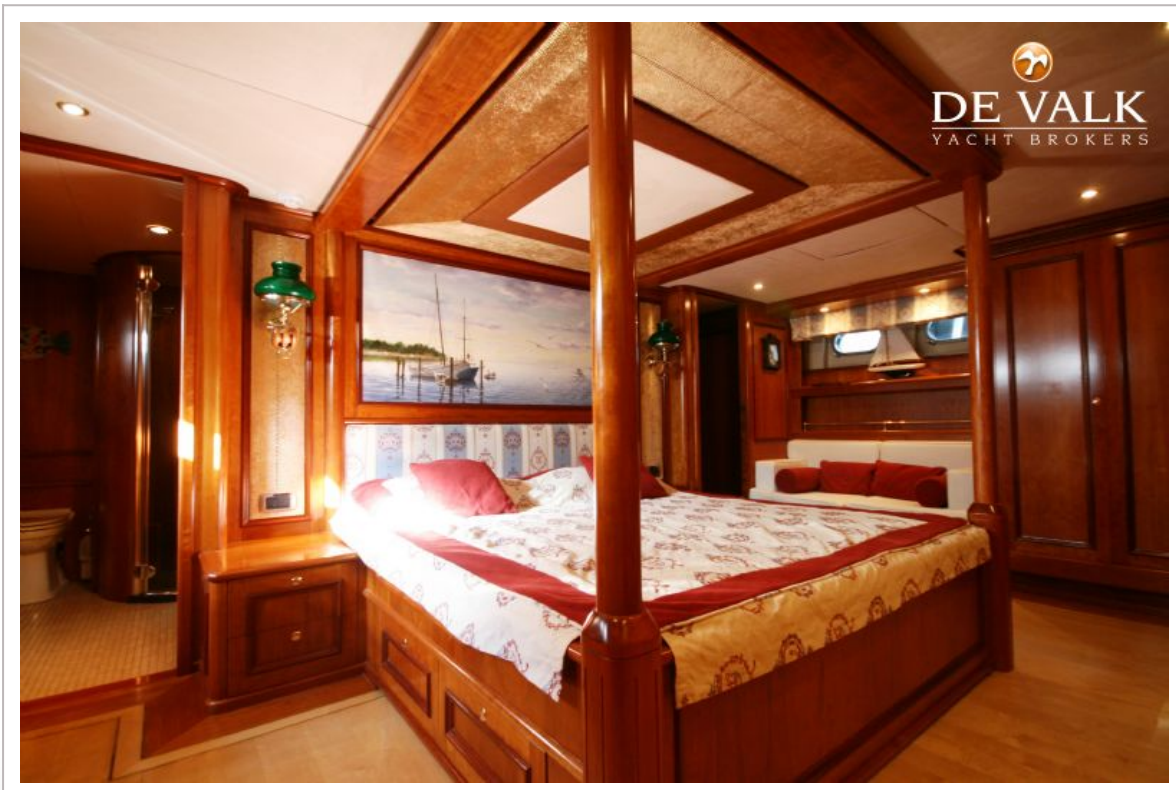
# MULDER 88 FLYBRIDGE



# MULDER 88 FLYBRIDGE



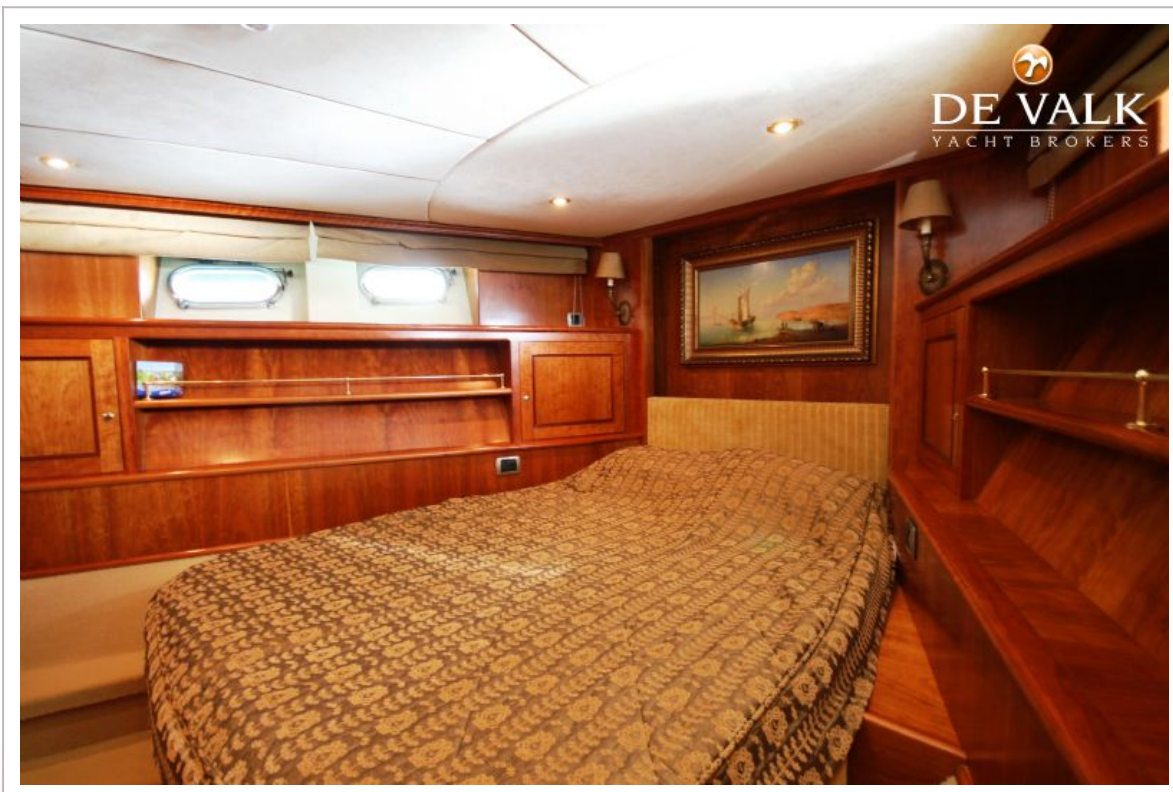
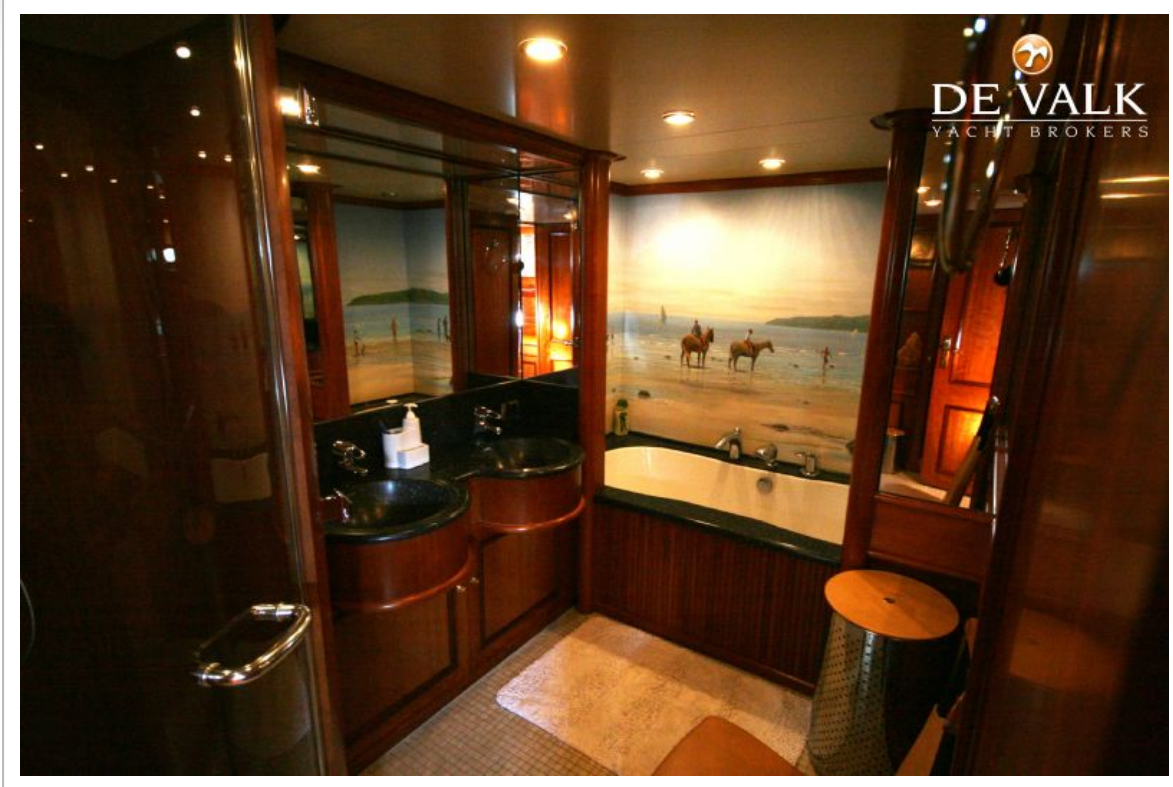
# MULDER 88 FLYBRIDGE



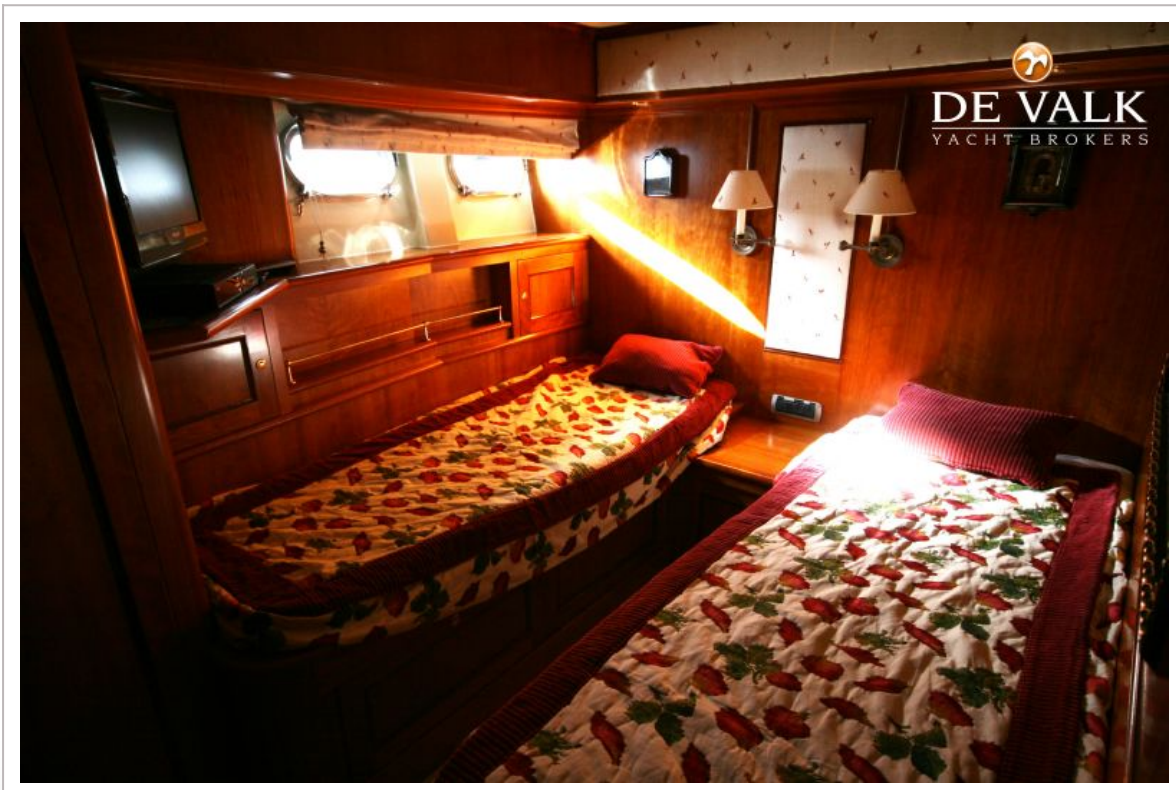
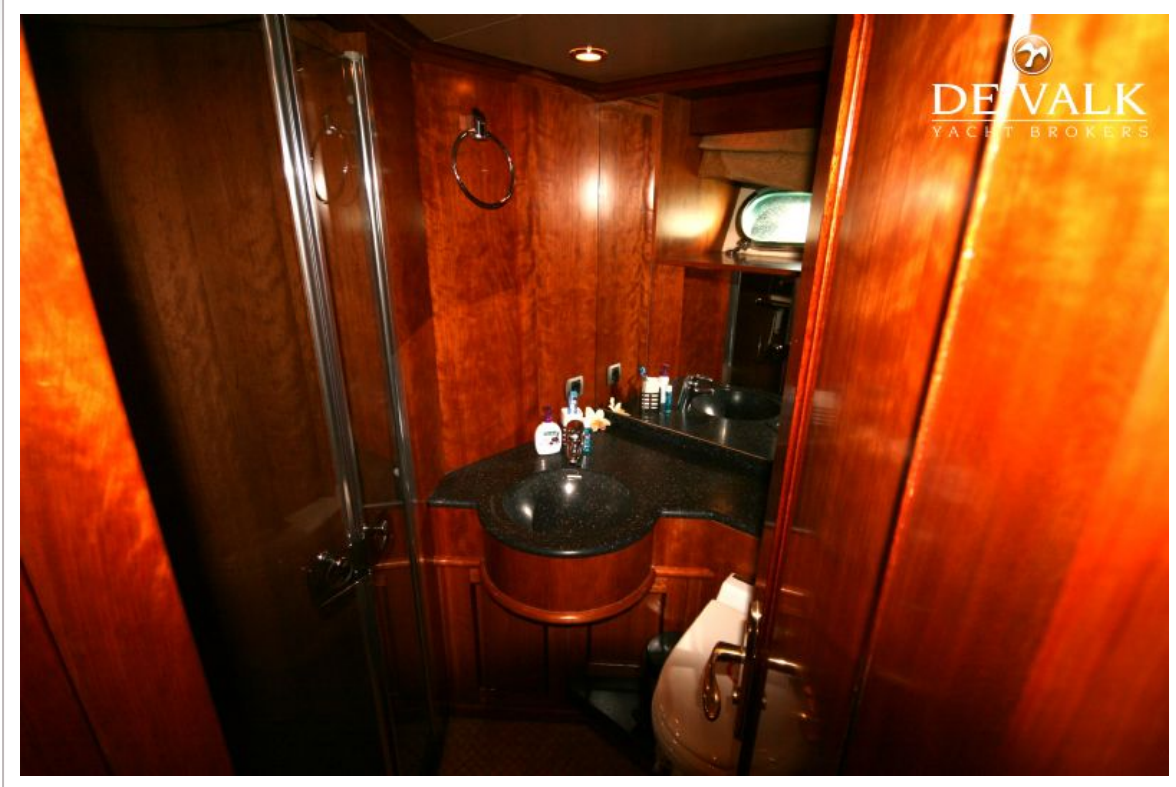
# MULDER 88 FLYBRIDGE



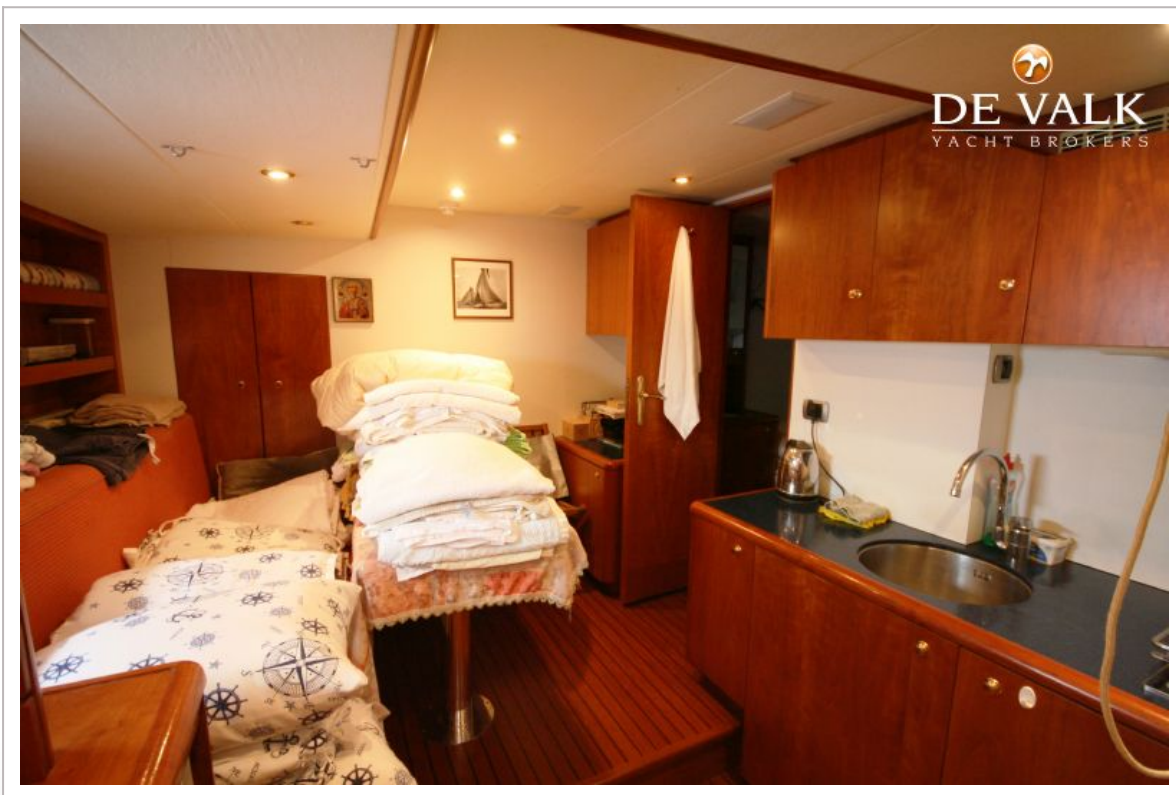
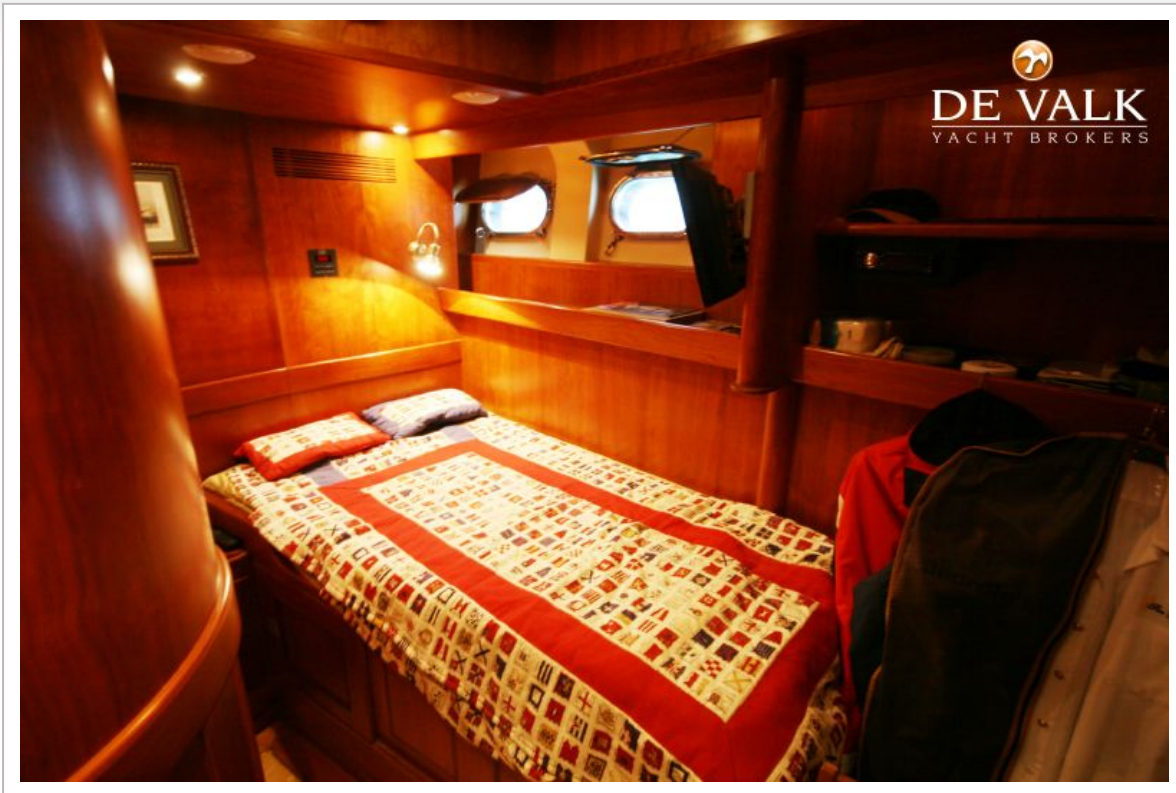
# MULDER 88 FLYBRIDGE



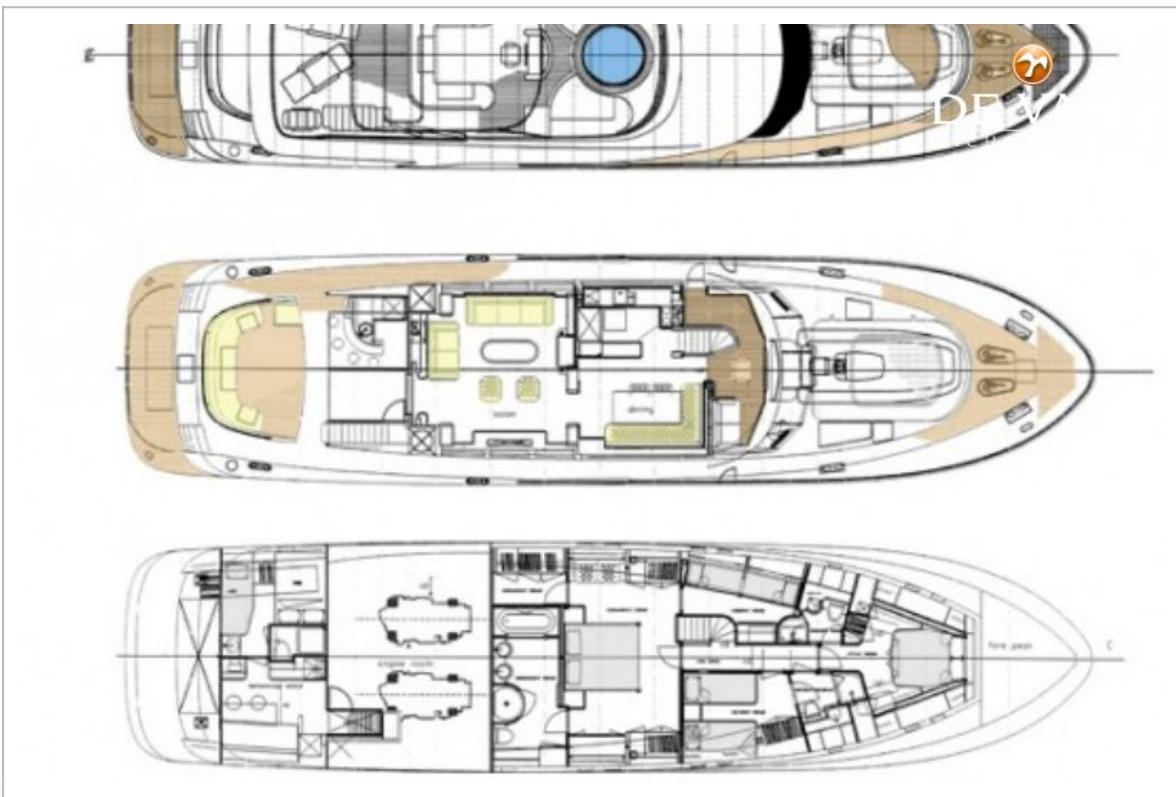
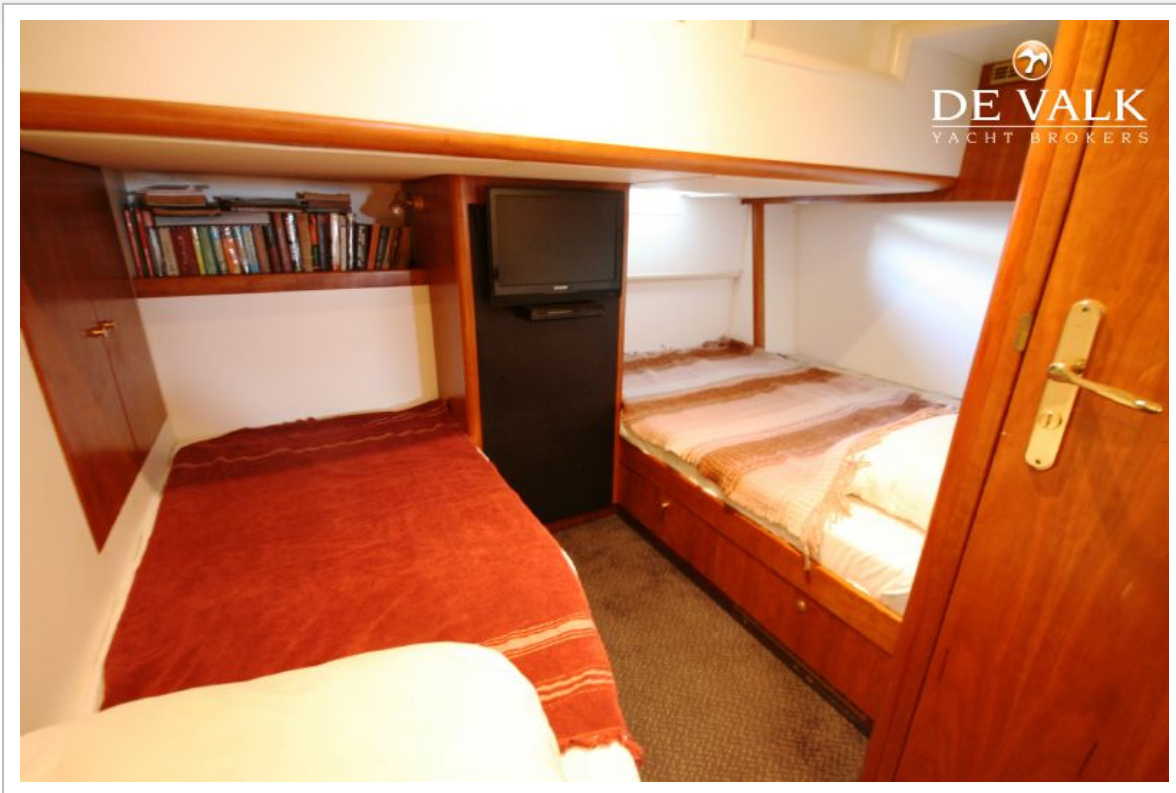
# MULDER 88 FLYBRIDGE



# MULDER 88 FLYBRIDGE



# MULDER 88 FLYBRIDGE



# MULDER 88 FLYBRIDGE

