



DE VALK
YACHT BROKERS



VALKVLET 1130



DE VALK
YACHT BROKERS

BROKERAGE | CHARTER | BERTHS | FINANCE | INSURANCE | YACHT MANAGEMENT

VALKVLET 1130

BROKER'S COMMENTS

This Valkvlet 11,30 OK is a very popular yacht built in 1993 by the famous P. Valk yard in Franeker, The Netherlands. With her roomy mahogany interior she is the ideal boat for inland and coastal cruising. Offered with teak decks, solar panels (2012), new batteries(2011/2013), bowthruster, cockpitcover (2012) and many more options. She is waiting for a new owner!

Erwin van den Braak

SPECIFICATIONS

Dimensions	11.30 x 3.65 x 1.00 (m)	Builder	P. de Valk - Franeker
Built	1993	Cabins	1
Material	Steel	Berths	4
Engine(s)	1 x Ford Lehman 2723 E diesel	Hp/Kw	105.00 (hp), 77.18 (kw)
Asking price	sold (VAT)	Lying	at sales office

CONTACT

Sales office	De Valk Loosdrecht B.V.	Telephone	+31 (0)35 582 90 30
Address	't Breukeleveense Meentje 6 1231LM Loosdrecht / Wijdmeren NL	E-mail	loosdrecht@devalk.nl

DISCLAIMER

These particulars are given in good faith as supplied but cannot be guaranteed.



GENERAL

Model	VALKVLET 1130
Type	motor yacht
LOA (m)	11,30
Beam (m)	3,65
Draft (m)	1,00
Air draft (m)	2,50
Headroom (m)	1,95
Year built	1993
Builder	P. de Valk - Franeker
Country	The Netherlands
Designer	TH. Gillissen
Displacement (t)	11
Hull material	steel
Hull colour	blue
Hull shape	roundbilged
Superstructure material	steel
Rubbing strake	fender rope
Deck material	steel
Deck finish	teak
Superstructure deck finish	teak
Cockpit deck finish	teak
Dorades	yes
Window frame	aluminium
Window material	tempered glass
Portholes	yes
Insulation	foam plates
Radar arch	collapsible
Mast can be lowered	yes
Fuel tank (litre)	600L
Level indicator (fuel tank)	yes



Freshwater tank (litre)	450L
Level indicator (freshwater)	yes
Blackwater tank (litre)	yes
Wheel steering	hydraulic
Inside helm position	yes

ACCOMMODATION

Cabins	1
Berths	4
Interior	mahogany Classic
Floor	teak
Open cockpit	yes
Saloon	yes
Headroom saloon (m)	1,95
Heating	diesel ducted hot air Eberspächer
Galley	yes
Countertop	wood
Sink	stainless steel
Cooker	calor gas 4 burner Spinflo
Oven	DeLonghi
Gas alarm	yes
Fridge	with freezer compartment Isotherm (2011)
Hot water system	geyser on calorgas Rinnai
Water pressure system	electrical
Owners cabin	double bed
Wardrobe	hanging and drawers
Bathroom	en suite
Toilet	en suite
Toilet system	electric
Wash basin	in the bathroom
Shower	en suite



MACHINERY

No of engines	1
Make	Ford Lehman
Type	2723 E
HP	105,00
kW	77,18
Fuel	diesel
Engine hours	802
Engine cooling system	freshwater heat exchanger
Drive	shaft
Engine controls	mechanical Vetus
Bowthruster	electric
Electric bilge pump	yes
Electrical installation	24V/230V
Start battery	2011 installed
Service battery	2013 installed
Battery monitor	yes
Battery charger	Victron Skylla 24V/25A
Solar panel	2x installed in 2012
Shorepower	yes

NAVIGATION

Compass	VDO logic
Depth sounder	VDO logic
Log	VDO logic
VHF	Raymarine Ray 240E
Autopilot	Robertson AP2500
Rudder angle indicator	VDO
GPS	Garmin GPS 27



EQUIPMENT

Sprayhood	2012
Cockpit cover	2012
Cockpit cushions	yes
Cockpit chairs	yes
Boarding ladder	stainless steel With teak
Gangway	Wood
Anchor	yes
Anchor chain	yes
Windlass	Lofrans
Sea railing	yes
Wiper	yes
Clearview window	yes
Radio-cd player	Alpine
Speakers in salon	yes



VALKVLET 1130



VALKVLET 1130

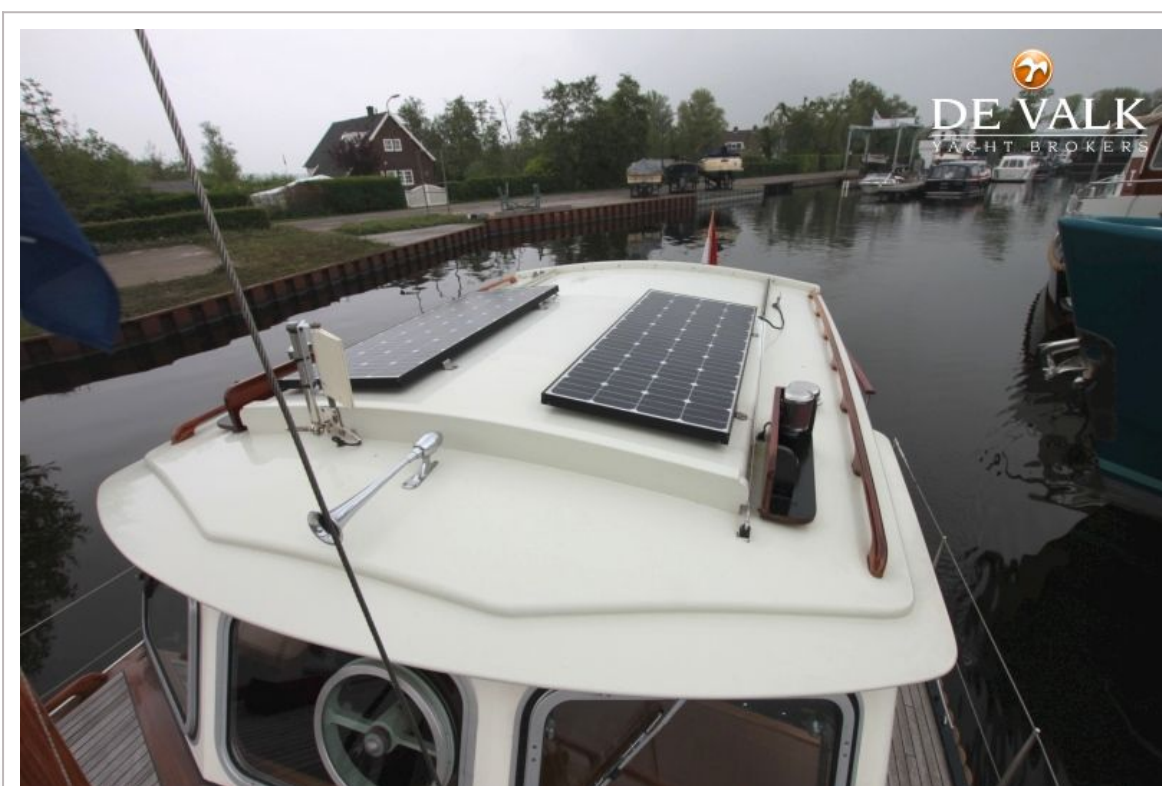


VALKVLET 1130





VALKVLET 1130



VALKVLET 1130



VALKVLET 1130



VALKVLET 1130

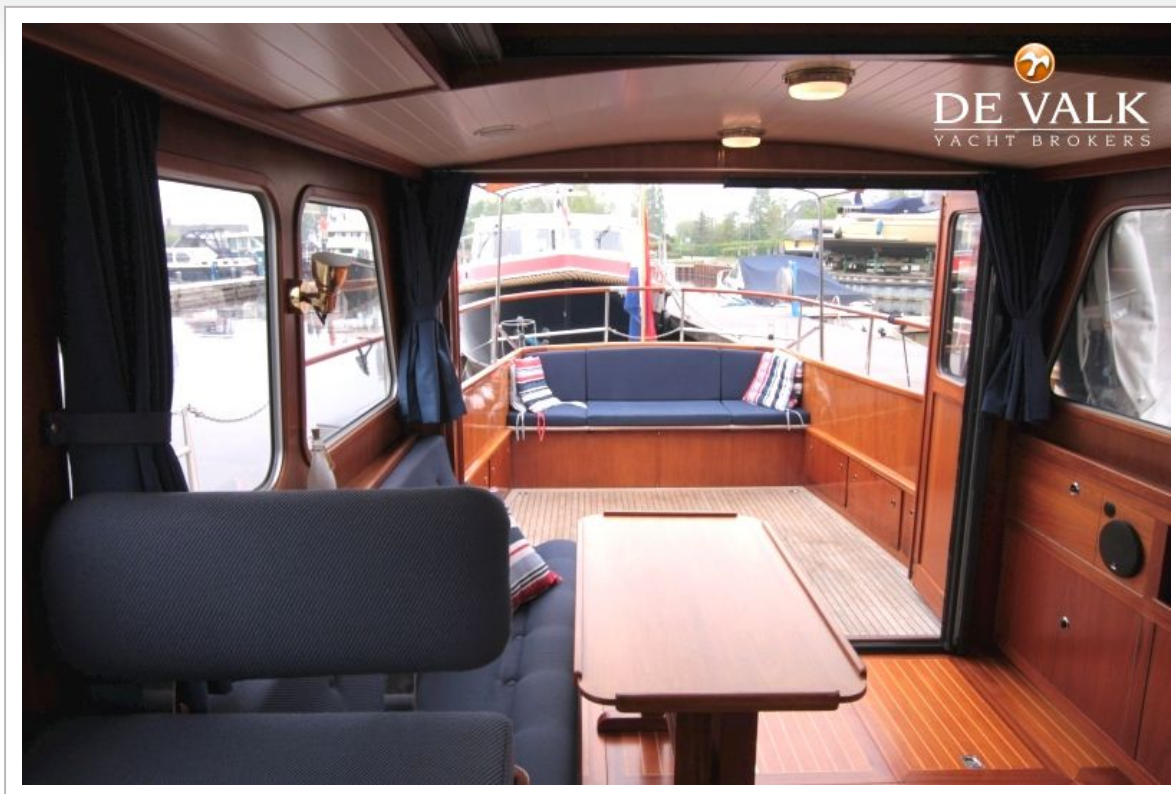




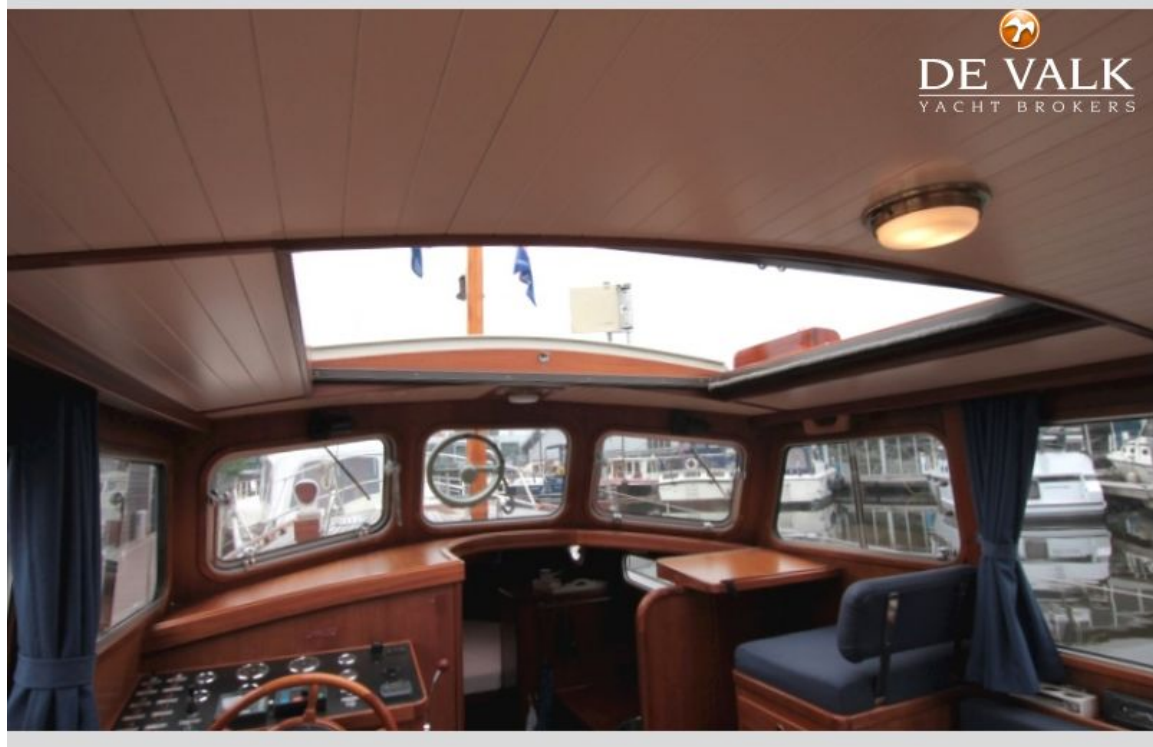
VALKVLET 1130



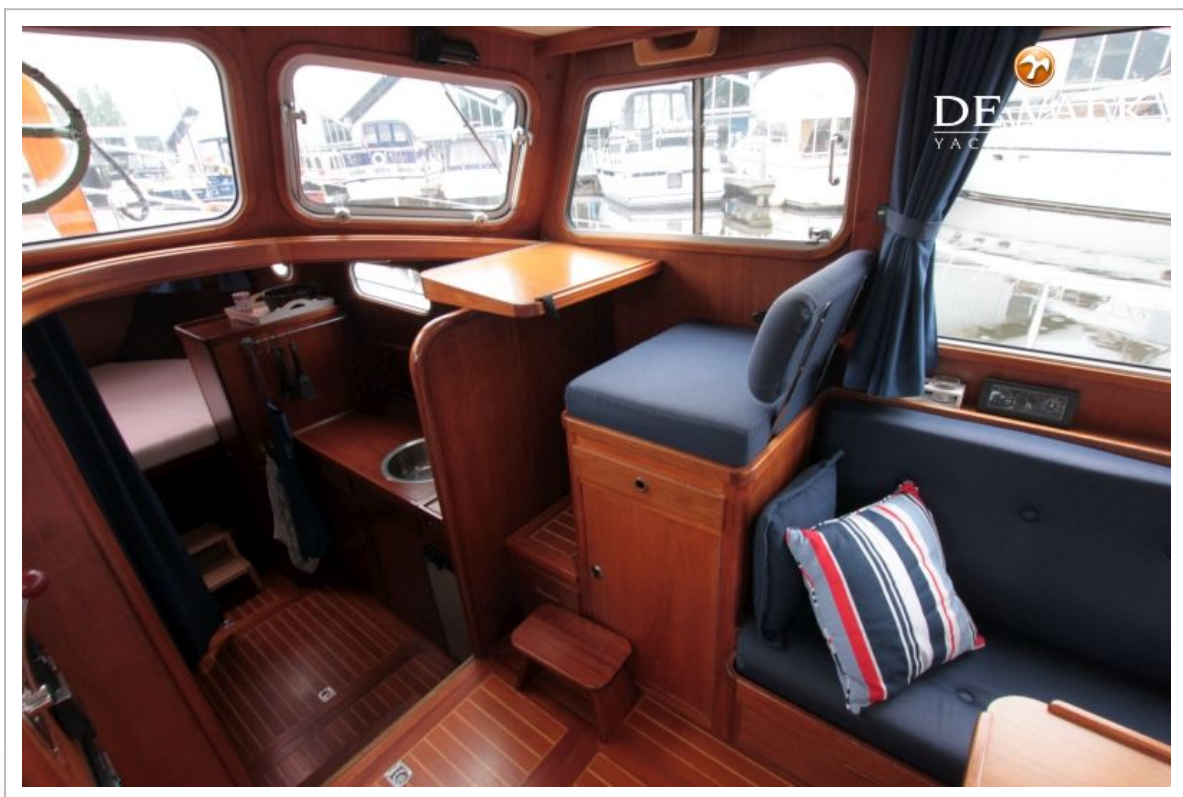
VALKVLET 1130



VALKVLET 1130



VALKVLET 1130



VALKVLET 1130

