



DE VALK
YACHT BROKERS



JETTEN 37 AC-RC



DE VALK
YACHT BROKERS

BROKER'S COMMENTS

The Jetten 37 AC is due to the combination of its dimensions and her spacious interior a popular yacht. The "Buly 1060 " has a modern design and is built to high standards. With this nice looking 37 AC-RC, Jetten Yachting has again shown its class. This Buly is fitted with an electric bow- and sternthruster, the masterbedroom has a French bed for all comfort. The Buly is offered in an excellent condition. Inspection is possible on appointment.

Peter van Diggele

SPECIFICATIONS

Dimensions	11.10 x 3.80 x 1.00 (m)	Builder	Jetten
Built	2008	Cabins	1
Material	Steel	Berths	5
Engine(s)	1 x Yanmar 4JH4G-HTBE diesel	Hp/Kw	110.00 (hp), 80.85 (kw)
Asking price	sold (VAT)	Lying	elsewhere / Not at sales office

CONTACT

Sales office	De Valk Loosdrecht B.V.	Telephone	+31 (0)35 582 90 30
Address	't Breukeleveense Meentje 6 1231LM Loosdrecht / Wijdmeren NL	E-mail	loosdrecht@devalk.nl

DISCLAIMER

These particulars are given in good faith as supplied but cannot be guaranteed.



GENERAL

Model	JETTEN 37 AC-RC
Type	motor yacht
LOA (m)	11,10
Beam (m)	3,80
Draft (m)	1,00
Air draft (m)	2,50
Year built	2008
Builder	Jetten
Country	The Netherlands
Displacement (t)	11
Hull material	steel
Hull colour	off-white
Hull thickness (mm)	5
Hull shape	hard chine
Superstructure material	steel
Superstructure (mm)	5
Deck plate thickness (mm)	5
Rubbing strake	fender rope
Deck material	steel
Deck finish	anti-slip paint
Dorades	Stainless steel
Window frame	aluminium
Window material	glass
Portholes	aluminium
Mast can be lowered	manual
Fuel tank (litre)	stainless steel 500
Freshwater tank (litre)	400
Blackwater tank (litre)	steel 150
Wheel steering	hydraulic
Outside helm position	hydraulic



Emergency tiller yes

ACCOMMODATION

Cabins	1
Berths	5
Interior	mahogany
Layout	round settee
Floor	teak and holly
Aft deck	yes
Saloon	yes
Headroom saloon (m)	2,00
Heating	diesel ducted hot air Eberspacher 4000
Aft Cabin	yes
Dinette to convert into berth	yes
Opening door to aft deck	yes
Galley	yes
Countertop	yes
Sink	stainless steel
Cooker	calor gas Smev
Oven	yes
Microwave	yes
Fridge	with freezer compartment 130 L.
Hot water system	220V + engine
Water pressure system	electrical
Owners cabin	French bed
Bed length (m)	1.90
Wardrobe	hanging and drawers
Bathroom	yes
Toilet	en suite
Toilet system	manual
Wash basin	at the toilet



Shower	en suite
Washing machine	Candy

MACHINERY

No of engines	1
Make	Yanmar
Type	4JH4G-HTBE
HP	110,00
kW	80,85
Fuel	diesel
Year installed	2008
Maximum speed (kn)	9
Cruising speed (kn)	6
Consumption (l/hr)	4
Engine hours	1200
Engine cooling system	freshwater heat exchanger
Drive	shaft
Engine controls	bowden cable
Gearbox	mechanical
Bowthruster	electric Vetus 75 kgf
Sternthruster	electric Vetus 75 kgf
Exhaust	watercooled
Thrust bearing	yes
Propeller type	fixed
Propeller blades	4
Propeller shaft material	stainless steel
Shaft lubrication	water
Manual bilge pump	yes
Electric bilge pump	yes
Electrical installation	12/220 Volt
Start battery	1x 90 Ah.



Service battery	2x 230 Ah.
Bowthruster battery	yes
Sternthruster battery	yes
Battery charger/inverter	Mastervolt 2000 W.
Shorepower	with cable

NAVIGATION

Depth sounder	Raymarine ST 40
Log	Raymarine ST 40
Rudder angle indicator	VDO
Personal computer	yes

EQUIPMENT

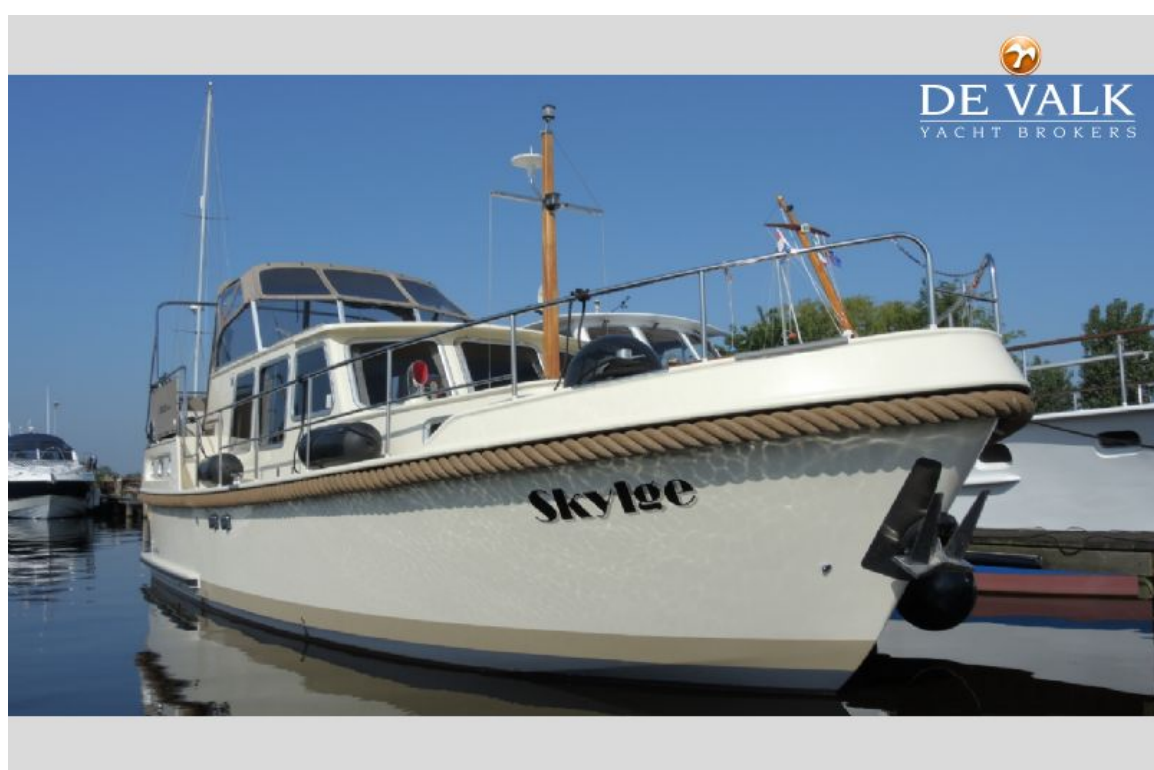
Cockpit cover	yes
Bimini	yes
Winter cover	yes
Bathing platform	yes
Boarding ladder	stainless steel
Deck shower	yes
Anchor	Pool 20 kg
Anchor chain	30 m.
Windlass	manual
Sea railing	stainless steel
Grab rail (superstructure)	stainless steel
Railing side opening gates	yes
Lifebuoy	yes
Wiper	yes
Horn	electric
Fenders	yes
Mooring lines	yes
TV	Sony LCD



TV receiver	yes
Radio-cd player	+ remote control
iPod connection	yes
Cockpit speakers	yes
Speakers in salon	yes



JETTEN 37 AC-RC



JETTEN 37 AC-RC



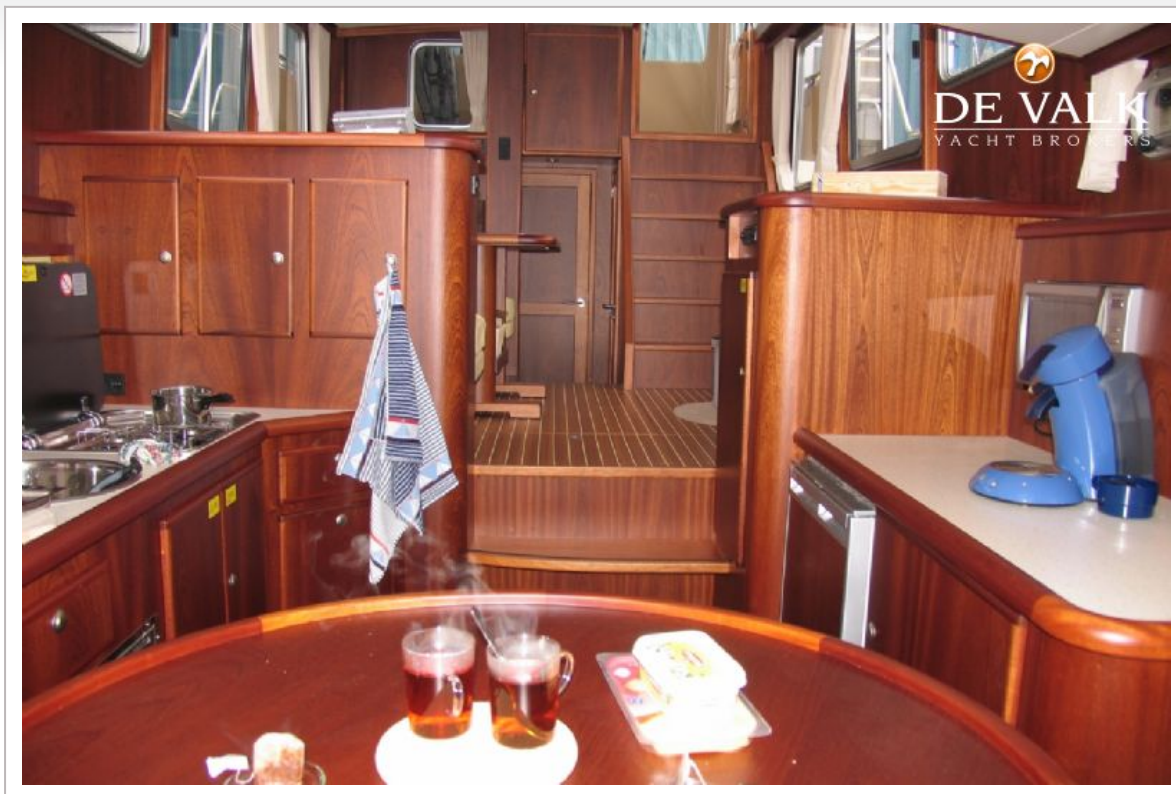
JETTEN 37 AC-RC



JETTEN 37 AC-RC



JETTEN 37 AC-RC



JETTEN 37 AC-RC

