



DE VALK  
YACHT BROKERS



HANSE 470



DE VALK  
YACHT BROKERS

## BROKER'S COMMENTS

This beautiful Hanse 470 is in good condition and comes well equipped. Sizable and safe cockpit and rigged for short handed sailing with electric winches and self tacking jib and retractable bowthruster, plus a more powerful engine. The performance matches the modern design features and a joy at the helm. The popular layout with centerline double berth forward and twin double aft. Ideal for (performance) cruising with family and friends. Private ownership, no charter.

*Stef Struijk*

## SPECIFICATIONS

<b>Dimensions</b>	14.31 x 4.46 x 2.35 (m)	<b>Builder</b>	Hanse Yachts
<b>Built</b>	2011	<b>Cabins</b>	3
<b>Material</b>	GRP	<b>Berths</b>	6
<b>Engine(s)</b>	1 x Yanmar JH4-TE diesel	<b>Hp/Kw</b>	75.00 (hp), 55.13 (kw)
<b>Asking price</b>	sold (VAT )	<b>Lying</b>	at sales office

## CONTACT

<b>Sales office</b>	De Valk Sint Annaland	<b>Telephone</b>	+31 166 601 000
<b>Address</b>	Koelhuisweg 4 4697 RM Sint Annaland The Netherlands	<b>E-mail</b>	sintannaland@devalk.nl

## DISCLAIMER

These particulars are given in good faith as supplied but cannot be guaranteed.



## GENERAL

<b>Model</b>	HANSE 470
<b>Type</b>	sailing yacht
<b>LOA (m)</b>	14,31
<b>LWL (m)</b>	12,60
<b>Beam (m)</b>	4,46
<b>Draft (m)</b>	2,35
<b>Air draft (m)</b>	24,43
<b>Headroom (m)</b>	1,96
<b>Year built</b>	2011
<b>Builder</b>	Hanse Yachts
<b>Country</b>	Germany
<b>Designer</b>	Judel & Vrolijk
<b>Displacement (t)</b>	12,2
<b>Ballast (tonnes)</b>	3,55
<b>CE norm</b>	A
<b>Hull material</b>	GRP
<b>Hull colour</b>	grey
<b>Hull shape</b>	round-bilged
<b>Keel type</b>	bulb keel
<b>Superstructure material</b>	GRP
<b>Deck material</b>	GRP
<b>Deck finish</b>	teak
<b>Cockpit deck finish</b>	teak
<b>Antifouling (year)</b>	2015
<b>Window material</b>	polycarbonate
<b>Deckhatch</b>	flush mounted
<b>Portholes</b>	aluminium
<b>Fuel tank (litre)</b>	polyethylene 250
<b>Level indicator (fuel tank)</b>	yes
<b>Freshwater tank (litre)</b>	polyethylene 380



<b>Blackwater tank (litre)</b>	polyethylene 2 x 30
<b>Level indicator (blackwater)</b>	yes
<b>Blackwater tank extraction</b>	deck extraction
<b>Wheel steering</b>	mechanical Jefa twin
<b>Emergency tiller</b>	yes
<b>More info on hull</b>	yes

## ACCOMMODATION

<b>Cabins</b>	3
<b>Berths</b>	6
<b>Interior</b>	Ohio Cherry wood interior
<b>Floor</b>	Limber maple wood
<b>Saloon</b>	with L-shaped settee
<b>Headroom saloon (m)</b>	1,96
<b>Heating</b>	Eberspächer Airtronic D64
<b>Chart table</b>	yes
<b>Dinette</b>	yes
<b>Galley</b>	yes
<b>Countertop</b>	corian
<b>Sink</b>	stainless steel 2 x
<b>Cooker</b>	calor gas 3 burner
<b>Oven</b>	yes
<b>Microwave</b>	Miele combi
<b>Fridge</b>	Isotherm
<b>Freezer</b>	Isotherm
<b>Hot water system</b>	220V + engine Boiler
<b>Water pressure system</b>	electrical
<b>Owners cabin</b>	French bed Forward / voor / vorne
<b>Bed length (m)</b>	2,00 x 1,46
<b>Wardrobe</b>	hanging/drawers/shelves
<b>Bathroom</b>	en suite I



Toilet	en suite
Toilet system	manual
Wash basin	in the bathroom
Shower	en suite
Guest cabin 1	double bed
Bed length (m)	1,98 x 1,50
Wardrobe	shelves and hanging
Bathroom	shared II
Toilet	shared
Toilet system	manual
Wash basin	in the bathroom
Shower	shared
Guest cabin 2	double bed
Bed length (m)	2,00 x 1,50
Wardrobe	shelves and hanging

## MACHINERY

No of engines	1
Make	Yanmar
Type	JH4-TE
HP	75,00
kW	55,13
Fuel	diesel
Year installed	2010
Maximum speed (kn)	8
Cruising speed (kn)	7
Consumption (l/hr)	4,5
Engine hours	633
Engine cooling system	freshwater heat exchanger
Drive	sail-drive
Engine controls	bowden cable



# HANSE 470

<b>Gearbox</b>	mechanical
<b>Bowthruster</b>	electric RMC Swingthruster
<b>Propeller type</b>	fixed
<b>Propeller blades</b>	3
<b>Manual bilge pump</b>	yes
<b>Electric bilge pump</b>	yes
<b>Electrical installation</b>	12/220v
<b>Batteries</b>	yes
<b>Start battery</b>	1x 12V/90Ah Victron gel
<b>Service battery</b>	2x 12V/180Ah (2015)
<b>Bowthruster battery</b>	2x 12V
<b>Battery monitor</b>	At navigation table
<b>Battery charger/inverter</b>	Victron 12v/75amp/1600 watt
<b>Shorepower</b>	with cable

## NAVIGATION

<b>Compass</b>	Contest Plastimo 130
<b>Depth sounder</b>	2x Simrad IS20
<b>Log</b>	2x Simrad IS20
<b>Windset</b>	2x Simrad IS20
<b>VHF</b>	Simrad RS82
<b>Autopilot</b>	Simrad AP24
<b>GPS</b>	Simrad NSE8
<b>Plotter</b>	Simrad NSE8

## EQUIPMENT

<b>Sprayhood</b>	Light grey
<b>Bimini</b>	Light grey
<b>Cockpit cushions</b>	yes
<b>Cockpit table</b>	yes
<b>Bathing platform</b>	fold-away wiith 2nd boarding ladder



<b>Boarding ladder</b>	stainless steel
<b>Deck shower</b>	yes
<b>Anchor</b>	Delta 25Kg
<b>Anchor chain</b>	60 meter RVS
<b>Windlass</b>	electrical Lewmar
<b>Sea railing</b>	stainless steel
<b>Railing side opening gates</b>	2x
<b>Pushpit</b>	yes
<b>Pulpit</b>	yes
<b>Lifebuoy</b>	1 x
<b>Fenders</b>	yes
<b>Mooring lines</b>	yes
<b>Fire extinguisher</b>	yes

## RIGGING

<b>Rigging</b>	fractional
<b>Brand mast</b>	Selden
<b>Material mast</b>	aluminium
<b>Spreaders</b>	3x
<b>Keel stepped mast</b>	yes
<b>Mainsail cover</b>	Main Drop System
<b>Battcars</b>	yes
<b>Fully battened mainsail</b>	67,50m <sup>2</sup> North Sails
<b>Jib</b>	48,30m <sup>2</sup> North Sails self tacking
<b>Genoa furler</b>	flush deck mounted
<b>Gennaker</b>	186m <sup>2</sup> Code G selfrolling
<b>Self tacking jib installation</b>	yes
<b>Reefing System</b>	quick-one-line-reefing
<b>Backstay adjuster</b>	mechanical Seldén
<b>Boomvang</b>	Seldén Rodkicker
<b>Primary sheet winch</b>	electric 2 x Lewmar 54STE



Spinnaker winch

2 x Lewmar 46ST





# HANSE 470



# HANSE 470



# HANSE 470



# HANSE 470



# HANSE 470



# HANSE 470



# HANSE 470



# HANSE 470





# HANSE 470



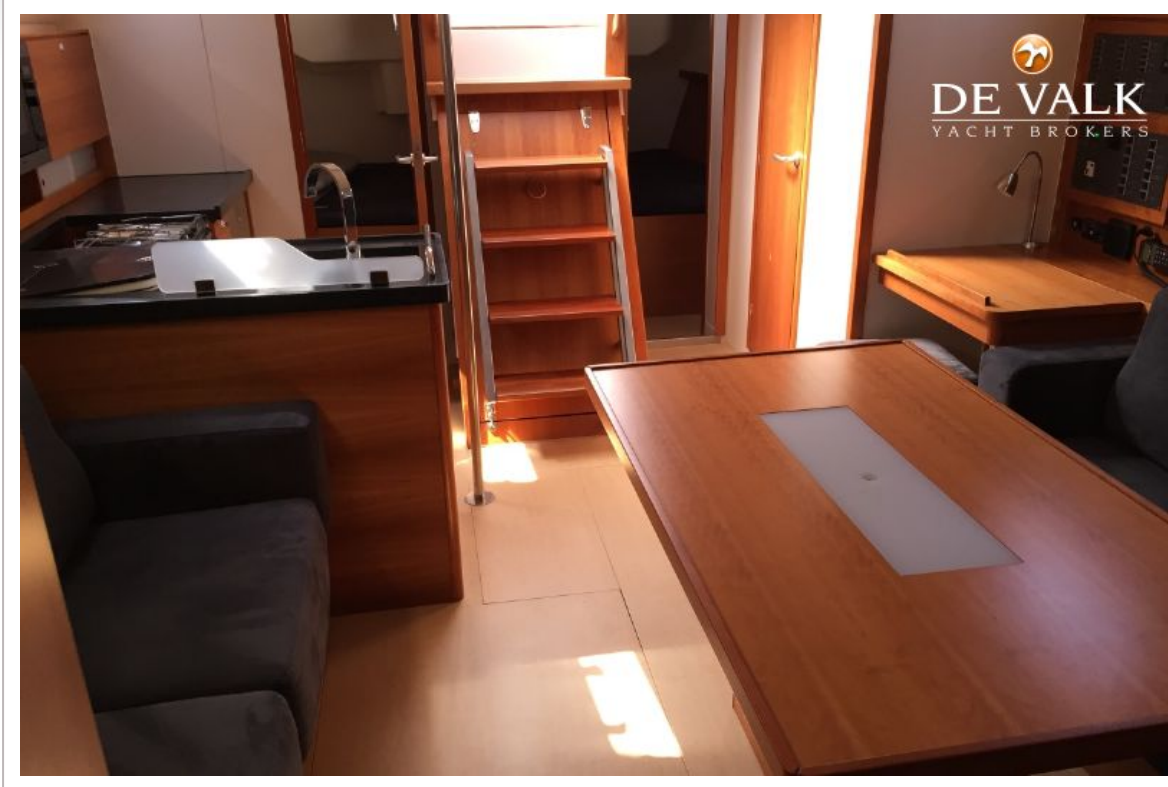
# HANSE 470



# HANSE 470



# HANSE 470



# HANSE 470



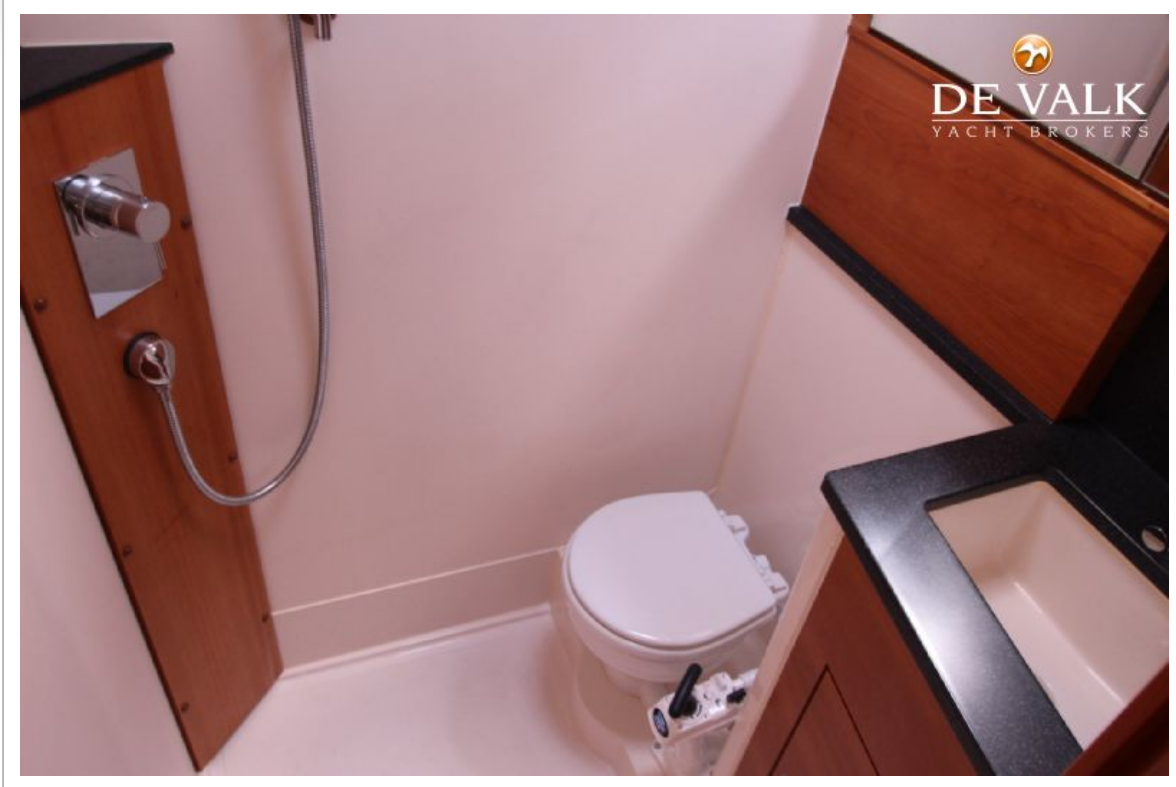
# HANSE 470



# HANSE 470



# HANSE 470





# HANSE 470



# HANSE 470



# HANSE 470

