



DE VALK  
YACHT BROKERS



## FUNCRAFT 1300



DE VALK  
YACHT BROKERS

## BROKER'S COMMENTS

Familycruiser with cherry wood interior. Roomy ownerscabin with French bed, seperate shower and toilet facilities. Guestcabin with two single berths and a lot of storage room. Very spacious livingroom with a well equiped kitchen.

*Arjen Hoeksma*

## SPECIFICATIONS

|                     |                         |                |                          |
|---------------------|-------------------------|----------------|--------------------------|
| <b>Dimensions</b>   | 13.00 x 4.20 x 1.40 (m) | <b>Builder</b> | Funcraft                 |
| <b>Built</b>        | 1995                    | <b>Cabins</b>  | 2                        |
| <b>Material</b>     | Steel                   | <b>Berths</b>  | 4                        |
| <b>Engine(s)</b>    | 1 x DAF 615 6 cylinder  | <b>Hp/Kw</b>   | 140.00 (hp), 102.90 (kw) |
| <b>Asking price</b> | sold (VAT )             | <b>Lying</b>   | at sales office          |

## CONTACT

|                     |  |                  |                      |
|---------------------|--|------------------|----------------------|
| <b>Sales office</b> | De Valk Loosdrecht B.V.  | <b>Telephone</b> | +31 (0)35 582 90 30  |
| <b>Address</b>      | 't Breukeleveense Meentje 6<br>1231LM Loosdrecht / Wijdmeren<br>NL | <b>E-mail</b>    | loosdrecht@devalk.nl |

## DISCLAIMER

These particulars are given in good faith as supplied but cannot be guaranteed.



## GENERAL

|                              |                 |
|------------------------------|-----------------|
| Model                        | FUNCRAFT 1300   |
| Type                         | motor yacht     |
| LOA (m)                      | 13,00           |
| Beam (m)                     | 4,20            |
| Draft (m)                    | 1,40            |
| Year built                   | 1995            |
| Builder                      | Funcraft        |
| Country                      | The Netherlands |
| Displacement (t)             | 15              |
| Hull material                | steel           |
| Hull shape                   | hard chine      |
| Superstructure material      | steel           |
| Deck material                | steel           |
| Deck finish                  | anti-slip paint |
| Cockpit deck finish          | anti-slip paint |
| Dorades                      | Vetus           |
| Window frame                 | aluminium       |
| Window material              | perspex         |
| Radar arch                   | collapsible     |
| Fuel tank (litre)            | 750             |
| Level indicator (fuel tank)  | Vetus           |
| Freshwater tank (litre)      | 600             |
| Level indicator (freshwater) | Vetus           |
| Wheel steering               | hydraulic       |
| Outside helm position        | yes             |

## ACCOMMODATION

|          |                           |
|----------|---------------------------|
| Cabins   | 2                         |
| Berths   | 4                         |
| Interior | birch Spacious livingroom |



# FUNCRAFT 1300

|                       |                                |
|-----------------------|--------------------------------|
| Floor                 | carpet                         |
| Aft deck              | yes                            |
| Saloon                | yes                            |
| Heating               | central heating Kabola B12 Tap |
| Dinette               | U shaped                       |
| Galley                | yes                            |
| Countertop            | plastic                        |
| Sink                  | stainless steel                |
| Cooker                | calor gas 4 burner             |
| Oven                  | Steba                          |
| Gas alarm             | yes                            |
| Microwave             | Delonghi                       |
| Fridge                | with freezer compartment Etna  |
| Hot water system      | Boiler                         |
| Water pressure system | electrical                     |
| Owners cabin          | French bed                     |
| Wardrobe              | hanging/drawers/shelves        |
| Bathroom              | separate                       |
| Toilet                | separate                       |
| Toilet system         | electric                       |
| Wash basin            | in the bathroom                |
| Shower                | en suite                       |
| Guest cabin 1         | twin single                    |
| Wardrobe              | shelves and hanging            |

## MACHINERY

|               |                |
|---------------|----------------|
| No of engines | 1              |
| Make          | DAF            |
| Type          | 615 6 cylinder |
| HP            | 140,00         |
| kW            | 102,90         |



|                     |                              |
|---------------------|------------------------------|
| Cruising speed (kn) | 7                            |
| Consumption (l/hr)  | 5,5                          |
| Drive               | shaft                        |
| Engine controls     | electrical                   |
| Bowthruster         | electric                     |
| Sternthruster       | electric                     |
| Batteries           | 6 x 230A Heavy Duty          |
| Battery monitor     | yes                          |
| Battery charger     | yes                          |
| Inverter            | Vetus BCC 200 24V/220V 2500W |
| Shorepower          | with cable                   |

## NAVIGATION

|               |             |
|---------------|-------------|
| Compass       | Quicksilver |
| Depth sounder | Nasa Marine |

## EQUIPMENT

|                   |                  |
|-------------------|------------------|
| Fixed windscreen  | yes              |
| Bathing platform  | yes              |
| Boarding ladder   | stainless steel  |
| Anchor            | yes              |
| Anchor chain      | yes              |
| Windlass          | electrical Vetus |
| Davits            | stainless steel  |
| Sea railing       | stainless steel  |
| Wiper             | yes              |
| Horn              | electric         |
| Fenders           | yes              |
| TV                | yes              |
| Radio-cd player   | Pioneer          |
| Speakers in cabin | yes              |



|                             |     |
|-----------------------------|-----|
| Fire extinguisher           | yes |
| Extinguisher in engine room | yes |



# FUNCRAFT 1300





# FUNCRAFT 1300





# FUNCRAFT 1300



# FUNCRAFT 1300



# FUNCRAFT 1300





# FUNCRAFT 1300



# FUNCRAFT 1300





# FUNCRAFT 1300



# FUNCRAFT 1300

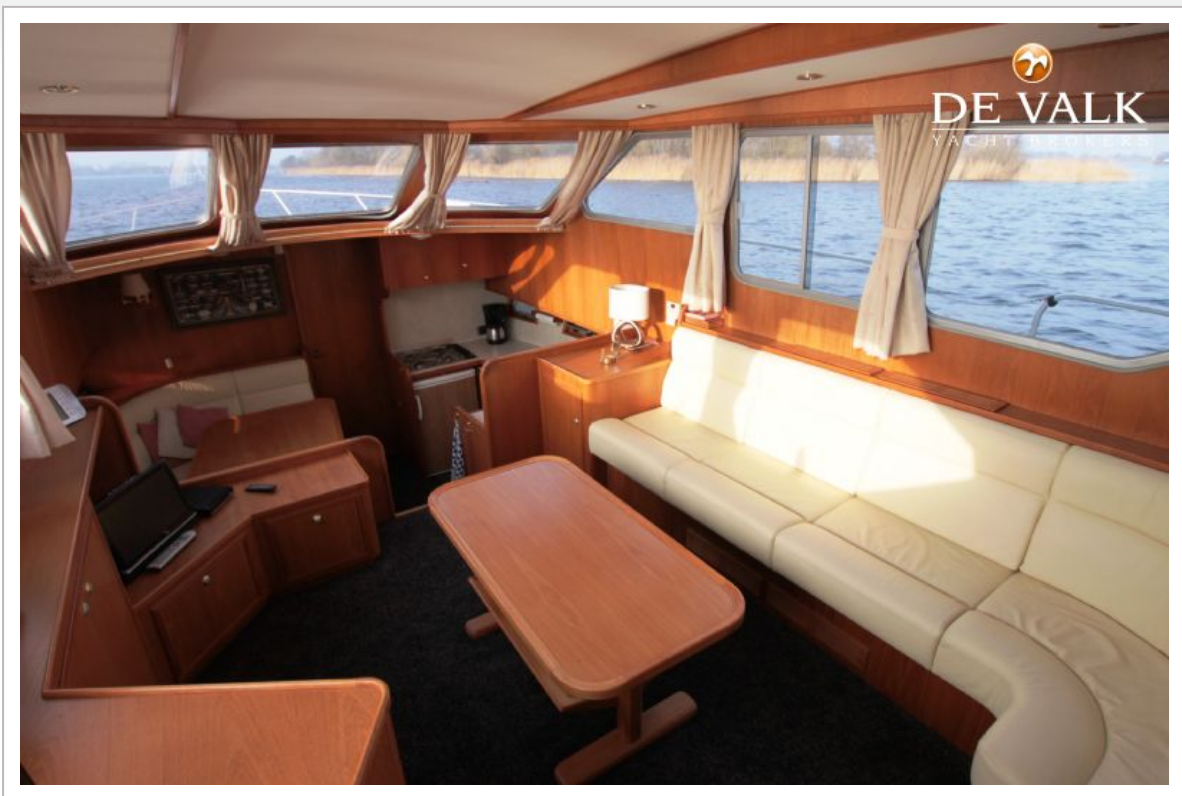




# FUNCRAFT 1300



# FUNCRAFT 1300





# FUNCRAFT 1300

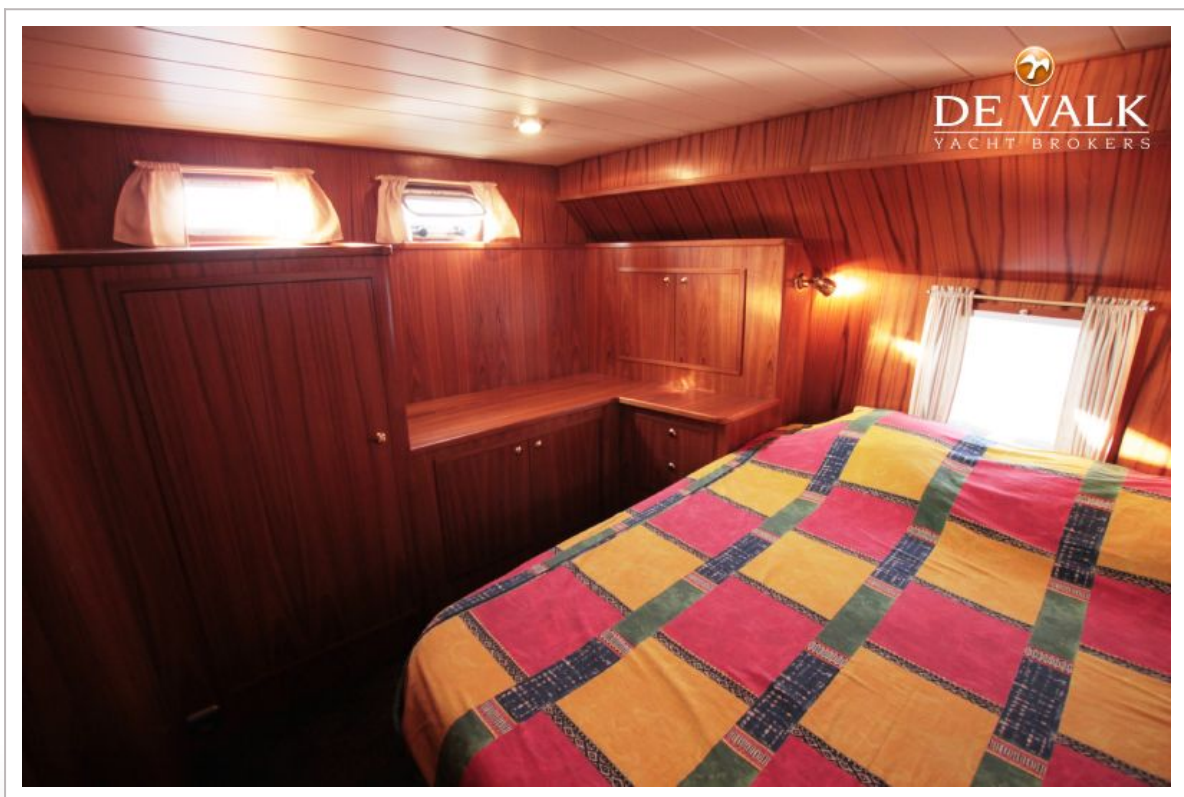




# FUNCRAFT 1300

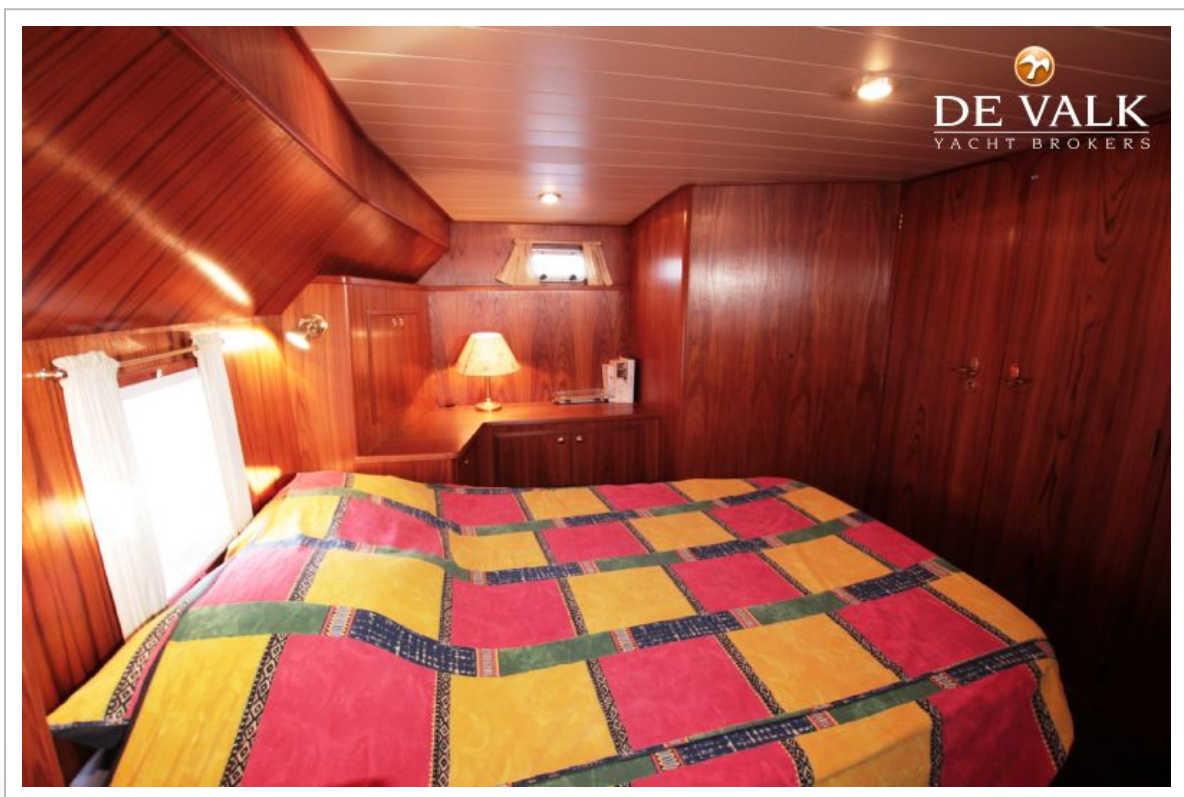
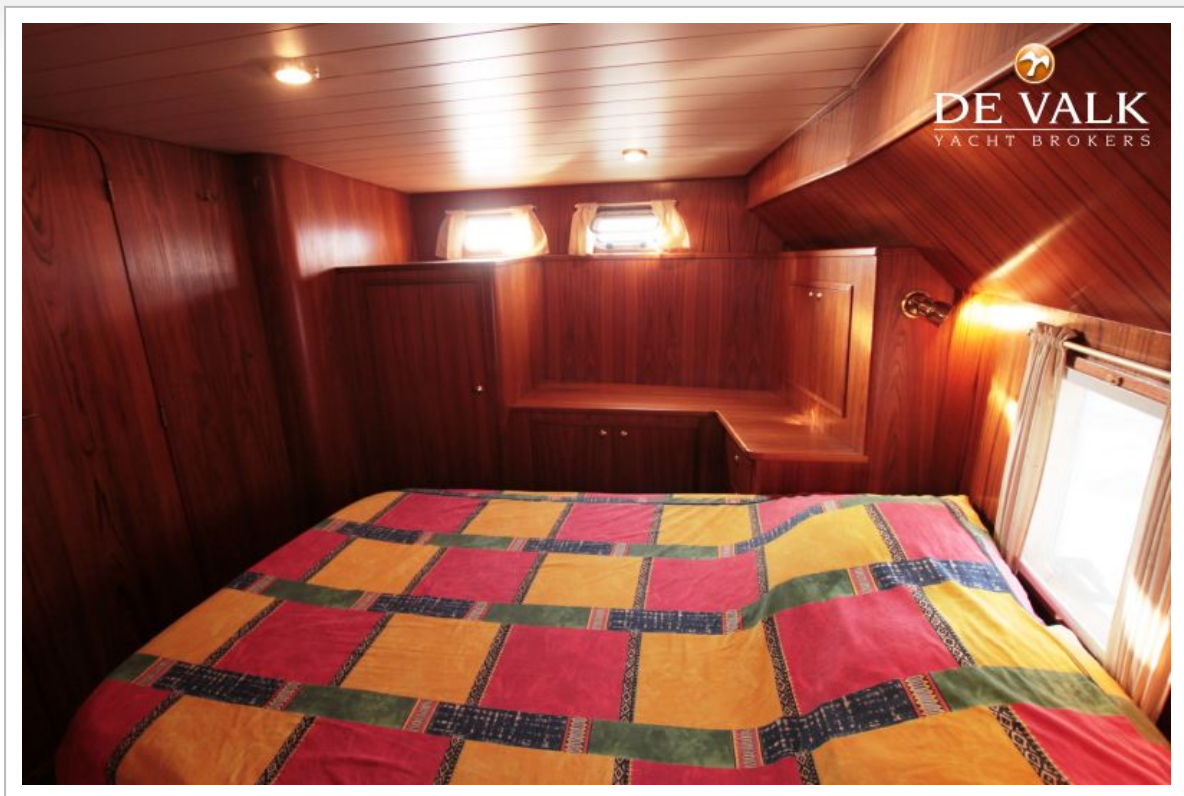


# FUNCRAFT 1300





# FUNCRAFT 1300

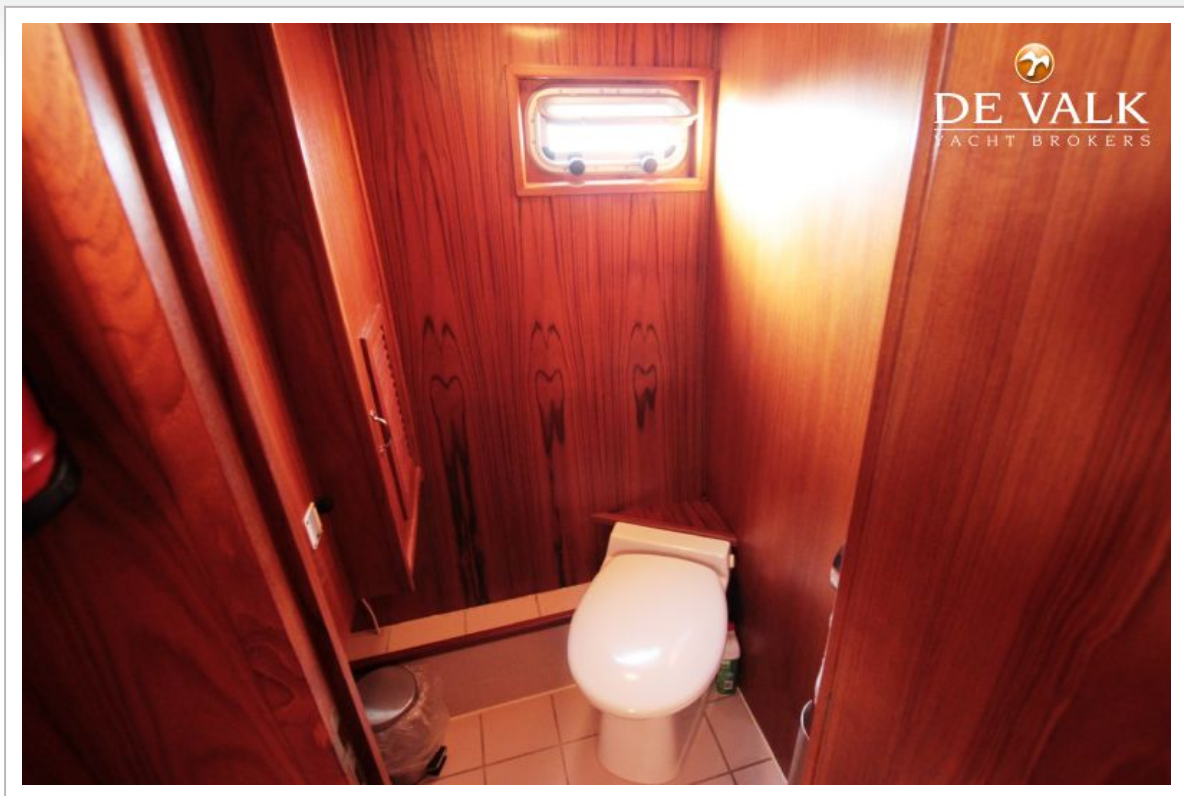


# FUNCRAFT 1300





# FUNCRAFT 1300





# FUNCRAFT 1300

