



DE VALK
YACHT BROKERS



VRIPACK 10.65 OK EXPLORER



DE VALK
YACHT BROKERS

VRIPACK 10.65 OK EXPLORER

BROKER'S COMMENTS

The Vripack Explorer OK 10.65 is a well known design from Vripack Naval Architects. This well maintained motor yacht has a large cockpit with full helm. The beautiful mahogany-paneled interior has a real ship character. The reliable Deutz provides the propulsion, bow and stern can be with mooring service. This well maintained yacht is from the first owner and lying at De Valk in Loosdrecht.

Peter van Diggele

SPECIFICATIONS

Dimensions	10.75 x 3.50 x 0.92 (m)	Builder	Van Huizen-Leeuwarden
Built	2003	Cabins	2
Material	Steel	Berths	4
Engine(s)	1 x Vetus Deutz DT 29 diesel	Hp/Kw	83.00 (hp), 61.01 (kw)
Asking price	sold (VAT)	Lying	at sales office

CONTACT

Sales office	De Valk Loosdrecht B.V.	Telephone	+31 (0)35 582 90 30
Address	't Breukeleveense Meentje 6 1231LM Loosdrecht / Wijdmeren NL	E-mail	loosdrecht@devalk.nl

DISCLAIMER

These particulars are given in good faith as supplied but cannot be guaranteed.



GENERAL

Model	VRIPACK 10.65 OK EXPLORER
Type	motor yacht
LOA (m)	10,75
LWL (m)	9,62
Beam (m)	3,50
Draft (m)	0,92
Air draft (m)	2,39
Headroom (m)	2,00
Year built	2003
Builder	Van Huizen-Leeuwarden
Country	The Netherlands
Designer	Vripack Yachting
Displacement (t)	9
CE norm	C
Hull material	steel
Hull colour	black
Hull thickness (mm)	5
Hull shape	hard chine
Superstructure material	steel
Superstructure (mm)	4
Rubbing strake	fender rope
Deck material	steel
Deck finish	anti-slip paint
Cockpit deck finish	teak
Window frame	aluminium
Window material	glass
Portholes	aluminium
Mast can be lowered	yes
Fuel tank (litre)	600
Freshwater tank (litre)	500



Greywater tank (litre)	100
Wheel steering	hydraulic
Inside helm position	yes
Outside helm position	hydraulic

ACCOMMODATION

Cabins	2
Berths	4
Interior	mahogany
Floor	teak and holly
Open cockpit	Teak deck
Saloon	yes
Headroom saloon (m)	2,00
Heating	diesel ducted hot air Eberspächer
Aft Cabin	yes
Opening door to cockpit	wood
Galley	yes
Countertop	yes
Sink	yes
Cooker	calor gas 4 burner
Oven	electric
Fridge	with freezer compartment Isotherm
Hot water system	yes
Water pressure system	electrical
Owners cabin	double bed
Wardrobe	hanging and drawers
Bathroom	separate
Toilet	en suite
Toilet system	electric
Wash basin	in the bathroom
Shower	en suite



Guest cabin 1	single bed 2x
Wardrobe	drawers

MACHINERY

No of engines	1
Make	Vetus Deutz
Type	DT 29
HP	83,00
kW	61,01
Fuel	diesel
Maximum speed (kn)	9
Cruising speed (kn)	6
Consumption (l/hr)	4
Engine hours	1480
Engine cooling system	freshwater heat exchanger
Drive	shaft
Engine controls	bowden cable
Gearbox	hydraulic
Bowthruster	electric Vetus
Sternthruster	electric Vetus
Propeller type	fixed 16x18
Propeller blades	3
Propeller shaft material	stainless steel 35 m/m
Shaft lubrication	water
Electric bilge pump	yes
Electrical installation	12/220 Volt
Battery monitor	Phoenix Multicontrol
Battery charger	Phoenix Multiplus
Solar panel	yes
Shorepower	yes



EQUIPMENT

Cockpit cover	yes
Cockpit cushions	yes
Boarding ladder	stainless steel
Anchor	yes
Windlass	Vetus
Davits	stainless steel
Davits controls	manual
Sea railing	stainless steel
Grab rail (superstructure)	stainless steel
Wiper	yes



VRIPACK 10.65 OK EXPLORER









VRIPACK 10.65 OK EXPLORER





VRIPACK 10.65 OK EXPLORER



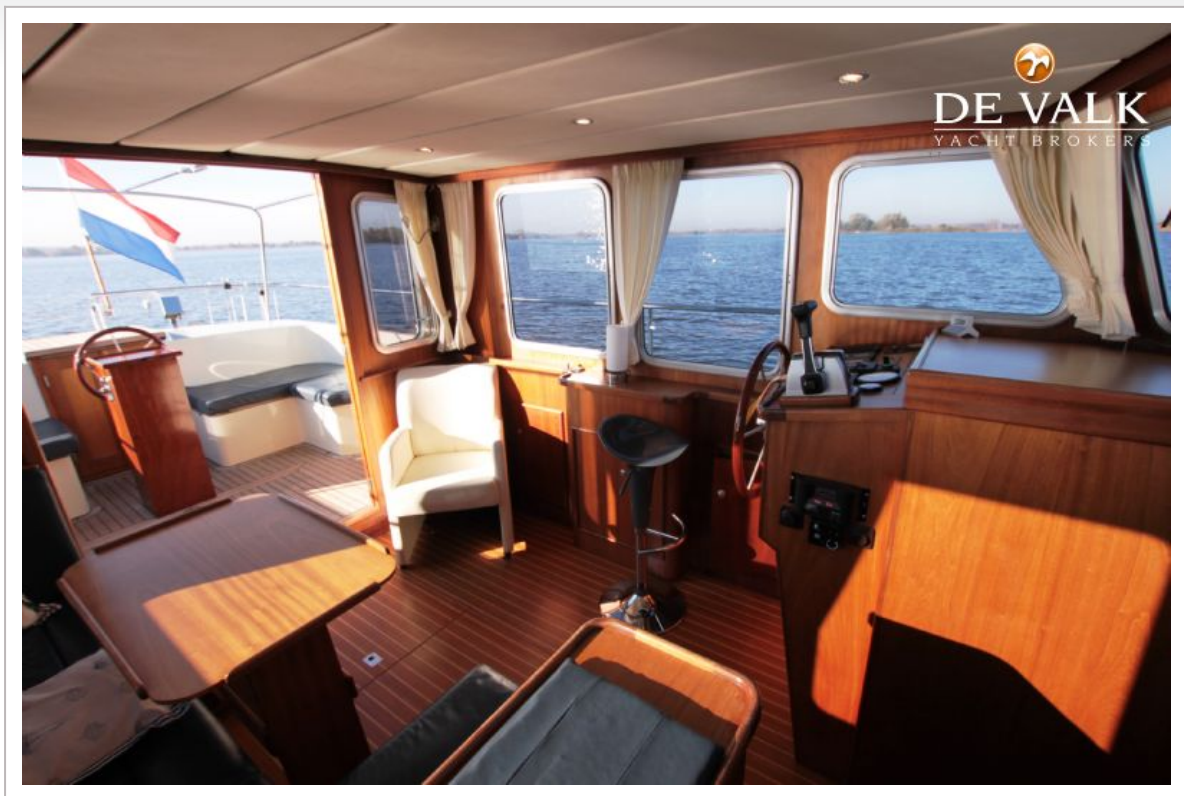
VRIPACK 10.65 OK EXPLORER



VRIPACK 10.65 OK EXPLORER



VRIPACK 10.65 OK EXPLORER



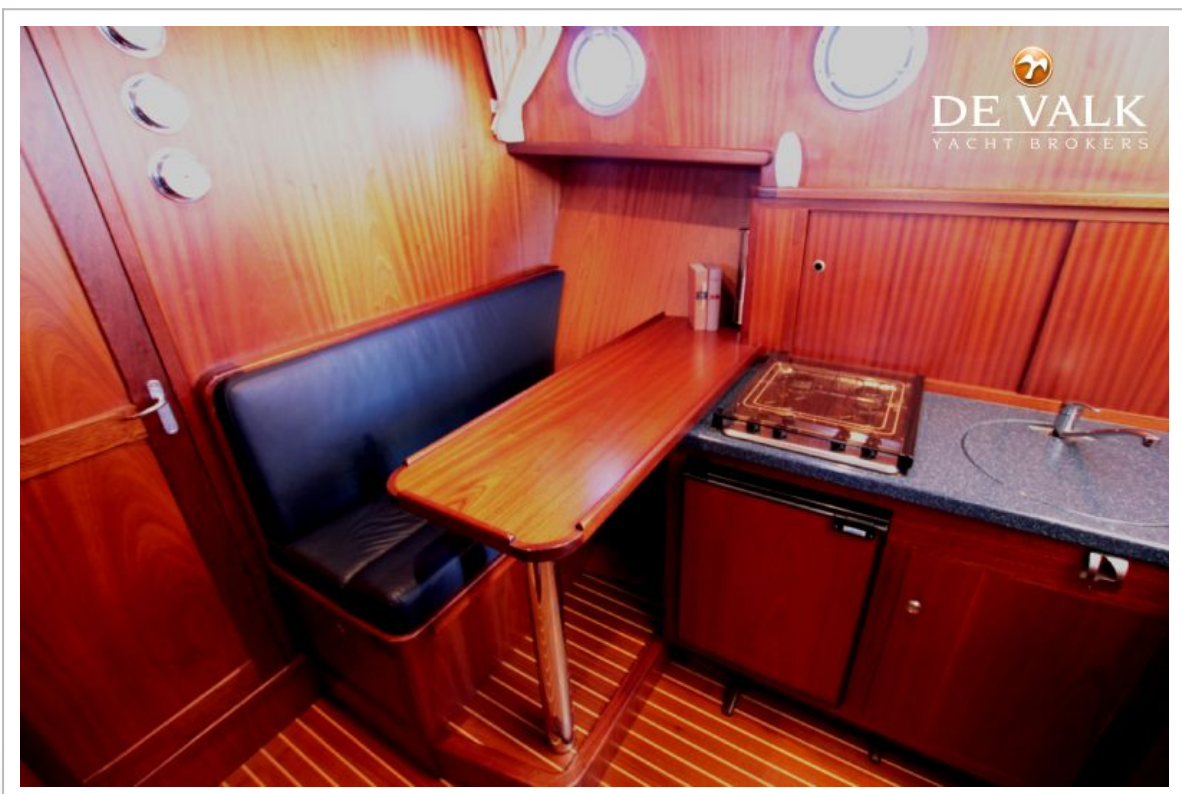
VRIPACK 10.65 OK EXPLORER

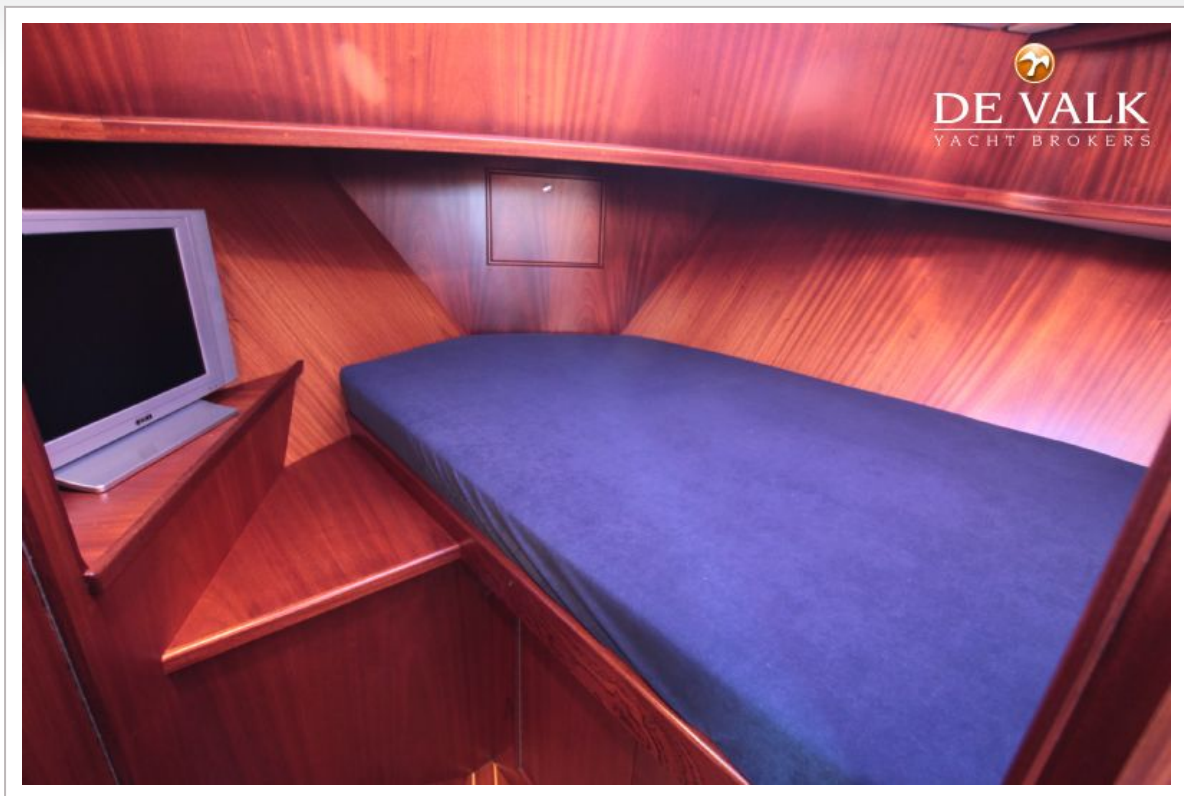


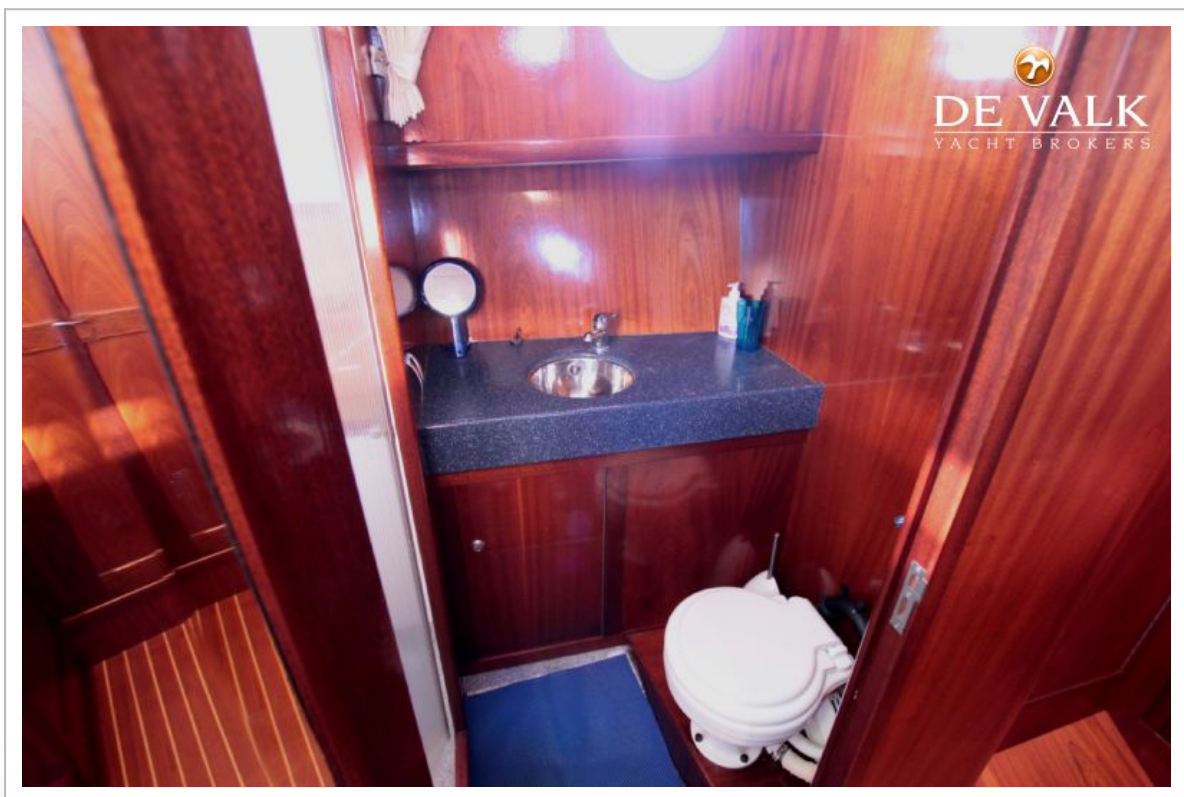
VRIPACK 10.65 OK EXPLORER



VRIPACK 10.65 OK EXPLORER



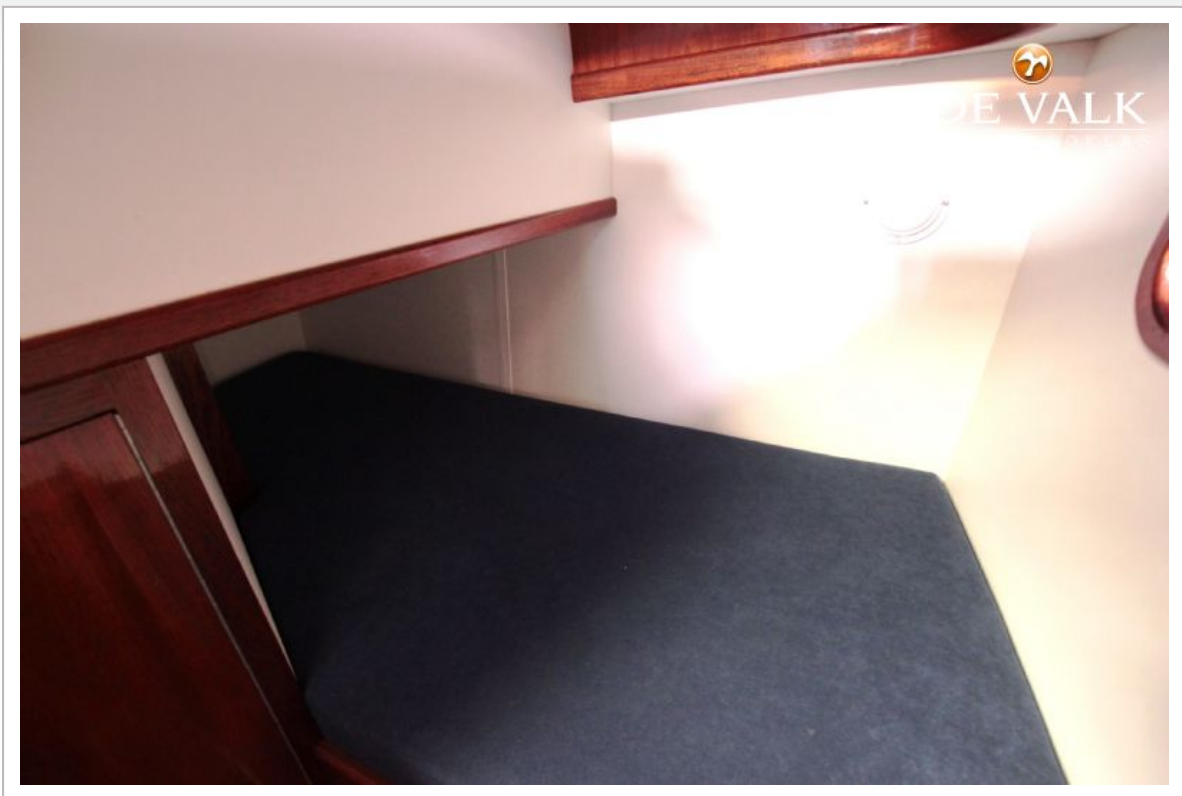




VRIPACK 10.65 OK EXPLORER







VRIPACK 10.65 OK EXPLORER

