



GILLISSEN KOTTER 1100

BROKER'S COMMENTS

The Gillissen (Bak Kotter) 1100 is build in 1974 by Bak in Broek op Langendijk. The 1100 is a sturdy ship, has beautiful lines, and will sail the bigger and smaller waters excellent. It's build very solid and in technical good condition. She will be auctioned on November 30th 2016 in cooperation with Schipveiling and BVA Auctions. For further details go to: <https://en.bva-auctions.com/auction/lot/22752> Starting price of the auction EUR. 20.000, offers can be made from November 23th 2016 on the website of BVA.

Arjen Hoeksma

SPECIFICATIONS

Dimensions	11.00 x 3.40 x 1.30 (m)	Builder	Bak - Broek op Langendijk
Built	1974	Cabins	2
Material	Steel	Berths	4
Engine(s)	1 x PERKINS	Hp/Kw	120.00 (hp), 88.20 (kw)
Asking price	sold (VAT)	Lying	at sales office

CONTACT

Sales office	De Valk Loosdrecht B.V.	Telephone	+31 (0)35 582 90 30
Address	't Breukeleveense Meentje 6 1231LM Loosdrecht / Wijdmeren NL	E-mail	loosdrecht@devalk.nl

DISCLAIMER

These particulars are given in good faith as supplied but cannot be guaranteed.



GENERAL

Model	GILLISSEN KOTTER 1100
Type	motor yacht
LOA (m)	11,00
Beam (m)	3,40
Draft (m)	1,30
Air draft (m)	2,70
Headroom (m)	1,95
Year built	1974
Builder	Bak - Broek op Langendijk
Country	The Netherlands
Hull material	steel
Hull colour	green
Superstructure material	stainless steel
Rubbing strake	stainless steel
Deck material	steel
Deck finish	teak
Dorades	yes
Window frame	aluminium
Window material	polycarbonate
Mast can be lowered	yes
Fuel tank (litre)	1200
Freshwater tank (litre)	800
Level indicator (freshwater)	yes
Wheel steering	hydraulic
Outside helm position	hydraulic

ACCOMMODATION

Cabins	2
Berths	4
Interior	teak



Floor	teak
Saloon	yes
Heating	diesel ducted hot air Eberspächer
Sliding door to cockpit	Port and starboard
Galley	incl crockery
Countertop	plastic
Sink	stainless steel
Cooker	calor gas Eno Mendoza, 2 burner
Extractor	yes
Fridge	with freezer compartment 60L
Water pressure system	electrical
Owners cabin	double bed
Wardrobe	hanging/drawers/shelves
Bathroom	en suite
Toilet	en suite
Wash basin	in the bathroom
Guest cabin 1	v-bed
Wardrobe	shelves

MACHINERY

No of engines	1
Make	PERKINS
HP	120,00
kW	88,20
Maximum speed (kn)	8
Cruising speed (kn)	6
Engine hours	3604 (10-3-2016)
Electric bilge pump	yes
Start battery	2 x 12Volt
Service battery	4x Zap 140Ah
Battery monitor	1 x 12V. sys., 1 x 24V. sys.



NAVIGATION

Compass	2 x electric Neco Ships head
Depth sounder	Ray Jefferson
VHF	Sailtron
Rudder angle indicator	yes
GPS	yes

EQUIPMENT

Anchor	yes
Anchor chain	yes
Windlass	yes
Sea railing	stainless steel
Grab rail (superstructure)	wood
Wiper	2x
Clearview window	yes
Horn	yes
Fenders	yes
Mooring lines	yes
TV	Sharp
Radio-cd player	yes
Clock - barometer	yes





**This yacht will be auctioned,
for further details please visit www.devalk.nl**

**Dit schip zal worden geveild,
voor meer informatie gaat u naar www.devalk.nl**

**Dieses Schiff wird versteigert,
für weitere informationen besuchen Sie www.devalk.nl**

WWW.DEVALK.NL



GILLISSEN KOTTER 1100



GILLISSEN KOTTER 1100



GILLISSEN KOTTER 1100



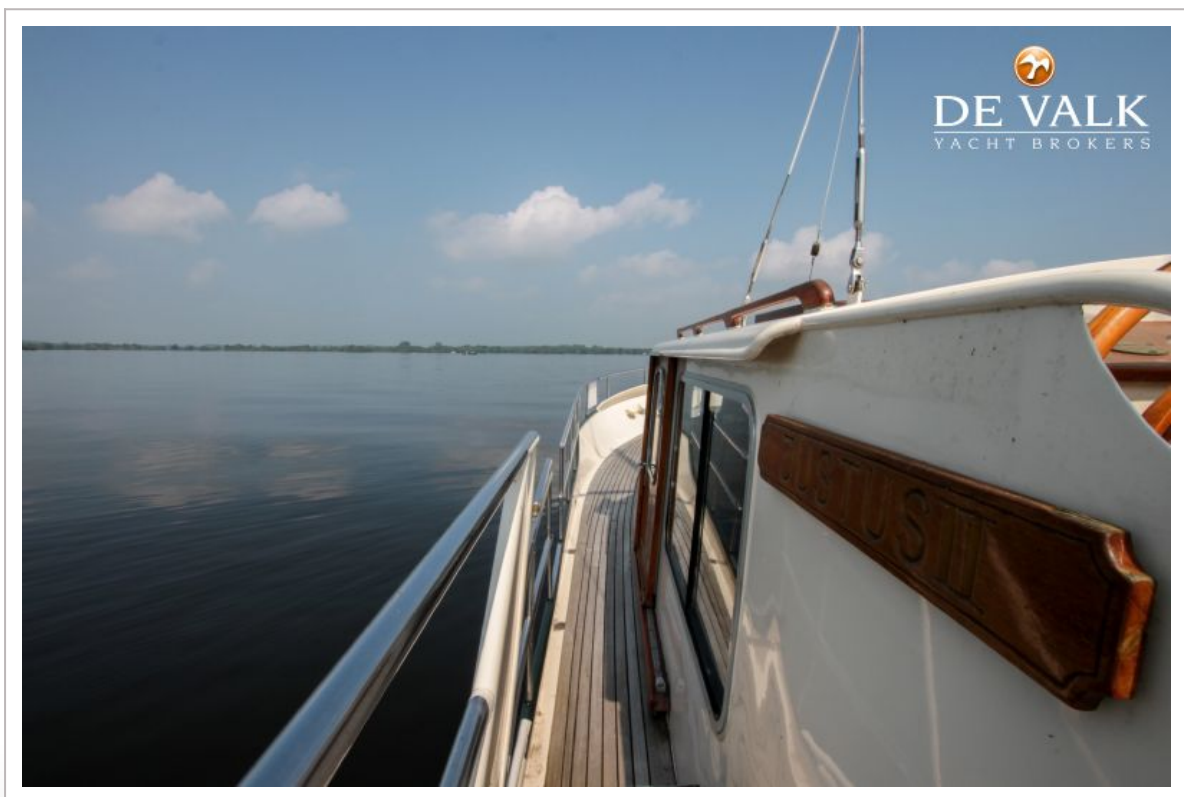
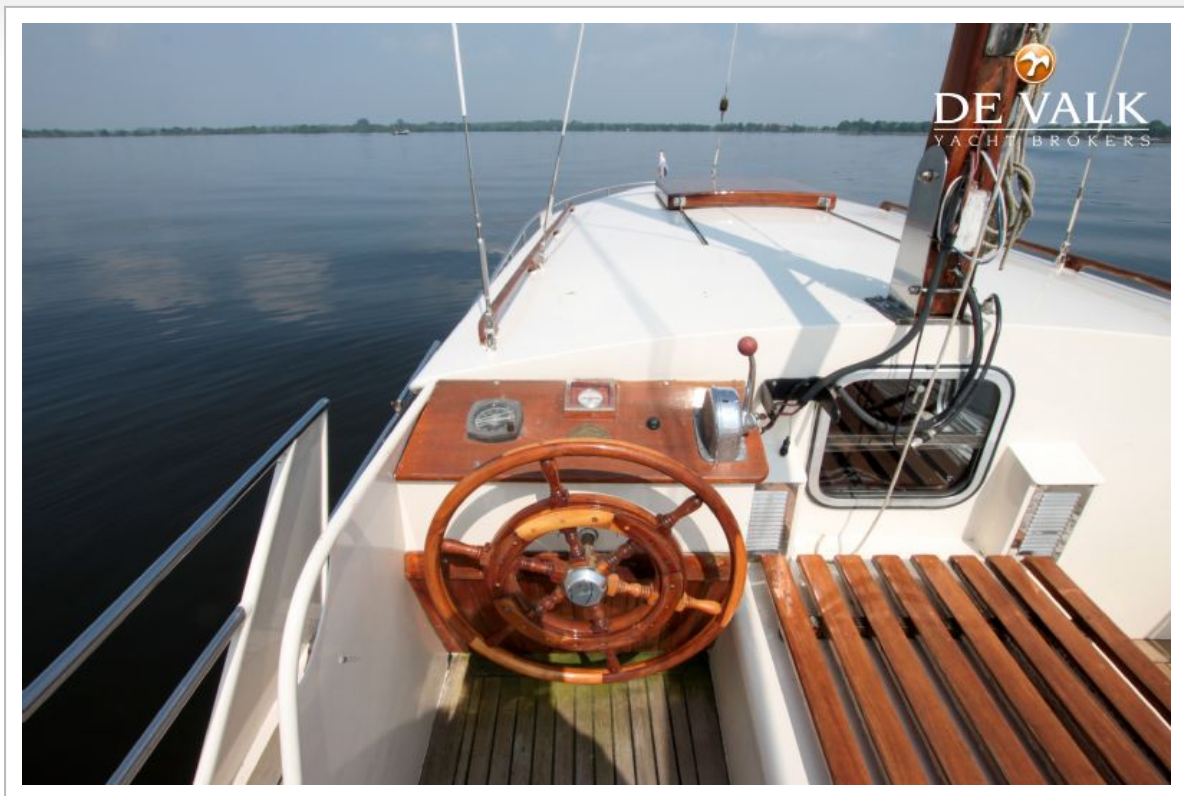
GILLISSEN KOTTER 1100



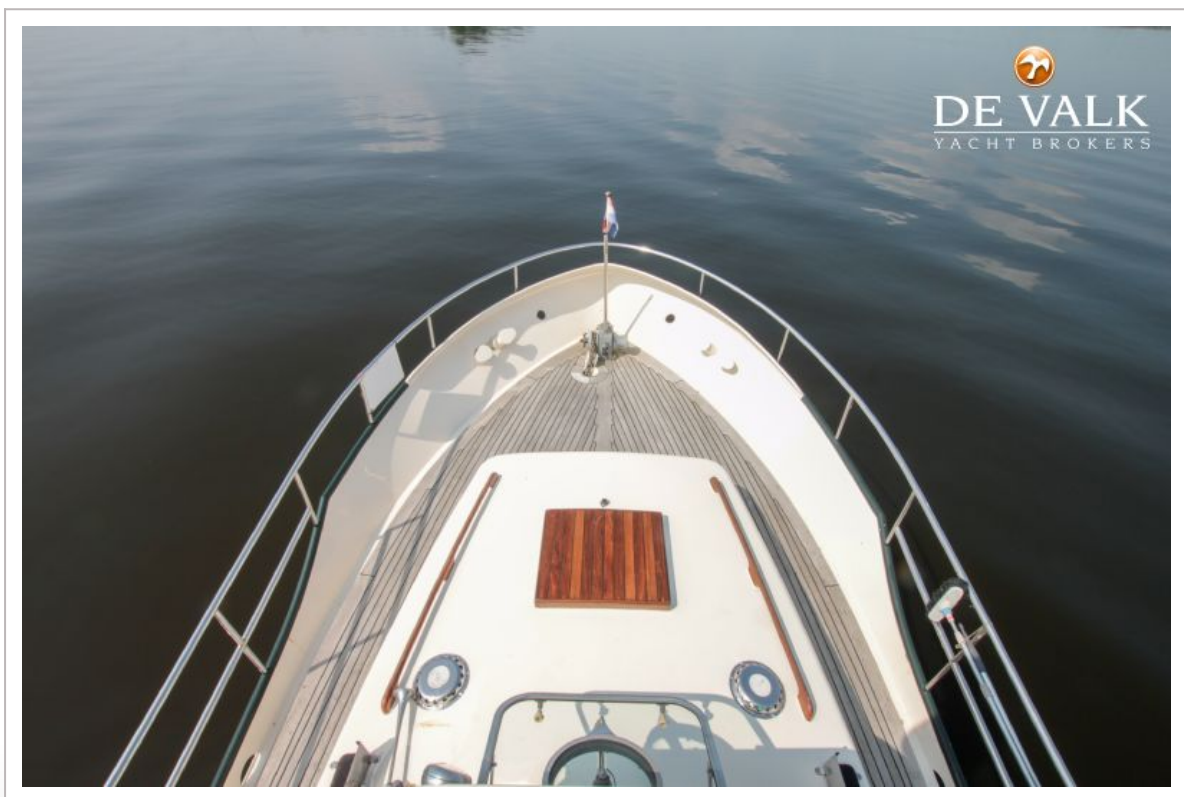
GILLISSEN KOTTER 1100



GILLISSEN KOTTER 1100



GILLISSEN KOTTER 1100





GILLISSEN KOTTER 1100



GILLISSEN KOTTER 1100



GILLISSEN KOTTER 1100

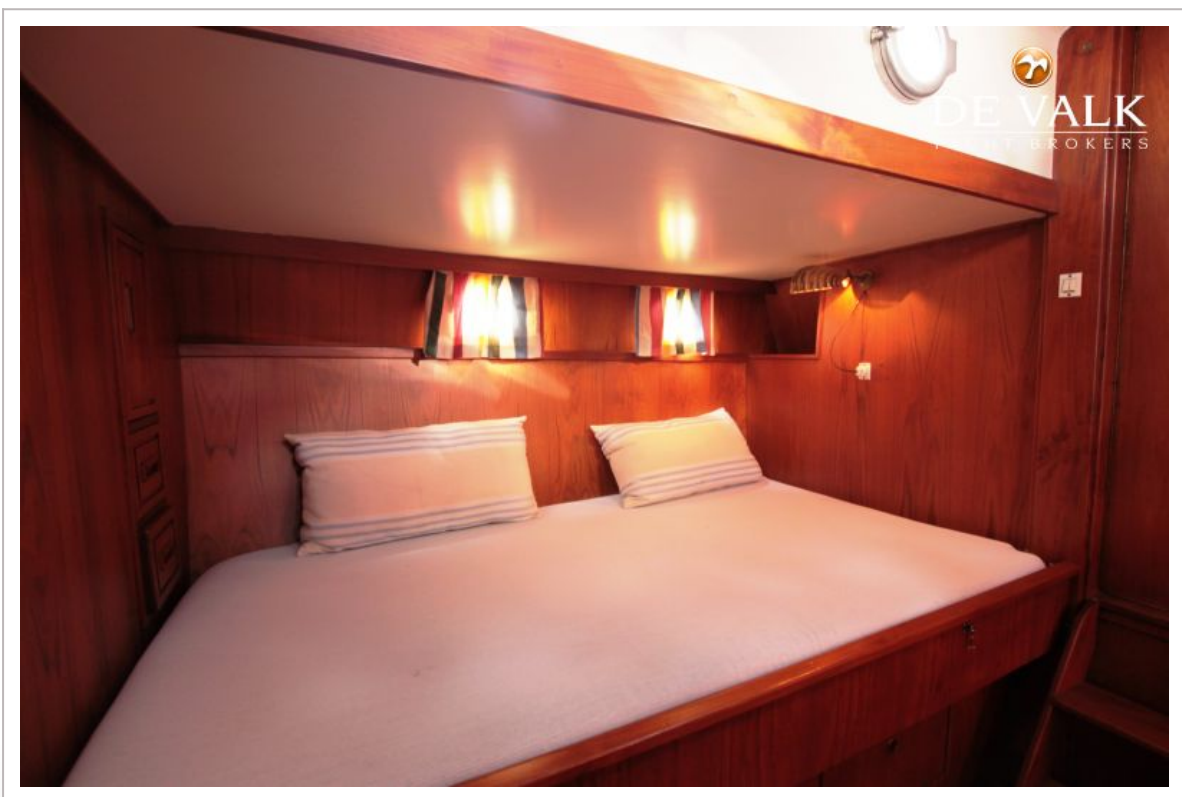




GILLISSEN KOTTER 1100



GILLISSEN KOTTER 1100



GILLISSEN KOTTER 1100

