



VALKVLET 1030



VALKVLET 1030

BROKER'S COMMENTS

The Valkvlet 1030 is build in 1987 at the well known shipyard P.Valk in Franeker. The large open cockpit is finished with teak which gives the Valkvlet a classic look. Due the low airdraft and equipped with an electric bowthruster the Valkvlet is perfect for sailing the small inland waters. Inside you will find the steering position, a galley and a cabin with a V bed. A long stay on board is no problem.

Koen Mulder

SPECIFICATIONS

Dimensions	10.30 x 3.30 x 1.00 (m)	Builder	P.Valk Jachtbouw
Built	1987	Cabins	1
Material	Steel	Berths	4
Engine(s)	1 x Ford 2723E diesel	Hp/Kw	105.00 (hp), 77.18 (kw)
Asking price	sold (VAT)	Lying	at sales office

CONTACT

Sales office	De Valk Loosdrecht B.V.	Telephone	+31 (0)35 582 90 30
Address	't Breukeleveense Meentje 6 1231LM Loosdrecht / Wijdmeren NL	E-mail	loosdrecht@devalk.nl

DISCLAIMER

These particulars are given in good faith as supplied but cannot be guaranteed.



GENERAL

Model	VALKVLET 1030
Type	motor yacht
LOA (m)	10,30
Beam (m)	3,30
Draft (m)	1,00
Air draft (m)	2,40
Headroom (m)	1,95
Year built	1987
Builder	P.Valk Jachtbouw
Country	The Netherlands
Designer	P.Valk
Displacement (t)	9
Hull material	steel
Hull colour	blue
Hull shape	round-bilged
Superstructure material	stainless steel
Rubbing strake	fender rope
Deck material	steel
Deck finish	teak
Cockpit deck finish	teak
Window frame	aluminium
Window material	glass
Portholes	aluminium
Radar arch	collapsible
Mast can be lowered	manual
Wheel steering	hydraulic
Inside helm position	yes

ACCOMMODATION

Cabins	1
--------	---



VALKVLET 1030

Berths	4
Interior	teak
Floor	teak
Open cockpit	yes
Heating	yes
Opening door to cockpit	yes
Galley	yes
Countertop	wood
Sink	stainless steel
Cooker	calor gas 4 burner
Fridge	
Hot water system	geyser on Calor Gas
Water pressure system	electrical
Owners cabin	v-bed
Wardrobe	hanging
Toilet	shared
Toilet system	manual
Wash basin	at the toilet
Shower	shared

MACHINERY

No of engines	1
Make	Ford
Type	2723E
HP	105,00
kW	77,18
Fuel	diesel
Engine hours	1970,6 (17-4-2015)
Engine cooling system	seawater
Bowthruster	electric
Exhaust	watercooled



Batteries	yes
Start battery	yes
Service battery	yes
Electric engine battery	yes
Bowthruster battery	yes
Battery monitor	yes
Shorepower	with cable

NAVIGATION

Compass	yes
Rudder angle indicator	yes

EQUIPMENT

Boarding ladder	stainless steel
Anchor	yes
Anchor chain	yes
Sea railing	wire
Grab rail (superstructure)	wood
Wiper	yes
Horn	yes
Fenders	yes
Radio-cd player	yes
Cockpit speakers	yes
Fire extinguisher	yes
Extra info	winter cover



VALKVLET 1030



VALKVLET 1030



VALKVLET 1030



VALKVLET 1030



VALKVLET 1030



VALKVLET 1030



VALKVLET 1030



VALKVLET 1030



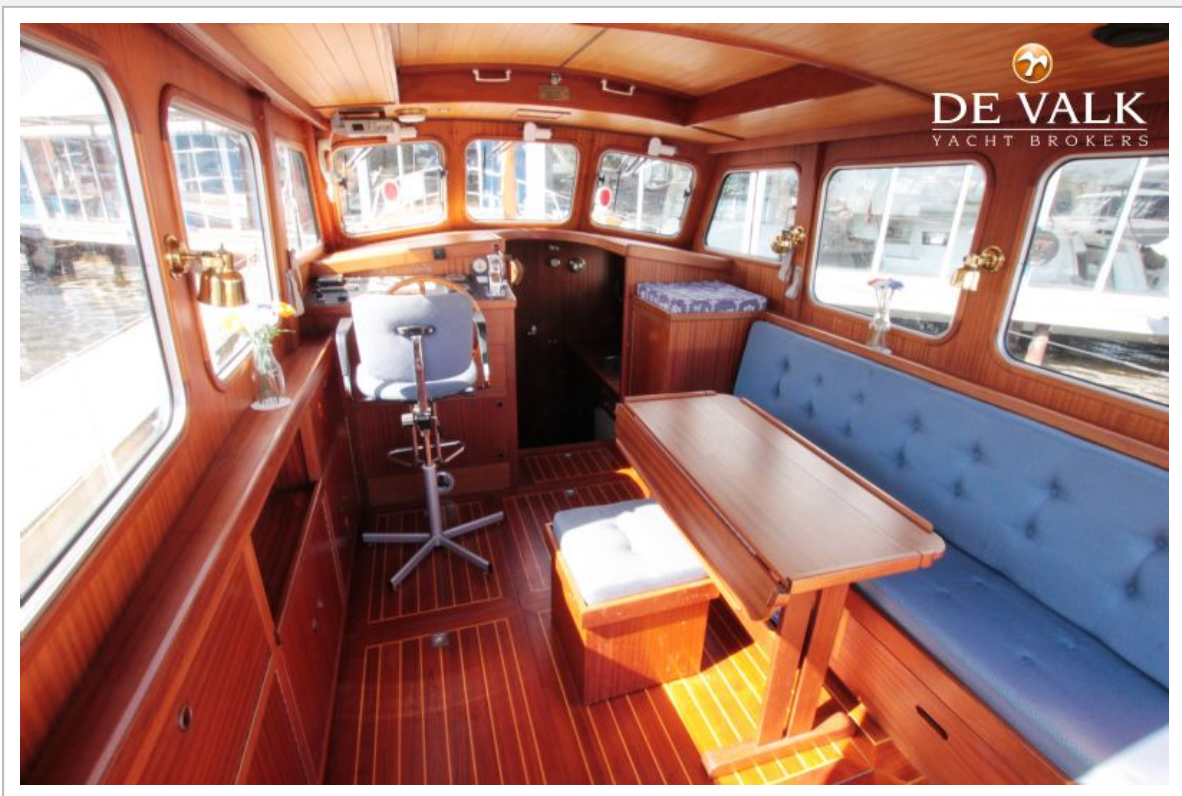
VALKVLET 1030



VALKVLET 1030



VALKVLET 1030



VALKVLET 1030



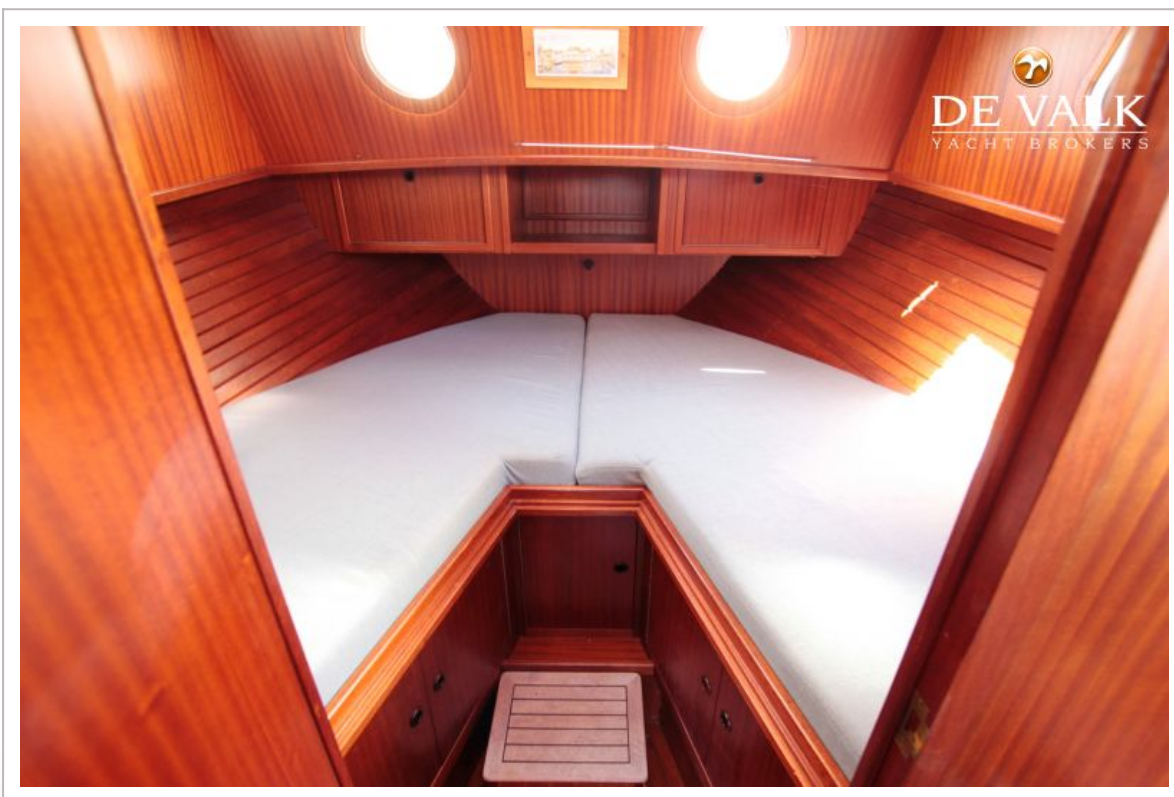
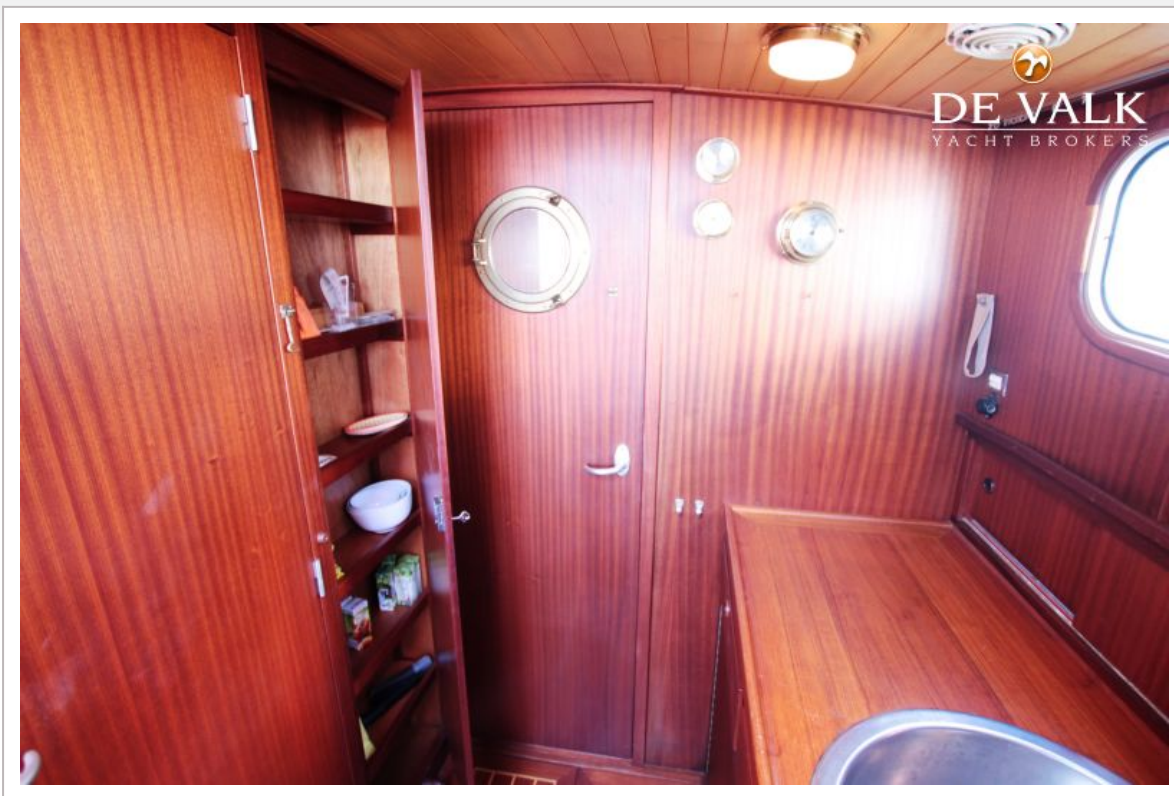
VALKVLET 1030



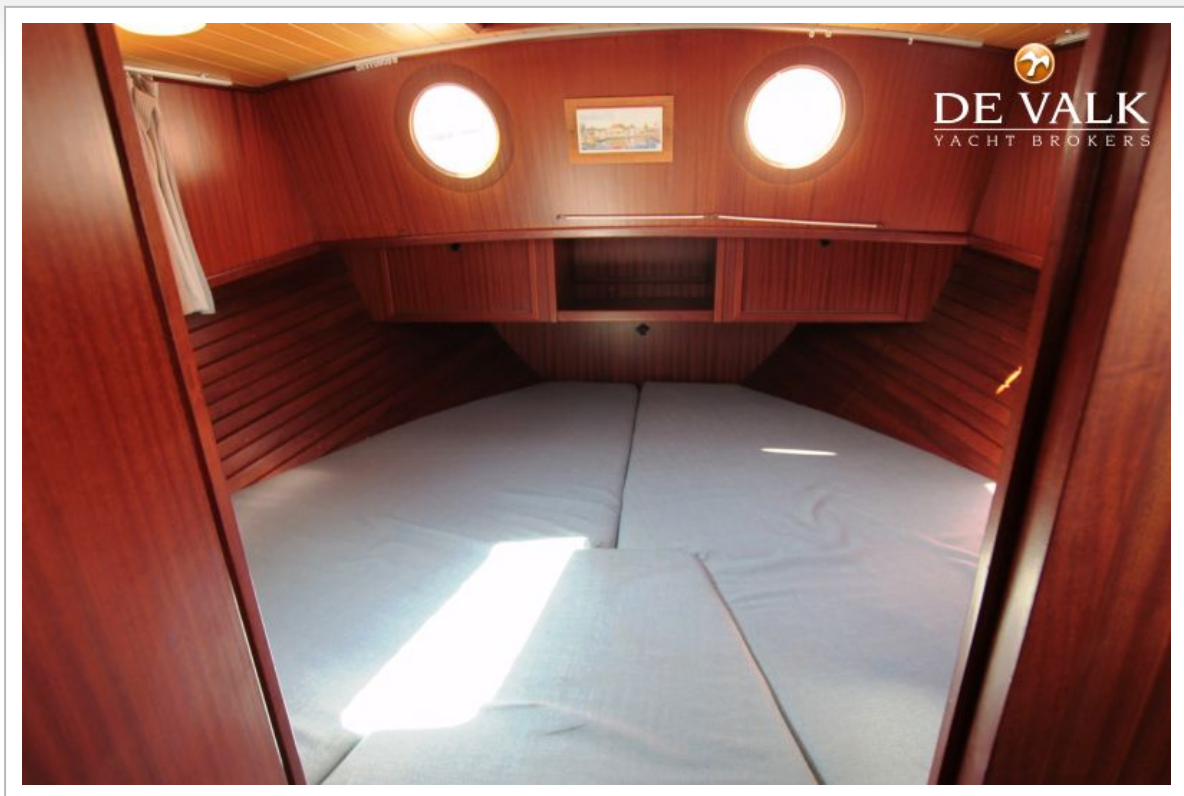
VALKVLET 1030



VALKVLET 1030



VALKVLET 1030



VALKVLET 1030



VALKVLET 1030

