



DE VALK  
YACHT BROKERS



ONJ LOODSBOOT 1020



DE VALK  
YACHT BROKERS

BROKERAGE | CHARTER | BERTHS | FINANCE | INSURANCE | YACHT MANAGEMENT

## BROKER'S COMMENTS

You have to see this ONJ 1020! Both interior and exterior are in an excellent state of maintenance. This GRP motor yacht is equipped with a silent and economical Volvo Penta D3 diesel engine and is very easy to maneuver in combination with the Vetus electric bowthruster. The ONJ 1020 "Caro" is equipped with a new cockpit cover, new antifouling and a new Lowrance HDS gen2 Touch. All installed at the end of 2014. In a few words: with this motor yacht you are ready to go for an unforgettable experience on the water.

*Arne Doodeman*

## SPECIFICATIONS

<b>Dimensions</b>	10.20 x 3.45 x 1.05 (m)	<b>Builder</b>	van Olst yachting & Van Zandbergen
<b>Built</b>	2008	<b>Cabins</b>	2
<b>Material</b>	GRP	<b>Berths</b>	6
<b>Engine(s)</b>	1 x Volvo Penta D3-110 diesel	<b>Hp/Kw</b>	110.00 (hp), 80.85 (kw)
<b>Asking price</b>	sold (VAT )	<b>Lying</b>	at sales office

## CONTACT

<b>Sales office</b>	De Valk Sneek	<b>Telephone</b>	+31 (0)515 42 80 30
<b>Address</b>	Zwolsmanweg 7 8606 KC Sneek NL	<b>E-mail</b>	sneek@devalk.nl

## DISCLAIMER

These particulars are given in good faith as supplied but cannot be guaranteed.



## GENERAL

Model	ONJ LOODSBOOT 1020
Type	motor yacht
LOA (m)	10,20
Beam (m)	3,45
Draft (m)	1,05
Air draft (m)	2,35
Headroom (m)	1,90
Year built	2008
Builder	Van Olst yachting & Van Zandbergen
Country	The Netherlands
Displacement (t)	8
CE norm	C
Hull material	GRP
Hull colour	blue
Superstructure material	GRP
Rubbing strake	rubber
Deck material	GRP
Deck finish	anti-slip moulded in
Superstructure deck finish	
Antifouling (year)	03-2015
Dorades	yes
Window frame	aluminium
Window material	glass
Deckhatch	yes
Portholes	aluminium
Mast can be lowered	manual
Fuel tank (litre)	stainless steel 360 l.
Level indicator (fuel tank)	yes
Freshwater tank (litre)	stainless steel 150 l.
Blackwater tank (litre)	polyethylene 135 l.



Wheel steering	hydraulic
Inside helm position	yes
Extra info	hull polished and new antifouling (03-2015)

## ACCOMMODATION

Cabins	2
Berths	6
Interior	
Floor	woodprint
Headroom saloon (m)	1.90 m
Heating	diesel ducted hot air Webasto 3500 Airmatic
Dinette	yes
Opening door to cockpit	yes
Galley	yes
Countertop	corian
Sink	stainless steel
Cooker	calor gas 4-burner
Extractor	yes
Fridge	with freezer compartment Isotherm 42 l.
Hot water system	220V/engine/heating
Water pressure system	electrical
Owners cabin	double bed
Bed length (m)	2.00 m
Wardrobe	hanging/drawers/shelves
Bathroom	shared
Toilet	shared
Toilet system	manual
Wash basin	in the bathroom
Shower	shared
Guest cabin 1	double bed
Bed length (m)	1.90 m



## MACHINERY

No of engines	1
Make	Volvo Penta
Type	D3-110
HP	110,00
kW	80,85
Fuel	diesel
Year installed	2008
Maximum speed (kn)	9
Cruising speed (kn)	6
Consumption (l/hr)	4
Engine hours	288
Engine cooling system	seawater
Drive	shaft
Engine controls	bowden cable
Bowthruster	electric Vetus
Gearbox	hydraulic
Exhaust	watercooled
Propeller type	fixed
Propeller blades	4-bladed
Propeller shaft material	stainless steel
Shaft lubrication	water
Electric bilge pump	yes
Batteries	4x
Start battery	1x
Service battery	2x
Bowthruster battery	1x
Battery monitor	yes
Battery charger	Victron Energy Phoenix Charger 12 V/5 amp
Shorepower	with cable



## NAVIGATION

Electric compass	yes
Depth sounder	Lowrance HDS7M
Log	yes
Fish finder	Lowrance HDS7M
VHF	Lowrance Link5
GPS	Lowrance HDS7M
Plotter	Lowrance HDS7M

## EQUIPMENT

Fixed windscreen	yes
Cockpit cover	(2014)
Cockpit table	round (teak)
Boarding ladder	stainless steel
Anchor	yes
Anchor chain	20 m
Windlass	manual
Grab rail (superstructure)	stainless steel
Wiper	3x
Horn	electric
Fenders	yes
Mooring lines	yes
Radio-cd player	Pioneer
Cockpit speakers	yes
Fire extinguisher	1x



# ONJ LOODSBOOT 1020



# ONJ LOODSBOOT 1020



# ONJ LOODSBOOT 1020



# ONJ LOODSBOOT 1020



# ONJ LOODSBOOT 1020



# ONJ LOODSBOOT 1020

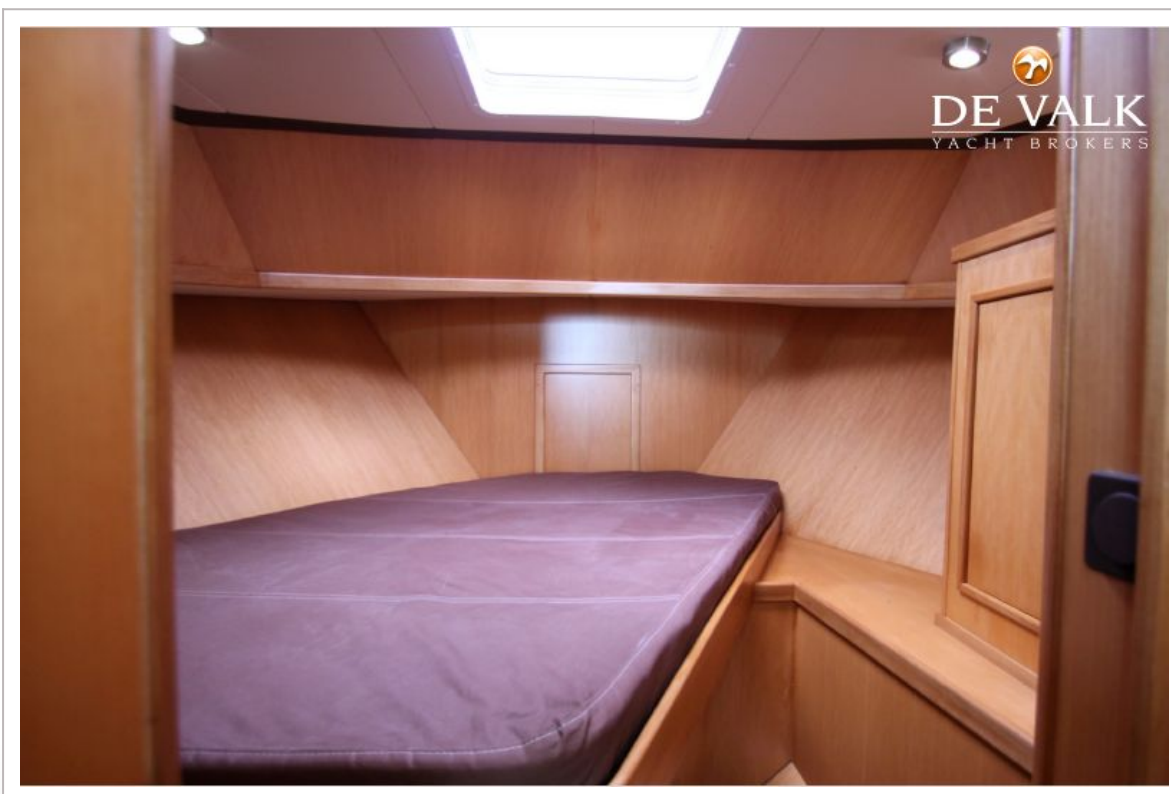




# ONJ LOODSBOOT 1020



# ONJ LOODSBOOT 1020



# ONJ LOODSBOOT 1020





