



DE VALK
YACHT BROKERS



MISTRAL 1350



DE VALK
YACHT BROKERS

BROKERAGE | CHARTER | BERTHS | FINANCE | INSURANCE | YACHT MANAGEMENT

MISTRAL 1350

BROKER'S COMMENTS

The Mistral 1350 designed in 1996 by Klaas Bes and built by Mekon yachtbuilders. The boat offers a lot of space which makes her the ideal family boat to discover the Dutch waterways and beyond. The double Mercedes diesel engines are very reliable and safe. This Mistral is easy to handle using the bow- and sternthruster.

Erwin van den Braak

SPECIFICATIONS

Dimensions	14.00 x 4.15 x 1.20 (m)	Builder	Mekon
Built	1996	Cabins	2
Material	Steel	Berths	6
Engine(s)	2 x Mercedes SL135L diesel	Hp/Kw	2 x 110.00 (hp), 80.85 (kw)
Asking price	sold (VAT)	Lying	at sales office

CONTACT

Sales office	De Valk Loosdrecht B.V.	Telephone	+31 (0)35 582 90 30
Address	't Breukeleveense Meentje 6 1231LM Loosdrecht / Wijdmeren NL	E-mail	loosdrecht@devalk.nl

DISCLAIMER

These particulars are given in good faith as supplied but cannot be guaranteed.



GENERAL

Model	MISTRAL 1350
Type	motor yacht
LOA (m)	14,00
LWL (m)	13,50
Beam (m)	4,15
Draft (m)	1,20
Air draft (m)	3,35
Headroom (m)	2,10
Year built	1996
Builder	Mekon
Country	The Netherlands
Designer	Klaas Bes
Hull material	steel
Hull colour	white
Hull shape	hard chine
Keel type	bilge keels
Superstructure material	steel
Rubbing strake	stainless steel
Deck material	steel
Deck finish	anti-slip paint
Dorades	yes
Window frame	aluminium
Portholes	aluminium
Insulation	rockwool
Mast can be lowered	manual
Fuel tank (litre)	stainless steel 2x 500
Level indicator (fuel tank)	yes
Freshwater tank (litre)	500
Level indicator (freshwater)	yes
Wheel steering	hydraulic



Outside helm position yes

ACCOMMODATION

Cabins	2
Berths	6
Interior	teak
Floor	teak
Aft deck	yes
Pilot house	yes
Saloon	yes
Headroom saloon (m)	2,10
Heating	Gas
Dinette	yes
Dinette to convert into berth	yes
Galley	yes
Countertop	plastic
Sink	stainless steel
Cooker	calor gas
Oven	yes
Extractor	yes
Fridge	yes
Hot water system	220V + Calor Gas
Water pressure system	electrical
Owners cabin	French bed
Wardrobe	shelves and hanging
Bathroom	en suite
Toilet	en suite
Toilet system	manual
Wash basin	in the bathroom
Shower	en suite
Guest cabin 1	v-bed



Bed length (m)	2
Wardrobe	shelves and hanging

MACHINERY

No of engines	2
Make	Mercedes
Type	SL135L
HP	110,00
kW	80,85
Fuel	diesel
Year installed	1996
Maximum speed (kn)	9
Cruising speed (kn)	7
Engine hours	1300 (19-6-2015)
Engine cooling system	seawater
Drive	shaft
Engine controls	bowden cable
Gearbox	mechanical
Bowthruster	electric
Sternthruster	electric
Gearbox	hydraulic
Exhaust	watercooled
Propeller type	fixed
Propeller blades	4
Propeller shaft material	stainless steel
Shaft lubrication	water
Electric bilge pump	yes
Start battery	2x
Service battery	2x 900A
Bowthruster battery	2x 12V
Sternthruster battery	1x 24V



Battery monitor	yes
Battery charger/inverter	yes
Diode battery combiners	yes
Shorepower	with cable

NAVIGATION

Compass	yes
Depth sounder	yes
Log	yes
Windset	yes
Repeater	yes
VHF	yes
VHF handheld	yes
Wind vane steering install.	yes
Rudder angle indicator	yes

EQUIPMENT

Fixed windscreen	yes
Cockpit cover	yes
Bimini	yes
Sun awning	yes
Winter cover	yes
Bathing platform	yes
Boarding ladder	yes
Gangway	yes
Anchor	yes
Anchor chain	yes
Windlass	manual
Capstan	yes
Deck wash	yes
Grab rail (superstructure)	yes



Danbuoy	yes
Wiper	yes
Horn	electric
Radar reflector	yes
Fenders	yes
Mooring lines	yes
Alarm system	yes
TV	yes
Radio-cd player	yes
Speakers in salon	yes
Fire extinguisher	yes



MISTRAL 1350



MISTRAL 1350



MISTRAL 1350



MISTRAL 1350



MISTRAL 1350



MISTRAL 1350



MISTRAL 1350



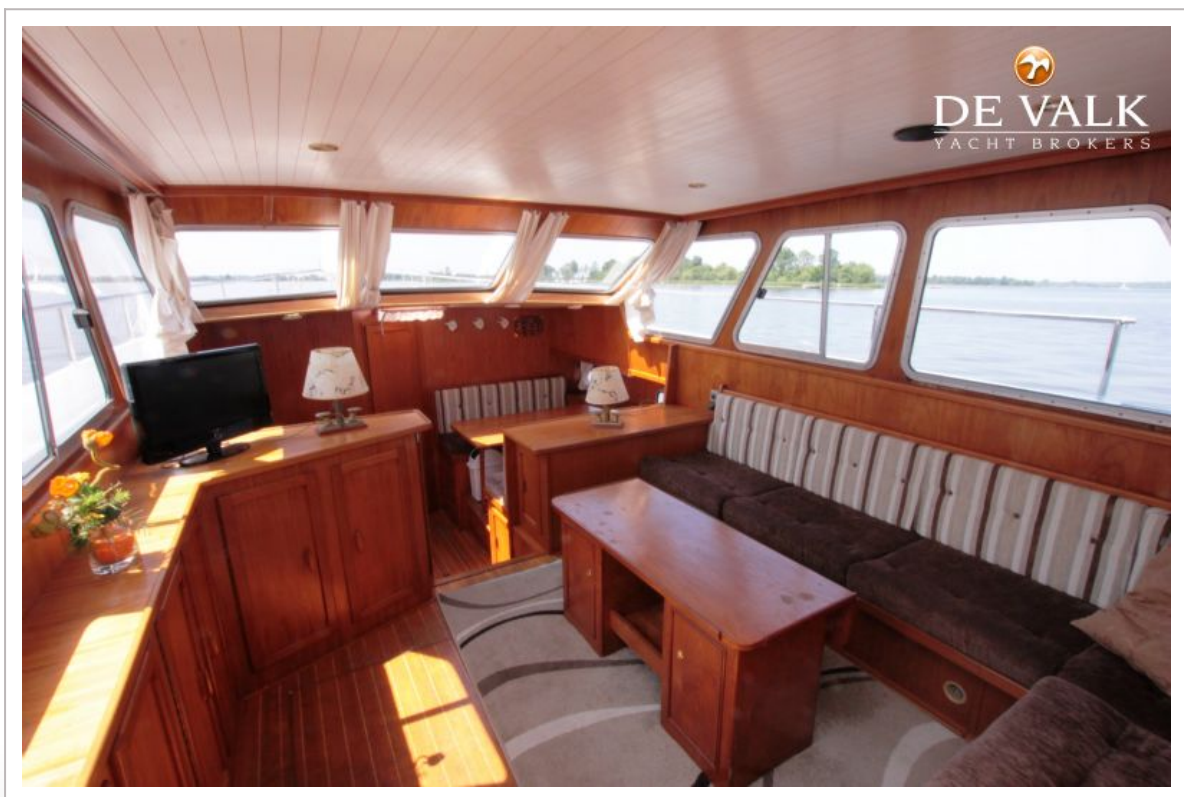
MISTRAL 1350



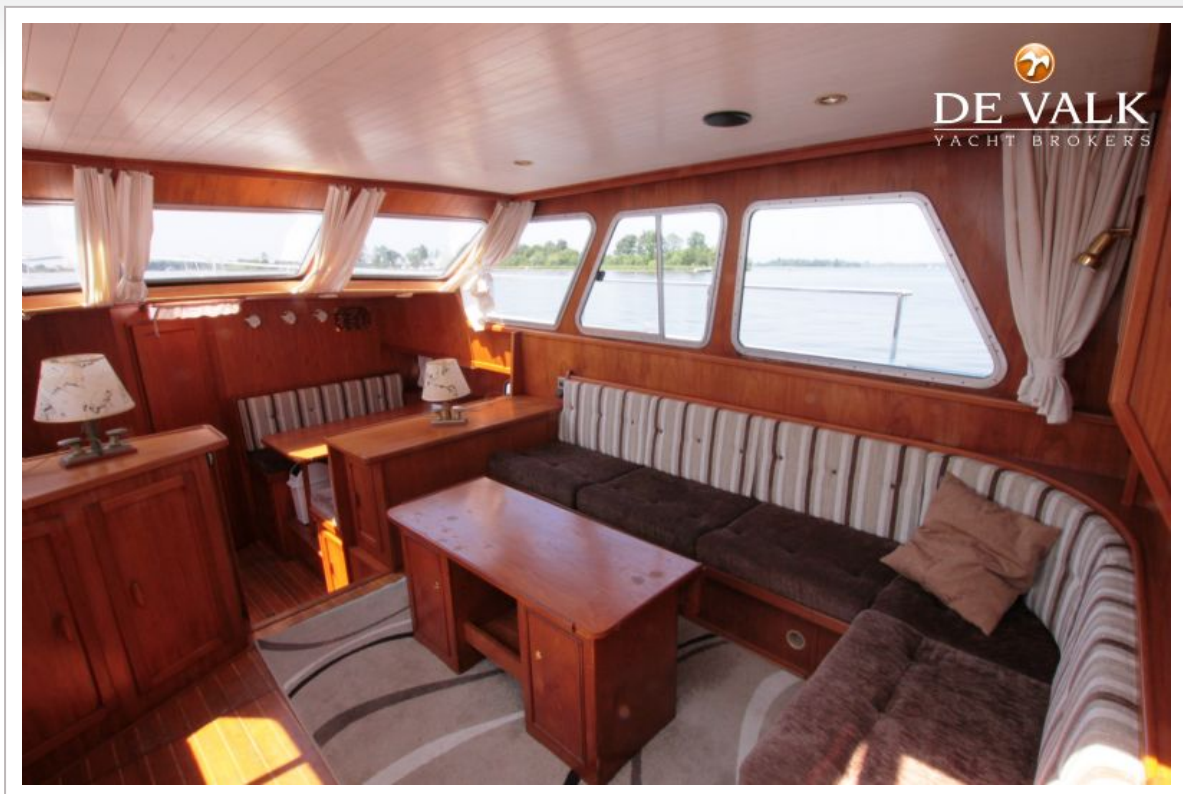
MISTRAL 1350



MISTRAL 1350



MISTRAL 1350



MISTRAL 1350



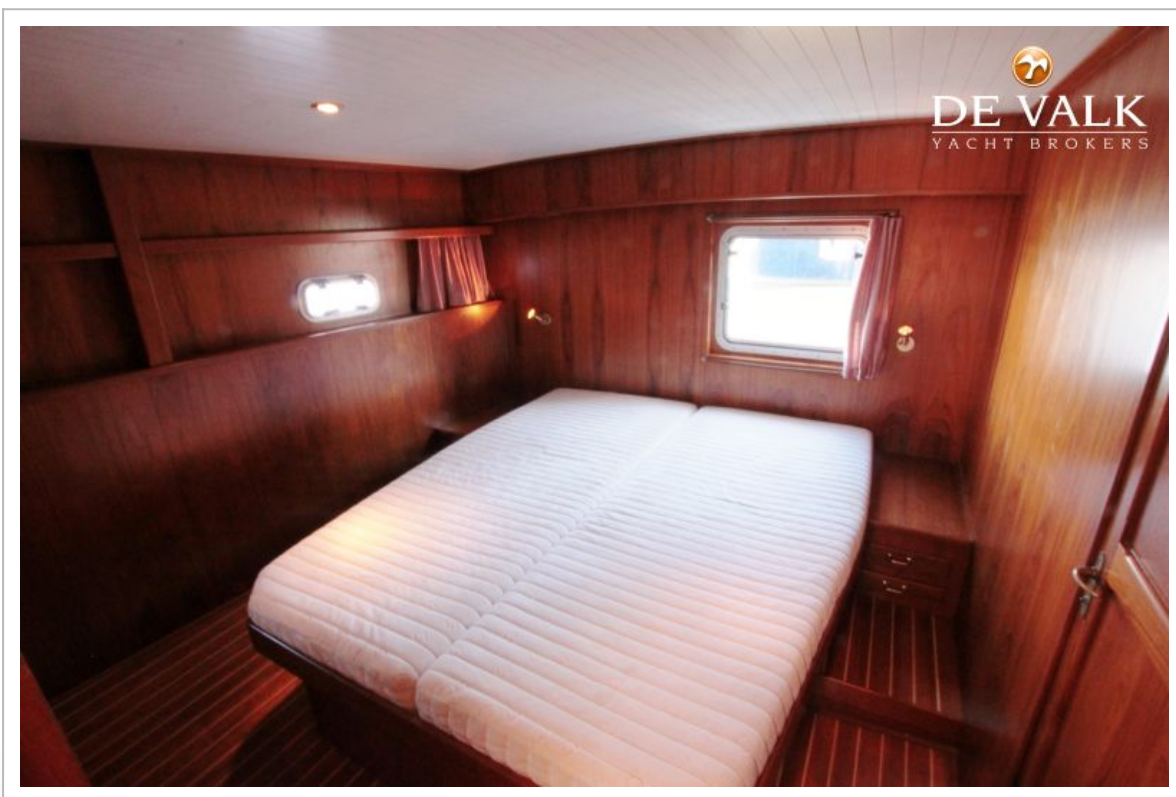
MISTRAL 1350



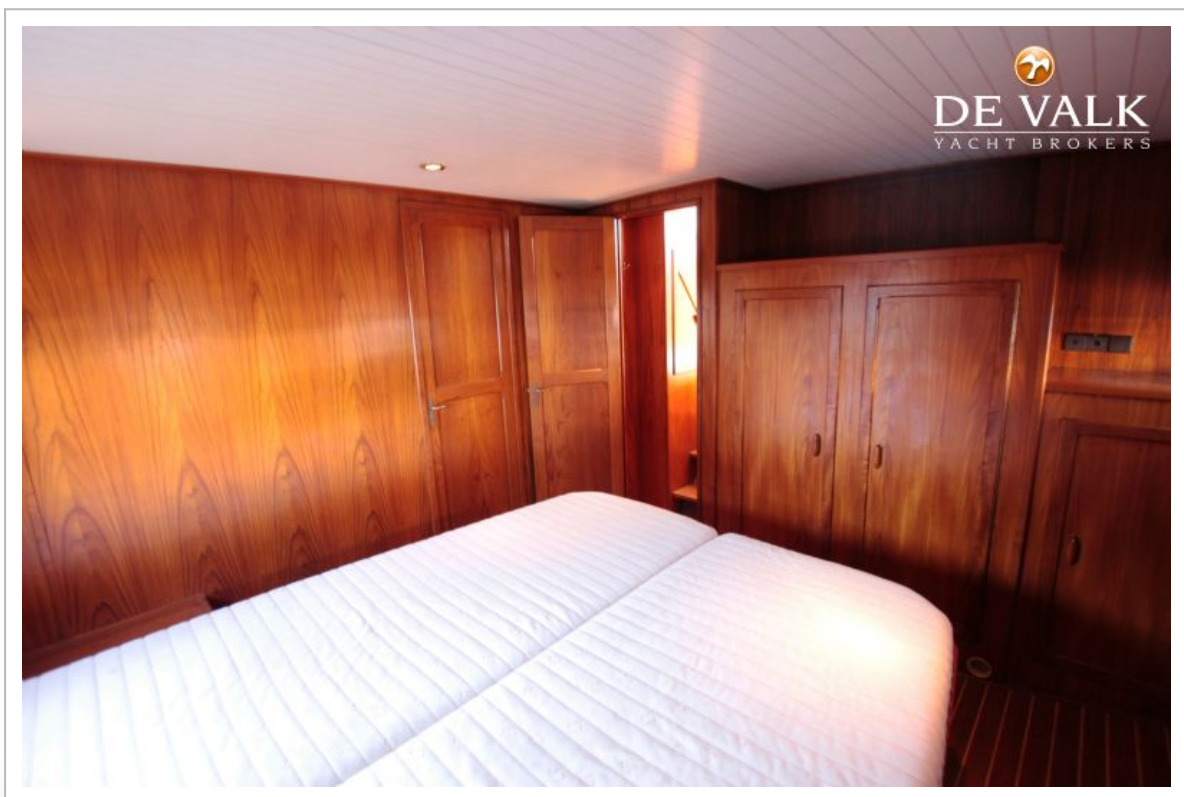
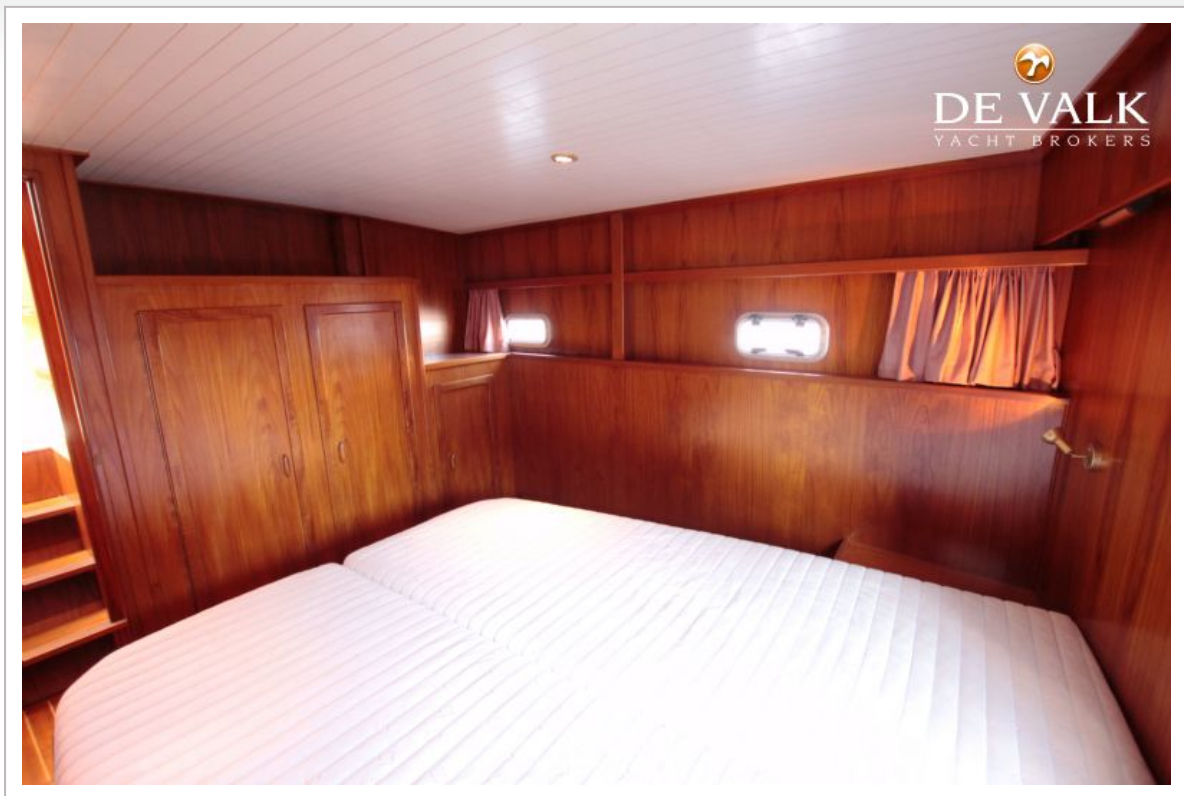
MISTRAL 1350



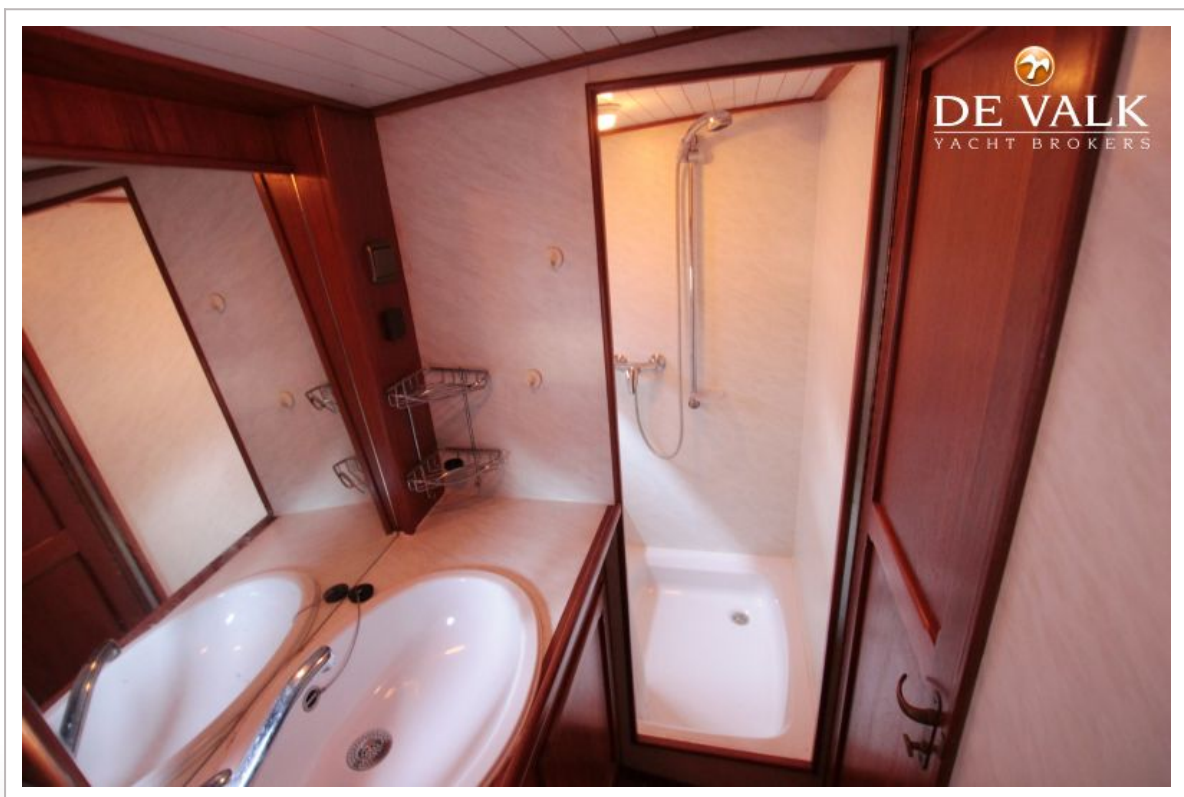
MISTRAL 1350



MISTRAL 1350



MISTRAL 1350



MISTRAL 1350

