



CHRIS-CRAFT 40

BROKER'S COMMENTS

CHRIS - CRAFT 1952. Large ship with two reliable Volvo Penta engines and autopilot which makes your sail comfortably. Complete refit in 1988 and two new Volvo engines. She will be auctioned on January 27th 2016 in cooperation with Schipveiling and BVA Auctions. For further details and viewing days go to: <https://en.bva-auctions.com/auction/index/19769> Starting price of the auction EUR. 10.000, offers can be made from January 20th 2016 on the website of BVA.

Arjen Hoeksma

SPECIFICATIONS

Dimensions	13.80 x 4.20 x 0.80 (m)	Builder	Chris-Craft
Built	1952	Cabins	2
Material	Mahogany	Berths	4
Engine(s)	2 x Volvo Penta TAMD 41A diesel	Hp/Kw	2 x 220.00 (hp), 161.70 (kw)
Asking price	sold (VAT)	Lying	at sales office

CONTACT

Sales office	De Valk Loosdrecht B.V.	Telephone	+31 (0)35 582 90 30
Address	't Breukeleveense Meentje 6 1231LM Loosdrecht / Wijdmeren NL	E-mail	loosdrecht@devalk.nl

DISCLAIMER

These particulars are given in good faith as supplied but cannot be guaranteed.



GENERAL

Model	CHRIS-CRAFT 40
Type	motor yacht
LOA (m)	13,80
Beam (m)	4,20
Draft (m)	0,80
Air draft (m)	3,90
Year built	1952
Builder	Chris-Craft
Hull material	mahogany
Hull colour	white
Hull shape	hard chine
Superstructure material	wood
Rubbing strake	aluminum
Window frame	aluminium
Window material	glass
Fuel tank (litre)	1000
Level indicator (fuel tank)	yes
Freshwater tank (litre)	200
Wheel steering	chain steering
Inside helm position	yes
Outside helm position	chain steering

ACCOMMODATION

Cabins	2
Berths	4
Aft deck	yes
Sliding door to cockpit	yes
Opening door to aft deck	yes
Countertop	plastic
Sink	stainless steel



Cooker	calor gas
Gas alarm	yes
Fridge	with freezer compartment
Hot water system	geyser on Calor Gas
Water pressure system	electrical
Owners cabin	twin single
Wardrobe	hanging and drawers
Bathroom	en suite
Toilet	en suite
Toilet system	manual
Wash basin	at the toilet
Shower	en suite
Guest cabin 1	v-bed
Toilet	shared
Toilet system	manual
Wash basin	at the toilet

MACHINERY

No of engines	2
Make	Volvo Penta
Type	TAMD 41A
HP	220,00
kW	161,70
Fuel	diesel
Year installed	1988
Maximum speed (kn)	18
Cruising speed (kn)	8
Engine hours	2372 (10-10-2015)
Engine cooling system	freshwater heat exchanger
Engine controls	bowden cable
Exhaust	watercooled



Electric bilge pump	yes
Start battery	yes
Service battery	yes
Battery charger/inverter	Allas combi 12/800/30
Shorepower	with cable
Auto positioning system	yes
Trimtabs	yes

NAVIGATION

Compass	yes
VHF	Hape
Autopilot	Bendix
Radar/GPS/plotter	Raymarine
Searchlight	yes

EQUIPMENT

Sprayhood	yes
Cockpit cushions	yes
Cockpit table	yes
Bathing platform	Electrical www.tenderlift.com
Bow ladder	yes
Anchor	yes
Davits	stainless steel
Davits controls	manual
Sea railing	stainless steel
Railing side opening gates	yes
Wiper	yes
Horn	electric
TV	Phillips
Radio-cd player	yes
Sub-woofer	yes



Cockpit speakers	yes
Speakers in salon	yes
Speakers in cabin	yes





BROKERAGE | CHARTER | BERTHS | FINANCE | INSURANCE | YACHT MANAGEMENT



DE VALK
YACHT BROKERS



**This yacht will be auctioned,
for further details please visit www.devalk.nl**

**Dit schip zal worden geveild,
voor meer informatie gaat u naar www.devalk.nl**

**Dieses Schiff wird versteigert,
für weitere informationen besuchen Sie www.devalk.nl**

WWW.DEVALK.NL



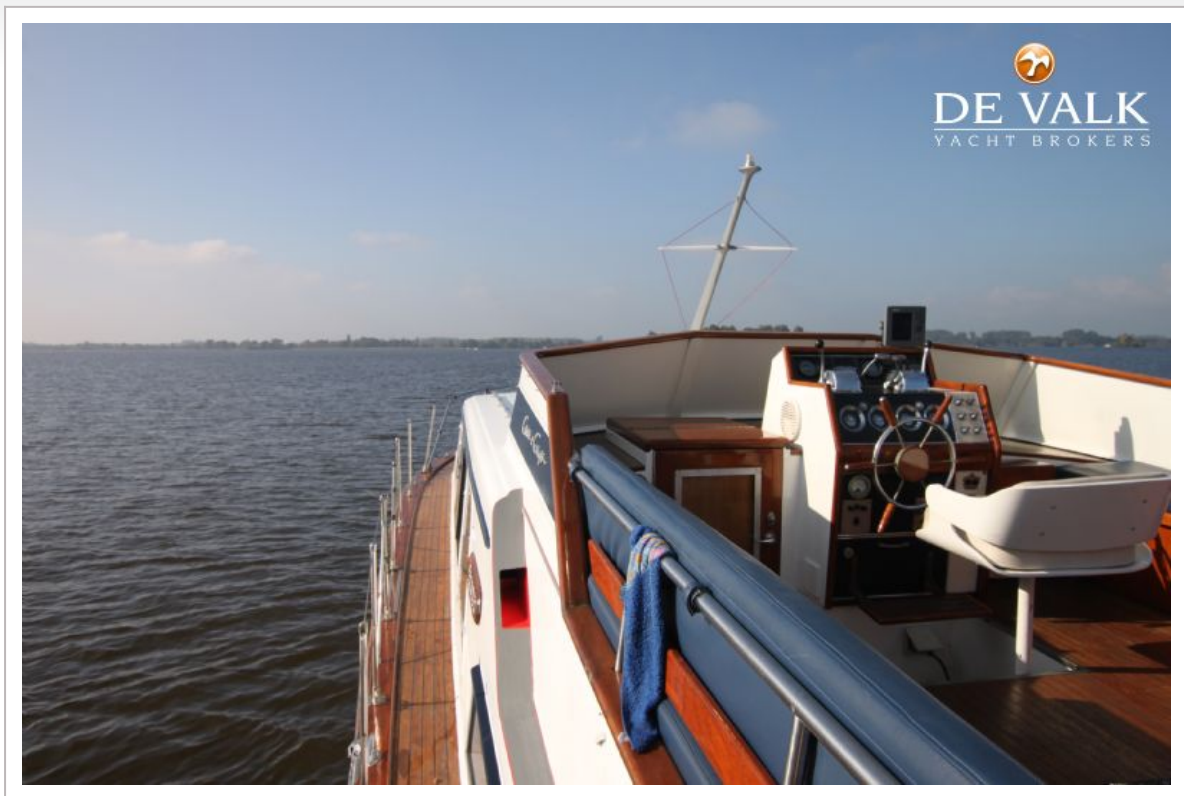
DE VALK
YACHT BROKERS



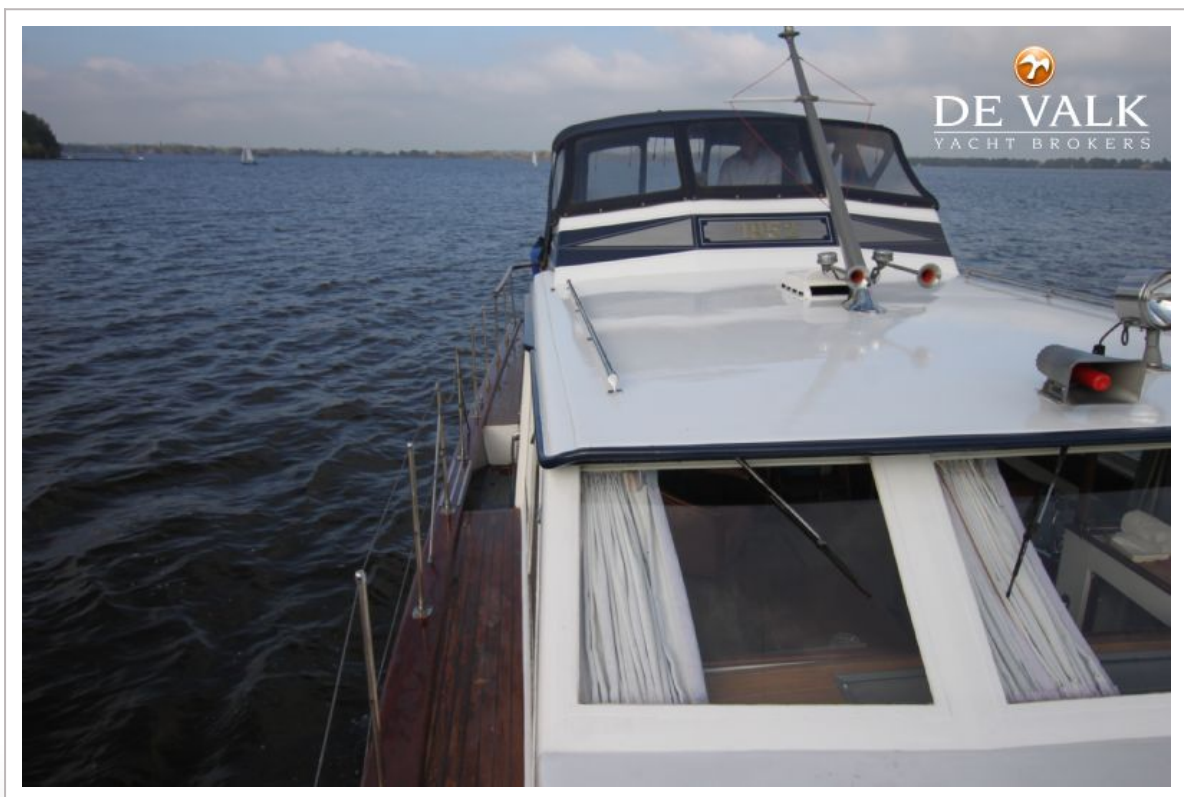
CHRIS-CRAFT 40



CHRIS-CRAFT 40



CHRIS-CRAFT 40



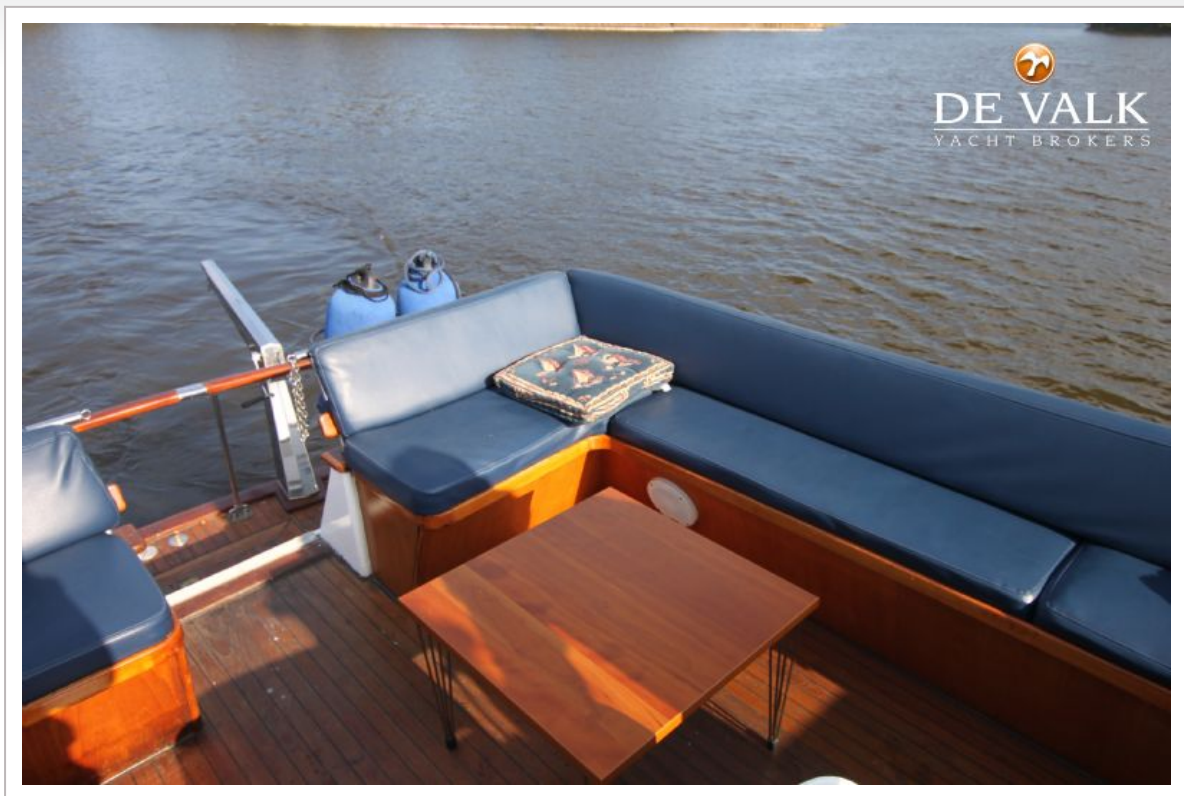
CHRIS-CRAFT 40



CHRIS-CRAFT 40



CHRIS-CRAFT 40



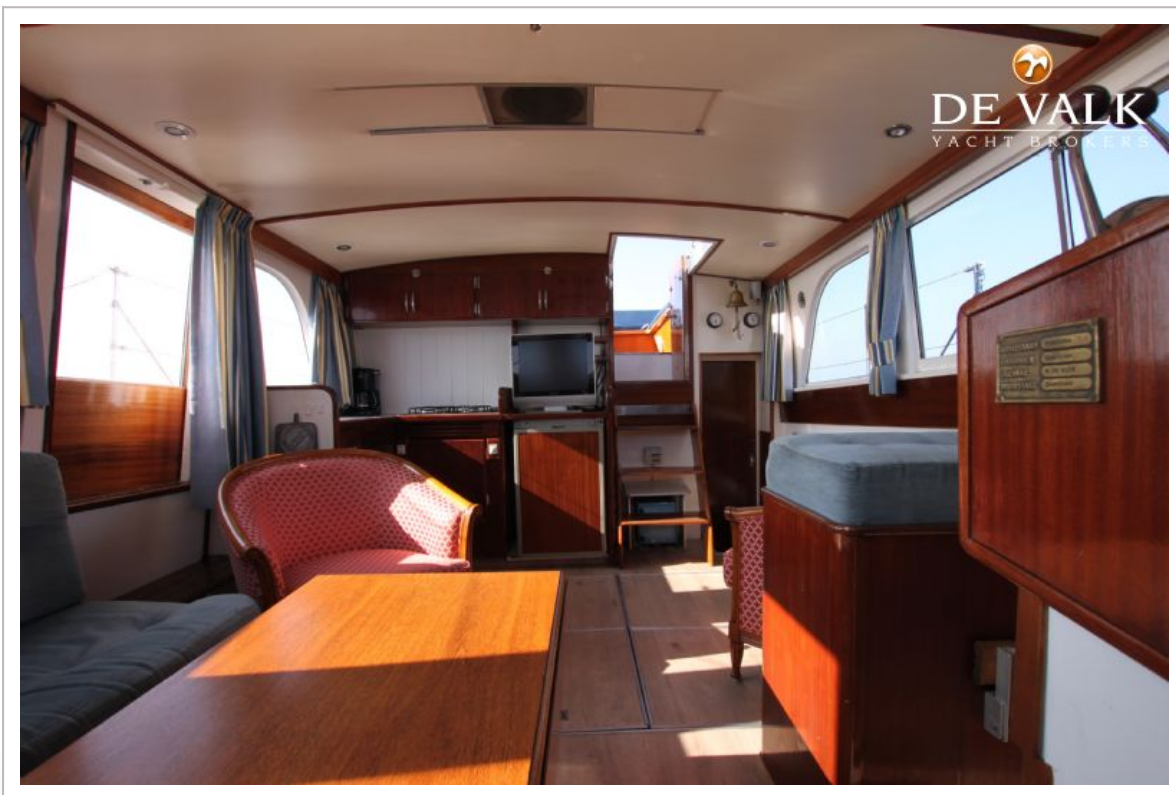
CHRIS-CRAFT 40



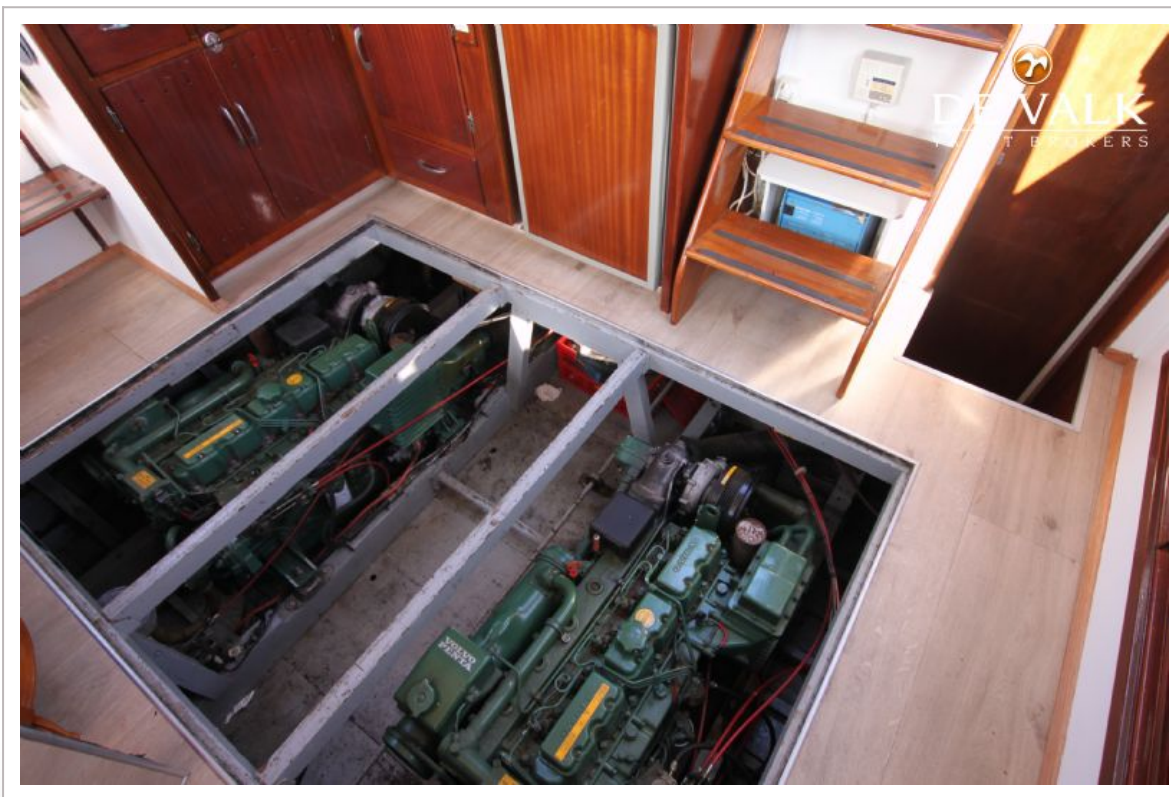
CHRIS-CRAFT 40



CHRIS-CRAFT 40



CHRIS-CRAFT 40



CHRIS-CRAFT 40



CHRIS-CRAFT 40



