



## ALMKOTTER 1280 AK

# ALMKOTTER 1280 AK

## BROKER'S COMMENTS

Almkotter 1280 "Wierschoten" is a heavy and professional buildt motor yacht equipped with double glazing, Kabola central heating and good insulation. A motor yacht suitable for a long stay on board. The current owner has not saved any costs and effort to keep this Almkotter in a top condition: hull painted in 2019, new washer/dryer (2020). a motor yacht with which you can discover Europe. "Wierschoten" is in our covered sales harbor in Sneek..Hope to see you soon!

*Henk de Vries*

## SPECIFICATIONS

<b>Dimensions</b>	13.00 x 4.35 x 1.30 (m)	<b>Builder</b>	Jacht en Scheepsbouw De Alm, Werkendam
<b>Built</b>	2001	<b>Cabins</b>	2
<b>Material</b>	Steel	<b>Berths</b>	4
<b>Engine(s)</b>	1 x Perkins Sabre M135 diesel	<b>Hp/Kw</b>	135.00 (hp), 99.22 (kw)
<b>Asking price</b>	sold (VAT )	<b>Lying</b>	at sales office

## CONTACT

<b>Sales office</b>	De Valk Sneek	<b>Telephone</b>	+31 (0)515 42 80 30
<b>Address</b>	Zwolsmanweg 7 8606 KC Sneek NL	<b>E-mail</b>	sneek@devalk.nl

## DISCLAIMER

These particulars are given in good faith as supplied but cannot be guaranteed.



## GENERAL

Model	ALMKOTTER 1280 AK
Type	motor yacht
LOA (m)	13,00
Beam (m)	4,35
Draft (m)	1,30
Air draft (m)	8,40
Air draft min (m)	3,20
Headroom (m)	2,00
Year built	2001
Builder	Jacht en Scheepsbouw De Alm, Werkendam
Country	The Netherlands
Displacement (t)	21
CE norm	B
Hull material	steel
Hull colour	blue
Hull thickness (mm)	5
Hull shape	multi hard chine
Superstructure material	steel
Superstructure (mm)	4
Deck plate thickness (mm)	4
Rubbing strake	rubber
Deck material	steel
Deck finish	teak
Superstructure deck finish	paint
Cockpit deck finish	teak
Antifouling (year)	2021
Dorades	yes
Window frame	aluminium
Window material	double glazing Rhigo Dubrit
Deckhatch	yes



# ALMKOTTER 1280 AK

<b>Portholes</b>	
<b>Insulation</b>	rockwool
<b>Mast can be lowered</b>	manual
<b>Fuel tank (litre)</b>	steel 1.300
<b>Level indicator (fuel tank)</b>	yes
<b>Fuel daytank (litre)</b>	steel 100
<b>Level indicator (daytank)</b>	yes
<b>Freshwater tank (litre)</b>	stainless steel Ca 950
<b>Level indicator (freshwater)</b>	yes
<b>Blackwater tank (litre)</b>	stainless steel Ca 340
<b>Level indicator (blackwater)</b>	yes
<b>Blackwater tank extraction</b>	deck extraction + pump
<b>Wheel steering</b>	hydraulic
<b>Inside helm position</b>	yes
<b>Outside helm position</b>	hydraulic
<b>More info on paintwork</b>	Romp geschilderd in 2019 (2-componenten verf)

## ACCOMMODATION

<b>Cabins</b>	2
<b>Berths</b>	4
<b>Interior</b>	cherry
<b>Floor</b>	carpet
<b>Aft deck</b>	yes
<b>Saloon</b>	yes
<b>Headroom saloon (m)</b>	2,0
<b>Heating</b>	central heating Kabola B-12 Tap (14kW/230V)
<b>Aft Cabin</b>	yes
<b>Opening door to aft deck</b>	yes
<b>Galley</b>	yes
<b>Countertop</b>	corian
<b>Sink</b>	stainless steel



# ALMKOTTER 1280 AK

Cooker	electric Pelgrim 4-pits
Extractor	Pelgrim
Microwave/oven combi	LG
Fridge	2 x Zanker 144ltr.
Freezer	1x in fridge
Hot water system	220V/engine/heating
Water pressure system	electrical Hydrofoor (03-08-2020)
Owners cabin	French bed
Bed length (m)	2,0
Wardrobe	hanging/drawers/shelves
Bathroom	en suite
Toilet	en suite
Toilet system	electric
Guest cabin 1	v-bed
Bed length (m)	2,0
Toilet	shared
Toilet system	electric
Washing machine/dryer combi	Indesit (22-10-2020)
Extra info	Waterdesinfector UVIDIS Ultraviolet 15W/230V/50Hz

## MACHINERY

No of engines	1
Make	Perkins Sabre
Type	M135
HP	135
kW	99,22
Fuel	diesel
Year installed	2001
Maximum speed (kn)	9
Cruising speed (kn)	8
Consumption (l/hr)	8,5



# ALMKOTTER 1280 AK

Engine hours	3900
Engine cooling system	freshwater heat exchanger
Drive	shaft
Engine controls	bowden cable
Gearbox	ZF Hurth Marine HSW 450A2 2,0R
Bowthruster	electric
Exhaust	watercooled
Propeller type	fixed
Propeller shaft material	steel
Shaft lubrication	water
Electric bilge pump	yes
Electrical installation	12V/24V/230V
Generator	silent separator Kohler 8 kVA
Batteries	6x 200 Ah
Start battery	1
Generator battery	1
Bowthruster battery	1
Battery monitor	Mastervolt Power System Control Panel Mastervolt BTM-III
Battery charger	Mastervolt 50 Amp.
Inverter	Mastervolt 2500 W.
Shorepower	with cable

## NAVIGATION

Depth sounder/log	Raymarine ST60 Tridata
Windset	Raymarine ST60
VHF	Simrad RS8300 GMDSS
Autopilot	Raytheon ST6000+ 2x
Rudder angle indicator	Raymarine ST60+
Radar	Raymarine
GPS	Raymarine
Plotter	Raymarine E120



Navtex	ICS NAV6
Navigation lights	yes
Searchlight	yes

## EQUIPMENT

Boarding ladder	stainless steel
Anchor	
Anchor chain	yes
Windlass	electrical
Davits	stainless steel
Sea railing	stainless steel
Grab rail (superstructure)	stainless steel
Railing side opening gates	yes
Wiper	3x
Horn	electric
Radar reflector	yes
Fenders	yes
Mooring lines	yes
TV	2x flatscreen
Radio-cd player	yes
Surround Sound System	Bose
Speakers in salon	yes
Clock - barometer	yes
Fire extinguisher	yes
Extinguisher in engine room	yes
Auto extinguisher system	yes



# ALMKOTTER 1280 AK





# ALMKOTTER 1280 AK



# ALMKOTTER 1280 AK



# ALMKOTTER 1280 AK





# ALMKOTTER 1280 AK

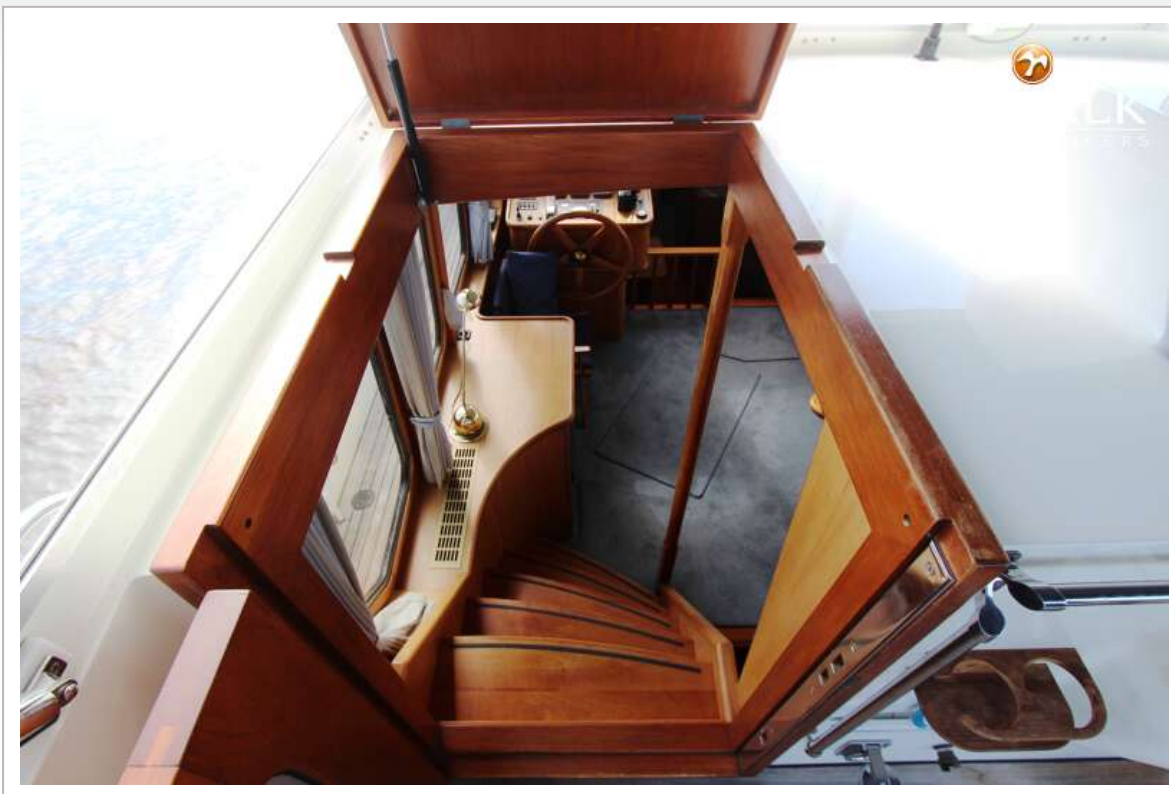


# ALMKOTTER 1280 AK





# ALMKOTTER 1280 AK

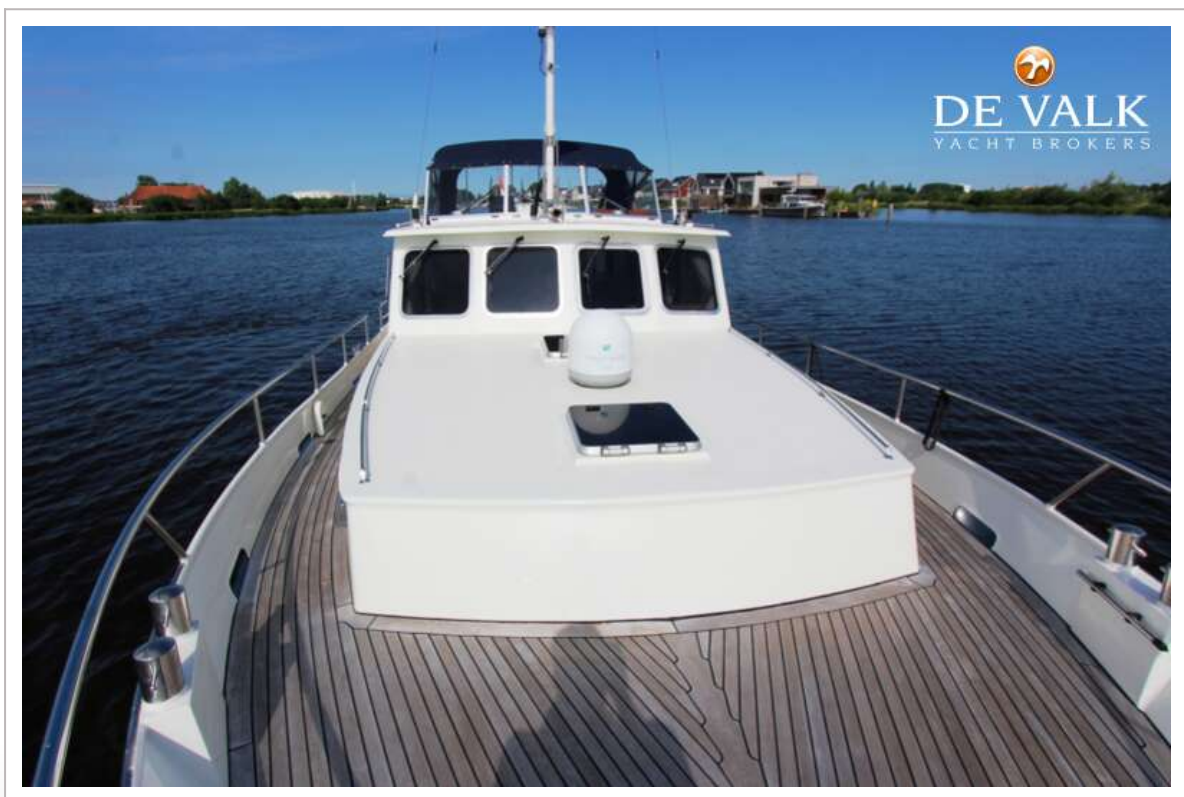


# ALMKOTTER 1280 AK



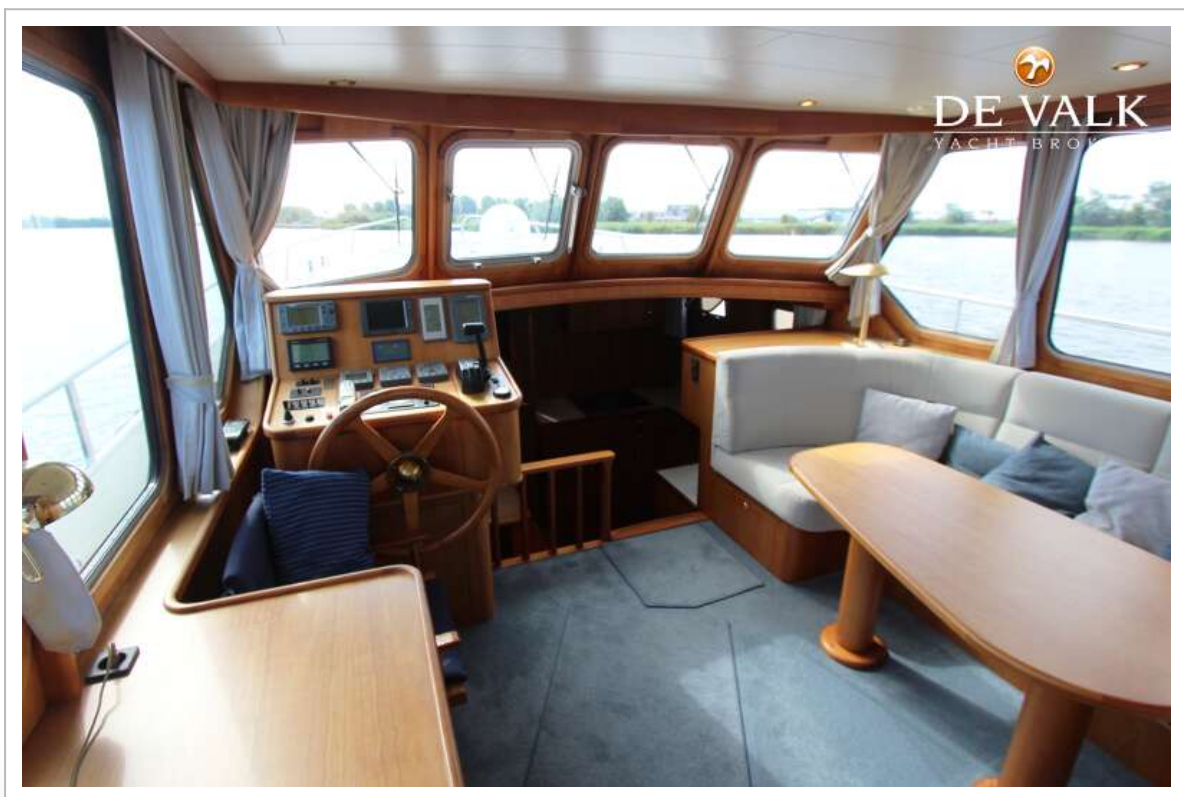


# ALMKOTTER 1280 AK





# ALMKOTTER 1280 AK



# ALMKOTTER 1280 AK

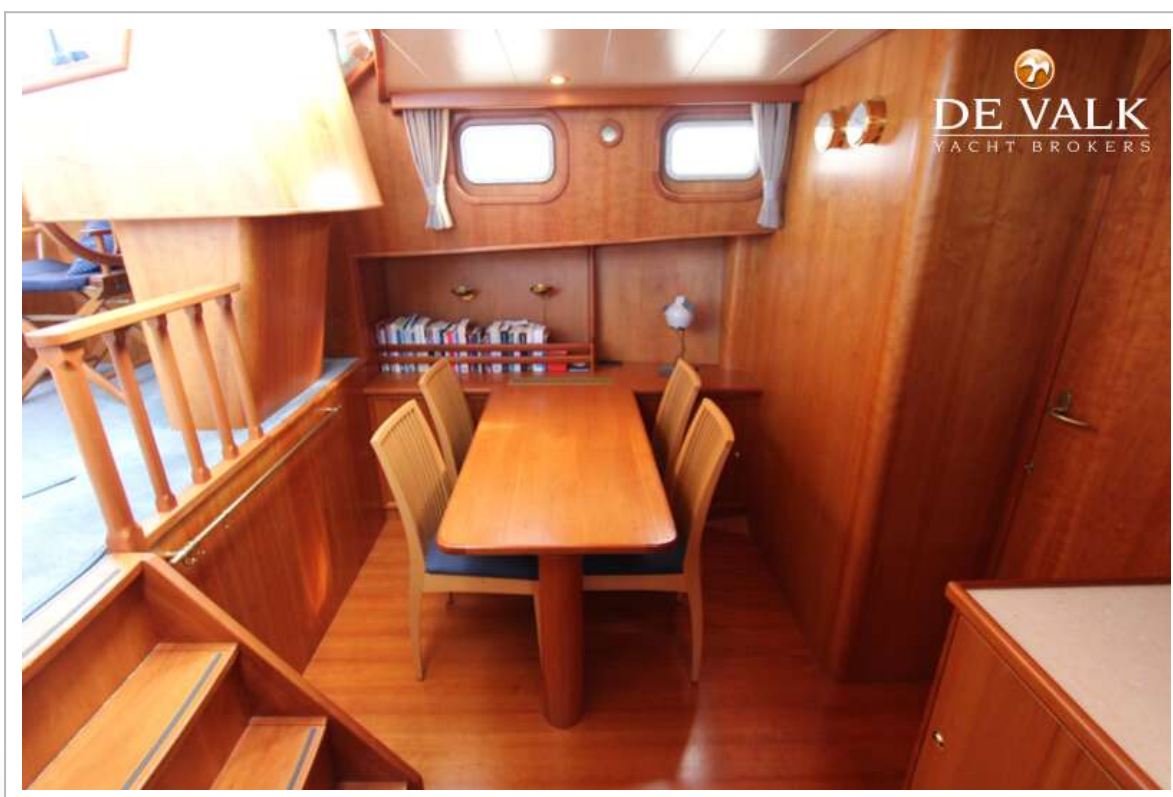
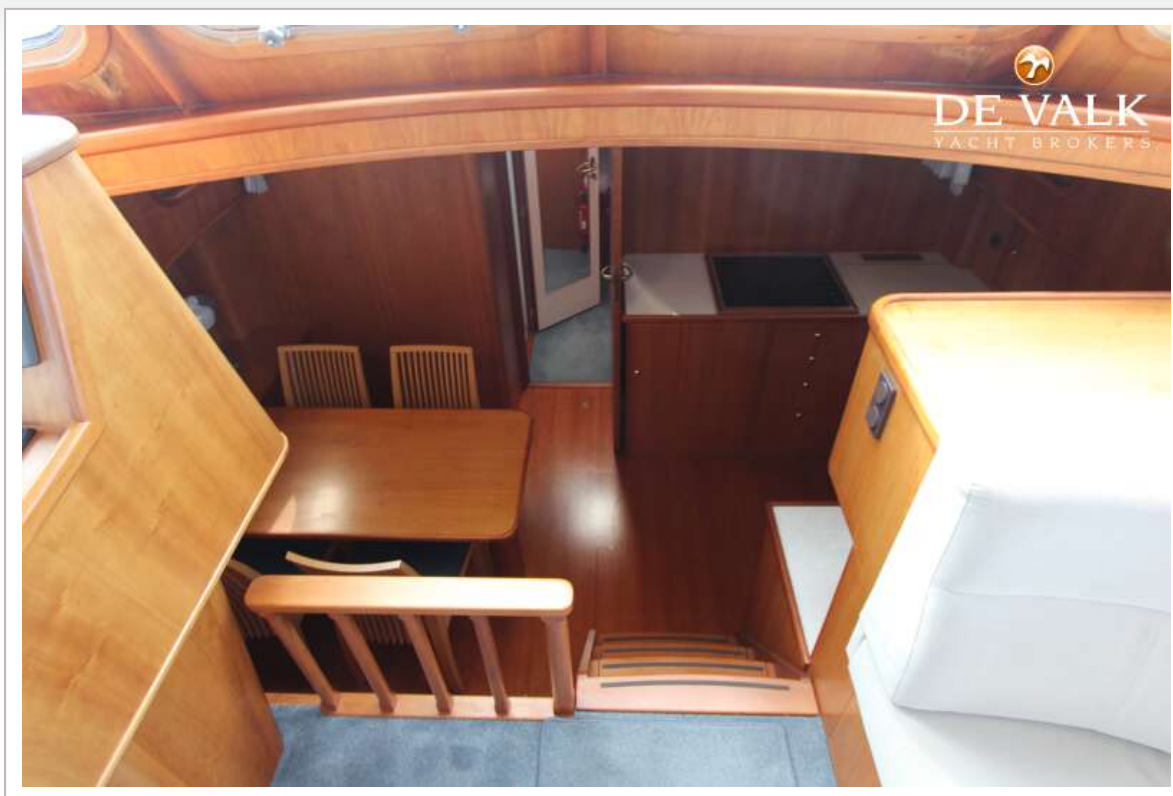




# ALMKOTTER 1280 AK



# ALMKOTTER 1280 AK





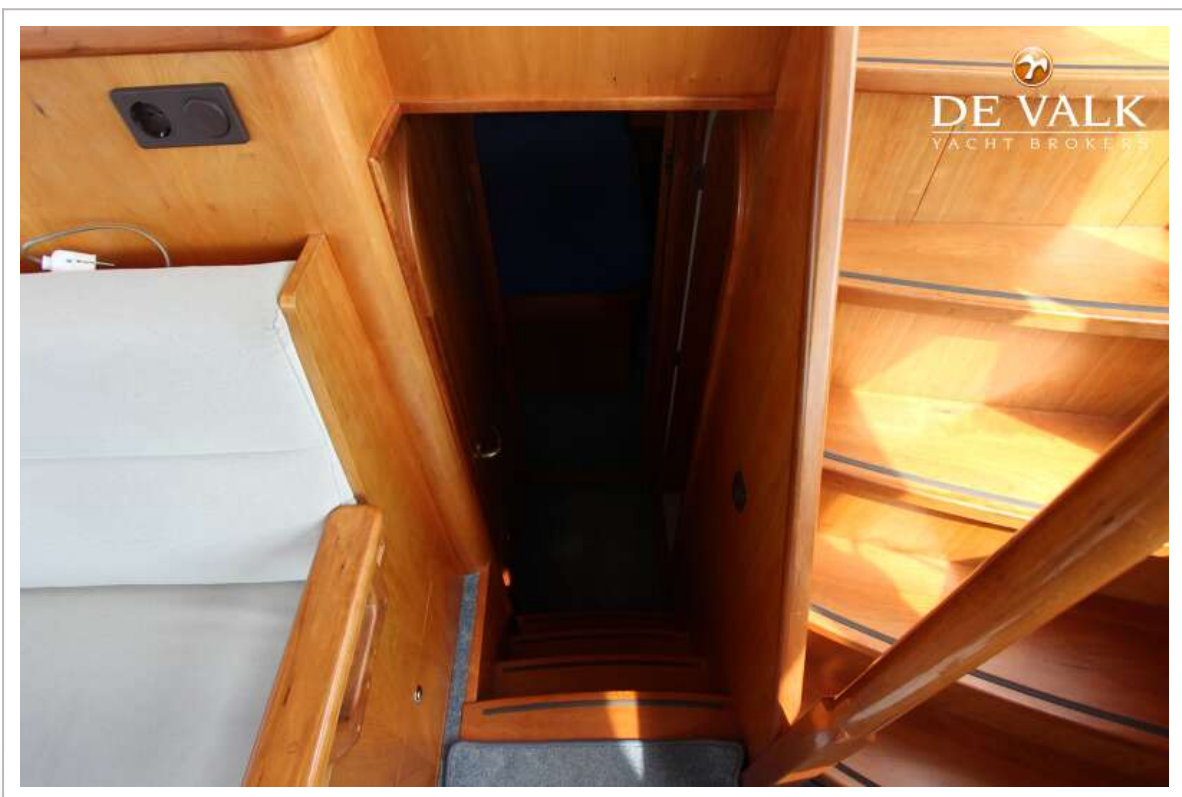
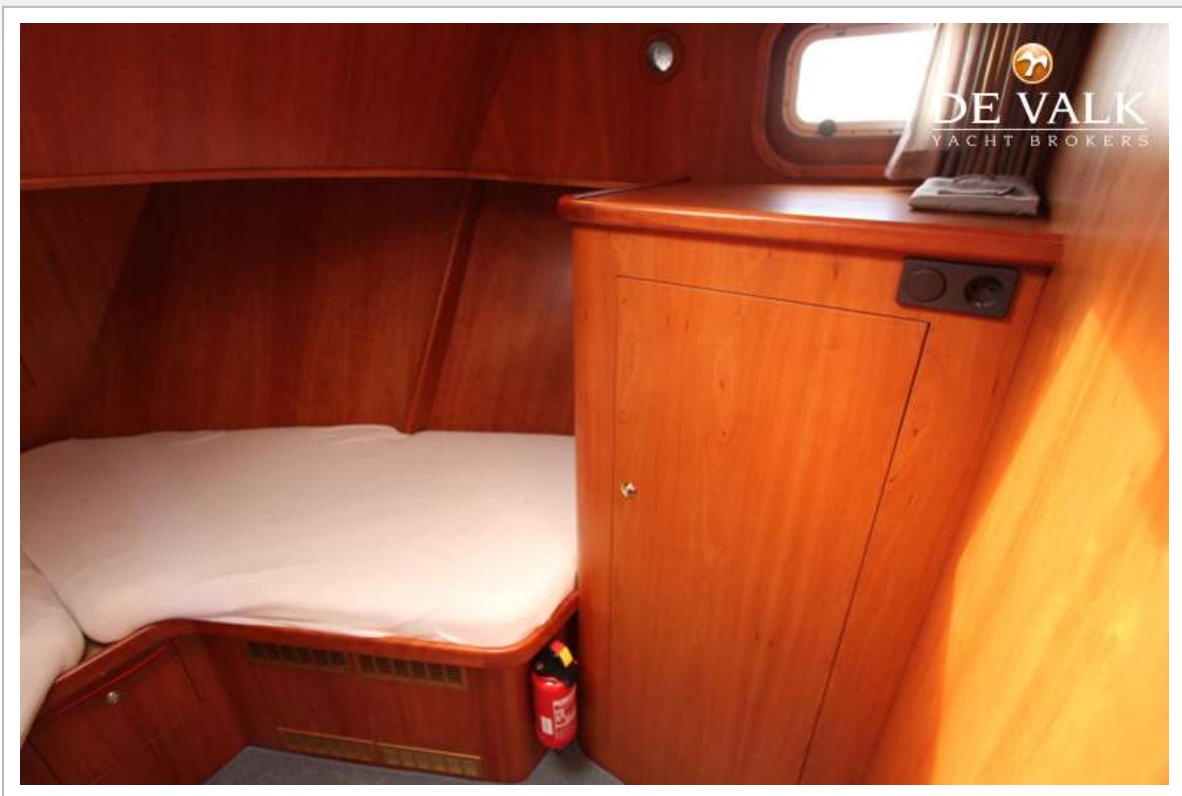
# ALMKOTTER 1280 AK



# ALMKOTTER 1280 AK

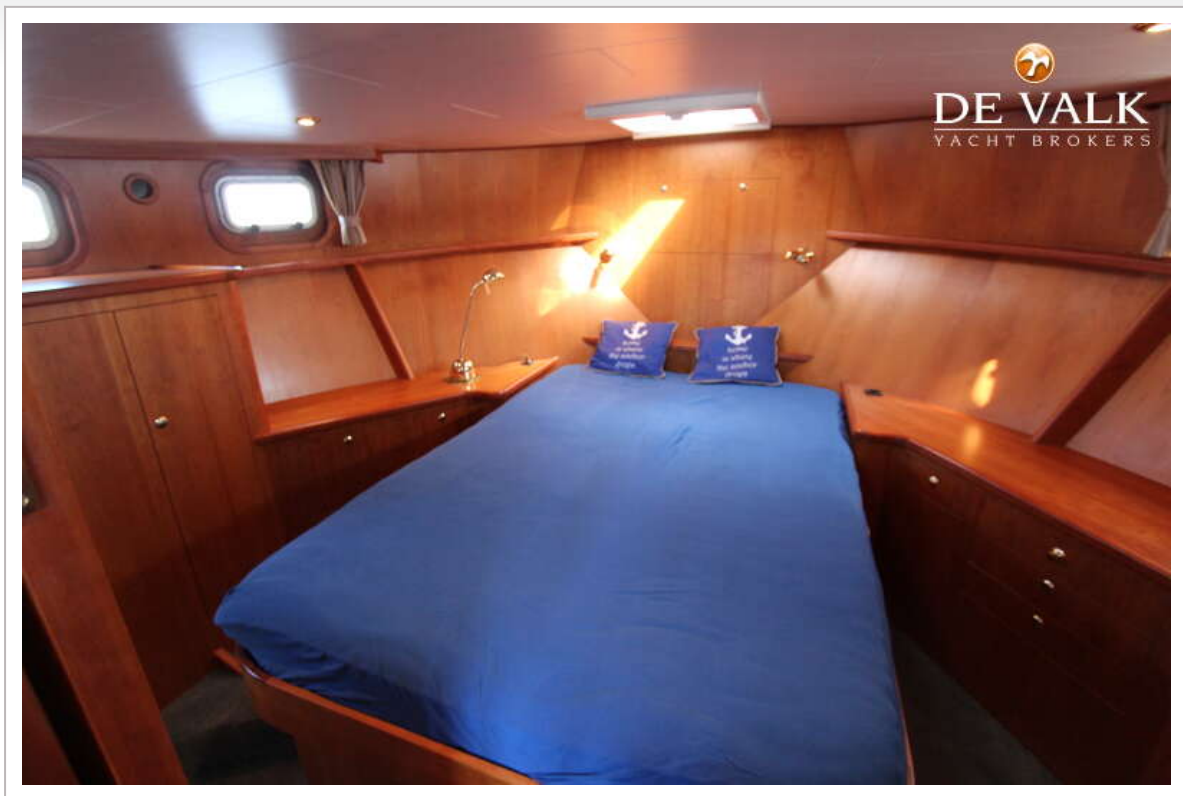


# ALMKOTTER 1280 AK





# ALMKOTTER 1280 AK

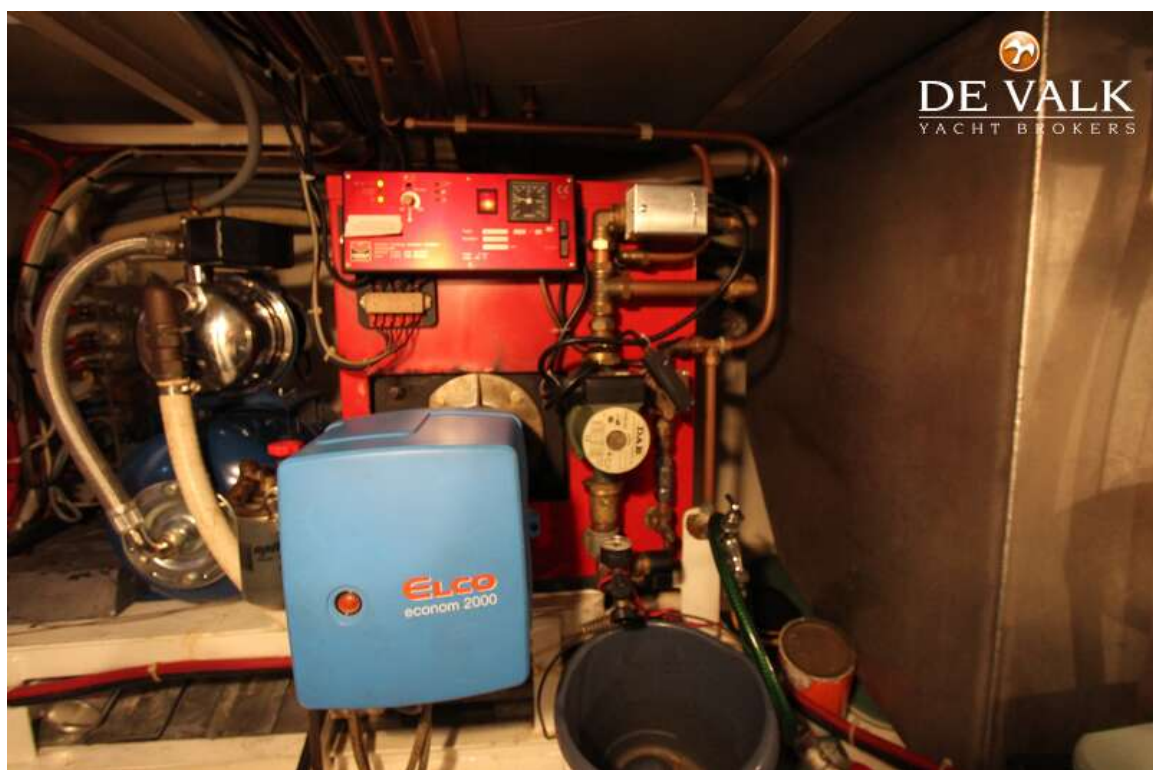
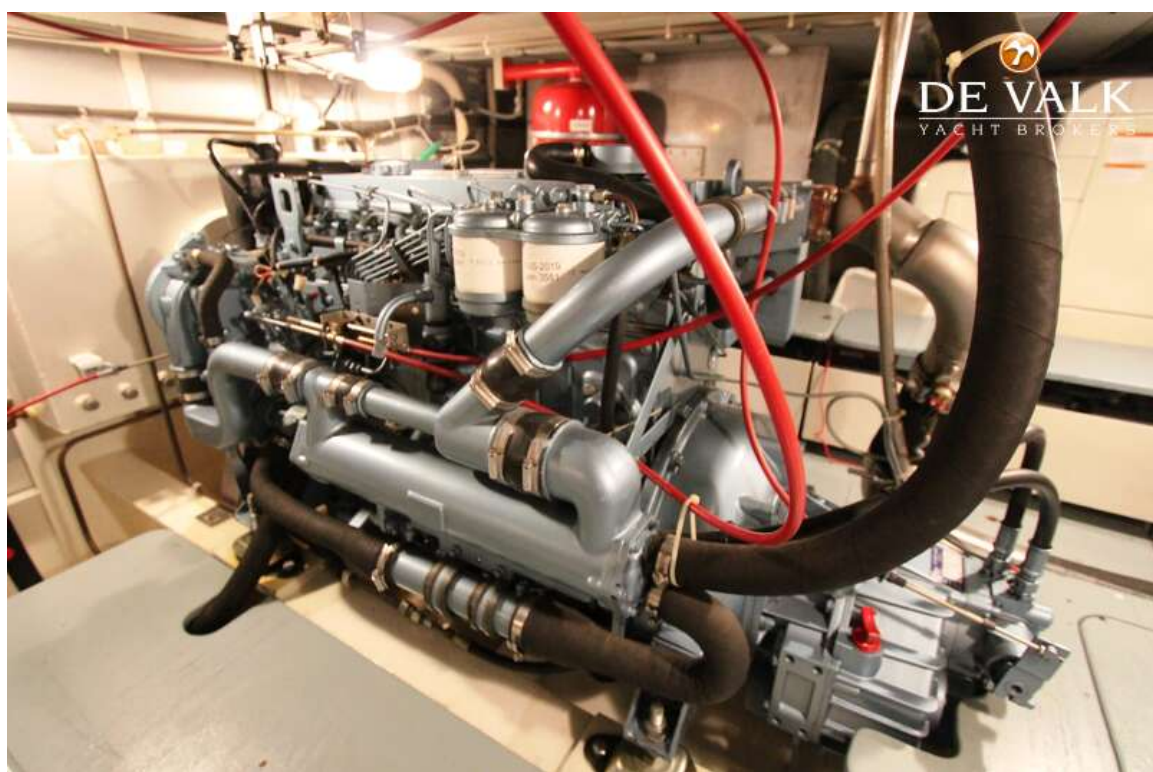




# ALMKOTTER 1280 AK



# ALMKOTTER 1280 AK





# ALMKOTTER 1280 AK



