



TRADER 42

TRADER 42

BROKER'S COMMENTS

GRP motoryacht Trader 42. Well known design by Tony Castro. Roomy teak finished interior, tastefully designed saloon, 3 x large cabins with their own toilet facilities. Comfortable helmposition at roomy aft deck. With her CE-A perfect for blue water sailing and due her low airdraft (3,50) suitable for the France water ways. Offered in new condition.

Arjen Hoeksma

SPECIFICATIONS

Dimensions	13.30 x 4.30 x 1.20 (m)	Builder	Trader Motoryachts
Built	2008	Cabins	3
Material	GRP	Berths	6
Engine(s)	2 x CUMMINS QSB5,9 Diesel	Hp/Kw	2 x 380.00 (hp), 279.30 (kw)
Asking price	sold (VAT)	Lying	at sales office

CONTACT

Sales office	De Valk Loosdrecht B.V.	Telephone	+31 (0)35 582 90 30
Address	't Breukeleveense Meentje 6 1231LM Loosdrecht / Wijdmeren NL	E-mail	loosdrecht@devalk.nl

DISCLAIMER

These particulars are given in good faith as supplied but cannot be guaranteed.



GENERAL

Model	TRADER 42
Type	motor yacht
LOA (m)	13,30
Beam (m)	4,30
Draft (m)	1,20
Air draft (m)	3,50
Year built	2008
Builder	Trader Motoryachts
Displacement (t)	13,8
CE norm	A
Hull material	GRP
Hull colour	white
Superstructure material	GRP
Deck finish	teak
Cockpit deck finish	teak
Antifouling (year)	2015
Portholes	stainless steel All cabins
Radar arch	collapsible
Fuel tank (litre)	steel 1,700
Level indicator (fuel tank)	yes
Freshwater tank (litre)	steel 600
Level indicator (freshwater)	yes
Blackwater tank (litre)	230
Level indicator (blackwater)	yes
Wheel steering	hydraulic
Outside helm position	hydraulic

ACCOMMODATION

Cabins	3
Berths	6



Interior	teak
Floor	parquet
Aft deck	yes
Headroom saloon (m)	2,00
Heating	diesel ducted hot air
Aft Cabin	yes
Sliding door to cockpit	yes
Galley	yes
Countertop	corian
Sink	stainless steel
Cooker	ceramic
Oven	yes
Microwave	Combi
Fridge	yes
Freezer	yes
Hot water system	220V + engine 50l.
Water pressure system	electrical
Owners cabin	yes
Wardrobe	yes
Bathroom	yes
Toilet	yes
Toilet system	electric
Guest cabin 1	yes
Wardrobe	yes
Bathroom	yes
Toilet	yes
Toilet system	electric

MACHINERY

No of engines	2
Make	CUMMINS



Type	QSB5,9
HP	380,00
kW	279,30
Fuel	diesel
Year installed	2008
Maximum speed (kn)	24
Cruising speed (kn)	8
Consumption (l/hr)	12
Engine hours	985 (15-2-2016)
Drive	shaft
Engine controls	electrical
Gearbox	hydraulic
Bowthruster	electric 8hp
Propeller shaft material	stainless steel
Shaft lubrication	water
Manual bilge pump	yes
Electric bilge pump	yes
Generator	wet exhaust Mastervolt 6 Kw
Start battery	Mastervolt 200Ah (1)
Service battery	Mastervolt 400Ah (2)
Battery monitor	yes
Battery charger/inverter	Mastervolt 12V/2000W/100A
Shorepower	yes
Trimtabs	yes

NAVIGATION

Compass	yes
Depth sounder	yes
Log	yes
VHF	Raymarine 240E
Autopilot	Raymarine ST6000



Rudder angle indicator	yes
Radar	yes
GPS	Raymarine C-80
AIS receiver	yes
Searchlight	yes
Extra info	Remote control Hydronautica

EQUIPMENT

Sprayhood	yes
Cockpit cover	2016
Cockpit cushions	yes
Cockpit table	yes
Bathing platform	yes
Boarding ladder	stainless steel
Anchor	CQR Plough 27kg
Anchor chain	60 meter stainless steel
Windlass	electrical
Deck wash	yes
Davits	stainless steel Electric
Sea railing	stainless steel
Wiper	yes
Horn	yes
Fenders	yes
Mooring lines	yes
TV	yes
Radio-cd player	yes
Cockpit speakers	yes
Speakers in salon	yes
Extra info	Aft deck cover



TRADER 42



TRADER 42



TRADER 42



TRADER 42



TRADER 42



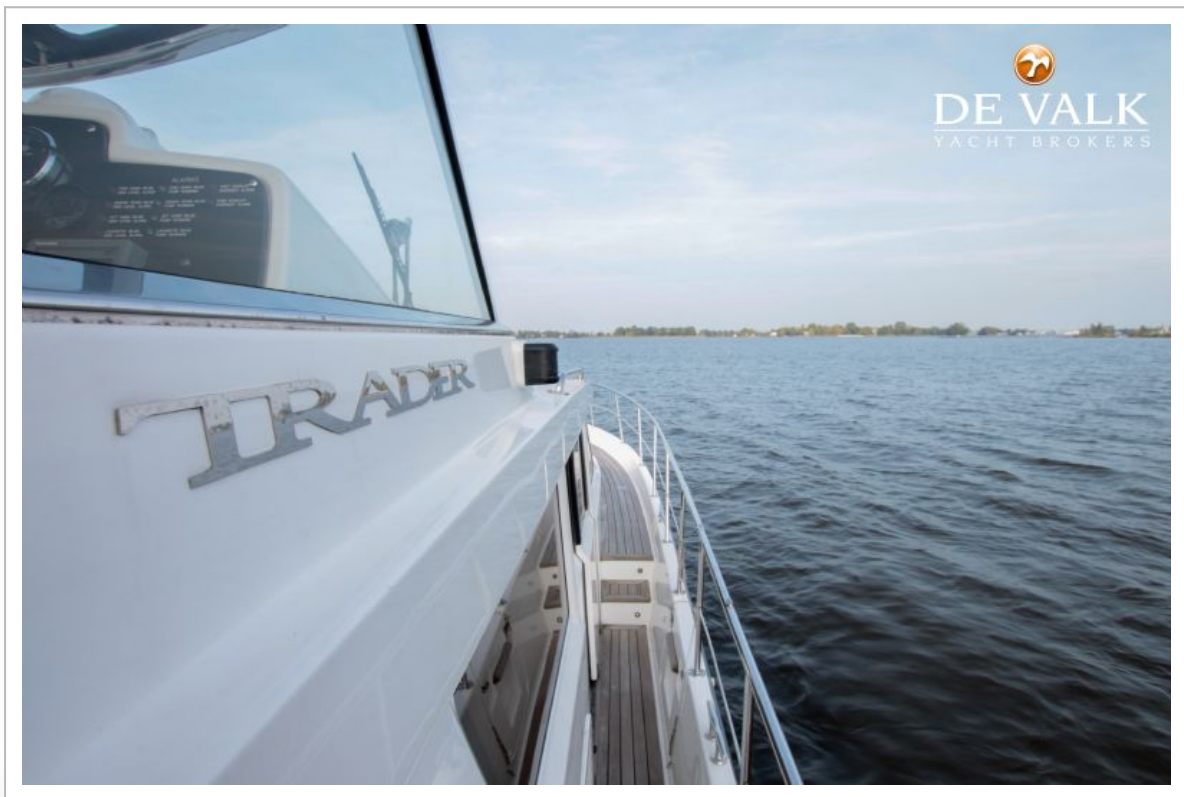
TRADER 42



TRADER 42



TRADER 42



TRADER 42

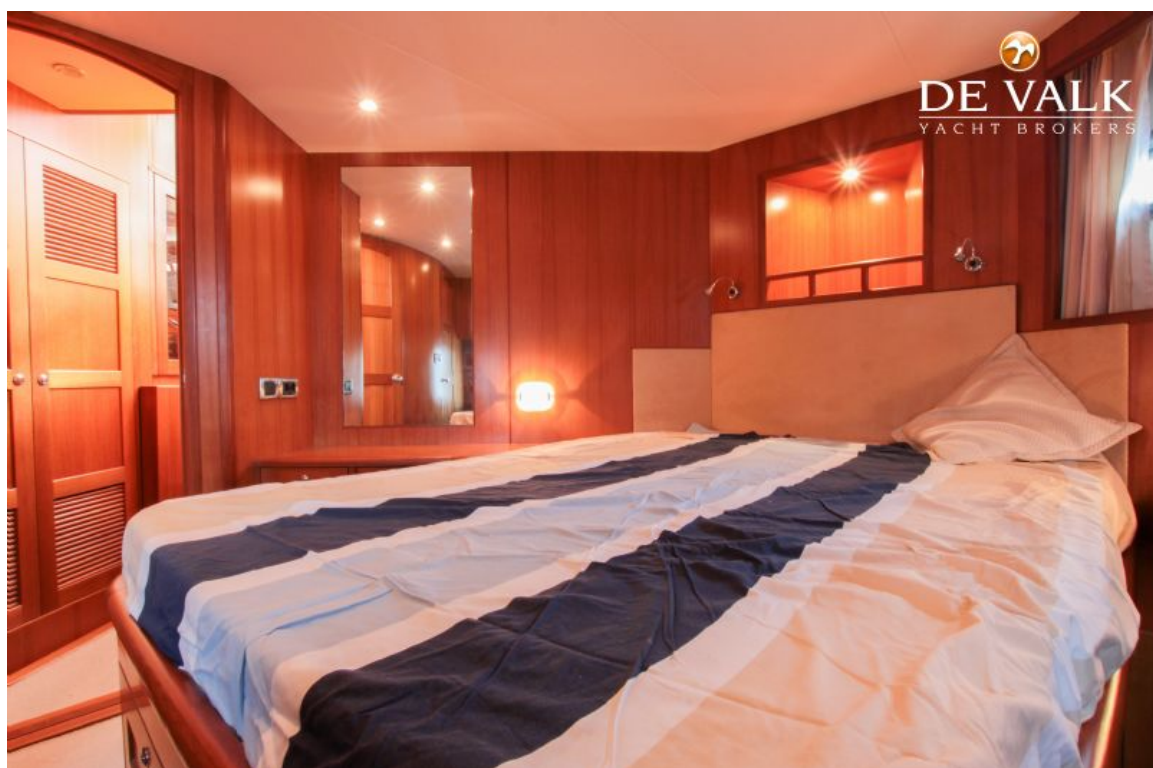
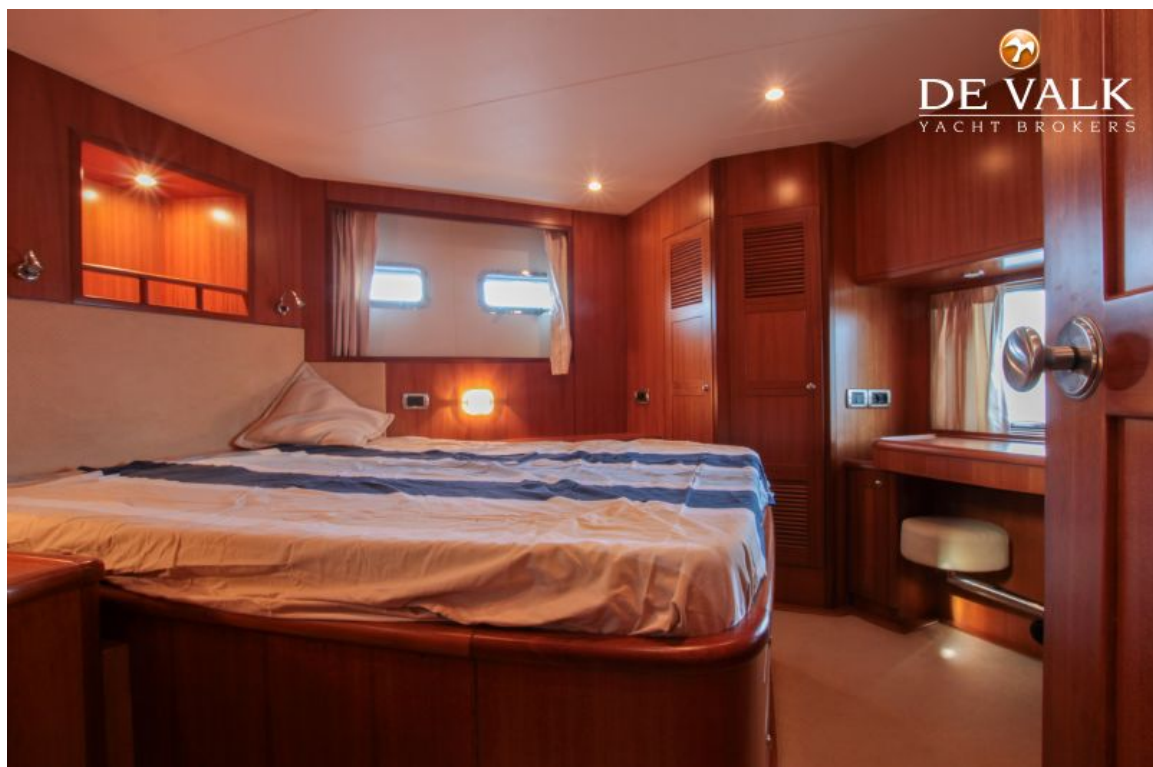


TRADER 42

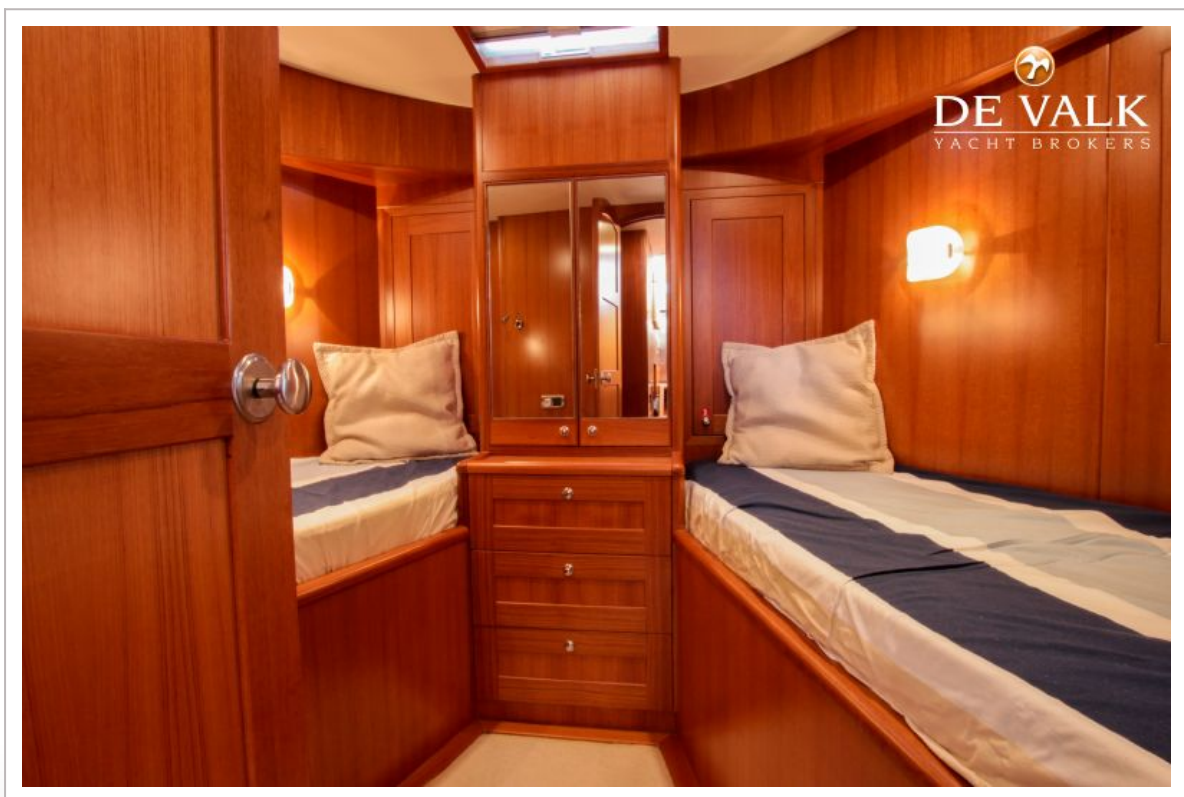
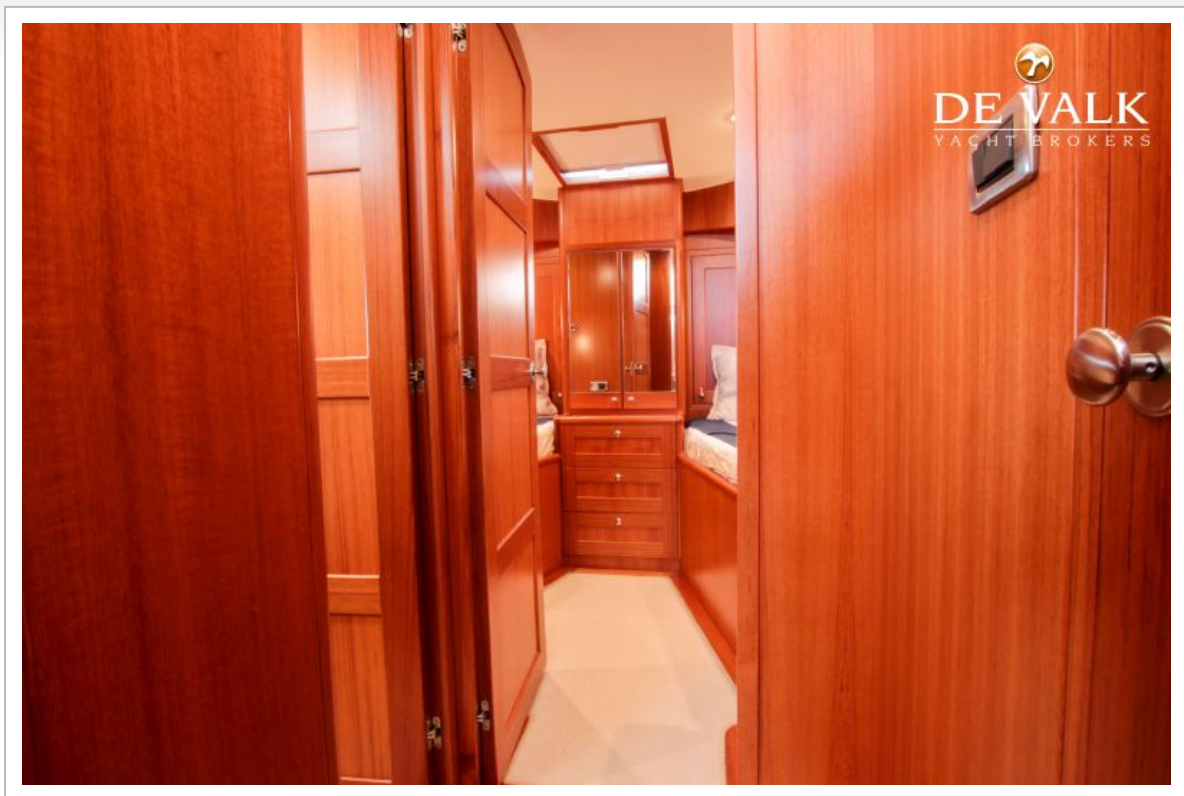


TRADER 42

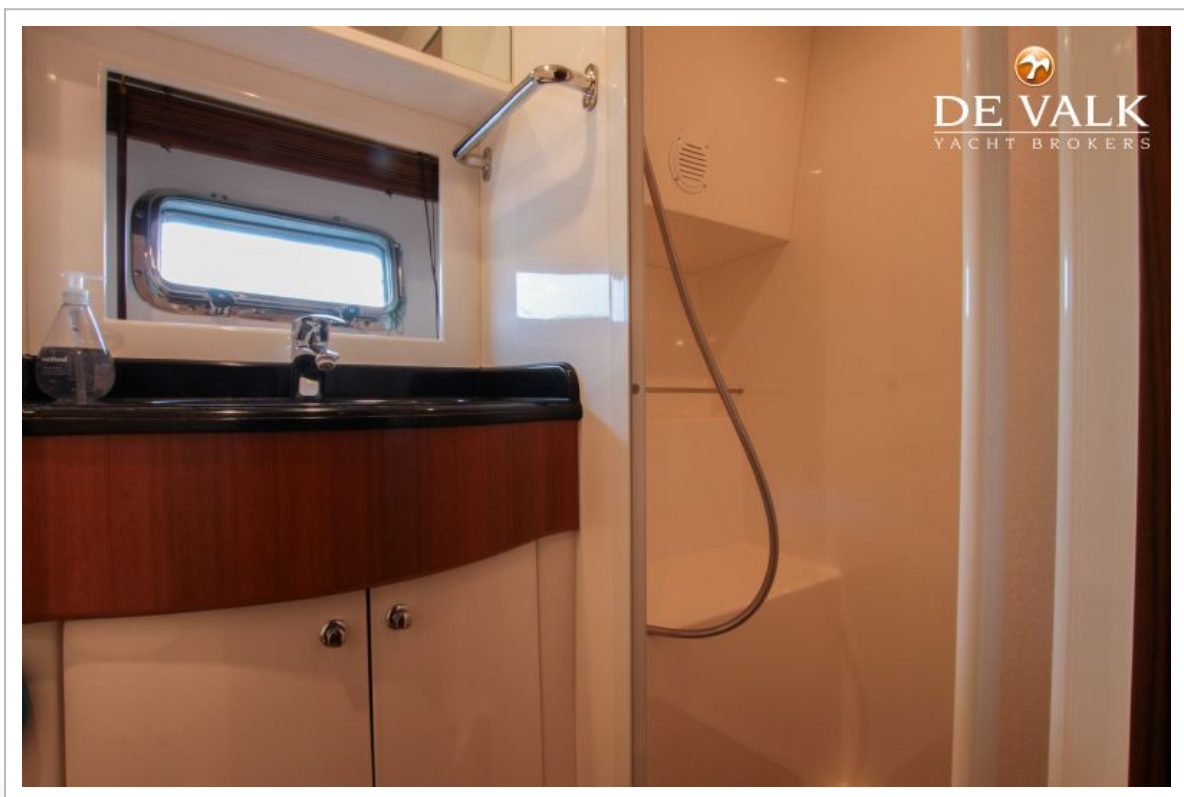








TRADER 42



TRADER 42

