



TUNA 40 SPORTIVO

TUNA 40 SPORTIVO

BROKER'S COMMENTS

This one owner Tuna 40 Sportivo is a true wonder of space utilisation. Fitted with a large comfortable cockpit, an enclosed deck saloon with electric sliding roof, 3 cabins with 6 berths, a roomy bathroom with a separate shower compartment and a well equipped galley. All this in a 40 foot yacht that is fitted with twin Volvo Penta IPS diesel engines for excellent performance and manoeuvrability. With an extensive specification and excellent workmanship and attention to detail this Tuna is a 'must see'!

Nick Lanting

SPECIFICATIONS

Dimensions	12.20 x 4.35 x 1.20 (m)	Builder	Dutch Bay Composite Yachts
Built	2009	Cabins	3
Material	GRP	Berths	6
Engine(s)	2 x Volvo Penta IPS 400 EVC diesel	Hp/Kw	2 x 310.00 (hp), 227.85 (kw)
Asking price	sold (VAT)	Lying	at sales office

CONTACT

Sales office	De Valk Sint Annaland B.V.	Telephone	+31 (0)166 601 000
Address	Koelhuisweg 4 4697 RM Sint Annaland NL	E-mail	sintannaland@devalk.nl

DISCLAIMER

These particulars are given in good faith as supplied but cannot be guaranteed.



TUNA 40 SPORTIVO

GENERAL

Model	TUNA 40 SPORTIVO
Type	motor yacht
LOA (m)	12,20
Beam (m)	4,35
Draft (m)	1,20
Headroom (m)	1,93
Year built	2009
Launched	2009
Builder	Dutch Bay Composite Yachts
Country	Turkey
Displacement (t)	11
CE norm	B
Hull material	GRP
Hull shape	multi hard chine
Superstructure material	GRP
Rubbing strake	rubber Hakorite
Deck material	GRP
Deck finish	teak
Superstructure deck finish	non-skid paint
Cockpit deck finish	teak
Window material	tempered glass
Deckhatch	yes
Portholes	stainless steel 4 x
Insulation	yes
Radar arch	collapsible
Fuel tank (litre)	1600
Level indicator (fuel tank)	yes
Freshwater tank (litre)	500
Level indicator (freshwater)	yes
Blackwater tank (litre)	150



Level indicator (blackwater)	yes
Blackwater tank extraction	deck extraction + uw line
Wheel steering	hydraulic
Inside helm position	yes
More info on hull	cream colour
Extra info	maximum load 2000 kg / 12 person

ACCOMMODATION

Cabins	3
Berths	6
Interior	teak
Floor	teak and holly
Open cockpit	yes
Pilot house/deck saloon	Sunbrella upholstery
Headroom saloon (m)	1,93
Sliding roof	electric Webasto Hollandia
Heating	diesel ducted hot air Webasto
Chart table	yes
Dinette	Height adjustable table
Opening door to cockpit	yes
Galley	yes
Countertop	plastic
Sink	stainless steel
Cooker	electric Origo 3 burner
Extractor	yes
Microwave/oven combi	Kenwood
Fridge	Isotherm 150 l
Freezer	Isotherm 50 l
Hot water system	220V + engine 60 l boiler
Water pressure system	electrical
Owners cabin	double bed



TUNA 40 SPORTIVO

Bed length (m)	Neptune matras + lattenbodem 2,00 x 1,90
Wardrobe	hanging/drawers/shelves
Bathroom	shared
Toilet	shared
Toilet system	electric
Wash basin	in the bathroom
Shower	separate
Extra info	heating outlet
Guest cabin 1	twin single
Bed length (m)	1,92 x 0,75 & 2,04 x 0,70
Wardrobe	hanging and shelves
Extra info	headroom 1,89 m
Guest cabin 2	double bed
Bed length (m)	2,00 x 1,40
Wardrobe	hanging and shelves
Extra info	yes
Extra info	headroom below deck 1,89 m
Extra info	heating outlet in deck saloon

MACHINERY

No of engines	2
Make	Volvo Penta
Type	IPS 400 EVC
HP	310,00
kW	227,85
Fuel	diesel
Year installed	2009
Maximum speed (kn)	30
Cruising speed (kn)	20
Consumption (l/hr)	70 @ cruising speed
Engine hours	751



TUNA 40 SPORTIVO

Engine cooling system	freshwater heat exchanger
Drive	IPS
Engine controls	electrical
Propeller type	fixed
Manual bilge pump	yes
Electric bilge pump	yes
Bilge alarm	yes
Electrical installation	12V / 220V
Generator	Fischer Panda 3,5 kW
Batteries	5
Start battery	2 x 120 Ah AGM
Service battery	2 x 200 Ah AGM
Generator battery	1 x 43 Ah Exide
Battery monitor	Victron BVM-600
Battery charger/inverter	Victron MultiPlus 120 A / 3000 W
Diode battery combiners	Victron Argofet
Shorepower	with cable
Trimtabs	Volvo Penta
Extra info	IPS joystick
Extra info	spare set of props
Extra info	electrically opening engineroom hatches

NAVIGATION

Depth sounder/log	Raymarine ST70
VHF	Raymarine Ray DSC240E
Autopilot	Raymarine ST70 IPS
Radar/GPS/plotter	Raymarine E120 / RD218
Camera	in engineroom & aft looking
Navigation lights	yes

EQUIPMENT



TUNA 40 SPORTIVO

Fixed windscreen	yes
Cockpit cover	yes
Cockpit cushions	with covers
Cockpit table	with stainless steel pedestal
Bathing platform	yes
Boarding ladder	stainless steel
Transom door	yes
Deck shower	yes
Anchor	Bruce Stainless steel/rvs/Edelstahl
Anchor chain	yes
Windlass	electrical Quick
Capstan	yes
Deck wash	yes
Sea railing	stainless steel
Grab rail (superstructure)	stainless steel
Pulpit	yes
Wiper	pantograph 2 x
Window heating	through engine heat exchanger
Horn	electric
Fenders	yes
Mooring lines	yes
TV	decksaloon & fwd cabin 2 x
Radio-cd player	JVC KD-8711
DVD player	JVC KD-8711
Speakers in salon	yes
Fire extinguisher	decksaloon & galley 2 x
Latest extinguisher survey	03/2014
Auto extinguisher system	engine room
Extra info	coachroof cushions
Extra info	windscreen sun blinds



TUNA 40 SPORTIVO



TUNA 40 SPORTIVO



TUNA 40 SPORTIVO



TUNA 40 SPORTIVO



TUNA 40 SPORTIVO



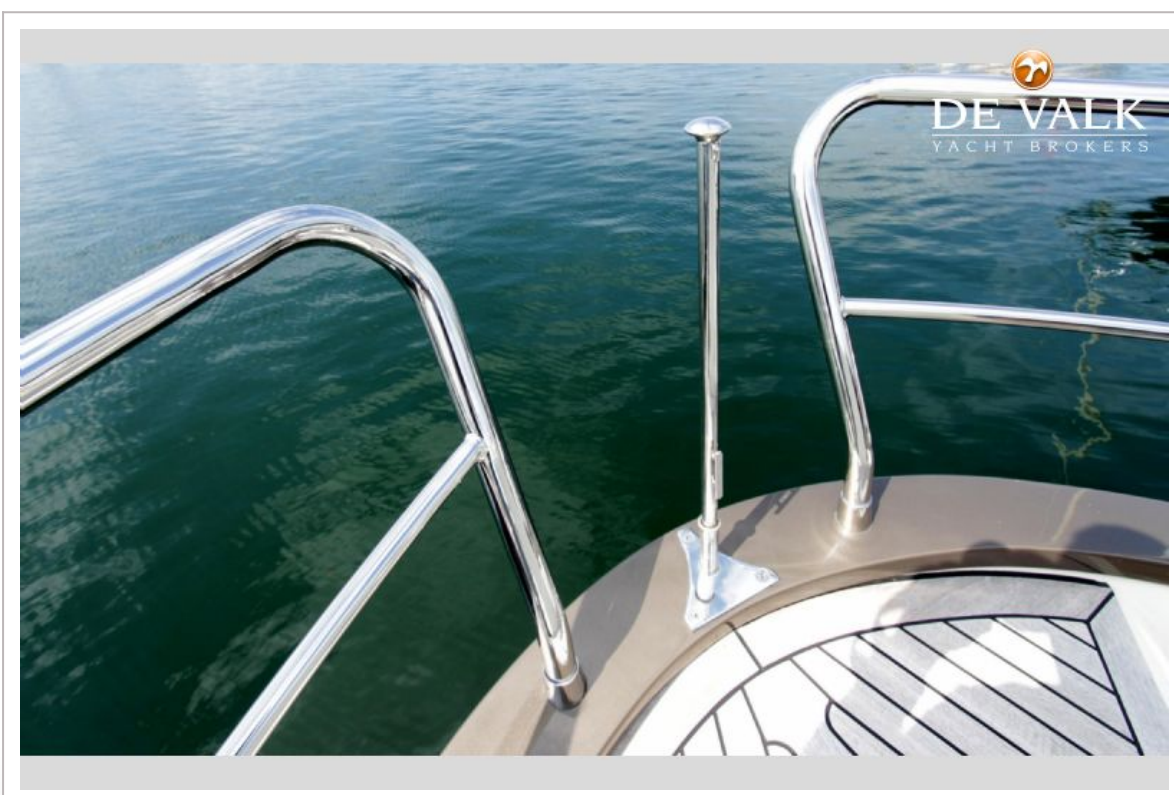
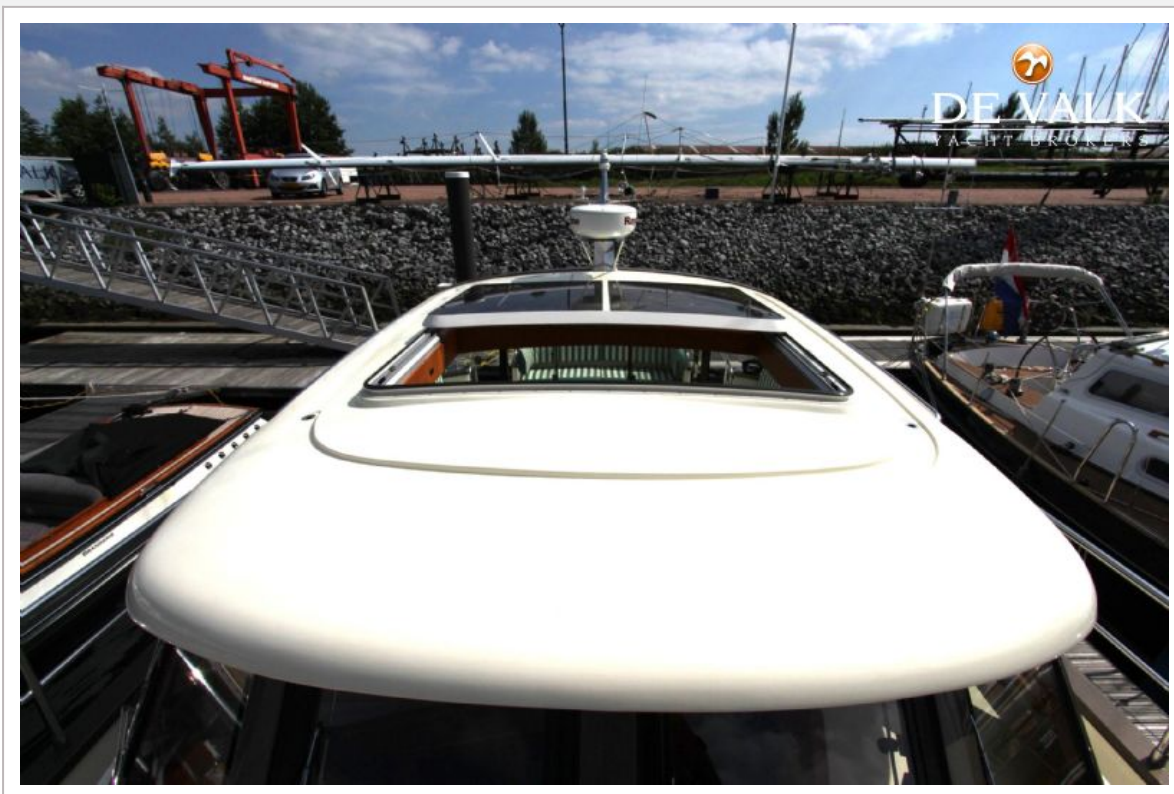
TUNA 40 SPORTIVO



TUNA 40 SPORTIVO



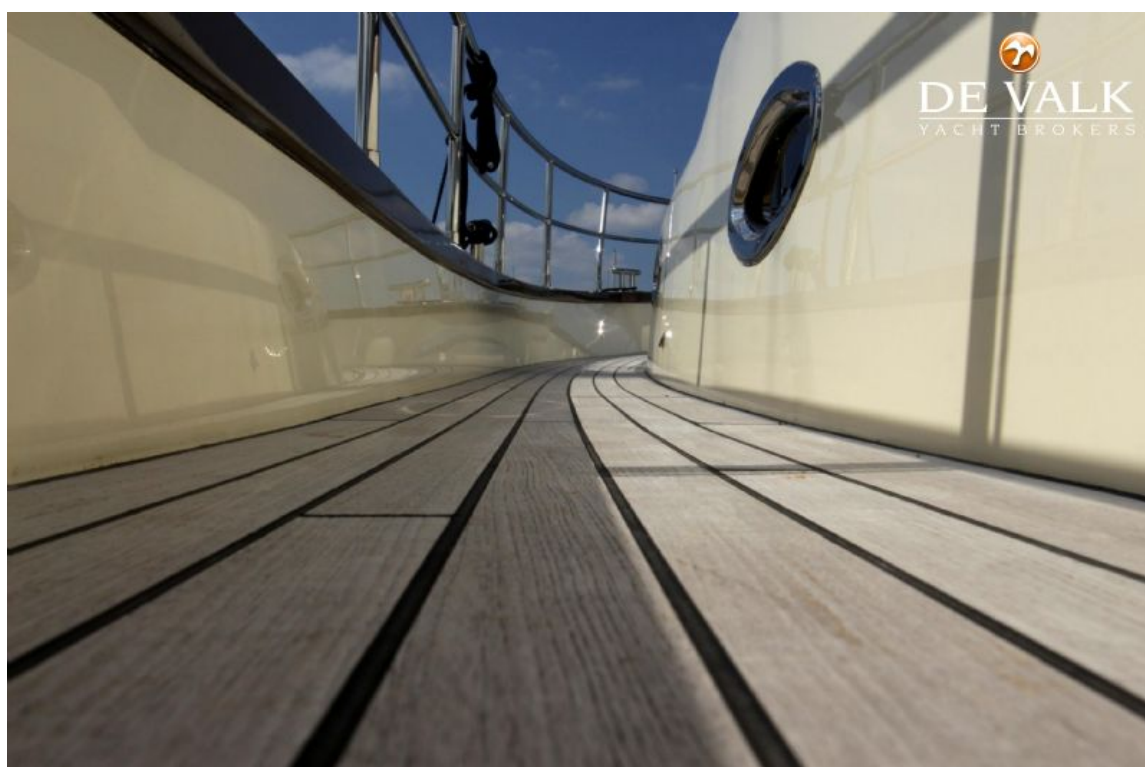
TUNA 40 SPORTIVO



TUNA 40 SPORTIVO



TUNA 40 SPORTIVO



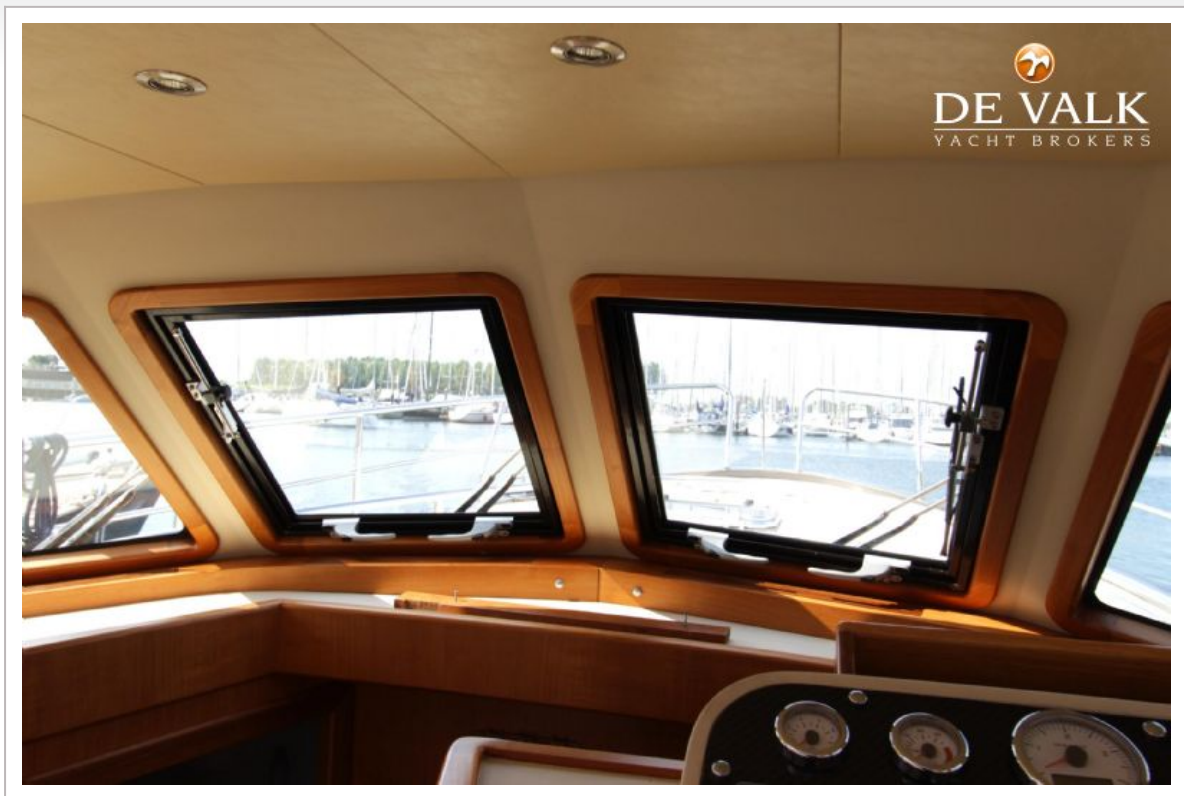
TUNA 40 SPORTIVO



TUNA 40 SPORTIVO



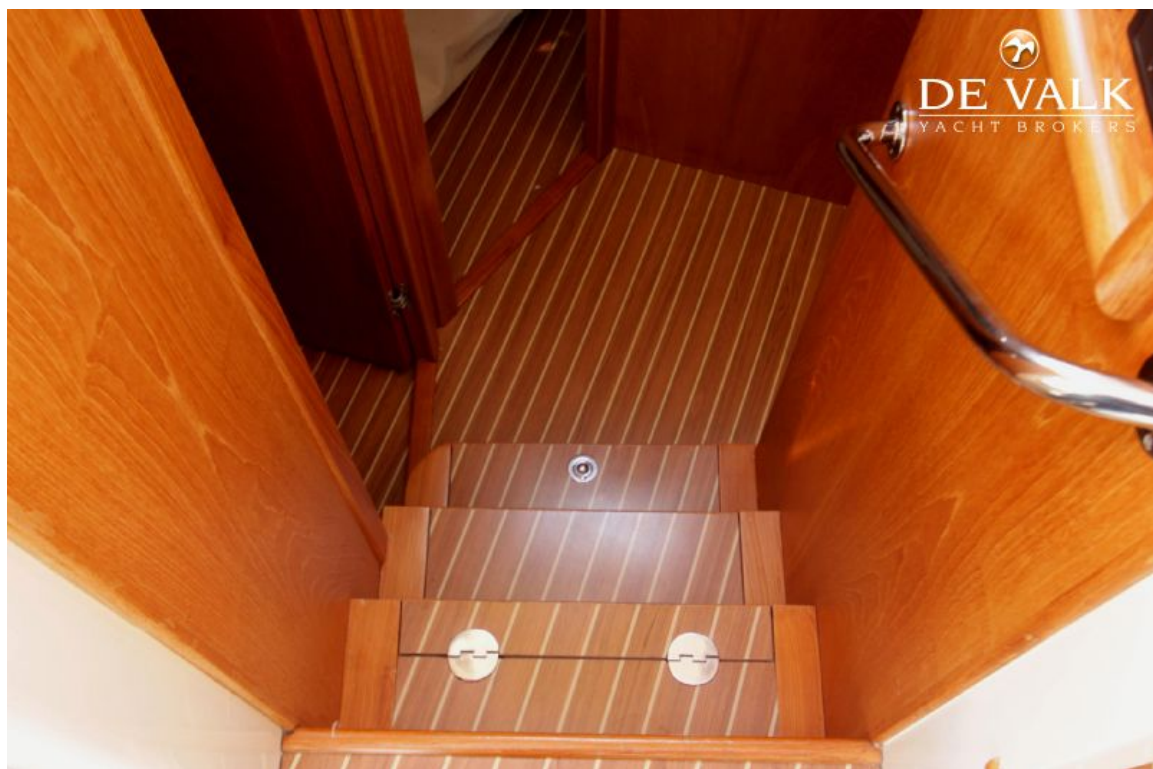
TUNA 40 SPORTIVO



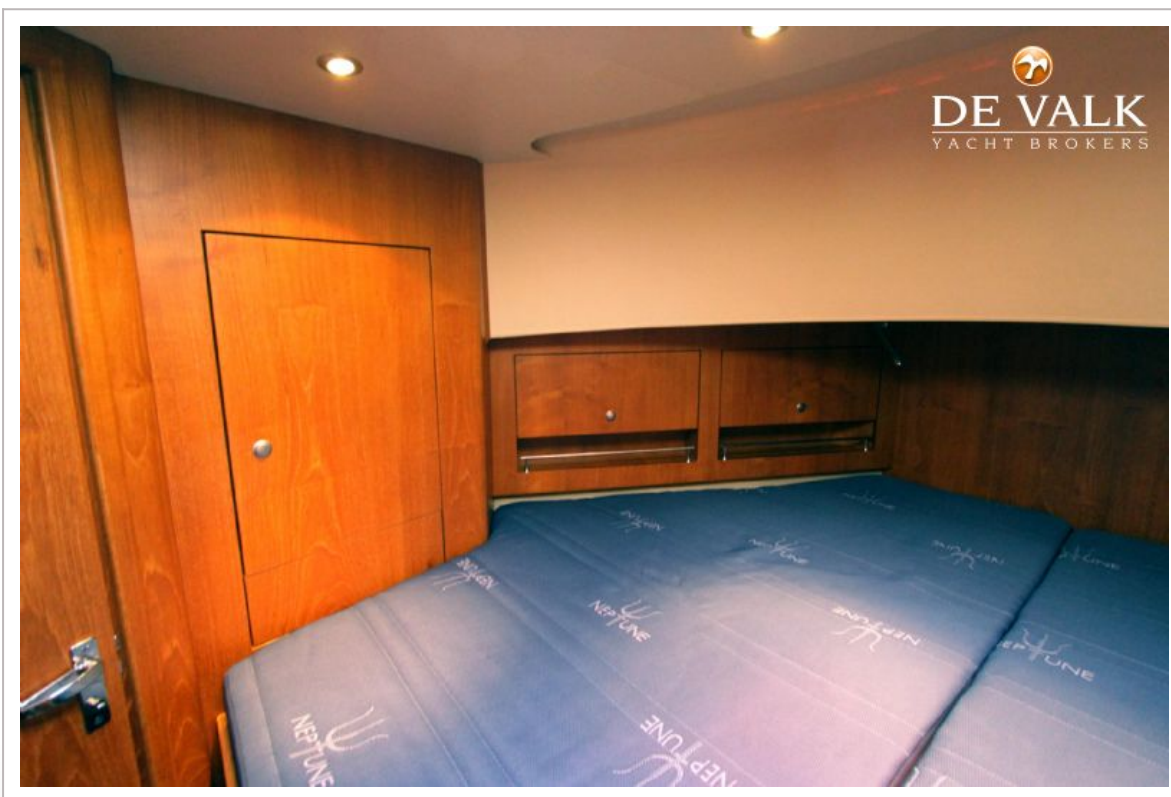
TUNA 40 SPORTIVO



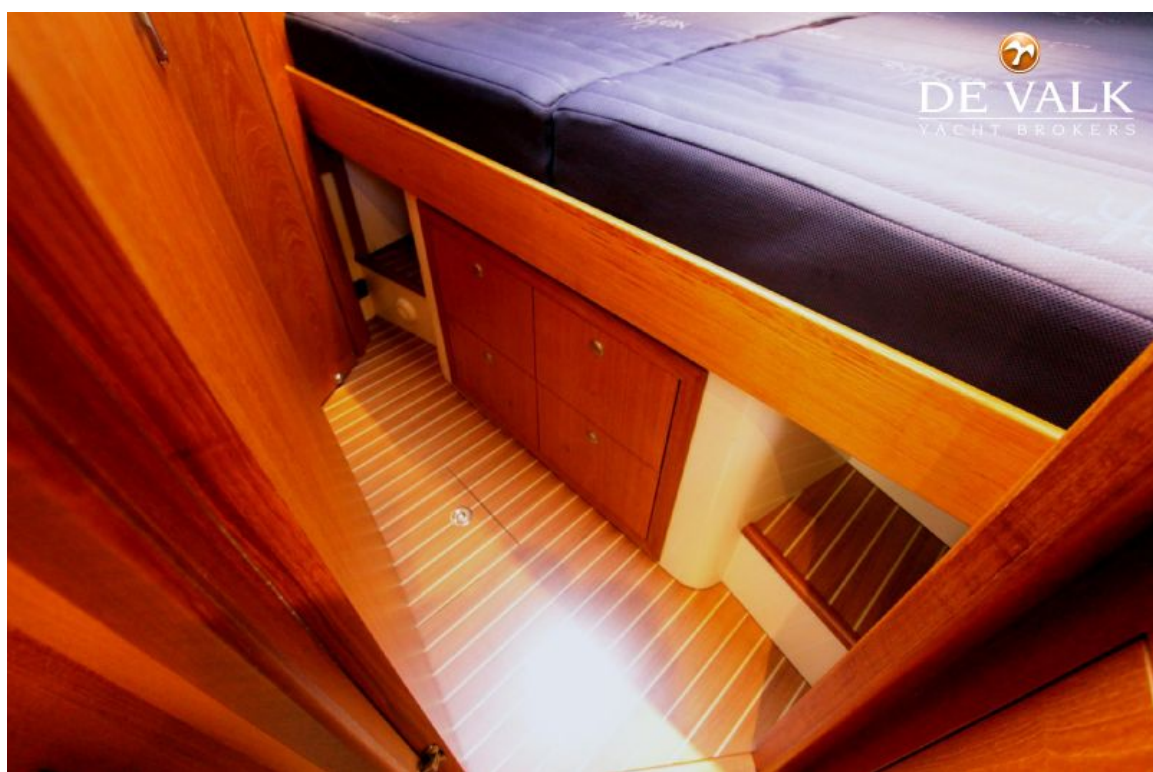
TUNA 40 SPORTIVO



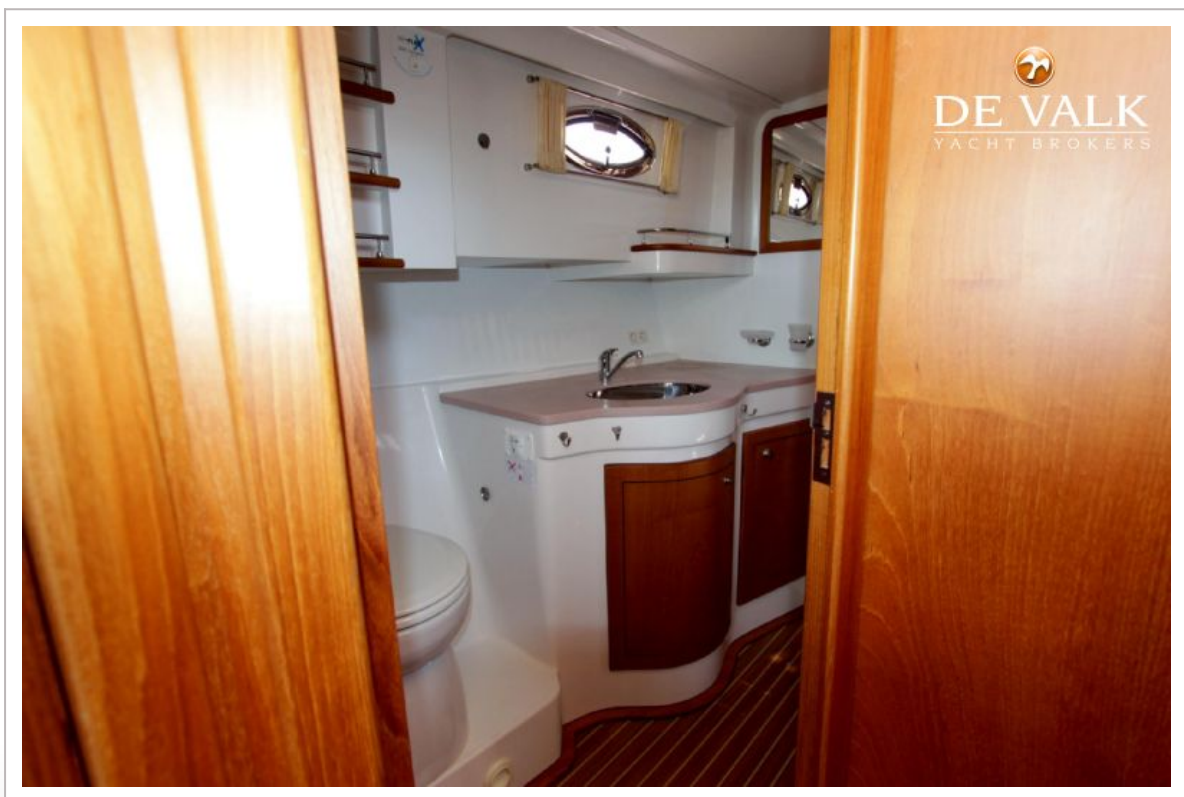
TUNA 40 SPORTIVO



TUNA 40 SPORTIVO



TUNA 40 SPORTIVO



TUNA 40 SPORTIVO

