



DE VALK  
YACHT BROKERS



EXCELLENT 1200 HYBRIDE



DE VALK  
YACHT BROKERS

# EXCELLENT 1200 HYBRIDE

## BROKER'S COMMENTS

Wonderful Excellent 1200 hybrid semi-displacement in perfect condition. Her 440pk strong Yanmar engine ensures that it reaches speeds up to 24 knots. The Excellent is equipped with a bow and stern thruster which makes her well manoeuvrable. Its hybrid engine allows to sail up to seven hours at a speed of 6 knots . With two cabins , two bathrooms, a full kitchen, washer and dryer is this Excellent 1200 hybrid a complete ship with everything a new owner could wish for.

*Reinier van der Wolf*

## SPECIFICATIONS

<b>Dimensions</b>	13.00 x 3.80 x 0.95 (m)	<b>Builder</b>	Excellent Yachts BV
<b>Built</b>	2007	<b>Cabins</b>	2
<b>Material</b>	GRP	<b>Berths</b>	4
<b>Engine(s)</b>	1 x Yanmar 6LY3A-STP diesel	<b>Hp/Kw</b>	440.00 (hp), 323.40 (kw)
<b>Asking price</b>	sold (VAT )	<b>Lying</b>	at sales office

## CONTACT

<b>Sales office</b>	De Valk Monnickendam B.V.	<b>Telephone</b>	+31 (0)299 65 63 50
<b>Address</b>	Hoogedijk 6 1145 PM Katwoude NL	<b>E-mail</b>	monnickendam@devalk.nl

## DISCLAIMER

These particulars are given in good faith as supplied but cannot be guaranteed.



# EXCELLENT 1200 HYBRIDE

## GENERAL

Model	EXCELLENT 1200 HYBRIDE
Type	motor yacht
LOA (m)	13,00
LWL (m)	11,00
Beam (m)	3,80
Draft (m)	0,95
Air draft (m)	2,60
Year built	2007
Builder	Excellent Yachts BV
Country	The Netherlands
Designer	Excellent Yachts / PI Modelling
Displacement (t)	11
CE norm	C
Hull material	GRP
Hull colour	blue Gratefietblauw YT 155
Hull thickness (mm)	12 mm & 26 mm
Hull shape	hard chine
Superstructure material	GRP RAL 9010
Rubbing strake	PVC
Deck material	GRP
Deck finish	non-skid moulded in
Antifouling (year)	Black Epifanes neosil 2018
Window frame	aluminium
Window material	double glazing Rigo
Portholes	aluminium Gebo
Mast can be lowered	yes
Fuel tank (litre)	700
Level indicator (fuel tank)	PC Navigo
Freshwater tank (litre)	500
Level indicator (freshwater)	PC Navigo



# EXCELLENT 1200 HYBRIDE

Blackwater tank (litre)	200
Level indicator (blackwater)	PC Navigo
Blackwater tank extraction	pump Jabsco 59090
Wheel steering	hydraulic Vetus
Inside helm position	yes
Extra info	Remotecontrol for gearbox, bow and sternthruster

## ACCOMMODATION

Cabins	2
Berths	4
Interior	mahogany
Floor	teak and holly
Open cockpit	yes
Saloon	yes
Sliding roof	electric Webasto (260x110)
Heating	Mar-ix IV5 climate control
Air-conditioning	Mar-ix IV5 climate control
Dinette	yes
Opening door to aft deck	folding
Countertop	yes
Sink	stainless steel
Cooker	calor gas Atag 4-burner HG7111MBA1E
Extractor	AEG 8675
Microwave	Severin
Microwave/oven combi	Etna
Fridge	150l Isoterm
Freezer	inside fridge 50l Isoterm
Hot water system	220V + engine 60 l
Water pressure system	electrical Shurflo 206
Dishwasher	AEG Favorit Y5250
Owners cabin	French bed



# EXCELLENT 1200 HYBRIDE

Wardrobe	hanging and shelves
Bathroom	en suite
Toilet	en suite
Toilet system	electric
Wash basin	in the bathroom
Shower	yes
Guest cabin 1	double bed
Bathroom	shared
Toilet	shared
Toilet system	electric
Wash basin	in the bathroom
Shower	shared
Washing machine	Candy Aqua 1000T 3,5 kg. AA
Dryer	Everglades C3011
Extra info	Seperated airco/heating in cabin, kitchen and saloon Marix C5 5kw
Extra info	Extra fridge in cockpit Isoterm CR200

## MACHINERY

No of engines	1
Make	Yanmar
Type	6LY3A-STP
HP	440,00
kW	323,40
Fuel	diesel
Year installed	2007
Maximum speed (kn)	21,5
Cruising speed (kn)	5,4-8,6
Consumption (l/hr)	7,0-10,0
Engine hours	1040
Engine cooling system	freshwater heat exchanger



# EXCELLENT 1200 HYBRIDE

Drive	V-drive
Engine controls	electrical TFX i 6300
Gearbox	hydraulic ZF 83 IV 2.5 1
Electric engine	1200 rpm 6:1
kW	7,5
Bowthruster	electric Vetus 160 Kgf 24V
Sternthruster	electric 2x Vetus 75 Kgf 24V
Exhaust	watercooled
Thrust bearing	yes
Propeller type	fixed
Propeller blades	RH-5bl 25 x 25
Propeller shaft material	stainless steel 45 mm
Shaft lubrication	water
Electric bilge pump	Johnson pump L650 Duo
Electrical installation	12/24/220V
Generator	Fisher Panda AFT-Pms 10.000 (48v 10kw)
Batteries	yes
Start battery	1 x VMF 160Ah (2016)
Service battery	Northstar NSB 170FT
Battery monitor	Mastervolt BPM
Battery charger	Victron Multiplus 48V/2500W/35A
Inverter	Victron Quattro 24V/5000W/120
Shorepower	with cable 16A
Trimtabs	Benett (105x30)
Extra info	Remotecontrol for gearbox, bow and sternthruster
Extra info	Motor service 2018
Extra info	Turbo renewed 2018

## NAVIGATION

Depth sounder	Yanmar I5601E
Log	Yanmar I5601E



# EXCELLENT 1200 HYBRIDE

VHF	Simrad RS87
Autopilot	Simrad AC 10 + Simnav AP26
Rudder angle indicator	Simrad AP26
Radar	Simrad DX45
GPS	Simrad CX44
Plotter	Simnav CX44

## EQUIPMENT

Cockpit cover	yes
Cockpit cushions	yes
Bathing platform	yes
Boarding ladder	stainless steel
Transom door	yes
Deck shower	Warm/Cold
Anchor	20 KG
Anchor chain	50 M
Windlass	electrical Ventus A1024D
Deck wash	yes
Sea railing	stainless steel
Wiper	3
Horn	yes
Fenders	yes
Mooring lines	yes
TV	1 Flatscreen + 1 LCD
TV receiver	Digitenne V9125
Radio-cd player	LG DVD home theater system
DVD player	Blue Ray
Speakers in salon	5
Fire extinguisher	Firepro 2 x 2kg
Extinguisher in engine room	Firepro





## EXCELLENT 1200 HYBRIDE





## EXCELLENT 1200 HYBRIDE



## EXCELLENT 1200 HYBRIDE





# EXCELLENT 1200 HYBRIDE



## EXCELLENT 1200 HYBRIDE





## EXCELLENT 1200 HYBRIDE



## EXCELLENT 1200 HYBRIDE





## EXCELLENT 1200 HYBRIDE

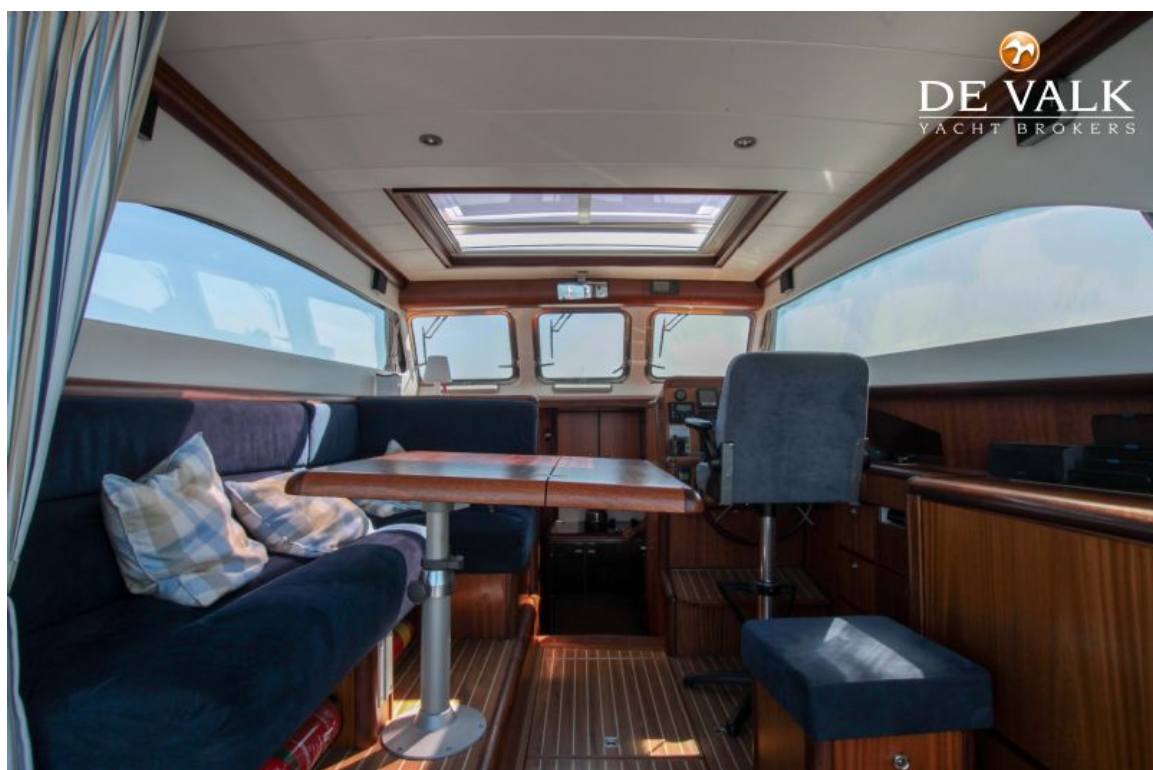


## EXCELLENT 1200 HYBRIDE

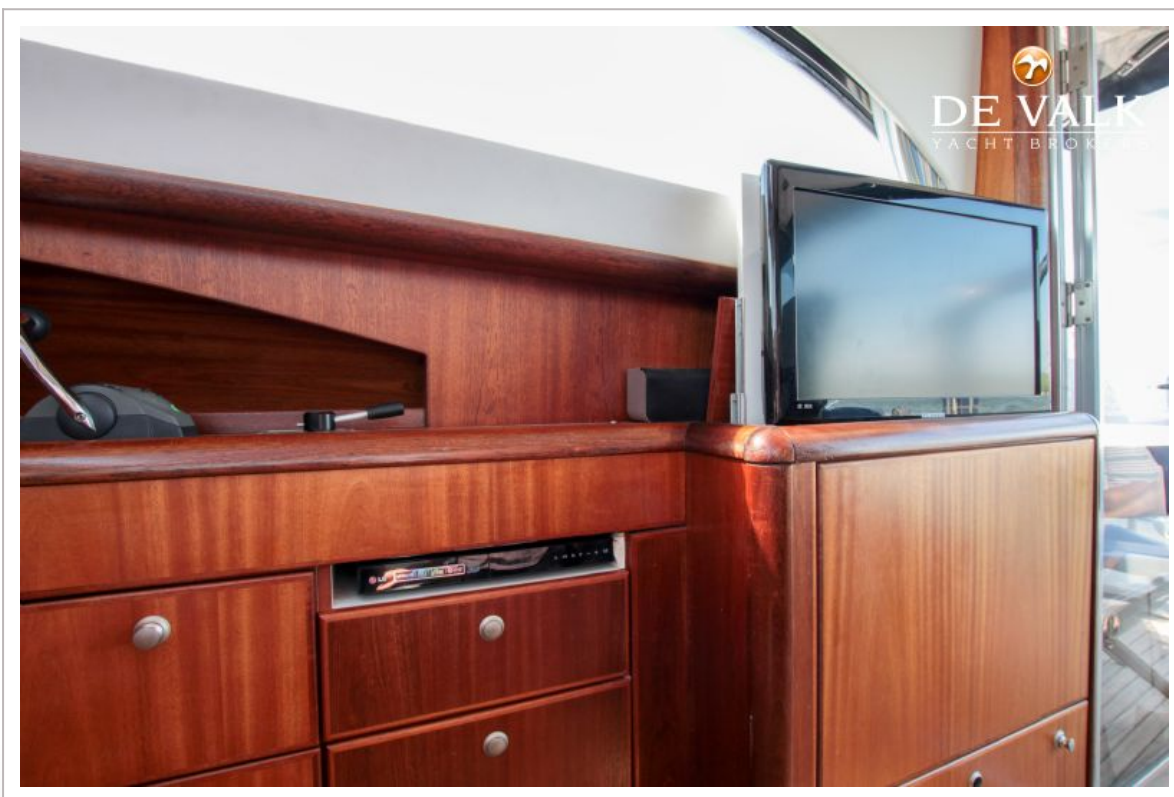
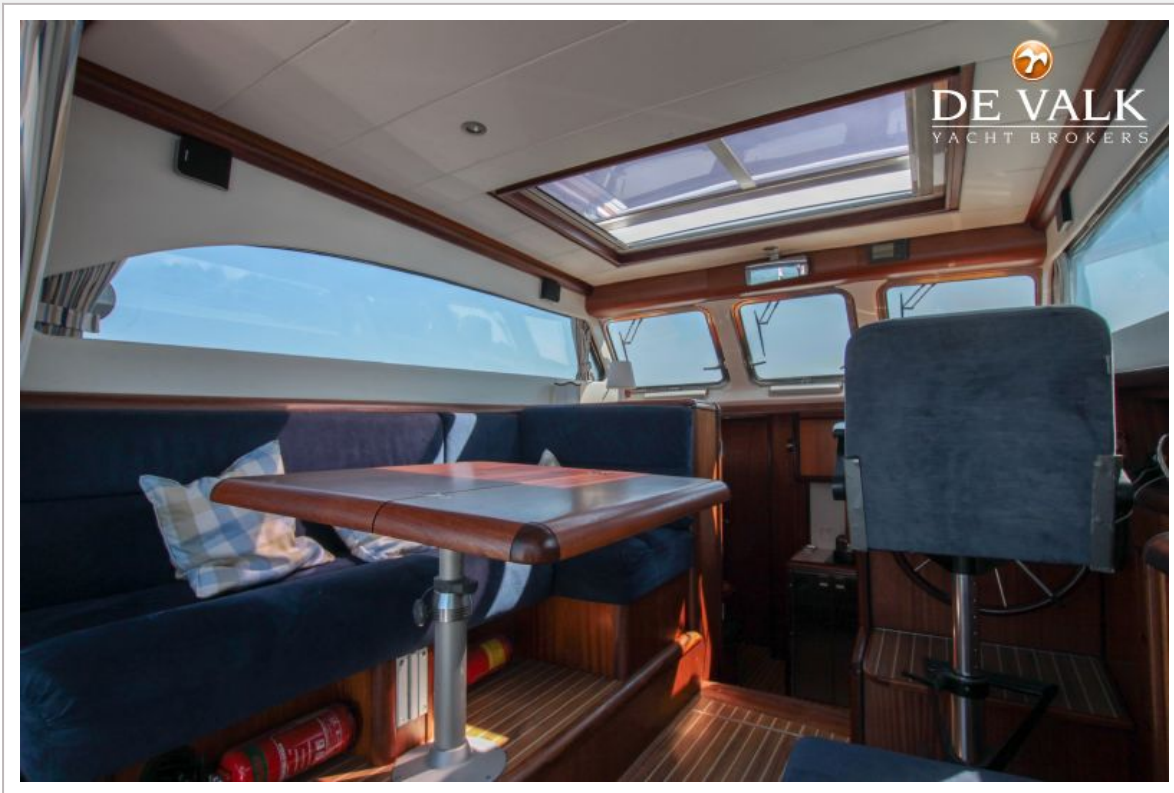




## EXCELLENT 1200 HYBRIDE

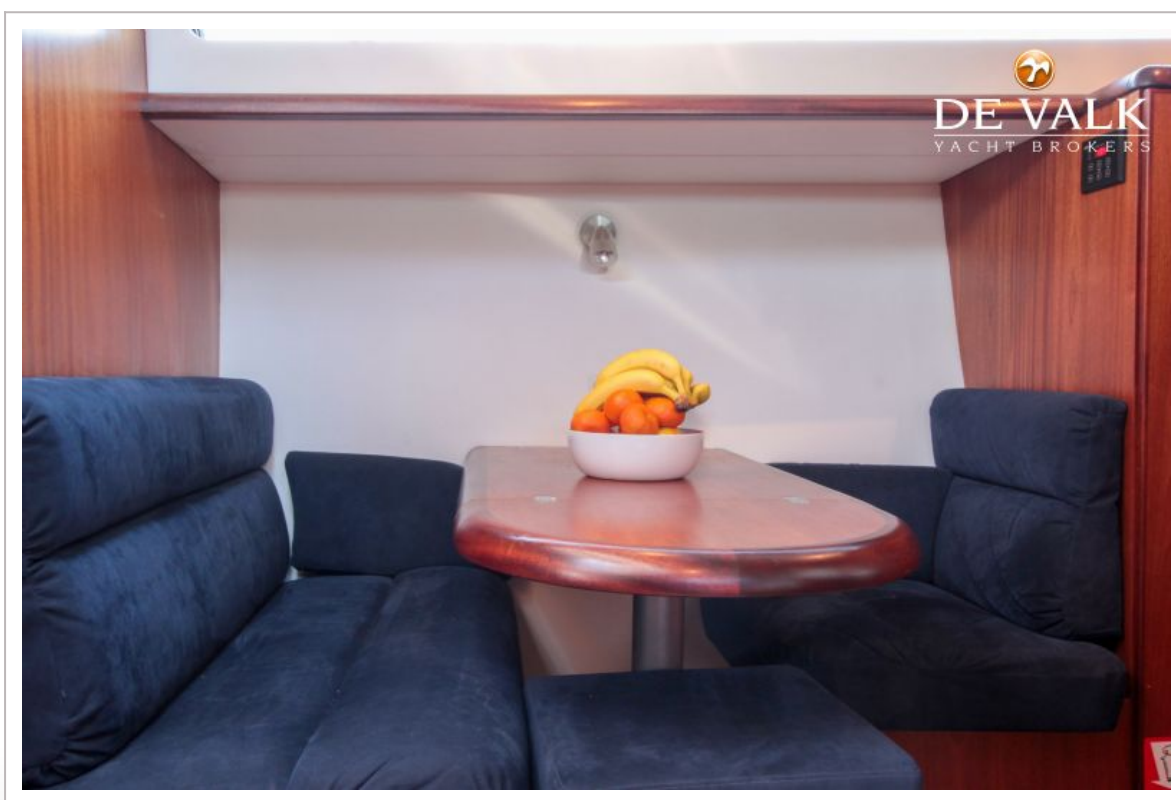


## EXCELLENT 1200 HYBRIDE

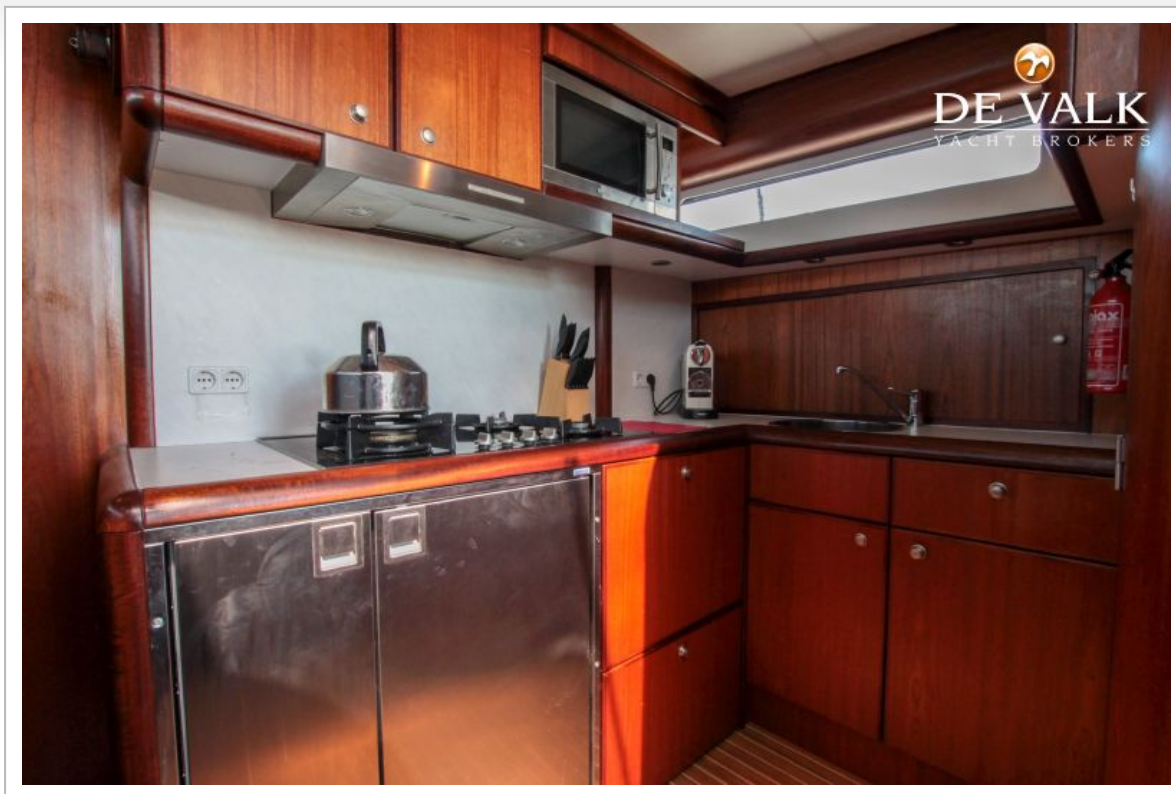




## EXCELLENT 1200 HYBRIDE

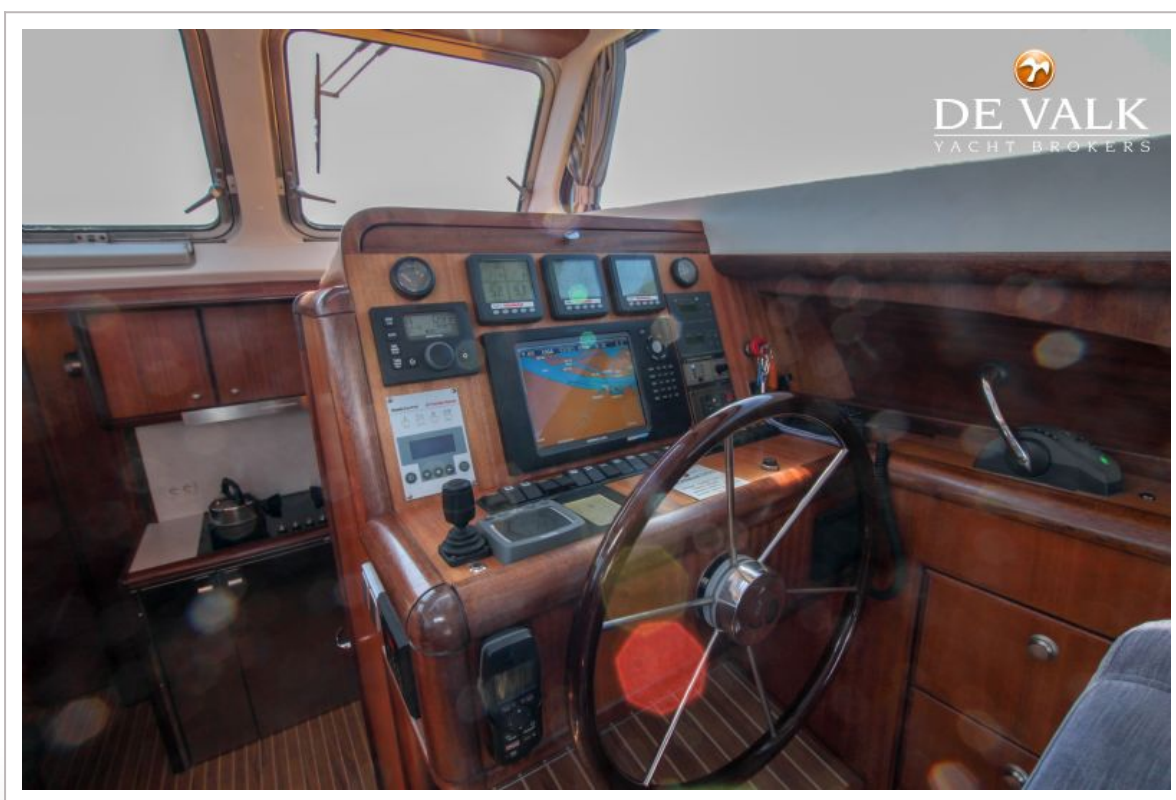
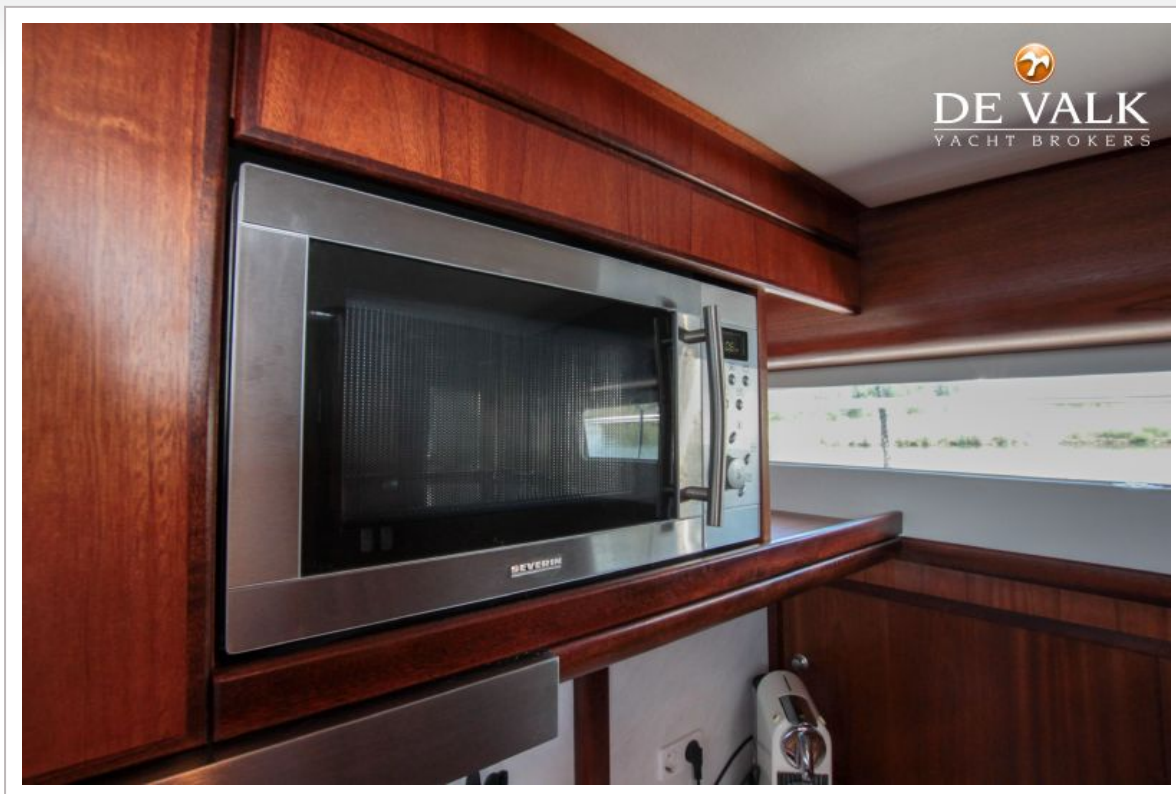


## EXCELLENT 1200 HYBRIDE





## EXCELLENT 1200 HYBRIDE

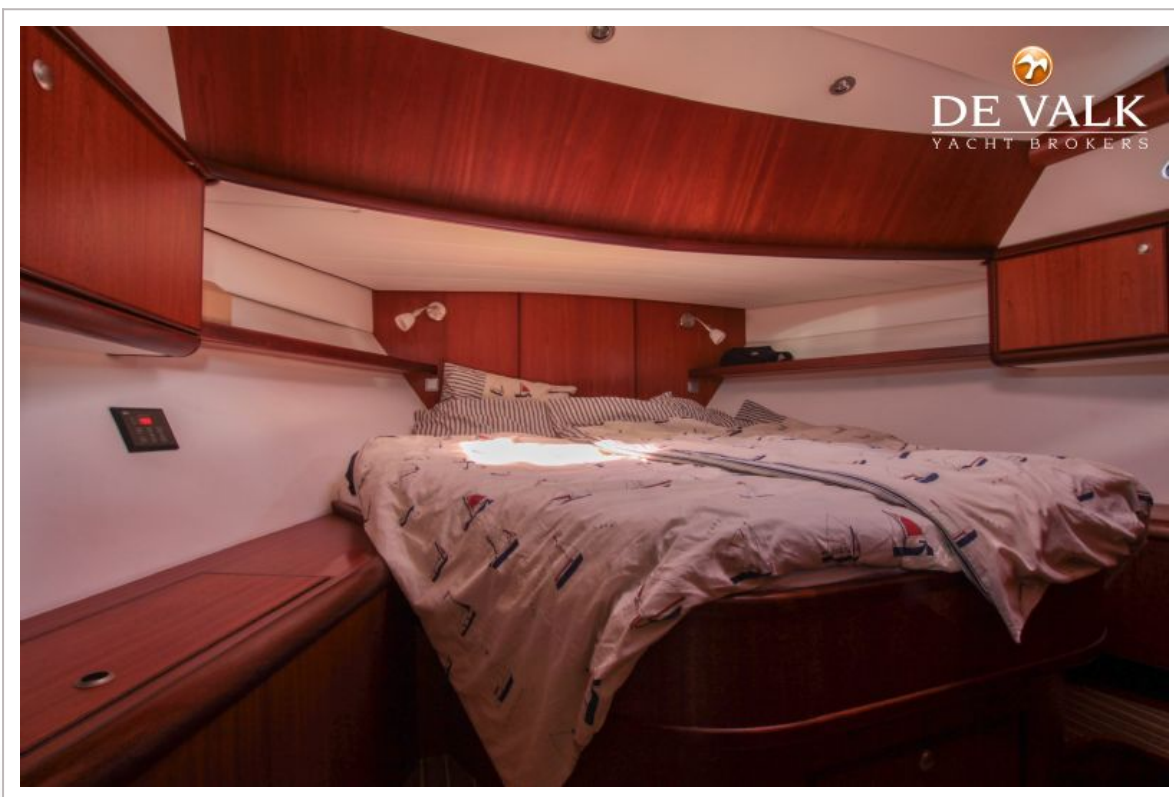
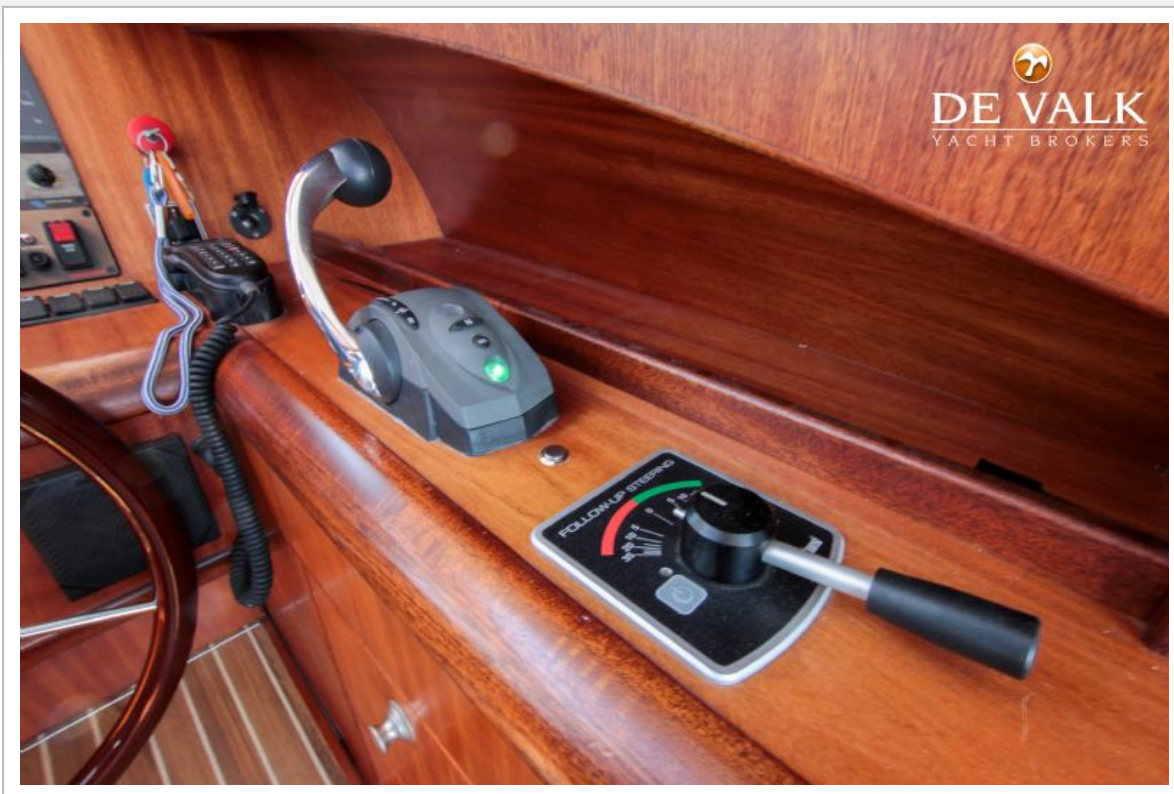


# EXCELLENT 1200 HYBRIDE

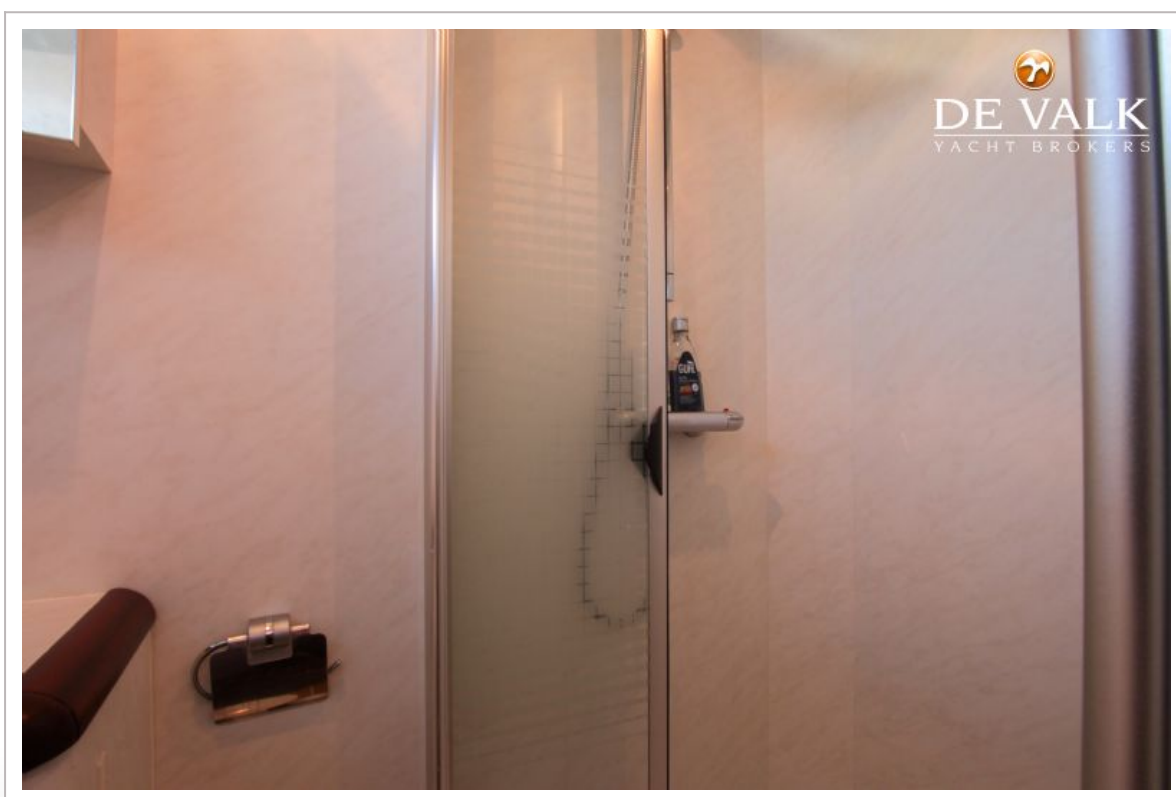
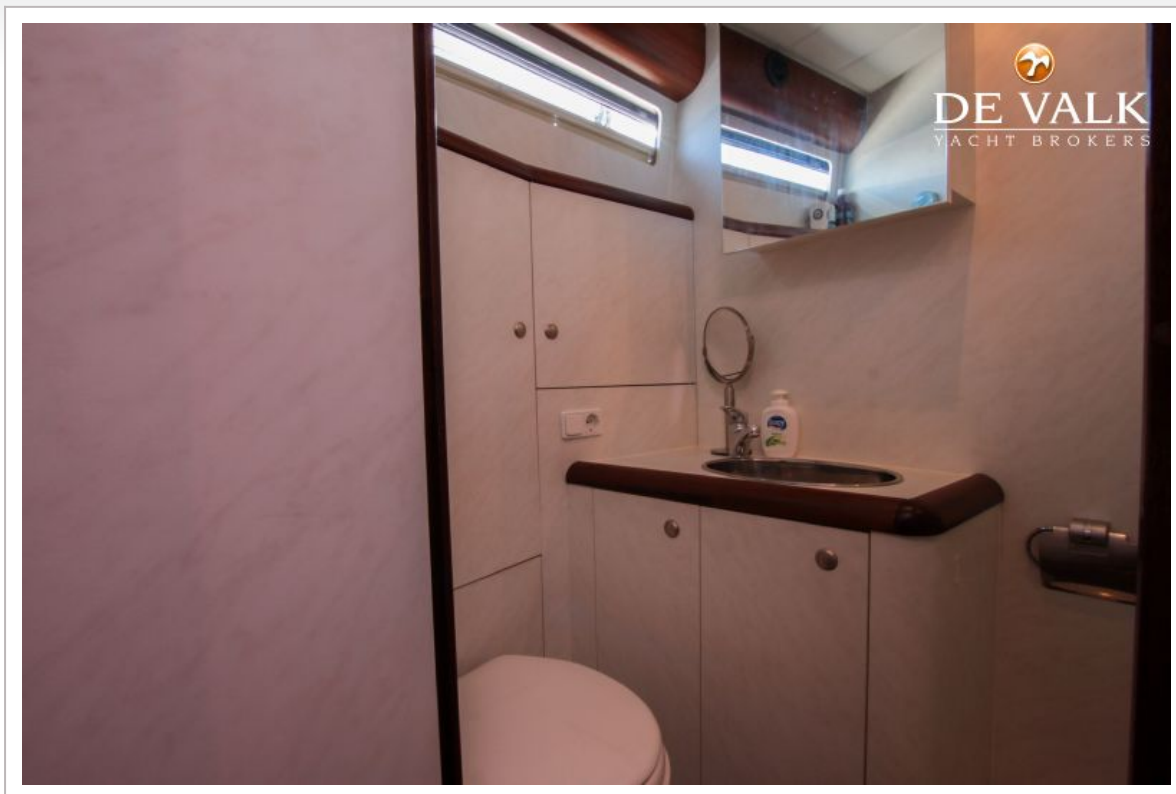




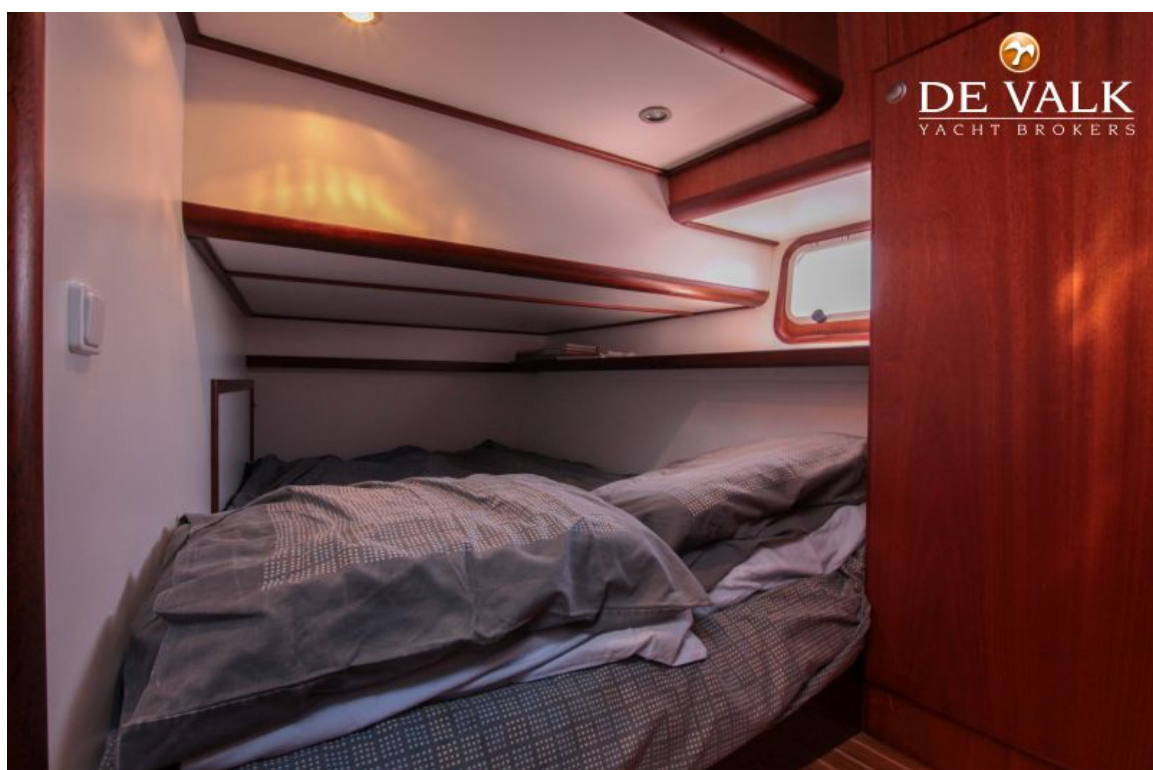
## EXCELLENT 1200 HYBRIDE



## EXCELLENT 1200 HYBRIDE



## EXCELLENT 1200 HYBRIDE





## EXCELLENT 1200 HYBRIDE

