



DE VALK
YACHT BROKERS



LUXE MOTOR 13.80



DE VALK
YACHT BROKERS

BROKERAGE | CHARTER | BERTHS | FINANCE | INSURANCE | YACHT MANAGEMENT

LUXE MOTOR 13.80

BROKER'S COMMENTS

The signature line of the Luxe Motor will receive many times a look of appreciation. This appreciation also applies to installations where frequent use is made of professional components. This is, in particular, in the engine room, as well as easy to see at the navigation equipment. The Luxe Motor 13.80 has a 127 hp Sisu diesel engine (similar to Scania), with a consumption of approx. 4 liters / hour. The interior is finished with maple wood. The Kabola central heating also has a hot water supply.

Peter van Diggele

SPECIFICATIONS

Dimensions	13.80 x 4.10 x 0.90 (m)	Builder	Scheepswerf Bocxe - Delft
Built	2007	Cabins	2
Material	Steel	Berths	5
Engine(s)	1 x Sisu T05046 diesel	Hp/Kw	127.00 (hp), 93.35 (kw)
Asking price	sold (VAT)	Lying	at sales office

CONTACT

Sales office	De Valk Loosdrecht B.V.	Telephone	+31 (0)35 582 90 30
Address	't Breukeleveense Meentje 6 1231LM Loosdrecht / Wijdmeren NL	E-mail	loosdrecht@devalk.nl

DISCLAIMER

These particulars are given in good faith as supplied but cannot be guaranteed.



LUXE MOTOR 13.80

GENERAL

Model	LUXE MOTOR 13.80
Type	motor yacht
LOA (m)	13,80
Beam (m)	4,10
Draft (m)	0,90
Air draft (m)	3,05
Headroom (m)	2,00
Year built	2007
Launched	2008
Builder	Scheepswerf Bocxe - Delft
Country	The Netherlands
Designer	Euroship
Displacement (t)	30
Hull material	steel
Hull colour	black
Hull thickness (mm)	6
Hull shape	hard chine
Superstructure material	steel
Superstructure (mm)	6
Deck plate thickness (mm)	6
Rubbing strake	steel
Deck material	steel
Deck finish	non-skid paint
Superstructure deck finish	paint
Cockpit deck finish	synthetic teak
Antifouling (year)	Shiptech
Window frame	aluminium
Window material	tempered glass
Portholes	copper
Insulation	rockwool



Mast can be lowered	electric
Fuel tank (litre)	steel 2000
Level indicator (fuel tank)	yes
Freshwater tank (litre)	steel 1000
Level indicator (freshwater)	yes
Blackwater tank (litre)	polyethylene 200
Level indicator (blackwater)	yes
Greywater tank (litre)	polyethylene
Level indicator (greywater)	yes
Wheel steering	hydraulic
Outside helm position	yes
More info on hull	Shipcoat 2 comp.
More info on paintwork	De IJsel 2 comp.

ACCOMMODATION

Cabins	2
Berths	5
Interior	Ahorn
Floor	parquet
Aft deck	yes
Pilot house	yes
Saloon	yes
Headroom saloon (m)	1,9
Heating	central heating Kabola HR400 Combi
Heating 2	diesel ducted hot air Webasto
Galley	yes
Countertop	
Sink	stainless steel
Cooker	calor gas Smev 3
Oven	Watshome Kompakt
Extractor	yes



LUXE MOTOR 13.80

Gas alarm	Waeco
Fridge	Waeco with freezecompartiment
Hot water system	on central heating Kabola Combi
Water pressure system	electrical
Coffee maker	yes
Owners cabin	French bed
Bed length (m)	2
Wardrobe	hanging and shelves
Bathroom	en suite
Toilet	separate
Toilet system	electric
Wash basin	at the toilet
Shower	en suite
Guest cabin 1	double bed + single bed
Bed length (m)	1,9

MACHINERY

No of engines	1
Make	Sisu
Type	T05046
HP	127,00
kW	93,35
Fuel	diesel
Year installed	2007
Cruising speed (kn)	8
Consumption (l/hr)	4
Engine hours	685 (11-7-2016)
Engine cooling system	closed keelcooling
Drive	shaft
Engine controls	bowden cable
Gearbox	hydraulic



LUXE MOTOR 13.80

Bowthruster	hydraulic Kalkman 15 Hp
Exhaust	dry
Propeller type	fixed
Propeller blades	3
Propeller shaft material	steel
Shaft lubrication	grease
Electric bilge pump	yes
Bilge alarm	2x
Electrical installation	24-220V
Generator	dry exhaust Lamborghini
Running hours generator	61 (24-05-2016)
Generator 2	dry exhaust Honda 12-220V
Running hours generator 2	4
Batteries	yes
Start battery	24V420Ah
Service battery	24V420Ah
Generator battery	12V102Ah
Battery monitor	Vitron
Battery charger/inverter	Vitron Phoenix Multiplus 24V3000VA70Amp
Shorepower	with cable
Insulation transformer	yes
Auto positioning system	yes

NAVIGATION

Depth sounder	Stingray
Windset	Aduance
VHF	Sailer RT2048
VHF handheld	Cobra Marine
Autopilot	Ruisen + Griffioen
Rudder angle indicator	Radio Holland
Radar/GPS	Raymarine C120



Radar/GPS/plotter	Perisol Raymarine
PC connection	Etra turbo Wifi
Electronis chart(s)	Perisol
AIS receiver	AIS L3
AIS transponder	yes
Radio receiver	yes
Transmitter	yes
Camera	Rear
Searchlight	yes

EQUIPMENT

Fixed windscreen	yes
Sun awning	yes
Boarding ladder	yes
Gangway	yes
Anchor	Pool 50 KG
Anchor chain	40 M
Anchor 2	Pool 15KG
Windlass	hydraulic
Deck wash	yes
Dinghy	inflatable Lodestar RSA 26 (2,60 x 1,50 m)(2007)
Outboard	Tohatsu 8,8 Hp 2stroke
Davits	stainless steel
Davits controls	manual
Grab rail (superstructure)	stainless steel
Lifejackets	6
Wiper	3X
Horn	electric
Fenders	9
Mooring lines	6x 24mm-15m 2x 12mm-15m
Alarm system	Elro HA68S



TV	Philips Flatscreen
TV receiver	Digitenne
Radio-cd player	Pioneer
iPod connection	Radio
Surround Sound System	yes
Speakers in salon	yes
Speakers in cabin	Bose
Clock - barometer	yes
Fire extinguisher	5x
Latest extinguisher survey	2015
Extinguisher in engine room	yes
Extra info	Finse Valmet motor
Extra info	Shipcoat 10 jaar garantie (2007)
Extra info	Extra kluisje bij brugwachter point safa





LUXE MOTOR 13.80



LUXE MOTOR 13.80



LUXE MOTOR 13.80



LUXE MOTOR 13.80





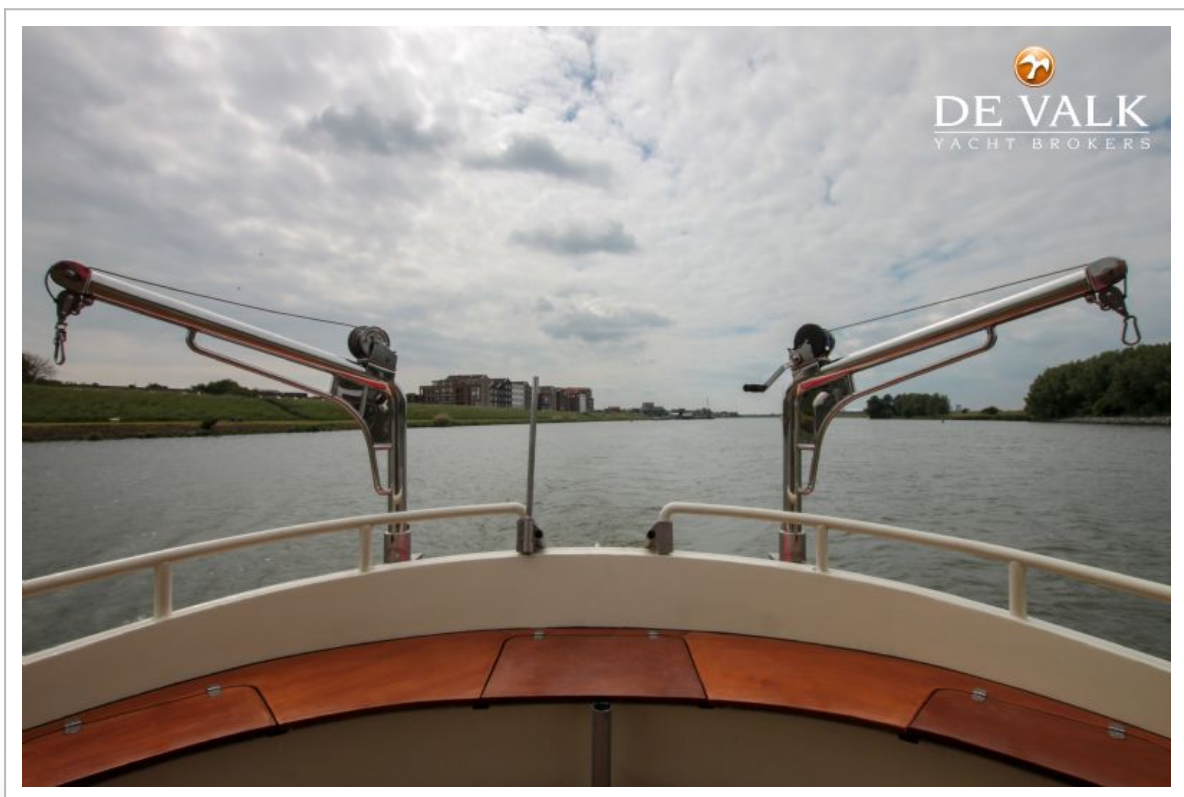
LUXE MOTOR 13.80

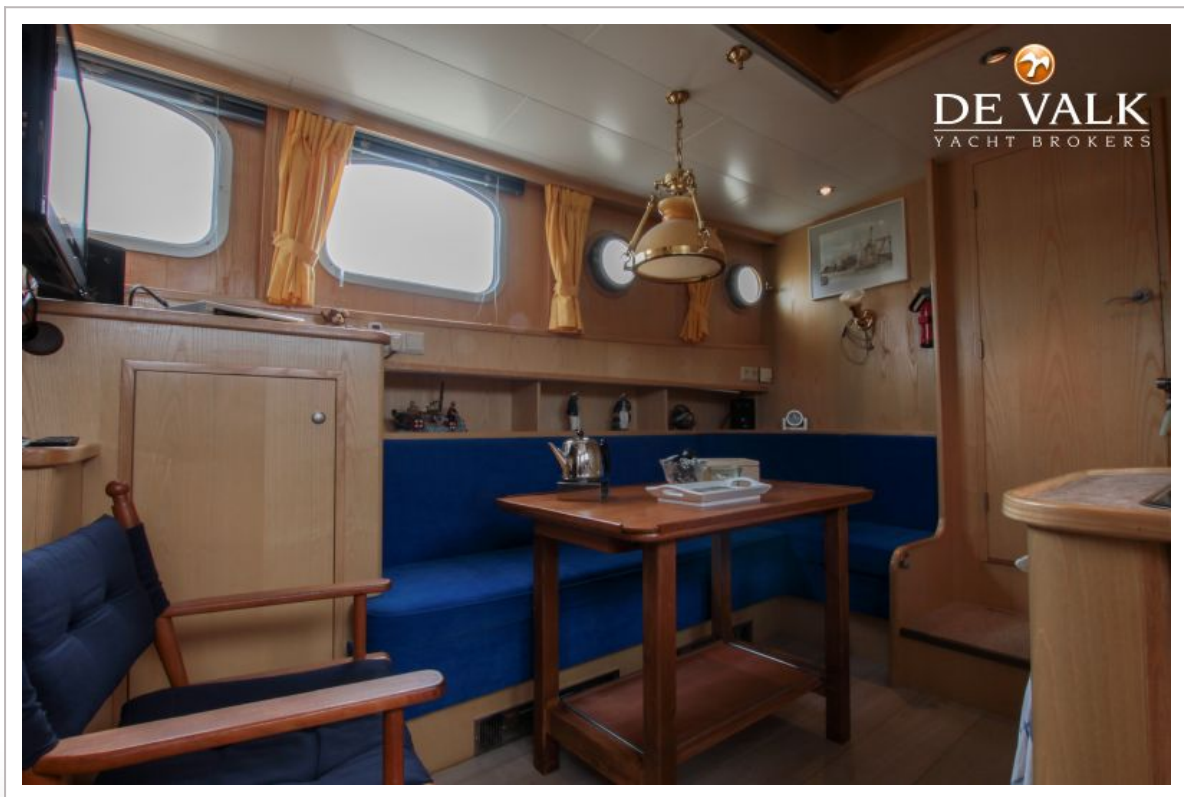
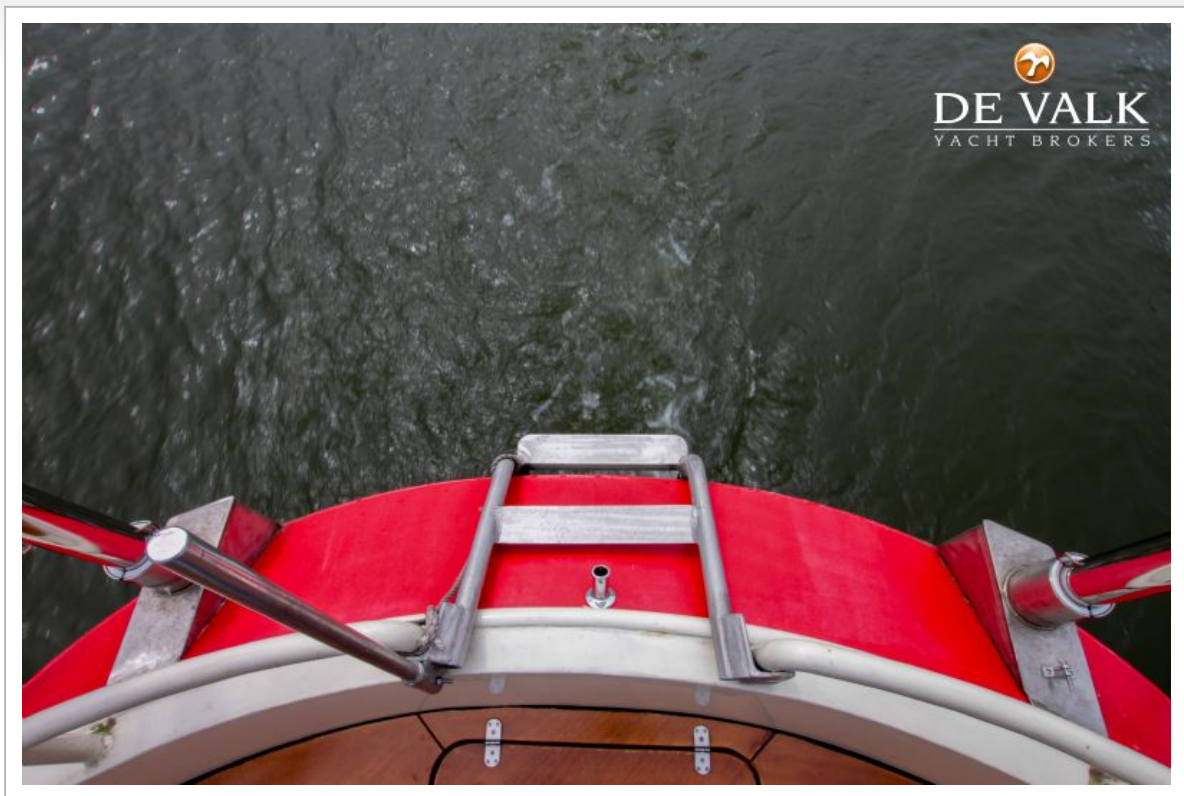


LUXE MOTOR 13.80

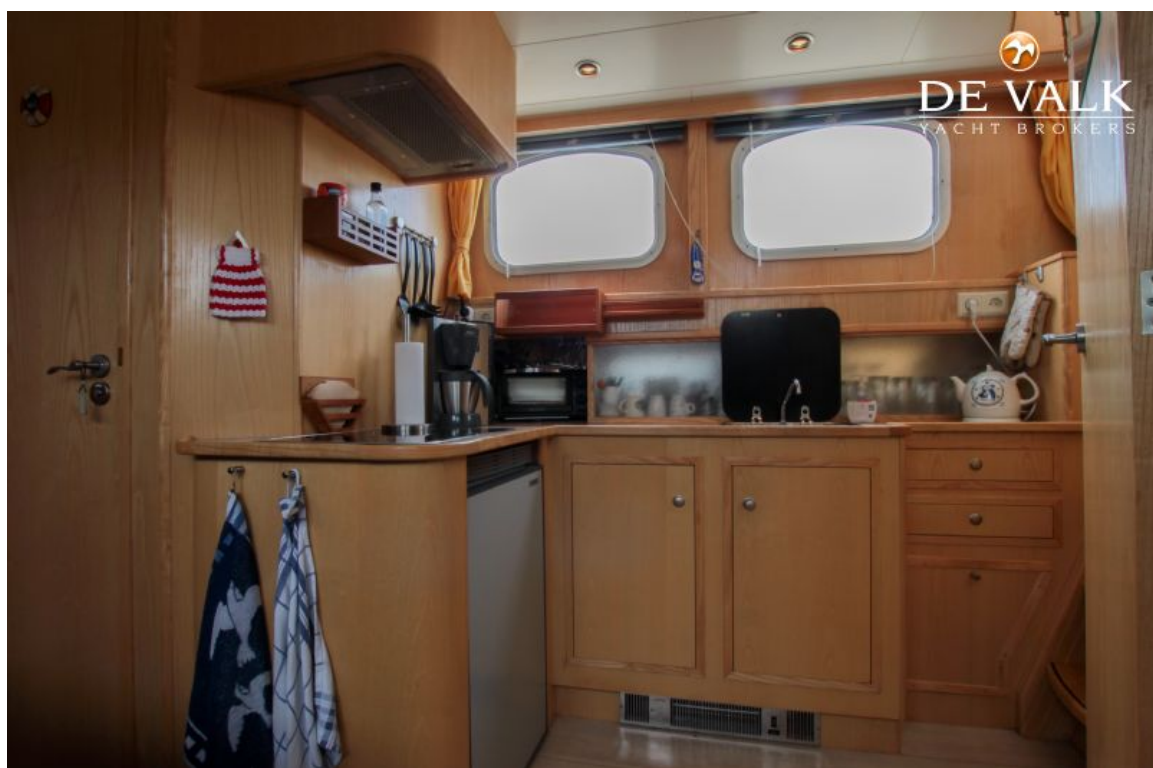


LUXE MOTOR 13.80

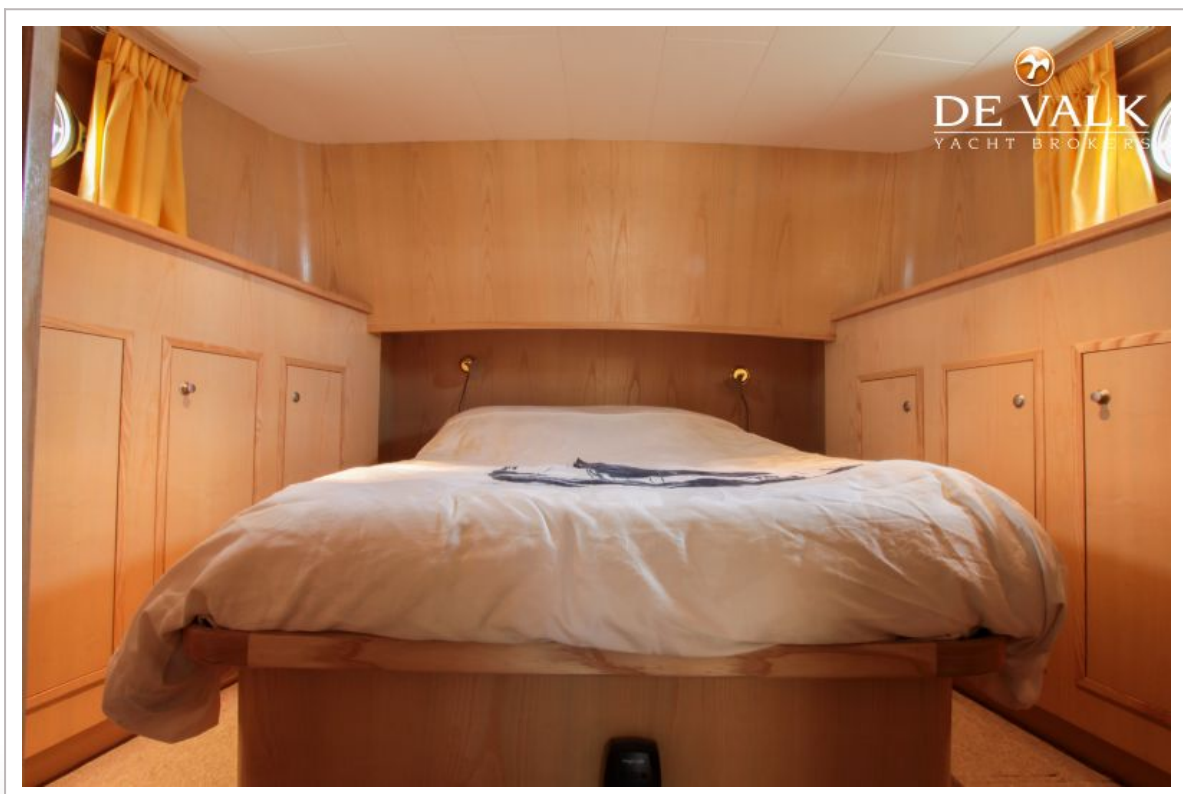
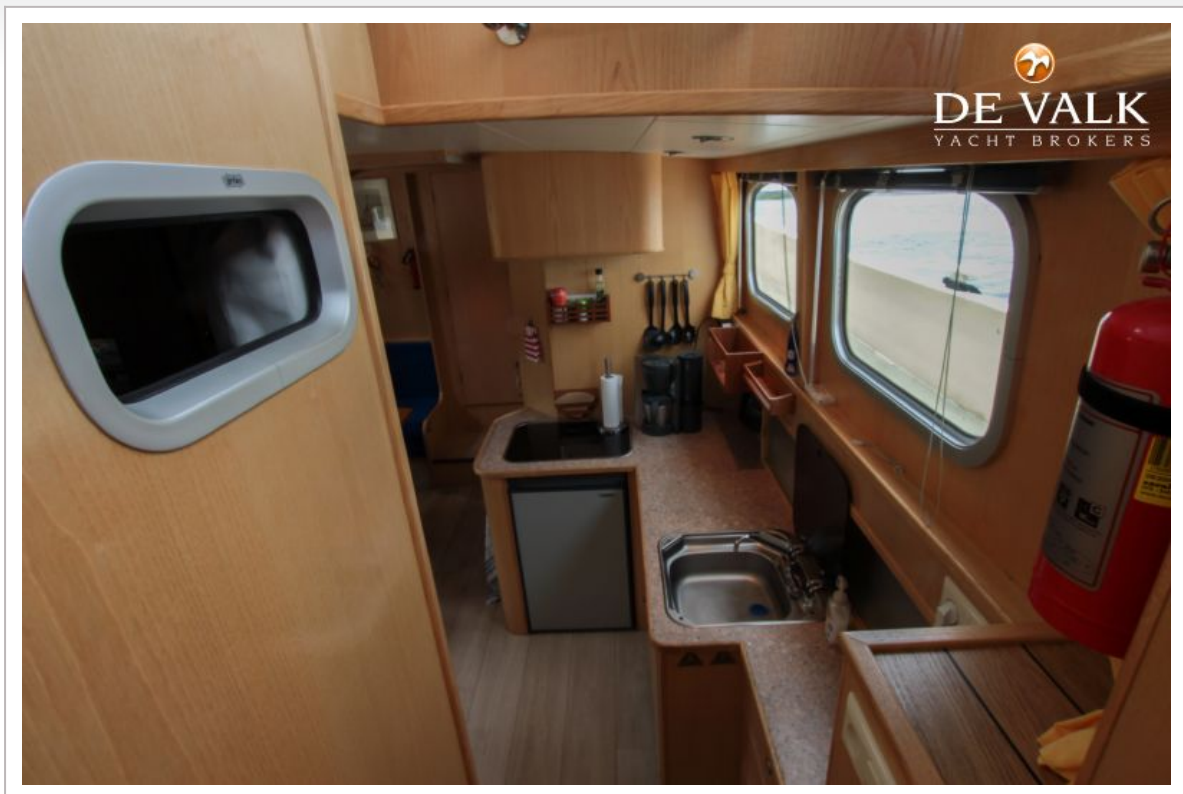




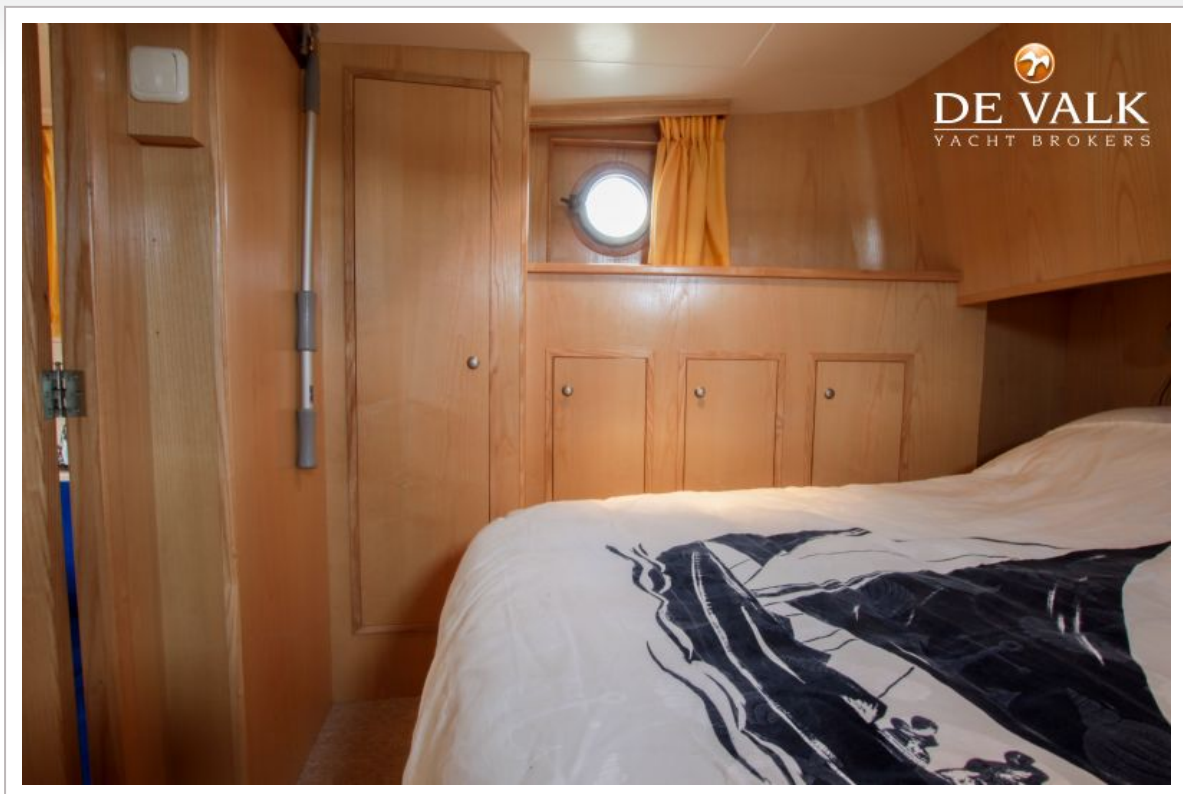
LUXE MOTOR 13.80



LUXE MOTOR 13.80



LUXE MOTOR 13.80



LUXE MOTOR 13.80



LUXE MOTOR 13.80



LUXE MOTOR 13.80



LUXE MOTOR 13.80



