



PILOT 50 TOPCOCKPIT

PILOT 50 TOPCOCKPIT

BROKER'S COMMENTS

The Pilot 50 Topcockpit "Poolbeer", designed by Willem Nieland is a comfortable, fast and safe seagoing motor yacht. Simply stunning in all aspects! She has a spacious saloon, three cabins and 6 berths, accommodation for owners and guests perfectly separated. Equipped for extensive cruising. With her design category A she will bring you home safe under all conditions. Easy to handle by her two engines and bow thruster. She is perfectly maintained and fully painted in 2017.

Marc Weijenberg

SPECIFICATIONS

| | | | |
|---------------------|-----------------------------|----------------|---------------------------------|
| Dimensions | 15.25 x 4.85 x 1.30 (m) | Builder | Ship Install Mekon |
| Built | 2004 | Cabins | 3 |
| Material | Aluminium | Berths | 6 |
| Engine(s) | 2 x Yanmar 6LY2M-STP diesel | Hp/Kw | 2 x 440.00 (hp), 323.40 (kw) |
| Asking price | sold (VAT) | Lying | elsewhere / Not at sales office |

CONTACT

| | | | |
|---------------------|--|------------------|------------------------|
| Sales office | De Valk Sint Annaland B.V. | Telephone | +31 (0)166 601 000 |
| Address | Koelhuisweg 4 4697 RM Sint Annaland NL | E-mail | sintannaland@devalk.nl |

DISCLAIMER

These particulars are given in good faith as supplied but cannot be guaranteed.



GENERAL

| | |
|---------------------------|---------------------|
| Model | PILOT 50 TOPCOCKPIT |
| Type | motor yacht |
| LOA (m) | 15,25 |
| LWL (m) | 14,95 |
| Beam (m) | 4,85 |
| Draft (m) | 1,30 |
| Air draft (m) | 3,30 |
| Air draft min (m) | 4,76 |
| Headroom (m) | 2,05 |
| Year built | 2004 |
| Launched | 2005 |
| Builder | Ship Install Mekon |
| Country | The Netherlands |
| Designer | W.Nieland |
| Displacement (t) | 21 |
| CE norm | A |
| Hull material | aluminium |
| Hull colour | blue Ice Blue |
| Hull shape | hard chine |
| Keel type | long keel |
| Superstructure material | aluminium |
| Deck plate thickness (mm) | 5 |
| Rubbing strake | rubber |
| Deck material | aluminium |
| Deck finish | non-skid paint |
| Cockpit deck finish | teak |
| Antifouling (year) | 2019 |
| Dorades | 5 |
| Window frame | aluminium |
| Window material | double glazing Hora |



| | |
|------------------------------|--|
| Deckhatch | yes |
| Portholes | aluminium |
| Insulation | foam Fire resistant |
| Radar arch | collapsible |
| Fuel tank (litre) | aluminium 3750 |
| Level indicator (fuel tank) | VDO |
| Freshwater tank (litre) | aluminium 2 x 500 |
| Level indicator (freshwater) | VDO |
| Blackwater tank (litre) | aluminium 2 x 250 |
| Level indicator (blackwater) | VDO |
| Blackwater tank extraction | deck extraction + uw line |
| Wheel steering | hydraulic |
| Inside helm position | yes |
| Outside helm position | hydraulic |
| More info on paintwork | Fully painted in 2017 by Kik-Bruinisse |
| Extra info | Headway mast up: 4,76 Headway mast down; 3,75 Headway mast-steerringwheel-Tracvision ball down; 3,30 |
| Extra info | Headway can be reduced enough to cruise the French Canals. |
| Extra info | Fuel tanks cleaned (2019) |

ACCOMMODATION

| | |
|-------------------------|-------------------------------|
| Cabins | 3 |
| Berths | 6 |
| Interior | teak Varnished (2014) |
| Floor | teak |
| Aft deck | yes |
| Pilot house/deck saloon | yes |
| Saloon | with L-shaped settee |
| Headroom saloon (m) | 2,00 |
| Heating | central heating 2018/2019 new |
| Air-conditioning | single cycle airco Webasto |



PILOT 50 TOPCOCKPIT

| | |
|--------------------------|---------------------------------------|
| Chart table | yes |
| Aft Cabin | yes |
| Dinette | opposite of galley |
| Opening door to aft deck | yes |
| Galley | yes |
| Countertop | corian |
| Sink | stainless steel |
| Cooker | electric Siemens 4 burner |
| Extractor | yes |
| Microwave/oven combi | Siemens Microwelle Plus |
| Fridge | Siemens |
| Freezer | Pentan |
| Hot water system | 220V or central heating New 2018/2019 |
| Water pressure system | electrical |
| Owners cabin | double bed |
| Bed length (m) | 2,00 |
| Wardrobe | hanging and shelves |
| Bathroom | en suite I |
| Toilet | en suite New 2019 |
| Toilet system | electric Cerit |
| Wash basin | in the bathroom |
| Shower | en suite |
| Guest cabin 1 | double bed |
| Bed length (m) | 2,00 |
| Wardrobe | hanging and shelves |
| Bathroom | shared II |
| Toilet | shared |
| Toilet system | electric Cerit |
| Wash basin | in the bathroom |
| Shower | shared |
| Guest cabin 2 | double bed |
| Bed length (m) | 2,00 |



| | |
|-----------------------------|---------------------|
| Wardrobe | hanging and shelves |
| Washing machine/dryer combi | Bosch WVF 2402 |

MACHINERY

| | |
|--------------------------|---|
| No of engines | 2 |
| Make | Yanmar |
| Type | 6LY2M-STP |
| HP | 440 |
| kW | 323,40 |
| Fuel | diesel |
| Year installed | 2004 |
| Maximum speed (kn) | 22 |
| Cruising speed (kn) | 11 |
| Consumption (l/hr) | 12 ltr/hr @ 7 knots |
| Engine hours | 2650 |
| Engine cooling system | freshwater heat exchanger |
| Drive | shaft |
| Engine controls | electrical Morse |
| Gearbox | hydraulic |
| Bowthruster | electric Vetus 95kgf/5.3kw (2013) |
| Sternthruster | electric 2018/2019 new |
| Exhaust | watercooled |
| Propeller type | fixed 2x27"x21" |
| Propeller blades | With rope cutter |
| Propeller shaft material | stainless steel |
| Shaft lubrication | water |
| Electric bilge pump | 3 x |
| Electrical installation | 12/24/220v |
| Generator | silent separator Wisper power 8000 Mastervolt |
| Running hours generator | 77 |
| Start battery | 4 x Optima 50ah (2015) |



| | |
|------------------------|--------------------------------------|
| Service battery | 8x Mastervolt gel 200AH (2015) |
| Battery monitor | Mastervolt Powersystem Control panel |
| Battery charger | Mastervolt Mass 24/75 |
| Inverter | Mastervolt Mass Sine 24/2500 |
| Shorepower | with cable |
| Insulation transformer | 3.5 Mastervolt |
| Trimtabs | Bennett |
| Extra info | fuel polishing/cleaning system |
| Extra info | new injectors main engines (2019) |
| Extra info | full engine service 2018/2019 |

NAVIGATION

| | |
|------------------------|-------------------------------------|
| Compass | yes |
| Electric compass | Raymarine ST60 |
| Depth sounder/log | Raymarine Tridata ST60 |
| Repeater | Raymarine ST60 |
| VHF | Raymarine 55E (2019) |
| Autopilot | Raymarine Smartpilot 6001 |
| Rudder angle indicator | via autopilot |
| Radar/GPS/plotter | (new 2019) Raymarine Hybrid Touch |
| Navtex | Mcmurdo ICS NAV6 |
| Electronic chart(s) | EU West Europe, Schotland, Iris Sea |
| AIS receiver | (2019) |
| AIS transponder | (2019) |
| Camera | 2 x Cougar C.TFT7IR |
| Navigation lights | yes |
| Searchlight | yes |

EQUIPMENT

| | |
|------------------|--------|
| Bimini | (2019) |
| Cockpit cushions | yes |



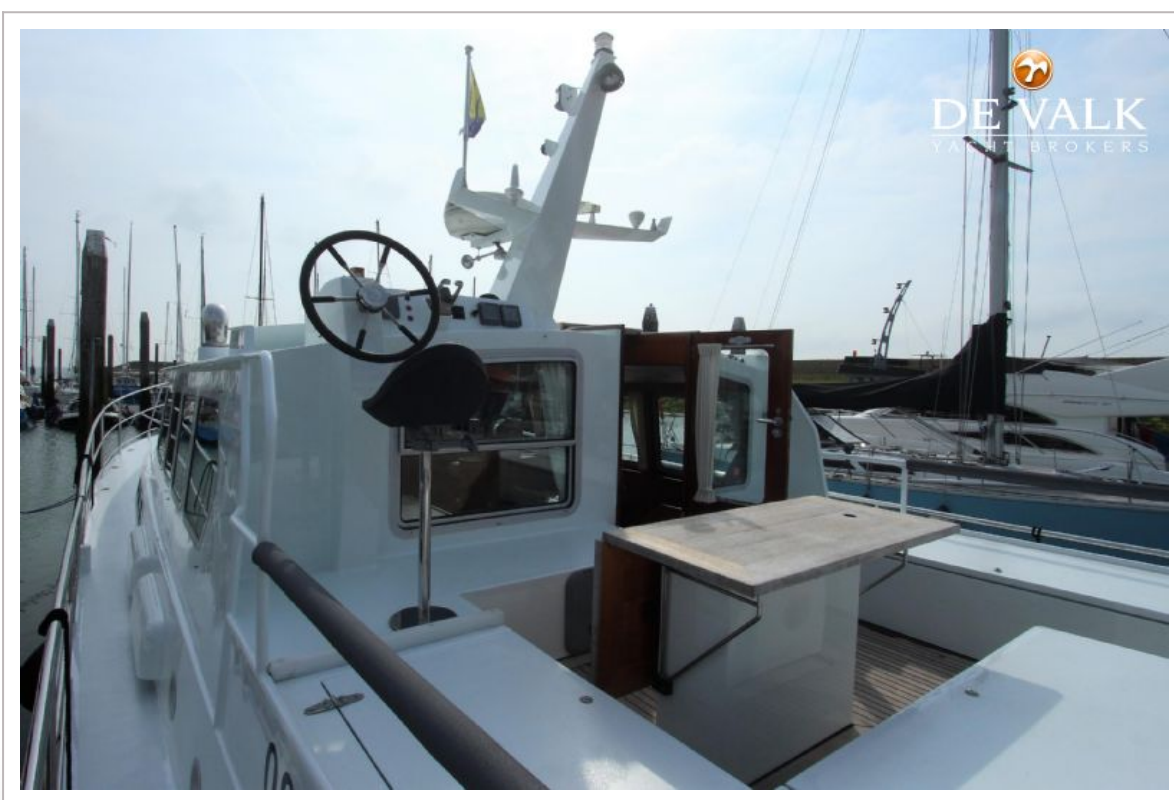
| | |
|-----------------------------|---|
| Cockpit table | yes |
| Bathing platform | yes |
| Boarding ladder | stainless steel |
| Anchor | Delta Kobra |
| Anchor chain | 40 mtr |
| Windlass | electrical Vetus |
| Deck wash | yes |
| Sea railing | stainless steel |
| Grab rail (superstructure) | aluminium |
| Railing side opening gates | yes |
| Pushpit | yes |
| Pulpit | yes |
| Life raft | container Plastimo Offshore (2004) |
| Life raft (pers) | Plastimo offshore 6 p. needs new survey |
| Wiper | with wash 3 x |
| Horn | electric |
| Fenders | yes |
| Mooring lines | yes |
| TV | Samsung & Sharp |
| TV receiver | Chrome-Cast (2019) |
| Radio-cd player | salon, master bedroom and guestroom. |
| Cockpit speakers | yes |
| Speakers in salon | yes |
| Speakers in cabin | yes |
| Clock - barometer | yes |
| Fire extinguisher | yes |
| Latest extinguisher survey | 2019 |
| Extinguisher in engine room | yes |
| Auto extinguisher system | yes |



PILOT 50 TOPCOCKPIT



PILOT 50 TOPCOCKPIT



PILOT 50 TOPCOCKPIT



PILOT 50 TOPCOCKPIT



PILOT 50 TOPCOCKPIT



PILOT 50 TOPCOCKPIT



PILOT 50 TOPCOCKPIT



PILOT 50 TOPCOCKPIT



PILOT 50 TOPCOCKPIT



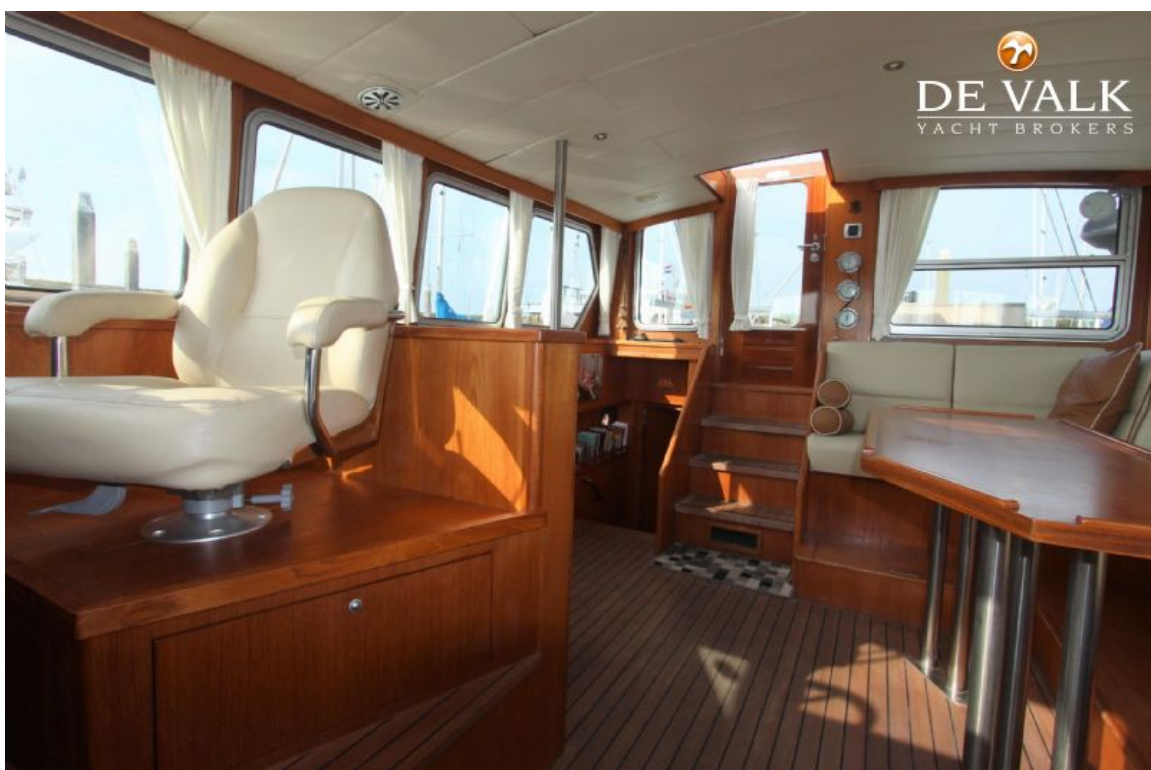
PILOT 50 TOPCOCKPIT



PILOT 50 TOPCOCKPIT



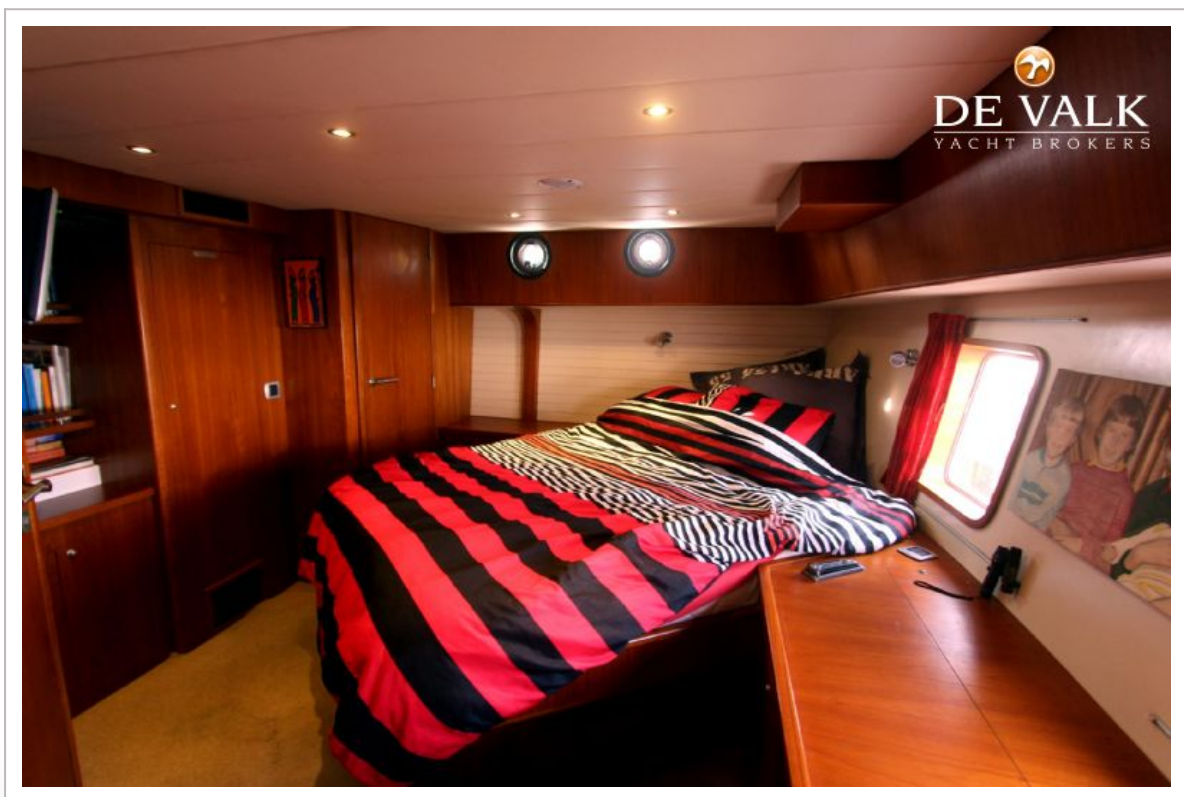
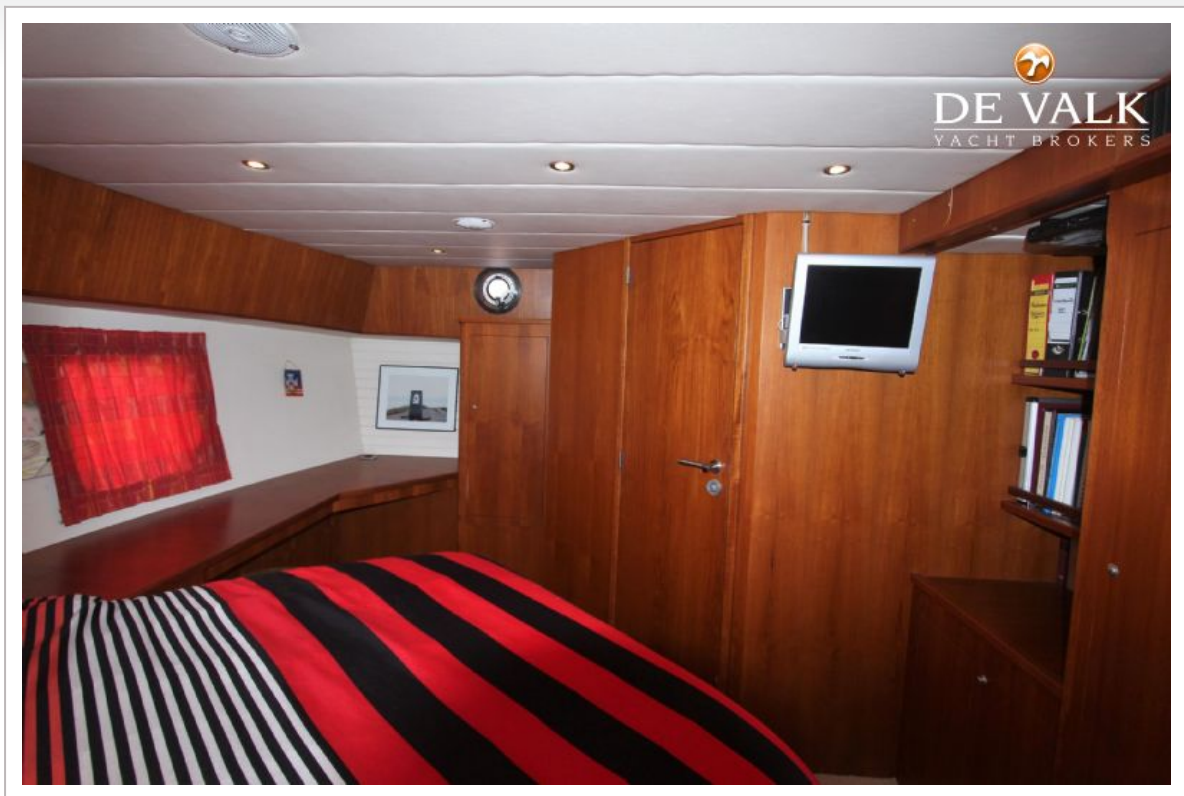
PILOT 50 TOPCOCKPIT



PILOT 50 TOPCOCKPIT



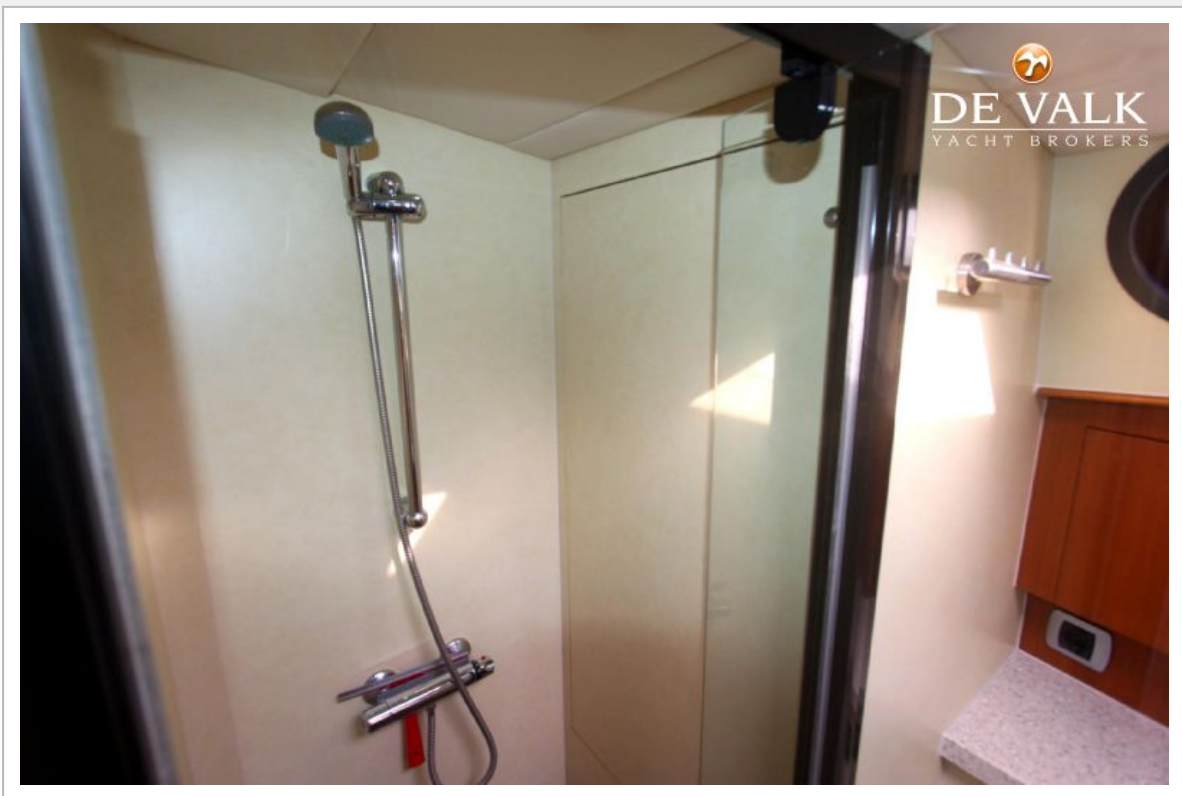
PILOT 50 TOPCOCKPIT



PILOT 50 TOPCOCKPIT



PILOT 50 TOPCOCKPIT



PILOT 50 TOPCOCKPIT



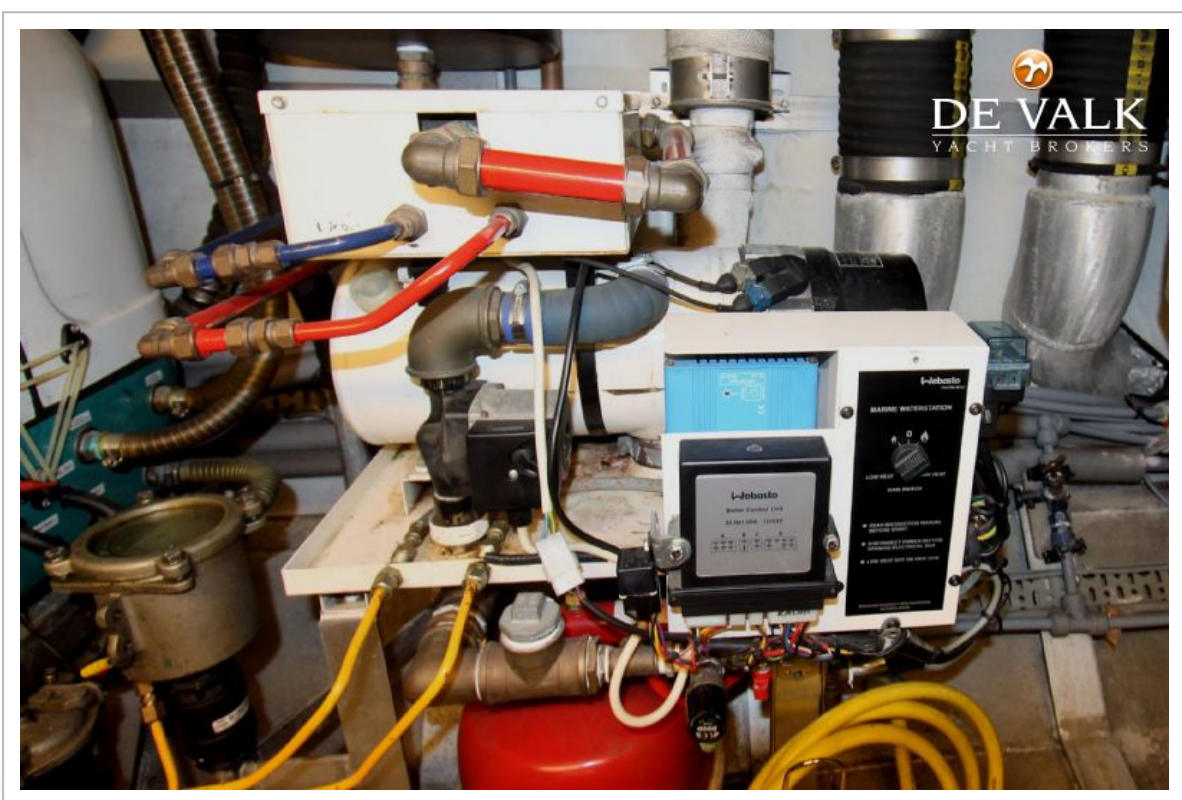
PILOT 50 TOPCOCKPIT



PILOT 50 TOPCOCKPIT



PILOT 50 TOPCOCKPIT



PILOT 50 TOPCOCKPIT



