



## BARKAS 1100 OK

# BARKAS 1100 OK

## BROKER'S COMMENTS

The Barkas 1100 OK "Waterleeuw" is built by Vroegh & Alblas and provided with a spacious cockpit, outside and inside steering position. She is motorized through a 62HP Peugeot engine. Due the French doors of this 1100 OK you can enter the saloon easily. The interior is finished in mahagony. This Barkas comes with a cockpit cover, so you can sail with all weather conditions.

*Michael de Jong*

## SPECIFICATIONS

<b>Dimensions</b>	11.00 x 3.85 x 0.85 (m)	<b>Builder</b>	Vroegh & Alblas
<b>Built</b>	1995	<b>Cabins</b>	1
<b>Material</b>	Steel	<b>Berths</b>	4
<b>Engine(s)</b>	1 x Peugeot diesel	<b>Hp/Kw</b>	62.00 (hp), 45.57 (kw)
<b>Asking price</b>	sold (VAT )	<b>Lying</b>	at sales office

## CONTACT

<b>Sales office</b>	De Valk Loosdrecht B.V.	<b>Telephone</b>	+31 (0)35 582 90 30
<b>Address</b>	't Breukeleveense Meentje 6 1231LM Loosdrecht / Wijdmeren NL	<b>E-mail</b>	loosdrecht@devalk.nl

## DISCLAIMER

These particulars are given in good faith as supplied but cannot be guaranteed.



## GENERAL

Model	BARKAS 1100 OK
Type	motor yacht
LOA (m)	11,00
Beam (m)	3,85
Draft (m)	0,85
Headroom (m)	2,00
Year built	1995
Builder	Vroegh & Alblas
Country	The Netherlands
Hull material	steel
Hull colour	
Hull thickness (mm)	Dark blue
Hull shape	deep-V
Superstructure material	steel
Rubbing strake	fender rope
Deck material	steel
Deck finish	non-skid paint
Superstructure deck finish	non-skid paint
Cockpit deck finish	teak
Window frame	aluminium
Portholes	aluminium Gebo
Mast can be lowered	manual
Fuel tank (litre)	steel 600
Level indicator (fuel tank)	yes
Freshwater tank (litre)	stainless steel 500
Level indicator (freshwater)	yes
Blackwater tank (litre)	stainless steel 70
Wheel steering	hydraulic
Inside helm position	yes
Outside helm position	with remote control



## ACCOMMODATION

Cabins	1
Berths	4
Floor	carpet
Saloon	yes
Headroom saloon (m)	2
Heating	Trumatic 2800
Dinette	yes
Opening door to cockpit	yes
Galley	yes
Countertop	Duropol
Sink	stainless steel
Cooker	calor gas Spinflo 4-burners
Fridge	Electrolux (12v/220v/gas)
Hot water system	on central heating Sigmar 40L
Water pressure system	electrical
Owners cabin	v-bed
Wardrobe	hanging and shelves
Bathroom	shared
Toilet	shared
Toilet system	electric
Wash basin	in the bathroom
Shower	shared Prepared, not connected
Guest cabin 1	double bed
Wardrobe	shelves

## MACHINERY

No of engines	1
Make	Peugeot
HP	62,00
kW	45,57



# BARKAS 1100 OK

Fuel	diesel
Maximum speed (kn)	
Engine cooling system	freshwater heat exchanger
Drive	shaft
Engine controls	bowden cable
Gearbox	Delta 30
Bowthruster	electric Technautic 4kgf
Exhaust	watercooled
Propeller type	fixed
Propeller shaft material	stainless steel
Shaft lubrication	grease
Batteries	1 x 12V 95Ah, 1 x 12V 170Ah
Battery charger	Waeco
Shorepower	with cable

## NAVIGATION

Compass	Suunto
Depth sounder/log	Vetus Combi-3
Rudder angle indicator	yes
Navigation lights	yes

## EQUIPMENT

Storm blinds	yes
Cockpit cover	yes
Winter cover	yes
Boarding ladder	stainless steel
Deck shower	yes
Anchor	yes
Anchor chain	yes
Windlass	electrical
Deck wash	yes

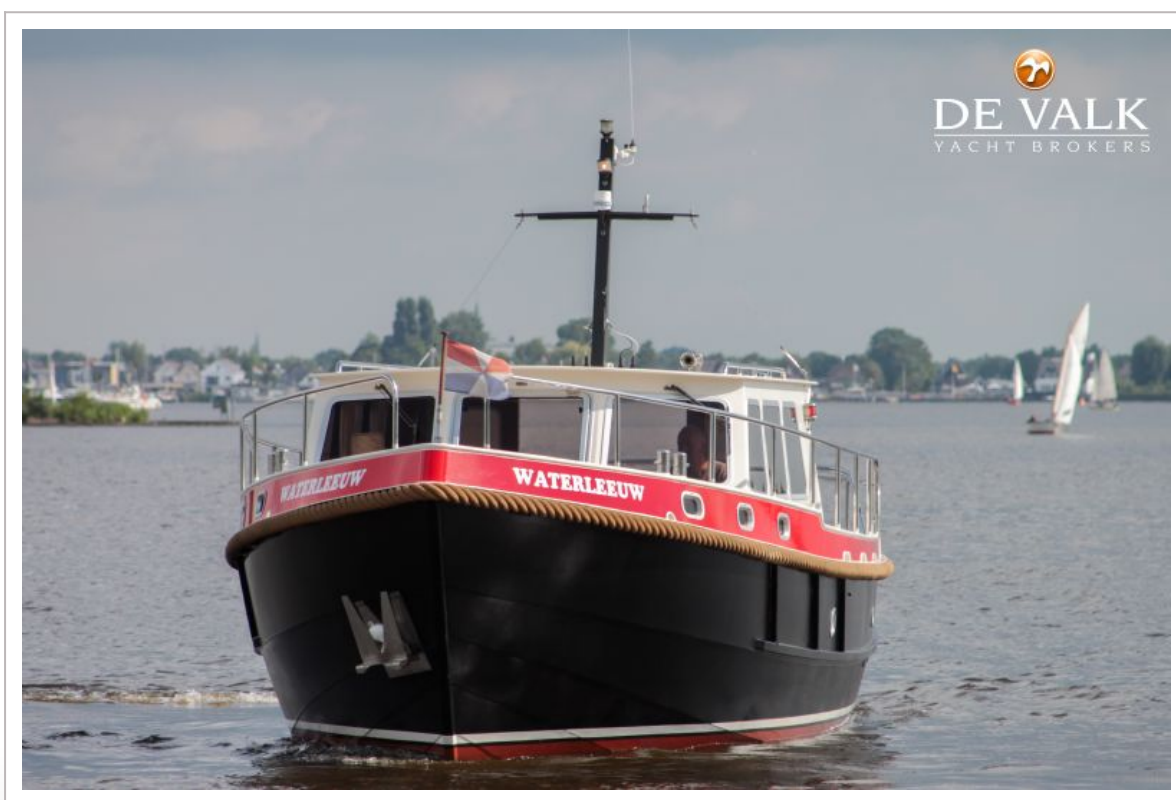


# BARKAS 1100 OK

Sea railing	stainless steel
Grab rail (superstructure)	stainless steel
Lifejackets	yes
Wiper	yes
Horn	electric
Radio-cd player	Pioneer DEH-425
Speakers in salon	yes
Clock - barometer	yes



# BARKAS 1100 OK



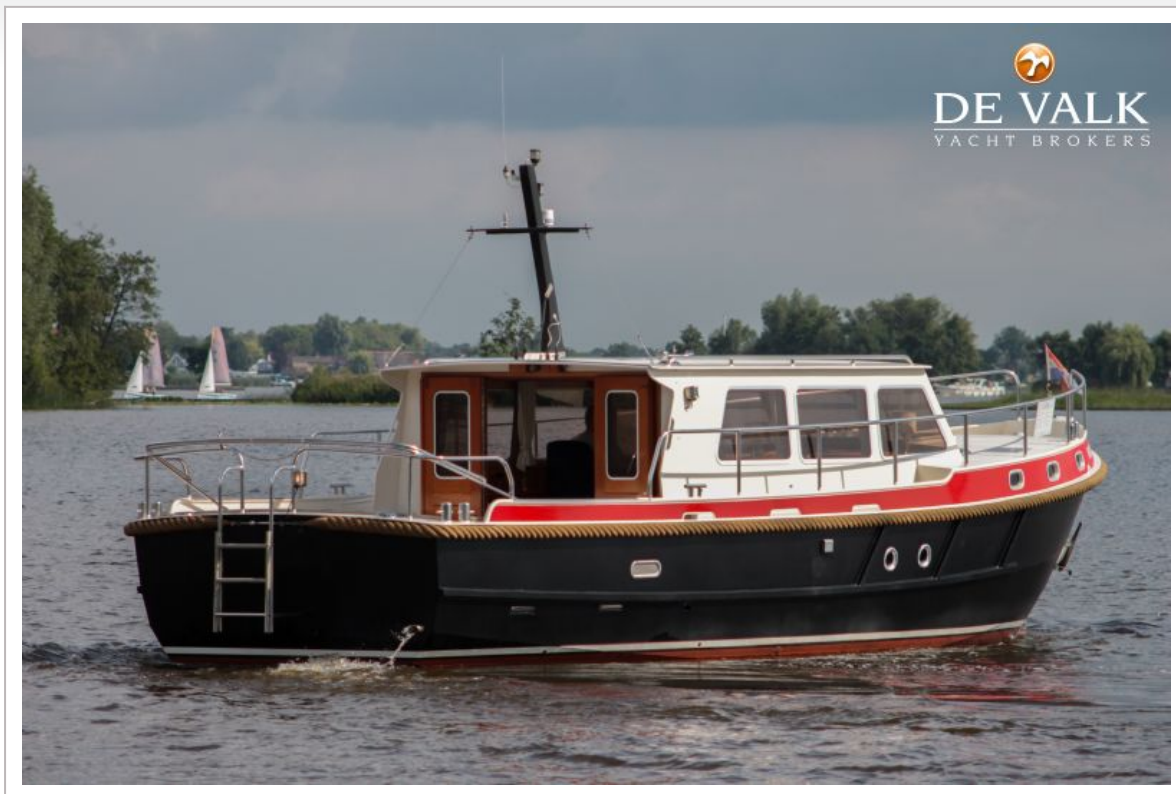


# BARKAS 1100 OK





# BARKAS 1100 OK



# BARKAS 1100 OK





# BARKAS 1100 OK



# BARKAS 1100 OK





# BARKAS 1100 OK

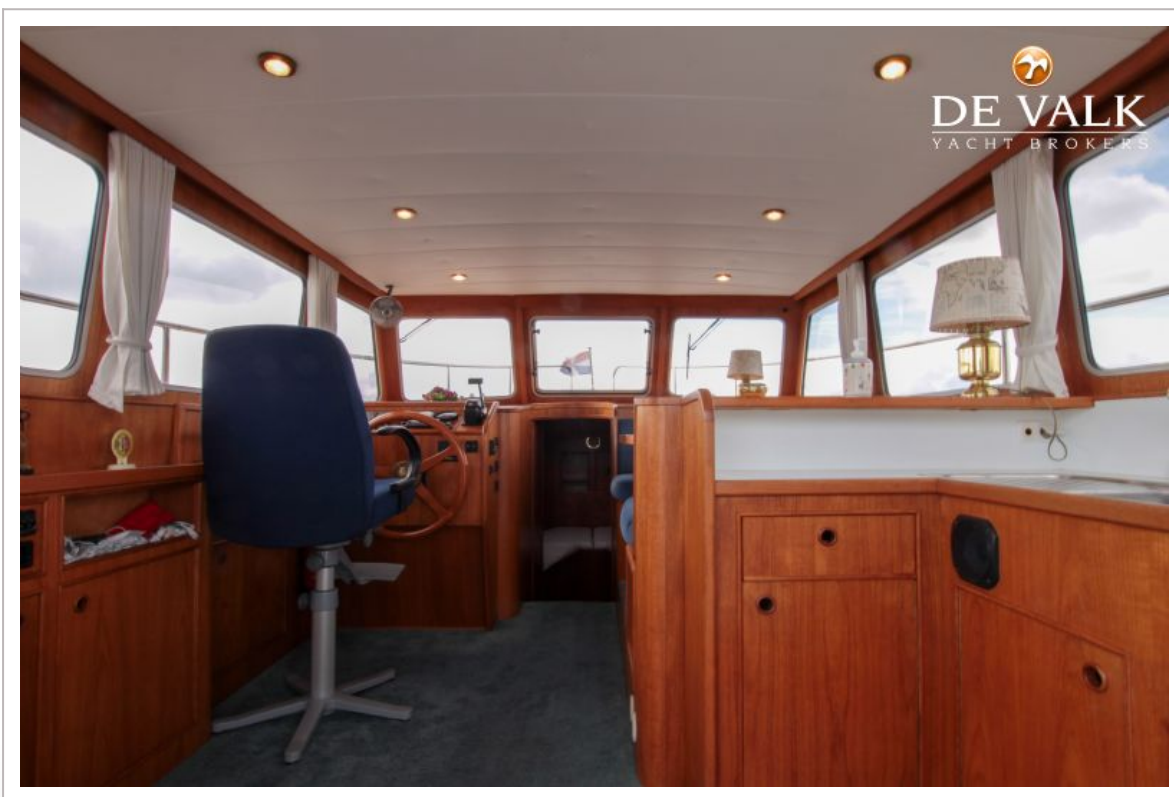


# BARKAS 1100 OK



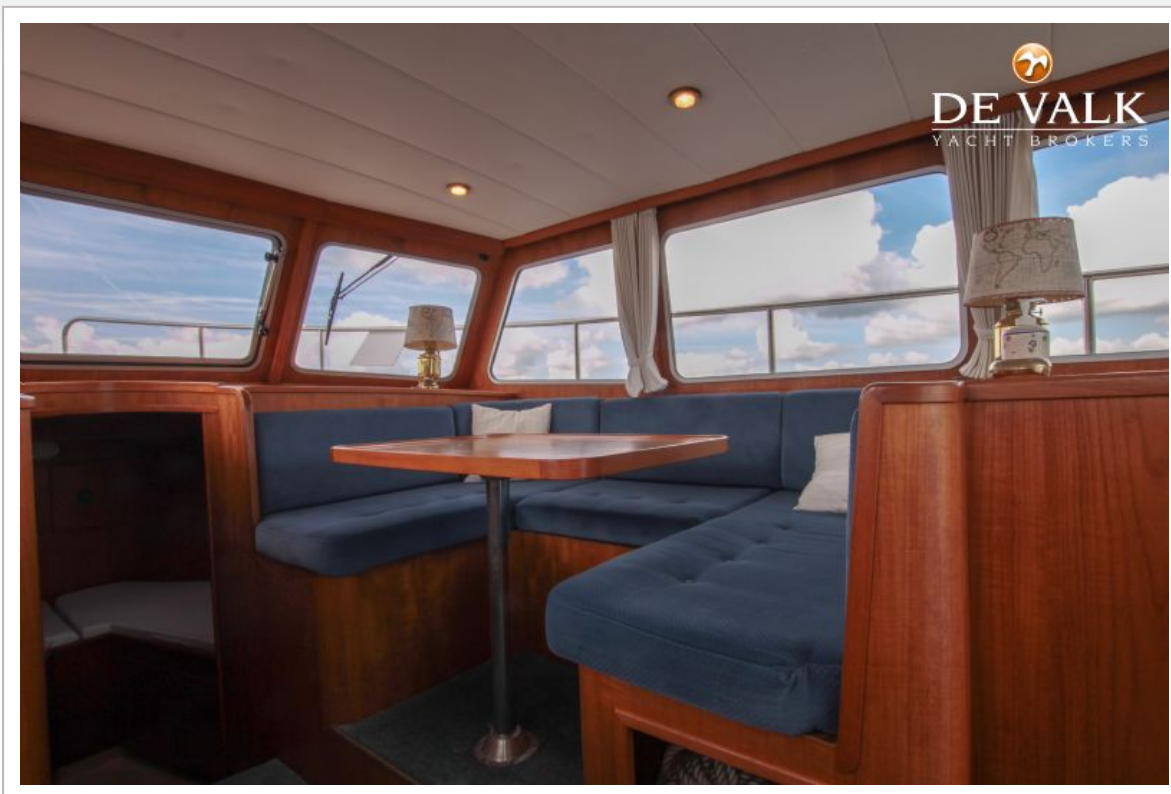


# BARKAS 1100 OK





# BARKAS 1100 OK



# BARKAS 1100 OK

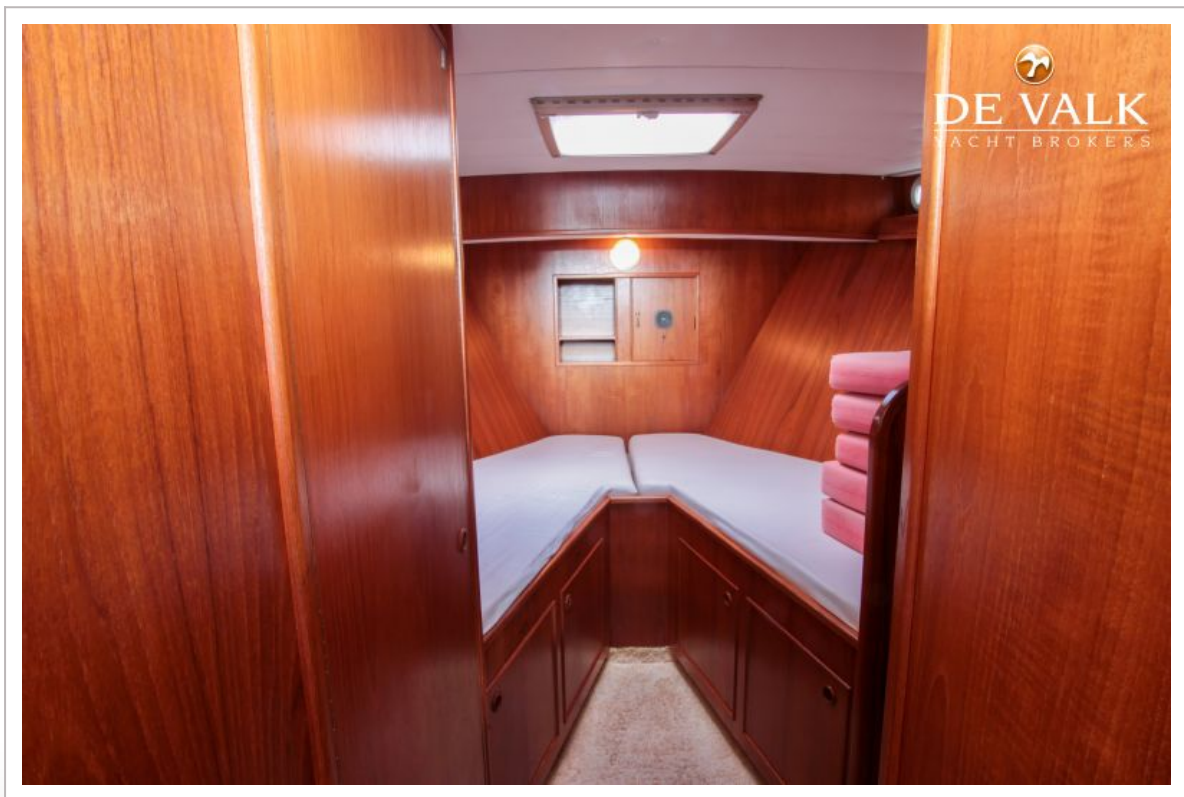




# BARKAS 1100 OK

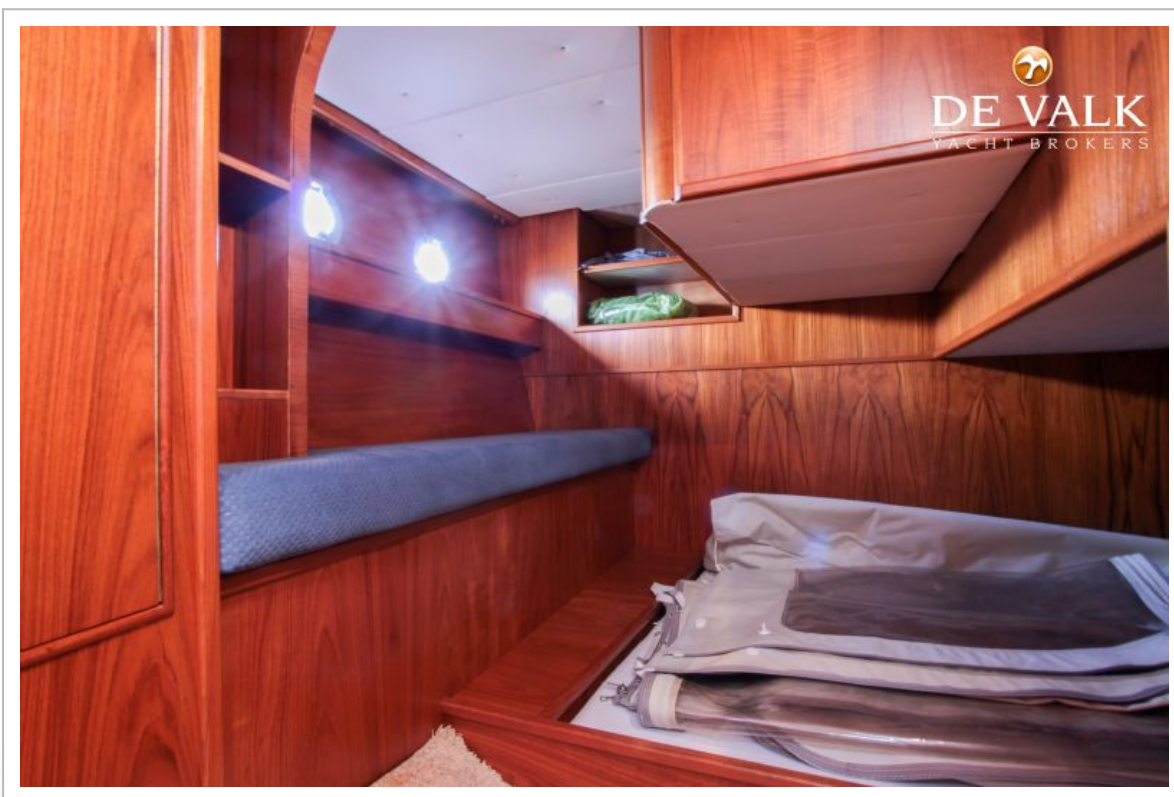
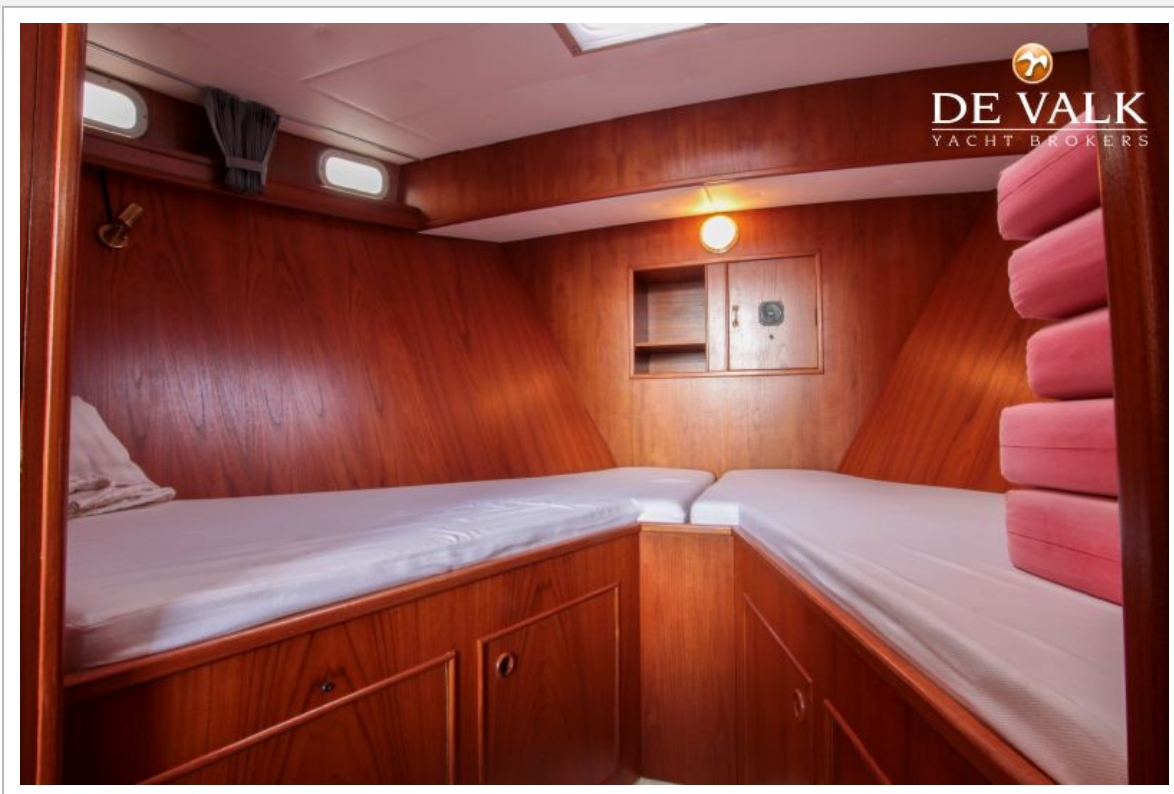


# BARKAS 1100 OK

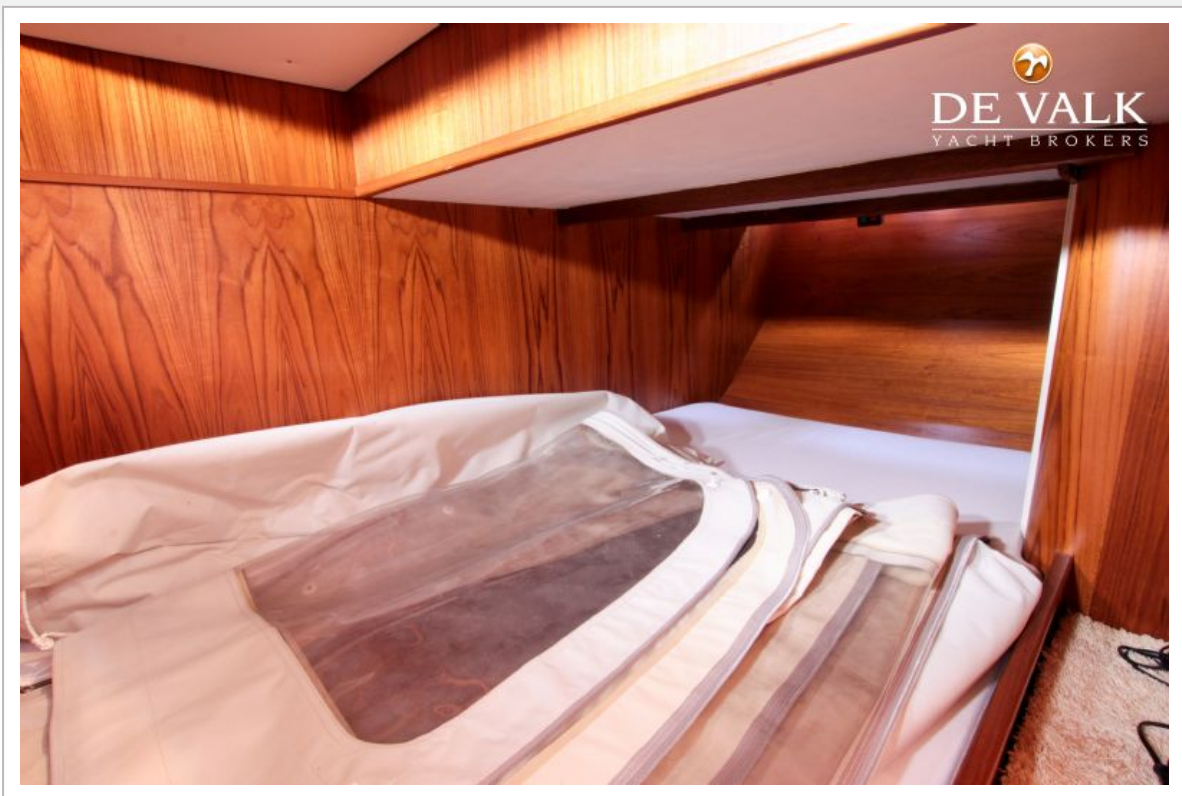




# BARKAS 1100 OK

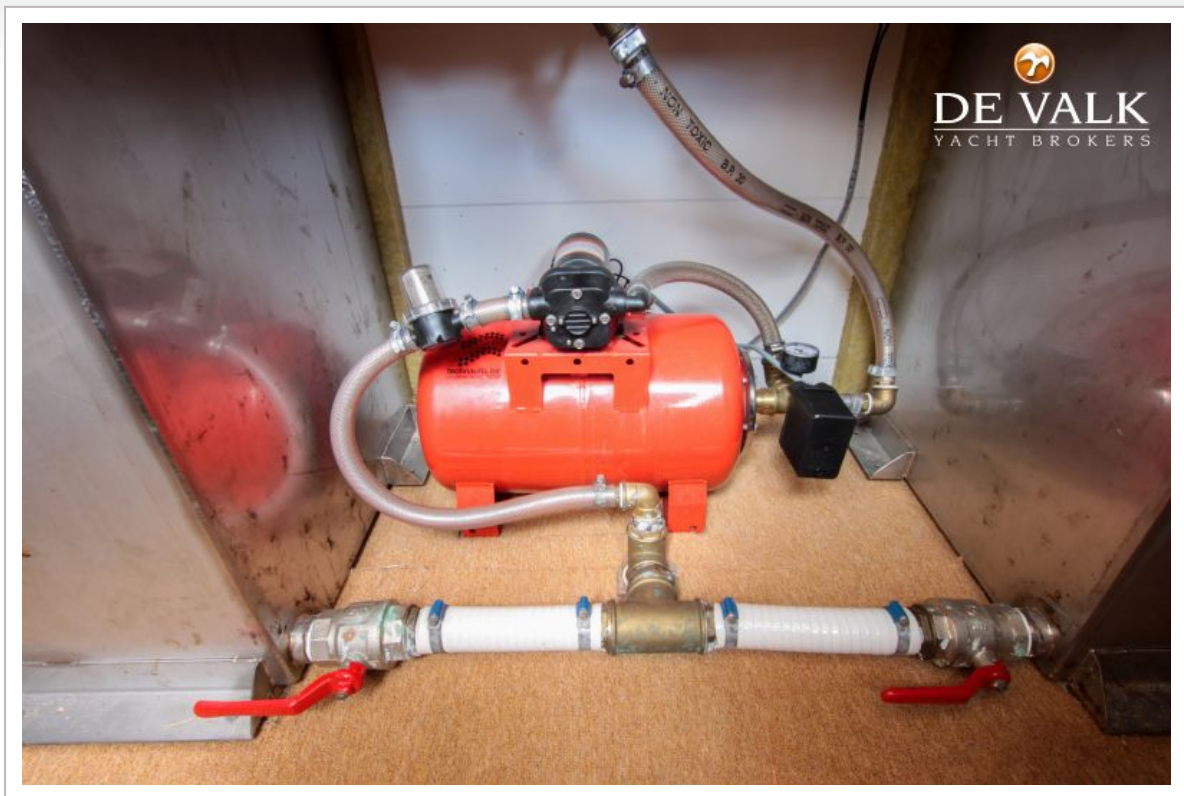


# BARKAS 1100 OK





# BARKAS 1100 OK





# BARKAS 1100 OK

