



DE VALK
YACHT BROKERS



HUNTER 33



DE VALK
YACHT BROKERS

HUNTER 33

BROKER'S COMMENTS

This Hunter 33 is produced by Hunter Marine, the leader in the North American sailing yachts. Comfortable, easy and safe sailing due to her special B&R rigging, which means without back stay while the spreaders are swept back for support and to allow a lighter mast. This in combination with her beautiful woodwork and the space inside makes the 33 the perfect sailing boat for cruising and blue water sailing. From the first owner!

Arjen Hoeksma

SPECIFICATIONS

Dimensions	10.21 x 3.51 x 1.37 (m)	Builder	Hunter Yachts
Built	2005	Cabins	2
Material	GRP	Berths	6
Engine(s)	1 x Volvo Penta MD2020 diesel	Hp/Kw	20.00 (hp), 14.70 (kw)
Asking price	sold (VAT)	Lying	at sales office

CONTACT

Sales office	De Valk Loosdrecht B.V.	Telephone	+31 (0)35 582 90 30
Address	't Breukeleveense Meentje 6 1231LM Loosdrecht / Wijdmeren NL	E-mail	loosdrecht@devalk.nl

DISCLAIMER

These particulars are given in good faith as supplied but cannot be guaranteed.



GENERAL

Model	HUNTER 33
Type	sailing yacht
LOA (m)	10,21
LWL (m)	8,97
Beam (m)	3,51
Draft (m)	1,37
Air draft (m)	14,20
Headroom (m)	1,90
Year built	2005
Builder	Hunter Yachts
Country	U.S.A.
Displacement (t)	4,7
CE norm	A
Hull material	GRP
Hull colour	white
Hull shape	round-bilged
Rubbing strake	aluminum
Deck material	GRP
Deck finish	non-skid moulded in
Cockpit deck finish	synthetic teak
Window frame	aluminium
Window material	perspex
Fuel tank (litre)	95 L.
Level indicator (fuel tank)	yes
Freshwater tank (litre)	polyethylene 189 L.
Level indicator (freshwater)	yes
Blackwater tank (litre)	polyethylene 94 L.
Level indicator (blackwater)	yes
Wheel steering	
Outside helm position	yes



Emergency tiller yes

ACCOMMODATION

Cabins	2
Berths	6
Interior	cherry
Headroom saloon (m)	1,90
Chart table	yes
Dinette to convert into berth	yes
Galley	yes
Countertop	corian
Sink	stainless steel
Cooker	calor gas
Oven	yes
Gas alarm	Carbon Monoxide alarm
Fridge	Waeco Coomatic
Freezer	In fridge
Hot water system	220V + engine Boiler 19 L.
Water pressure system	electrical
Owners cabin	double bed
Bed length (m)	2,00
Wardrobe	shelves
Toilet	shared
Toilet system	manual
Shower	yes
Guest cabin 1	double bed
Bed length (m)	2,00
Wardrobe	hanging and shelves

MACHINERY

No of engines 1



Make	Volvo Penta
Type	MD2020
HP	20,00
kW	14,70
Fuel	diesel
Year installed	2005
Engine hours	410
Engine cooling system	freshwater heat exchanger
Drive	sail-drive
Engine controls	bowden cable
Exhaust	watercooled
Manual bilge pump	yes
Electric bilge pump	yes
Batteries	Vetus Marine Battery 125ah/12v
Service battery	Vetus SMF Marine Battery 125ah/12V/25A
Shorepower	with cable

NAVIGATION

Compass	yes
Depth sounder	Raymarine ST60
Windset	Raymarine ST60
VHF	Midland
GPS	GPSmap 176C Garmin
EPIRB	yes

EQUIPMENT

Fixed windscreen	yes
Sprayhood	yes
Bimini	yes
Cockpit cushions	yes
Cockpit table	yes



Bathing platform	yes
Boarding ladder	stainless steel
Anchor	yes
Anchor chain	yes
Sea railing	wire
Railing side opening gates	yes
Fenders	yes
Mooring lines	yes
TV	OK.
Radio-cd player	AEG
Speakers in salon	yes
Fire extinguisher	yes

RIGGING

Rigging	B&R
Brand mast	Seldén
Material mast	aluminium
Spreaders	yes
Mainsail	yes
Mainsail cover	yes
Genoa furler	yes
Genoa sheetwinches	Lewmar 30
Multifunctional winches	2x Lewmar 16
Extra info	Selden Rodkick



HUNTER 33



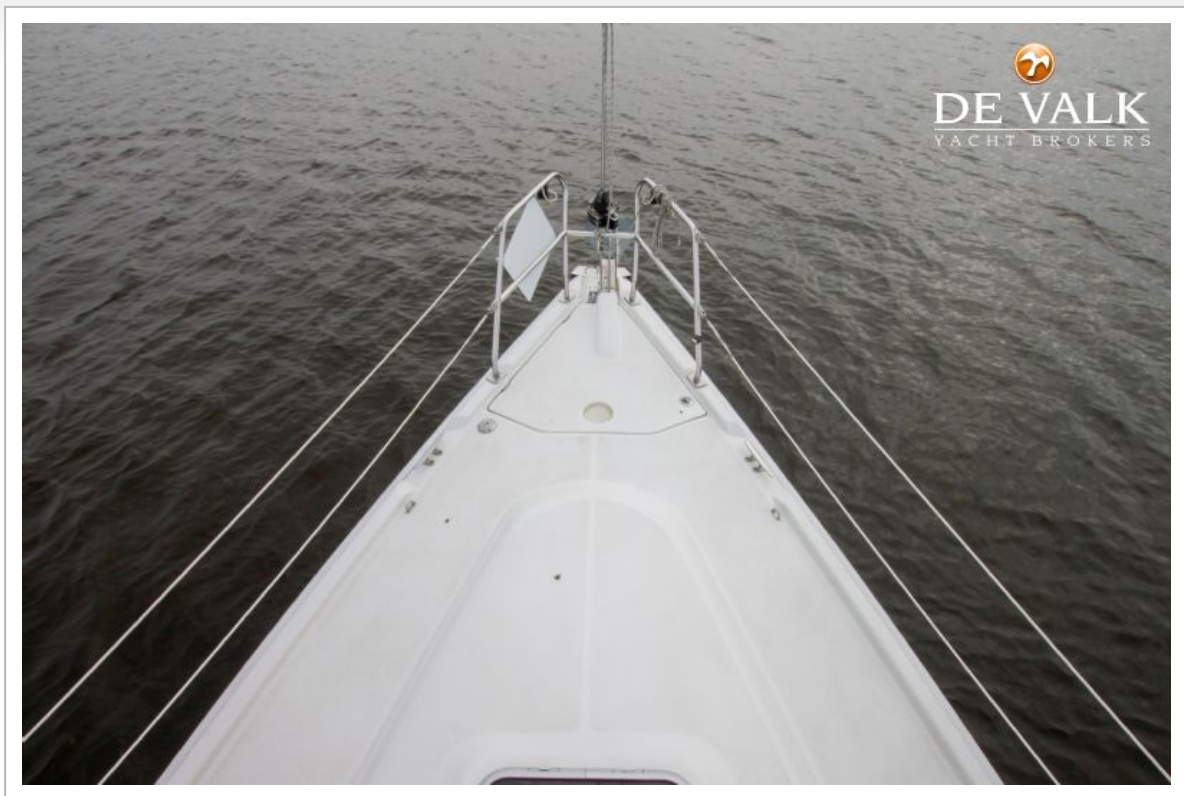
HUNTER 33



HUNTER 33



HUNTER 33



HUNTER 33



HUNTER 33



HUNTER 33



HUNTER 33

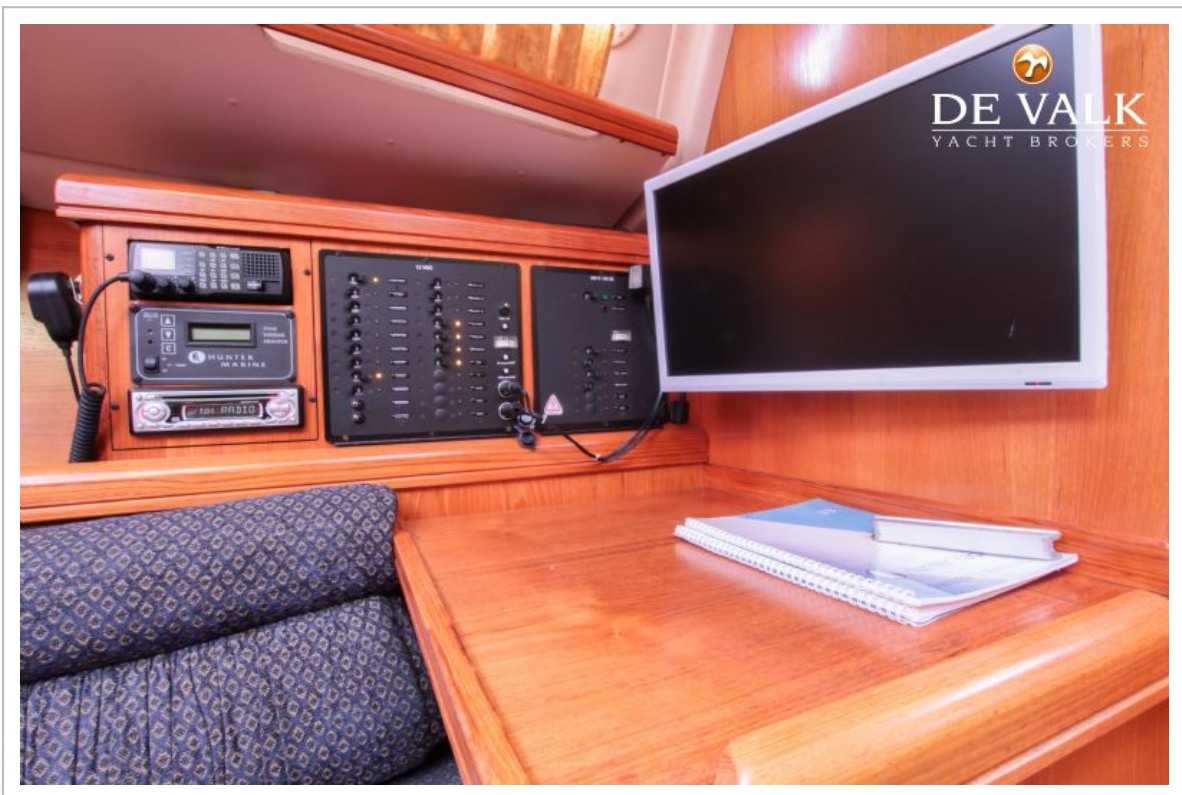




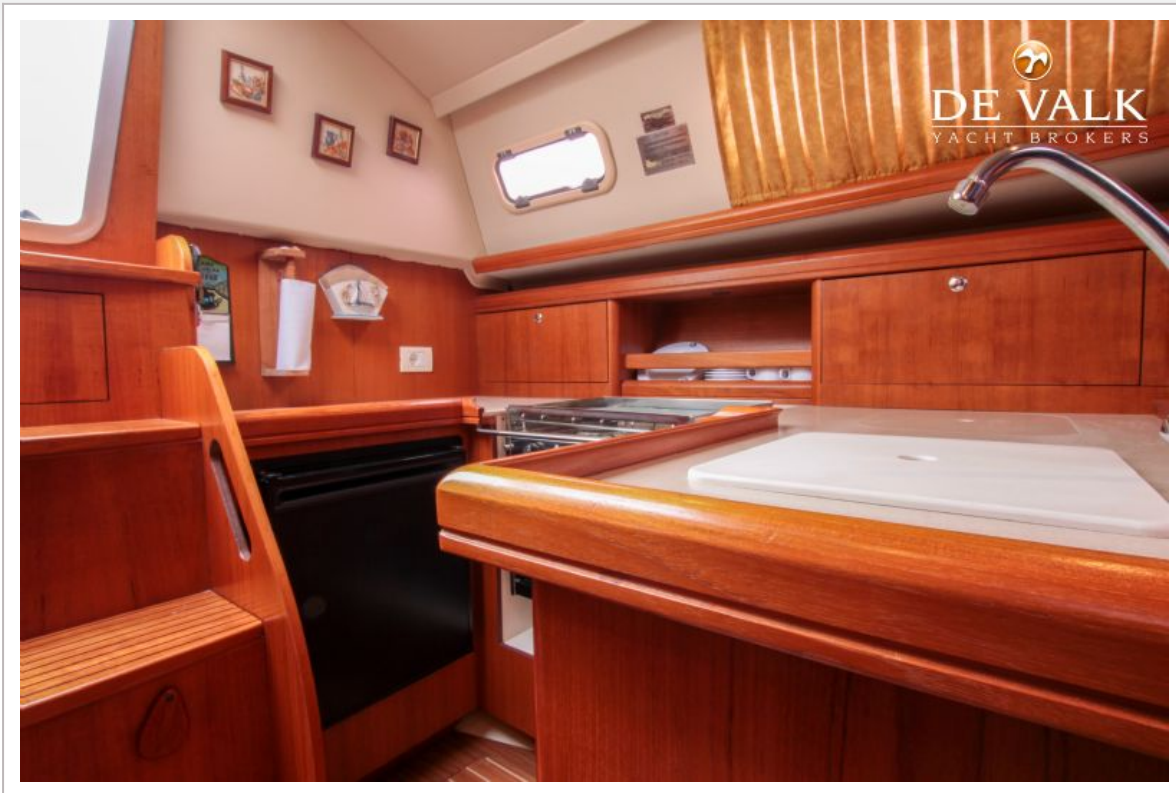
HUNTER 33



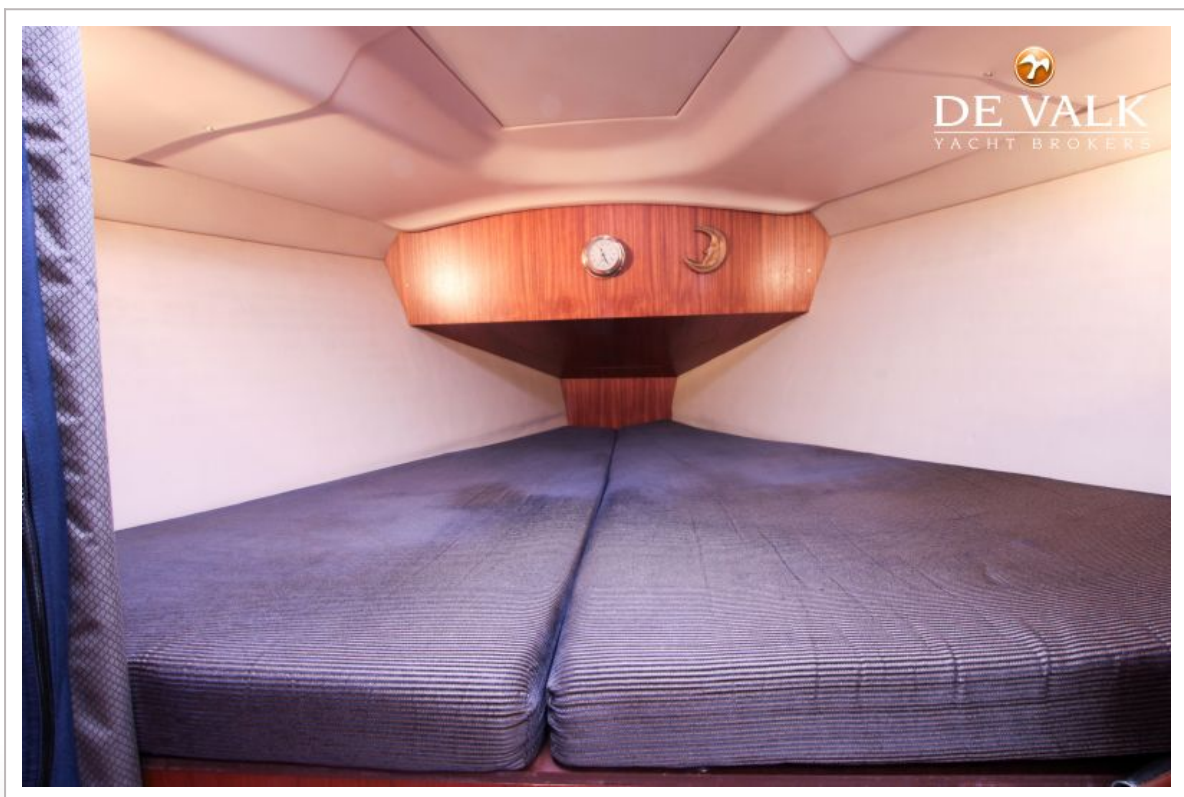
HUNTER 33



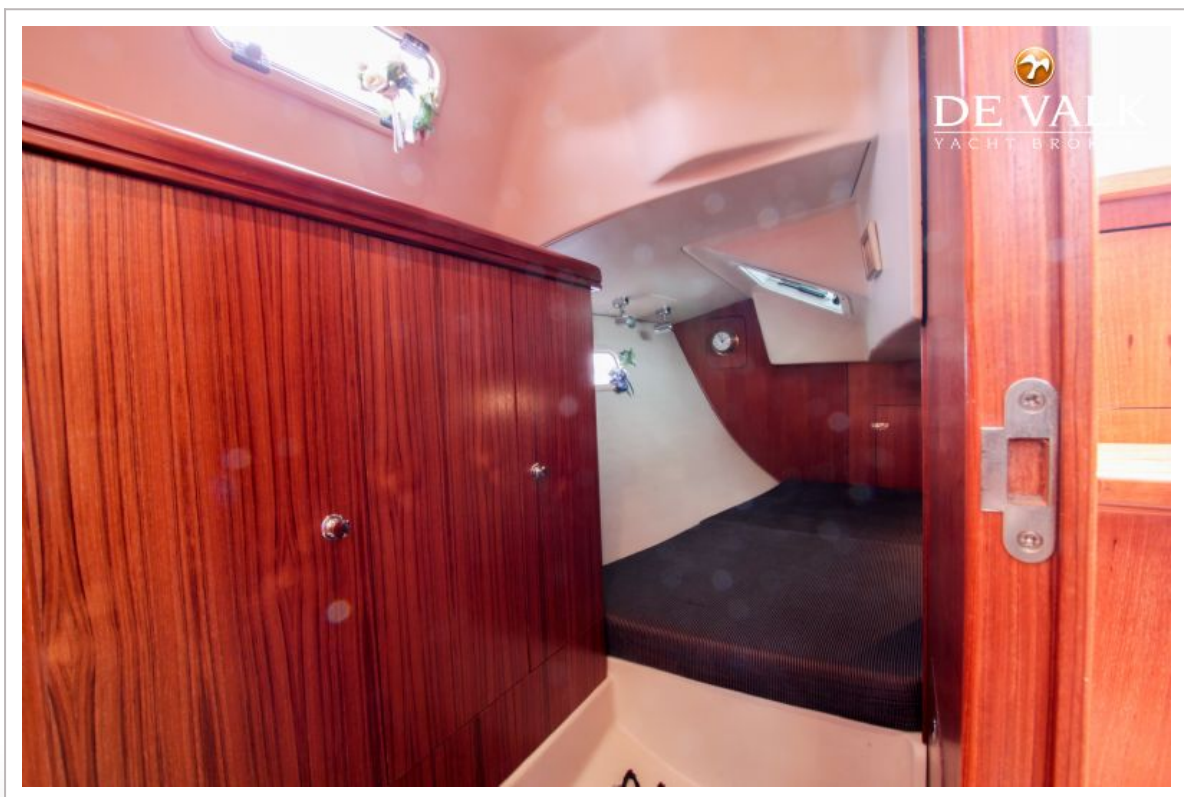
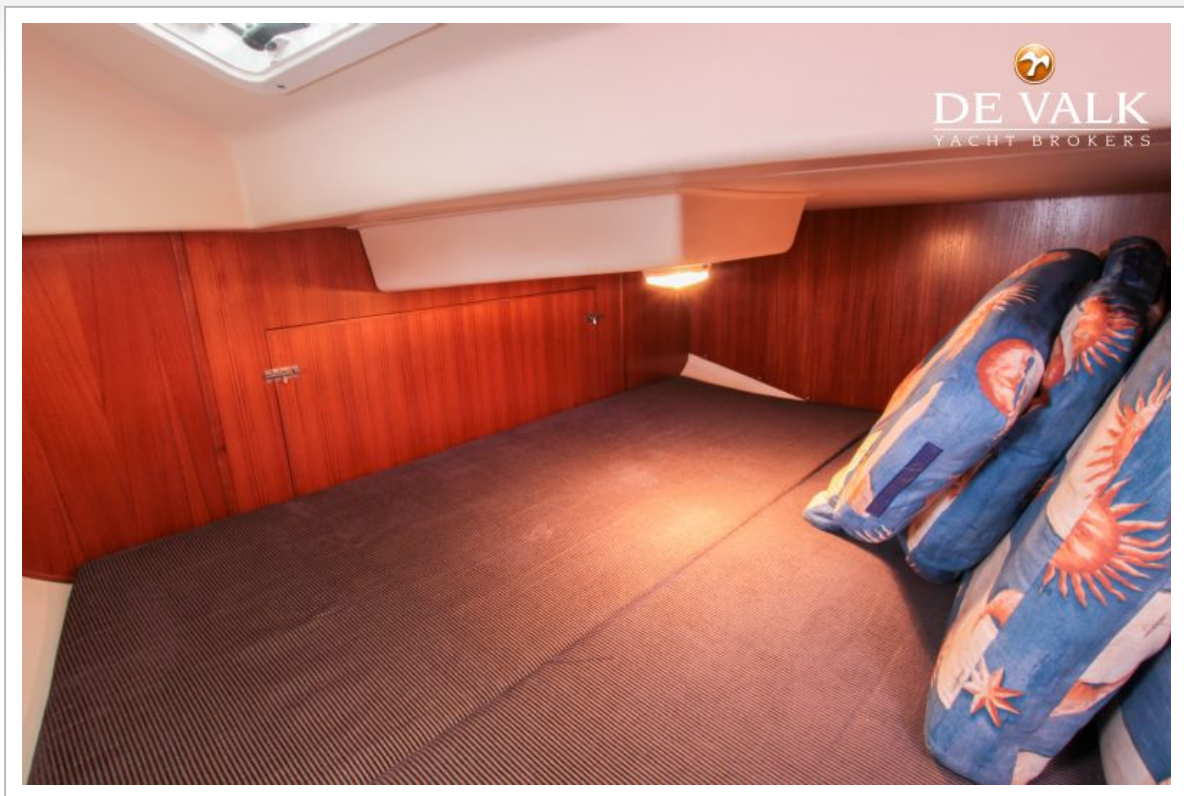
HUNTER 33



HUNTER 33



HUNTER 33





HUNTER 33

