



## OCEAN ALEXANDER 39

# OCEAN ALEXANDER 39

## BROKER'S COMMENTS

The Ocean Alexander 39 with her twin 300 HP Cummins is suitable for day cruising as well as going fast on larger waters. The 39 has proven her abilities in Germany, The Netherlands and Croatia. In 2014 the current owner updated the interior, resized the owners bed and renewed the propellers and shafts. The comprehensive equipment makes sure you will have a pleasant stay on the Ocean Alexander during a longer journey.

*Koen Mulder*

## SPECIFICATIONS

<b>Dimensions</b>	13.35 x 4.24 x 1.00 (m)	<b>Builder</b>	Alexander Marine International
<b>Built</b>	1993	<b>Cabins</b>	2
<b>Material</b>	GRP	<b>Berths</b>	6
<b>Engine(s)</b>	2 x Cummins 6BTA5.9-M2 diesel	<b>Hp/Kw</b>	2 x 300.00 (hp), 220.50 (kw)
<b>Asking price</b>	sold (VAT )	<b>Lying</b>	at sales office

## CONTACT

<b>Sales office</b>	De Valk Loosdrecht B.V.	<b>Telephone</b>	+31 (0)35 582 90 30
<b>Address</b>	't Breukeleveense Meentje 6 1231LM Loosdrecht / Wijdmeren NL	<b>E-mail</b>	loosdrecht@devalk.nl

## DISCLAIMER

These particulars are given in good faith as supplied but cannot be guaranteed.



## GENERAL

Model	OCEAN ALEXANDER 39
Type	motor yacht
LOA (m)	13,35
Beam (m)	4,24
Draft (m)	1,00
Air draft (m)	3,50
Year built	1993
Builder	Alexander Marine International
Country	Taiwan
Displacement (t)	13,5
Hull material	GRP
Hull colour	white
Hull shape	deep-V
Superstructure material	GRP
Rubbing strake	stainless steel
Deck material	GRP
Deck finish	non-skid moulded in
Superstructure deck finish	paint
Cockpit deck finish	paint
Antifouling (year)	2014
Window frame	aluminium
Window material	glass
Portholes	stainless steel
Flybridge	yes
Flybridge cover	yes
Flybridge suncover	yes
Radar arch	collapsible Below 3,50M
Fuel tank (litre)	stainless steel 1500
Level indicator (fuel tank)	yes
Freshwater tank (litre)	stainless steel 800



Level indicator (freshwater)	yes
Blackwater tank (litre)	GRP
Wheel steering	hydraulic
Inside helm position	yes
Flybridge helm position	hydraulic

## ACCOMMODATION

Cabins	2
Berths	6
Interior	teak
Floor	teak
Aft deck	yes
Saloon	yes
Headroom saloon (m)	2,10
Heating	diesel ducted hot air
Heating 2	diesel ducted hot air
Aft Cabin	yes
Dinette	yes
Galley	yes
Countertop	corian
Sink	stainless steel
Cooker	electric 4 burner
Microwave/oven combi	Bosch Gourmet 8402
Fridge	Norcold
Freezer	Norcold
Hot water system	220V + engine Raritan TR12S 45L
Water pressure system	electrical
Dishwasher	yes
Owners cabin	double bed
Bed length (m)	2,30
Wardrobe	hanging/drawers/shelves



Bathroom	en suite
Toilet	en suite
Toilet system	electric
Wash basin	in the bathroom
Shower	en suite 2M
Guest cabin 1	v-bed
Bed length (m)	1,90
Wardrobe	hanging/drawers/shelves
Bathroom	en suite
Toilet	en suite
Toilet system	electric
Wash basin	in the bathroom
Shower	shared
Wet bar	With grill and fridge

## MACHINERY

No of engines	2
Make	Cummins
Type	6BTA5.9-M2
HP	300,00
kW	220,50
Fuel	diesel
Year installed	1993
Maximum speed (kn)	20
Engine hours	1114 (20-10-2016)
Engine cooling system	freshwater heat exchanger
Drive	shaft
Engine controls	bowden cable
Gearbox	hydraulic
Bowthruster	electric
Sternthruster	electric



Propeller shaft material	stainless steel
Shaft lubrication	oilbath
Manual bilge pump	yes
Electric bilge pump	yes
Generator	Onan 6,5 MDKDP
Running hours generator	482 (20-10-2016)
Start battery	2x
Service battery	4x
Battery charger	Victron Centaur 12V50Ah
Shorepower	with cable
Trimtabs	yes

## NAVIGATION

Compass	yes
Electric compass	Autohelm ST7000
Depth sounder	Autohelm Tridata
Log	Autohelm Tridata
VHF	Mtech MT700
Autopilot	Autohelm ST7000
Rudder angle indicator	Autohelm ST7000
Radar	Furuno 1935
Plotter	Lowrance Elite 7M
Navtex	Furuno NX500
Searchlight	yes

## EQUIPMENT

Fixed windscreen	yes
Bimini	yes
Cockpit table	yes
Bathing platform	yes
Boarding ladder	stainless steel



Bow ladder	yes
Gangway	Hydraulic
Deck shower	yes
Anchor	Bruce
Anchor chain	Stainless Steel
Windlass	electrical
Sea railing	stainless steel
Railing side opening gates	yes
Lifebuoy	yes
Wiper	2 x
Window heating	yes
Horn	electric
Fenders	yes
Mooring lines	yes
Radio-cd player	yes
Speakers in salon	And Flybridge
Clock - barometer	yes



# OCEAN ALEXANDER 39





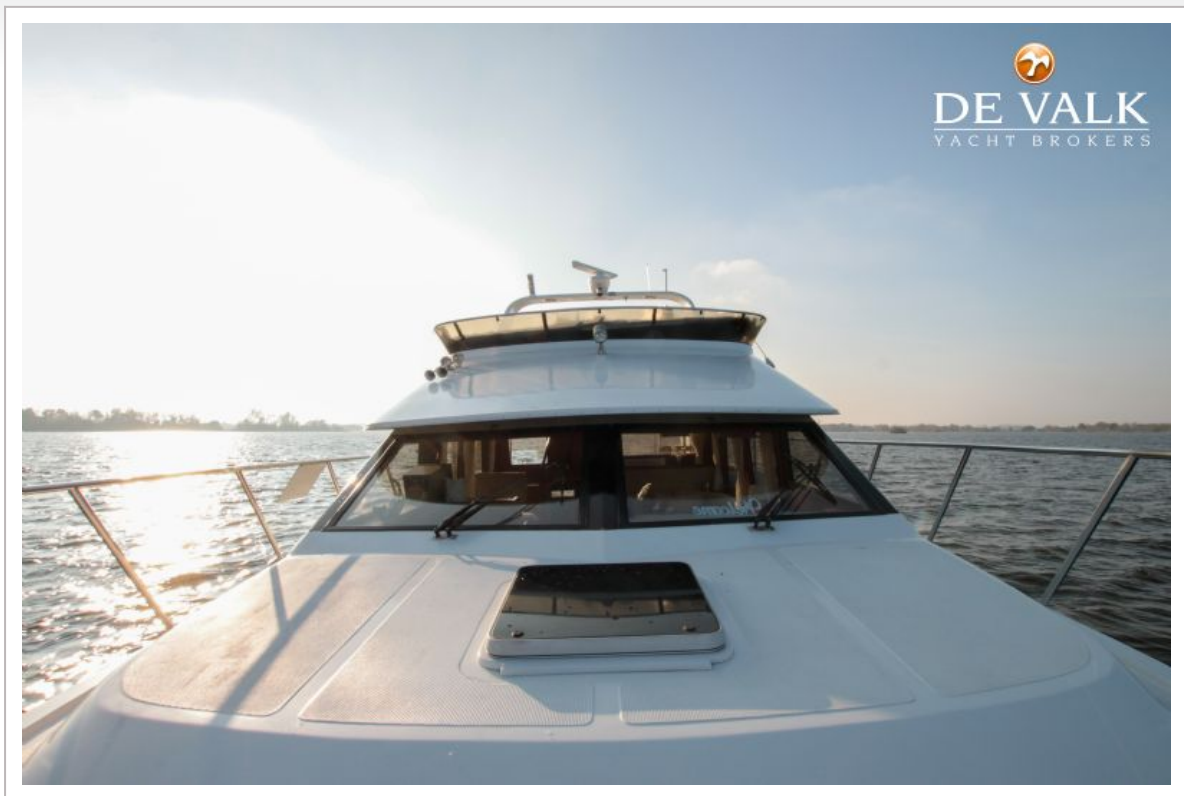
# OCEAN ALEXANDER 39



# OCEAN ALEXANDER 39

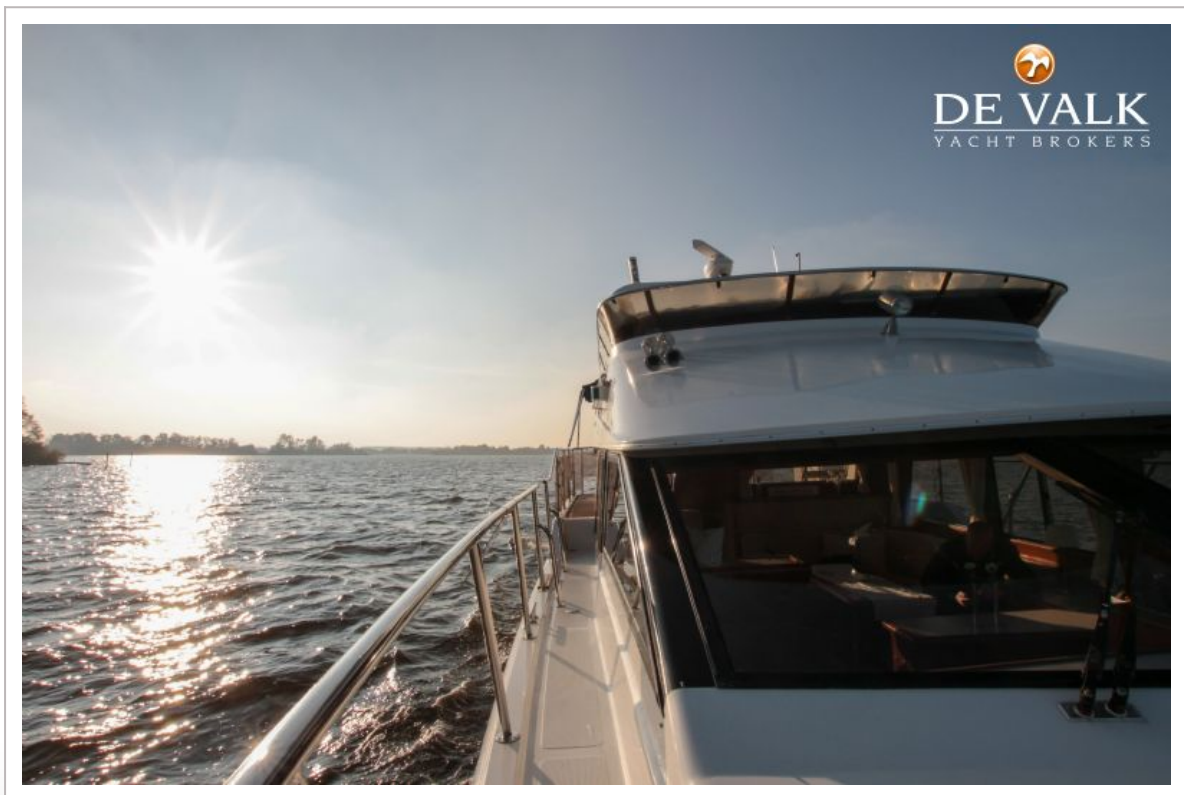


# OCEAN ALEXANDER 39

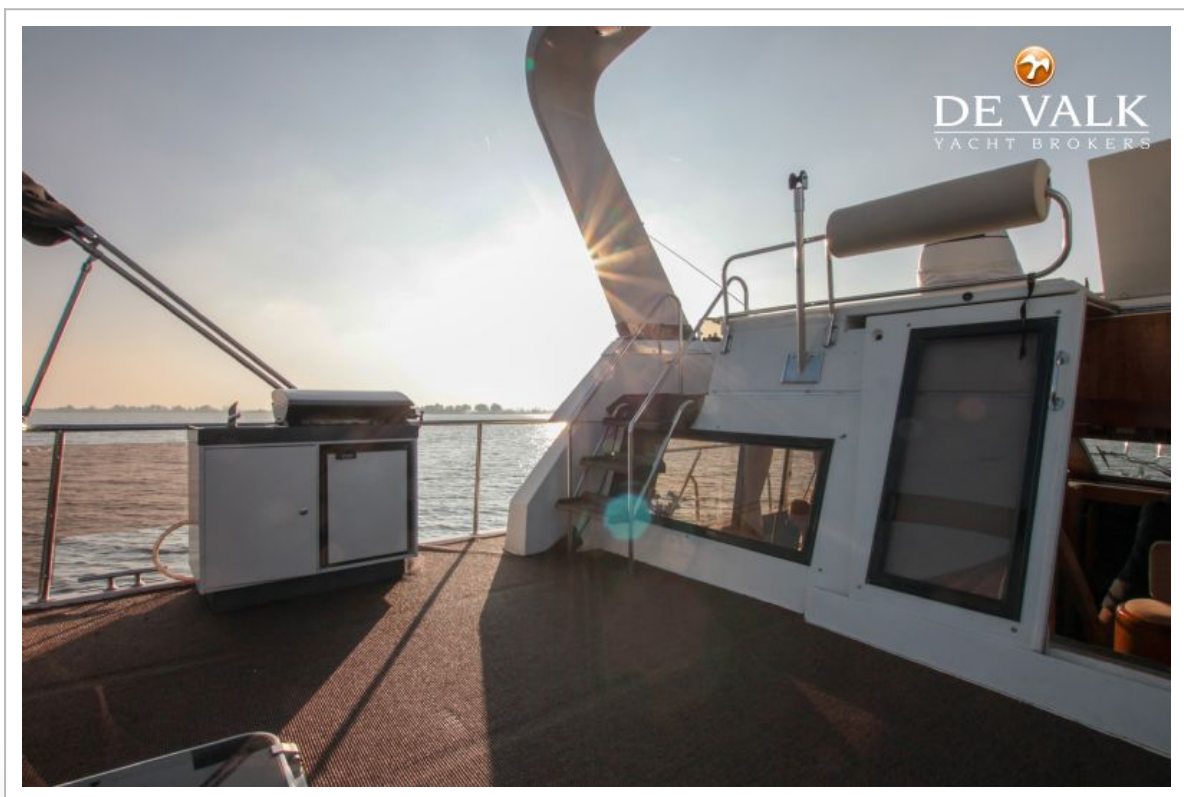




# OCEAN ALEXANDER 39

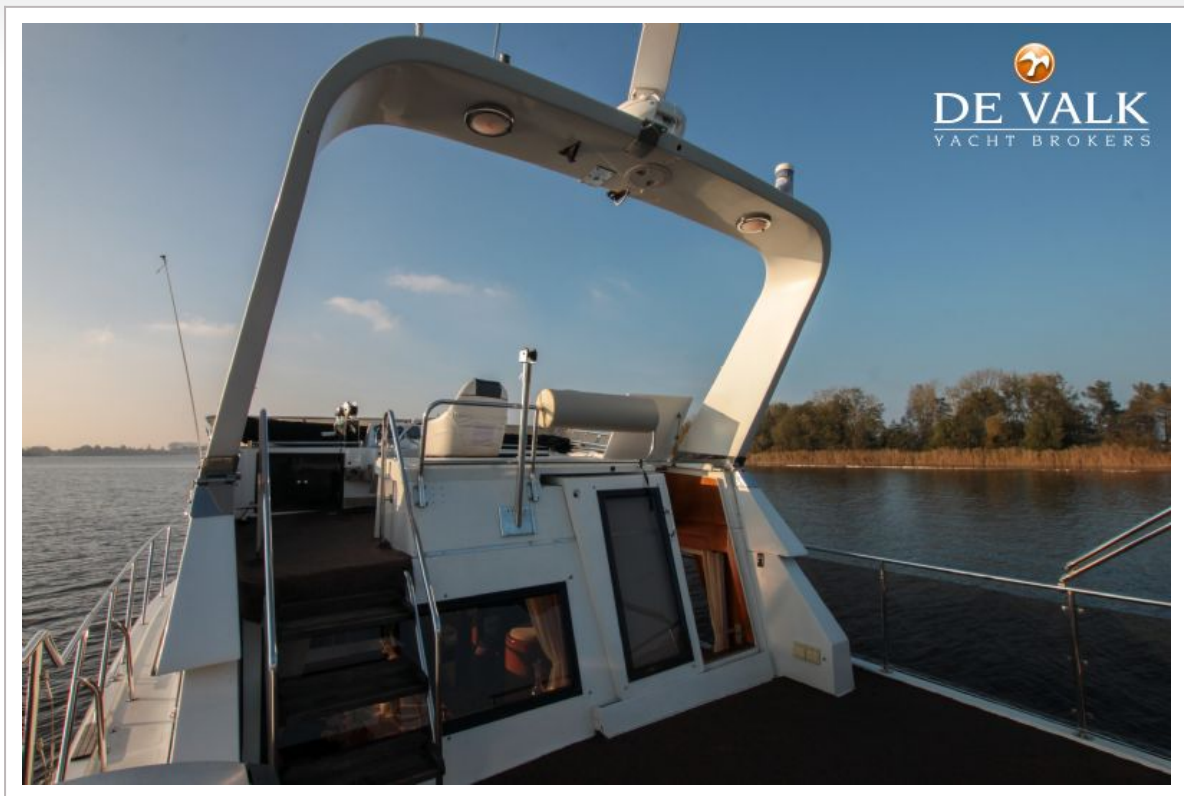


# OCEAN ALEXANDER 39





# OCEAN ALEXANDER 39



# OCEAN ALEXANDER 39



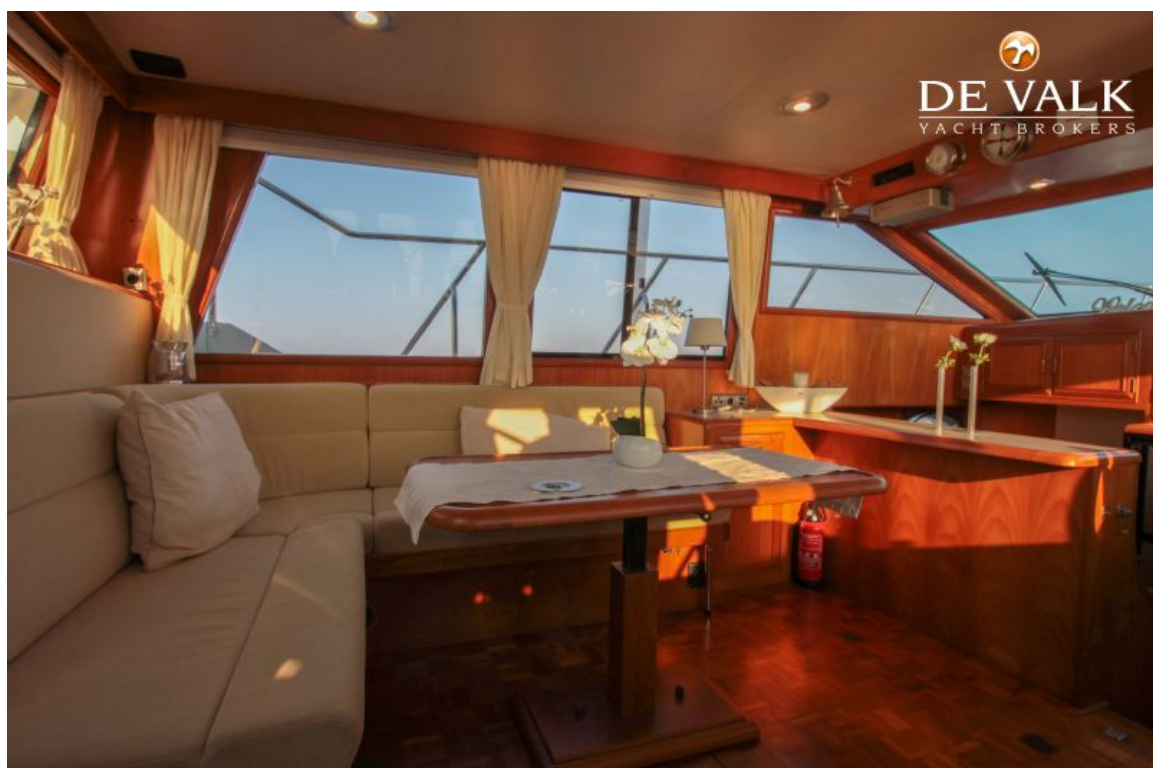


# OCEAN ALEXANDER 39

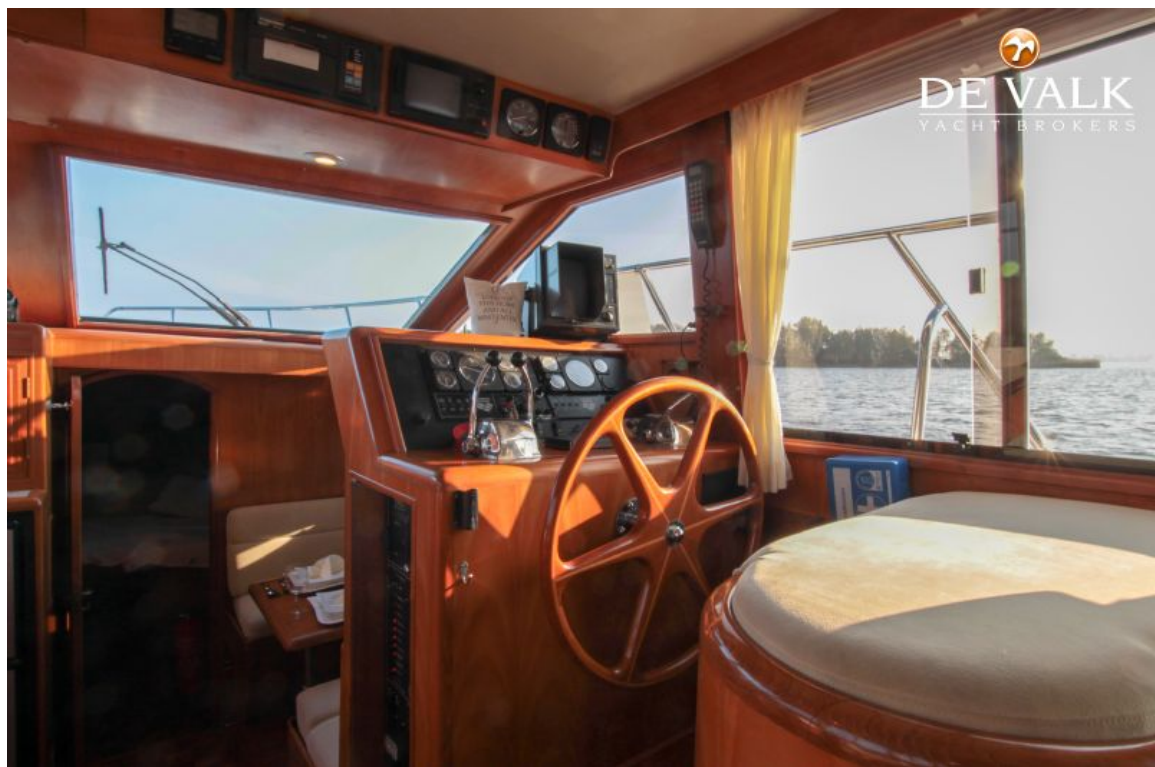




# OCEAN ALEXANDER 39



# OCEAN ALEXANDER 39

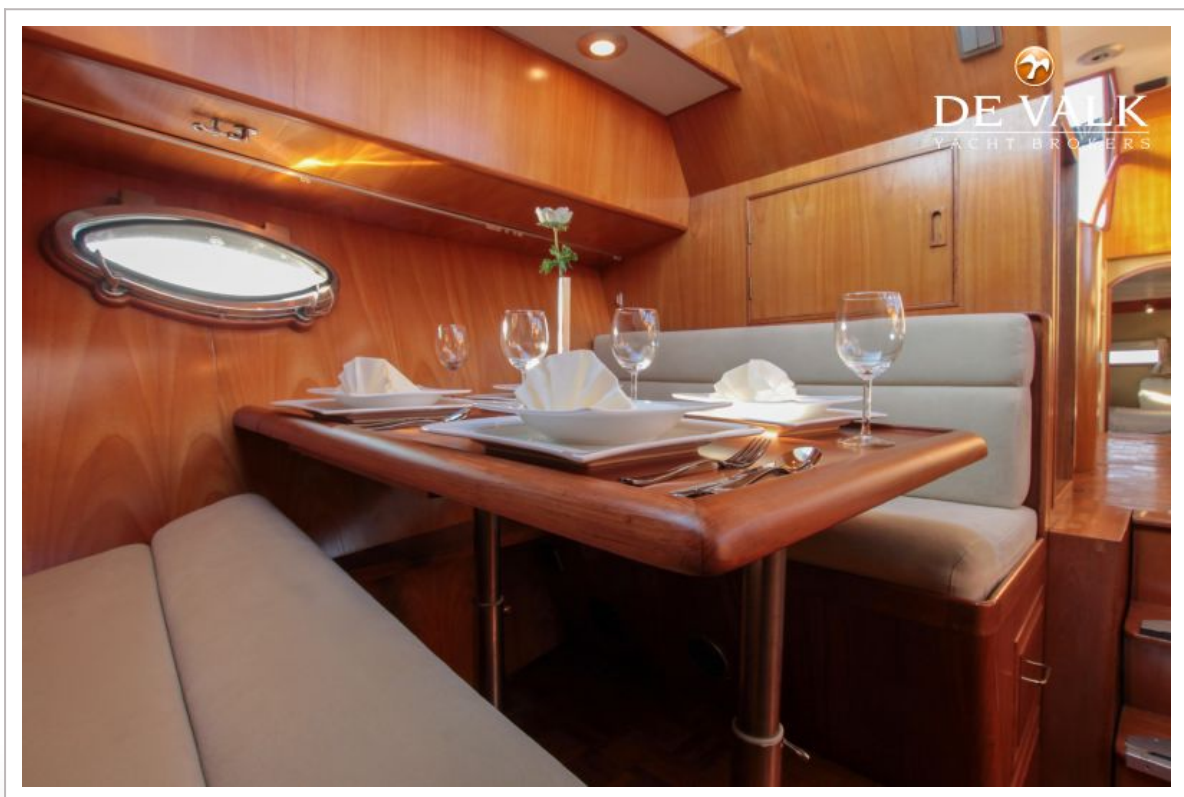




# OCEAN ALEXANDER 39



# OCEAN ALEXANDER 39





# OCEAN ALEXANDER 39

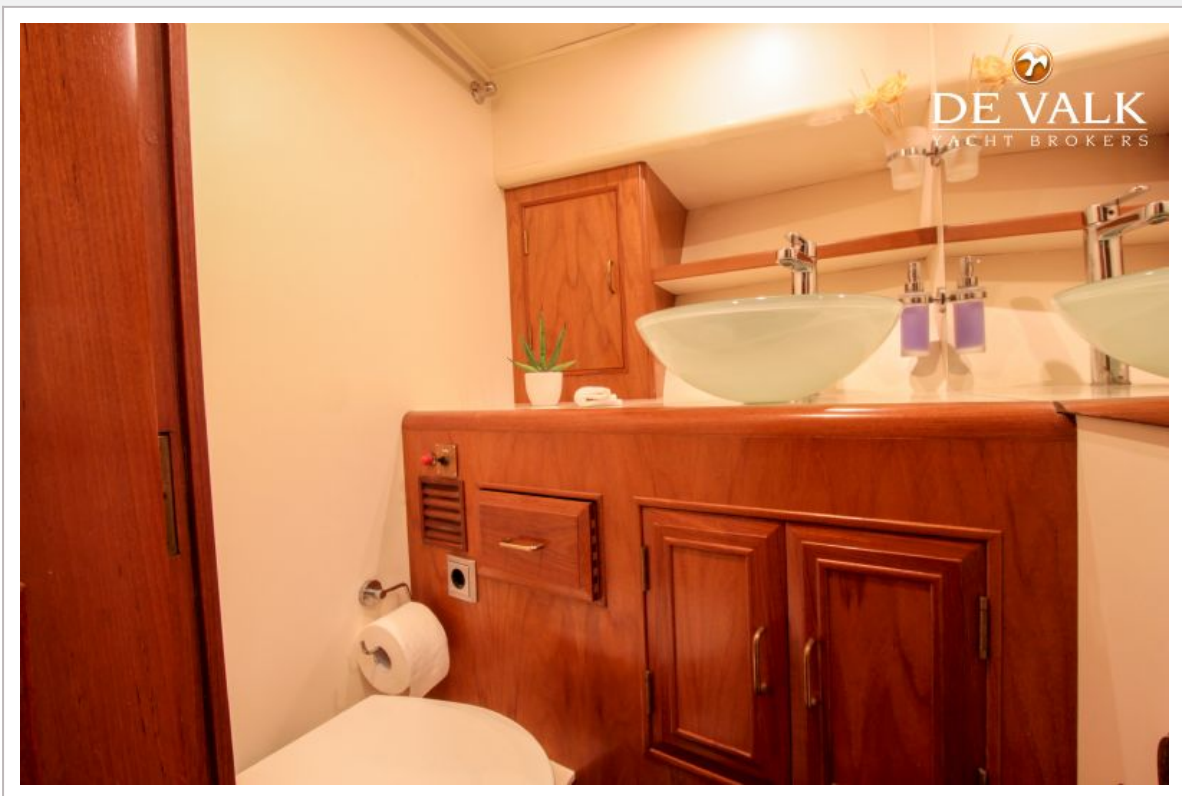


# OCEAN ALEXANDER 39

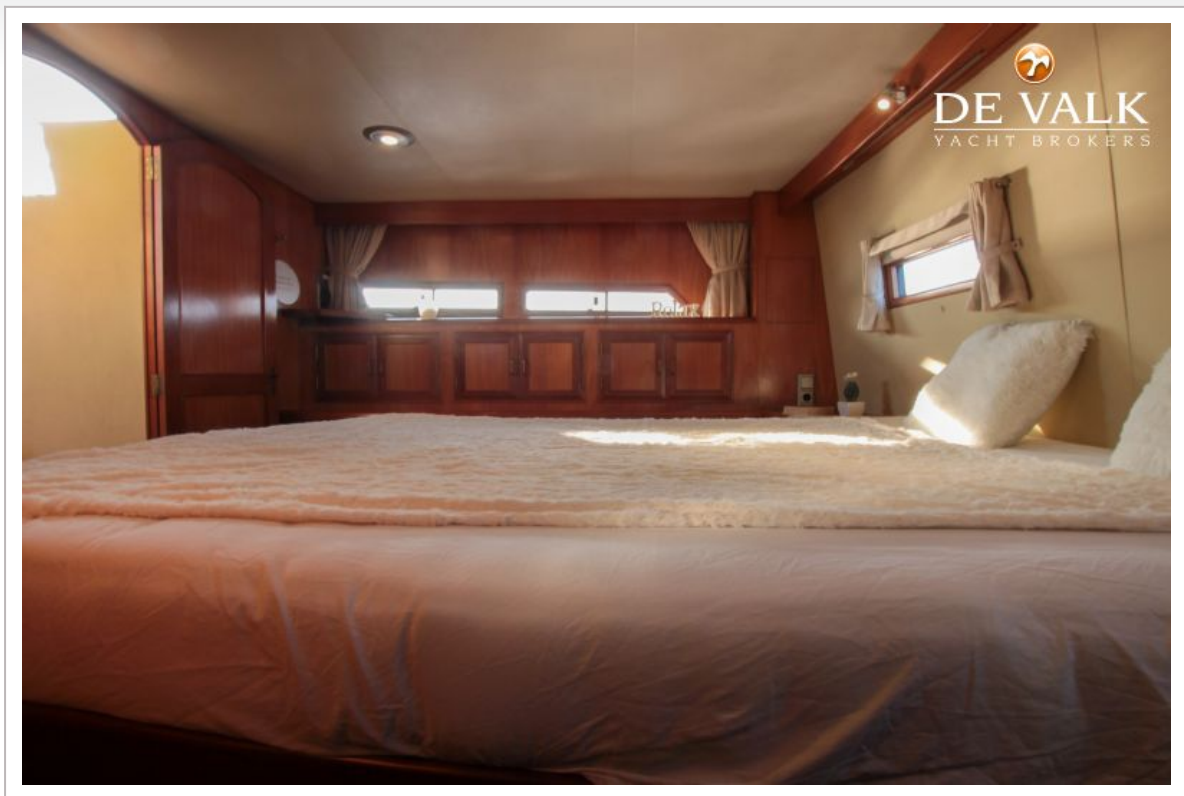




# OCEAN ALEXANDER 39



# OCEAN ALEXANDER 39





# OCEAN ALEXANDER 39

